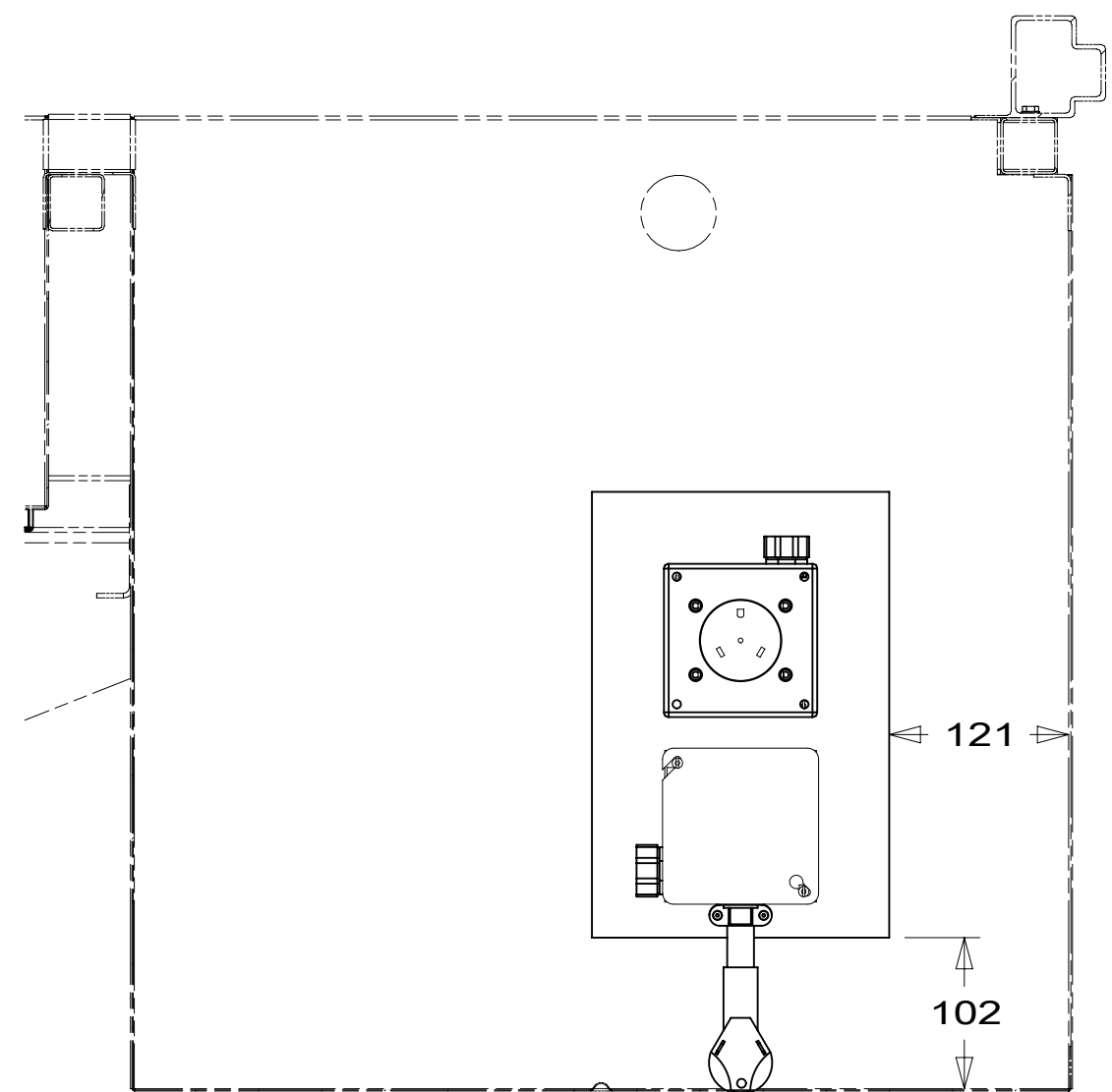
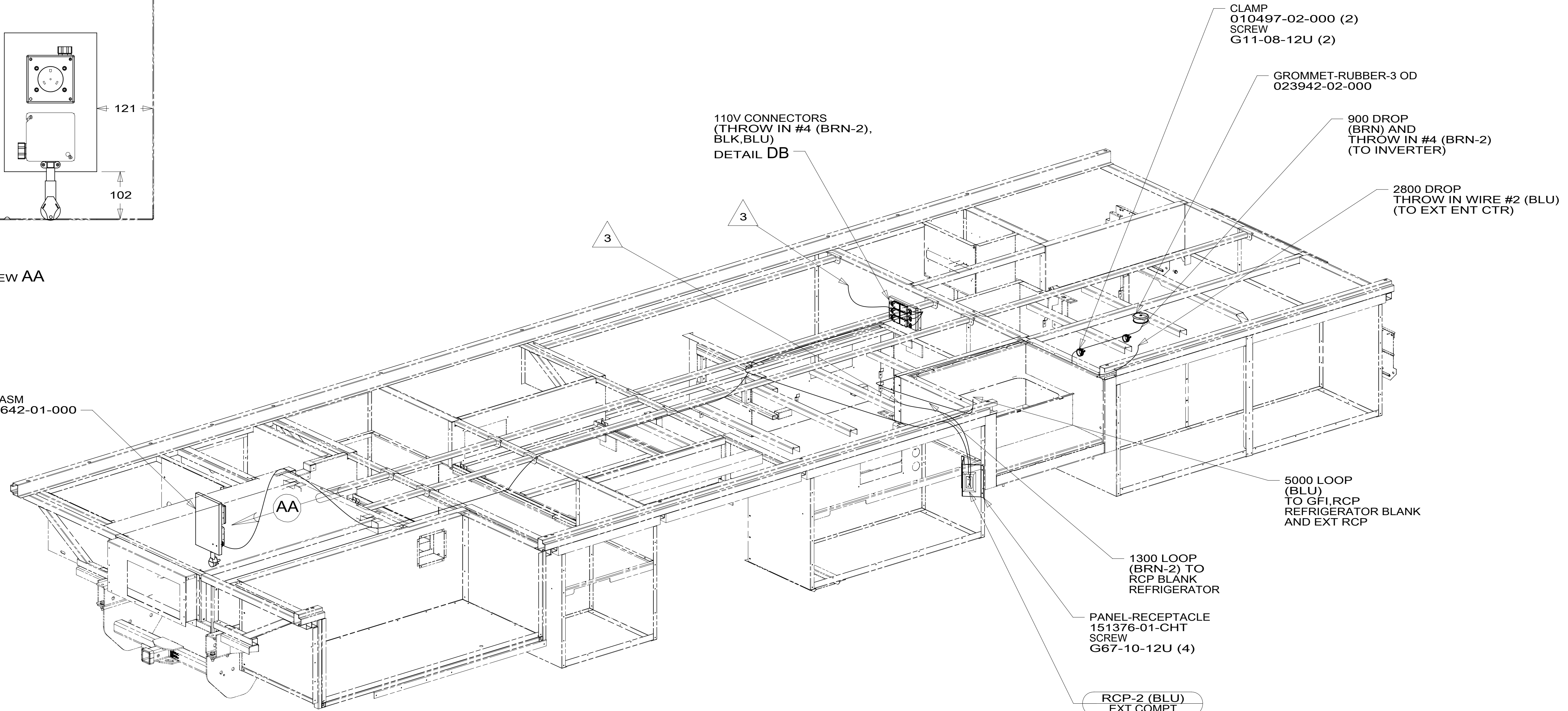


8 7 6 5 4 3 2 1



VIEW AA

POWER CORD BOX ASM
000159448 / 327642-01-000



- 3 WIRE ROUTED THROUGH FLOOR IN THIS AREA.
2. AT MINIMUM ALL WIRES TO BE SUPPORTED AND SECURED PER CODE REQUIREMENTS. USE CLAMP 10495 OR 10497 OR WIRE TIE 8343 OR 108046 AND SCREW G67-XX-XXX OR G56-XX-XXX AS APPROPRIATE FOR INSTALLATION.
1. WIRES ROUTED UNDER FLOOR.

NOTES:

FOR ELECTRICAL TORQUE SPECIFICATIONS SEE DWG NO. 128783-01-000

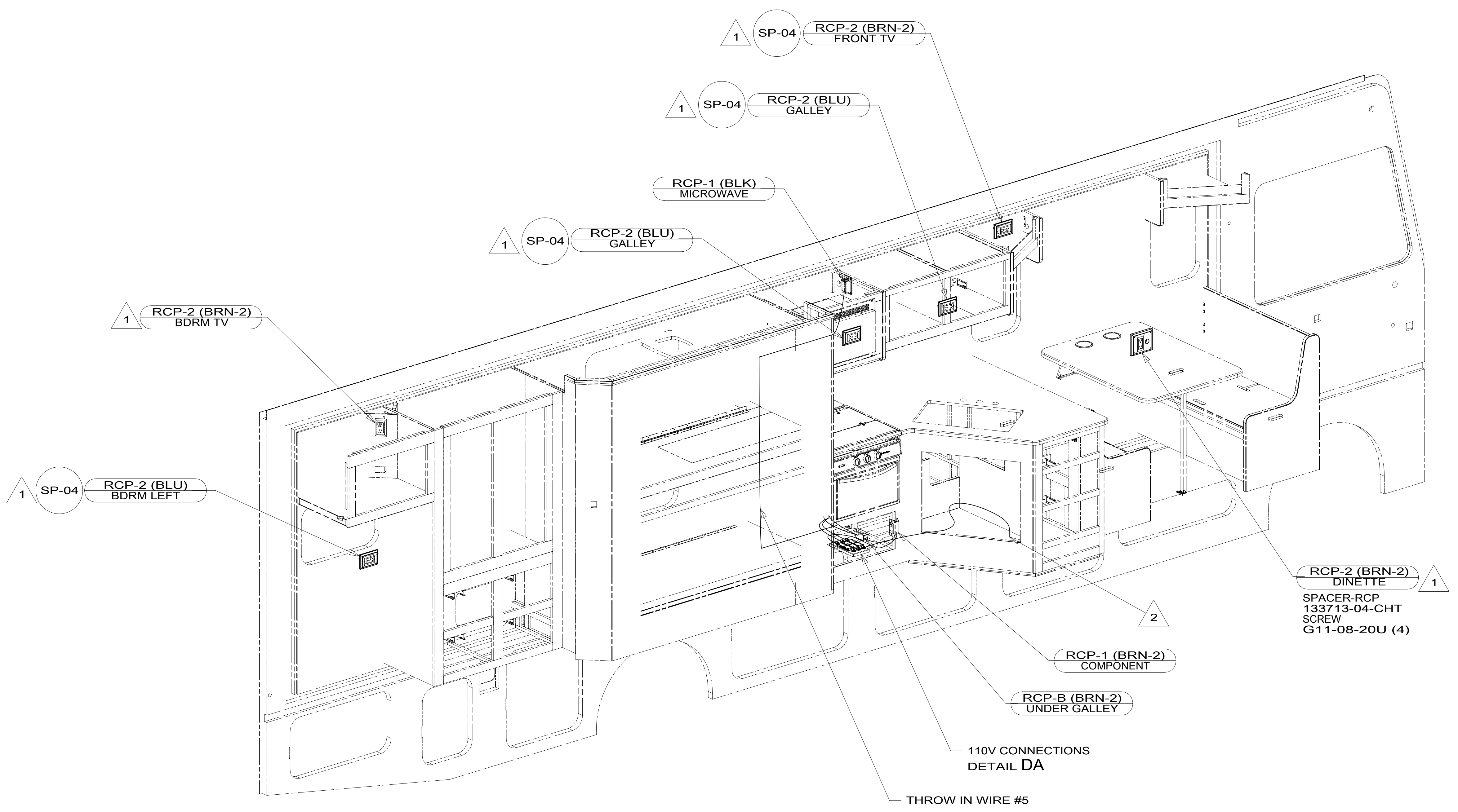
FOR ELECTRICAL CALLOUTS SEE DWG NO. 121339-01-000

- 265 CODES/STANDARDS-CSA/CMVSS
- 1B1 CODES/STANDARDS USA
- 1B1 265



DSNR:	ALL DIMENSIONS ARE IN MILLIMETERS	
DFFR:		
UNSPECIFIED TOLERANCES:	MATERIAL:	
WHOLE DIM (X) : 3		
ONE-PLACE (X.X) : 1.5		
TWO-PLACE (X.XX) : 0.50		
ANGLE : 1°		
REFER TO ES0018 FOR FASTENER TIGHTENING GUIDELINES	WEIGHT: (LBS)	FIRST USED:
		19 E31BE

DESCRIPTION: WIRING INSTL-BODY, 110V		
SHEET: 1 OF 7	ITEM/PART NO: 000163933 / 32895801000	REV:
REF:		1 20-Jun-2019



3. AT MINIMUM ALL WIRES TO BE SUPPORTED AND SECURED PER CODE REQUIREMENTS. USE CLAMP 10495 OR 10497 OR WIRE TIE 8343 OR 108046 AND SCREW G67-XX-XXX OR G56-XX-XXX AS APPROPRIATE FOR INSTALLATION.

- 2 WIRE ROUTED THRU FLOOR IN THIS AREA.
- 1 WIRE ROUTED IN SIDEWALL.

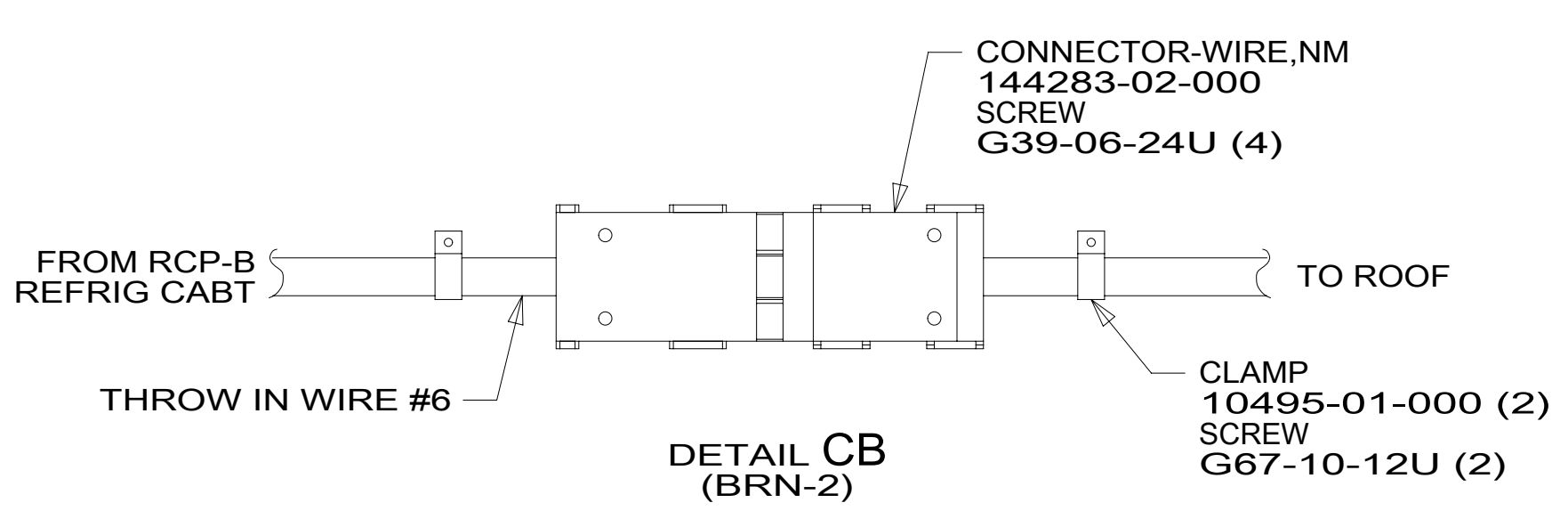
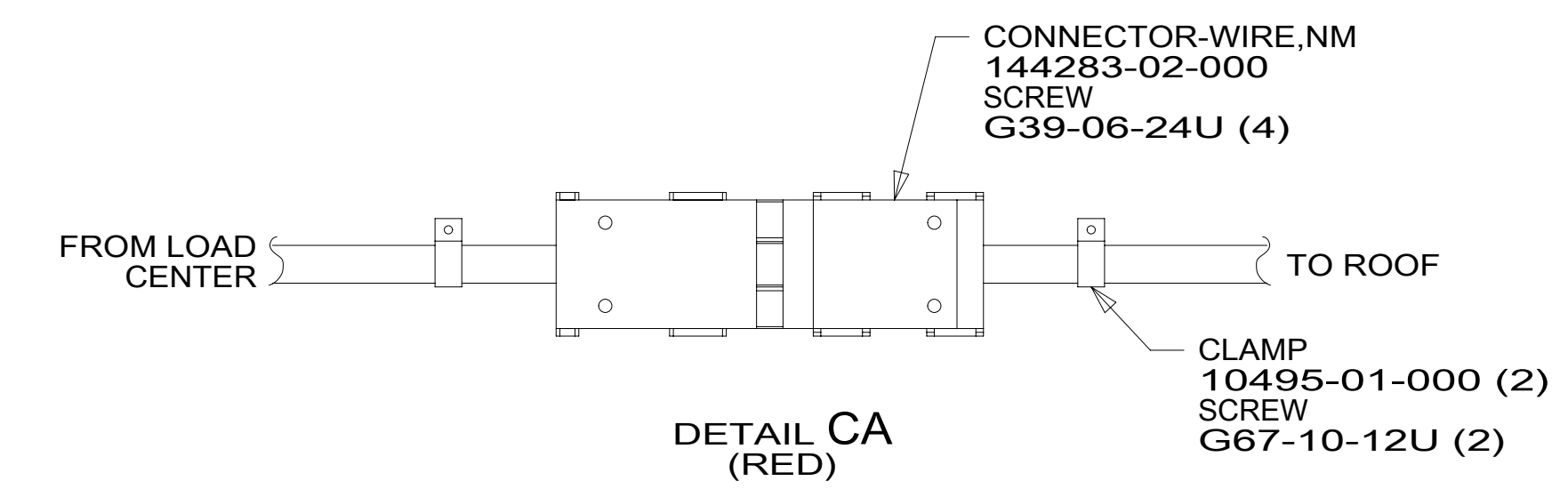
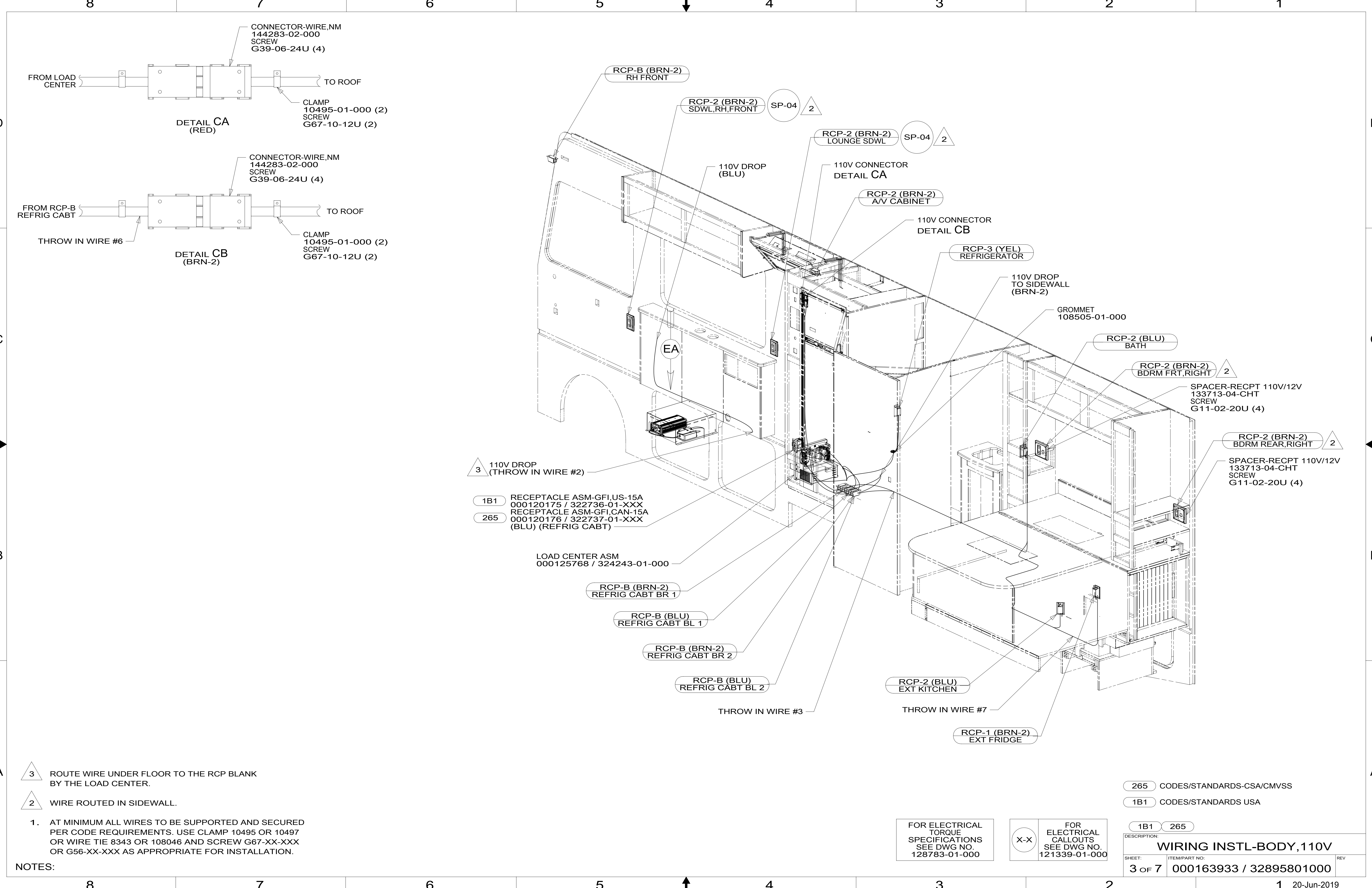
NOTES:

265 CODES/STANDARDS-CSA/CMVSS
1B1 CODES/STANDARDS USA

FOR ELECTRICAL TORQUE SPECIFICATIONS SEE DWG NO. 128783-01-000

FOR ELECTRICAL CALLOUTS SEE DWG NO. 121339-01-000

DESCRIPTION:	
WIRING INSTL-BODY, 110V	
SHEET:	ITEM/PART NO.:
2 OF 7	000163933 / 32895801000
REV	



3 110V DROP
(THROW IN WIRE #2)

- 1B1 RECEPTACLE ASM-GFI,US-15A
000120175 / 322736-01-XXX
- 265 RECEPTACLE ASM-GFI,CAN-15A
000120176 / 322737-01-XXX
(BLU) (REFRIG CABT)

LOAD CENTER ASM
000125768 / 324243-01-000

RCP-B (BRN-2)
REFRIG CABT BR 1

RCP-B (BLU)
REFRIG CABT BL 1

RCP-B (BRN-2)
REFRIG CABT BR 2

RCP-B (BLU)
REFRIG CABT BL 2

THROW IN WIRE #3

RCP-2 (BLU)
EXT KITCHEN

THROW IN WIRE #7

RCP-1 (BRN-2)
EXT FRIDGE

3 ROUTE WIRE UNDER FLOOR TO THE RCP BLANK BY THE LOAD CENTER.

2 WIRE ROUTED IN SIDEWALL.

1. AT MINIMUM ALL WIRES TO BE SUPPORTED AND SECURED PER CODE REQUIREMENTS. USE CLAMP 10495 OR 10497 OR WIRE TIE 8343 OR 108046 AND SCREW G67-XX-XXX OR G56-XX-XXX AS APPROPRIATE FOR INSTALLATION.

NOTES:

265 CODES/STANDARDS-CSA/CMVSS

1B1 CODES/STANDARDS USA

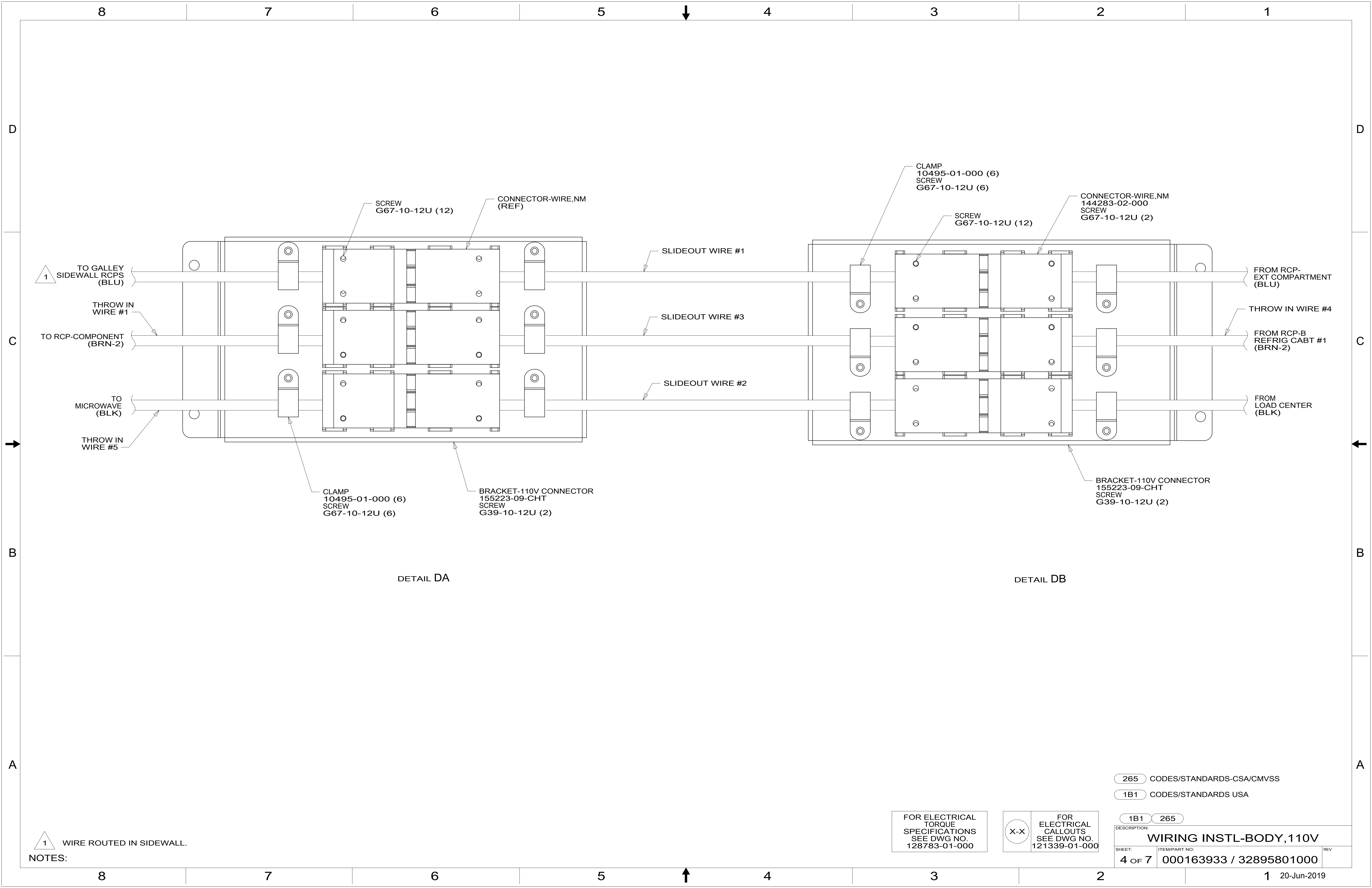
1B1 265

FOR ELECTRICAL TORQUE SPECIFICATIONS SEE DWG NO. 128783-01-000

FOR ELECTRICAL CALLOUTS SEE DWG NO. 121339-01-000

DESCRIPTION:
WIRING INSTL-BODY, 110V

SHEET: 3 OF 7 ITEM/PART NO.: 000163933 / 32895801000 REV



DETAIL DA

DETAIL DB

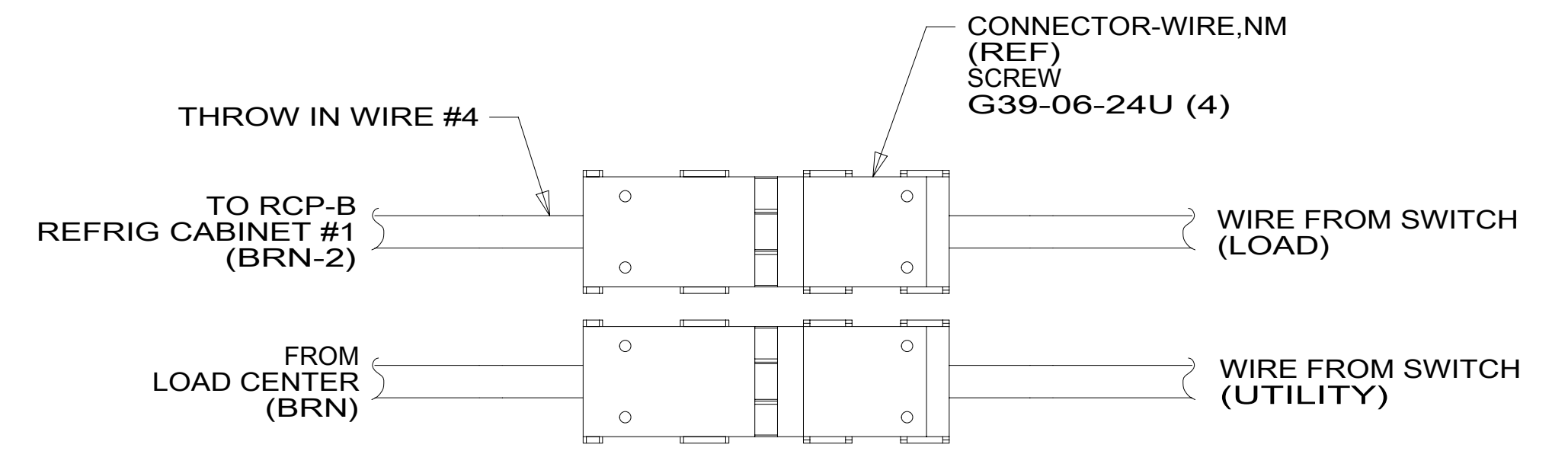
1 WIRE ROUTED IN SIDEWALL.
NOTES:

FOR ELECTRICAL TORQUE SPECIFICATIONS SEE DWG NO. 128783-01-000

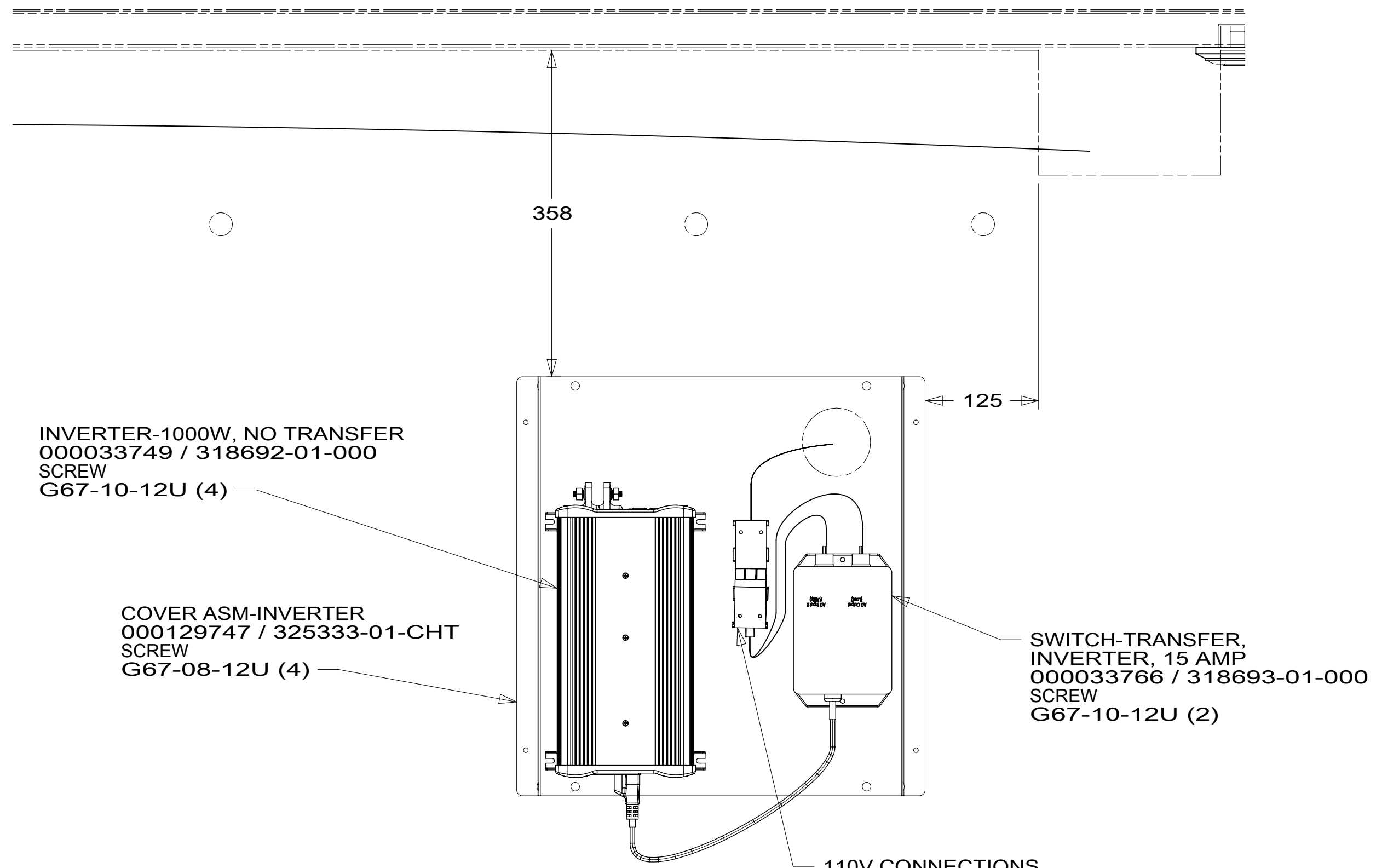
FOR ELECTRICAL CALLOUTS SEE DWG NO. 121339-01-000

- 265 CODES/STANDARDS-CSA/CMVSS
- 1B1 CODES/STANDARDS USA

DESCRIPTION:		1B1 265	
WIRING INSTL-BODY, 110V			
SHEET:	ITEM/PART NO.:	REV	
4 OF 7	000163933 / 32895801000		



DETAIL EB
(STACKED CONNECTORS SHOWN SEPERATE FOR CLARITY)



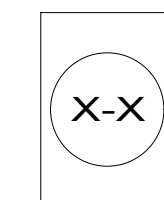
DETAIL EA

265 CODES/STANDARDS-CSA/CMVSS

1B1 CODES/STANDARDS USA

1B1 265

FOR ELECTRICAL TORQUE SPECIFICATIONS SEE DWG NO. 128783-01-000



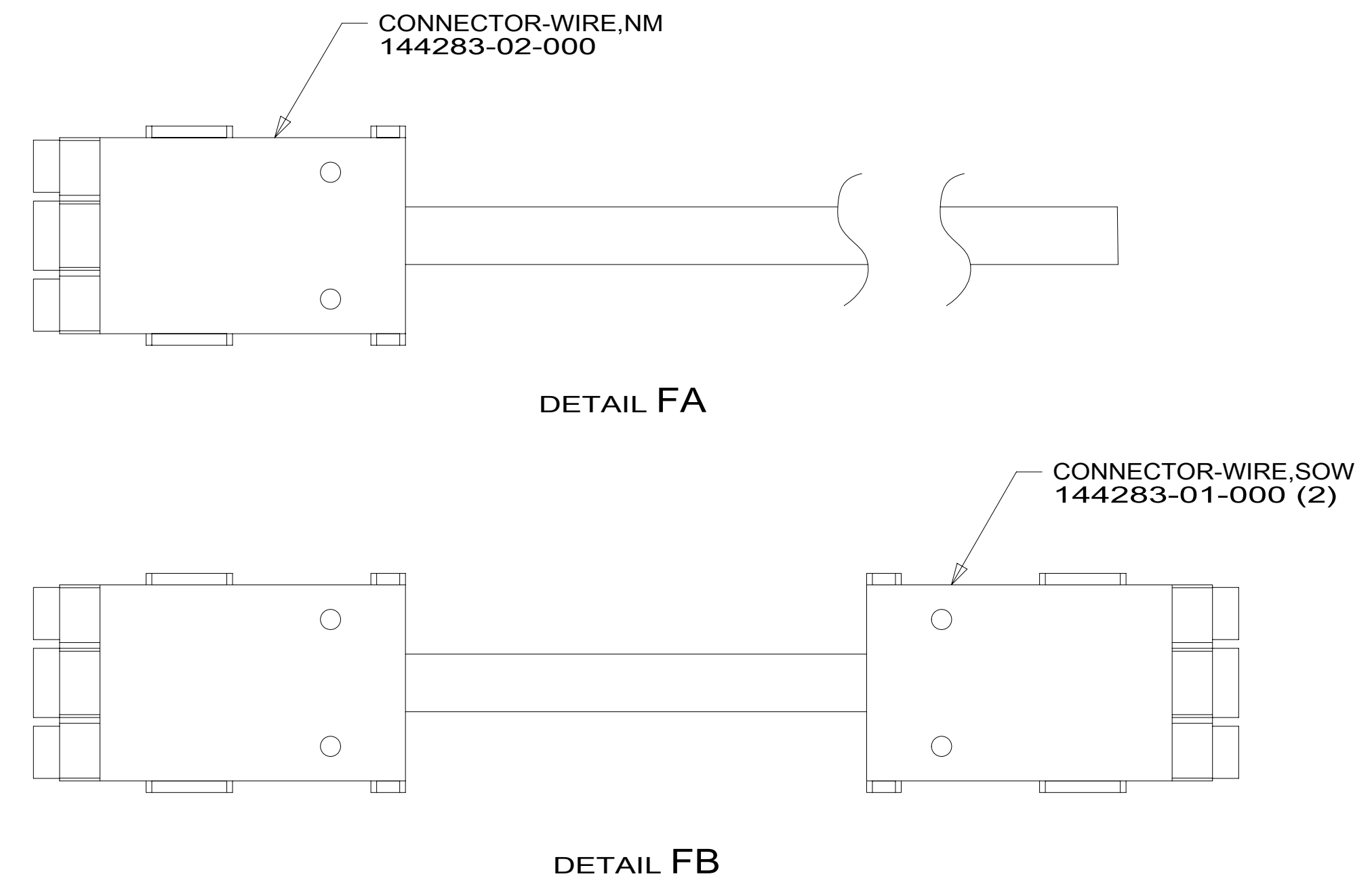
FOR ELECTRICAL CALLOUTS SEE DWG NO. 121339-01-000

DESCRIPTION:
WIRING INSTL-BODY, 110V

SHEET:	ITEM/PART NO.:	REV
5 OF 7	000163933 / 32895801000	

RED	1B1	136135-07-027	2
	265	136136-07-027	2
YEL	1B1	136131-05-020	
	265	136134-05-020	
BRN	1B1	136131-03-049	2
	265	136134-03-049	2
BLU	1B1	136131-02-070	2
	265	136134-02-070	2
MAIN	1B1	136137-01-075	4
	265	136138-01-075	4
BLK	1B1	136131-06-042	2
	265	136134-06-042	2
SLIDEOUT WIRE #1		136151-02-025	3
SLIDEOUT WIRE #2		136151-19-025	3
SLIDEOUT WIRE #3		136151-03-025	3
GROUND MAIN		178545-01-025	

THROW IN WIRE #1	1B1	136131-19-016	2
	265	136134-19-016	2
THROW IN WIRE #2	1B1	136131-02-062	
	265	136134-02-062	
THROW IN WIRE #3	1B1	136131-02-070	
	265	136134-02-070	
THROW IN WIRE #4	1B1	136131-19-084	2
	265	136134-19-084	2
THROW IN WIRE #5	1B1	136131-06-038	2
	265	136134-06-038	2
THROW IN WIRE #6	1B1	136131-19-027	2
	265	136134-19-027	2
THROW IN WIRE #7	1B1	136131-19-056	
	265	136134-19-056	



4 COVER ONE END OF MAIN CABLE ASM WITH 1000 MM OF CONDUIT 091234-02-000. SECURE WITH TAPE 8363-01-000.

3 SEE DETAIL FB FOR CONNECTOR INSTALLATION.

2 SEE DETAIL FA FOR CONNECTOR INSTALLATION.

1. ALL GROUNDS WIRES TO BE COVERED WITH TUBING 8041-02-000.

NOTES:

265 CODES/STANDARDS-CSA/CMVSS

1B1 CODES/STANDARDS USA

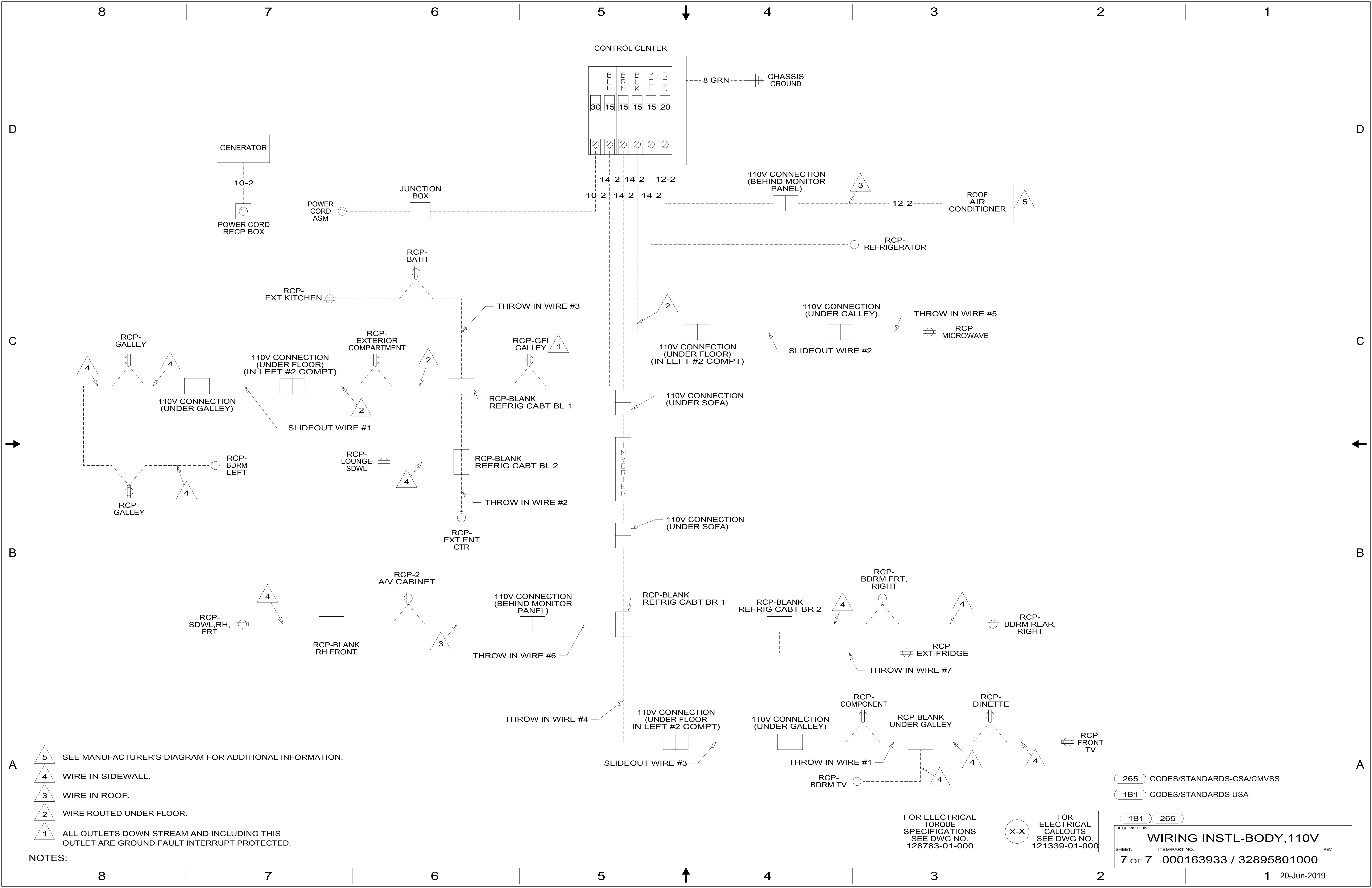
FOR ELECTRICAL TORQUE SPECIFICATIONS SEE DWG NO. 128783-01-000

FOR ELECTRICAL CALLOUTS SEE DWG NO. 121339-01-000

1B1 265

DESCRIPTION: **WIRING INSTL-BODY, 110V**

SHEET: 6 OF 7 ITEM/PART NO: 000163933 / 32895801000 REV



- NOTES:
- 5 SEE MANUFACTURER'S DIAGRAM FOR ADDITIONAL INFORMATION.
 - 4 WIRE IN SIDEWALL.
 - 3 WIRE IN ROOF.
 - 2 WIRE ROUTED UNDER FLOOR.
 - 1 ALL OUTLETS DOWN STREAM AND INCLUDING THIS OUTLET ARE GROUND FAULT INTERRUPT PROTECTED.

FOR ELECTRICAL TORQUE SPECIFICATIONS SEE DWG NO. 128783-01-000

FOR ELECTRICAL CALLOUTS SEE DWG NO. 121339-01-000

265	CODES/STANDARDS-CSA/CMVSS
1B1	CODES/STANDARDS USA

1B1	265
DESCRIPTION: WIRING INSTL-BODY, 110V	
SHEET: 7 OF 7	ITEM/PART NO: 000163933 / 32895801000
REV 1 20-Jun-2019	