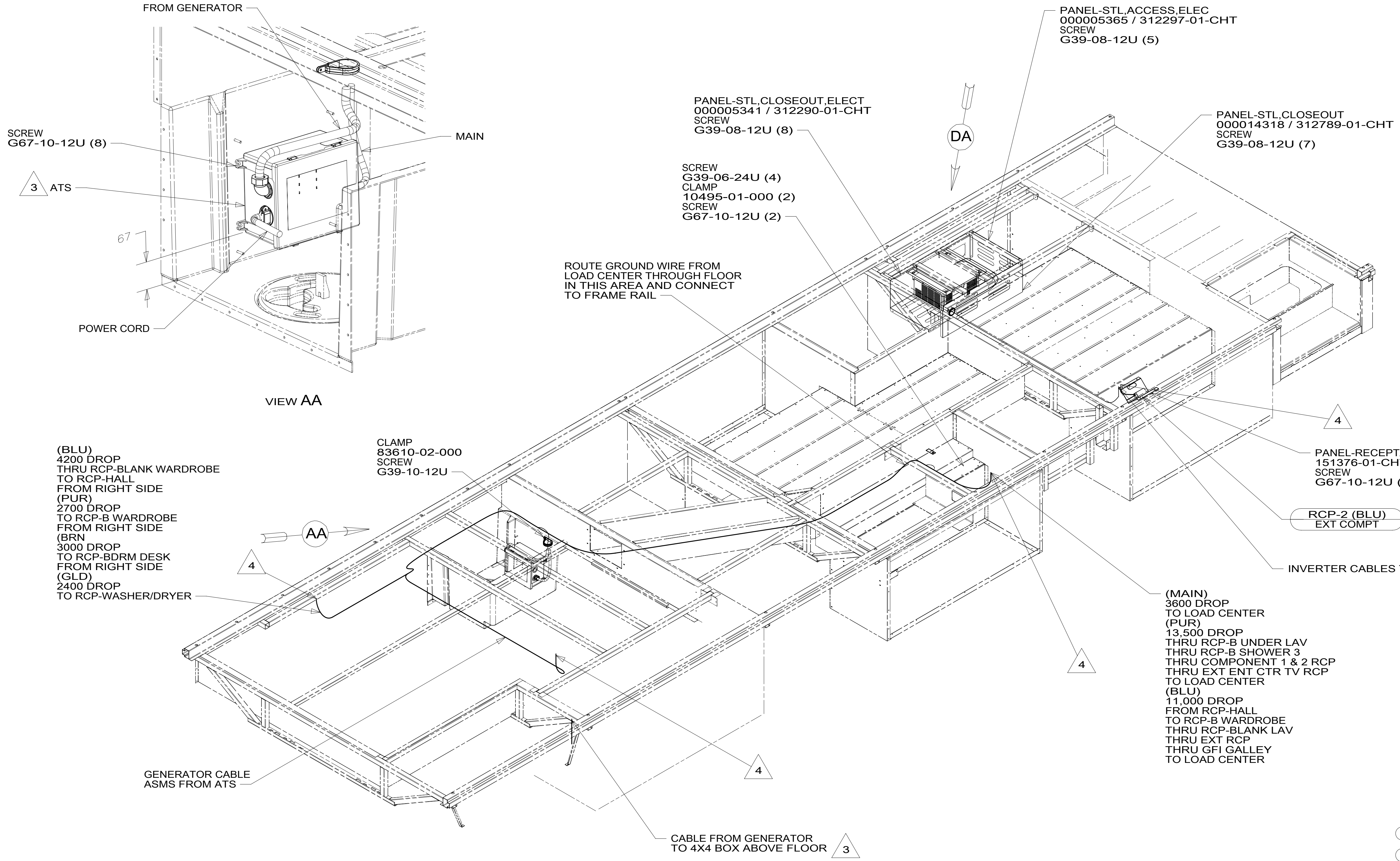


8 7 6 5 4 3 2 1



- 4 WIRE ROUTED THROUGH FLOOR IN THIS AREA.
- 3 SEE LOAD CENTER/ATS ASM FOR ADDITIONAL INFORMATION.
2. WIRES ROUTED UNDER FLOOR.
1. AT MINIMUM ALL WIRES TO BE SUPPORTED AND SECURED PER CODE REQUIREMENTS. USE CLAMP 10495 OR 10497 OR WIRE TIE 8343 OR 108046 AND SCREW G67-XX-XXX OR G56-XX-XXX AS APPROPRIATE FOR INSTALLATION.

NOTES:

FOR ELECTRICAL TORQUE SPECIFICATIONS SEE DWG NO. 128783-01-000

X-X FOR ELECTRICAL CALLOUTS SEE DWG NO. 121339-01-000

265 CODES/STANDARDS-CSA/CMVSS

1B1 CODES/STANDARDS USA

1B1 265

WINNEBAGO
COPYRIGHT 2016 WINNEBAGO INDUSTRIES, INC.

DSNR:	ALL DIMENSIONS ARE IN MILLIMETERS
DFFR:	MATERIAL:
UNSPECIFIED TOLERANCES:	WEIGHT: (LBS)
WHOLE DIM (X) : 3	FIRST USED:
ONE-PLACE (X.X) : 1.5	19 F35F
TWO-PLACE (X.XX) : 0.50	
ANGLE : 1°	

REFER TO ES0018 FOR FASTENER TIGHTENING GUIDELINES

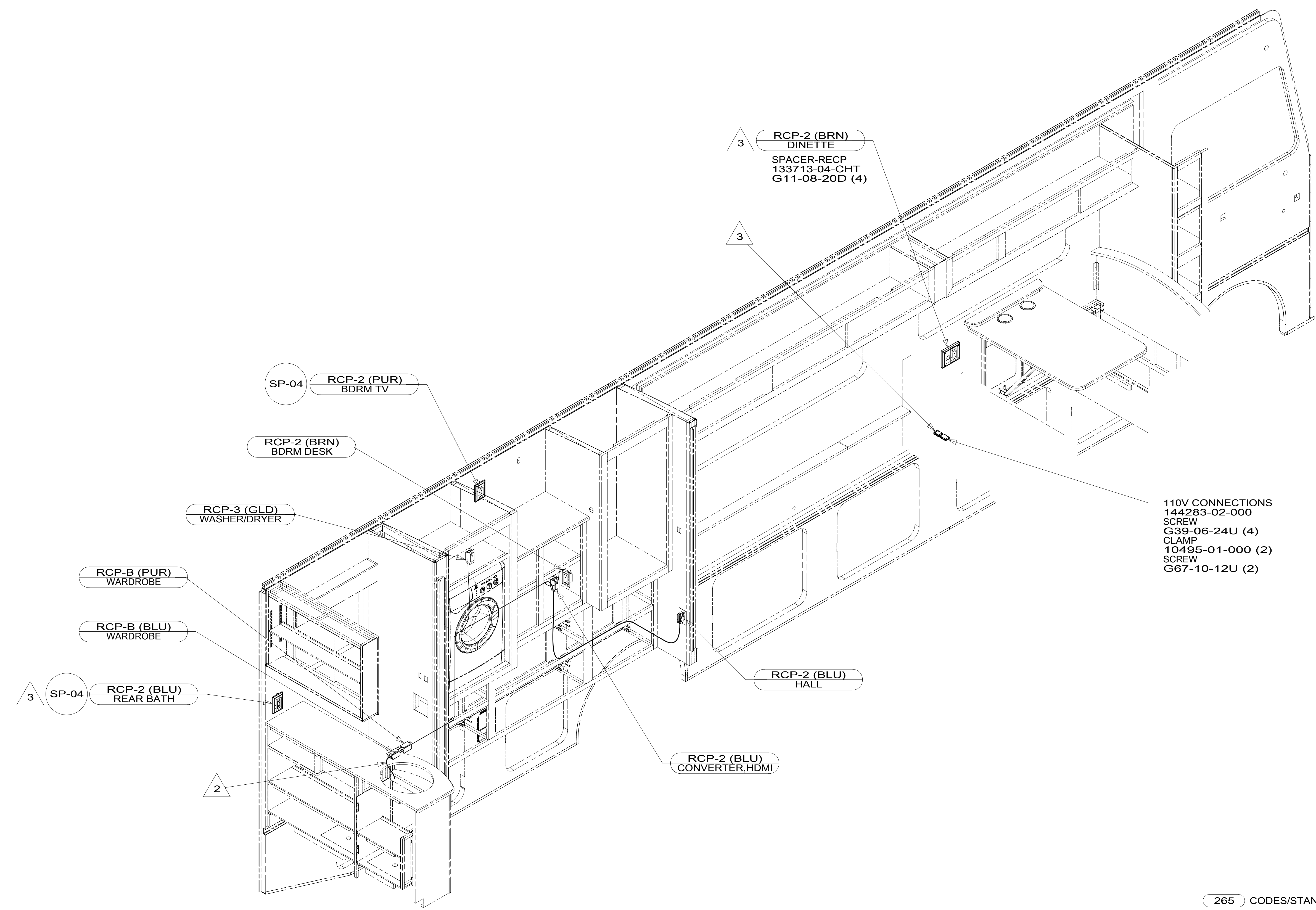
DESCRIPTION: **WIRING INSTL-BODY, 110V**

SHEET: 1 OF 5 ITEM/PART NO: 000163554 / 32893801000 REF: 1

8 7 6 5 4 3 2 1

8 7 6 5 4 3 2 1

D
C
B
A



- 3 WIRE ROUTED IN SIDEWALL.
- 2 WIRE ROUTES THRU FLOOR IN THIS AREA.

1. AT MINIMUM ALL WIRES TO BE SUPPORTED AND SECURED PER CODE REQUIREMENTS. USE CLAMP 10495 OR 10497 OR WIRE TIE 8343 OR 108046 AND SCREW G67-XX-XXX OR G56-XX-XXX AS APPROPRIATE FOR INSTALLATION.

NOTES:

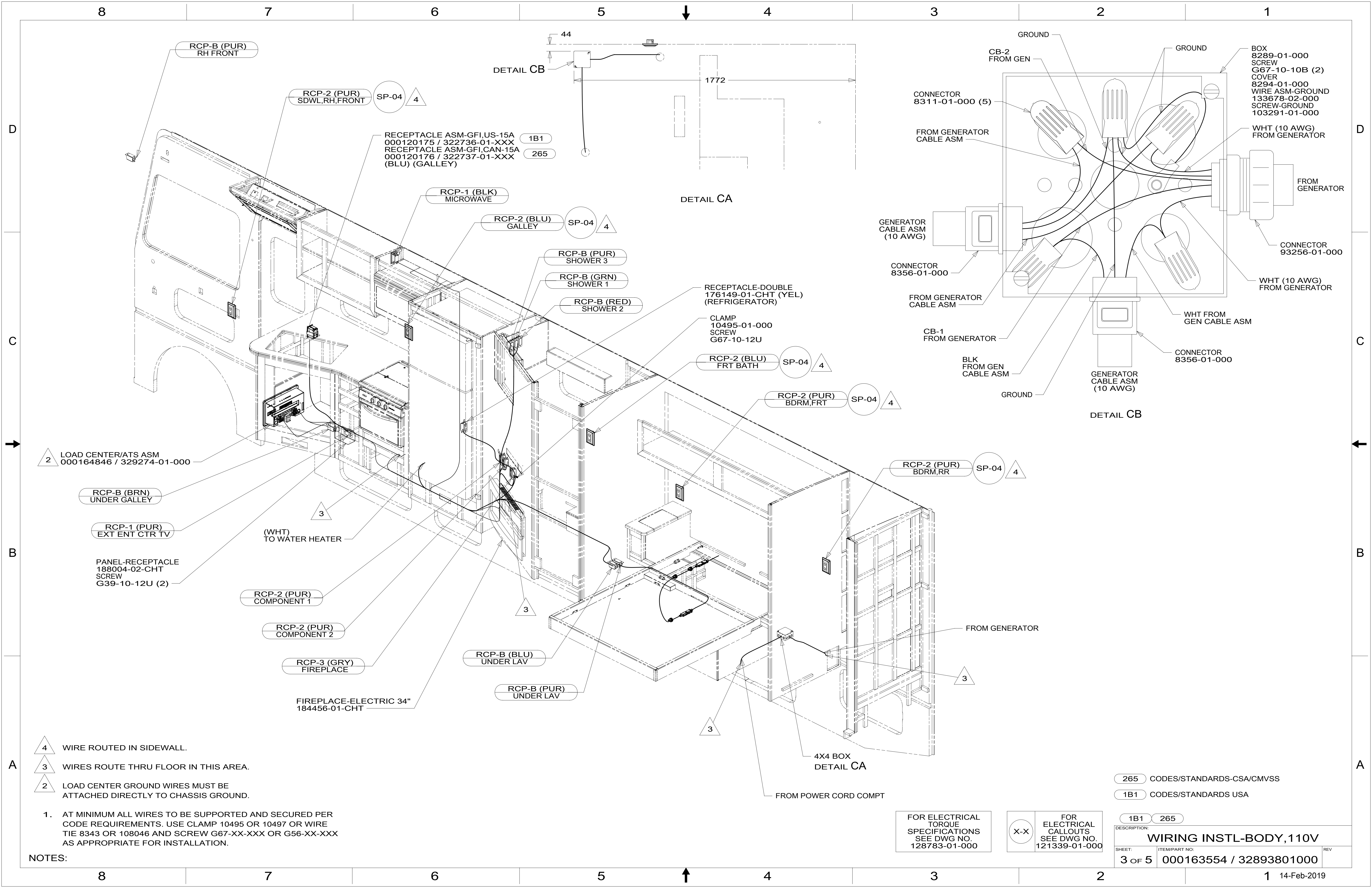
265 CODES/STANDARDS-CSA/CMVSS
 1B1 CODES/STANDARDS USA

FOR ELECTRICAL TORQUE SPECIFICATIONS SEE DWG NO. 128783-01-000

FOR ELECTRICAL CALLOUTS SEE DWG NO. 121339-01-000

DESCRIPTION:	
WIRING INSTL-BODY, 110V	
SHEET:	ITEM/PART NO. REV
2 OF 5	000163554 / 32893801000

8 7 6 5 4 3 2 1 14-Feb-2019



RCP-B (PUR)
RH FRONT

RCP-2 (PUR)
SDWL,RH,FRONT

SP-04 4

RECEPTACLE ASM-GFI,US-15A
000120175 / 322736-01-XXX
RECEPTACLE ASM-GFI,CAN-15A
000120176 / 322737-01-XXX
(BLU) (GALLEY)

1B1

265

RCP-1 (BLK)
MICROWAVE

RCP-2 (BLU)
GALLEY

SP-04 4

RCP-B (PUR)
SHOWER 3

RCP-B (GRN)
SHOWER 1

RCP-B (RED)
SHOWER 2

RECEPTACLE-DOUBLE
176149-01-CHT (YEL)
(REFRIGERATOR)

CLAMP
10495-01-000
SCREW
G67-10-12U

RCP-2 (BLU)
FRT BATH

SP-04 4

RCP-2 (PUR)
BDRM,FRT

SP-04 4

RCP-2 (PUR)
BDRM,RR

SP-04 4

LOAD CENTER/ATS ASM
000164846 / 329274-01-000

RCP-B (BRN)
UNDER GALLEY

RCP-1 (PUR)
EXT ENT CTR TV

PANEL-RECEPTACLE
188004-02-CHT
SCREW
G39-10-12U (2)

RCP-2 (PUR)
COMPONENT 1

RCP-2 (PUR)
COMPONENT 2

RCP-3 (GRY)
FIREPLACE

FIREPLACE-ELECTRIC 34"
184456-01-CHT

RCP-B (BLU)
UNDER LAV

RCP-B (PUR)
UNDER LAV

4X4 BOX
DETAIL CA

FROM POWER CORD COMPT

FROM GENERATOR

GROUND

CB-2
FROM GEN

CONNECTOR
8311-01-000 (5)

FROM GENERATOR
CABLE ASM

GENERATOR
CABLE ASM
(10 AWG)

CONNECTOR
8356-01-000

FROM GENERATOR
CABLE ASM

CB-1
FROM GENERATOR

BLK
FROM GEN
CABLE ASM

GROUND

DETAIL CB

GENERATOR
CABLE ASM
(10 AWG)

GROUND

BOX
8289-01-000
SCREW
G67-10-10B (2)
COVER
8294-01-000
WIRE ASM-GROUND
133678-02-000
SCREW-GROUND
103291-01-000

WHT (10 AWG)
FROM GENERATOR

FROM
GENERATOR

CONNECTOR
93256-01-000

WHT (10 AWG)
FROM GENERATOR

WHT FROM
GEN CABLE ASM

CONNECTOR
8356-01-000

- 4 WIRE ROUTED IN SIDEWALL.
- 3 WIRES ROUTE THRU FLOOR IN THIS AREA.
- 2 LOAD CENTER GROUND WIRES MUST BE ATTACHED DIRECTLY TO CHASSIS GROUND.

1. AT MINIMUM ALL WIRES TO BE SUPPORTED AND SECURED PER CODE REQUIREMENTS. USE CLAMP 10495 OR 10497 OR WIRE TIE 8343 OR 108046 AND SCREW G67-XX-XXX OR G56-XX-XXX AS APPROPRIATE FOR INSTALLATION.

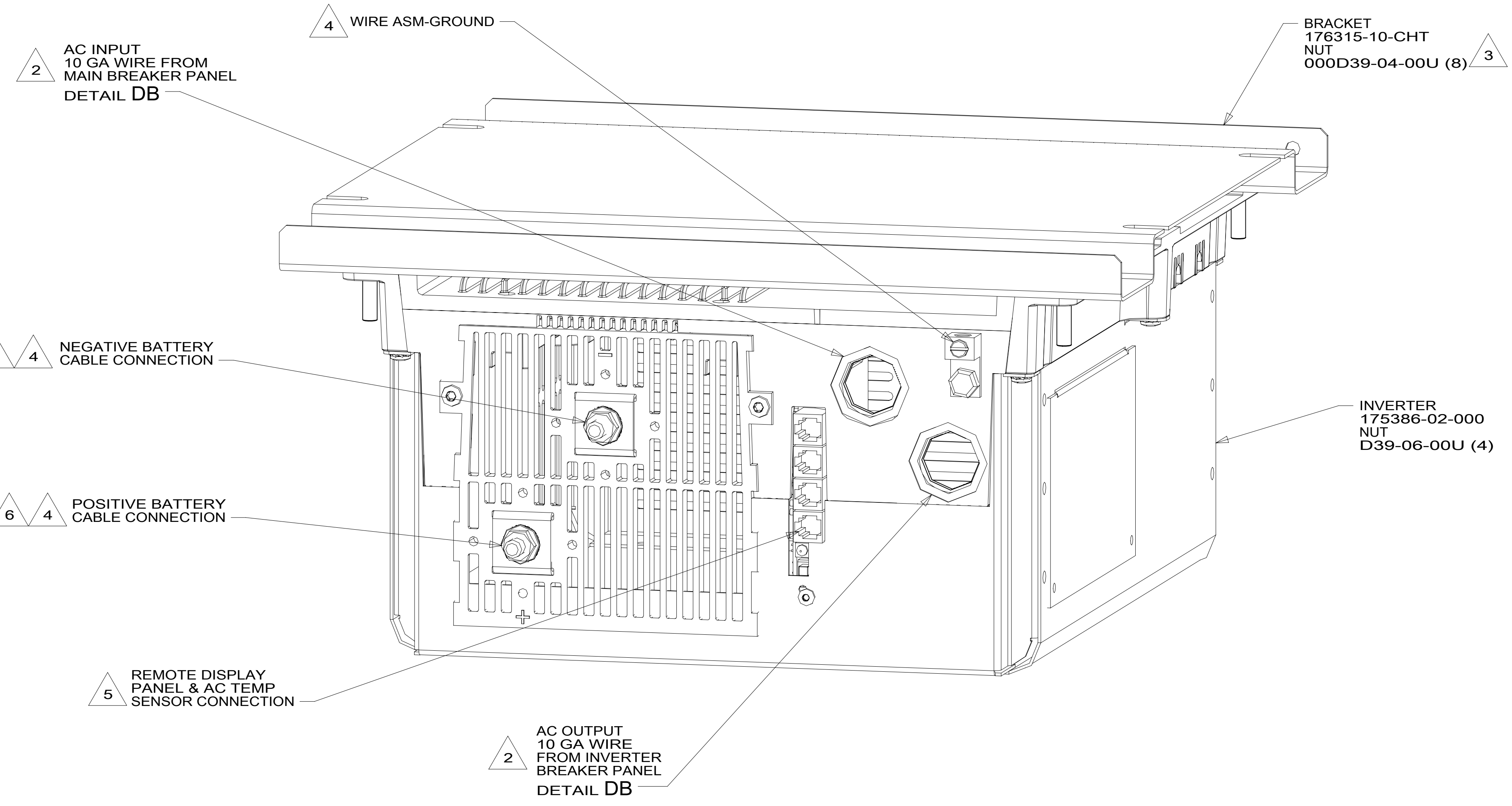
FOR ELECTRICAL
TORQUE
SPECIFICATIONS
SEE DWG NO.
128783-01-000

X-X
FOR ELECTRICAL
CALLOUTS
SEE DWG NO.
121339-01-000

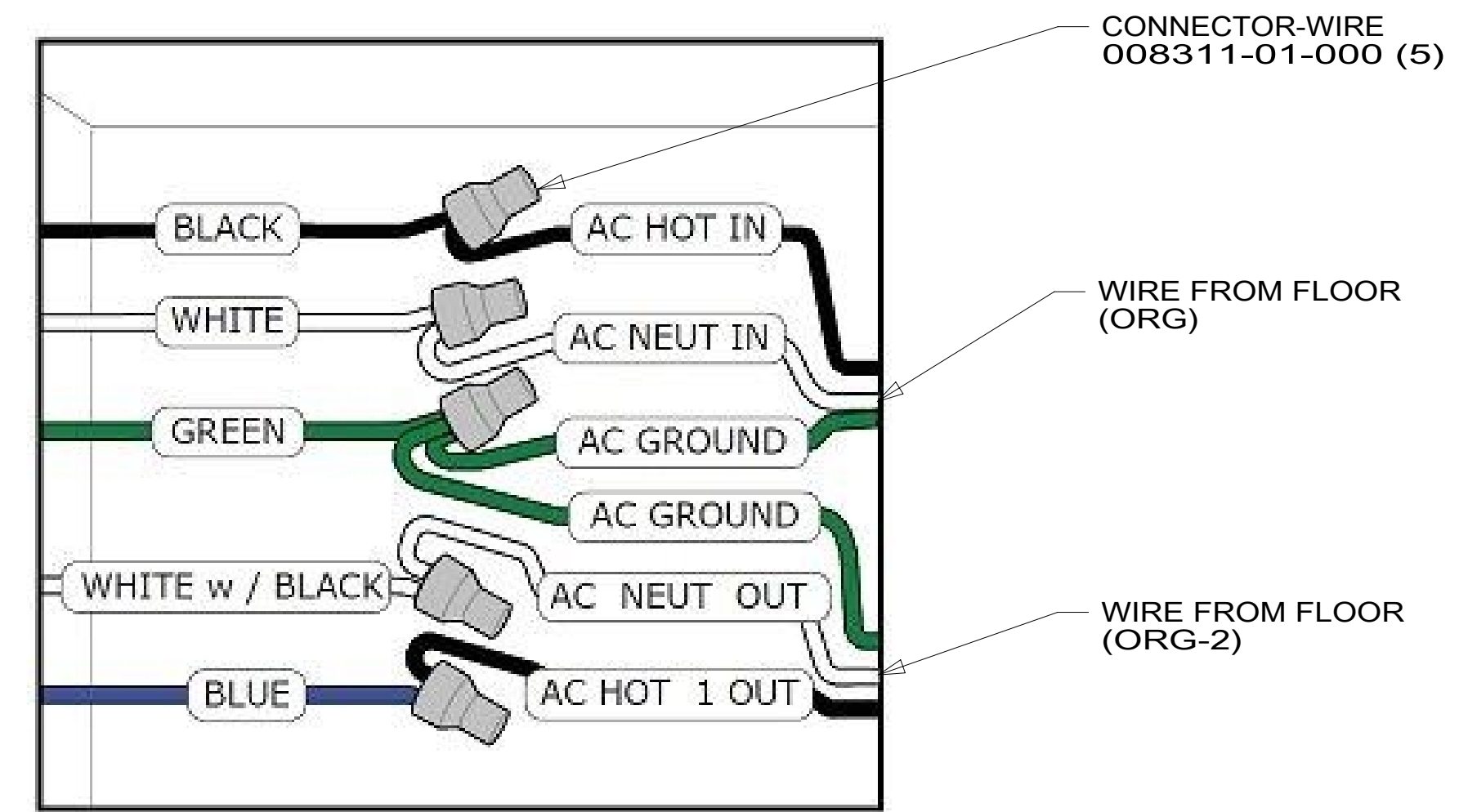
265 CODES/STANDARDS-CSA/CMVSS
1B1 CODES/STANDARDS USA

DESCRIPTION:	1B1 265	
WIRING INSTL-BODY, 110V		
SHEET:	ITEM/PART NO.:	REV
3 OF 5	000163554 / 32893801000	

8 7 6 5 4 3 2 1



DETAIL DA



DETAIL DB

- 6 DO NOT USE POWER/AIR TOOL IN INSTALL NUT. TORQUE TO 10-12 FT LBS.
- 5 CABLES PART OF WIR ASM-CHASSIS.
- 4 SEE BATTERY INSTL FOR ADDITIONAL INFORMATION.
- 3 BRACKET IS LOCATED BY HOLES ON BRACKET.
- 2 SEE LOAD CENTER/ATS ASM FOR ADDITIONAL INFORMATION.

NOTES:
1. SEE INVERTER/CHARGER OWNER'S MANUAL FOR ADDITIONAL INFORMATION.

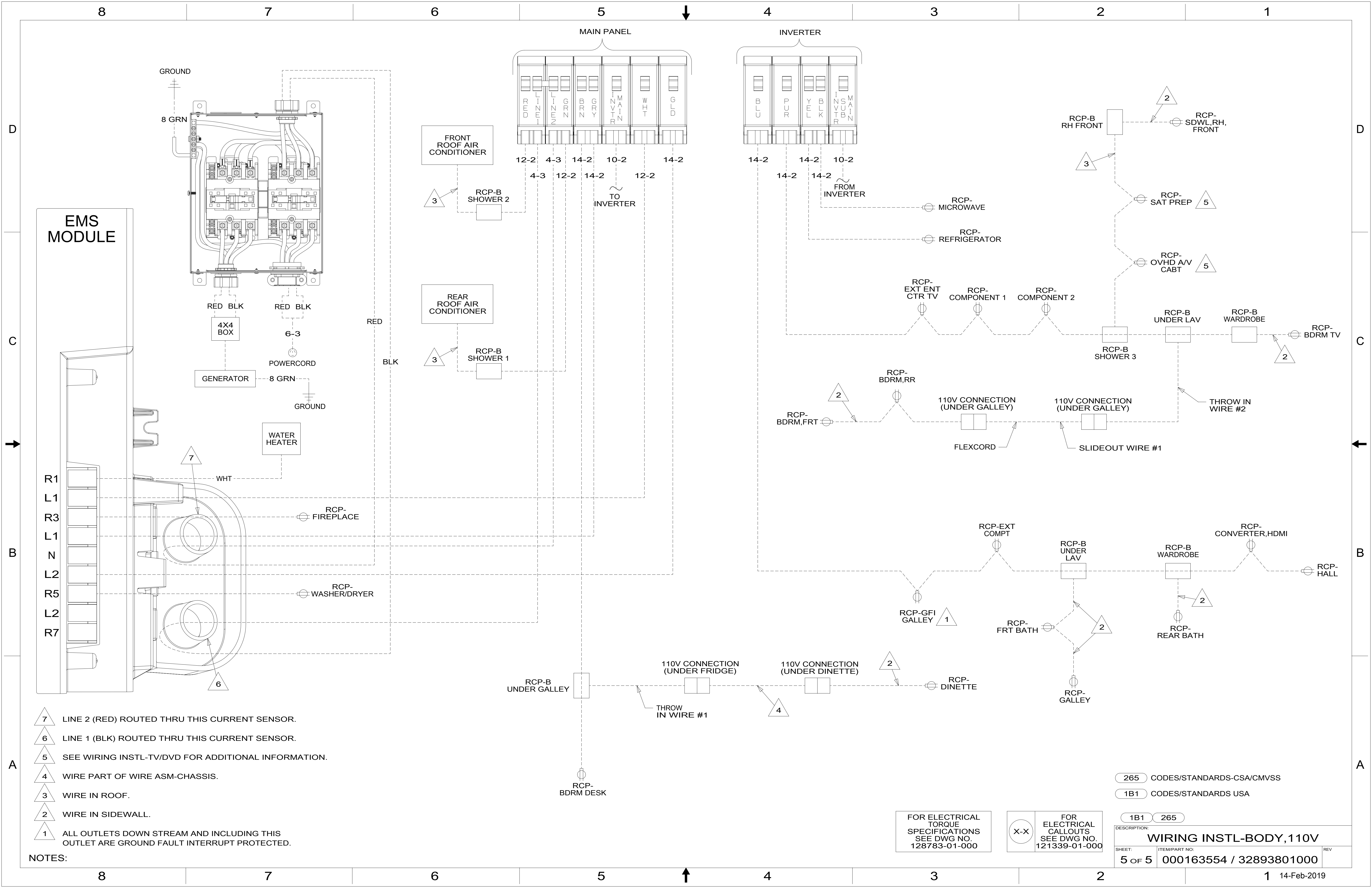
265 CODES/STANDARDS-CSA/CMVSS
1B1 CODES/STANDARDS USA

FOR ELECTRICAL
TORQUE
SPECIFICATIONS
SEE DWG NO.
128783-01-000

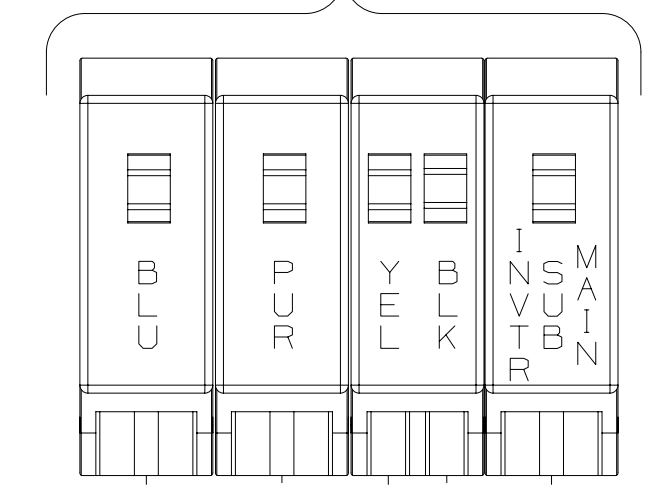
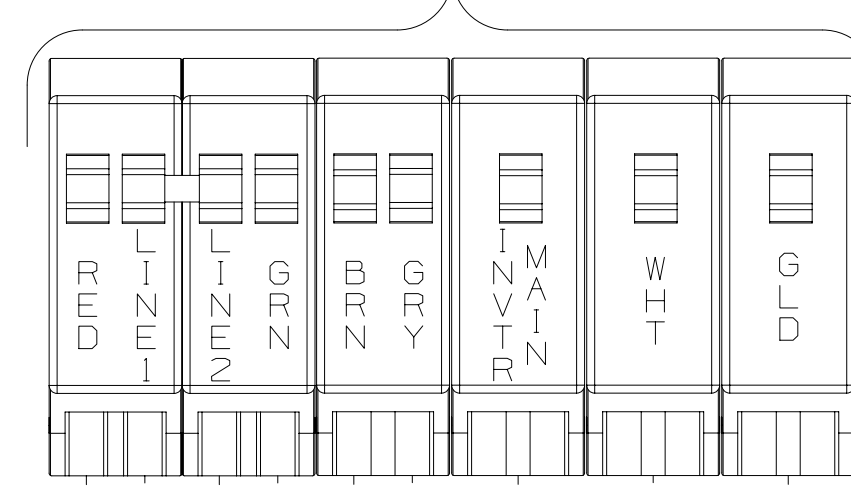
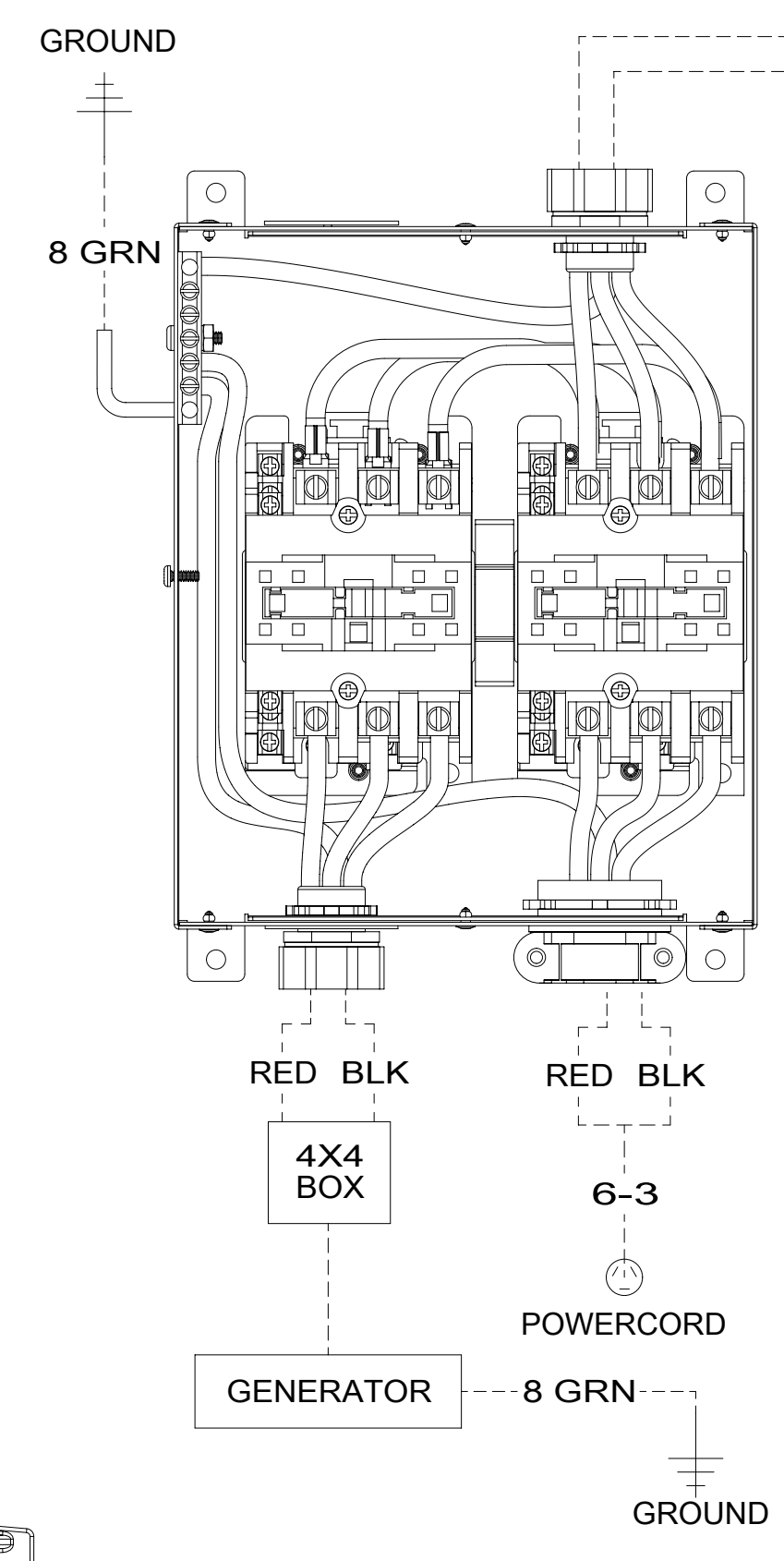
X-X
FOR
ELECTRICAL
CALLOUTS
SEE DWG NO.
121339-01-000

DESCRIPTION:	1B1 265	
WIRING INSTL-BODY, 110V		
SHEET:	ITEM/PART NO:	REV
4 OF 5	000163554 / 32893801000	

8 7 6 5 4 3 2 1 14-Feb-2019



EMS MODULE



- R1
- L1
- R3
- L1
- N
- L2
- R5
- L2
- R7

- NOTES:**
- 7 LINE 2 (RED) ROUTED THRU THIS CURRENT SENSOR.
 - 6 LINE 1 (BLK) ROUTED THRU THIS CURRENT SENSOR.
 - 5 SEE WIRING INSTL-TV/DVD FOR ADDITIONAL INFORMATION.
 - 4 WIRE PART OF WIRE ASM-CHASSIS.
 - 3 WIRE IN ROOF.
 - 2 WIRE IN SIDEWALL.
 - 1 ALL OUTLETS DOWN STREAM AND INCLUDING THIS OUTLET ARE GROUND FAULT INTERRUPT PROTECTED.

FOR ELECTRICAL TORQUE SPECIFICATIONS SEE DWG NO. 128783-01-000

FOR ELECTRICAL CALLOUTS SEE DWG NO. 121339-01-000

265 CODES/STANDARDS-CSA/CMVSS
1B1 CODES/STANDARDS USA

DESCRIPTION: WIRING INSTL-BODY, 110V	
SHEET: 5 OF 5	ITEM/PART NO: 000163554 / 32893801000
REV 14-Feb-2019	