

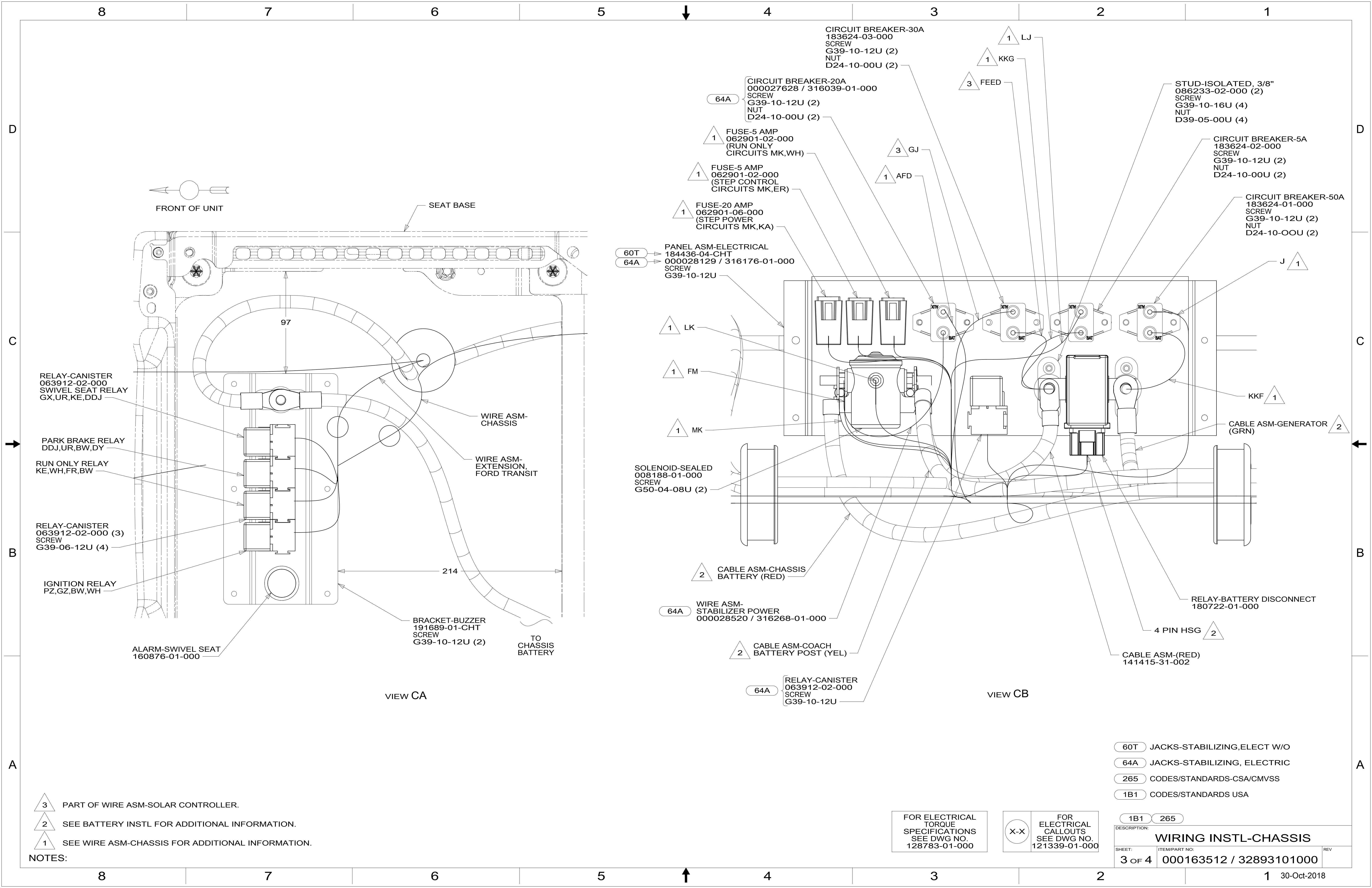
- NOTES:**
- 8 SECURE ALARM BACK TO WIRE LOOM WITH TIE-WIRE 008343-03-000.
 - 7 CONNECT KE TO RED MARKED TERMINAL; CONNECT AFM TO UNMARKED TERMINAL.
 - 6 DRILL 12.7 MM HOLE INTO DASH PANEL.
 - 5 DRILL 12.3 MM HOLE INTO DASH PANEL.
 - 4 SEE DETAIL **BB** FOR CONNECTION OF BUTTON SWITCH.
 - 3 SEE GENERATOR INSTL FOR ADDITIONAL INFORMATION.
 - 2 ROUTE WIRE ALONG RUNNING BOARD SUPPORT. ATTACH WITH WIRE TIE USING HOLES PROVIDED IN SUPPORT.
 - 1 SEE BATTERY INSTL FOR ADDITIONAL INFORMATION.

FOR ELECTRICAL TORQUE SPECIFICATIONS SEE DWG NO. 128783-01-000

FOR ELECTRICAL CALLOUTS SEE DWG NO. 121339-01-000

- 64A JACKS-STABILIZING, ELECTRIC
- 384 GEN 2.5KW ONAN-MICROLITE
- 265 CODES/STANDARDS-CSA/CMVSS
- 1B1 CODES/STANDARDS USA

DESCRIPTION:		WIRING INSTL-CHASSIS	
SHEET:	ITEM/PART NO.:	REV	
2 OF 4	000163512 / 32893101000		



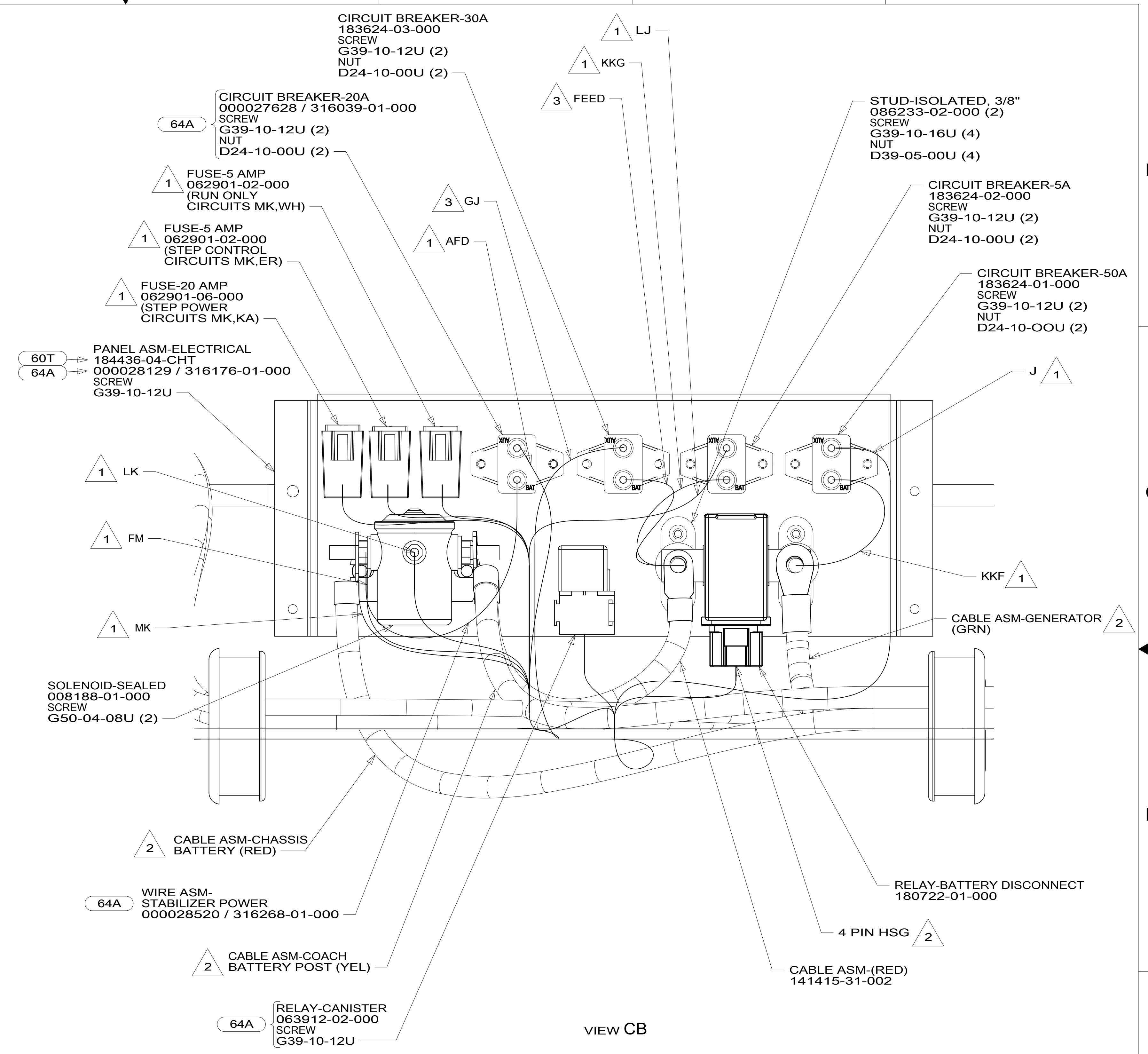
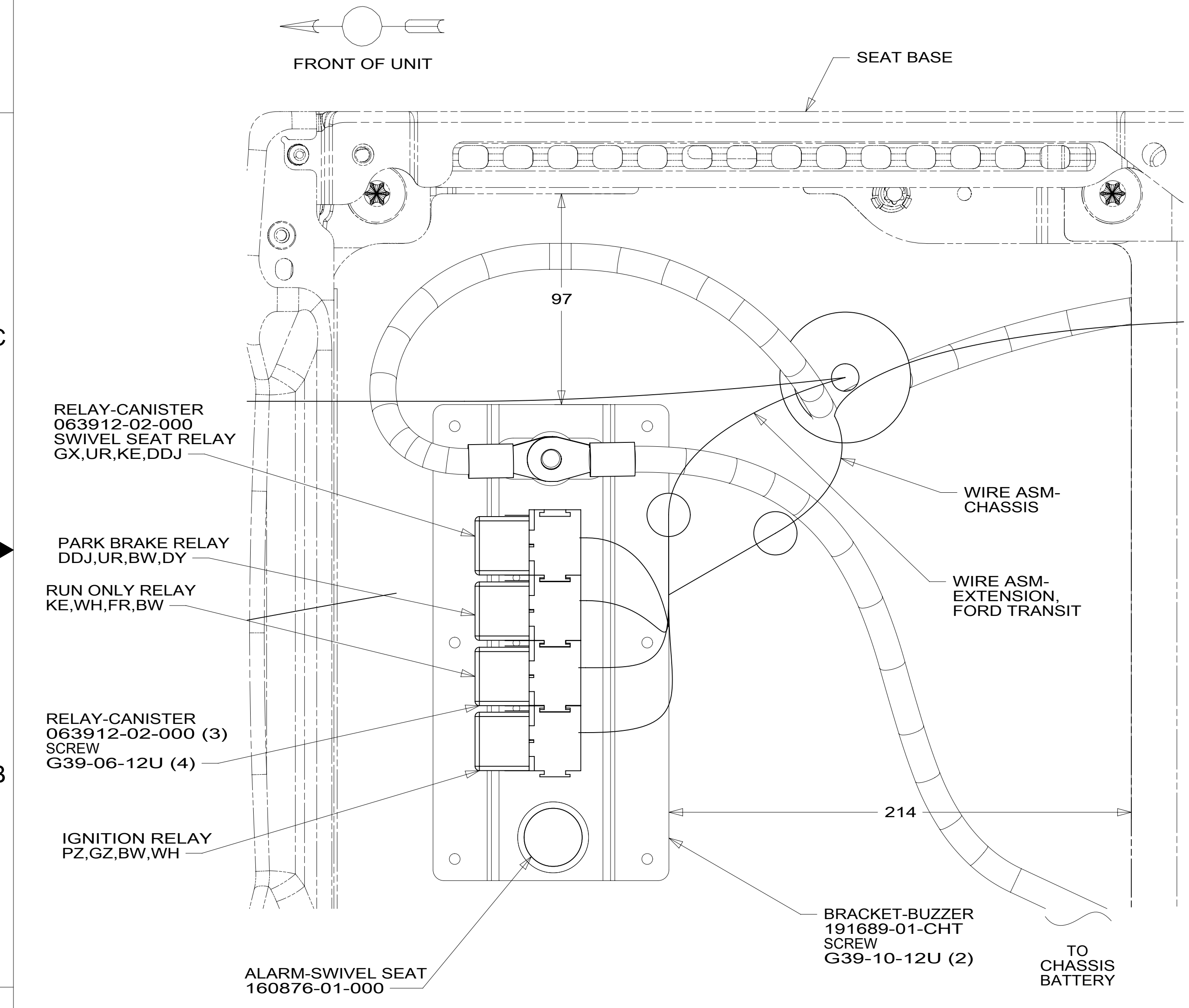
8 7 6 5 4 3 2 1

D

C

B

A



- NOTES:
- 3 PART OF WIRE ASM-SOLAR CONTROLLER.
 - 2 SEE BATTERY INSTL FOR ADDITIONAL INFORMATION.
 - 1 SEE WIRE ASM-CHASSIS FOR ADDITIONAL INFORMATION.

FOR ELECTRICAL TORQUE SPECIFICATIONS SEE DWG NO. 128783-01-000

FOR ELECTRICAL CALLOUTS SEE DWG NO. 121339-01-000

- 60T JACKS-STABILIZING,ELECT W/O
- 64A JACKS-STABILIZING, ELECTRIC
- 265 CODES/STANDARDS-CSA/CMVSS
- 1B1 CODES/STANDARDS USA

DESCRIPTION:		1B1 265	
WIRING INSTL-CHASSIS			
SHEET:	ITEM/PART NO.:	REV	
3 OF 4	000163512 / 32893101000		

8 7 6 5 4 3 2 1 30-Oct-2018

8 7 6 5 4 3 2 1

D
C
B
A

D
C
B
A

CONNECTS TO INVERTER

GROMMET
023942-01-000

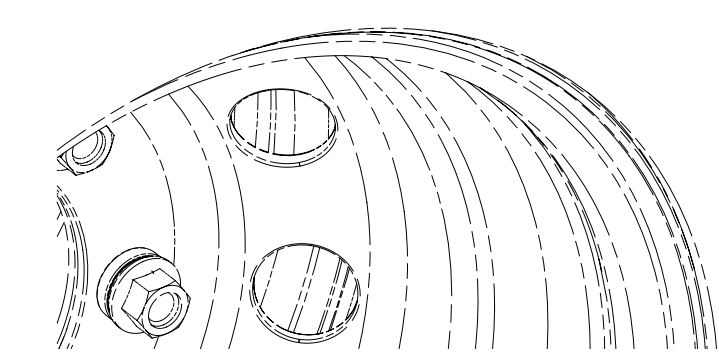
CLAMP
083610-01-000 (4)
SCREW
G39-08-12U (4)

INVERTER FUSE HOLDER AND
INVERTER FUSE TO BE MOUNTED
ON PROVIDED MOUNTING PLATE

CABLE ASM-COACH BATTERY GND
CABLE ASM-INVERTER GND
ROUTED ABOVE INVERTER FUSE

GROMMET
023942-02-000 (2)

INVERTER CABLES
PASS THRU STEP IN
STEP BOX ASM



265 CODES/STANDARDS-CSA/CMVSS
1B1 CODES/STANDARDS USA

FOR ELECTRICAL
TORQUE
SPECIFICATIONS
SEE DWG NO.
128783-01-000

FOR
ELECTRICAL
CALLOUTS
SEE DWG NO.
121339-01-000

DESCRIPTION:		1B1 265
WIRING INSTL-CHASSIS		
SHEET:	ITEM/PART NO:	REV
4 OF 4	000163512 / 32893101000	

8 7 6 5 4 3 2 1 30-Oct-2018