

8 7 6 5 4 3 2 1

D
C
B
A

D
C
B
A

CABLE ASM-CHASSIS BATTERY (RED)	141415-37-018	3
CABLE ASM-COACH BATTERY (YEL)	141415-52-019	
CABLE ASM-COACH BATTERY GND (BLK)	133567-12-007	
CABLE ASM-GENERATOR (GRN)	141415-42-039	3
CABLE ASM-GENERATOR GND (BLK)	133566-12-005	3
CABLE ASM-FRAME GND	133566-12-003	
CABLE ASM-INVERTER FUSE (ORG)	141415-62-005	
CABLE ASM-INVERTER (ORG)	141415-62-020	
CABLE ASM-INVERTER GND (BLK)	133566-12-020	
CABLE ASM-INVERTER CASE GND (GRN)	136145-05-016	

3
3
3

265 CODES/STANDARDS-CSA/CMVSS
1B1 CODES/STANDARDS USA
1B1 265

WINNEBAGO
COPYRIGHT 2016 WINNEBAGO INDUSTRIES, INC.

DSNR:		ALL DIMENSIONS ARE IN MILLIMETERS	
DIFFR:		MATERIAL:	
UNSPECIFIED TOLERANCES:			
WHOLE DIM (X)	: 3		
ONE-PLACE (X.X)	: 1.5		
TWO-PLACE (X.XX)	: 0.50		
ANGLE	: 1°		
REFER TO ES0018 FOR FASTENER TIGHTENING GUIDELINES		WEIGHT: (LBS)	FIRST USED: 19 423A
DESCRIPTION: BATTERY INSTL			
SHEET: 1 OF 2	ITEM/PART NO: 000163508 / 32893001000	REV:	

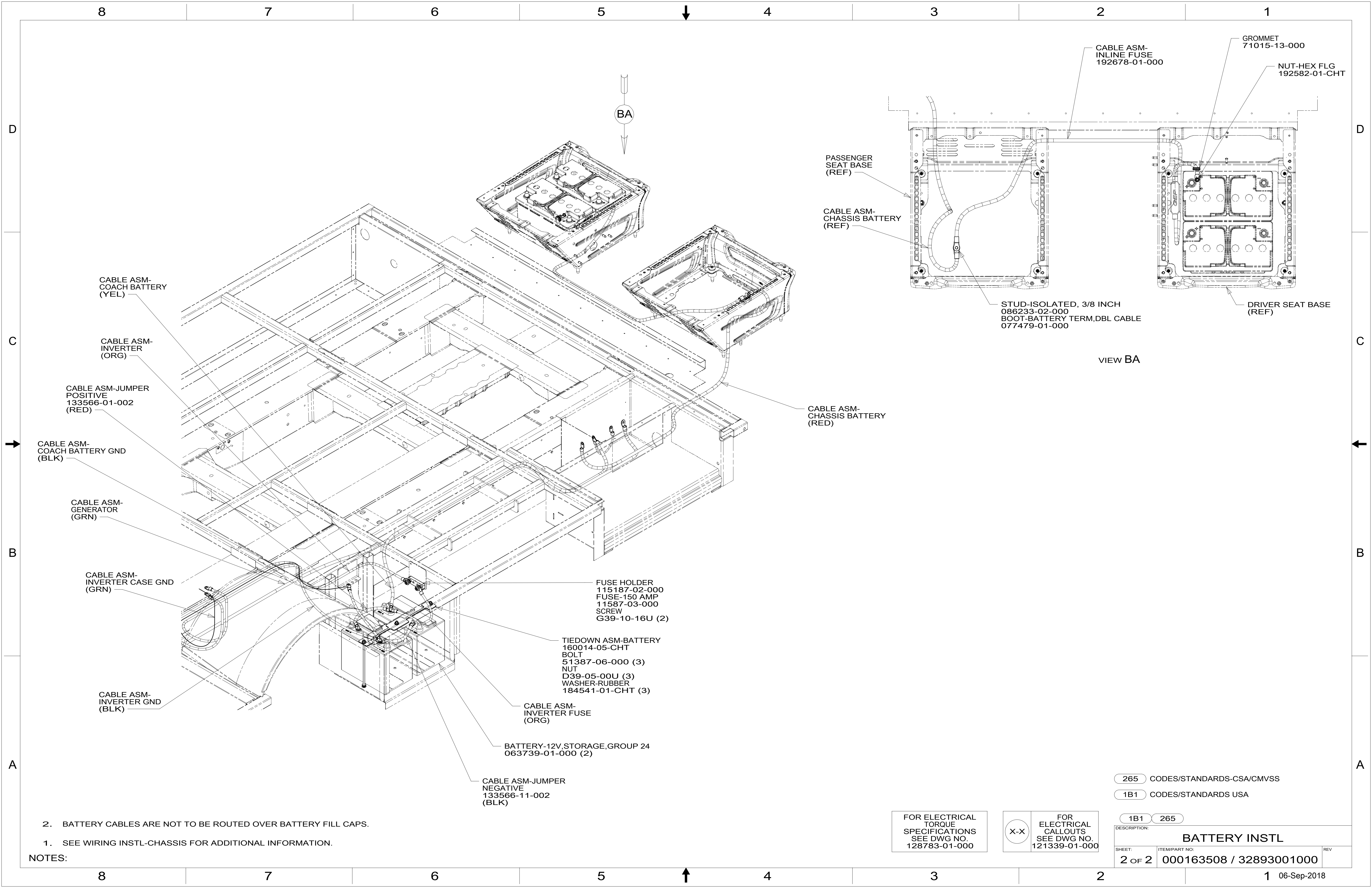
FOR ELECTRICAL TORQUE SPECIFICATIONS SEE DWG NO. 128783-01-000

FOR ELECTRICAL CALLOUTS SEE DWG NO. 121339-01-000

- 3 ROUTING OF CABLE SHOWN IN WIRING INSTL-CHASSIS ONLY.
- BATTERY CABLES ARE NOT TO BE ROUTED OVER BATTERY FILL CAPS.
 - SEE WIRING INSTL-CHASSIS FOR ADDITIONAL INFORMATION.

NOTES:

8 7 6 5 4 3 2 1 06-Sep-2018



- NOTES:
1. SEE WIRING INSTL-CHASSIS FOR ADDITIONAL INFORMATION.
 2. BATTERY CABLES ARE NOT TO BE ROUTED OVER BATTERY FILL CAPS.

FOR ELECTRICAL TORQUE SPECIFICATIONS SEE DWG NO. 128783-01-000

FOR ELECTRICAL CALLOUTS SEE DWG NO. 121339-01-000

- 265 CODES/STANDARDS-CSA/CMVSS
- 1B1 CODES/STANDARDS USA

DESCRIPTION:		1B1 265	
BATTERY INSTL			
SHEET:	ITEM/PART NO.:	REV	
2 OF 2	000163508 / 32893001000		