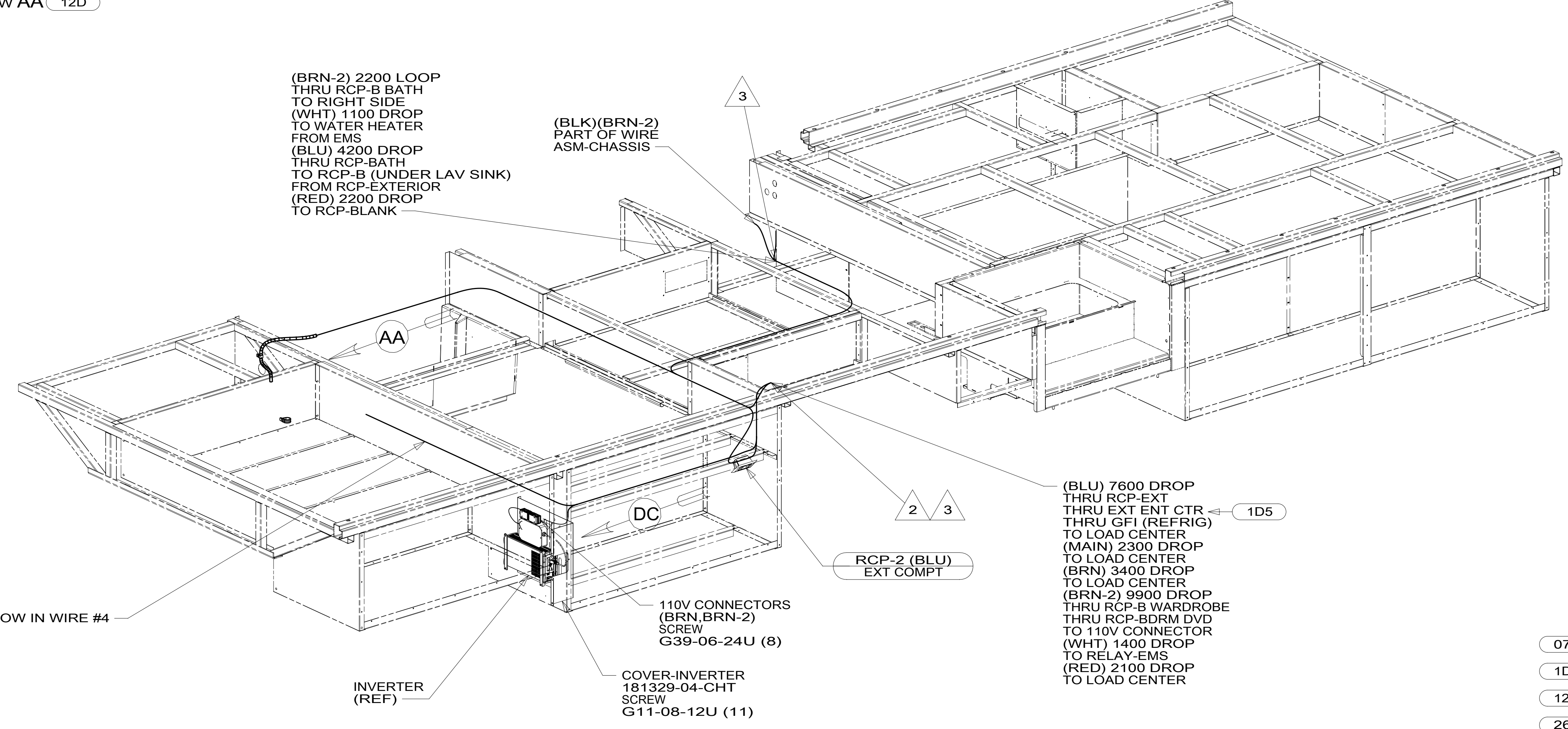
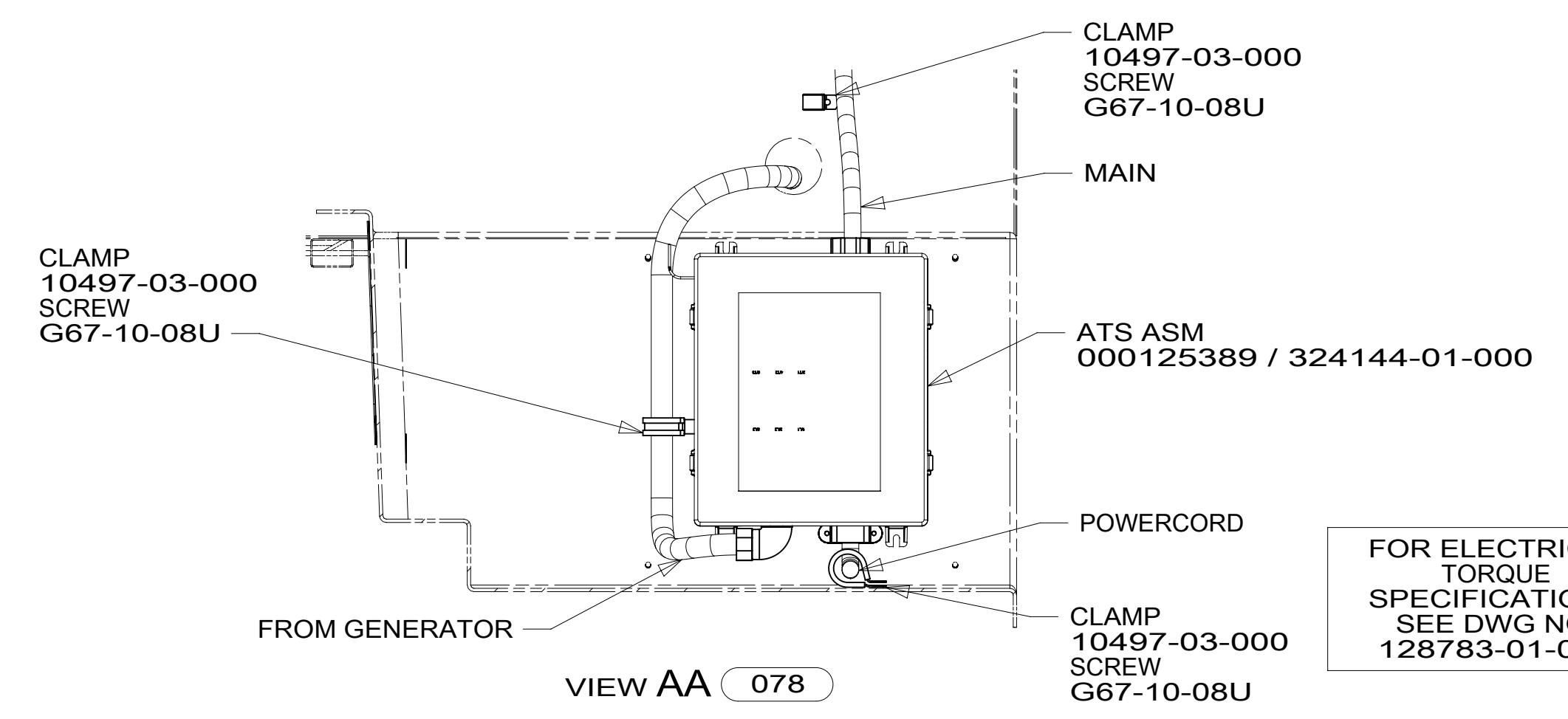


VIEW AA 12D



- NOTES:
- WIRES ROUTED UNDER FLOOR.
 - WIRES ROUTED THROUGH FLOOR IN THIS AREA.
 - ROUTE GROUND WIRE FROM LOAD CENTER AND MODULE-ALS THROUGH FLOOR IN THIS AREA AND CONNECT TO GROUND STUD OF FRAME ASM.
 - AT MINIMUM ALL WIRES TO BE SUPPORTED AND SECURED PER CODE REQUIREMENTS. USE CLAMP 10495 OR 10497 OR WIRE TIE 8343 OR 108046 AND SCREW G67-XX-XXX OR G56-XX-XXX AS APPROPRIATE FOR INSTALLATION.



VIEW AA 078

FOR ELECTRICAL TORQUE SPECIFICATIONS SEE DWG NO. 128783-01-000

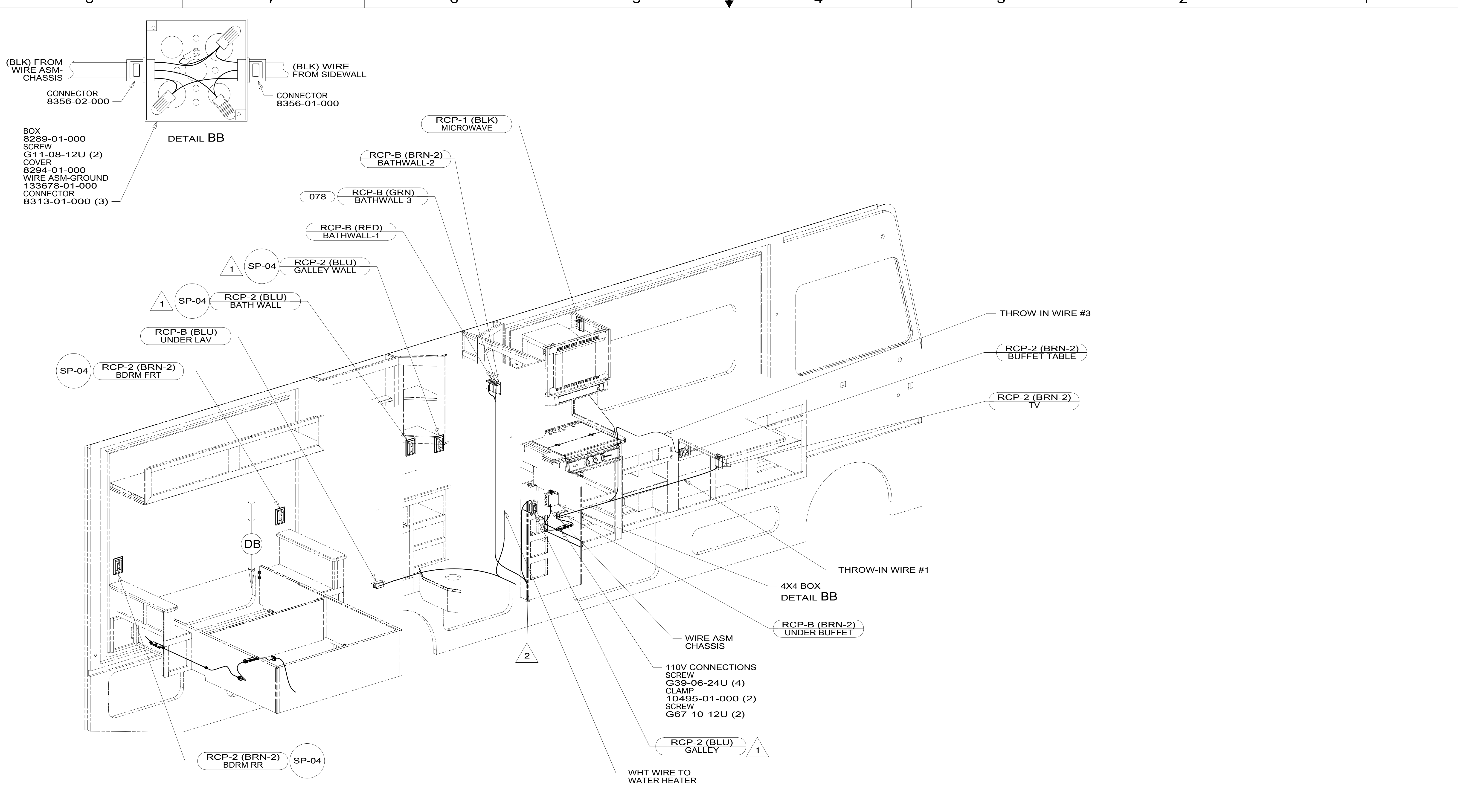
FOR ELECTRICAL CALLOUTS SEE DWG NO. 121339-01-000

- 078 ALL WEATHER UPGRADE PACKAGE
- 1D5 ENTERTAINMENT CENTR/EXT W/CD
- 12D ELECTRICAL SYSTEM 30 AMP
- 265 CODES/STANDARDS-CSA/CMVSS
- 1B1 CODES/STANDARDS USA

1B1 265

COPYRIGHT 2016 WINNEBAGO INDUSTRIES, INC.

DSNR:		ALL DIMENSIONS ARE IN MILLIMETERS	
DIFFR:		MATERIAL:	
UNSPECIFIED TOLERANCES:		WEIGHT: (LBS)	FIRST USED:
WHOLE DIM (X)	3		19 F30T
ONE-PLACE (X.X)	1.5		
TWO-PLACE (X.XX)	0.50		
ANGLE	1°		
REFER TO ES0018 FOR FASTENER TIGHTENING GUIDELINES			
DESCRIPTION: WIRING INSTL-BODY, 110V			
SHEET:	ITEM/PART NO:	REV:	
1 OF 7	000162011 / 32853101000		
REF:			



3. AT MINIMUM ALL WIRES TO BE SUPPORTED AND SECURED PER CODE REQUIREMENTS. USE CLAMP 10495 OR 10497 OR WIRE TIE 8343 OR 108046 AND SCREW G67-XX-XXX OR G56-XX-XXX AS APPROPRIATE FOR INSTALLATION.

- 2 WIRE ROUTED THRU FLOOR IN THIS AREA.
- 1 WIRE ROUTED IN SIDEWALL.

NOTES:

- 078 ALL WEATHER UPGRADE PACKAGE
- 265 CODES/STANDARDS-CSA/CMVSS
- 1B1 CODES/STANDARDS USA

FOR ELECTRICAL TORQUE SPECIFICATIONS SEE DWG NO. 128783-01-000

FOR ELECTRICAL CALLOUTS SEE DWG NO. 121339-01-000

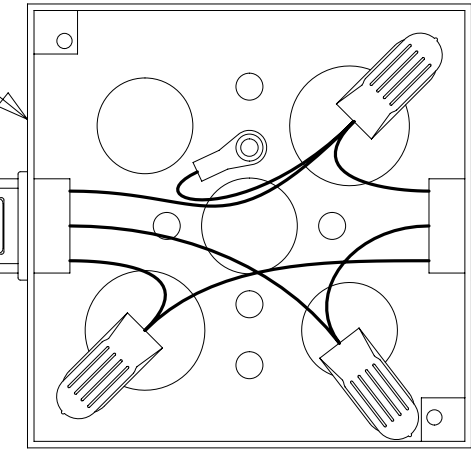
DESCRIPTION:		1B1 265	
WIRING INSTL-BODY, 110V			
SHEET:	ITEM/PART NO.:	REV:	
2 OF 7	000162011 / 32853101000		

8 7 6 5 4 3 2 1

BOX
8289-01-000
SCREW
G11-08-12U (2)
COVER
8294-01-000
WIRE ASM-GROUND
133678-01-000
CONNECTOR
8313-01-000 (3)

12D FROM RELAY-EMS
078 FROM LOAD CENTER

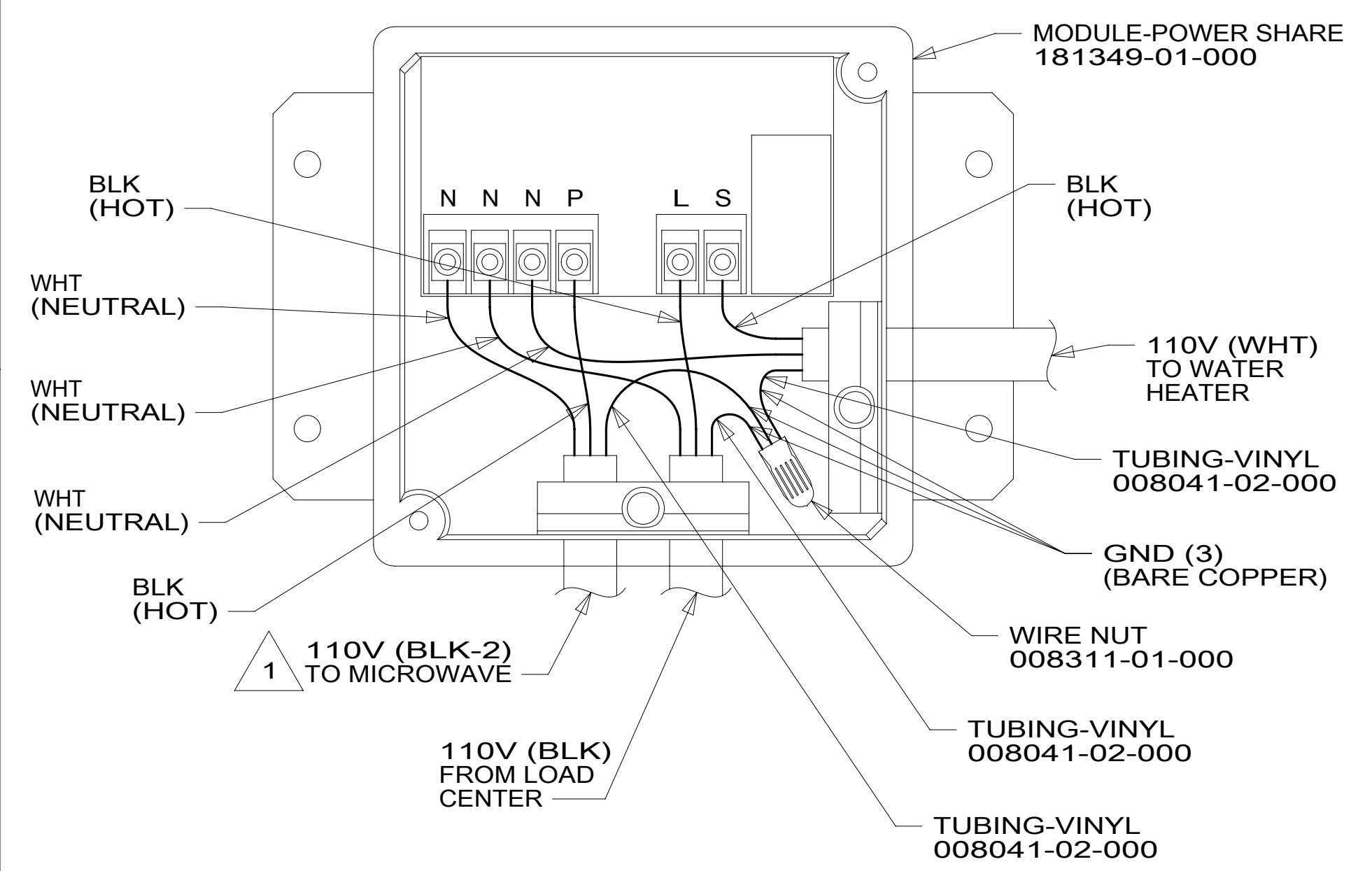
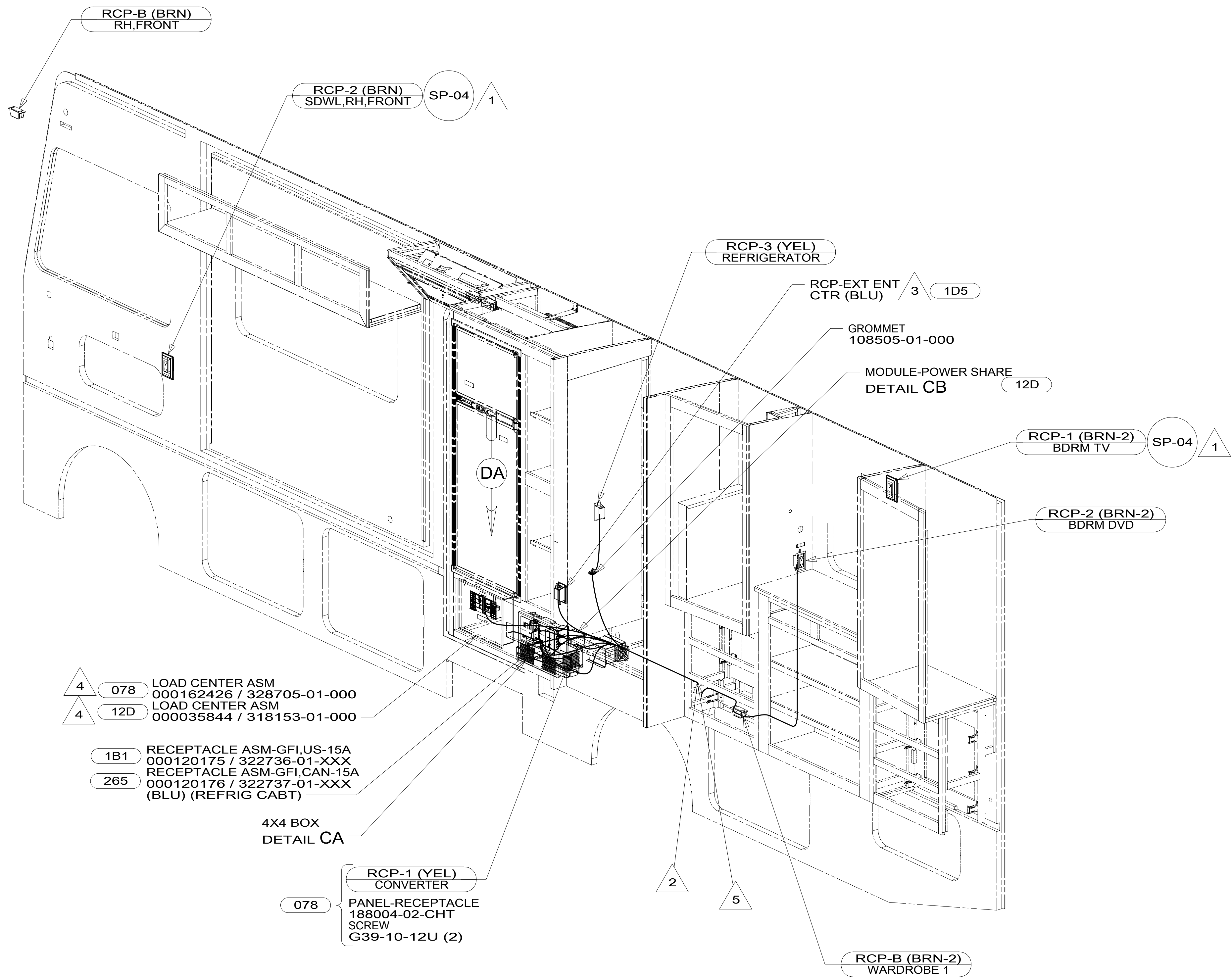
CONNECTOR
8356-01-000



TO 4X4 BOX
UNDER DINETTE
PART OF WIRE
ASM-CHASSIS

CONNECTOR
8356-02-000

DETAIL CA



VIEW CB 12D

- 4 078 LOAD CENTER ASM
000162426 / 328705-01-000
- 4 12D LOAD CENTER ASM
000035844 / 318153-01-000
- 1B1 RECEPTACLE ASM-GFI,US-15A
000120175 / 322736-01-XXX
- 265 RECEPTACLE ASM-GFI,CAN-15A
000120176 / 322737-01-XXX
(BLU) (REFRIG CABT)

4X4 BOX
DETAIL CA

078 RCP-1 (YEL)
CONVERTER
PANEL-RECEPTACLE
188004-02-CHT
SCREW
G39-10-12U (2)

6. AT MINIMUM ALL WIRES TO BE SUPPORTED AND SECURED PER CODE REQUIREMENTS. USE CLAMP 10495 OR 10497 OR WIRE TIE 8343 OR 108046 AND SCREW G67-XX-XXX OR G56-XX-XXX AS APPROPRIATE FOR INSTALLATION.

- 5 WIRES ROUTED THROUGH FLOOR IN THIS AREA.
- 4 LOAD CENTER GROUND WIRES MUST BE ATTACHED DIRECTLY TO CHASSIS GROUND.
- 3 SEE ENTERTAINMENT CENTER COMPL FOR ADDITIONAL INFORMATION.
- 2 ROUTE GROUND WIRE (8 GA GRN) FROM LOAD CENTER THROUGH FLOOR TO GROUND BOLT ON CHASSIS FRAME RAIL.
- 1 WIRE ROUTED IN SIDEWALL.

NOTES:

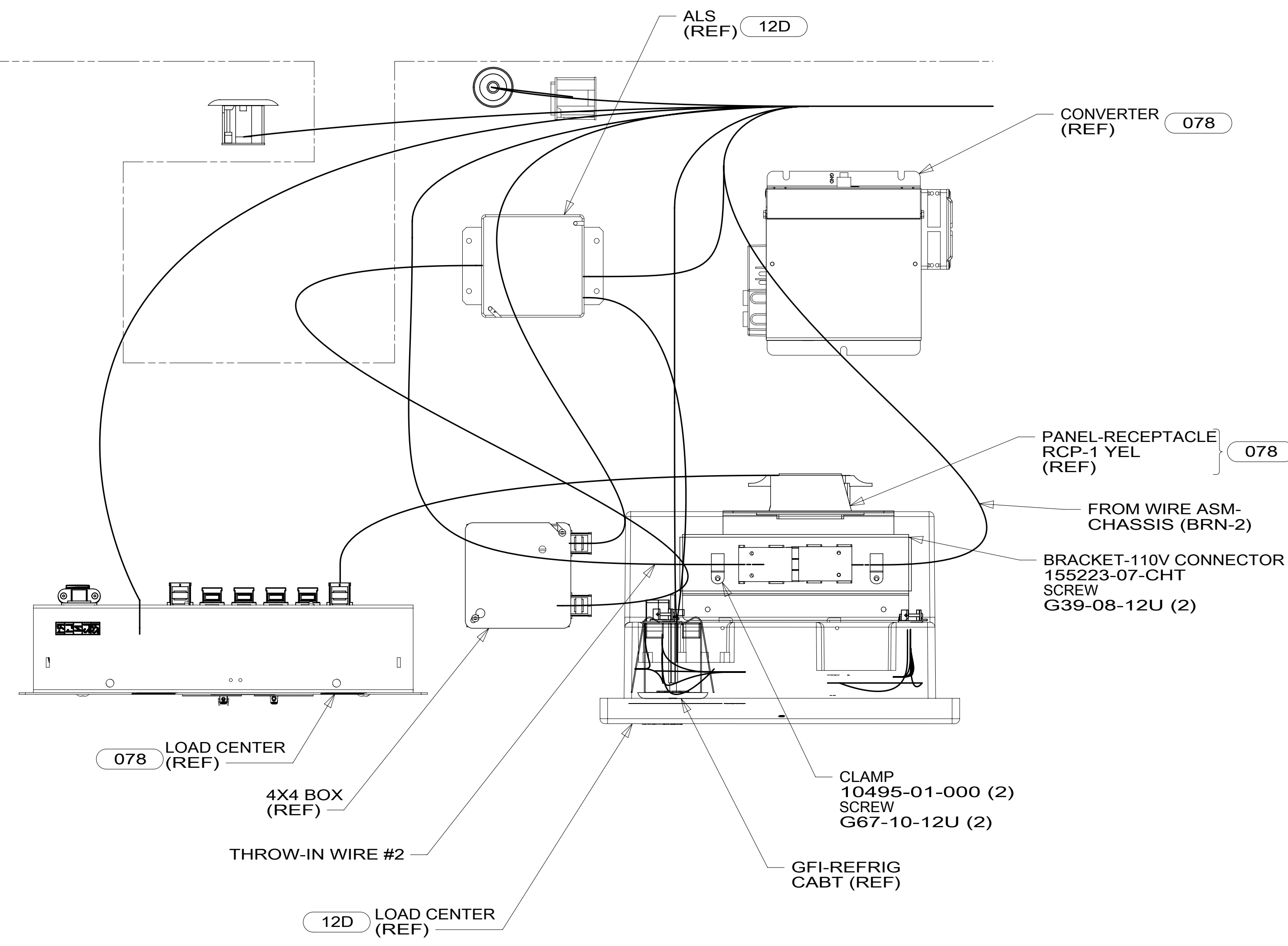
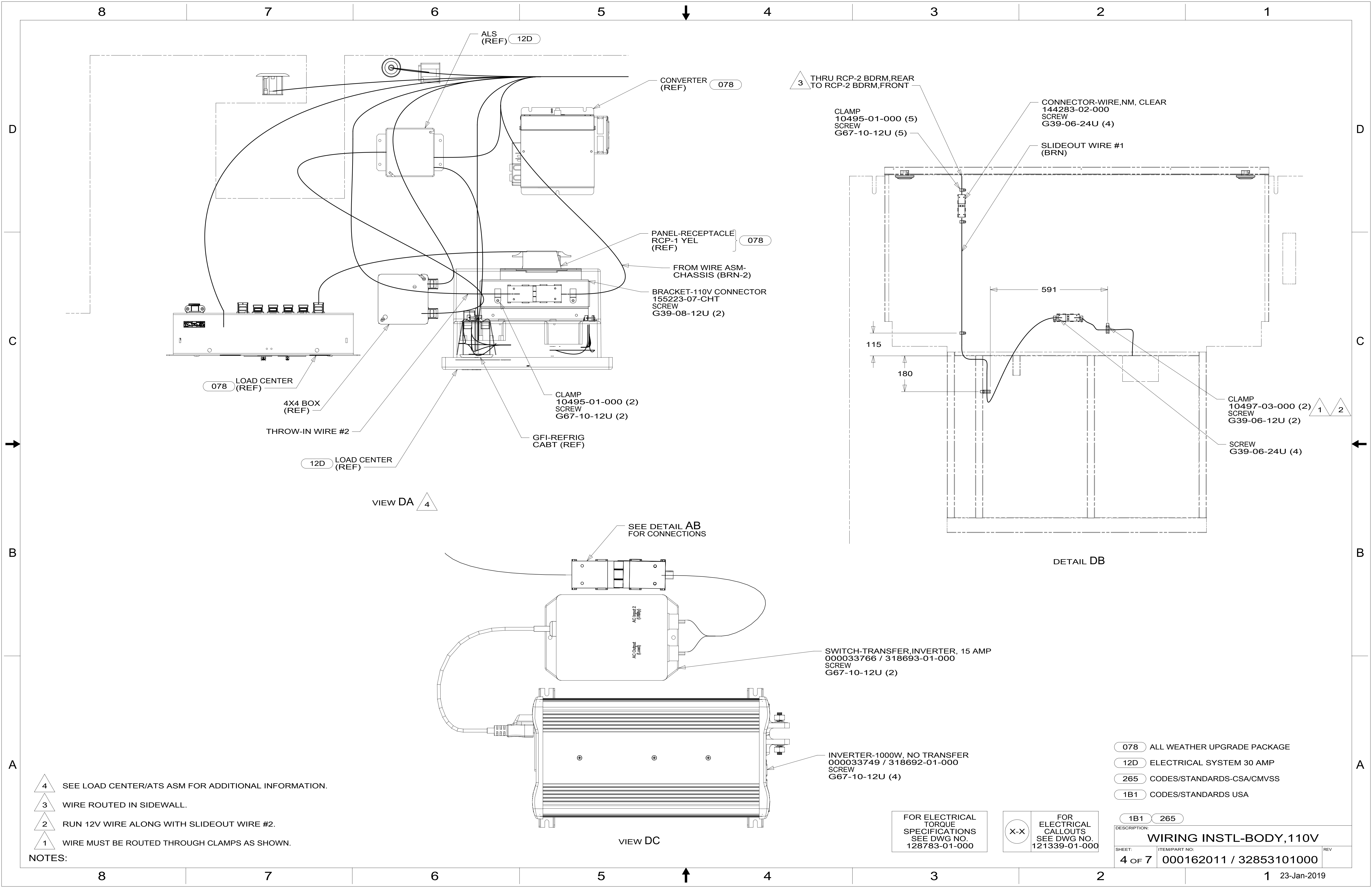
- 12D ELECTRICAL SYSTEM 30 AMP
- 078 ALL WEATHER UPGRADE PACKAGE
- 1D5 ENTERTAINMENT CENTR/EXT W/CD
- 265 CODES/STANDARDS-CSA/CMVSS
- 1B1 CODES/STANDARDS USA

FOR ELECTRICAL TORQUE SPECIFICATIONS SEE DWG NO. 128783-01-000

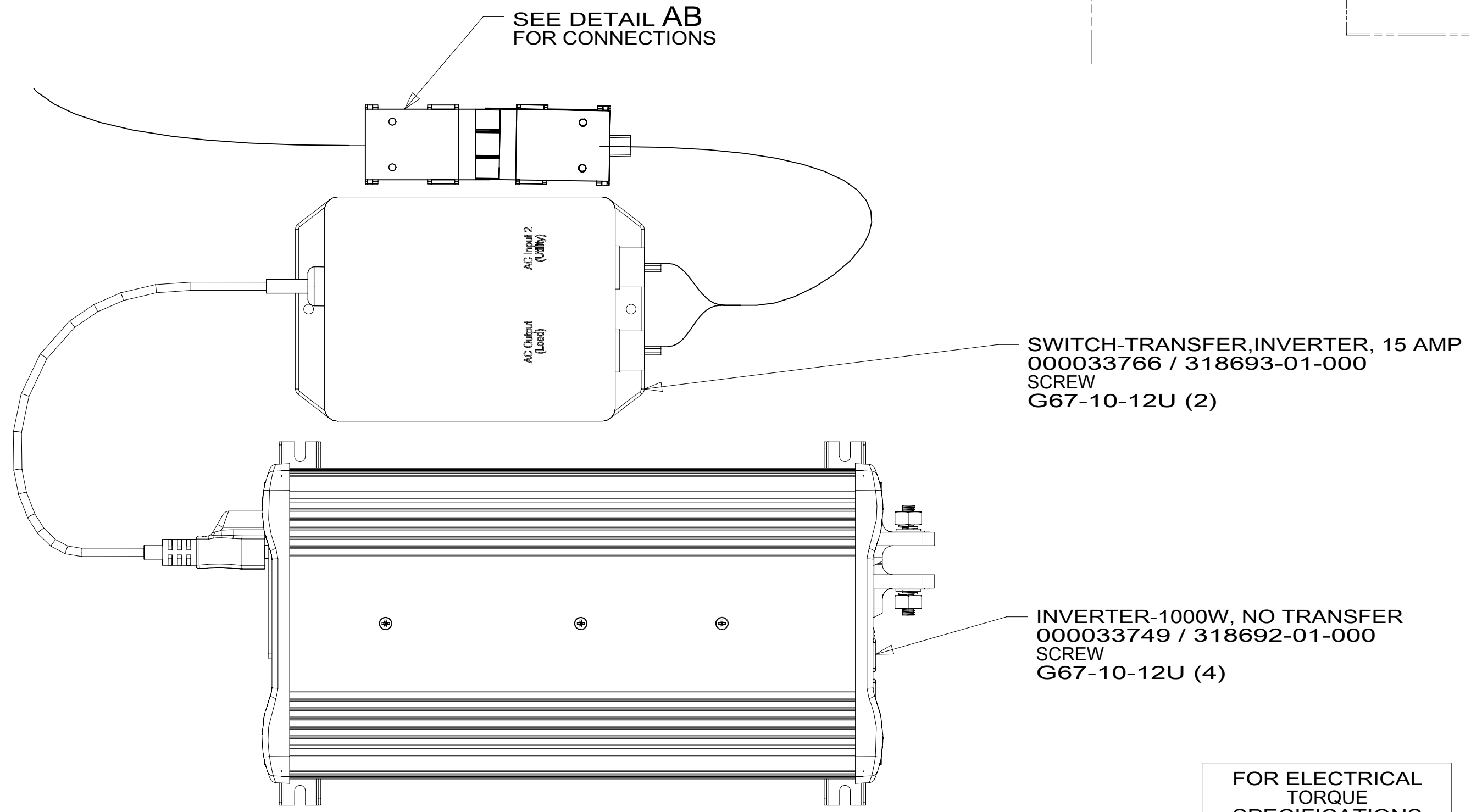
FOR ELECTRICAL CALLOUTS SEE DWG NO. 121339-01-000

DESCRIPTION:		1B1 265
WIRING INSTL-BODY, 110V		
SHEET:	ITEM/PART NO.:	REV
3 OF 7	000162011 / 32853101000	

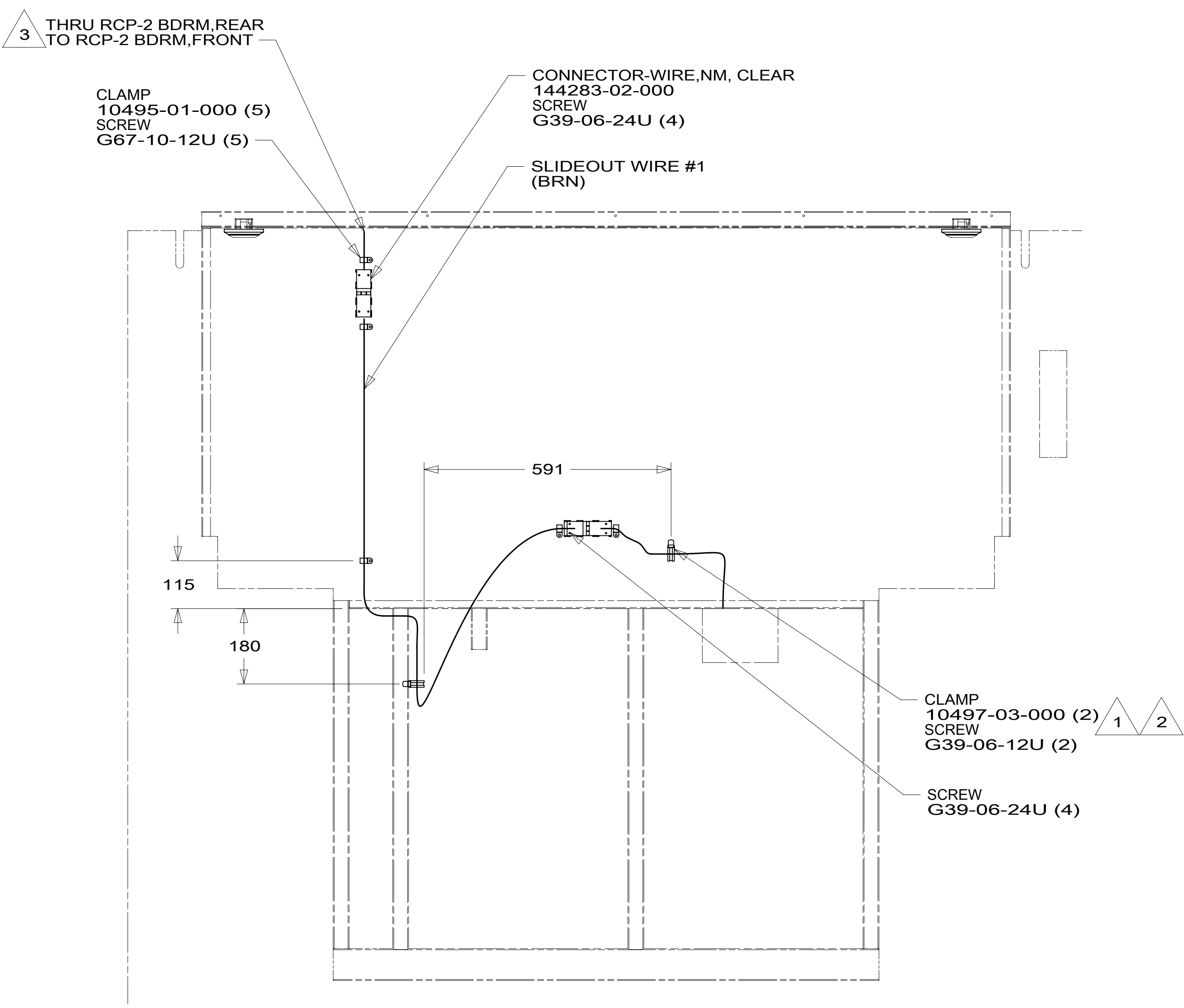
8 7 6 5 4 3 2 1 23-Jan-2019



VIEW DA 4



VIEW DC



DETAIL DB

- NOTES:
- 4 SEE LOAD CENTER/ATS ASM FOR ADDITIONAL INFORMATION.
 - 3 WIRE ROUTED IN SIDEWALL.
 - 2 RUN 12V WIRE ALONG WITH SLIDEOUT WIRE #2.
 - 1 WIRE MUST BE ROUTED THROUGH CLAMPS AS SHOWN.

- 078 ALL WEATHER UPGRADE PACKAGE
- 12D ELECTRICAL SYSTEM 30 AMP
- 265 CODES/STANDARDS-CSA/CMVSS
- 1B1 CODES/STANDARDS USA

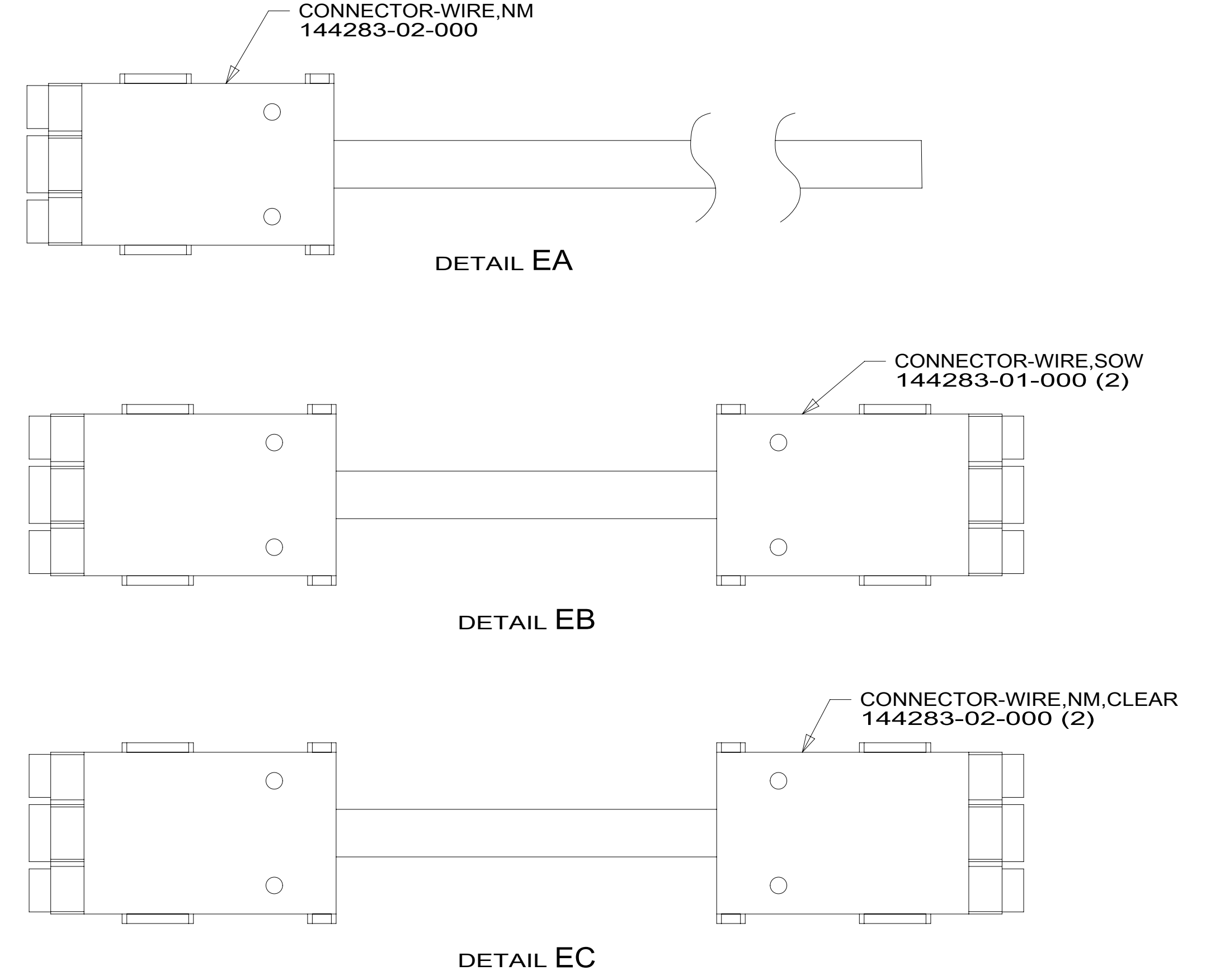
FOR ELECTRICAL TORQUE SPECIFICATIONS SEE DWG NO. 128783-01-000

FOR ELECTRICAL CALLOUTS SEE DWG NO. 121339-01-000

DESCRIPTION:		1B1 265	
WIRING INSTL-BODY, 110V			
SHEET:	ITEM/PART NO.:	REV	
4 OF 7	000162011 / 32853101000		

RED	1B1	136135-07-078	
	265	136136-07-078	
YEL	1B1	136131-05-029	
	265	136134-05-029	
YEL-2	1B1	136131-13-024	078
	265	136134-13-024	078
BRN	1B1	136131-03-048	2
	265	136134-03-048	2
BLU	1B1	136131-02-145	
	265	136134-02-145	
MAIN	1B1	136137-01-069	12D 6
	265	136138-01-069	12D 6
MAIN	1B1	136139-01-064	078 6
	265	136140-01-064	078 6
GRN	1B1	136135-08-078	078
	265	136136-08-078	078
BLK	1B1	136135-06-027	
	265	136136-06-027	
WHT	1B1	136135-09-065	5
	265	136136-09-065	5
THROW IN WIRE #1	1B1	136131-19-021	
	265	136134-19-021	
THROW IN WIRE #2	1B1	136131-19-184	4
	265	136134-19-184	4

THROW IN WIRE #3	1B1	136131-19-028	2
	265	136134-19-028	2
THROW IN WIRE #4	1B1	136131-19-040	2
	265	136134-19-040	2
SLIDEOUT WIRE #1		136151-03-031	3
GROUND ATS		136145-01-042	
GROUND MAIN		178545-01-015	12D
		136145-01-015	078



- 6 ATTACH ONE END OF MAIN TO LOAD CENTER. COVER OTHER END OF MAIN CABLE ASM WITH 1000 MM OF CONDUIT 091234-02-000. SECURE WITH TAPE 8363-01-000.
- 5 SEE DETAIL CB.
- 4 SEE DETAIL EC FOR CONNECTOR INSTALLATION.
- 3 SEE DETAIL EB FOR CONNECTOR INSTALLATION.
- 2 SEE DETAIL EA FOR CONNECTOR INSTALLATION.

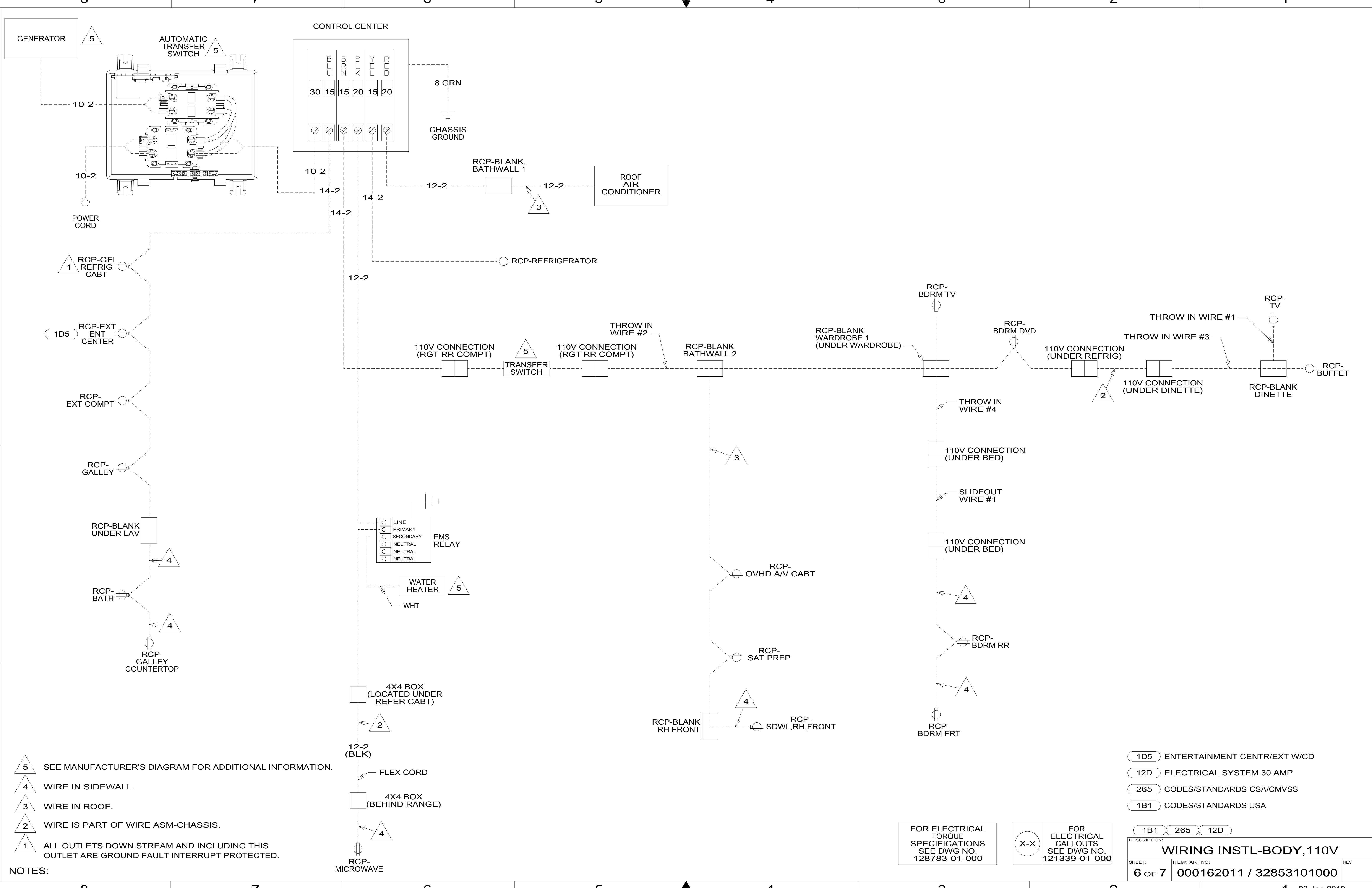
NOTES:
1. ALL GROUND WIRES TO BE COVERED WITH TUBING 8041-02-000.

- 078 ALL WEATHER UPGRADE PACKAGE
- 12D ELECTRICAL SYSTEM 30 AMP
- 265 CODES/STANDARDS-CSA/CMVSS
- 1B1 CODES/STANDARDS USA

FOR ELECTRICAL TORQUE SPECIFICATIONS SEE DWG NO. 128783-01-000

FOR ELECTRICAL CALLOUTS SEE DWG NO. 121339-01-000

DESCRIPTION:	1B1 265	
WIRING INSTL-BODY, 110V		
SHEET:	ITEM/PART NO:	REV
5 OF 7	000162011 / 32853101000	



- NOTES:
- 5 SEE MANUFACTURER'S DIAGRAM FOR ADDITIONAL INFORMATION.
 - 4 WIRE IN SIDEWALL.
 - 3 WIRE IN ROOF.
 - 2 WIRE IS PART OF WIRE ASM-CHASSIS.
 - 1 ALL OUTLETS DOWN STREAM AND INCLUDING THIS OUTLET ARE GROUND FAULT INTERRUPT PROTECTED.

- 1D5 ENTERTAINMENT CENTR/EXT W/CD
- 12D ELECTRICAL SYSTEM 30 AMP
- 265 CODES/STANDARDS-CSA/CMVSS
- 1B1 CODES/STANDARDS USA

FOR ELECTRICAL TORQUE SPECIFICATIONS SEE DWG NO. 128783-01-000

FOR ELECTRICAL CALLOUTS SEE DWG NO. 121339-01-000

DESCRIPTION: WIRING INSTL-BODY, 110V		
SHEET: 6 OF 7	ITEM/PART NO: 000162011 / 32853101000	REV
23-Jan-2019		

