

78Z

95R

VIEW AA

1 ATTACH TO STICK WORK USING BRACKETS AND SCREWS THAT COME WITH CONVERTER.

FOR ELECTRICAL TORQUE SPECIFICATIONS SEE DWG NO. 128783-01-000

FOR ELECTRICAL CALLOUTS SEE DWG NO. 121339-01-000

- 265 CODES/STANDARDS-CSA/CMVSS
- 1B1 CODES/STANDARDS USA
- 1B1 265

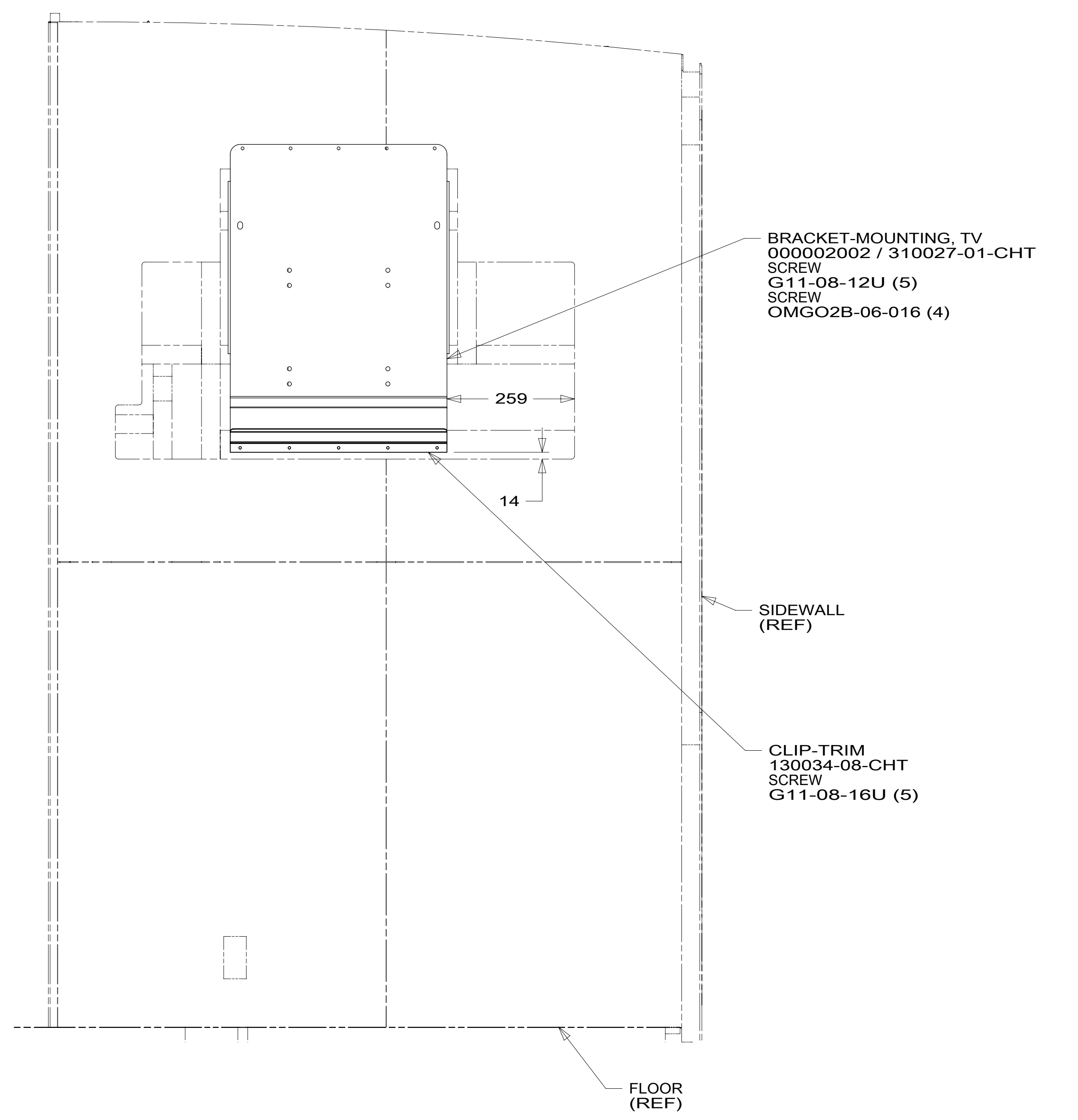
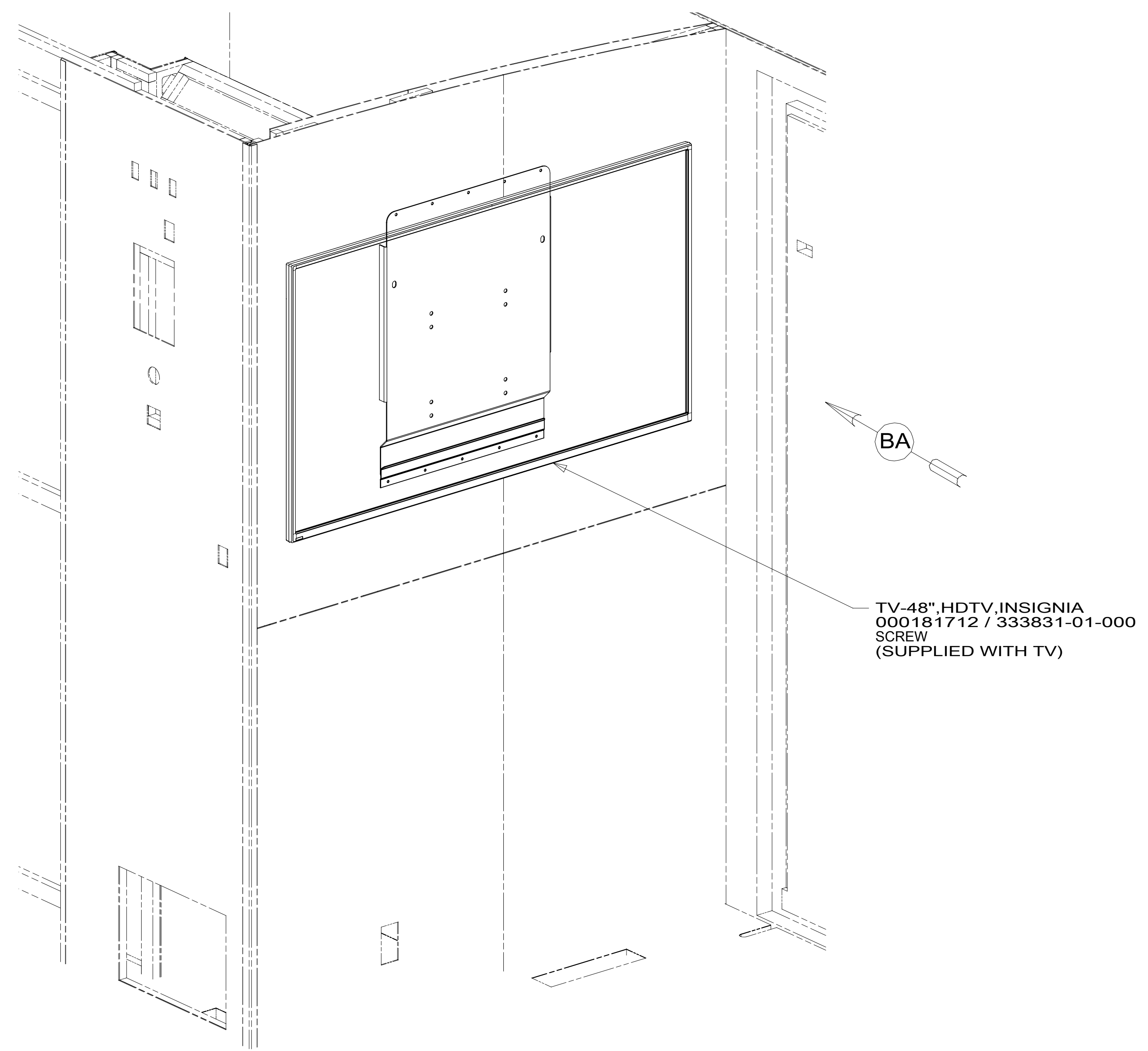
WINNEBAGO
COPYRIGHT 2016 WINNEBAGO INDUSTRIES, INC.

DSNR:	ALL DIMENSIONS ARE IN MILLIMETERS	
DFFR:	MATERIAL:	
UNSPECIFIED TOLERANCES:		
WHOLE DIM (X) :	3	
ONE-PLACE (X.X) :	1.5	
TWO-PLACE (X.XX) :	0.50	
ANGLE :	1°	
REFER TO ES0018 FOR FASTENER TIGHTENING GUIDELINES	WEIGHT: (LBS)	FIRST USED:
		19 F27N
DESCRIPTION:		
WIRING INSTL-TV/DVD		
SHEET:	ITEM/PART NO.:	REV:
1 OF 5	000161554 / 32836101000	
REF:		1 25-Jun-2019

8 7 6 5 4 3 2 1



D
C
B
A



VIEW BA
(TV NOT SHOWN)

- NOTES:
- 110V WIRE TO BE CLAMPED WITH CLAMP 10497-05-000 WITHIN 200MM OF OUTLET BOXES, USE SCREW G67-10-12U.
 - AT MINIMUM ALL WIRES TO BE SUPPORTED AND SECURED PER CODE REQUIREMENTS. USE CLAMP 10495 OR 10497 OR WIRE TIE 8343 OR 108046 AND SCREW G67-XX-XXX OR G56-XX-XXX AS APPROPRIATE FOR INSTALLATION.
 - WHERE WIRES PASS THROUGH HOLES IN STEEL AND NOT OTHERWISE PROTECTED, USE GROMMET 92908-02-000.

FOR ELECTRICAL TORQUE SPECIFICATIONS SEE DWG NO. 128783-01-000

FOR ELECTRICAL CALLOUTS SEE DWG NO. 121339-01-000

265 CODES/STANDARDS-CSA/CMVSS
1B1 CODES/STANDARDS USA

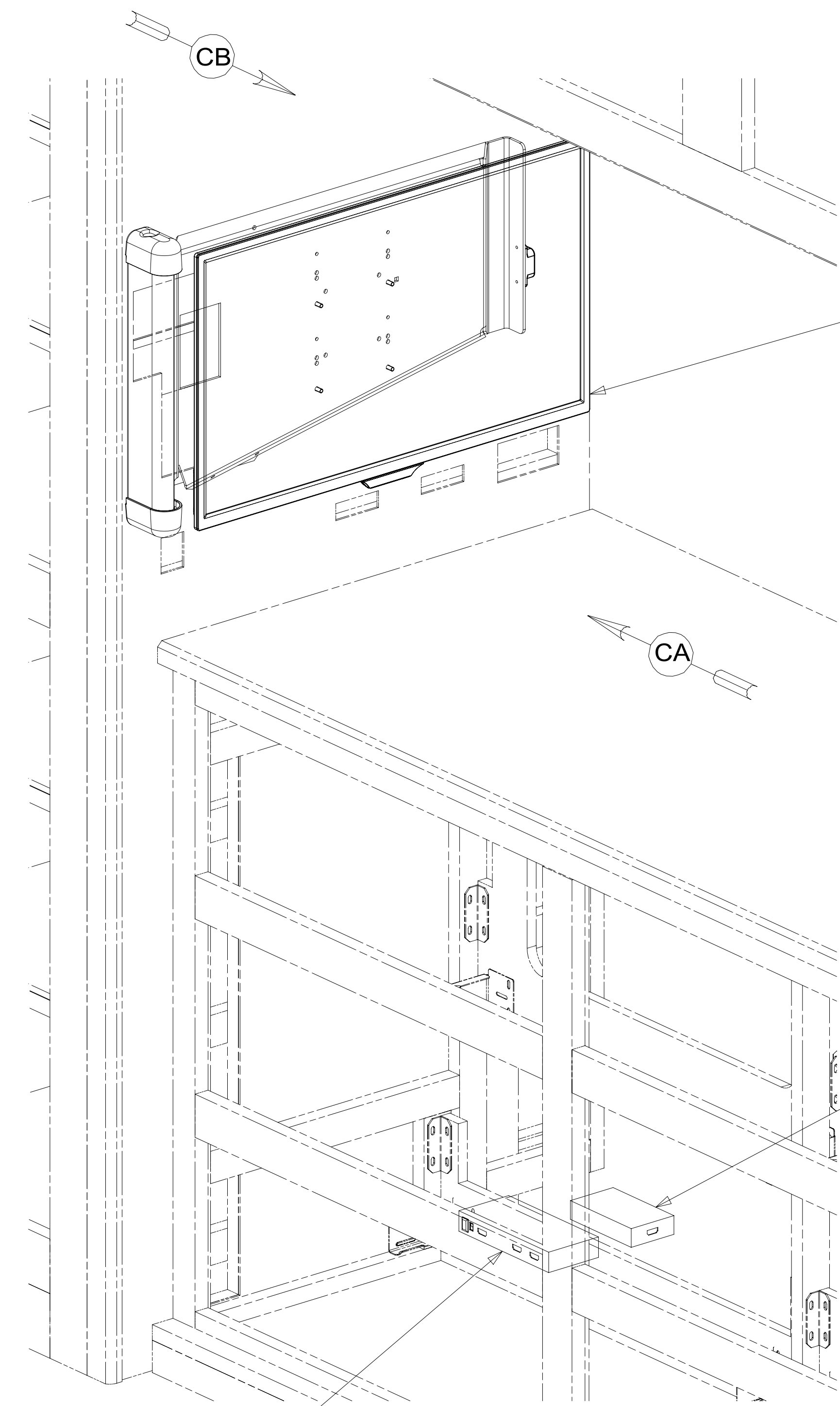
DESCRIPTION: WIRING INSTL-TV/DVD	
SHEET: 2 OF 5	ITEM/PART NO.: 000161554 / 32836101000
REV	

8 7 6 5 4 3 2 1 25-Jun-2019

8 7 6 5 4 3 2 1

D
C
B
A

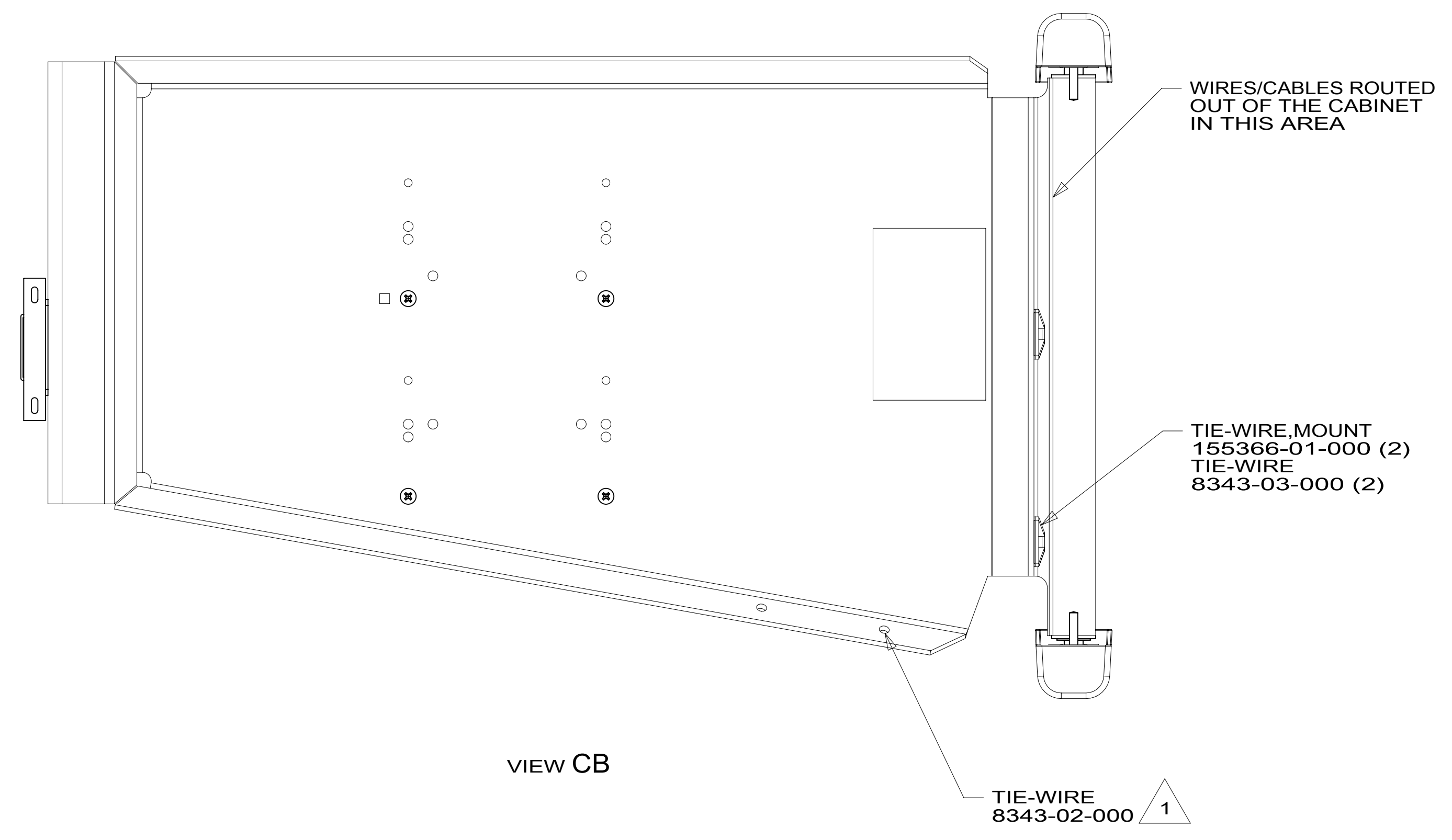
D
C
B
A



TV-24" HDTV, INSIGNIA
 000167921 / 330227-01-000
 BRACKET ASM-MOUNT, TV
 000033449 / 317568-01-XXX
 SCREW
 OMG02U-04-012 (4)
 WASHER
 OME02U-04-071 (4)
 SCREW
 G39-10-16U (5)

CONVERTER-HDMI/CAT6
 (TRANSMITTER)

SPLITTER-HDMI, 1X2
 178632-01-000

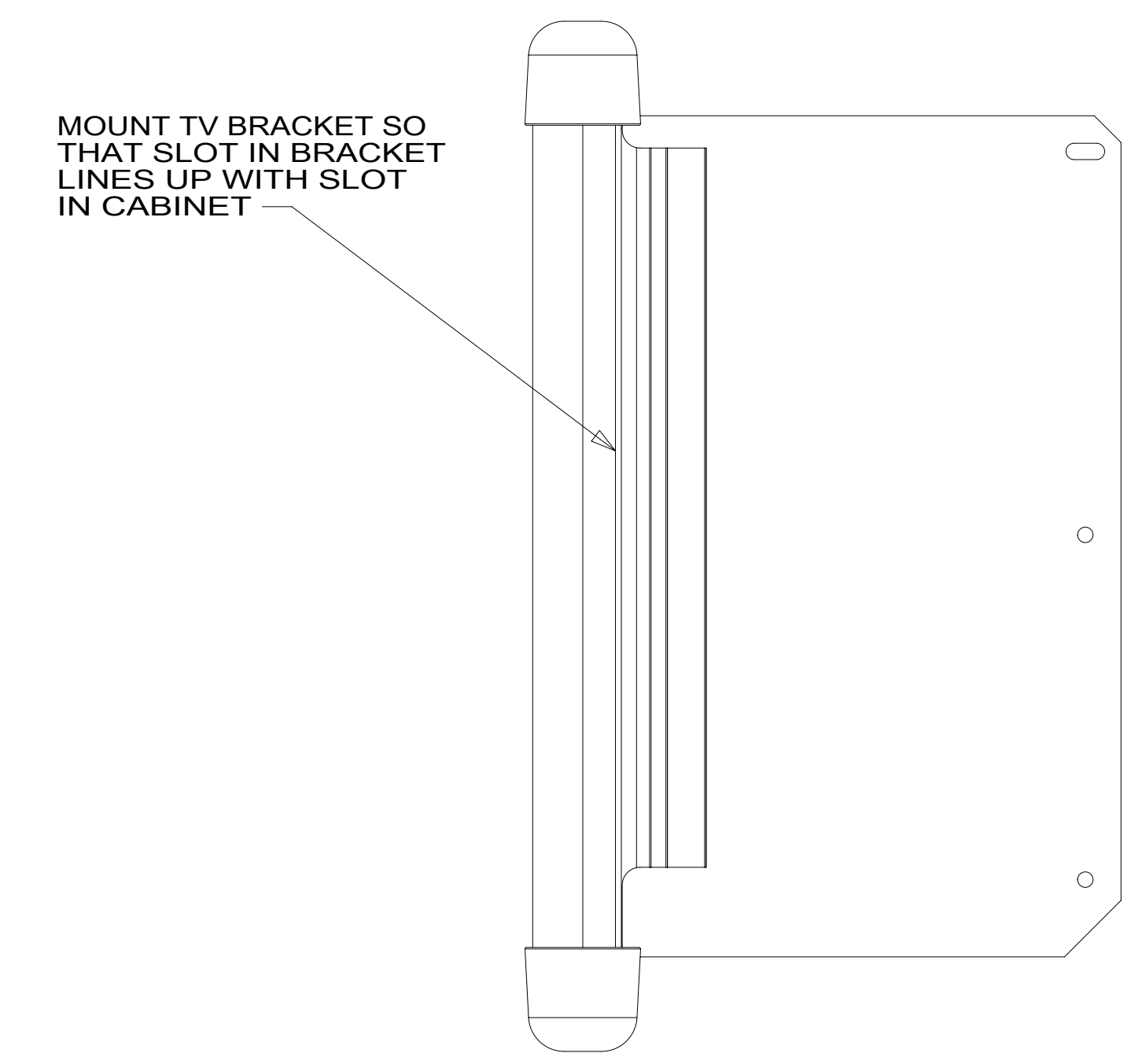


VIEW CB

WIRES/CABLES ROUTED
 OUT OF THE CABINET
 IN THIS AREA

TIE-WIRE, MOUNT
 155366-01-000 (2)
 TIE-WIRE
 8343-03-000 (2)

TIE-WIRE
 8343-02-000 1



VIEW CA

MOUNT TV BRACKET SO
 THAT SLOT IN BRACKET
 LINES UP WITH SLOT
 IN CABINET

1 USE HOLES IN BRACKET ASM-MOUNT, TV TO ATTACH
 WIRE ASM TO BRACKET ASM-MOUNT, TV WITH WIRE TIES.

NOTES:

FOR ELECTRICAL
 TORQUE
 SPECIFICATIONS
 SEE DWG NO.
 128783-01-000

FOR ELECTRICAL
 CALLOUTS
 SEE DWG NO.
 121339-01-000

265 CODES/STANDARDS-CSA/CMVSS
 1B1 CODES/STANDARDS USA

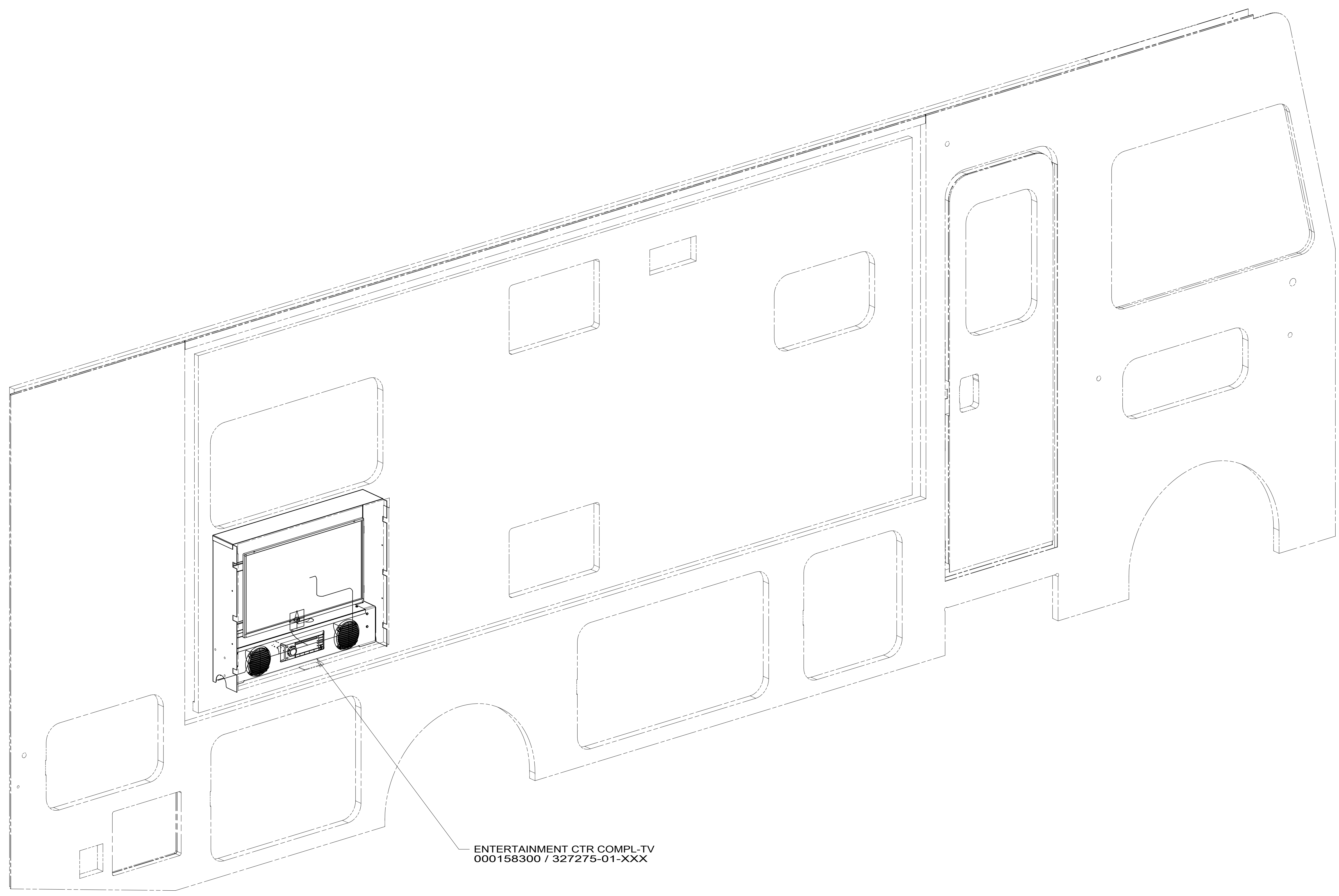
DESCRIPTION:		1B1	265
WIRING INSTL-TV/DVD			
SHEET:	ITEM/PART NO.:	REV	
3 OF 5	000161554 / 32836101000		

8 7 6 5 4 3 2 1 25-Jun-2019

8 7 6 5 4 3 2 1

D
C
B
A

D
C
B
A



ENTERTAINMENT CTR COMPL-TV
000158300 / 327275-01-XXX

1 USE HOLES IN BRACKET ASM-MOUNT,TV TO ATTACH
WIRE ASM TO BRACKET ASM-MOUNT,TV WITH WIRE TIES.

NOTES:

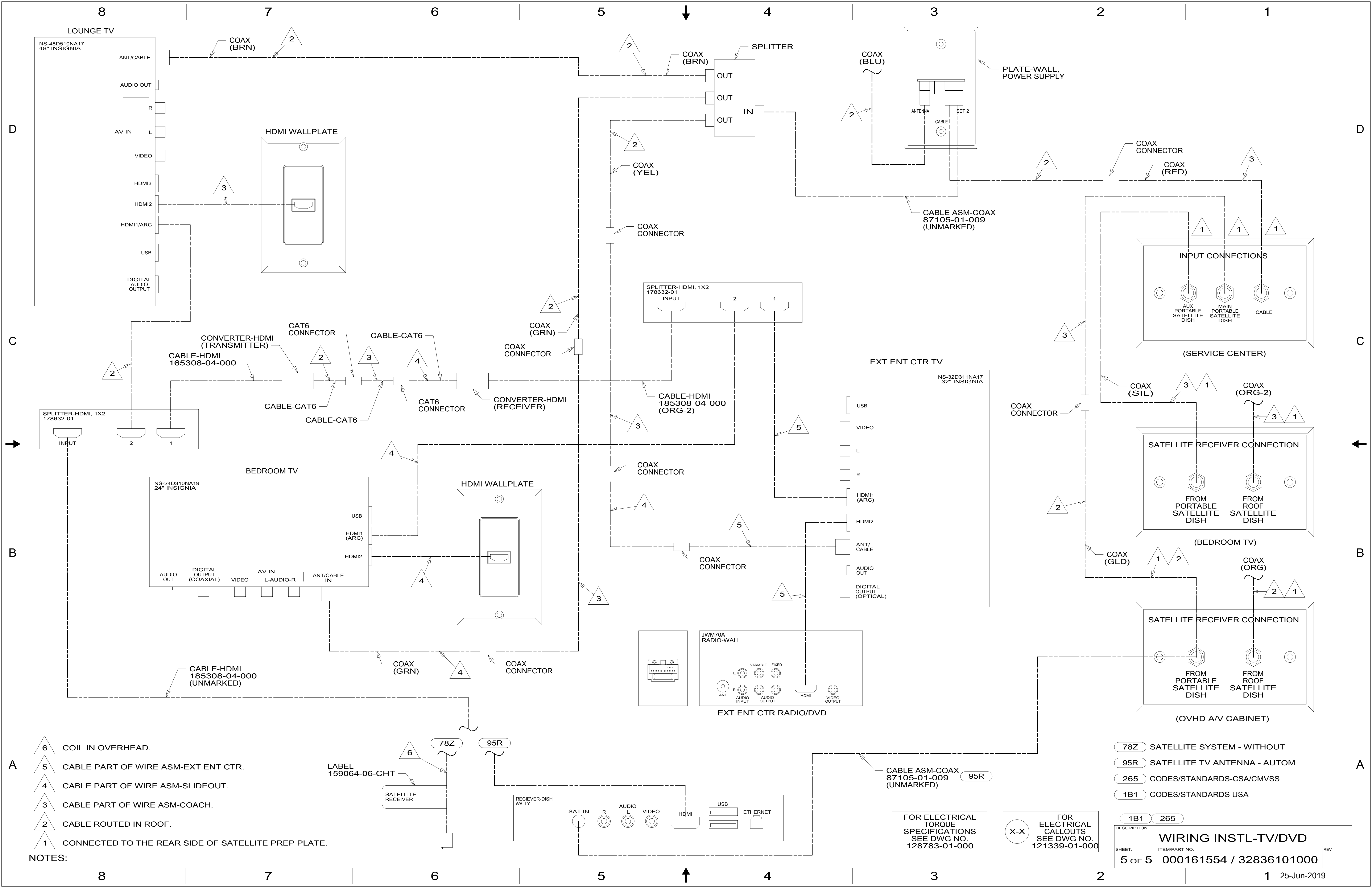
FOR ELECTRICAL
TORQUE
SPECIFICATIONS
SEE DWG NO.
128783-01-000

FOR
ELECTRICAL
CALLOUTS
SEE DWG NO.
121339-01-000

265 CODES/STANDARDS-CSA/CMVSS
1B1 CODES/STANDARDS USA

DESCRIPTION:		1B1	265
WIRING INSTL-TV/DVD			
SHEET:	ITEM/PART NO.:	REV	
4 OF 5	000161554 / 32836101000		

8 7 6 5 4 3 2 1 25-Jun-2019



- NOTES:
- 6 COIL IN OVERHEAD.
 - 5 CABLE PART OF WIRE ASM-EXT ENT CTR.
 - 4 CABLE PART OF WIRE ASM-SLIDEOUT.
 - 3 CABLE PART OF WIRE ASM-COACH.
 - 2 CABLE ROUTED IN ROOF.
 - 1 CONNECTED TO THE REAR SIDE OF SATELLITE PREP PLATE.

- 78Z SATELLITE SYSTEM - WITHOUT
- 95R SATELLITE TV ANTENNA - AUTOM
- 265 CODES/STANDARDS-CSA/CMVSS
- 1B1 CODES/STANDARDS USA

FOR ELECTRICAL TORQUE SPECIFICATIONS SEE DWG NO. 128783-01-000

FOR ELECTRICAL CALLOUTS SEE DWG NO. 121339-01-000

DESCRIPTION:		WIRING INSTL-TV/DVD	
SHEET:	ITEM/PART NO.:	REV	
5 OF 5	000161554 / 32836101000		