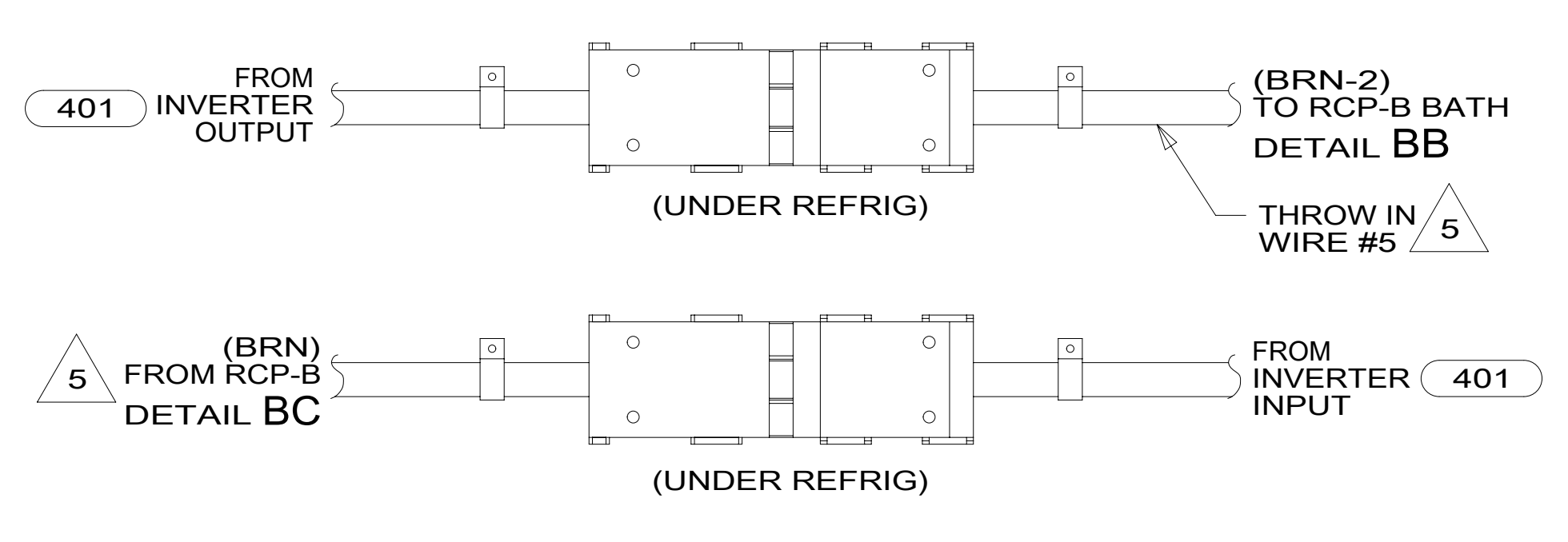


- 5 WITHOUT INVERTER THROW IN #2 (BRN-2) CONNECTS TO (BRN) FROM LOAD CENTER.
- 4 WIRE ROUTED THROUGH FLOOR IN THIS AREA.
- 3 SEE LOAD CENTER/ATS ASM FOR ADDITIONAL INFORMATION.
2. WIRES ROUTED UNDER FLOOR.
1. AT MINIMUM ALL WIRES TO BE SUPPORTED AND SECURED PER CODE REQUIREMENTS. USE CLAMP 10495 OR 10497 OR WIRE TIE 8343 OR 108046 AND SCREW G67-XX-XXX OR G56-XX-XXX AS APPROPRIATE FOR INSTALLATION.



FOR ELECTRICAL TORQUE SPECIFICATIONS SEE DWG NO. 128783-01-000

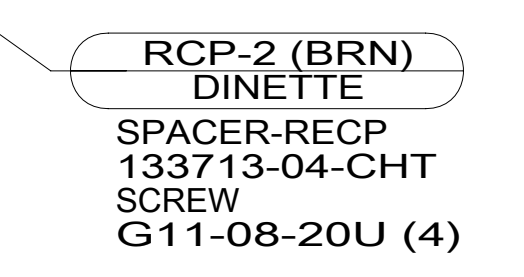
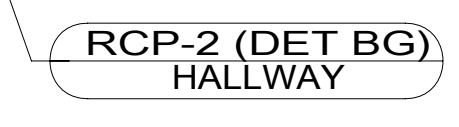
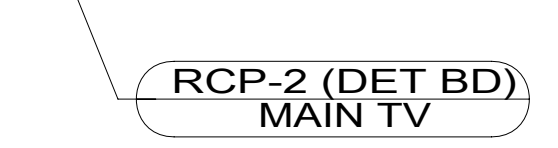
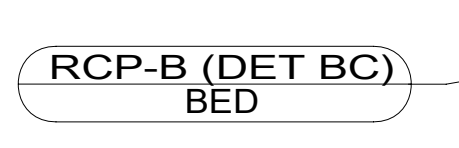
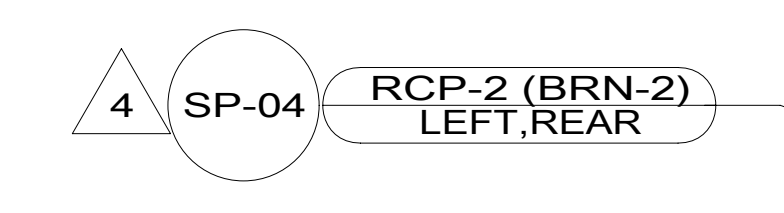
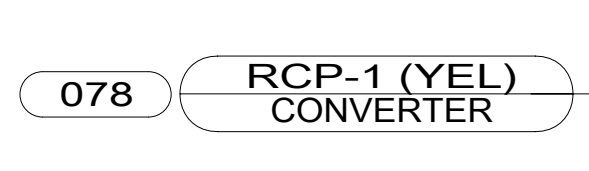
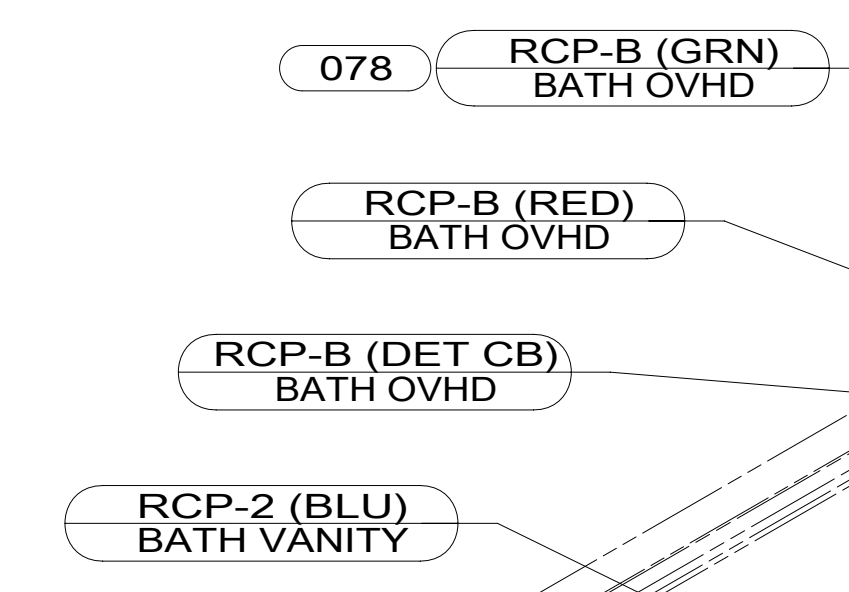
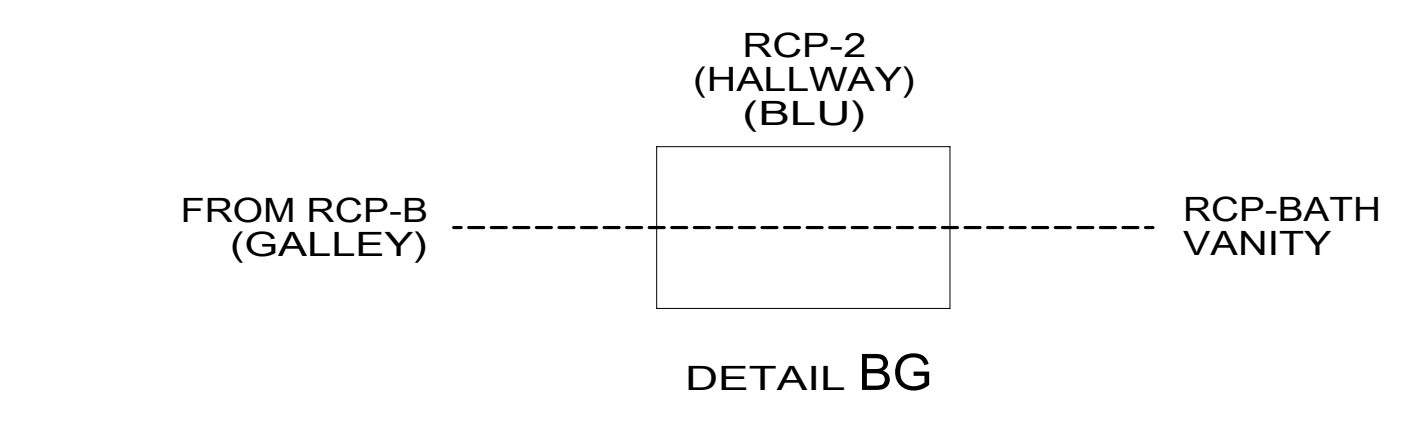
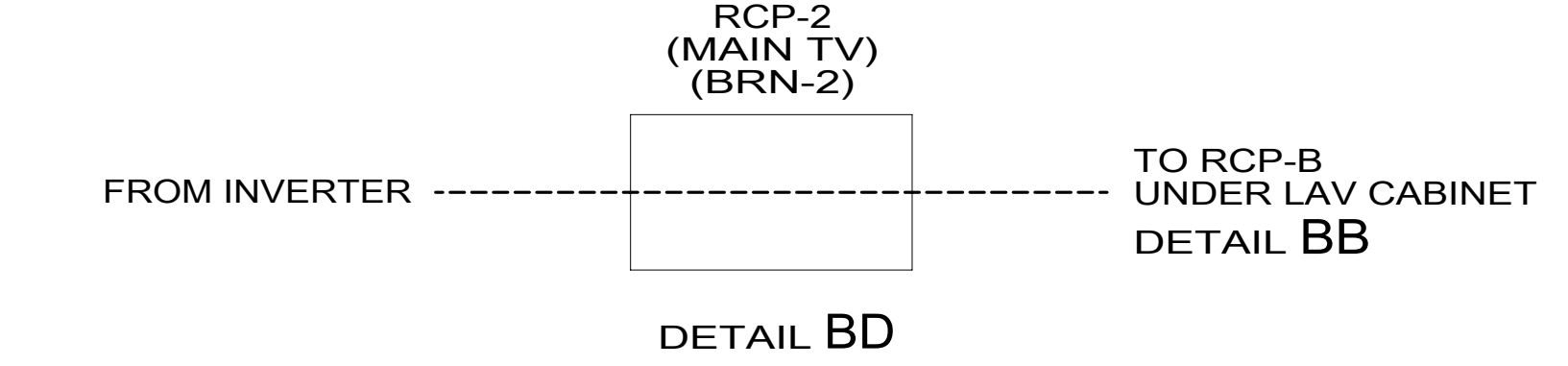
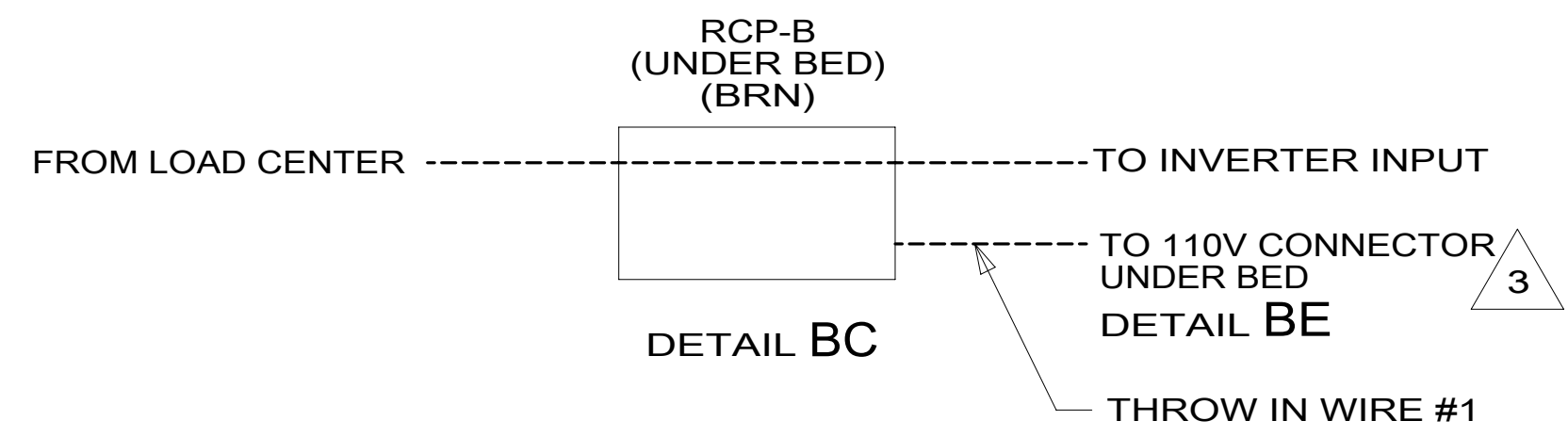
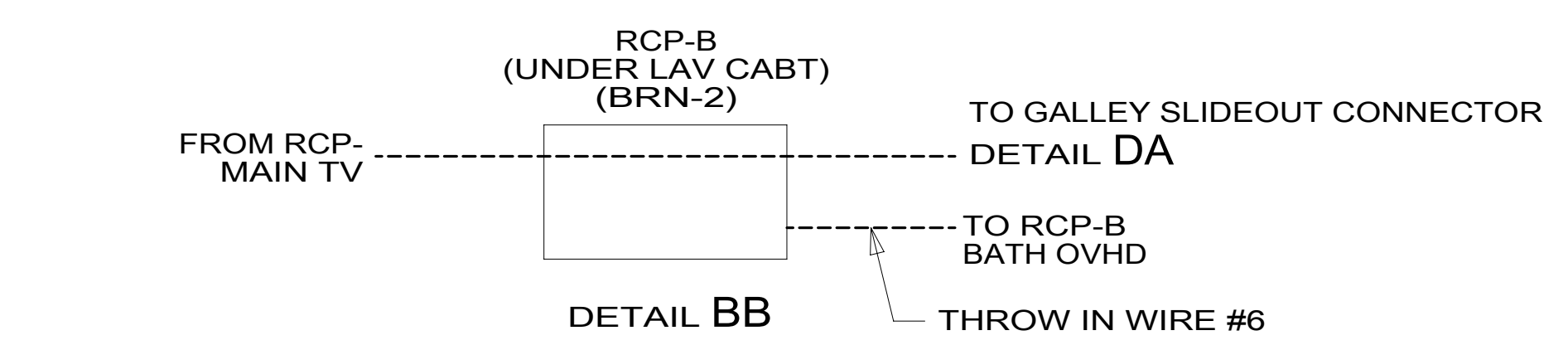
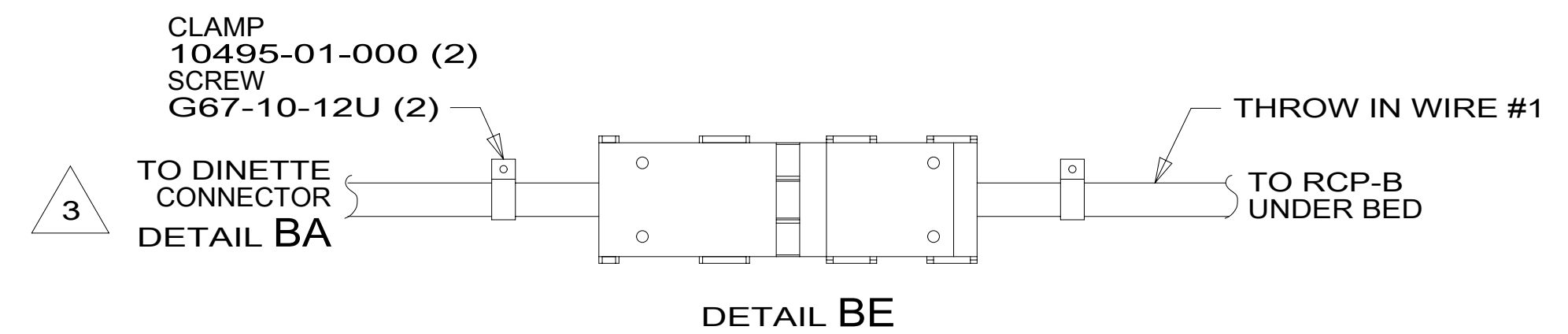
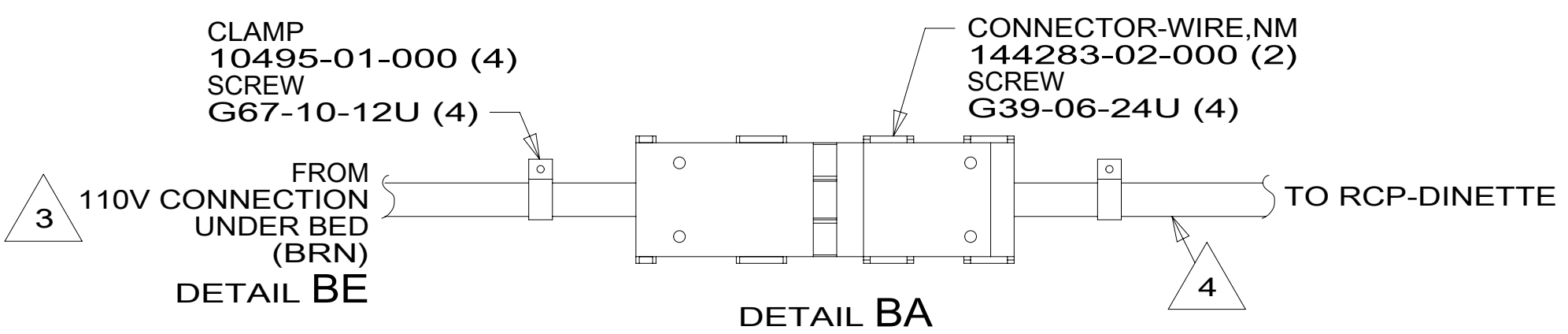
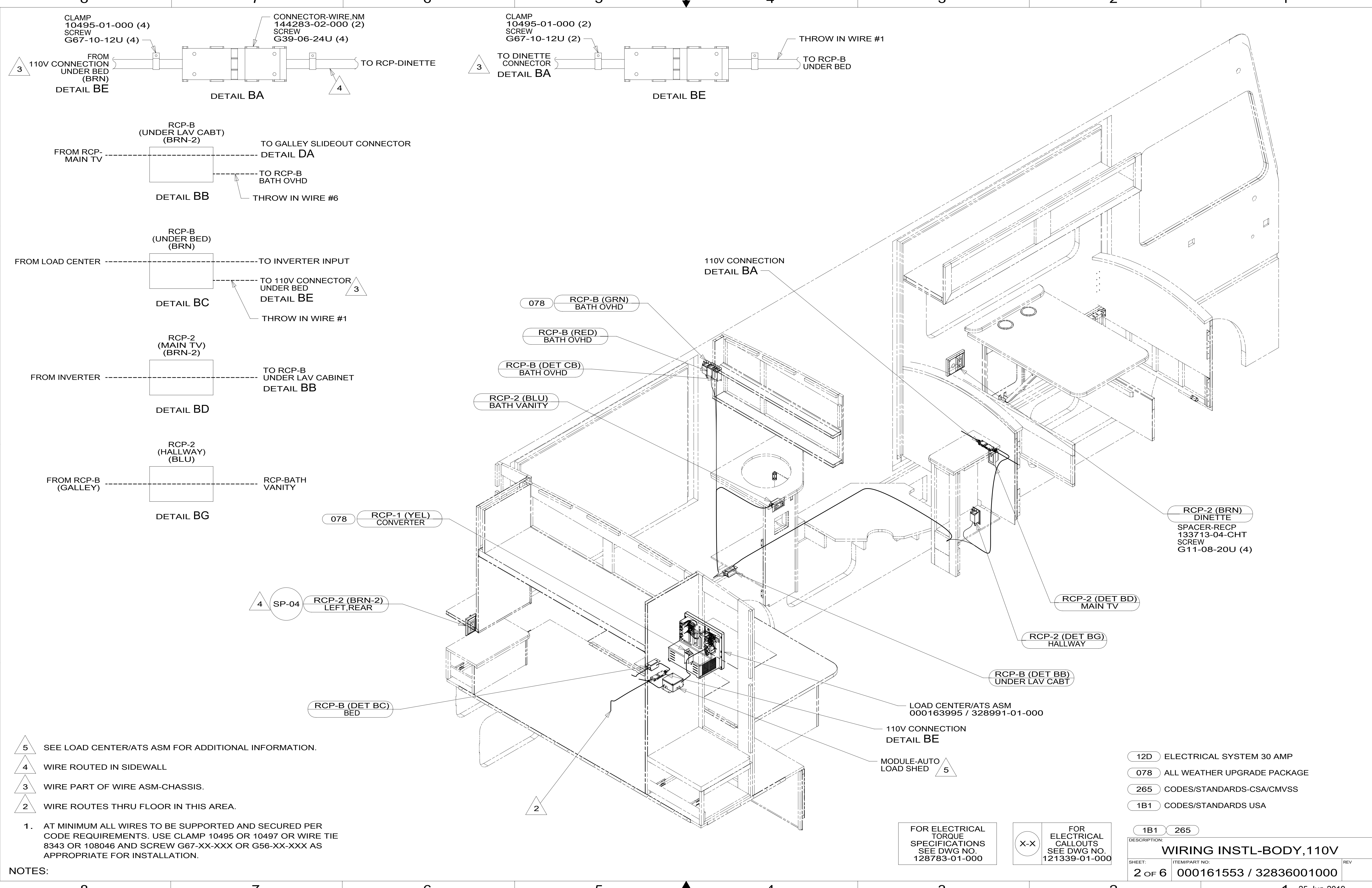
FOR ELECTRICAL CALLOUTS SEE DWG NO. 121339-01-000

- 078 ALL WEATHER UPGRADE PACKAGE
- 401 INVERTER-DC/AC, 1000 WATT
- 12D ELECTRICAL SYSTEM 30 AMP
- 265 CODES/STANDARDS-CSA/CMVSS
- 1B1 CODES/STANDARDS USA

1B1 265

WINNEBAGO
COPYRIGHT 2016 WINNEBAGO INDUSTRIES, INC.

DSNR:		ALL DIMENSIONS ARE IN MILLIMETERS
DFFR:		
UNSPECIFIED TOLERANCES:		MATERIAL:
WHOLE DIM (X)	: 3	
ONE-PLACE (X.X)	: 1.5	
TWO-PLACE (X.XX)	: 0.50	
ANGLE	: 1°	
REFER TO ES0018 FOR FASTENER TIGHTENING GUIDELINES	WEIGHT: (LBS)	FIRST USED:
		19 F27N
DESCRIPTION: WIRING INSTL-BODY, 110V		
SHEET: 1 OF 6	ITEM/PART NO: 000161553 / 32836001000	REV:
REF:		1 25-Jun-2019



- 5 SEE LOAD CENTER/ATS ASM FOR ADDITIONAL INFORMATION.
- 4 WIRE ROUTED IN SIDEWALL
- 3 WIRE PART OF WIRE ASM-CHASSIS.
- 2 WIRE ROUTES THRU FLOOR IN THIS AREA.

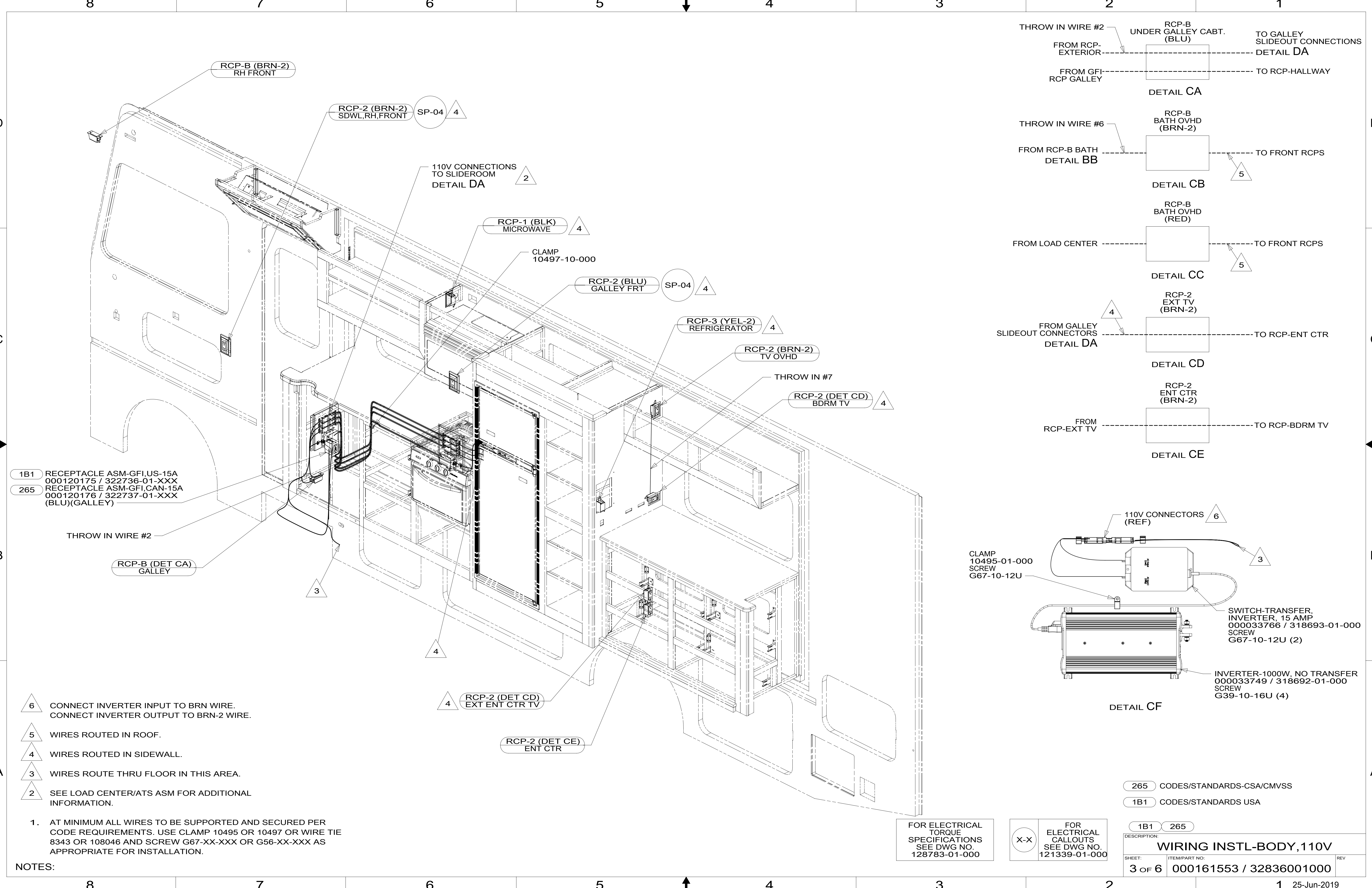
1. AT MINIMUM ALL WIRES TO BE SUPPORTED AND SECURED PER CODE REQUIREMENTS. USE CLAMP 10495 OR 10497 OR WIRE TIE 8343 OR 108046 AND SCREW G67-XX-XXX OR G56-XX-XXX AS APPROPRIATE FOR INSTALLATION.

FOR ELECTRICAL TORQUE SPECIFICATIONS SEE DWG NO. 128783-01-000

FOR ELECTRICAL CALLOUTS SEE DWG NO. 121339-01-000

- 12D ELECTRICAL SYSTEM 30 AMP
- 078 ALL WEATHER UPGRADE PACKAGE
- 265 CODES/STANDARDS-CSA/CMVSS
- 1B1 CODES/STANDARDS USA

DESCRIPTION: WIRING INSTL-BODY, 110V	
SHEET: 2 OF 6	ITEM/PART NO: 000161553 / 32836001000
REV 1 25-Jun-2019	



- 1B1 RECEPTACLE ASM-GFI,US-15A
000120175 / 322736-01-XXX
- 265 RECEPTACLE ASM-GFI,CAN-15A
000120176 / 322737-01-XXX
(BLU)(GALLEY)

- 6 CONNECT INVERTER INPUT TO BRN WIRE.
CONNECT INVERTER OUTPUT TO BRN-2 WIRE.
- 5 WIRES ROUTED IN ROOF.
- 4 WIRES ROUTED IN SIDEWALL.
- 3 WIRES ROUTE THRU FLOOR IN THIS AREA.
- 2 SEE LOAD CENTER/ATS ASM FOR ADDITIONAL
INFORMATION.

1. AT MINIMUM ALL WIRES TO BE SUPPORTED AND SECURED PER
CODE REQUIREMENTS. USE CLAMP 10495 OR 10497 OR WIRE TIE
8343 OR 108046 AND SCREW G67-XX-XXX OR G56-XX-XXX AS
APPROPRIATE FOR INSTALLATION.

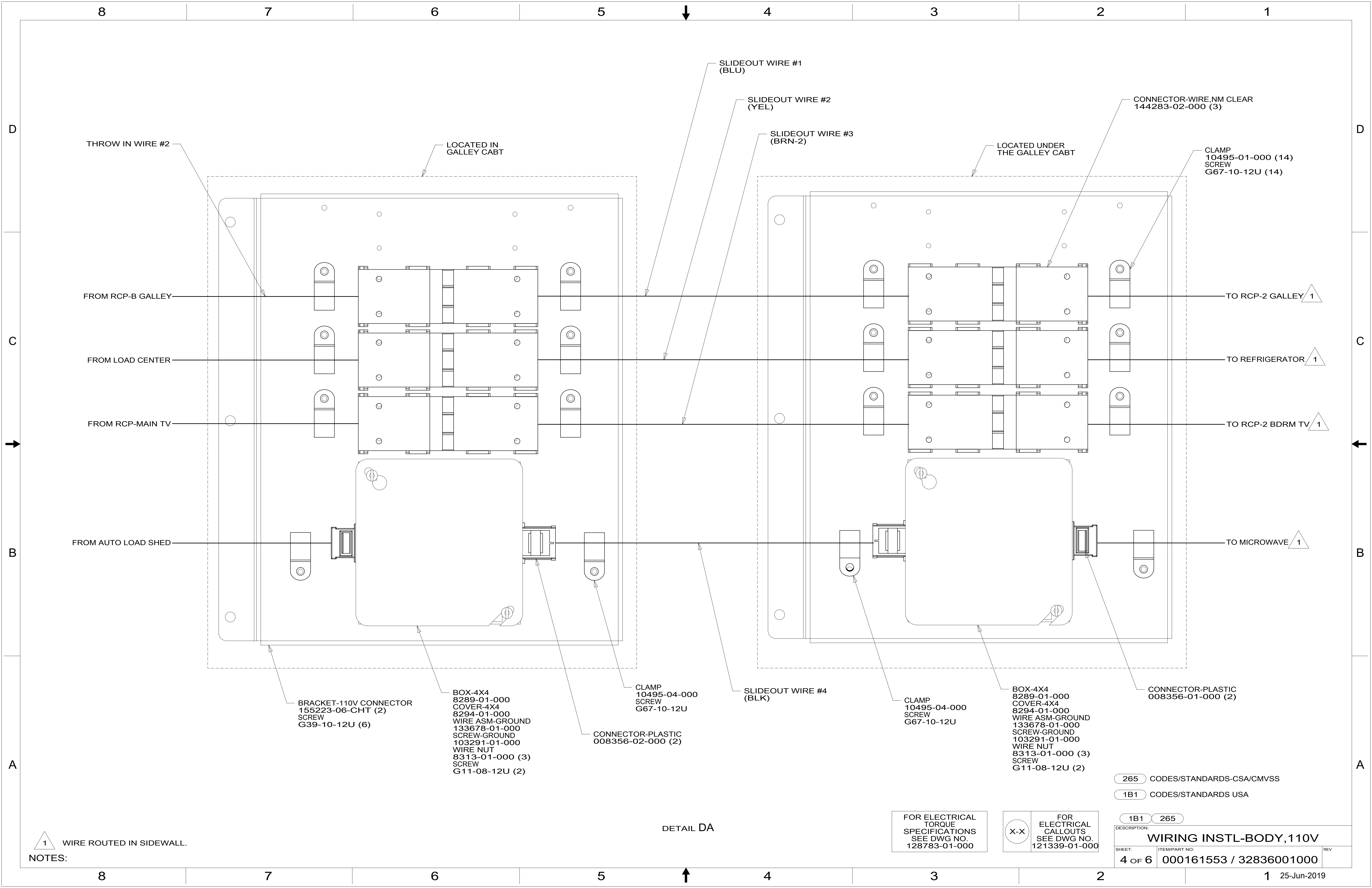
NOTES:

FOR ELECTRICAL
TORQUE
SPECIFICATIONS
SEE DWG NO.
128783-01-000

FOR
ELECTRICAL
CALLOUTS
SEE DWG NO.
121339-01-000

- 265 CODES/STANDARDS-CSA/CMVSS
- 1B1 CODES/STANDARDS USA

DESCRIPTION:	
WIRING INSTL-BODY, 110V	
SHEET:	ITEM/PART NO.:
3 OF 6	000161553 / 32836001000
REV	



THROW IN WIRE #2

LOCATED IN GALLEY CABT

SLIDEOUT WIRE #1 (BLU)

SLIDEOUT WIRE #2 (YEL)

SLIDEOUT WIRE #3 (BRN-2)

LOCATED UNDER THE GALLEY CABT

CONNECTOR-WIRE,NM CLEAR 144283-02-000 (3)

CLAMP 10495-01-000 (14)
SCREW G67-10-12U (14)

FROM RCP-B GALLEY

TO RCP-2 GALLEY 1

FROM LOAD CENTER

TO REFRIGERATOR 1

FROM RCP-MAIN TV

TO RCP-2 BDRM TV 1

FROM AUTO LOAD SHED

TO MICROWAVE 1

BRACKET-110V CONNECTOR 155223-06-CHT (2)
SCREW G39-10-12U (6)

BOX-4X4 8289-01-000
COVER-4X4 8294-01-000
WIRE ASM-GROUND 133678-01-000
SCREW-GROUND 103291-01-000
WIRE NUT 8313-01-000 (3)
SCREW G11-08-12U (2)

CONNECTOR-PLASTIC 008356-02-000 (2)

CLAMP 10495-04-000
SCREW G67-10-12U

SLIDEOUT WIRE #4 (BLK)

CLAMP 10495-04-000
SCREW G67-10-12U

BOX-4X4 8289-01-000
COVER-4X4 8294-01-000
WIRE ASM-GROUND 133678-01-000
SCREW-GROUND 103291-01-000
WIRE NUT 8313-01-000 (3)
SCREW G11-08-12U (2)

CONNECTOR-PLASTIC 008356-01-000 (2)

265 CODES/STANDARDS-CSA/CMVSS

1B1 CODES/STANDARDS USA

1B1 265

FOR ELECTRICAL TORQUE SPECIFICATIONS SEE DWG NO. 128783-01-000

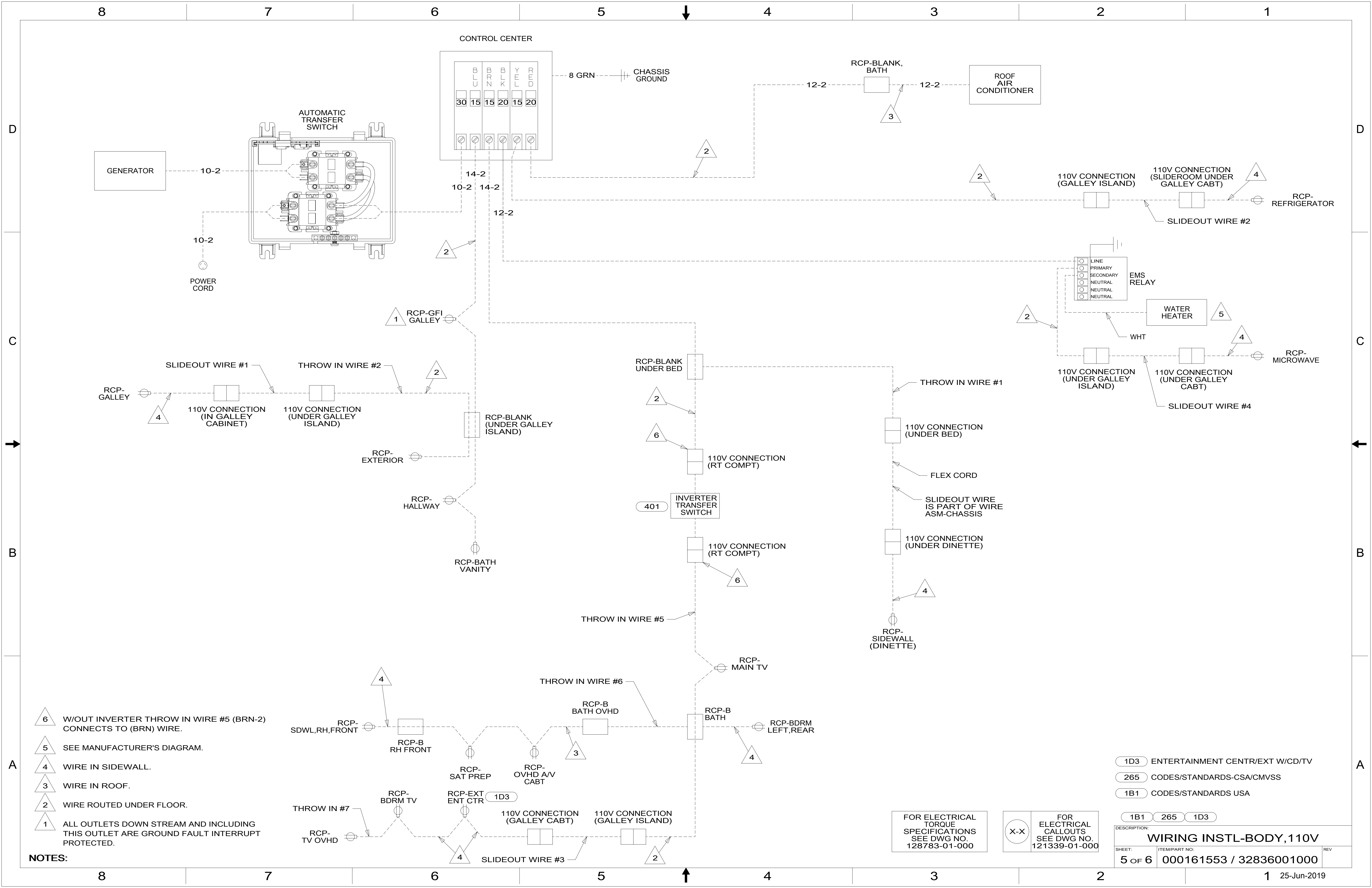
FOR ELECTRICAL CALLOUTS SEE DWG NO. 121339-01-000

DESCRIPTION: WIRING INSTL-BODY, 110V

SHEET: 4 OF 6 ITEM/PART NO.: 000161553 / 32836001000 REV:

1 WIRE ROUTED IN SIDEWALL.

DETAIL DA



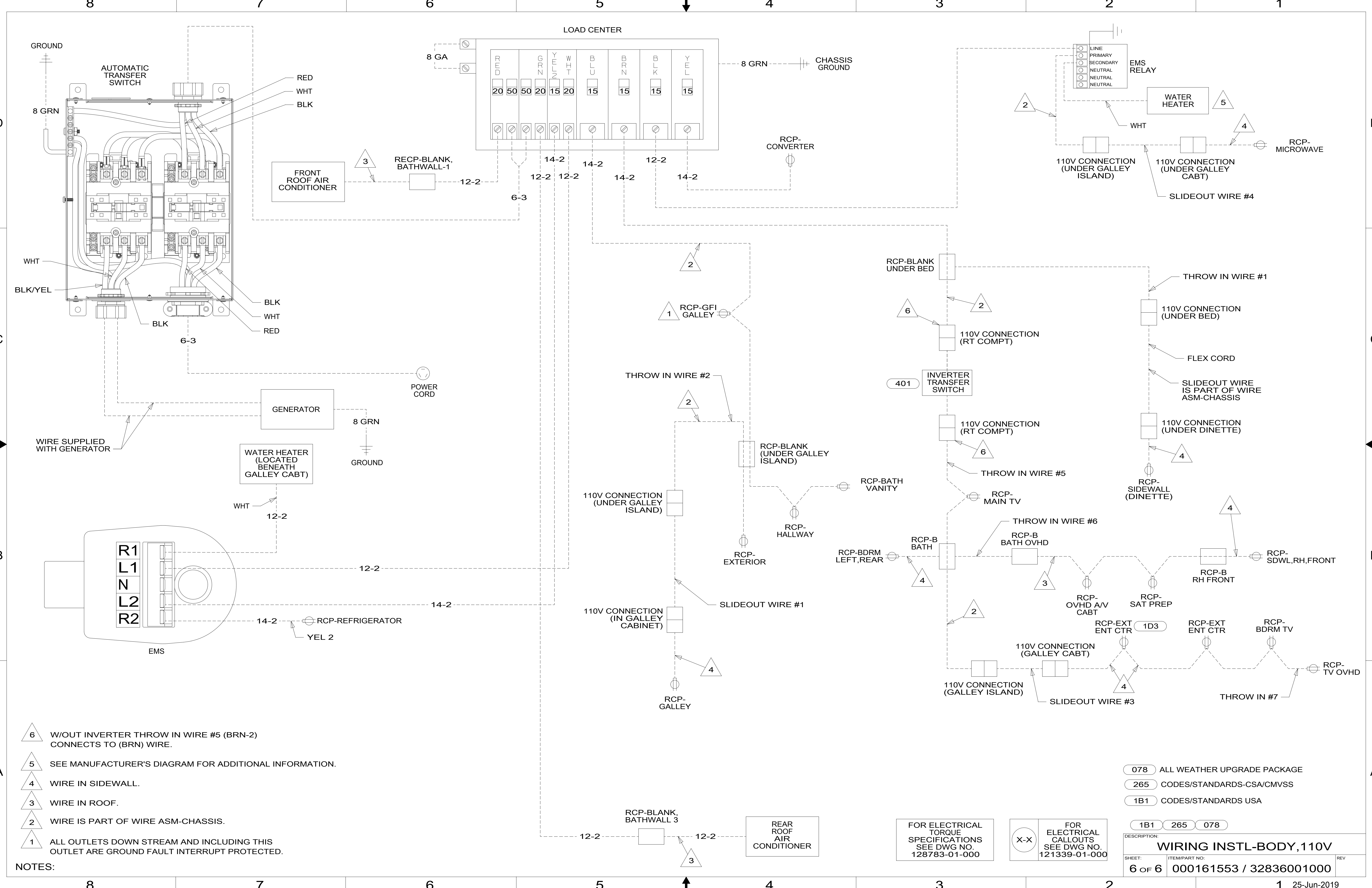
- NOTES:**
- 6 W/O INVERTER THROW IN WIRE #5 (BRN-2) CONNECTS TO (BRN) WIRE.
 - 5 SEE MANUFACTURER'S DIAGRAM.
 - 4 WIRE IN SIDEWALL.
 - 3 WIRE IN ROOF.
 - 2 WIRE ROUTED UNDER FLOOR.
 - 1 ALL OUTLETS DOWN STREAM AND INCLUDING THIS OUTLET ARE GROUND FAULT INTERRUPT PROTECTED.

- 1D3 ENTERTAINMENT CENTR/EXT W/CD/TV
- 265 CODES/STANDARDS-CSA/CMVSS
- 1B1 CODES/STANDARDS USA

FOR ELECTRICAL TORQUE SPECIFICATIONS SEE DWG NO. 128783-01-000

FOR ELECTRICAL CALLOUTS SEE DWG NO. 121339-01-000

DESCRIPTION: WIRING INSTL-BODY, 110V		
SHEET: 5 OF 6	ITEM/PART NO: 000161553 / 32836001000	REV
1 25-Jun-2019		



- NOTES:
- 6 W/OUT INVERTER THROW IN WIRE #5 (BRN-2) CONNECTS TO (BRN) WIRE.
 - 5 SEE MANUFACTURER'S DIAGRAM FOR ADDITIONAL INFORMATION.
 - 4 WIRE IN SIDEWALL.
 - 3 WIRE IN ROOF.
 - 2 WIRE IS PART OF WIRE ASM-CHASSIS.
 - 1 ALL OUTLETS DOWN STREAM AND INCLUDING THIS OUTLET ARE GROUND FAULT INTERRUPT PROTECTED.

FOR ELECTRICAL TORQUE SPECIFICATIONS SEE DWG NO. 128783-01-000

FOR ELECTRICAL CALLOUTS SEE DWG NO. 121339-01-000

- 078 ALL WEATHER UPGRADE PACKAGE
- 265 CODES/STANDARDS-CSA/CMVSS
- 1B1 CODES/STANDARDS USA

DESCRIPTION: WIRING INSTL-BODY, 110V		
SHEET: 6 OF 6	ITEM/PART NO: 000161553 / 32836001000	REV
1 25-Jun-2019		