

8

7

6

5

4

3

2

1



D

D

C

C

B

B

A

A

CABLE ASM-CHASSIS GND EXT (BLK)		133566-12-011
CABLE ASM-CHASSIS BATTERY DISCONNECT SUPPLY (RED)		141415-32-038
CABLE ASM-COACH BATTERY DISCONNECT SUPPLY (YEL)		141416-52-039
CABLE ASM-COACH BATTERY GND (BLK)		133567-12-006
CABLE ASM-CHASSIS BATTERY DISCONNECT RETURN (PUR)		141415-12-034
CABLE ASM-GENERATOR (GRN)		141415-42-107
LEVELING SYSTEM POWER CABLE (BLU)	60M	141415-29-026
LEVELING SYSTEM GND CABLE (BLK)	60M	133566-12-008
CABLE ASM-STARTER (RED)		141416-32-011
CABLE ASM-COACH BATTERY FUSE		141416-52-006
CABLE ASM-CHASSIS BATTERY FUSE		141415-32-006
CABLE ASM (ORG) FROM COACH BATTERY TO INVERTER FUSE		175207-62-004
CABLE ASM (ORG) FROM INVERTER FUSE TO INVERTER BATT DISCONNECT		175207-62-016
CABLE ASM (ORG) FROM BATTERY DISCONNECT TO POSITIVE POST ON INVERTER		175207-62-007
CABLE ASM (BLK) FROM COACH BATTERY TO INVERTER NEGATIVE TERMINAL		175211-02-018
CABLE ASM-TEMPERATURE	1	
CABLE ASM (YEL) JUMPER BETWEEN POSITIVE POSTS ON COACH BATTERY		141417-52-002 (2)
CABLE ASM (BLK) JUMPER BETWEEN NEGATIVE POSTS ON COACH BATTERY		133568-12-002 (2)
CABLE ASM-INVERTER GROUND (GRN)		136145-01-021
CABLE ASM (YEL) JUMPER BETWEEN POSITIVE POSTS ON COACH BATTERY		141417-52-004
CABLE ASM (BLK) JUMPER BETWEEN NEGATIVE POSTS ON COACH BATTERY		133568-12-004

- 60M HYDRAULIC LEVEL JACKS-AUTO
- 265 CODES/STANDARDS-CSA/CMVSS
- 1B1 CODES/STANDARDS USA

- 1B1 265

WINNEBAGO
COPYRIGHT 2016 WINNEBAGO INDUSTRIES, INC.

DSNR:		ALL DIMENSIONS ARE IN MILLIMETERS	
DIFFR:			
UNSPECIFIED TOLERANCES:	MATERIAL:		
WHOLE DIM (X) :		3	
ONE-PLACE (X.X) :		1.5	
TWO-PLACE (X.XX) :		0.50	
ANGLE :		1°	
REFER TO ES0018 FOR FASTENER TIGHTENING GUIDELINES		WEIGHT: (LBS)	FIRST USED:
			19 F36Z
BATTERY INSTL			
SHEET:	ITEM/PART NO.:	REF:	REV:
1 OF 4	000160505 / 32804501000		

FOR ELECTRICAL TORQUE SPECIFICATIONS SEE DWG NO. 128783-01-000

FOR ELECTRICAL CALLOUTS SEE DWG NO. 121339-01-000

1 CABLE ASM-TEMPERATURE IS PART OF WIRE ASM-CHASSIS.

NOTES:

8

7

6

5

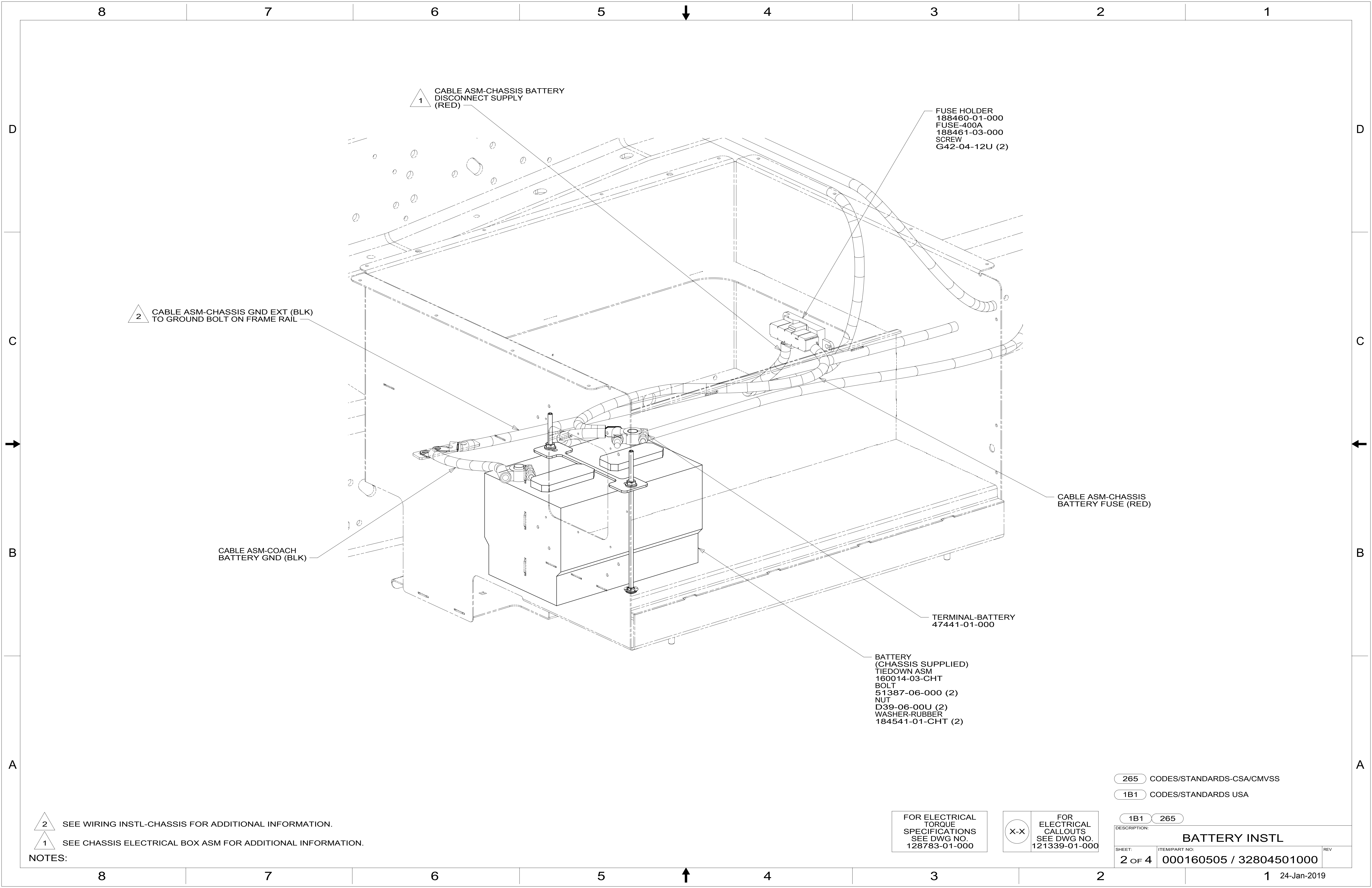
4

3

2

1





1 CABLE ASM-CHASSIS BATTERY DISCONNECT SUPPLY (RED)

FUSE HOLDER
188460-01-000
FUSE-400A
188461-03-000
SCREW
G42-04-12U (2)

2 CABLE ASM-CHASSIS GND EXT (BLK) TO GROUND BOLT ON FRAME RAIL

CABLE ASM-COACH BATTERY GND (BLK)

CABLE ASM-CHASSIS BATTERY FUSE (RED)

TERMINAL-BATTERY
47441-01-000

BATTERY
(CHASSIS SUPPLIED)
TIEDOWN ASM
160014-03-CHT
BOLT
51387-06-000 (2)
NUT
D39-06-00U (2)
WASHER-RUBBER
184541-01-CHT (2)

2 SEE WIRING INSTL-CHASSIS FOR ADDITIONAL INFORMATION.
1 SEE CHASSIS ELECTRICAL BOX ASM FOR ADDITIONAL INFORMATION.

NOTES:

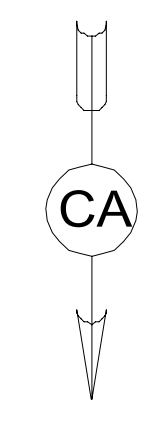
265 CODES/STANDARDS-CSA/CMVSS
1B1 CODES/STANDARDS USA

FOR ELECTRICAL TORQUE SPECIFICATIONS SEE DWG NO. 128783-01-000

X-X FOR ELECTRICAL CALLOUTS SEE DWG NO. 121339-01-000

DESCRIPTION:		1B1 265	
BATTERY INSTL			
SHEET:	ITEM/PART NO.:	REV	
2 OF 4	000160505 / 32804501000		

8 7 6 5 4 3 2 1



BATTERY-12V
063739-03-000 (4)
BOLT
51387-06-000 (6)
NUT-HEX
D39-05-00U (6)
WASHER-RUBBER
184541-01-CHT (6)
STRAP-BATTERY
TIE DOWN
138914-01-CHT (4)

CABLE ASM-COACH BATTERY
DISCONNECT SUPPLY (YEL)

TO GROUND BAR
BEHIND CHASSIS
BATTERY

CABLE ASM-
TEMPERATURE,
BATTERY

FUSE HOLDER
188460-01-000
FUSE-400A
188461-03-000
SCREW
G42-04-12U (2)

CABLE ASM-COACH
BATTERY FUSE (YEL)

CABLE ASM (BLK)
COACH BATTERY JUMPER

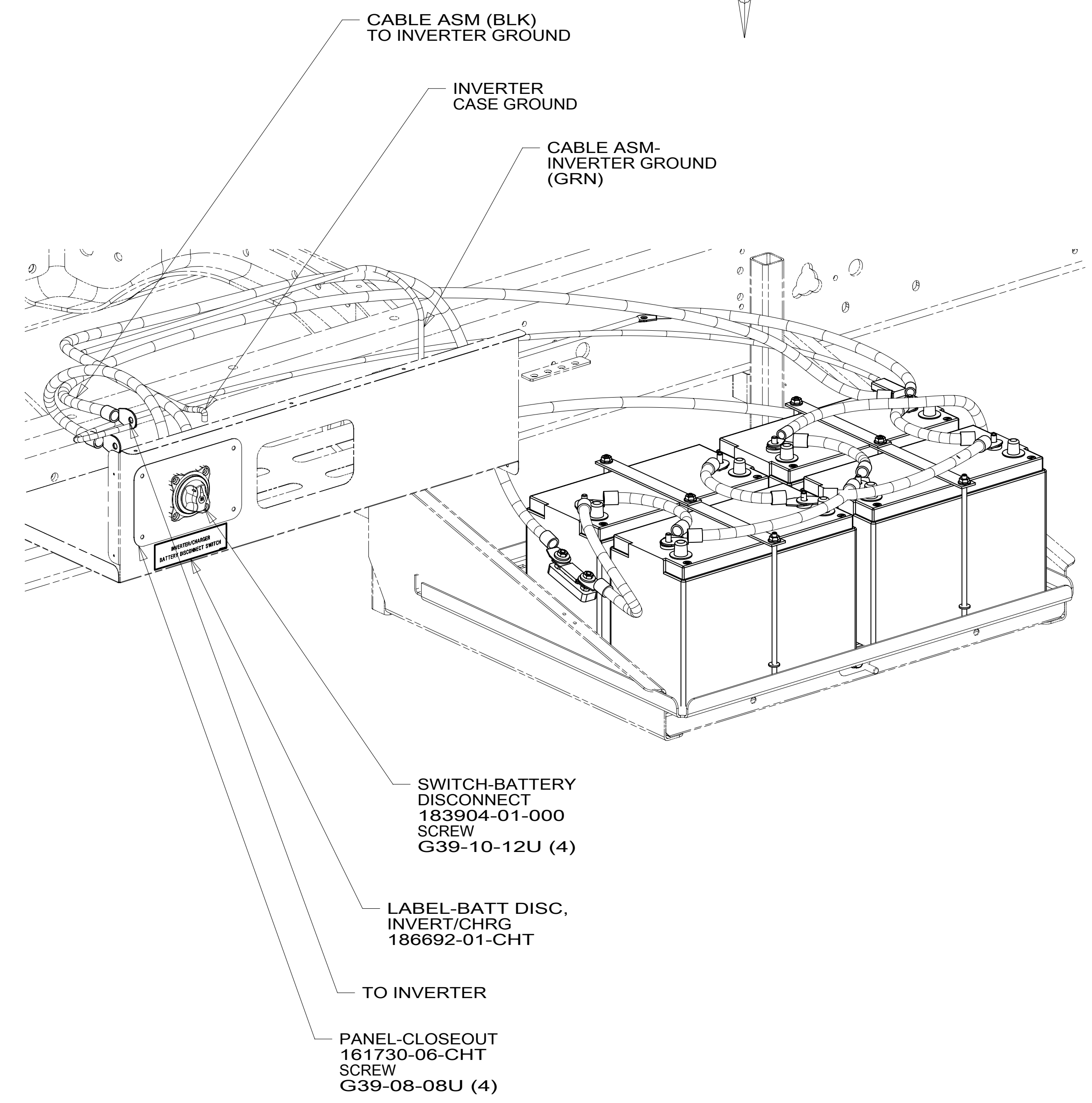
TRAY-BATTERY
176574-03-CHT
NUT
D39-06-00U
WASHER
E13-17-00U
BOLT
C26-06-12U

VIEW CA

CABLE ASM (ORG)
TO INVERTER FUSE

HOLDER-FUSE
115187-02-000
FUSE-400 AMP
115187-05-000
SCREW
G36-10-12U (2)

CABLE ASM (YEL)
COACH BATTERY JUMPER



CABLE ASM (BLK)
TO INVERTER GROUND

INVERTER
CASE GROUND

CABLE ASM-
INVERTER GROUND
(GRN)

SWITCH-BATTERY
DISCONNECT
183904-01-000
SCREW
G39-10-12U (4)

LABEL-BATT DISC,
INVERT/CHRG
186692-01-CHT

TO INVERTER

PANEL-CLOSEOUT
161730-06-CHT
SCREW
G39-08-08U (4)

265 CODES/STANDARDS-CSA/CMVSS

1B1 CODES/STANDARDS USA

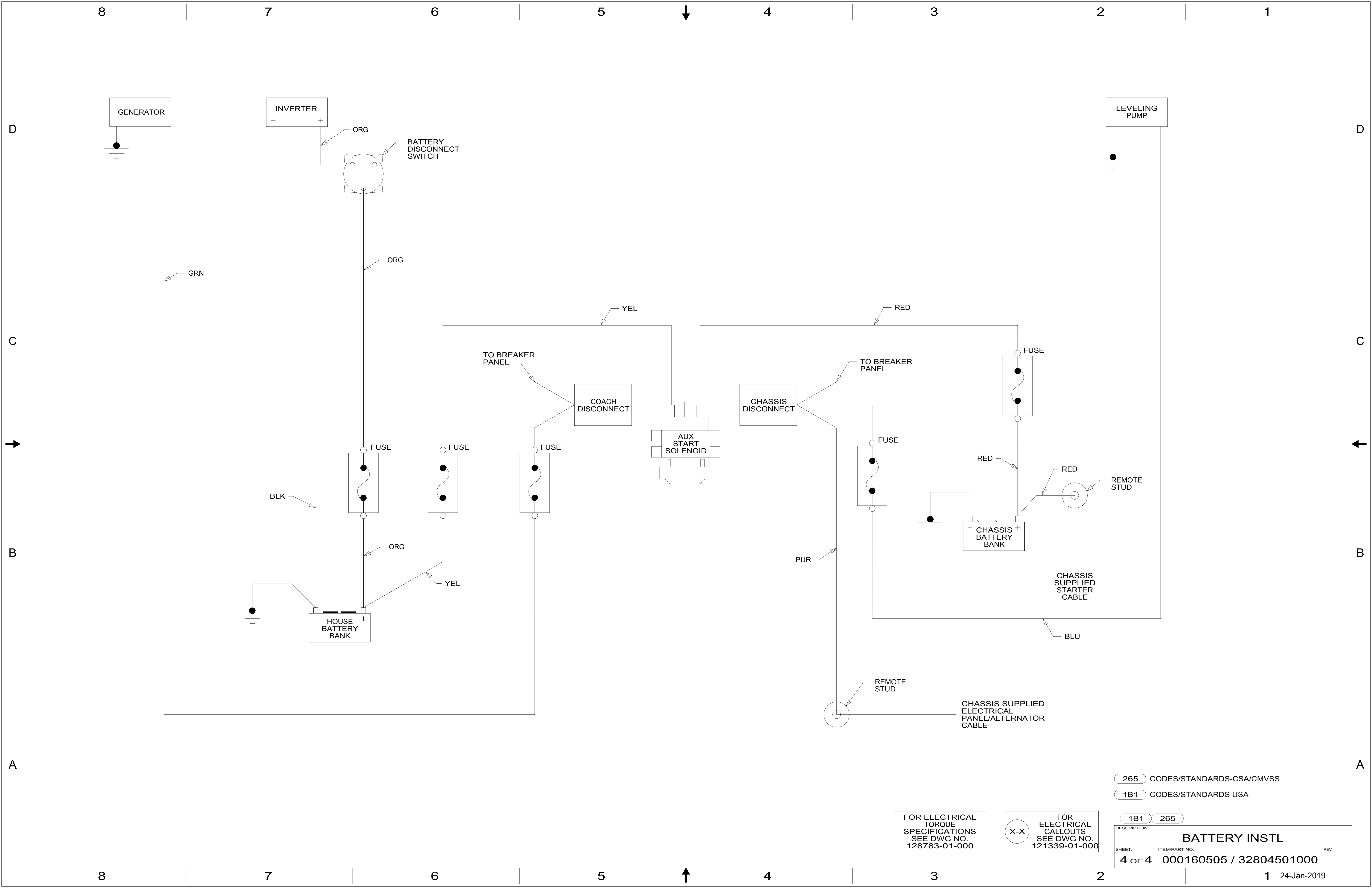
1B1 265

FOR ELECTRICAL
TORQUE
SPECIFICATIONS
SEE DWG NO.
128783-01-000

FOR
ELECTRICAL
CALLOUTS
SEE DWG NO.
121339-01-000

DESCRIPTION: BATTERY INSTL		
SHEET: 3 OF 4	ITEM/PART NO: 000160505 / 32804501000	REV
		1 24-Jan-2019

8 7 6 5 4 3 2 1



265 CODES/STANDARDS-CSA/CMVSS
 1B1 CODES/STANDARDS USA

FOR ELECTRICAL TORQUE SPECIFICATIONS SEE DWG NO. 128783-01-000

FOR ELECTRICAL CALLOUTS SEE DWG NO. 121339-01-000

DESCRIPTION: BATTERY INSTL		
SHEET: 4 OF 4	ITEM/PART NO: 000160505 / 32804501000	REV