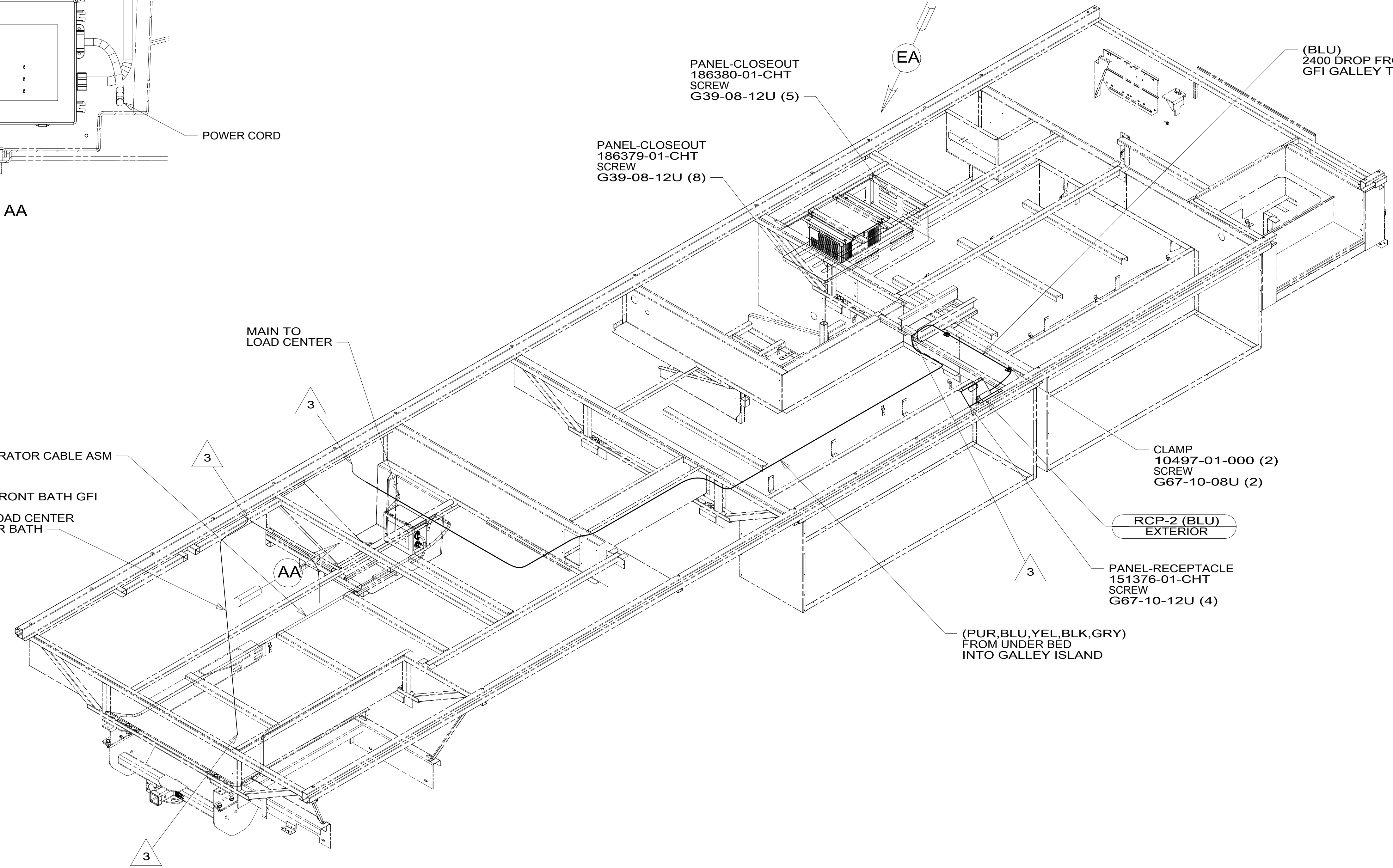


VIEW AA



GENERATOR CABLE ASM
 (BRN) FROM FRONT BATH GFI
 (WHT) FROM LOAD CENTER TO REAR BATH

PANEL-CLOSEOUT
 186380-01-CHT
 SCREW
 G39-08-12U (5)

PANEL-CLOSEOUT
 186379-01-CHT
 SCREW
 G39-08-12U (8)

(BLU)
 2400 DROP FROM
 GFI GALLEY TO EXT RCP

CLAMP
 10497-01-000 (2)
 SCREW
 G67-10-08U (2)

RCP-2 (BLU)
 EXTERIOR

PANEL-RECEPTACLE
 151376-01-CHT
 SCREW
 G67-10-12U (4)

(PUR,BLU,YEL,BLK,GRY)
 FROM UNDER BED
 INTO GALLEY ISLAND

MAIN TO
 LOAD CENTER

4 BRING EXCESS WIRE INTO COMPARTMENT TO PREVENT INTERFERENCE WITH CHASSIS COMPONENTS.

3 WIRE ROUTED THROUGH FLOOR IN THIS AREA.

2. WIRES ROUTED UNDER FLOOR.

1. AT MINIMUM ALL WIRES TO BE SUPPORTED AND SECURED PER CODE REQUIREMENTS. USE CLAMP 10495 OR 10497 OR WIRE TIE 8343 OR 108046 AND SCREW G67-XX-XXX OR G56-XX-XXX AS APPROPRIATE FOR INSTALLATION.

NOTES:

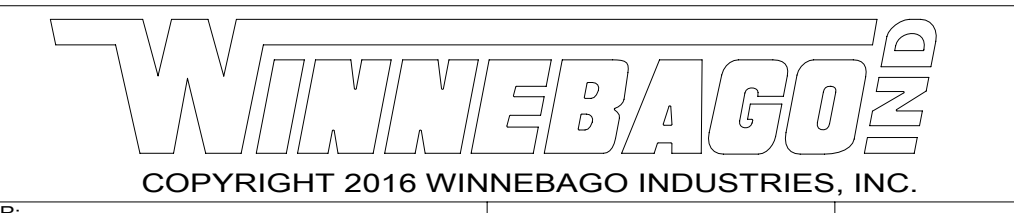
FOR ELECTRICAL TORQUE SPECIFICATIONS SEE DWG NO. 128783-01-000

FOR ELECTRICAL CALLOUTS SEE DWG NO. 121339-01-000

265 CODES/STANDARDS-CSA/CMVSS

1B1 CODES/STANDARDS USA

1B1 265



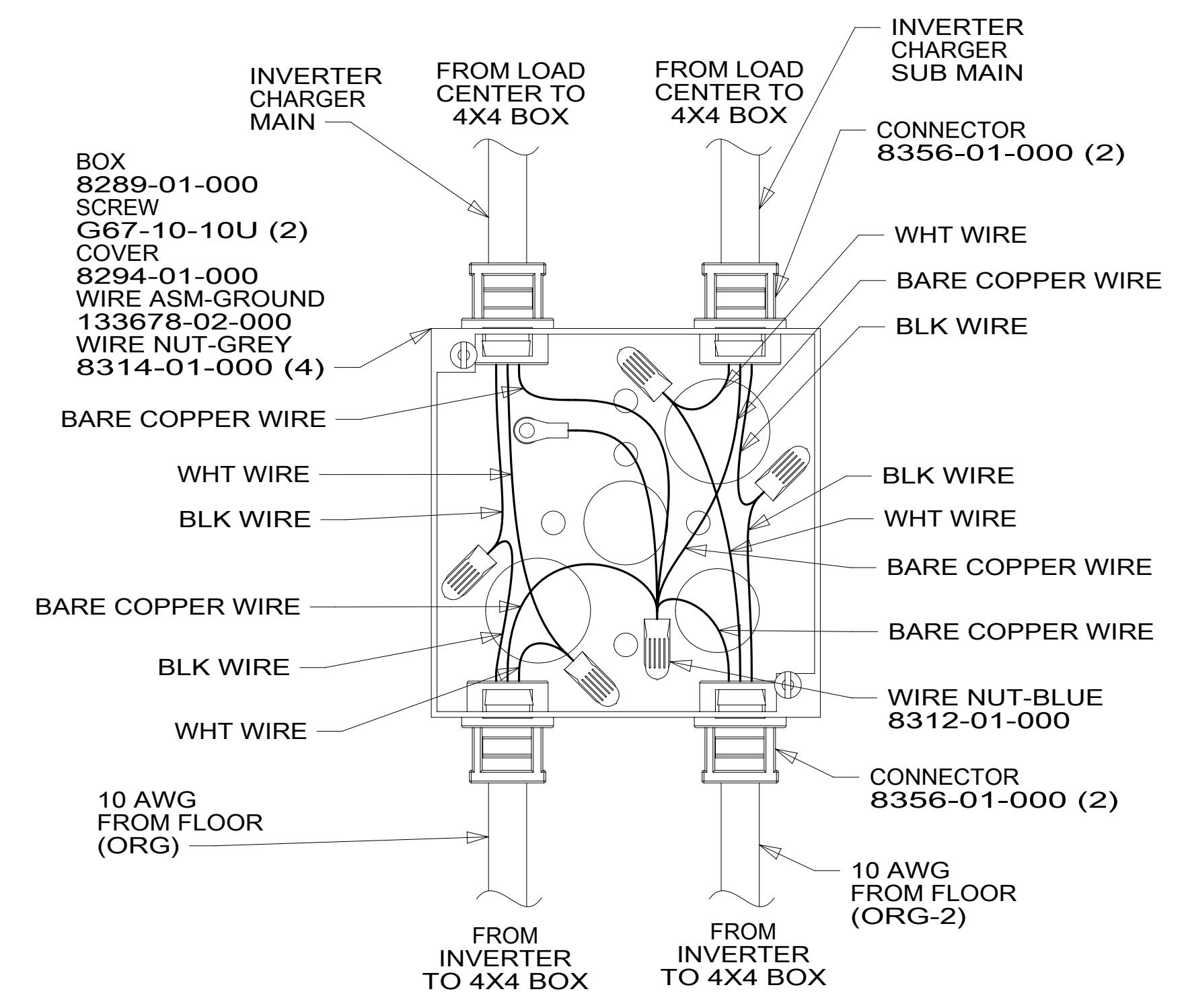
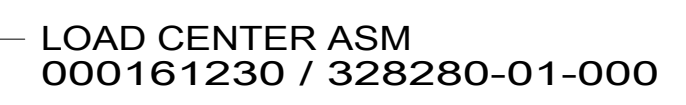
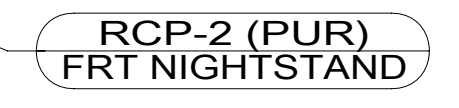
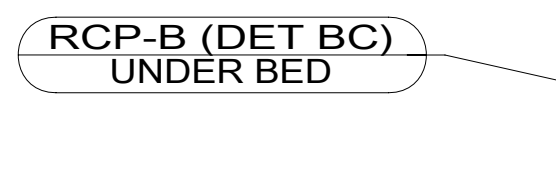
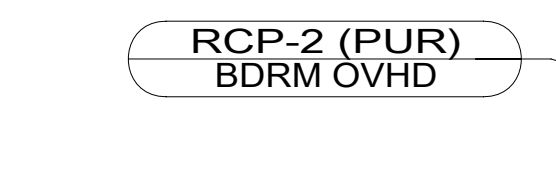
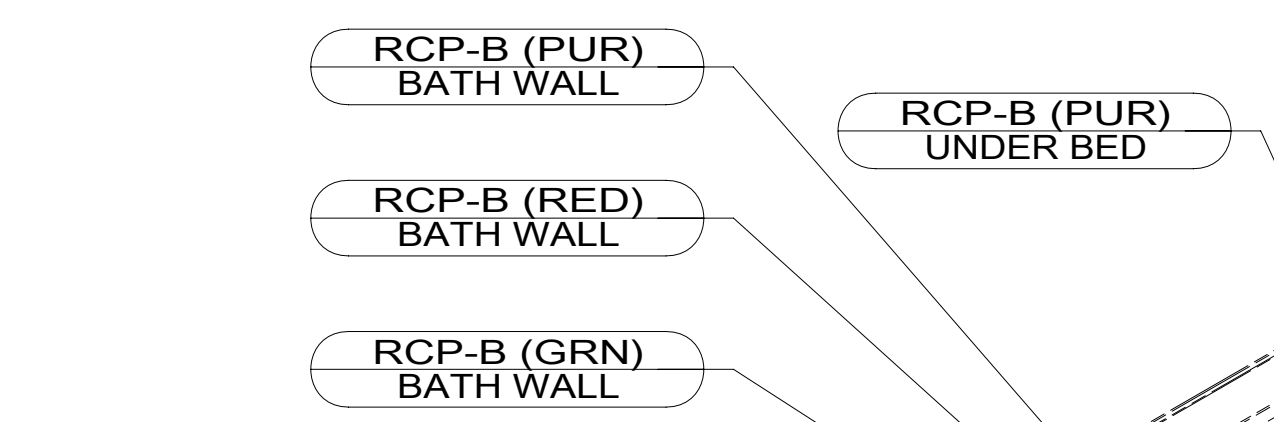
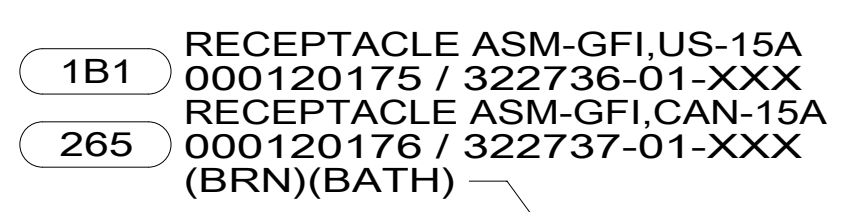
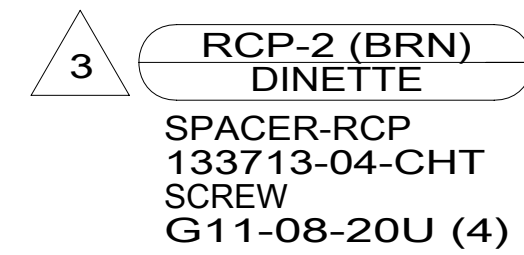
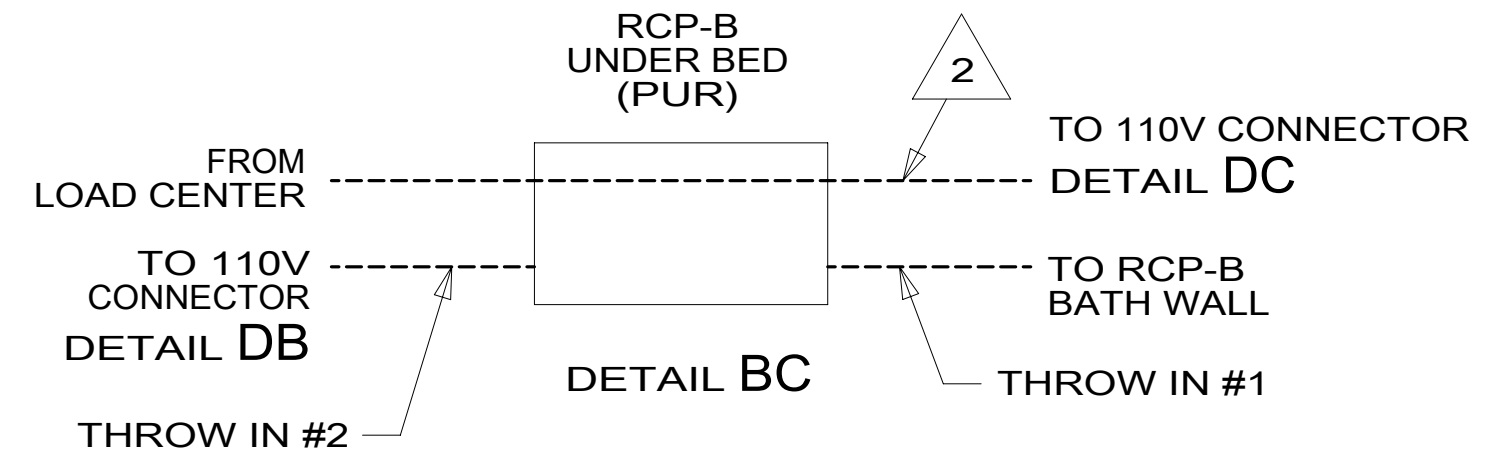
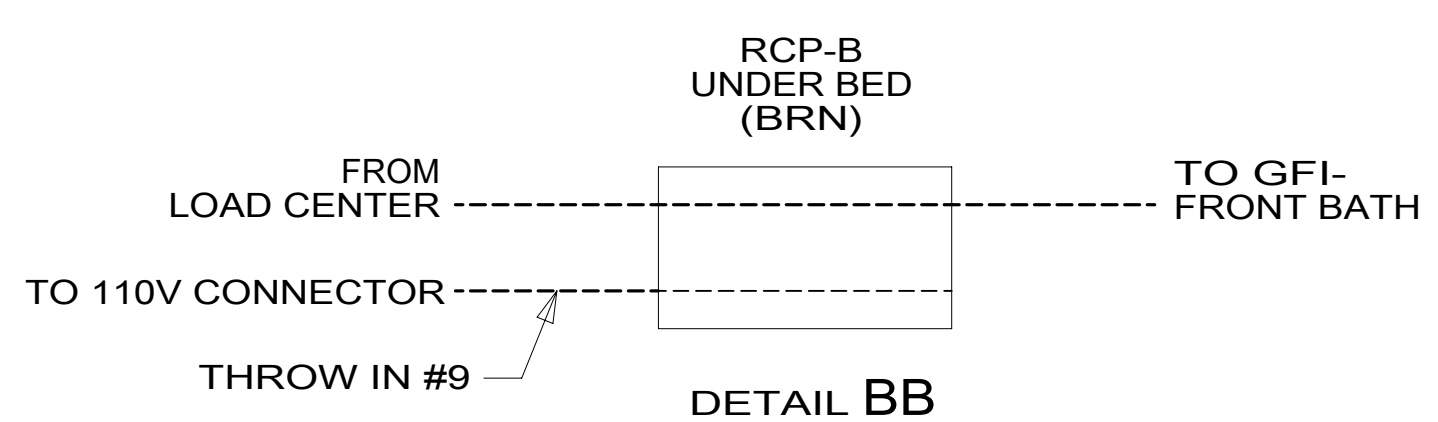
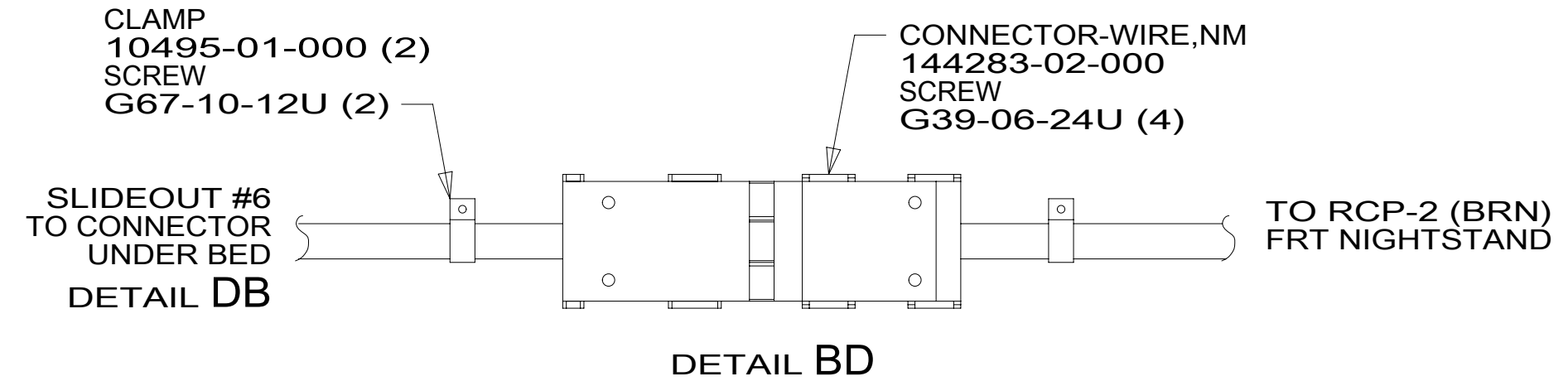
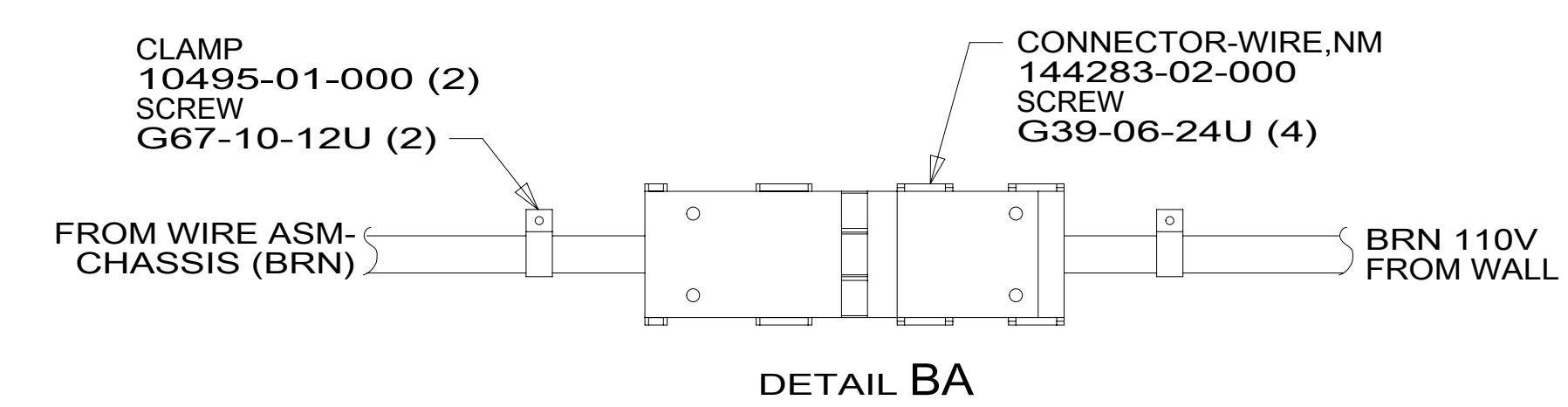
DSNR:		ALL DIMENSIONS ARE IN MILLIMETERS	
DFFR:			
UNSPECIFIED TOLERANCES:		MATERIAL:	
WHOLE DIM (X)	: 3		
ONE-PLACE (X.X)	: 1.5		
TWO-PLACE (X.XX)	: 0.50		
ANGLE	: 1°		

REFER TO ES0018 FOR FASTENER TIGHTENING GUIDELINES

WEIGHT: (LBS) FIRST USED: 19 F36Z

DESCRIPTION: WIRING INSTL-BODY, 110V

SHEET: 1 OF 8 ITEM/PART NO: 000160437 / 32803401000 REV:



- 3 WIRE ROUTED IN SIDEWALL.
- 2 WIRE ROUTED UNDER FLOOR.

1. AT MINIMUM ALL WIRES TO BE SUPPORTED AND SECURED PER CODE REQUIREMENTS. USE CLAMP 10495 OR 10497 OR WIRE TIE 8343 OR 108046 AND SCREW G67-XX-XXX OR G56-XX-XXX AS APPROPRIATE FOR INSTALLATION.

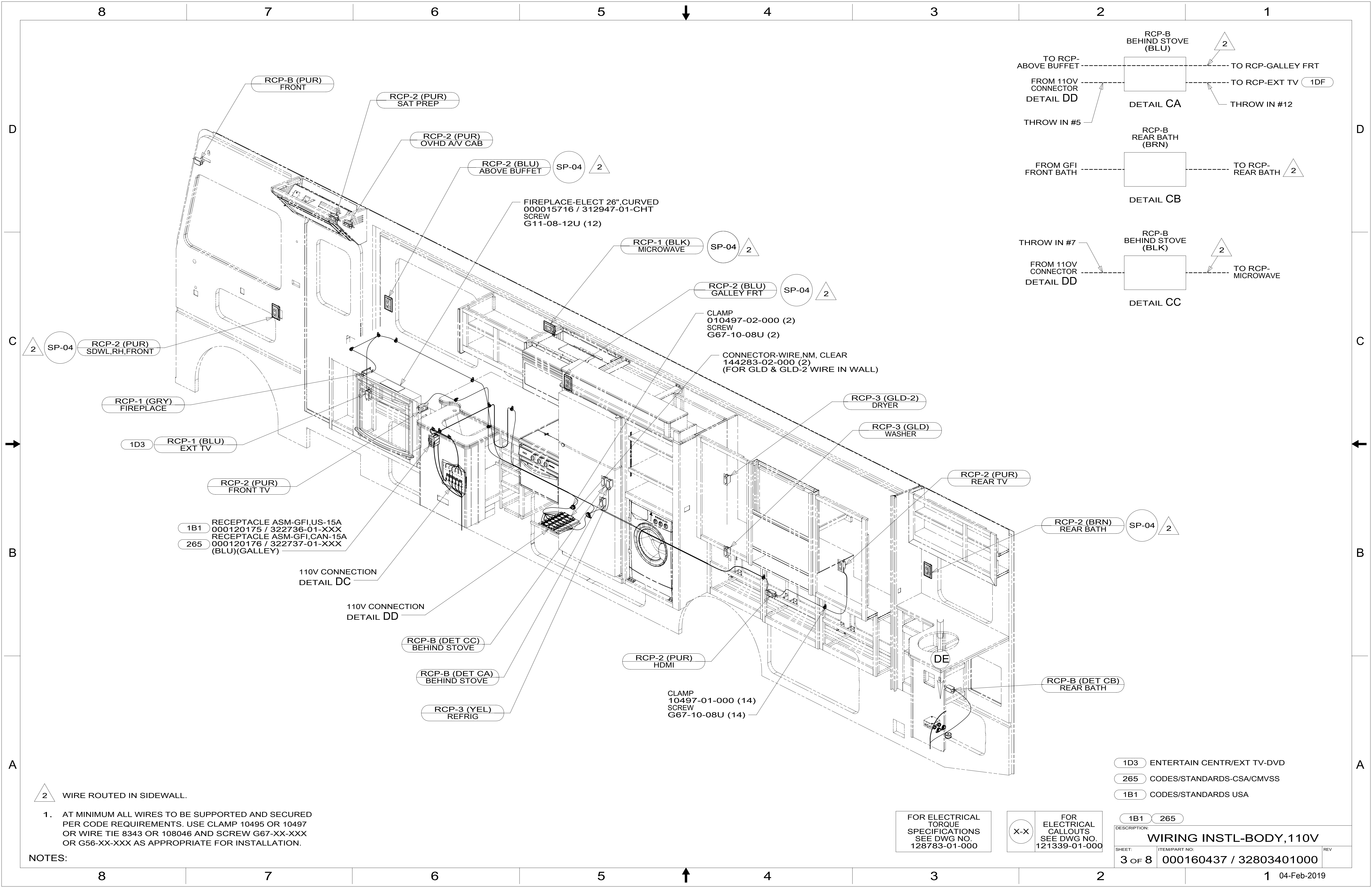
NOTES:

FOR ELECTRICAL
TORQUE
SPECIFICATIONS
SEE DWG NO.
128783-01-000

X-X
FOR ELECTRICAL
CALLOUTS
SEE DWG NO.
121339-01-000

- 265 CODES/STANDARDS-CSA/CMVSS
- 1B1 CODES/STANDARDS USA

DESCRIPTION: WIRING INSTL-BODY, 110V	
SHEET: 2 OF 8	ITEM/PART NO.: 000160437 / 32803401000
REV 04-Feb-2019	



2 WIRE ROUTED IN SIDEWALL.

1. AT MINIMUM ALL WIRES TO BE SUPPORTED AND SECURED PER CODE REQUIREMENTS. USE CLAMP 10495 OR 10497 OR WIRE TIE 8343 OR 108046 AND SCREW G67-XX-XXX OR G56-XX-XXX AS APPROPRIATE FOR INSTALLATION.

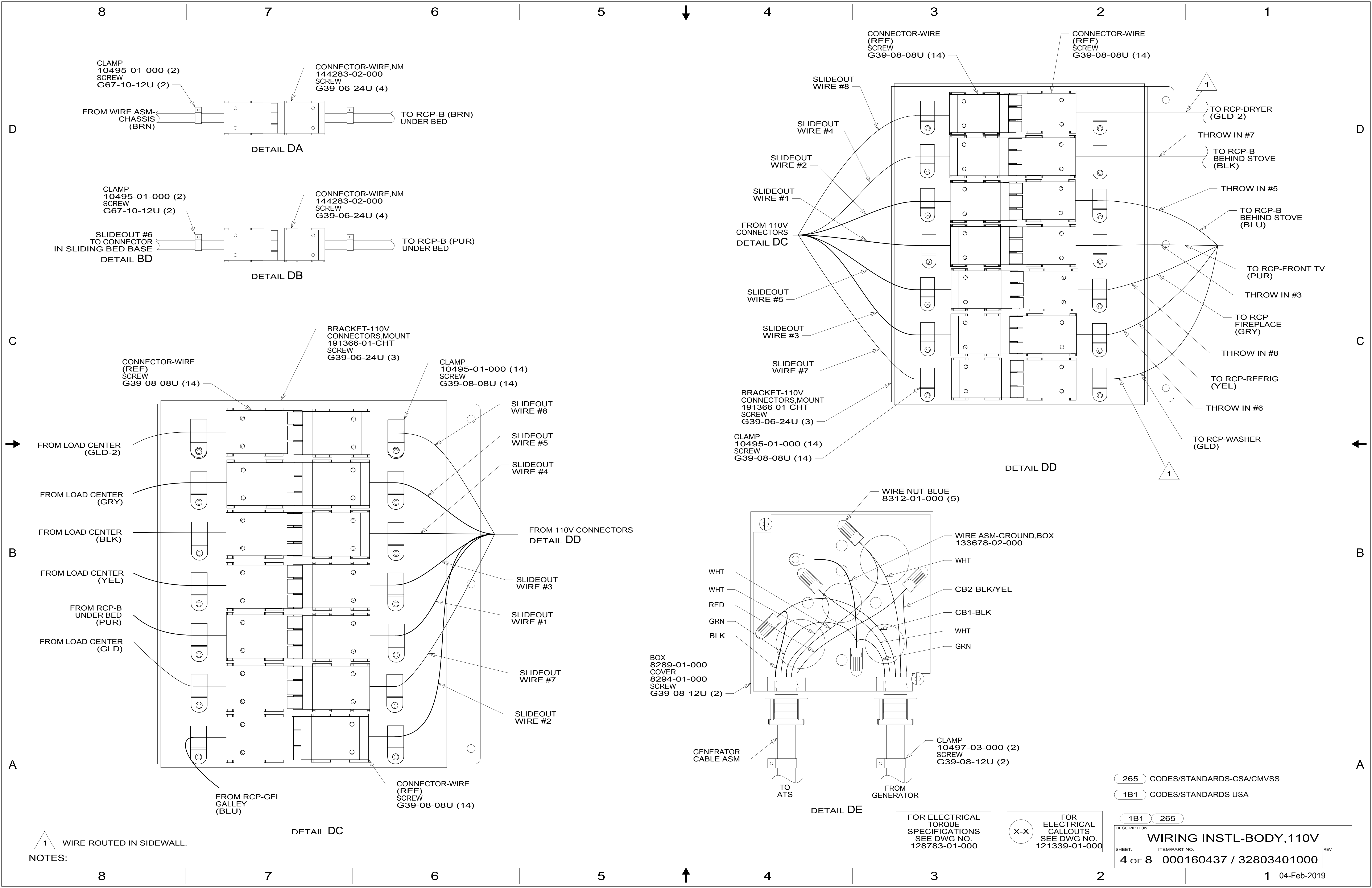
NOTES:

FOR ELECTRICAL TORQUE SPECIFICATIONS SEE DWG NO. 128783-01-000

X-X FOR ELECTRICAL CALLOUTS SEE DWG NO. 121339-01-000

- 1D3 ENTERTAIN CENTR/EXT TV-DVD
- 265 CODES/STANDARDS-CSA/CMVSS
- 1B1 CODES/STANDARDS USA

DESCRIPTION:		1B1 265	
WIRING INSTL-BODY, 110V			
SHEET:	ITEM/PART NO.:	REV	
3 OF 8	000160437 / 32803401000		



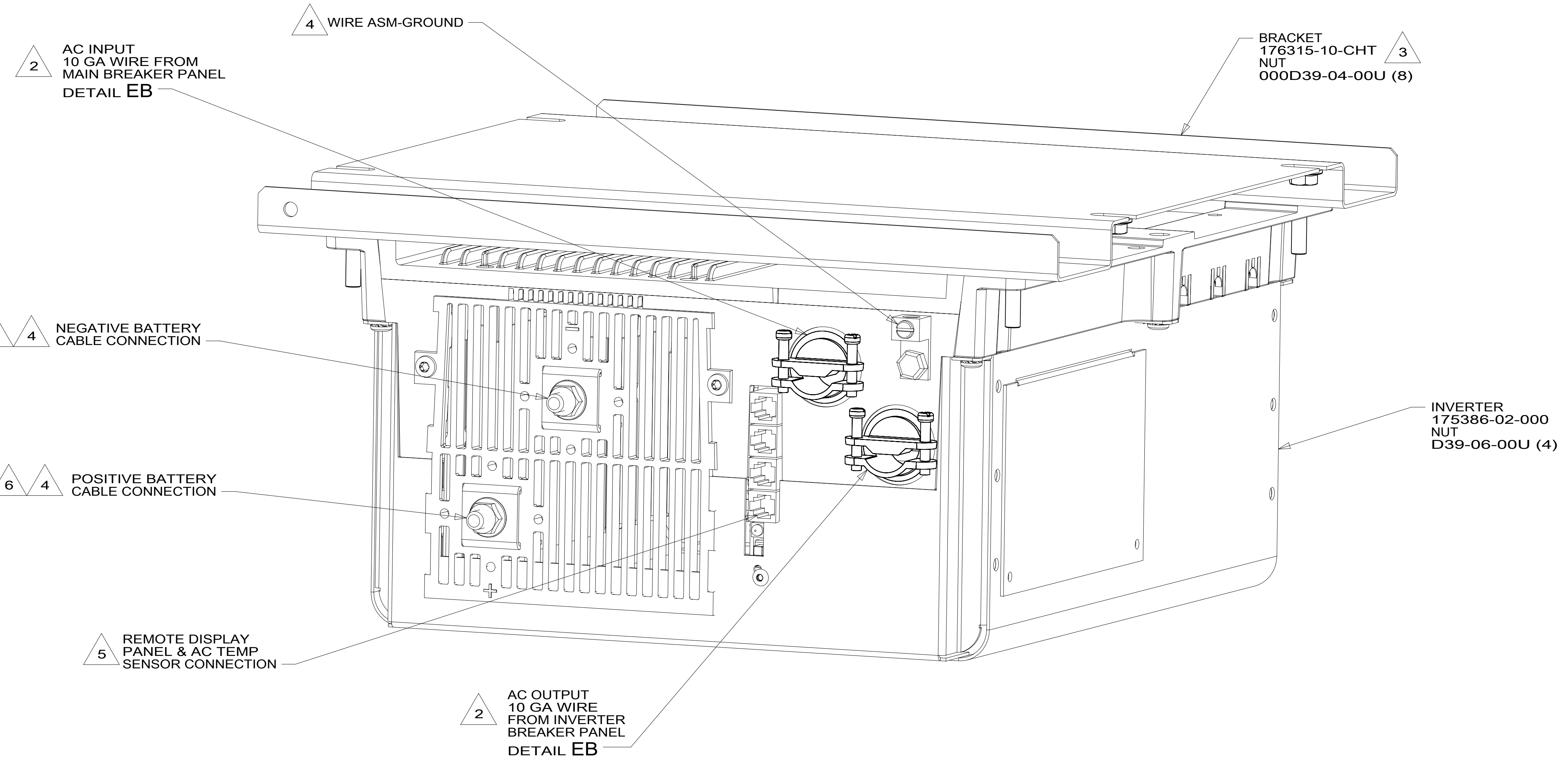
1 WIRE ROUTED IN SIDEWALL.

FOR ELECTRICAL TORQUE SPECIFICATIONS SEE DWG NO. 128783-01-000

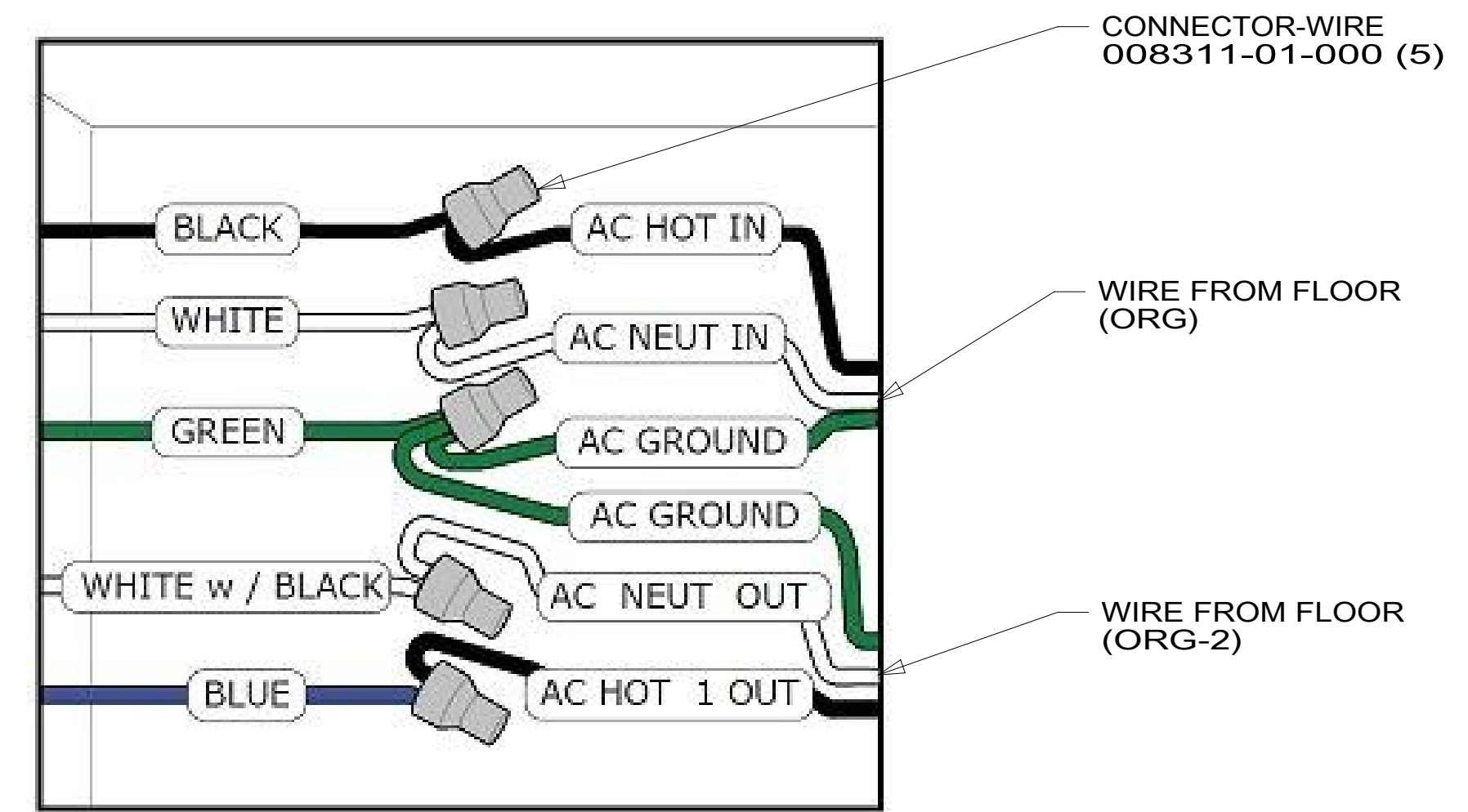
X-X FOR ELECTRICAL CALLOUTS SEE DWG NO. 121339-01-000

- 265 CODES/STANDARDS-CSA/CMVSS
- 1B1 CODES/STANDARDS USA

DESCRIPTION:	
1B1 265	
WIRING INSTL-BODY, 110V	
SHEET:	ITEM/PART NO. REV
4 OF 8	000160437 / 32803401000



DETAIL EA



DETAIL EB

- 6 DO NOT USE POWER/AIR TOOL IN INSTALL NUT. TORQUE TO 10-12 FT LBS.
- 5 CABLES PART OF WIR ASM-CHASSIS.
- 4 SEE BATTERY INSTL FOR ADDITIONAL INFORMATION.
- 3 BRACKET IS LOCATED BY HOLES ON BRACKET.
- 2 SEE LOAD CENTER/ATS ASM FOR ADDITIONAL INFORMATION.

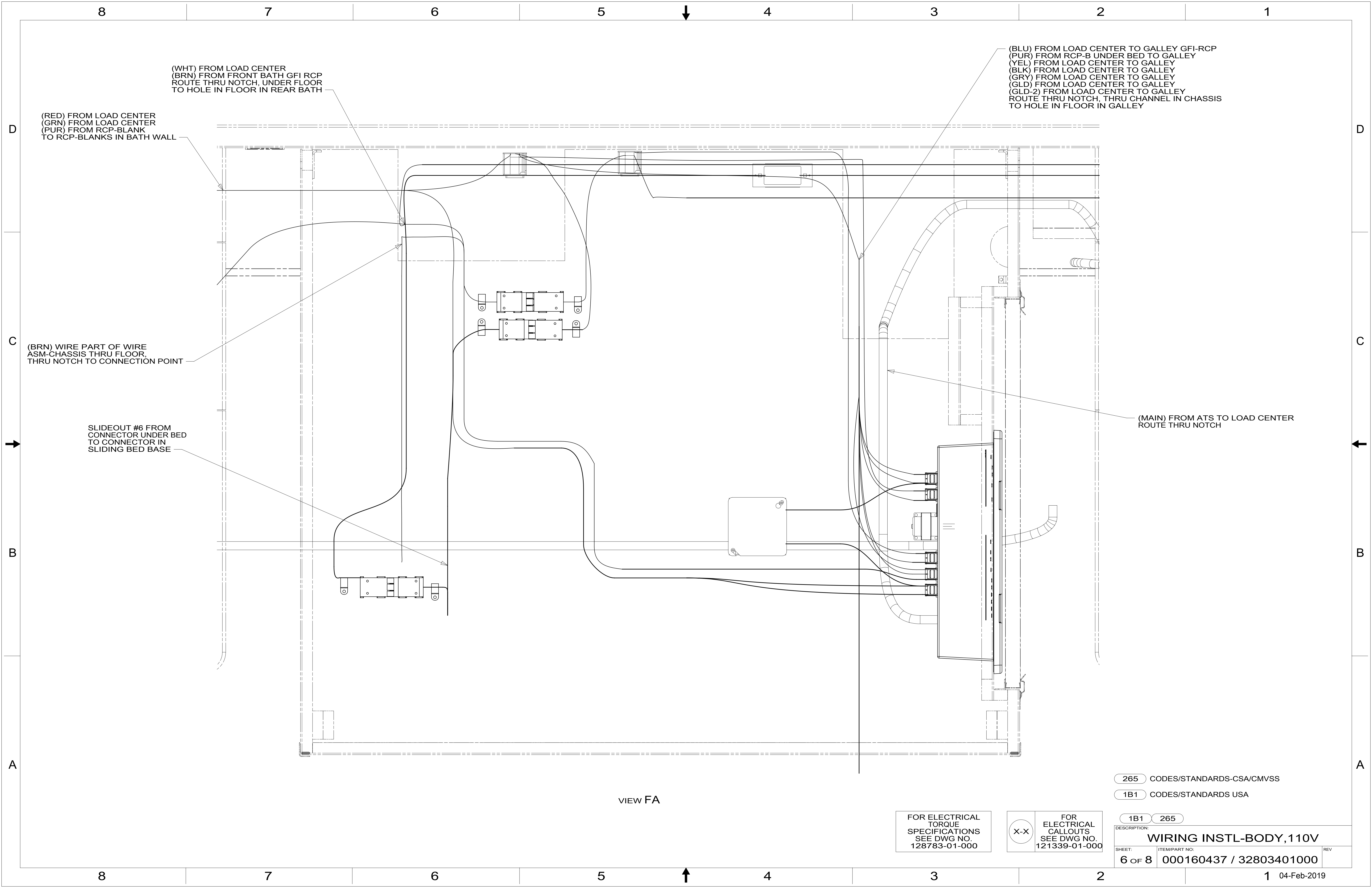
NOTES:
1. SEE INVERTER/CHARGER OWNER'S MANUAL FOR ADDITIONAL INFORMATION.

265 CODES/STANDARDS-CSA/CMVSS
1B1 CODES/STANDARDS USA

FOR ELECTRICAL
TORQUE
SPECIFICATIONS
SEE DWG NO.
128783-01-000

X-X
FOR ELECTRICAL
CALLOUTS
SEE DWG NO.
121339-01-000

DESCRIPTION: WIRING INSTL-BODY, 110V	
SHEET: 5 OF 8	ITEM/PART NO: 000160437 / 32803401000
REV 1 04-Feb-2019	



(WHT) FROM LOAD CENTER
 (BRN) FROM FRONT BATH GFI RCP
 ROUTE THRU NOTCH, UNDER FLOOR
 TO HOLE IN FLOOR IN REAR BATH

(RED) FROM LOAD CENTER
 (GRN) FROM LOAD CENTER
 (PUR) FROM RCP-BLANK
 TO RCP-BLANKS IN BATH WALL

(BRN) WIRE PART OF WIRE
 ASM-CHASSIS THRU FLOOR,
 THRU NOTCH TO CONNECTION POINT

SLIDEOUT #6 FROM
 CONNECTOR UNDER BED
 TO CONNECTOR IN
 SLIDING BED BASE

(BLU) FROM LOAD CENTER TO GALLEY GFI-RCP
 (PUR) FROM RCP-B UNDER BED TO GALLEY
 (YEL) FROM LOAD CENTER TO GALLEY
 (BLK) FROM LOAD CENTER TO GALLEY
 (GRY) FROM LOAD CENTER TO GALLEY
 (GLD) FROM LOAD CENTER TO GALLEY
 (GLD-2) FROM LOAD CENTER TO GALLEY
 ROUTE THRU NOTCH, THRU CHANNEL IN CHASSIS
 TO HOLE IN FLOOR IN GALLEY

(MAIN) FROM ATS TO LOAD CENTER
 ROUTE THRU NOTCH

VIEW FA

FOR ELECTRICAL
 TORQUE
 SPECIFICATIONS
 SEE DWG NO.
 128783-01-000

X-X
 FOR
 ELECTRICAL
 CALLOUTS
 SEE DWG NO.
 121339-01-000

265 CODES/STANDARDS-CSA/CMVSS

1B1 CODES/STANDARDS USA

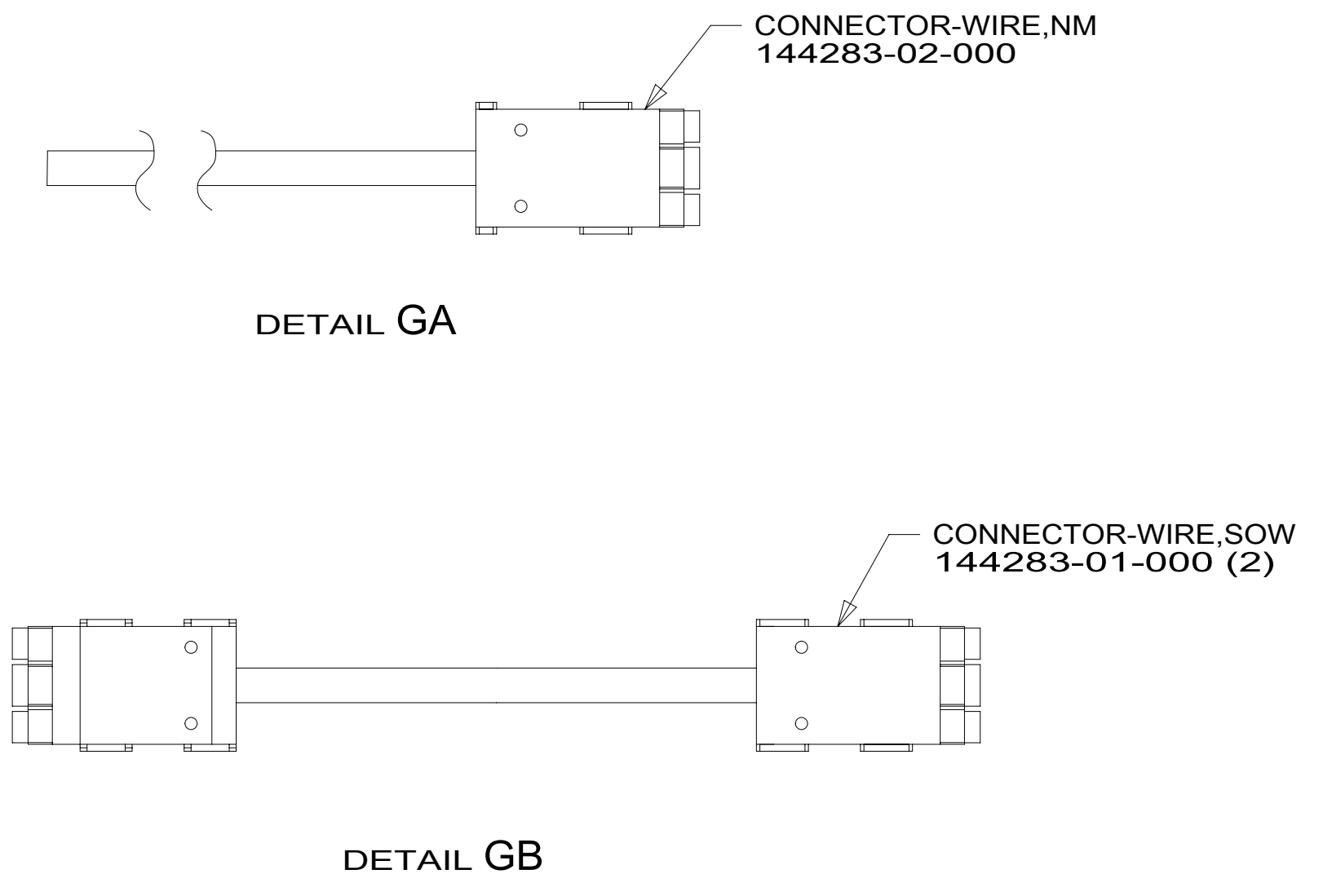
1B1 265

DESCRIPTION:
WIRING INSTL-BODY, 110V

SHEET: 6 OF 8 ITEM/PART NO: 000160437 / 32803401000 REV

RED	1B1	136135-07-060	2
	265	136136-07-060	
YEL	1B1	136131-05-075	2
	265	136134-05-075	
BLK	1B1	136131-06-075	2
	265	136134-06-075	
BRN	1B1	136131-03-120	2
	265	136134-03-120	
BLU	1B1	136131-02-087	2
	265	136134-02-087	
GRN	1B1	136135-08-060	2
	265	136136-08-060	
PUR	1B1	136131-04-093	2
	265	136134-04-093	
WHT	1B1	136135-09-054	2
	265	136136-09-054	
MAIN	1B1	176841-01-032	2
	265	176841-01-032	
GROUND MAIN		136145-01-037	
GROUND ATS		136145-01-017	
GRY	1B1	136131-15-077	2
	265	136134-15-077	
GLD	1B1	136131-10-077	2
	265	136134-10-077	
INVERTER CHARGER MAIN	1B1	136137-01-012	2
	265	136138-01-012	
INVERTER CHARGER SUB MAIN	1B1	136137-01-012	2
	265	139138-01-012	
GLD-2	1B1	136131-20-077	2
	265	136134-20-077	
GENERATOR CABLE ASM		174762-01-054	

SLIDEOUT WIRE #1		136151-04-050	3
SLIDEOUT WIRE #2		136151-02-050	3
SLIDEOUT WIRE #3		136151-05-050	3
SLIDEOUT WIRE #4		136151-06-050	3
SLIDEOUT WIRE #5		136151-15-050	3
SLIDEOUT WIRE #6		136151-04-012	3
SLIDEOUT WIRE #7		136151-10-050	3
SLIDEOUT WIRE #8		136151-20-050	3
THROW IN WIRE #1	1B1	136131-04-047	2
	265	136134-04-047	2
THROW IN WIRE #2	1B1	136131-02-046	1D3
	265	136134-02-046	1D3
THROW IN WIRE #3	1B1	136131-04-111	2
	265	136134-04-111	2
THROW IN WIRE #4	1B1	136131-02-025	2
	265	136134-02-025	2
THROW IN WIRE #5	1B1	136131-02-013	2
	265	136134-02-013	2
THROW IN WIRE #6	1B1	136131-05-011	2
	265	136134-05-011	2
THROW IN WIRE #7	1B1	136131-06-013	2
	265	136134-06-013	2
THROW IN WIRE #8	1B1	136131-15-051	2
	265	136134-15-051	2
THROW IN WIRE #9	1B1	136131-03-007	2
	265	136134-03-007	2
THROW IN WIRE #10	1B1	136131-04-037	2
	265	136134-04-037	2



3 SEE DETAIL GB FOR CONNECTOR INSTALLATION.
2 SEE DETAIL GA FOR CONNECTOR INSTALLATION.

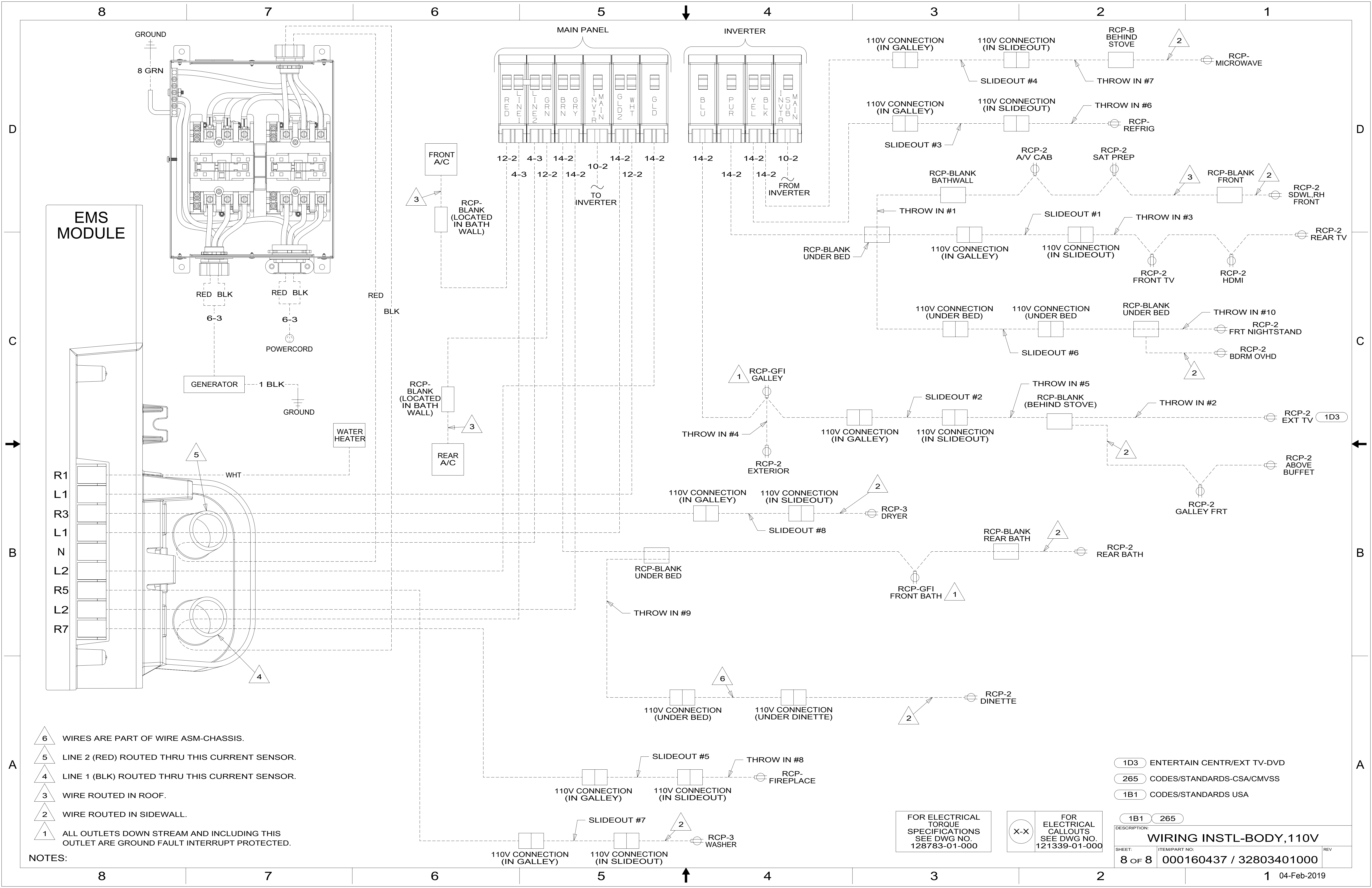
NOTES:
1. ALL GROUNDS WIRES TO BE COVERED WITH TUBING 8041-02-000.

FOR ELECTRICAL TORQUE SPECIFICATIONS SEE DWG NO. 128783-01-000

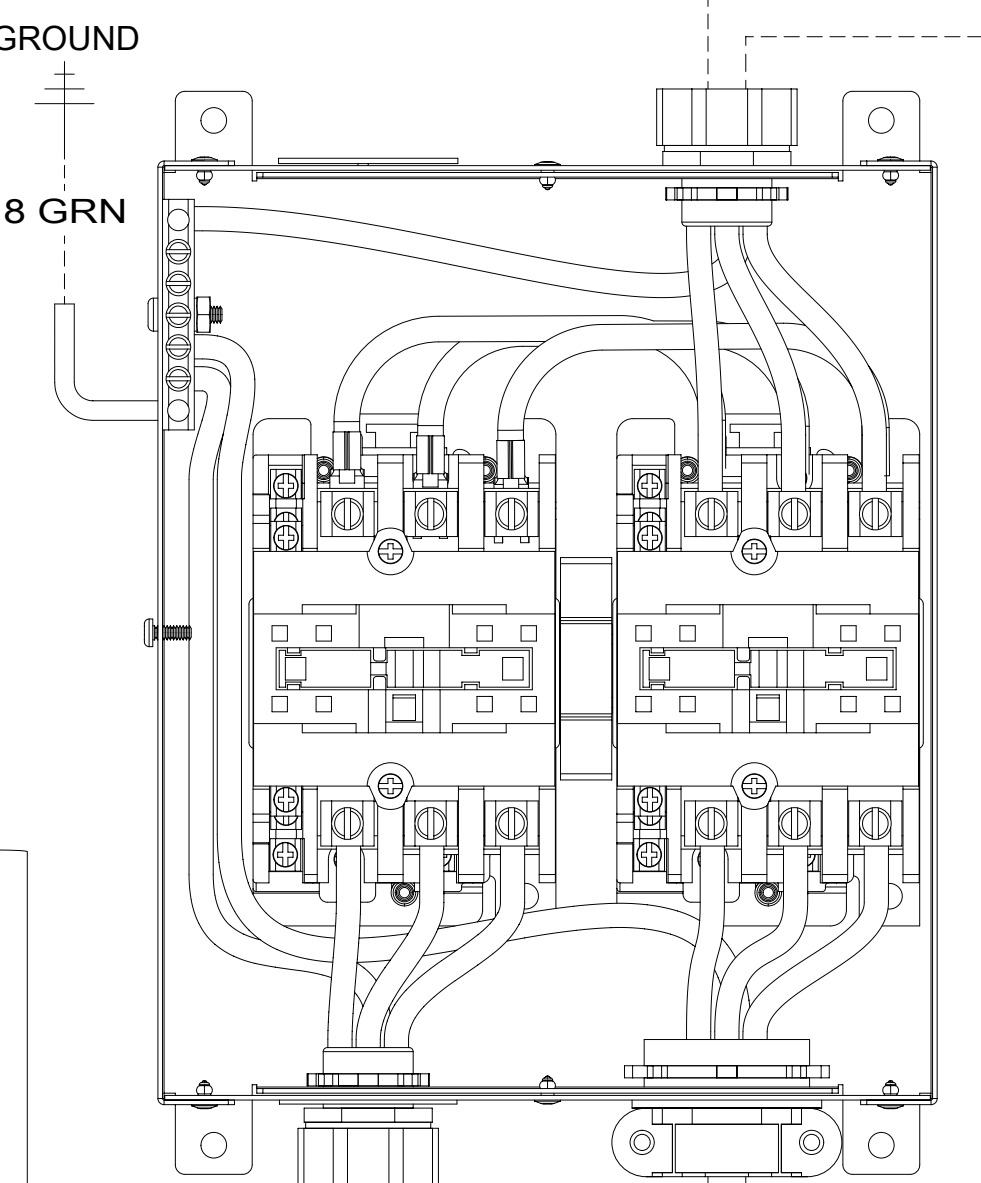
FOR ELECTRICAL CALLOUTS SEE DWG NO. 121339-01-000

- 1D3 ENTERTAIN CENTR/EXT TV-DVD
- 265 CODES/STANDARDS-CSA/CMVSS
- 1B1 CODES/STANDARDS USA

DESCRIPTION:	1B1 265	
WIRING INSTL-BODY, 110V		
SHEET:	ITEM/PART NO:	REV
7 OF 8	000160437 / 32803401000	



EMS MODULE



- R1
- L1
- R3
- L1
- N
- L2
- R5
- L2
- R7

- NOTES:**
- 6 WIRES ARE PART OF WIRE ASM-CHASSIS.
 - 5 LINE 2 (RED) ROUTED THRU THIS CURRENT SENSOR.
 - 4 LINE 1 (BLK) ROUTED THRU THIS CURRENT SENSOR.
 - 3 WIRE ROUTED IN ROOF.
 - 2 WIRE ROUTED IN SIDEWALL.
 - 1 ALL OUTLETS DOWN STREAM AND INCLUDING THIS OUTLET ARE GROUND FAULT INTERRUPT PROTECTED.

- 1D3 ENTERTAIN CENTR/EXT TV-DVD
- 265 CODES/STANDARDS-CSA/CMVSS
- 1B1 CODES/STANDARDS USA

FOR ELECTRICAL TORQUE SPECIFICATIONS SEE DWG NO. 128783-01-000

FOR ELECTRICAL CALLOUTS SEE DWG NO. 121339-01-000

DESCRIPTION:		WIRING INSTL-BODY, 110V	
SHEET:	ITEM/PART NO.:	REV:	
8 OF 8	000160437 / 32803401000		