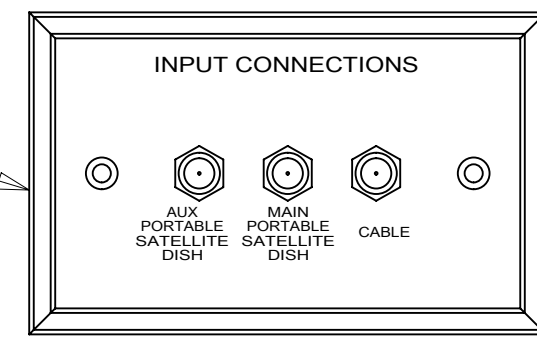
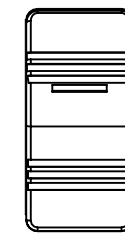


PLATE-WALL, TRIPLE COAX
000159230 / 327556-01-CHT
SCREW
G39-08-08U (2)



DETAIL AA



SWITCH-WATER PUMP
108357-15-000
ACTUATOR
108356-03-CHT
CIRCUITS
AG,JA,AF,JS,JY

DETAIL GA

LABEL-SLIDEOUT
098379-09-000

CONTROL-SLIDEOUT
189400-01-000
SCREW
G11-10-12U (6)

WIRE ASM-AUX WATER TANK
151316-01-000

WIRE ASM-MAIN HOLDING TANK
151317-01-000

WIRE ASM-MAIN HOLDING TANK
151317-01-000

WIRE ASM-COACH
000160442 / 328037-01-000

WIRE ASM-MAIN HOLDING TANK
151317-01-000

WIRE ASM-AUX WATER TANK
151316-02-000

RELAY-AWNING
063912-02-000
SCREW
G11-08-08U

SWITCHES
DETAIL DA

ANTENNA-SATELLITE, AUTO,
STATIONARY, DISH NETWORK
000157700 / 327102-01-CHT

95R

COVER-ELECTRICAL
194965-01-CHT
LABEL-SLIDEOUT
098379-09-000
SCREW
G39-08-12U (4)

CONTROL-SLIDEOUT
189400-01-000
SCREW
G11-10-12U (6)

LIGHT-DOME, SGL, W/SWITCH
000040266 / 319326-01-CHT (4)
SCREW
G11-08-16U (16)
CONNECTOR
031876-01-000 (8)

FROM
WIRE ASM-CHASSIS
TO
LOAD CENTER

TO WATER PUMP

3 WIRE PASSES THROUGH FLOOR IN THIS AREA.

2. ROUTE TANK SENSOR WIRES SO THEY DO NOT PASS OVER SENSORS.
USE WIRE TIE MOUNT 155366-01-000 AND WIRE TIE 8343-01-000
AS NEEDED. TANK SURFACE MUST BE CLEANED USING ISOPROPYL
ALCOHOL AND PRIMED WITH PRIMER 94.

1. AT MINIMUM ALL WIRES TO BE SUPPORTED AND SECURED PER CODE REQUIREMENTS.
USE CLAMP 10495 OR 10497 OR WIRE TIE 8343 OR 108046 AND SCREW G67-XX-XXX
OR G56-XX-XXX AS APPROPRIATE FOR INSTALLATION.

NOTES:

FOR ELECTRICAL
TORQUE
SPECIFICATIONS
SEE DWG NO.
128783-01-000

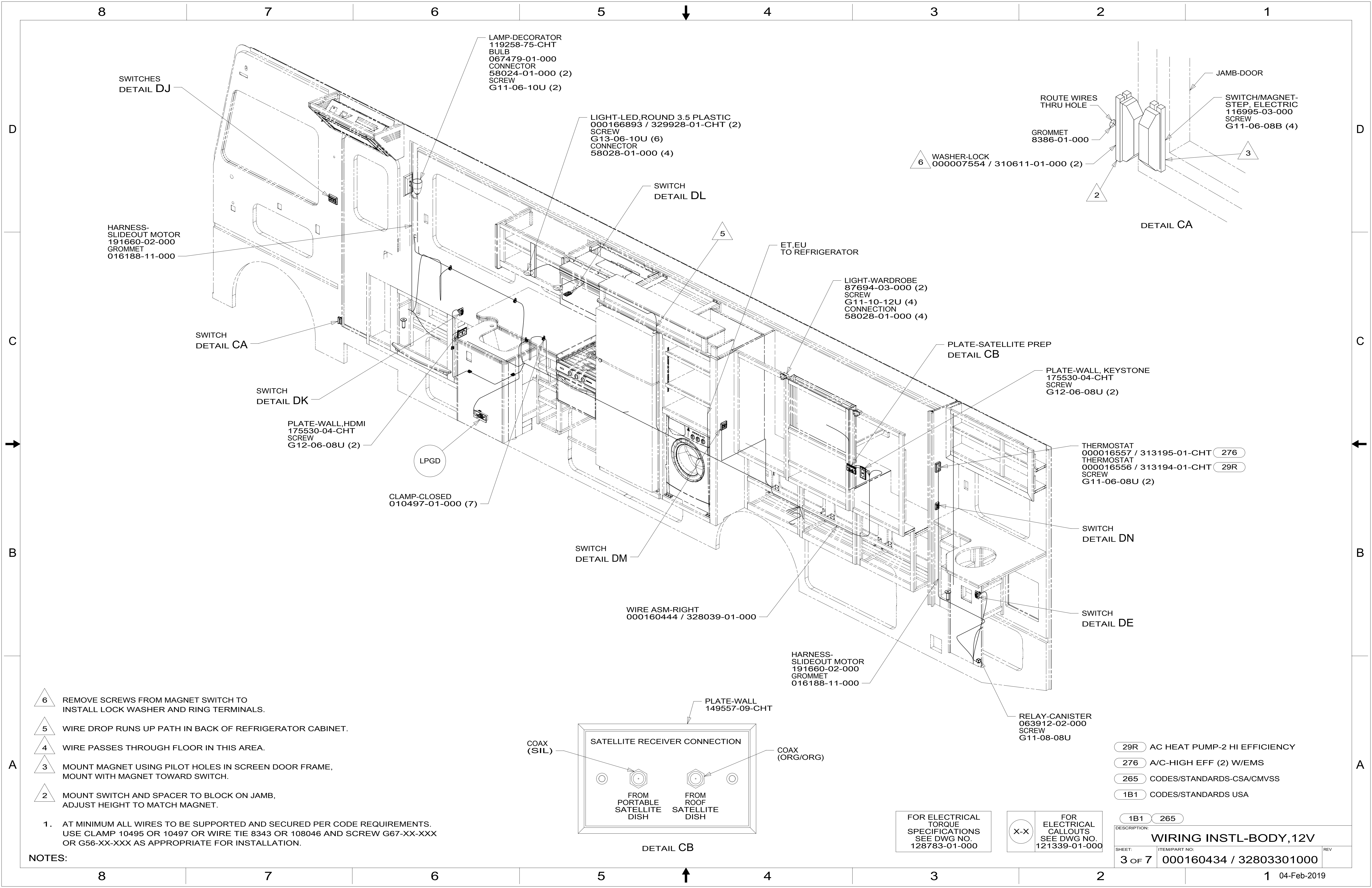
FOR ELECTRICAL
CALLOUTS
SEE DWG NO.
121339-01-000

- 95R SATALLITE TV ANTENNA - AUTOM
- 265 CODES/STANDARDS-CSA/CMVSS
- 1B1 CODES/STANDARDS USA

1B1 265



DSNR:		ALL DIMENSIONS ARE IN MILLIMETERS	
DIFFR:		MATERIAL:	
UNSPECIFIED TOLERANCES:			
WHOLE DIM (X)	: 3		
ONE-PLACE (X.X)	: 1.5		
TWO-PLACE (X.XX)	: 0.50		
ANGLE	: 1°		
REFER TO ES0018 FOR FASTENER TIGHTENING GUIDELINES		WEIGHT: (LBS)	FIRST USED:
			19 F36Z
WIRING INSTL-BODY, 12V			
SHEET:	ITEM/PART NO.:	REV:	
1 OF 7	000160434 / 32803301000		
REF:		1 04-Feb-2019	



SWITCHES
DETAIL DJ

LAMP-DECORATOR
119258-75-CHT
BULB
067479-01-000
CONNECTOR
58024-01-000 (2)
SCREW
G11-06-10U (2)

LIGHT-LED,ROUND 3.5 PLASTIC
000166893 / 329928-01-CHT (2)
SCREW
G13-06-10U (6)
CONNECTOR
58028-01-000 (4)

ROUTE WIRES
THRU HOLE
GROMMET
8386-01-000

SWITCH/MAGNET-
STEP, ELECTRIC
116995-03-000
SCREW
G11-06-08B (4)

HARNESS-
SLIDEOUT MOTOR
191660-02-000
GROMMET
016188-11-000

SWITCH
DETAIL CA

SWITCH
DETAIL DK

PLATE-WALL,HDMI
175530-04-CHT
SCREW
G12-06-08U (2)

CLAMP-CLOSED
010497-01-000 (7)

LPGD

SWITCH
DETAIL DL

ET,EU
TO REFRIGERATOR

LIGHT-WARDROBE
87694-03-000 (2)
SCREW
G11-10-12U (4)
CONNECTION
58028-01-000 (4)

PLATE-SATELLITE PREP
DETAIL CB

PLATE-WALL, KEYSTONE
175530-04-CHT
SCREW
G12-06-08U (2)

THERMOSTAT
000016557 / 313195-01-CHT 276
THERMOSTAT
000016556 / 313194-01-CHT 29R
SCREW
G11-06-08U (2)

SWITCH
DETAIL DN

SWITCH
DETAIL DM

WIRE ASM-RIGHT
000160444 / 328039-01-000

HARNESS-
SLIDEOUT MOTOR
191660-02-000
GROMMET
016188-11-000

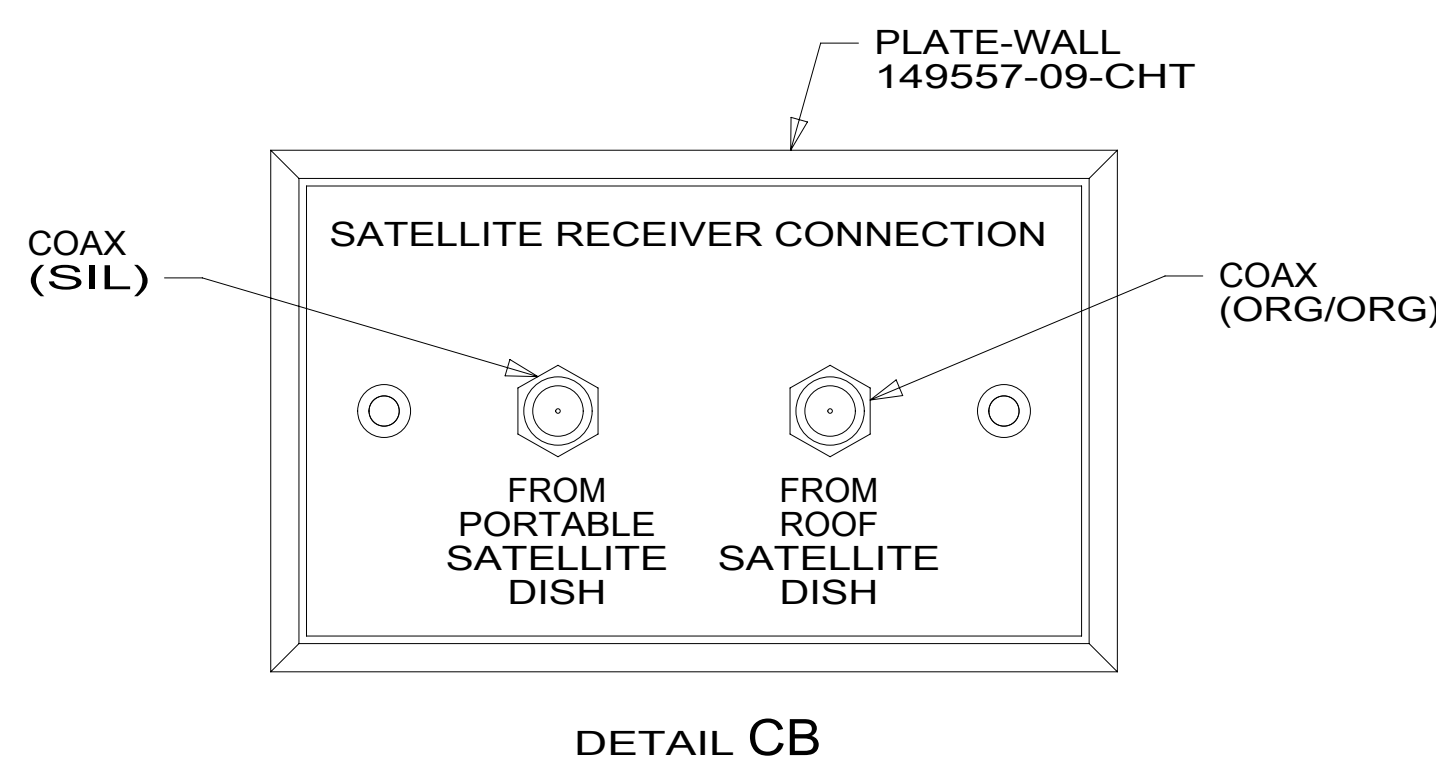
SWITCH
DETAIL DE

RELAY-CANISTER
063912-02-000
SCREW
G11-08-08U

- 6 REMOVE SCREWS FROM MAGNET SWITCH TO INSTALL LOCK WASHER AND RING TERMINALS.
- 5 WIRE DROP RUNS UP PATH IN BACK OF REFRIGERATOR CABINET.
- 4 WIRE PASSES THROUGH FLOOR IN THIS AREA.
- 3 MOUNT MAGNET USING PILOT HOLES IN SCREEN DOOR FRAME, MOUNT WITH MAGNET TOWARD SWITCH.
- 2 MOUNT SWITCH AND SPACER TO BLOCK ON JAMB, ADJUST HEIGHT TO MATCH MAGNET.

1. AT MINIMUM ALL WIRES TO BE SUPPORTED AND SECURED PER CODE REQUIREMENTS. USE CLAMP 10495 OR 10497 OR WIRE TIE 8343 OR 108046 AND SCREW G67-XX-XXX OR G56-XX-XXX AS APPROPRIATE FOR INSTALLATION.

NOTES:

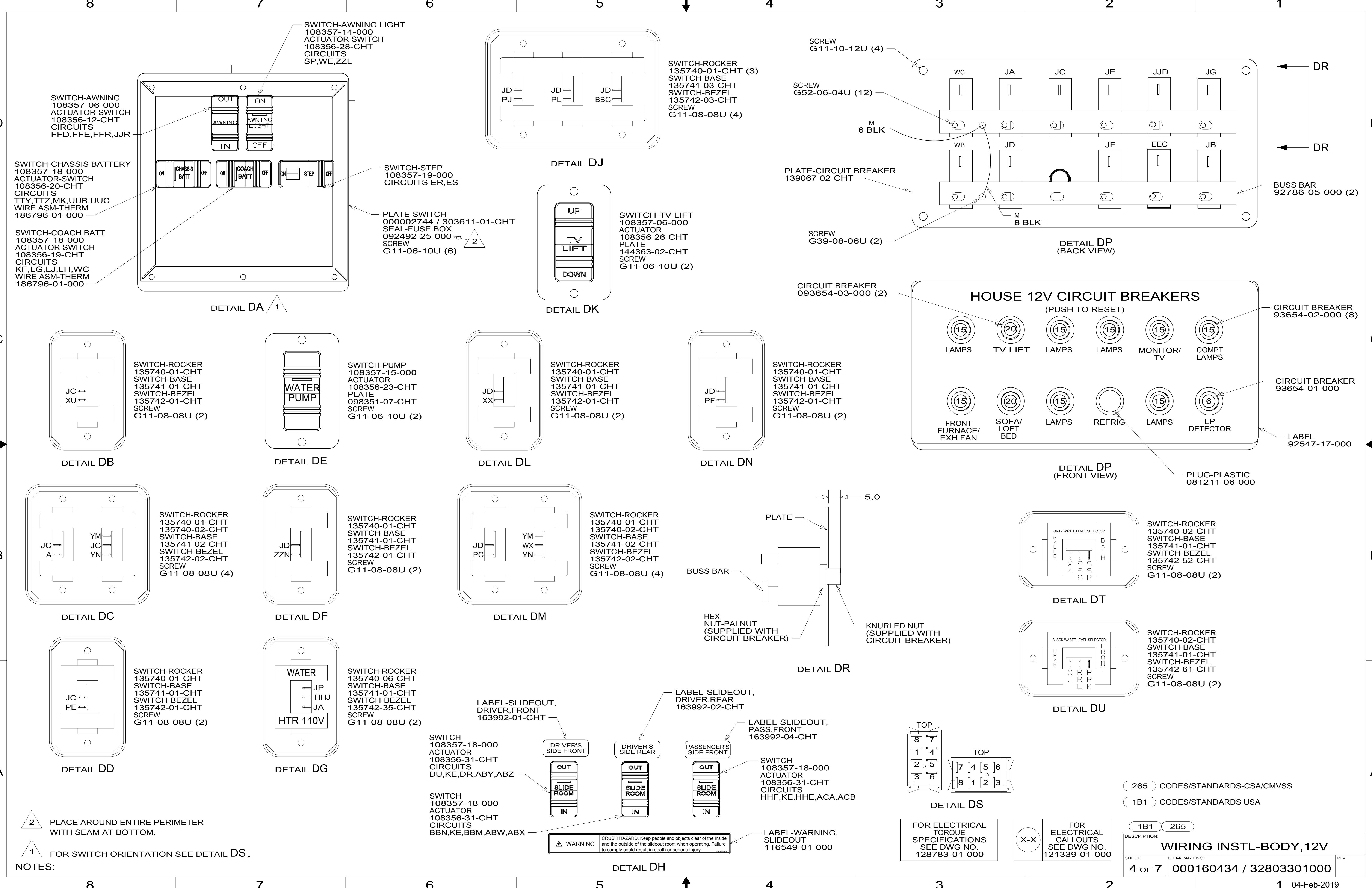


- 29R AC HEAT PUMP-2 HI EFFICIENCY
- 276 A/C-HIGH EFF (2) W/EMS
- 265 CODES/STANDARDS-CSA/CMVSS
- 1B1 CODES/STANDARDS USA

FOR ELECTRICAL
TORQUE
SPECIFICATIONS
SEE DWG NO.
128783-01-000

FOR ELECTRICAL
CALLOUTS
SEE DWG NO.
121339-01-000

DESCRIPTION:	1B1 265	
WIRING INSTL-BODY, 12V		
SHEET:	ITEM/PART NO:	REV
3 OF 7	000160434 / 32803301000	

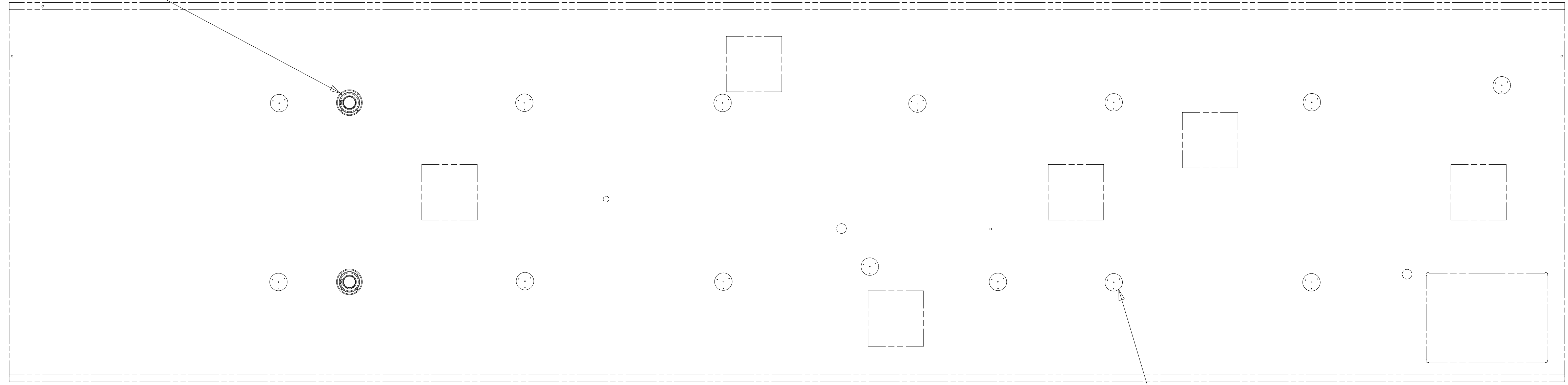


265 CODES/STANDARDS-CSA/CMVSS
1B1 CODES/STANDARDS USA

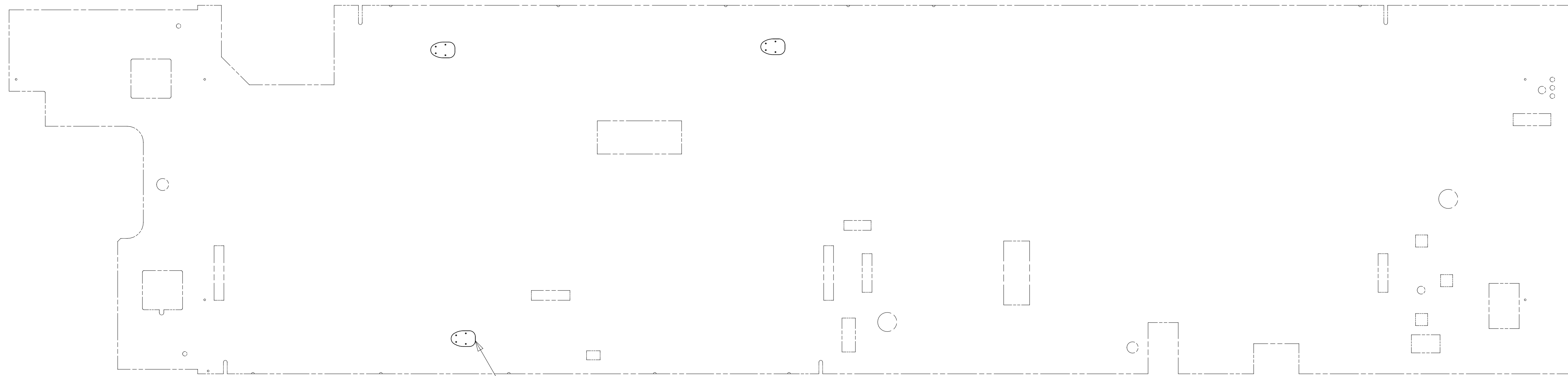
1B1 265
DESCRIPTION:
WIRING INSTL-BODY, 12V
SHEET: 4 OF 7
ITEM/PART NO.: 000160434 / 32803301000
REV

8 7 6 5 4 3 2 1

SPEAKER-ROUND,CEILING
180783-01-CHT (2)
SCREW
G11-10-12U (8)



LIGHT-LED,ROUND 4.5 PLASTIC
000166889 / 329926-01-CHT (14)
SCREW
G13-06-16U (42)
CONNECTOR
58028-01-000 (28)



LIGHT-DOME,SGL,W/SWITCH
000040266 / 319326-01-CHT (3)
SCREW
G11-08-16U (12)
CONNECTOR
031876-01-000 (6)

265 CODES/STANDARDS-CSA/CMVSS

1B1 CODES/STANDARDS USA

1B1 265

FOR ELECTRICAL
TORQUE
SPECIFICATIONS
SEE DWG NO.
128783-01-000

FOR ELECTRICAL
CALLOUTS
SEE DWG NO.
121339-01-000

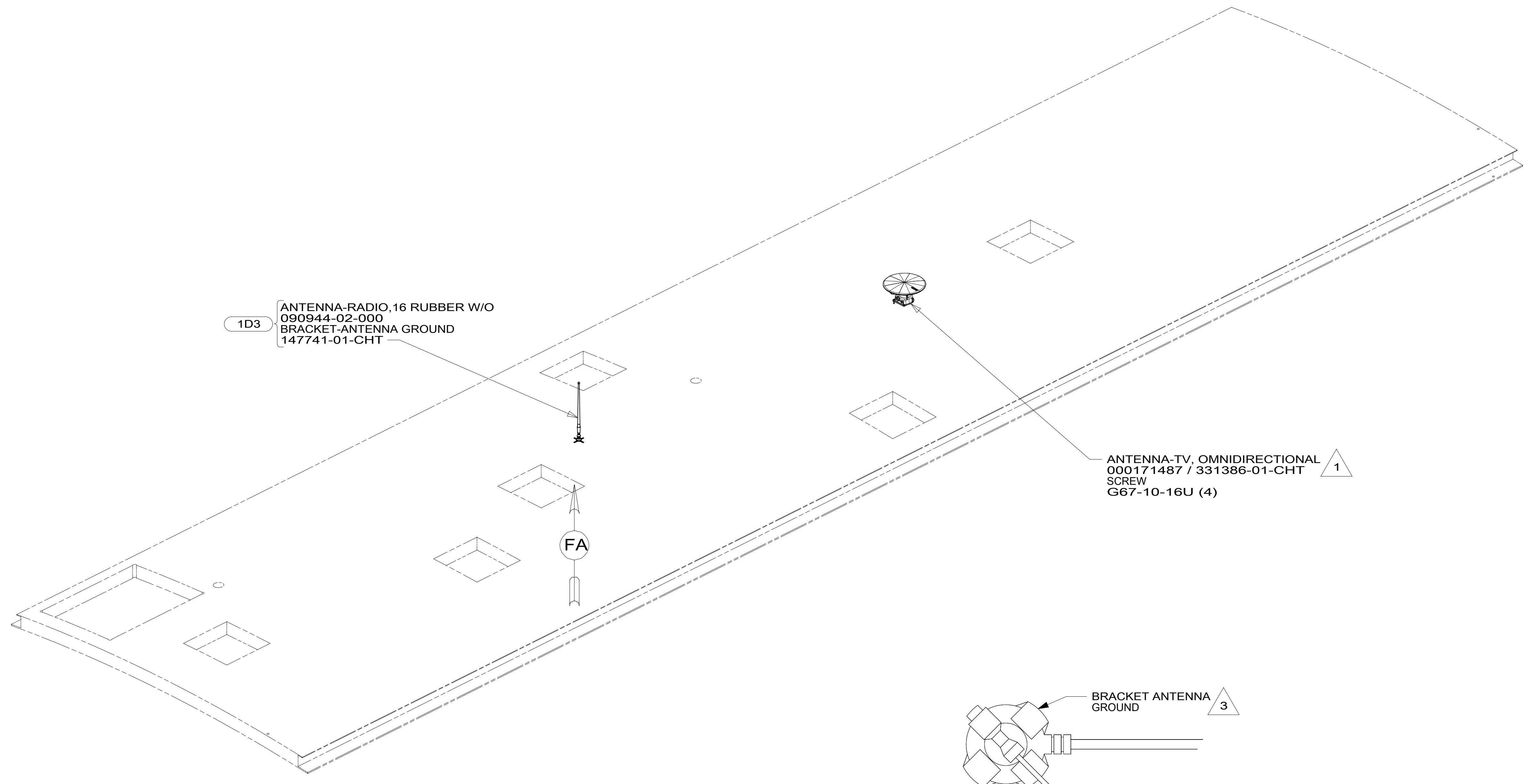
DESCRIPTION:
WIRING INSTL-BODY, 12V

SHEET: 5 OF 7 ITEM/PART NO: 000160434 / 32803301000 REV

8 7 6 5 4 3 2 1 04-Feb-2019

8 7 6 5 4 3 2 1

D
C
B
A



1D3 ANTENNA-RADIO, 16 RUBBER W/O
090944-02-000
BRACKET-ANTENNA GROUND
147741-01-CHT

1 ANTENNA-TV, OMNIDIRECTIONAL
000171487 / 331386-01-CHT
SCREW
G67-10-16U (4)

3 BRACKET ANTENNA
GROUND

JP
FROM WIRE ASM-ROOF

VIEW FA

- NOTES:
- 3 WRAP LEGS AROUND ANTENNA BASE.
 - 2 SEE MANUFACTURER'S INSTALLATION FOR ADDITIONAL INFORMATION.
 - 1 SEE ANTENNA INSTALLATION MANUAL FOR CORRECT INSTALLATION PROCEDURE.

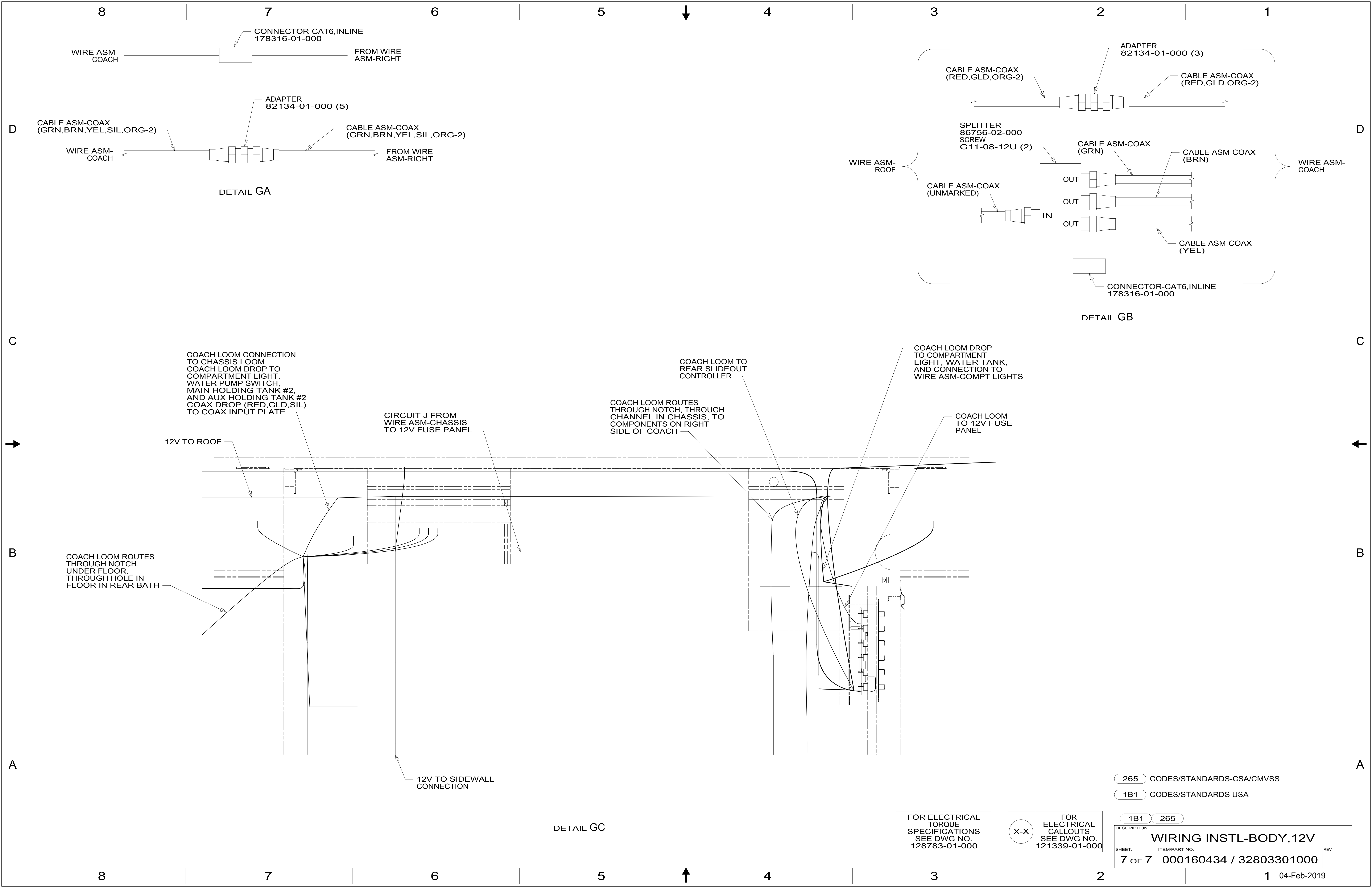
FOR ELECTRICAL
TORQUE
SPECIFICATIONS
SEE DWG NO.
128783-01-000

X-X FOR
ELECTRICAL
CALLOUTS
SEE DWG NO.
121339-01-000

- 1D3 ENTERTAIN CENTR/EXT TV-DVD
- 265 CODES/STANDARDS-CSA/CMVSS
- 1B1 CODES/STANDARDS USA

DESCRIPTION: WIRING INSTL-BODY, 12V	
SHEET: 6 OF 7	ITEM/PART NO: 000160434 / 32803301000
REV 1 04-Feb-2019	

8 7 6 5 4 3 2 1



DETAIL GA

DETAIL GB

DETAIL GC

COACH LOOM CONNECTION TO CHASSIS LOOM
 COACH LOOM DROP TO COMPARTMENT LIGHT, WATER PUMP SWITCH, MAIN HOLDING TANK #2, AND AUX HOLDING TANK #2
 COAX DROP (RED, GLD, SIL) TO COAX INPUT PLATE

CIRCUIT J FROM WIRE ASM-CHASSIS TO 12V FUSE PANEL

COACH LOOM ROUTES THROUGH NOTCH, THROUGH CHANNEL IN CHASSIS, TO COMPONENTS ON RIGHT SIDE OF COACH

COACH LOOM TO REAR SLIDEOUT CONTROLLER

COACH LOOM DROP TO COMPARTMENT LIGHT, WATER TANK, AND CONNECTION TO WIRE ASM-COMPT LIGHTS

COACH LOOM TO 12V FUSE PANEL

COACH LOOM ROUTES THROUGH NOTCH, UNDER FLOOR, THROUGH HOLE IN FLOOR IN REAR BATH

12V TO ROOF

12V TO SIDEWALL CONNECTION

- 265 CODES/STANDARDS-CSA/CMVSS
- 1B1 CODES/STANDARDS USA

FOR ELECTRICAL TORQUE SPECIFICATIONS SEE DWG NO. 128783-01-000

FOR ELECTRICAL CALLOUTS SEE DWG NO. 121339-01-000

DESCRIPTION: WIRING INSTL-BODY, 12V		
SHEET: 7 OF 7	ITEM/PART NO.: 000160434 / 32803301000	REV
1 04-Feb-2019		