

8 7 6 5 4 3 2 1

D

D

C

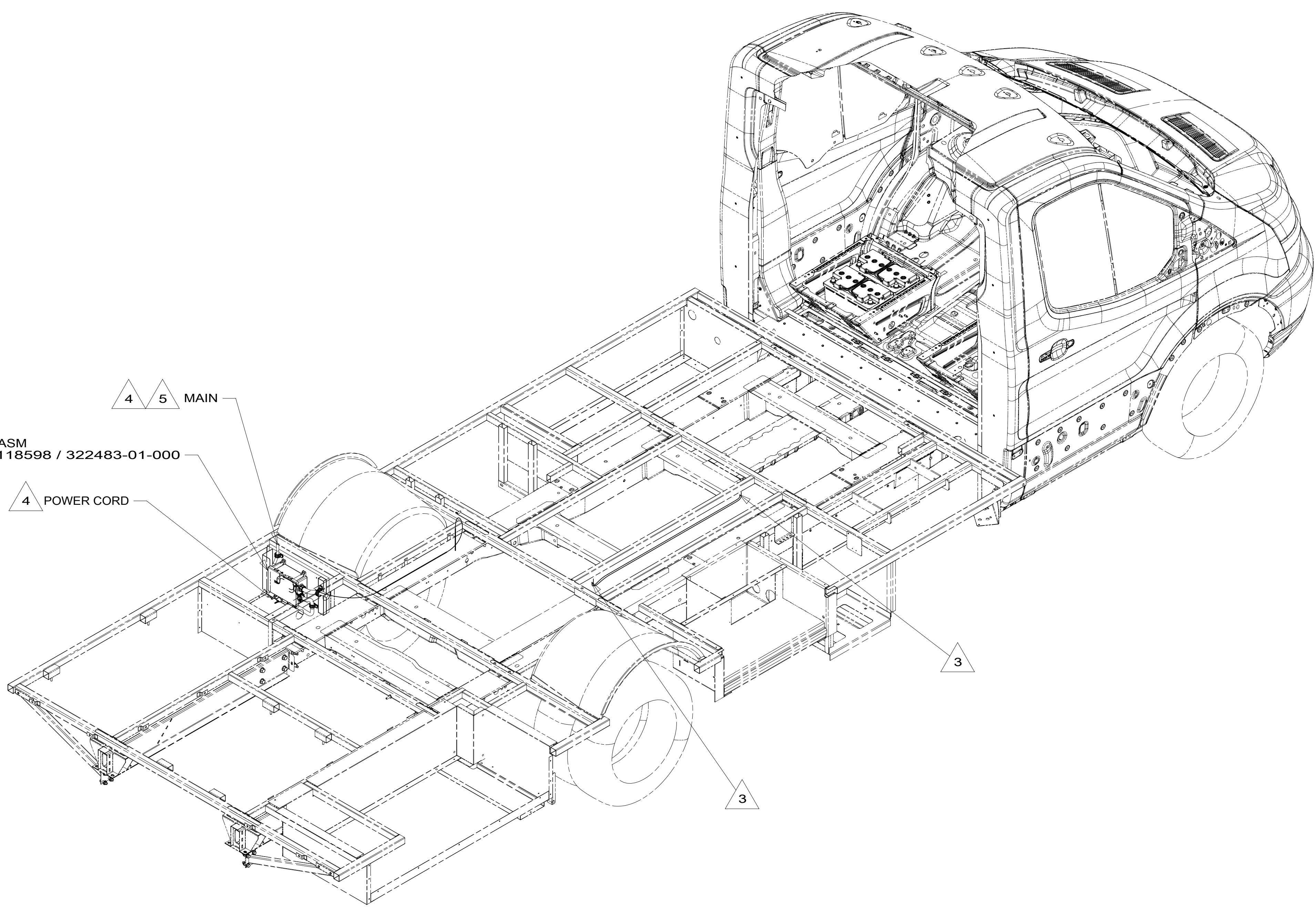
C

B

B

A

A



ATS ASM
000118598 / 322483-01-000

4 5 MAIN
4 POWER CORD

3

3

- 5 MAIN IS RUN UP THROUGH FLOOR, THEN IN FLOOR (WITH BLUE CIRCUIT) TO RIGHT SIDE TO LOAD CENTER.
- 4 SEE ATS ASM FOR ADDITIONAL INFORMATION.
- 3 ROUTE WIRE THRU FLOOR.
2. ALL 110V WIRE TO BE CLAMPED WITH CLAMP 10497-05-000 WITHIN 200MM OF OUTLET BOXES, USE SCREW G67-10-12B.
1. AT MINIMUM ALL WIRES TO BE SUPPORTED AND SECURED PER CODE REQUIREMENTS. USE CLAMP 10495 OR 10497 OR WIRE TIE 8343 OR 108046 AND SCREW G67-XX-XXX OR G56-XX-XXX AS APPROPRIATE FOR INSTALLATION.

NOTES:

FOR ELECTRICAL TORQUE SPECIFICATIONS SEE DWG NO. 128783-01-000

FOR ELECTRICAL CALLOUTS SEE DWG NO. 121339-01-000

265 CODES/STANDARDS-CSA/CMVSS

1B1 CODES/STANDARDS USA

1B1 265



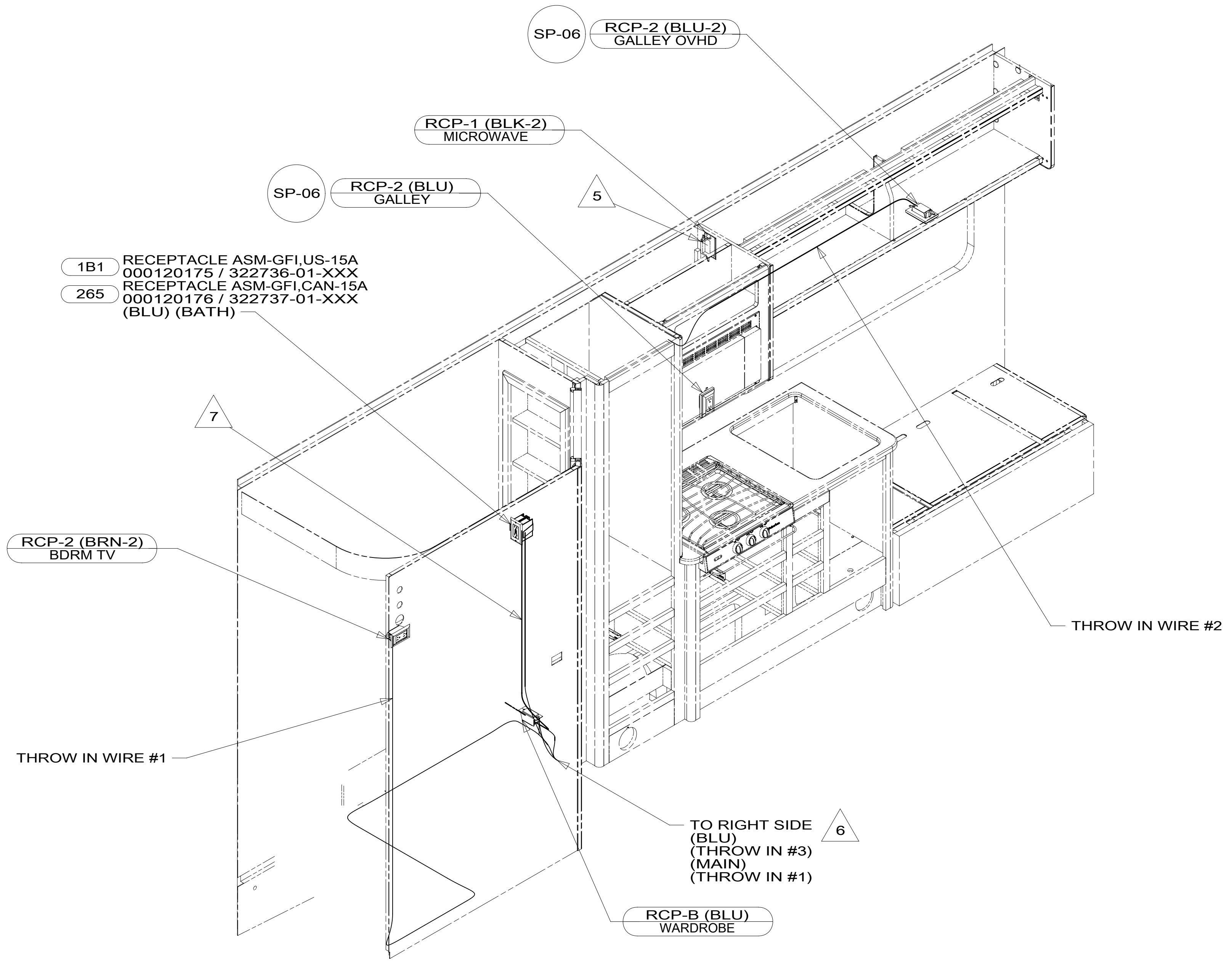
DSNR:		ALL DIMENSIONS ARE IN MILLIMETERS	
DFFR:		MATERIAL:	
UNSPECIFIED TOLERANCES:			
WHOLE DIM (X)	: 3		
ONE-PLACE (X.X)	: 1.5		
TWO-PLACE (X.XX)	: 0.50		
ANGLE	: 1°		
REFER TO ES0018 FOR FASTENER TIGHTENING GUIDELINES	WEIGHT: (LBS)	FIRST USED:	19 423T

WIRING INSTL-BODY, 110V

SHEET:	ITEM/PART NO.:	REF:	REV:
1 OF 6	000159709 / 32774501000		

8 7 6 5 4 3 2 1





- 7 1400MM LOOP, BLUE WIRE, FROM OUT OF FLOOR THRU BLANK, UP TO GFI & BACK TO GFI PROTECTED BLANK. (BLU#2)
- 6 THRU ROUTED PATH IN FLOOR ASM. (BLU, THROW-IN #3, MAIN.
- 5 WIRE ROUTED IN ROOF.
- 4. FOR MORE INFORMATION SEE WIRING DIAGRAM-BODY,110V.
- 3. ALL GROUND WIRE TO BE COVERED WITH TUBING 8041-02-000.
- 2. ALL 110V WIRE TO BE CLAMPED WITH CLAMP 10497-05-000 WITHIN 200MM OF OUTLET BOXES, USE SCREW G67-10-12B.
- 1. AT MINIMUM ALL WIRES TO BE SUPPORTED AND SECURED PER CODE REQUIREMENTS. USE CLAMP 10495 OR 10497 OR WIRE TIE 8343 OR 108046 AND SCREW G67-XX-XXX OR G56-XX-XXX AS APPROPRIATE FOR INSTALLATION.

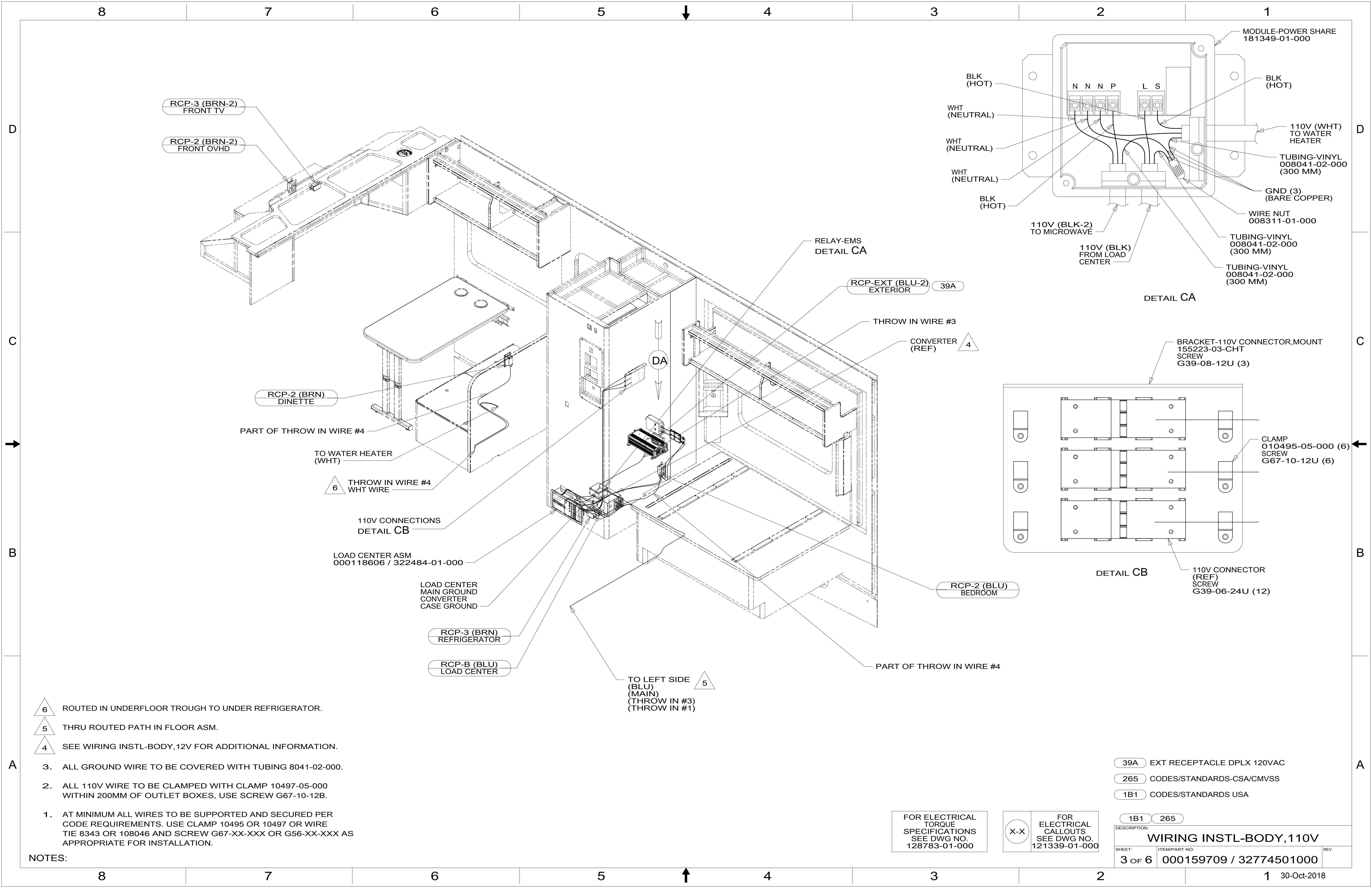
NOTES:

265 CODES/STANDARDS-CSA/CMVSS
1B1 CODES/STANDARDS USA

FOR ELECTRICAL TORQUE SPECIFICATIONS SEE DWG NO. 128783-01-000

FOR ELECTRICAL CALLOUTS SEE DWG NO. 121339-01-000

DESCRIPTION:	
WIRING INSTL-BODY, 110V	
SHEET:	ITEM/PART NO. REV
2 OF 6	000159709 / 32774501000



RCP-3 (BRN-2)
FRONT TV

RCP-2 (BRN-2)
FRONT OVHD

RCP-2 (BRN)
DINETTE

PART OF THROW IN WIRE #4
TO WATER HEATER
(WHT)

6
THROW IN WIRE #4
WHT WIRE

110V CONNECTIONS
DETAIL CB

LOAD CENTER ASM
000118606 / 322484-01-000

LOAD CENTER
MAIN GROUND
CONVERTER
CASE GROUND

RCP-3 (BRN)
REFRIGERATOR

RCP-B (BLU)
LOAD CENTER

5
TO LEFT SIDE
(BLU)
(MAIN)
(THROW IN #3)
(THROW IN #1)

RELAY-EMS
DETAIL CA

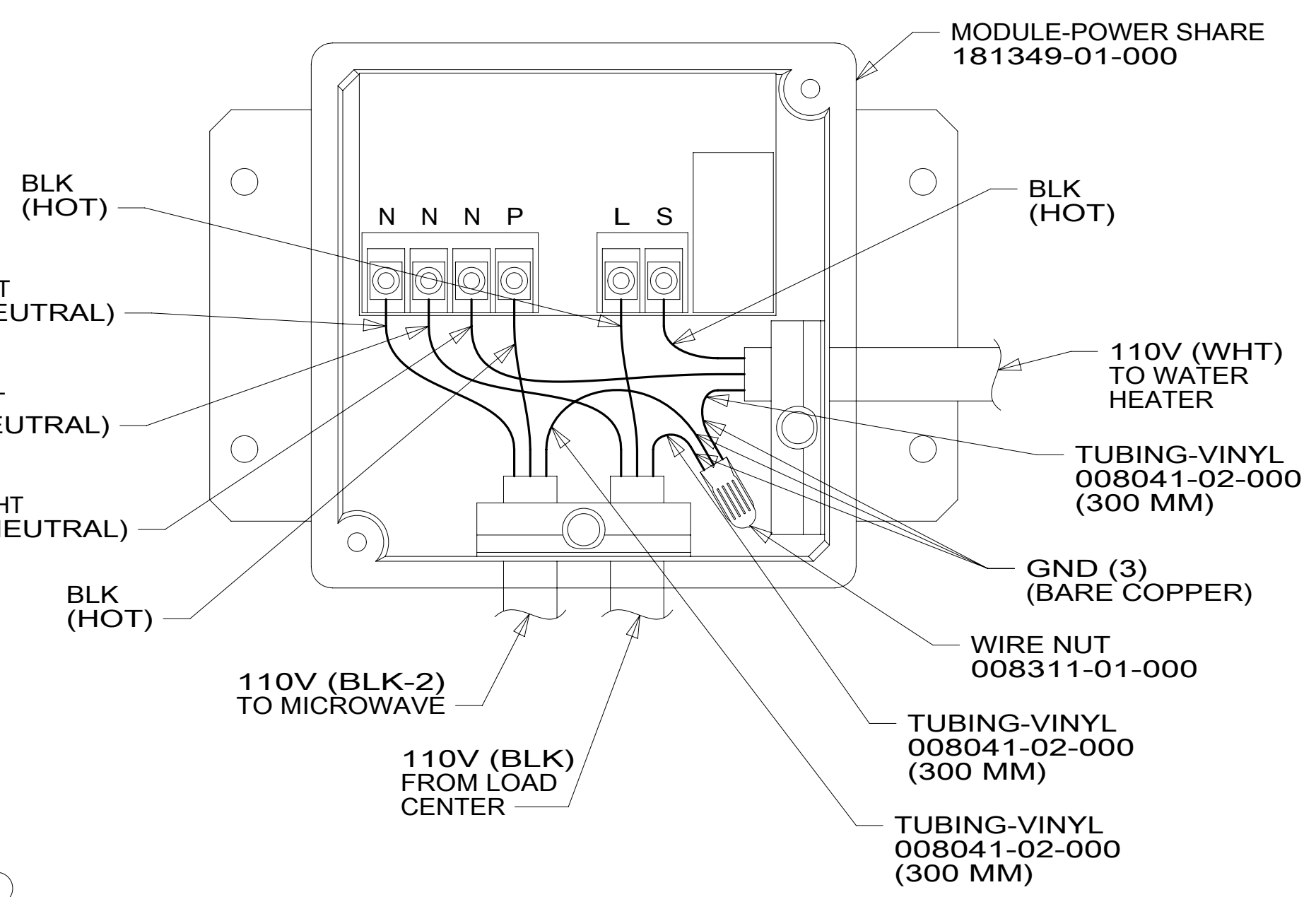
RCP-EXT (BLU-2)
EXTERIOR 39A

THROW IN WIRE #3

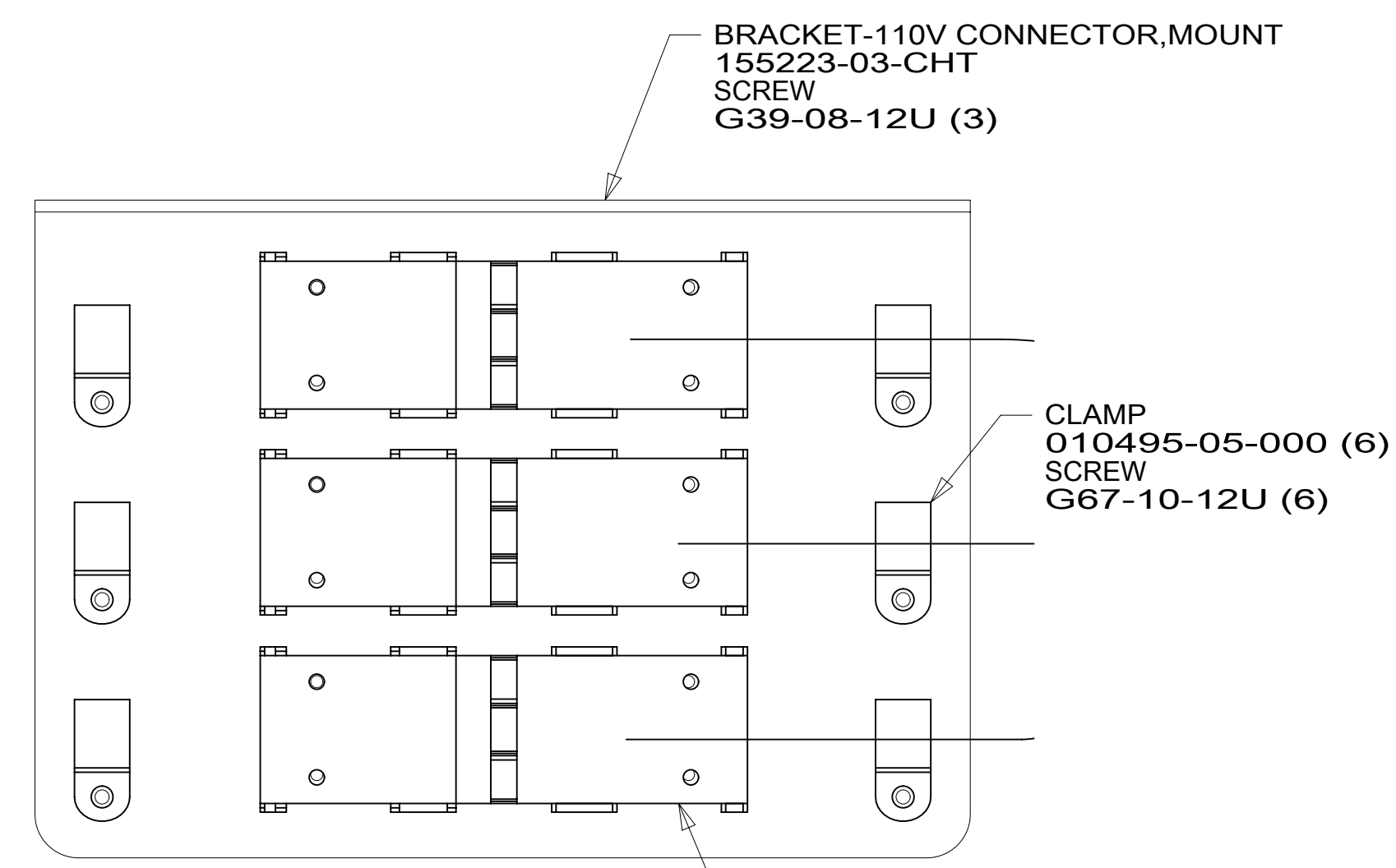
CONVERTER
(REF) 4

RCP-2 (BLU)
BEDROOM

PART OF THROW IN WIRE #4



DETAIL CA



DETAIL CB

- 6 ROUTED IN UNDERFLOOR TROUGH TO UNDER REFRIGERATOR.
- 5 THRU ROUTED PATH IN FLOOR ASM.
- 4 SEE WIRING INSTL-BODY, 12V FOR ADDITIONAL INFORMATION.

- 3. ALL GROUND WIRE TO BE COVERED WITH TUBING 8041-02-000.
- 2. ALL 110V WIRE TO BE CLAMPED WITH CLAMP 10497-05-000 WITHIN 200MM OF OUTLET BOXES, USE SCREW G67-10-12B.
- 1. AT MINIMUM ALL WIRES TO BE SUPPORTED AND SECURED PER CODE REQUIREMENTS. USE CLAMP 10495 OR 10497 OR WIRE TIE 8343 OR 108046 AND SCREW G67-XX-XXX OR G56-XX-XXX AS APPROPRIATE FOR INSTALLATION.

NOTES:

FOR ELECTRICAL
TORQUE
SPECIFICATIONS
SEE DWG NO.
128783-01-000

FOR
ELECTRICAL
CALLOUTS
SEE DWG NO.
121339-01-000

- 39A EXT RECEPTACLE DPLX 120VAC
- 265 CODES/STANDARDS-CSA/CMVSS
- 1B1 CODES/STANDARDS USA

DESCRIPTION:	
WIRING INSTL-BODY, 110V	
SHEET:	ITEM/PART NO.:
3 OF 6	000159709 / 32774501000
REV	

8 7 6 5 4 3 2 1

D

C

B

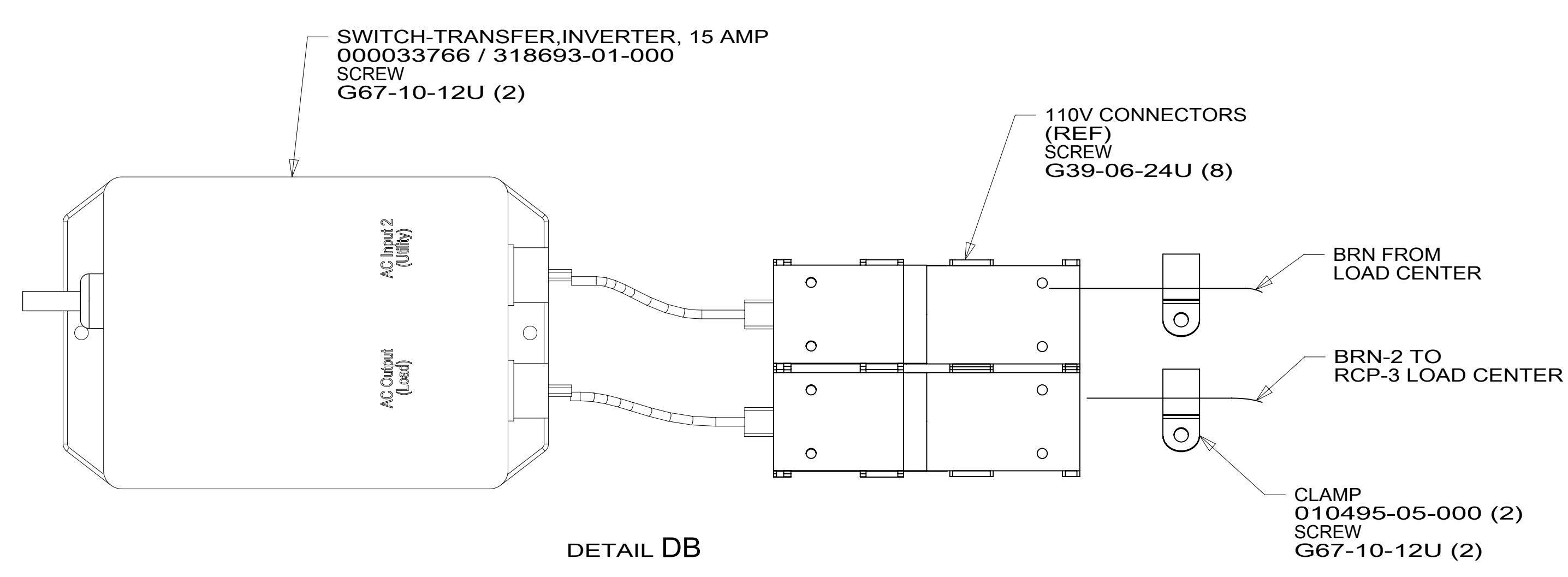
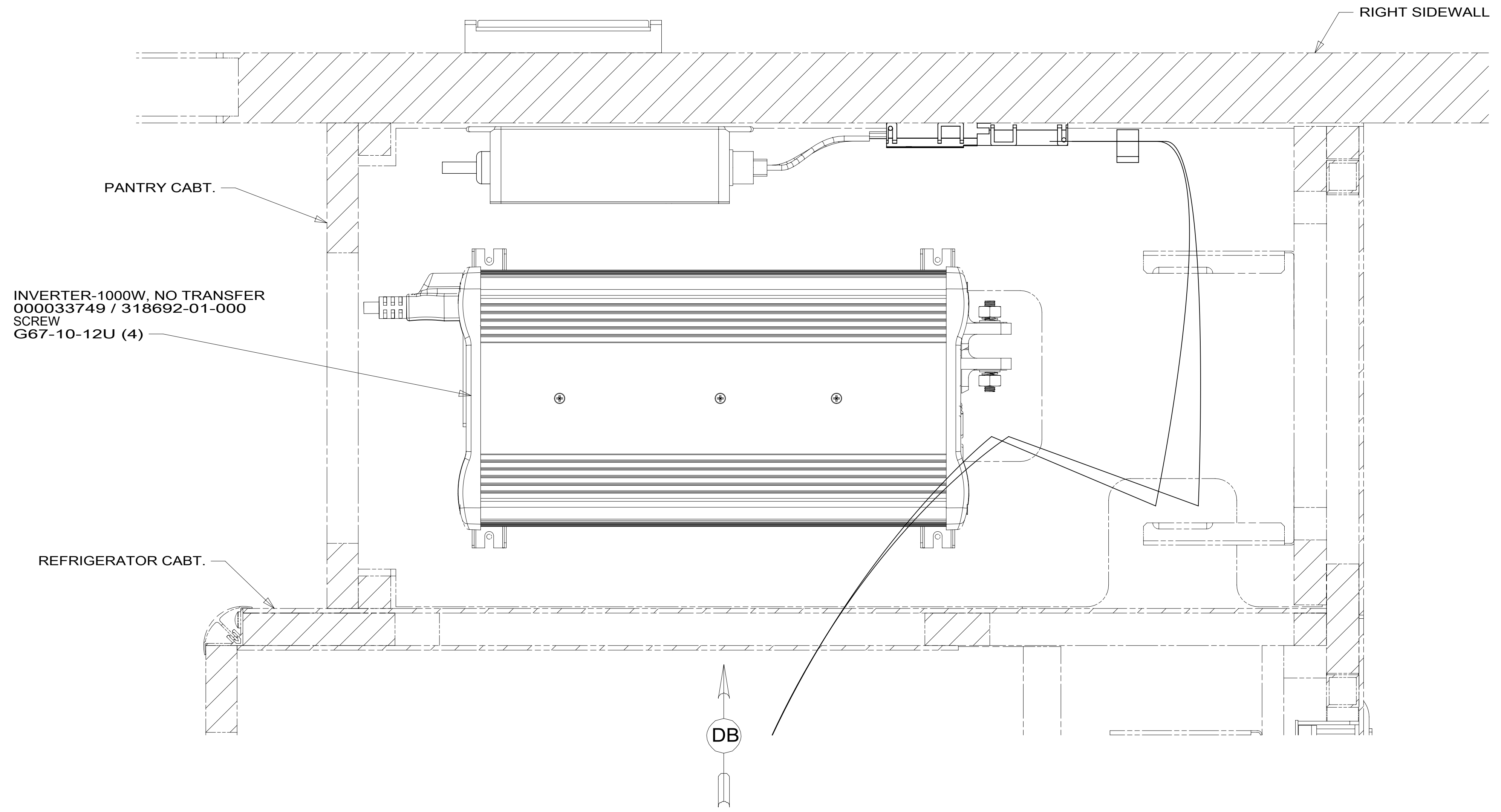
A

D

C

B

A



FOR ELECTRICAL
TORQUE
SPECIFICATIONS
SEE DWG NO.
128783-01-000

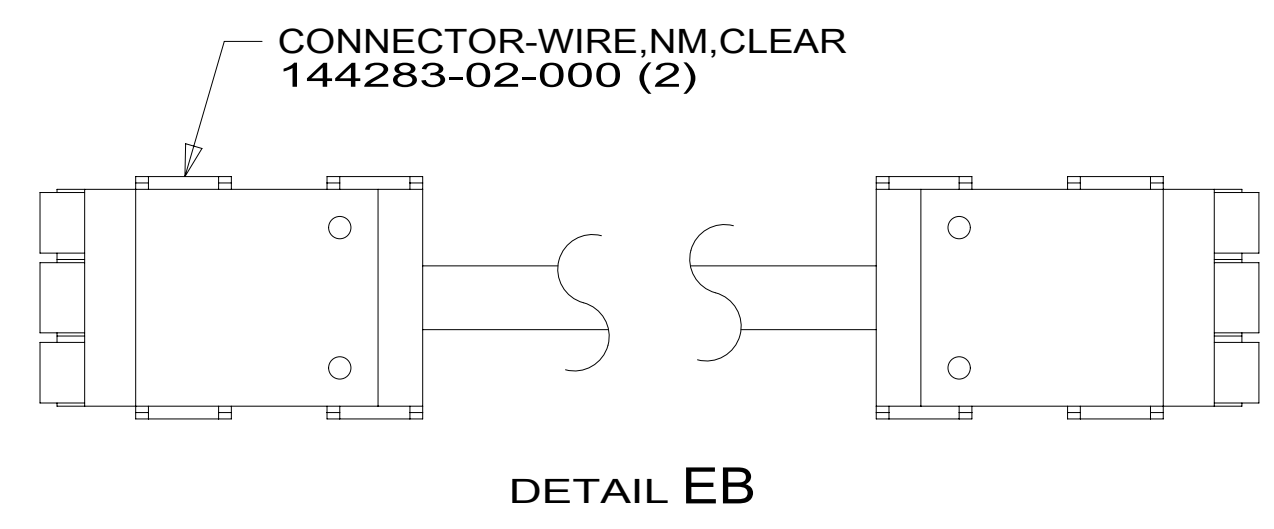
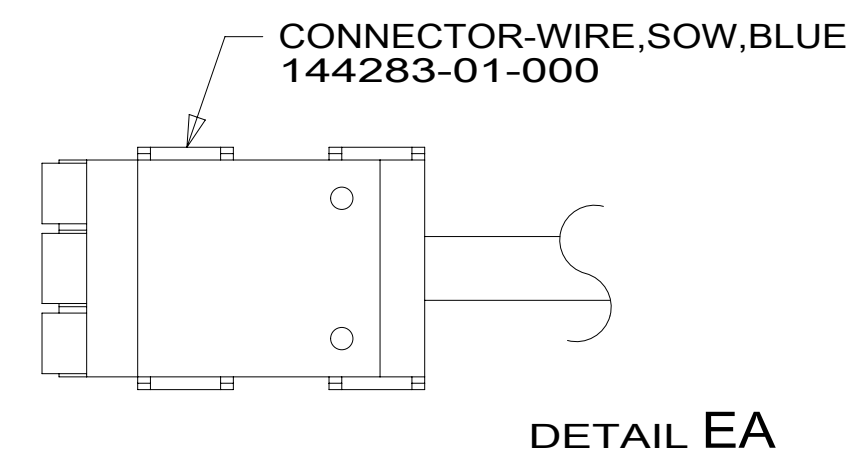
FOR
ELECTRICAL
CALLOUTS
SEE DWG NO.
121339-01-000

- 265 CODES/STANDARDS-CSA/CMVSS
- 1B1 CODES/STANDARDS USA

DESCRIPTION:		1B1 265	
WIRING INSTL-BODY, 110V			
SHEET:	ITEM/PART NO.:	REV	
4 OF 6	000159709 / 32774501000		

8 7 6 5 4 3 2 1 30-Oct-2018

RED	1B1	136135-07-040	△ ₂
	265	136136-07-040	△ ₂
BLK	1B1	136135-06-010	
	265	136136-06-010	
BRN	1B1	136131-03-016	△ ₂
	265	136134-03-016	△ ₂
BRN-2	1B1	136131-19-045	△ ₃
	265	136134-19-045	△ ₃
BLU	1B1	136131-02-065	
	265	136134-02-065	
MAIN	1B1	136137-01-040	
	265	136138-01-040	
BLK-2	1B1	136135-22-040	△ ₂
	265	136136-22-040	△ ₂
WHT	1B1	136135-09-027	
	265	136136-09-027	
THROW IN WIRE #1	1B1	136131-03-075	
	265	136134-03-075	
THROW IN WIRE #2	1B1	136131-02-024	
	265	136134-02-024	
THROW IN WIRE #3	1B1	136131-02-038	
	265	136134-02-038	
THROW IN WIRE #4	1B1	136131-02-050	
	265	136134-02-050	



△₃ SEE DETAIL **EB** FOR CONNECTOR INSTALLATION.
 △₂ SEE DETAIL **EA** FOR CONNECTOR INSTALLATION.
 1. ALL GROUND WIRES TO BE COVERED WITH TUBING 8041-02-000.

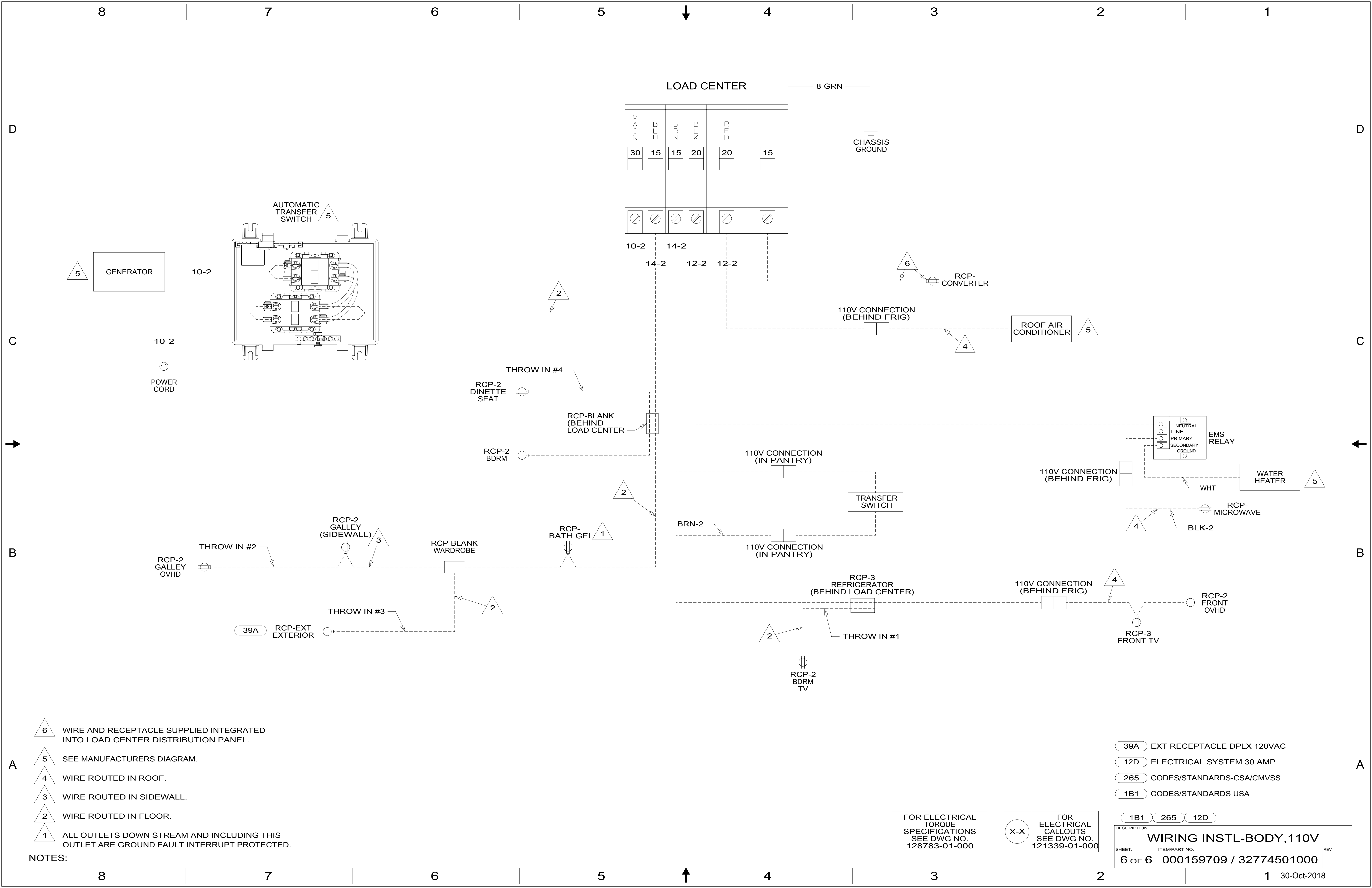
NOTES:

FOR ELECTRICAL TORQUE SPECIFICATIONS SEE DWG NO. 128783-01-000

FOR ELECTRICAL CALLOUTS SEE DWG NO. 121339-01-000

265 CODES/STANDARDS-CSA/CMVSS
 1B1 CODES/STANDARDS USA

DESCRIPTION: WIRING INSTL-BODY, 110V	
SHEET: 5 OF 6	ITEM/PART NO.: 000159709 / 32774501000
REV 1 30-Oct-2018	



- NOTES:
- 6 WIRE AND RECEPTACLE SUPPLIED INTEGRATED INTO LOAD CENTER DISTRIBUTION PANEL.
 - 5 SEE MANUFACTURERS DIAGRAM.
 - 4 WIRE ROUTED IN ROOF.
 - 3 WIRE ROUTED IN SIDEWALL.
 - 2 WIRE ROUTED IN FLOOR.
 - 1 ALL OUTLETS DOWN STREAM AND INCLUDING THIS OUTLET ARE GROUND FAULT INTERRUPT PROTECTED.

- 39A EXT RECEPTACLE DPLX 120VAC
- 12D ELECTRICAL SYSTEM 30 AMP
- 265 CODES/STANDARDS-CSA/CMVSS
- 1B1 CODES/STANDARDS USA

FOR ELECTRICAL TORQUE SPECIFICATIONS SEE DWG NO. 128783-01-000

FOR ELECTRICAL CALLOUTS SEE DWG NO. 121339-01-000

DESCRIPTION:		
WIRING INSTL-BODY, 110V		
SHEET:	ITEM/PART NO.:	REV:
6 OF 6	000159709 / 32774501000	