

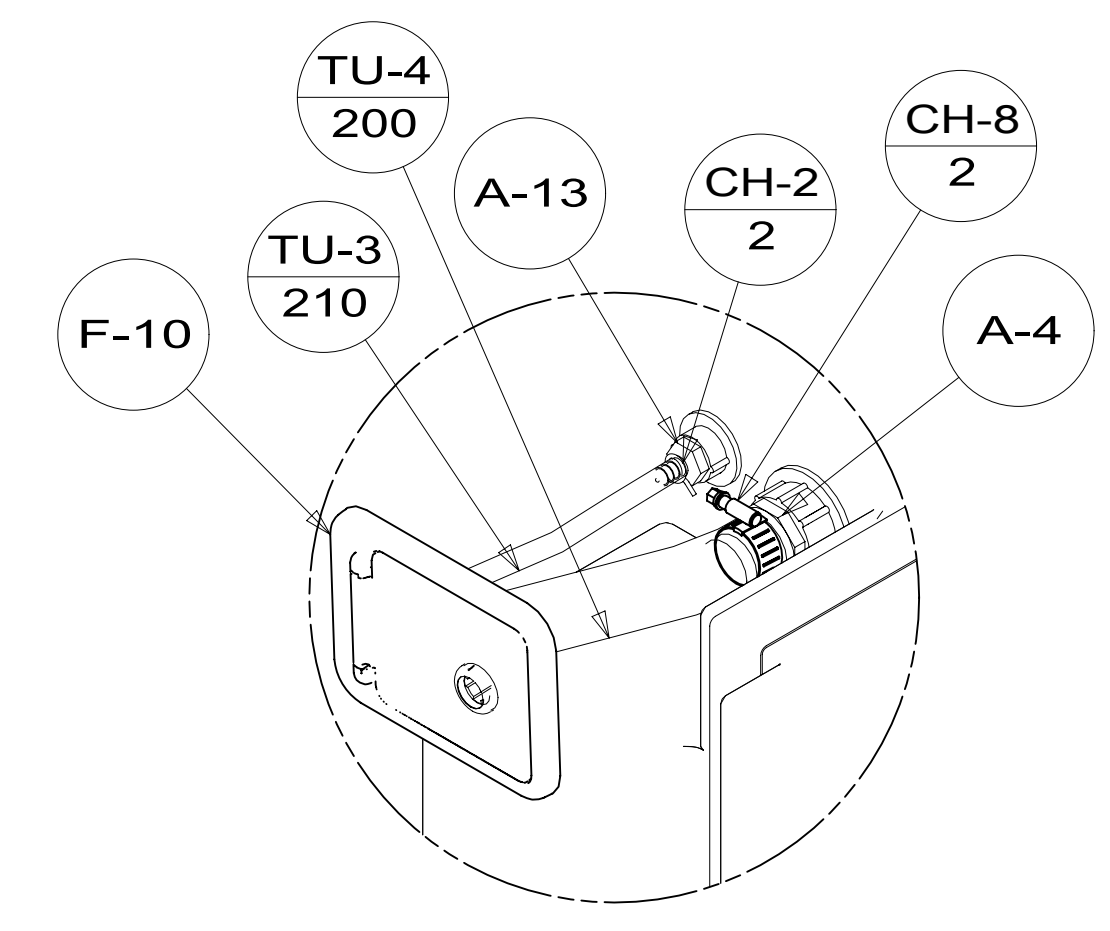
8. ALL CRIMP FITTINGS TO 1/2" PEX TUBING REQUIRE 1/2" CLAMP 000156249 / 326670-01-000.
7. ALL CRIMP FITTINGS TO 5/8" PEX TUBING REQUIRE 5/8" CLAMP 000156248 / 326669-01-000.
6. LABEL HOT AND COLD SUPPLY TUBES AND TAPE FITTING TO TUBE BEFORE CABINET SET TO PREVENT MOVEMENT.
5. ADD PIPE WRAP (LADDER SCRAP 110157-02-000) INSULATION.
4. ADD TEFLON TAPE 010405-02-000.
3. ALL TUBING TO BE SECURED AT 1200 INTERVALS MAXIMUM WITH CLAMP 010495-01-000 AND SCREW 000G67-10-12U OR EQUIVALENT.
2. TUBING TO BE INSTALLED WITH SUFFICIENT SLOPE TO PROVIDE DRAINAGE TO NEAREST VALVE.
1. PLASTIC FITTINGS TO BE SEALED WITH SEALANT 084456-01-000.

NOTES:

X-X

FOR WATER CALLOUTS SEE DWG NO. 000209446 / 303369-01-000

<b>WINNEBAGO</b> <sup>®</sup>		COPYRIGHT 2018 WINNEBAGO INDUSTRIES, INC.	
DSNR:		ALL DIMENSIONS ARE IN MILLIMETERS	
DIFFR:		MATERIAL:	
UNSPECIFIED TOLERANCES:			
WHOLE DIM (X)	3		
ONE-PLACE (X.X)	1.5		
TWO-PLACE (X.XX)	0.50		
ANGLE	1°		
REFER TO ES0018 FOR FASTENER TIGHTENING GUIDELINES	WEIGHT: (LBS)	FIRST USED: (REF)	19 423T
DESCRIPTION: WATER SYSTEM INSTL			
SHEET: 1 OF 3	ITEM/PART NO: 000159337 / 32759401000	REV:	

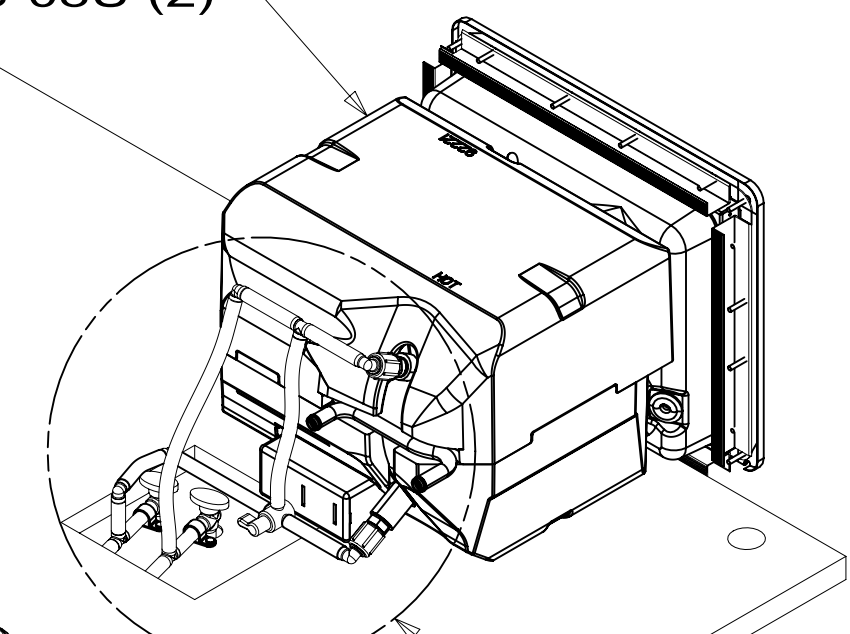


DETAIL BB

TANK-WATER.ASM  
191827-02-000

FAUCET-GAL,SGL CNTL,HI SPOUT  
000025294 / 315240-01-CHT

WATER HEATER INSTL-6 GAL  
186899-03-000  
CABLE  
076767-03-000  
SCREW  
000G39-08-08U (2)



DETAIL BC  
DETAIL BE

STRAP-TANK, WATER  
000125324 / 324137-01-CHT (2)  
WASHER  
000E13-22-00U (4)  
NUT  
000D39-05-00U (4)

DETAIL BB

A-33

DETAIL BF

(HOT) TU-8 895

E-54

(COLD) TU-8 850

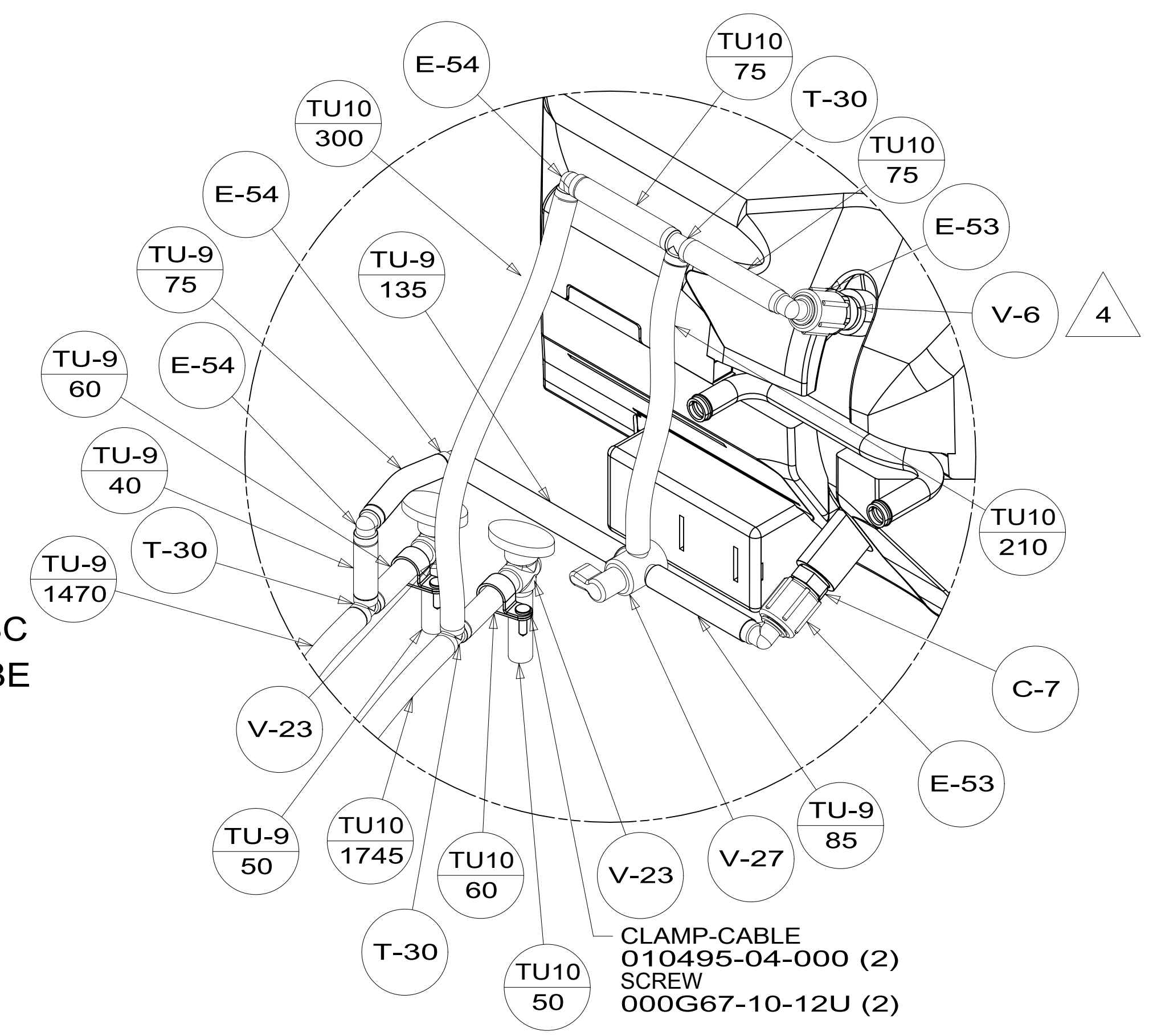
TU10 500

TU-9 515

T-30

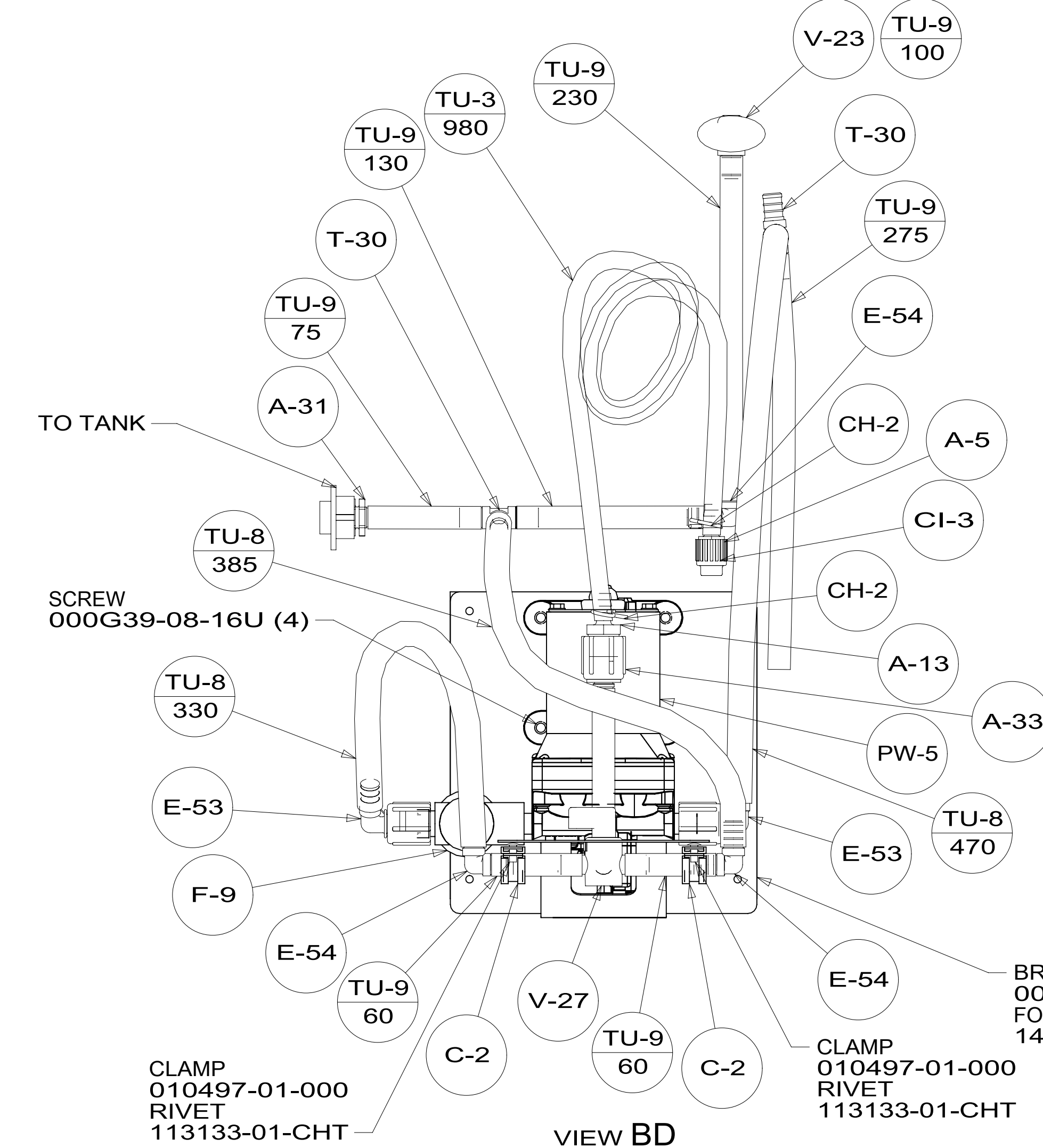
T-30

VIEW BA



DETAIL BC  
(SHOWN W/O FLOOR)

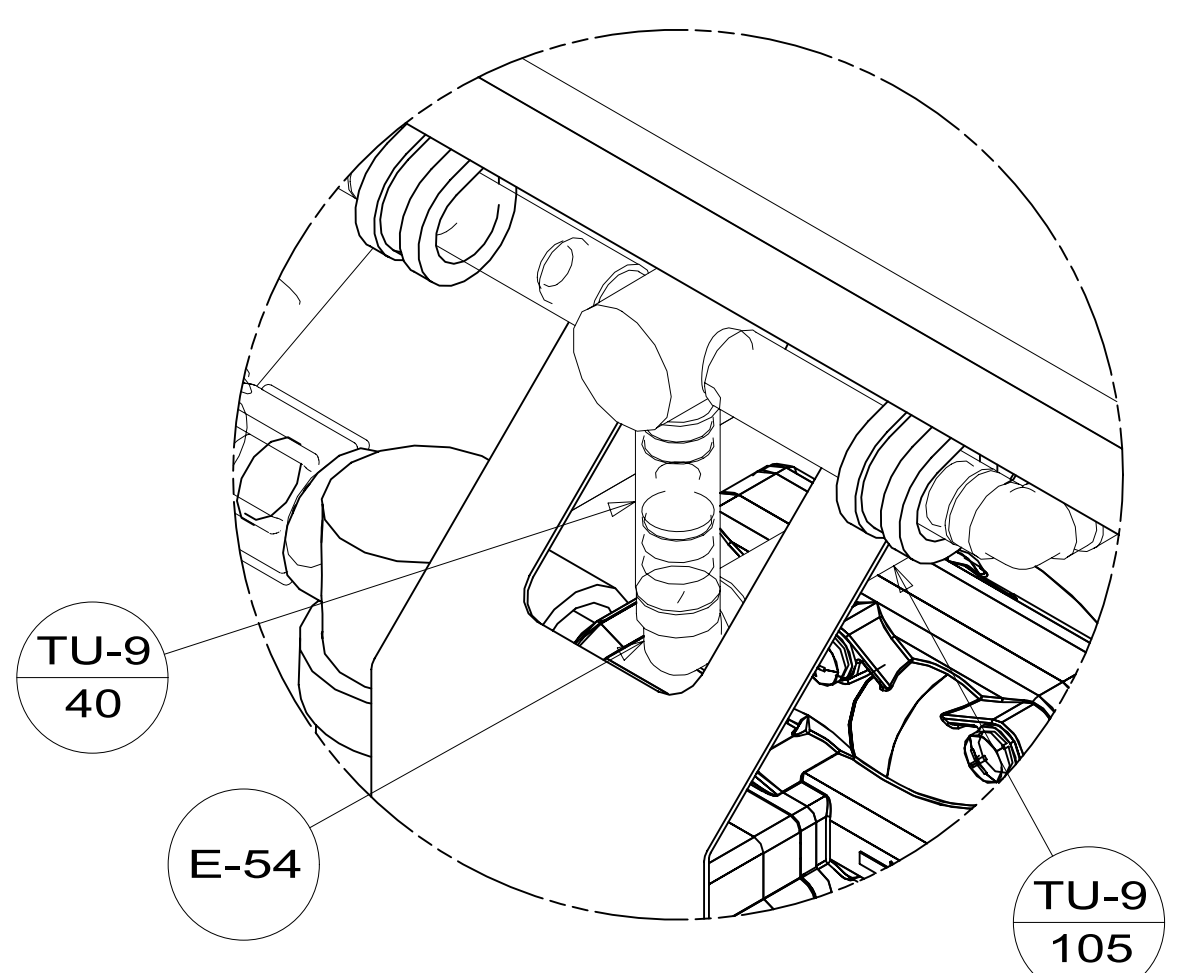
CLAMP-CABLE  
010495-04-000 (2)  
SCREW  
000G67-10-12U (2)



VIEW BD  
(SHOWN W/O FLOOR & CABINETS)

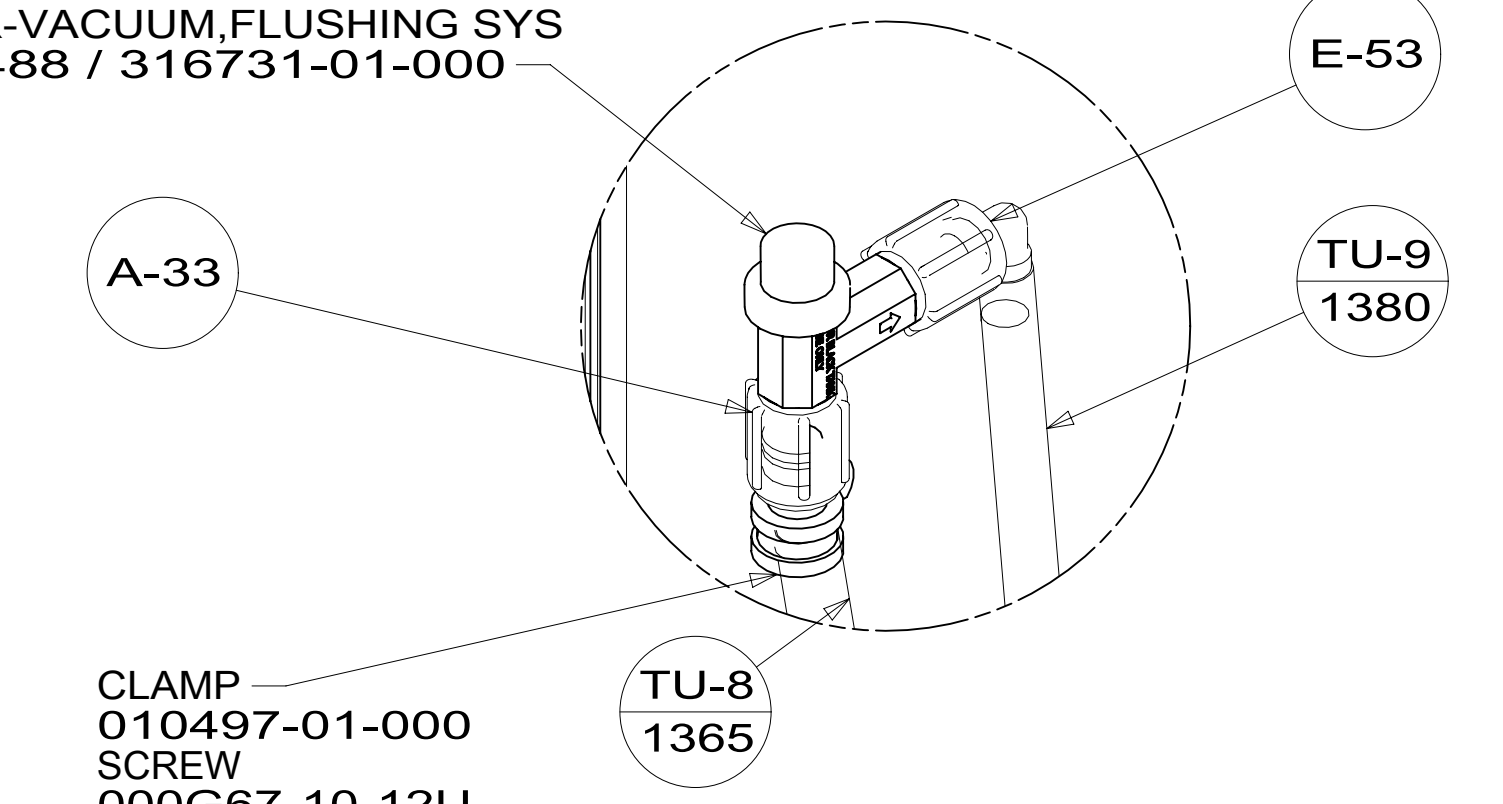
BRACKET-WATER PUMP  
000029826 / 316532-01-CHT  
FOAM  
140364-01-CHT

CLAMP  
010497-01-000  
RIVET  
113133-01-CHT



DETAIL BF

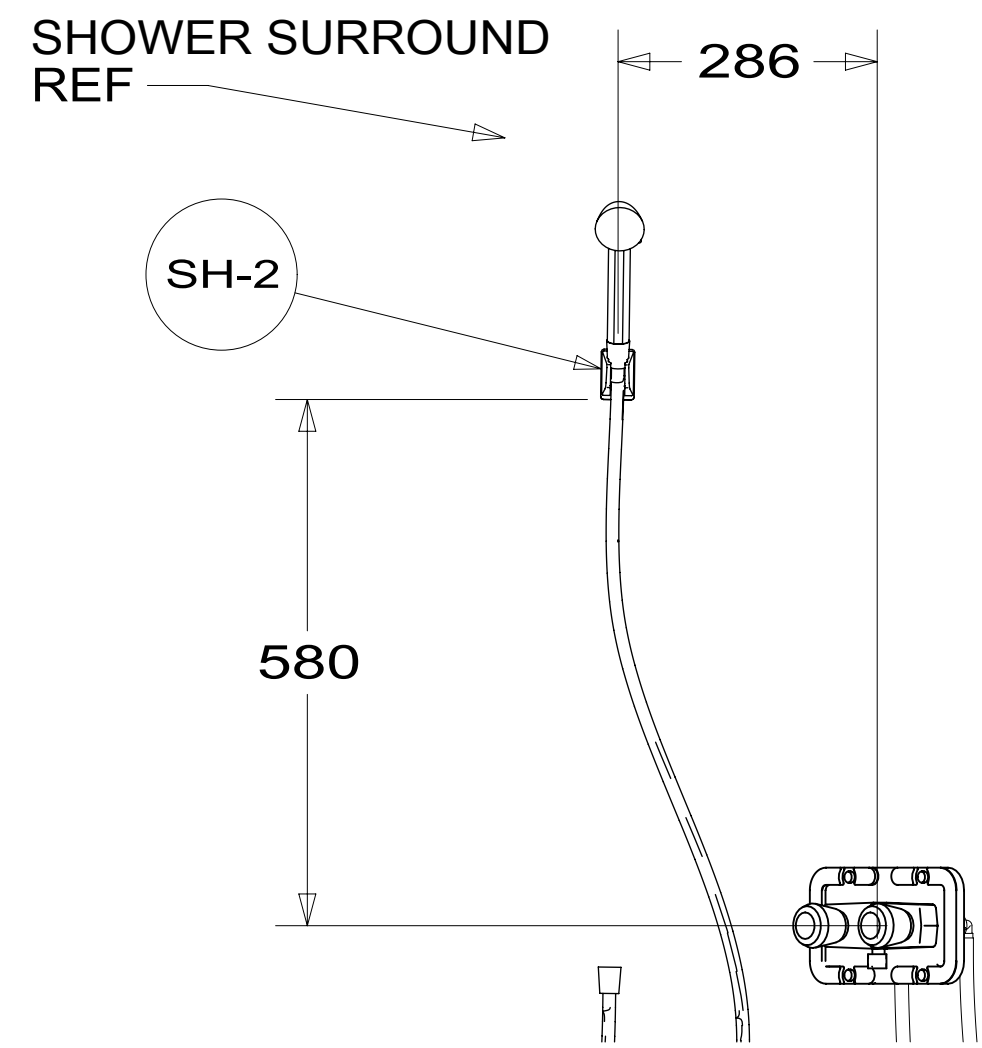
BREAKER-VACUUM,FLUSHING SYS  
000030488 / 316731-01-000



DETAIL BE

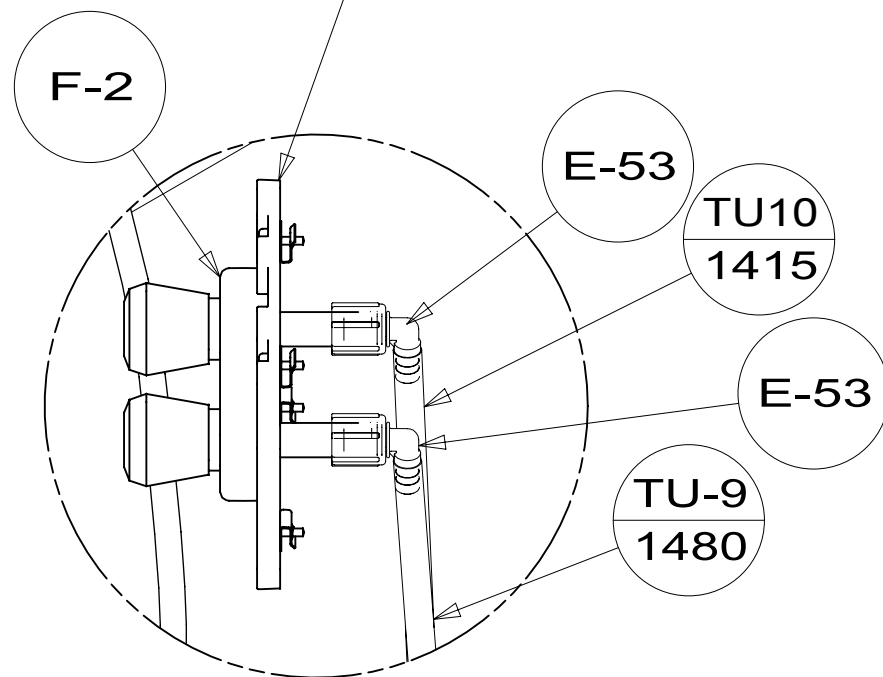
CLAMP  
010497-01-000  
SCREW  
000G67-10-12U

DESCRIPTION:		
<b>WATER SYSTEM INSTL</b>		
SHEET:	ITEM/PART NO.:	REV
2 OF 3	000159337 / 32759401000	



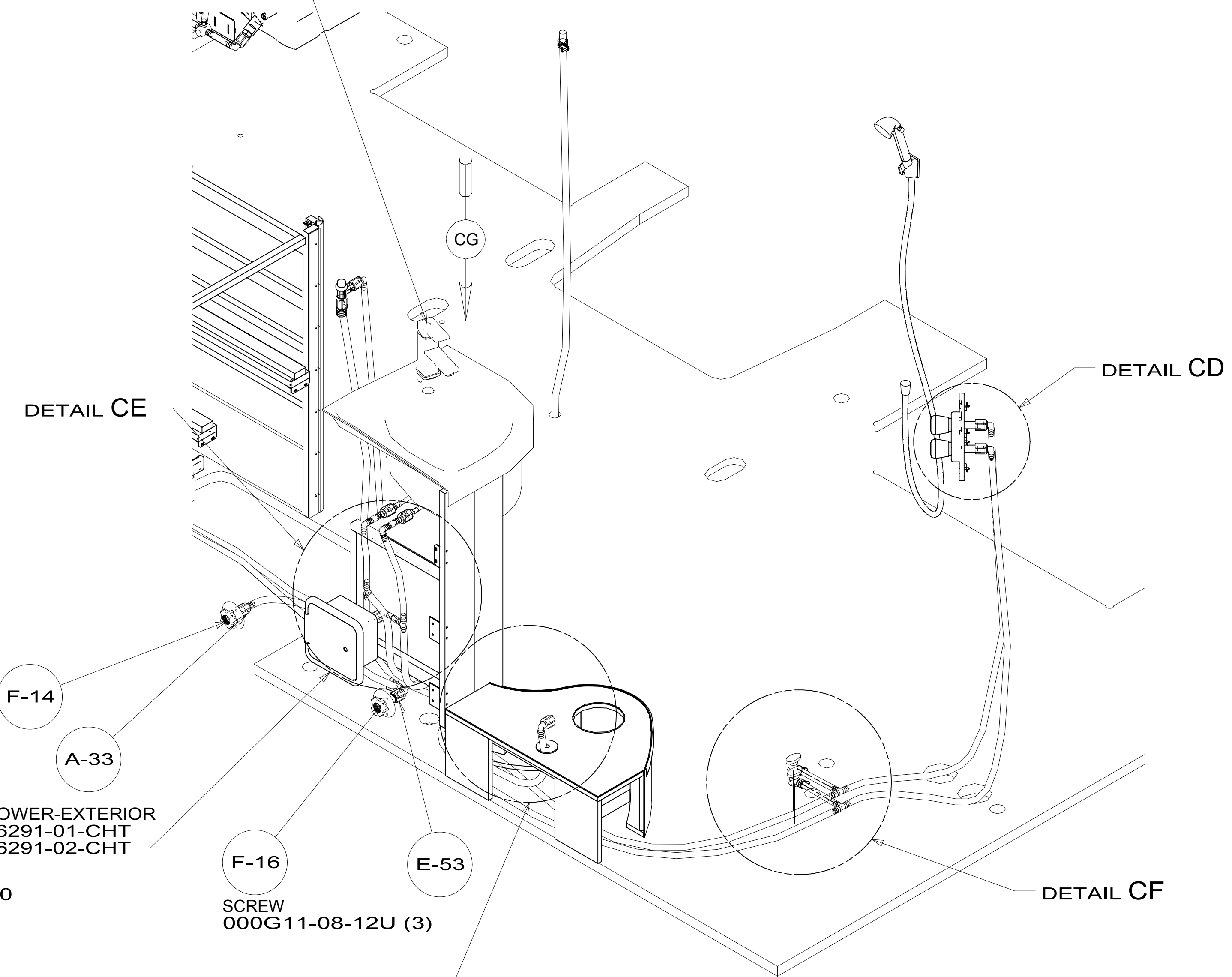
SECTION CB-CB

- PANEL-SHOWER FAUCET 167738-02-CHT
- COVER-SCREW,NO 8 166569-01-CHT (4)
- SCREW-PAN,HEAD 000G39-08-12U (4)
- NUT-SPEED-U TYPE NO 8 040921-05-000 (4)



DETAIL CD (SHOWN W/O SHOWER)

- FAUCET-LAVATORY,BASIN,150MM 187518-01-CHT



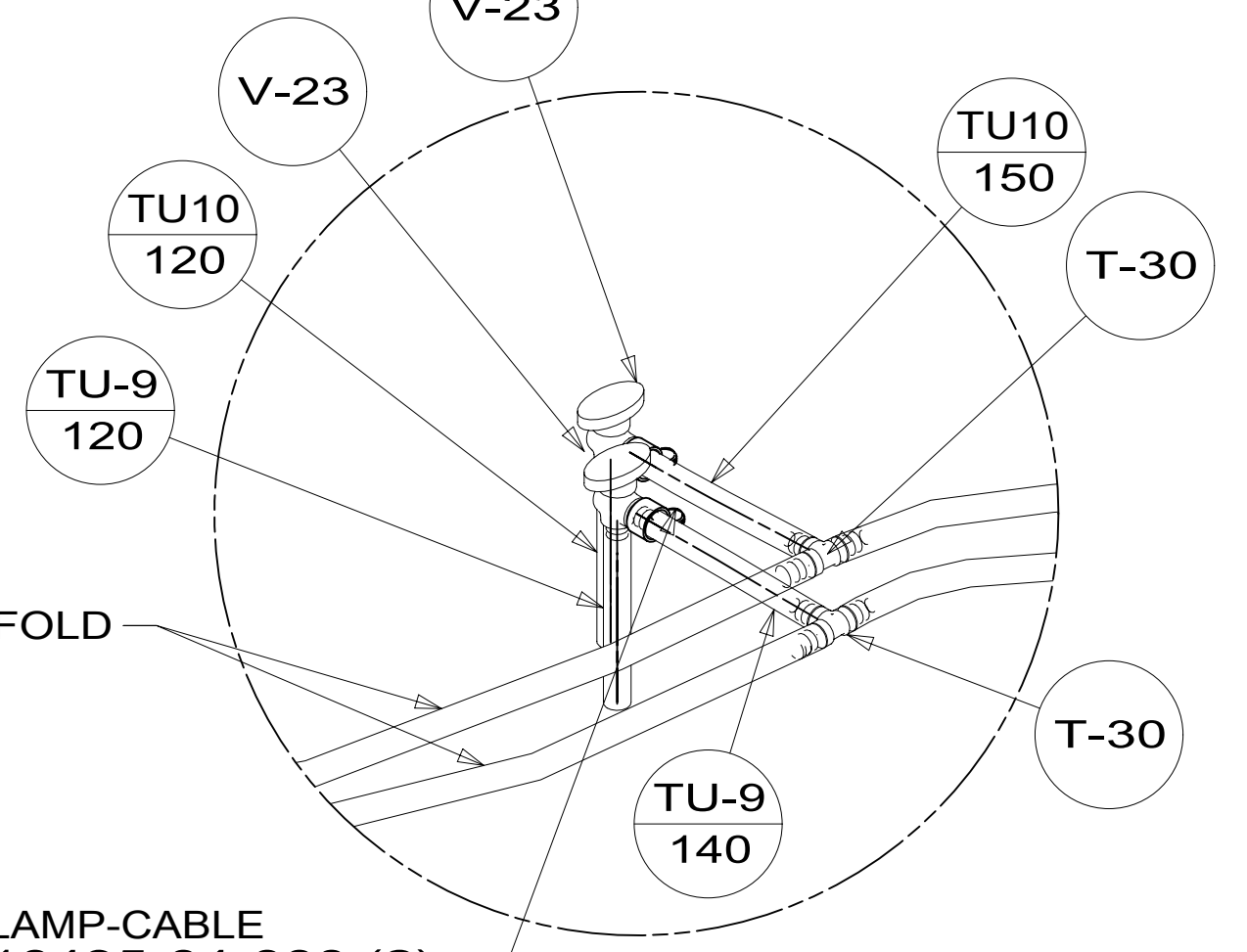
DETAIL CE

- SHOWER-EXTERIOR 166291-01-CHT 166291-02-CHT

- F-16 SCREW 000G11-08-12U (3)

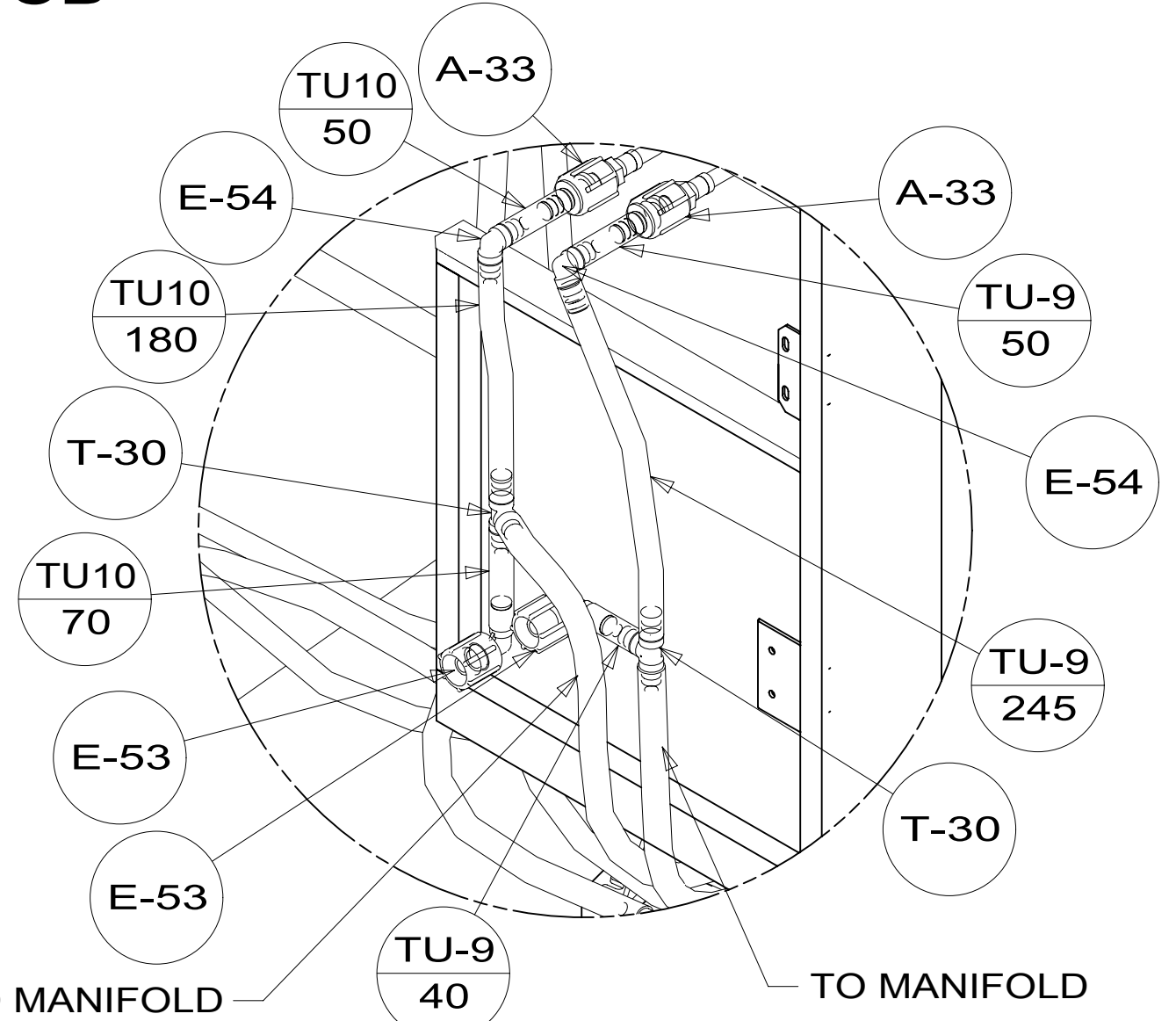
DETAIL CH

VIEW CA

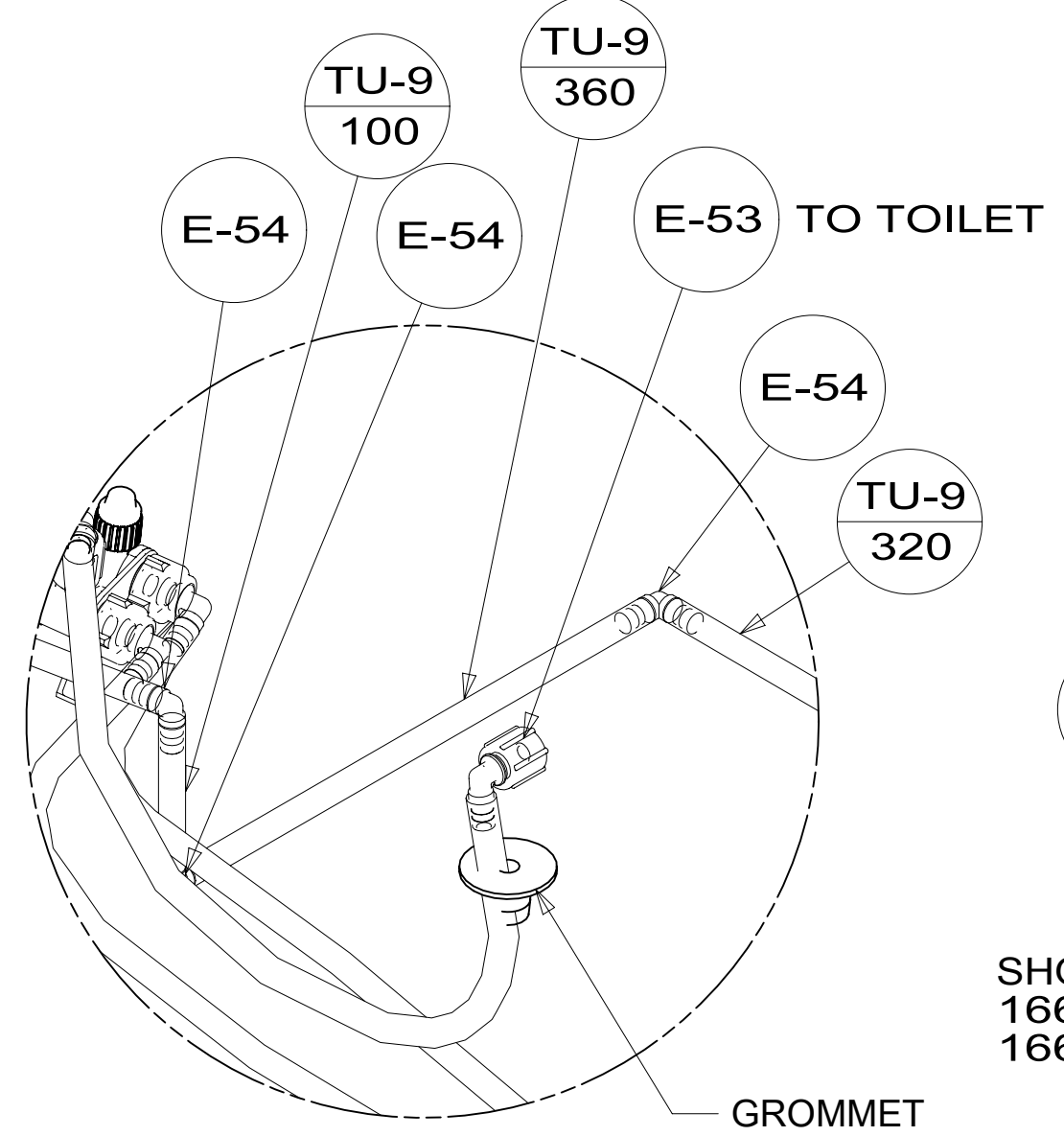


- CLAMP-CABLE 010495-04-000 (2)
- SCREW 000G67-10-12U (2)

DETAIL CF (SHOWN W/O FLOOR & SHOWER)



DETAIL CE (SHOWN W/O SHOWER-EXTERIOR)

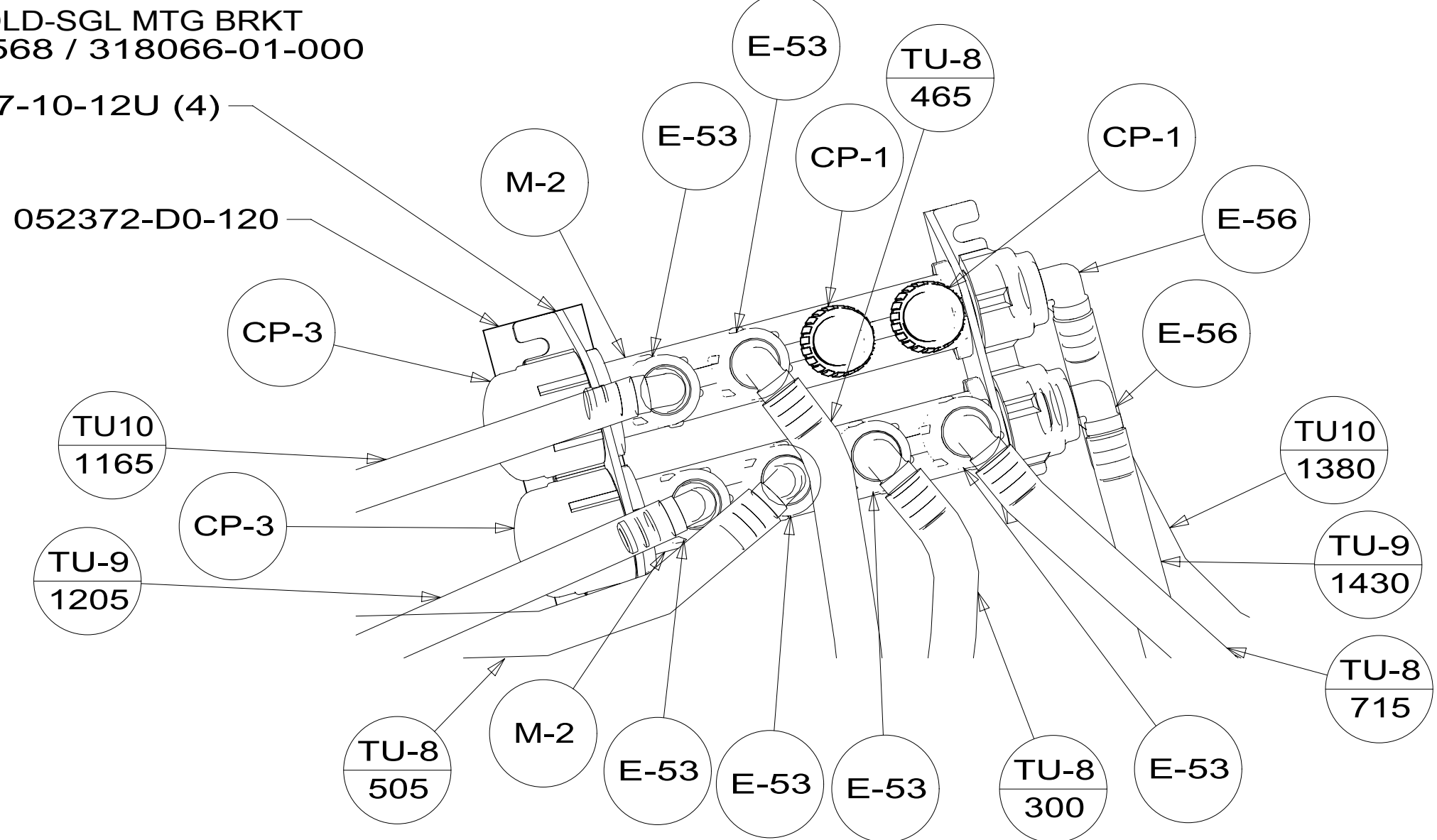


DETAIL CH (SHOWN W/O FLOOR & CABINETS)

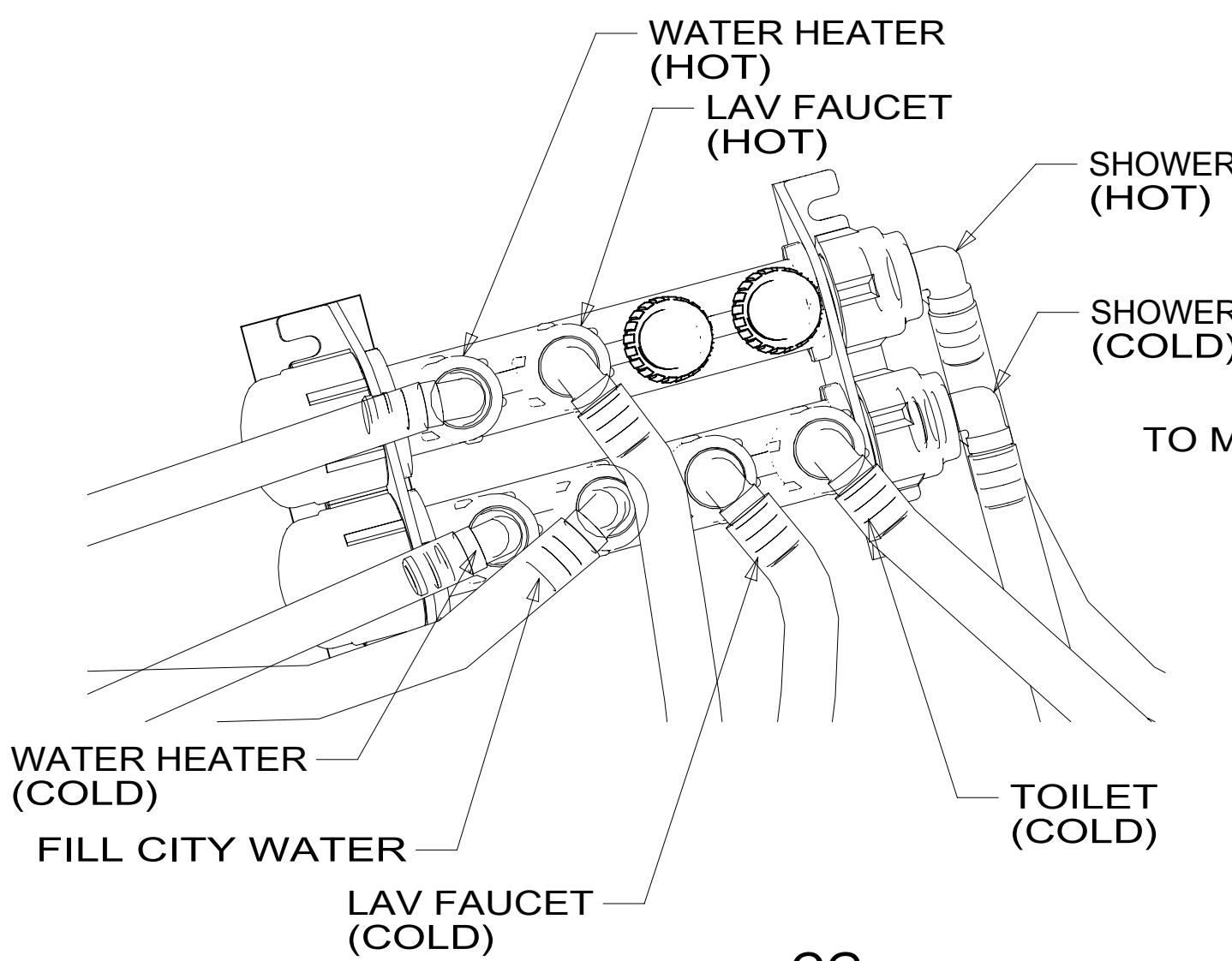
TO REFRIGERATOR

- CLAMP 010497-01-000
- SCREW 000G67-10-12U

- MANIFOLD-SGL MTG BRKT 00003568 / 318066-01-000
- SCREW 000G67-10-12U (4)



VIEW CG (SHOWN W/O CABINETS & SINK)



VIEW CG (SHOWN W/O CABINETS & SINK)

SECTION CC-CC

DESCRIPTION:		
<b>WATER SYSTEM INSTL</b>		
SHEET:	ITEM/PART NO:	REV
3 OF 3	000159337 / 32759401000	