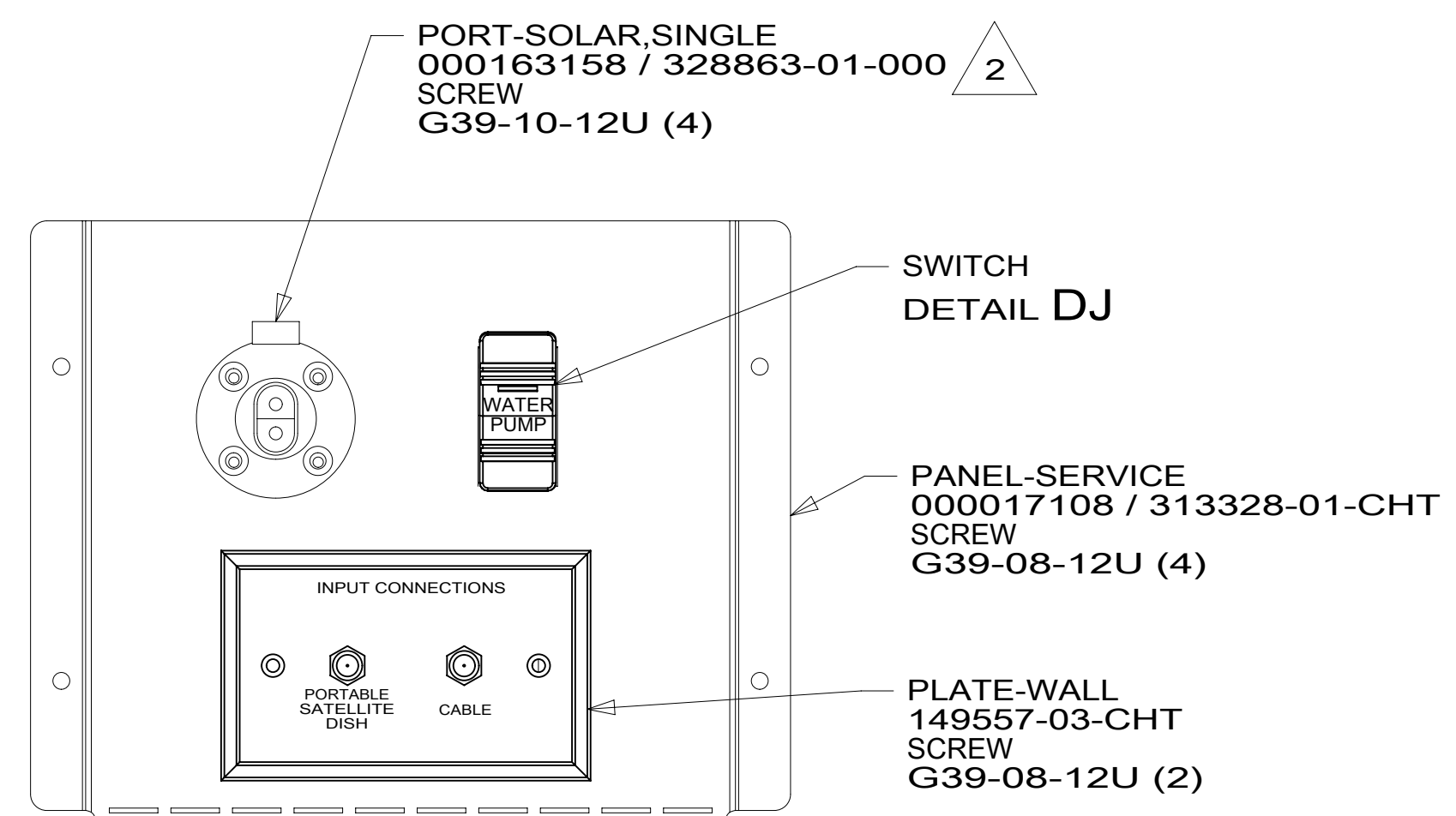


8 7 6 5 4 3 2 1



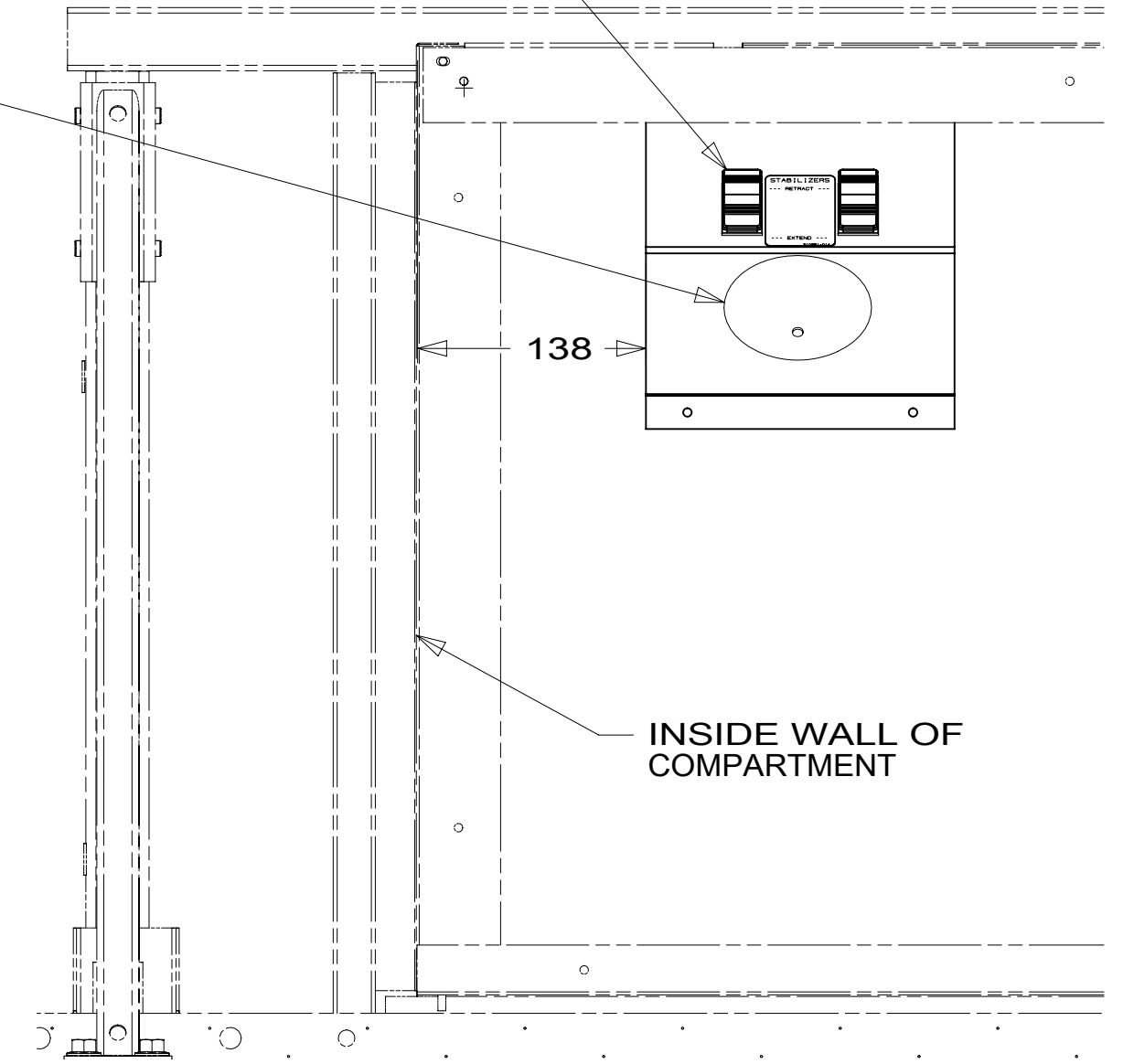
VIEW AA

64A PANEL-SWITCH  
000028367 / 316237-01-CHT  
SWITCH-ROCKER  
108357-06-000 (2)  
ACTUATOR  
108356-01-CHT (2)  
LABEL-STABILIZER  
000007799 / 310651-01-CHT

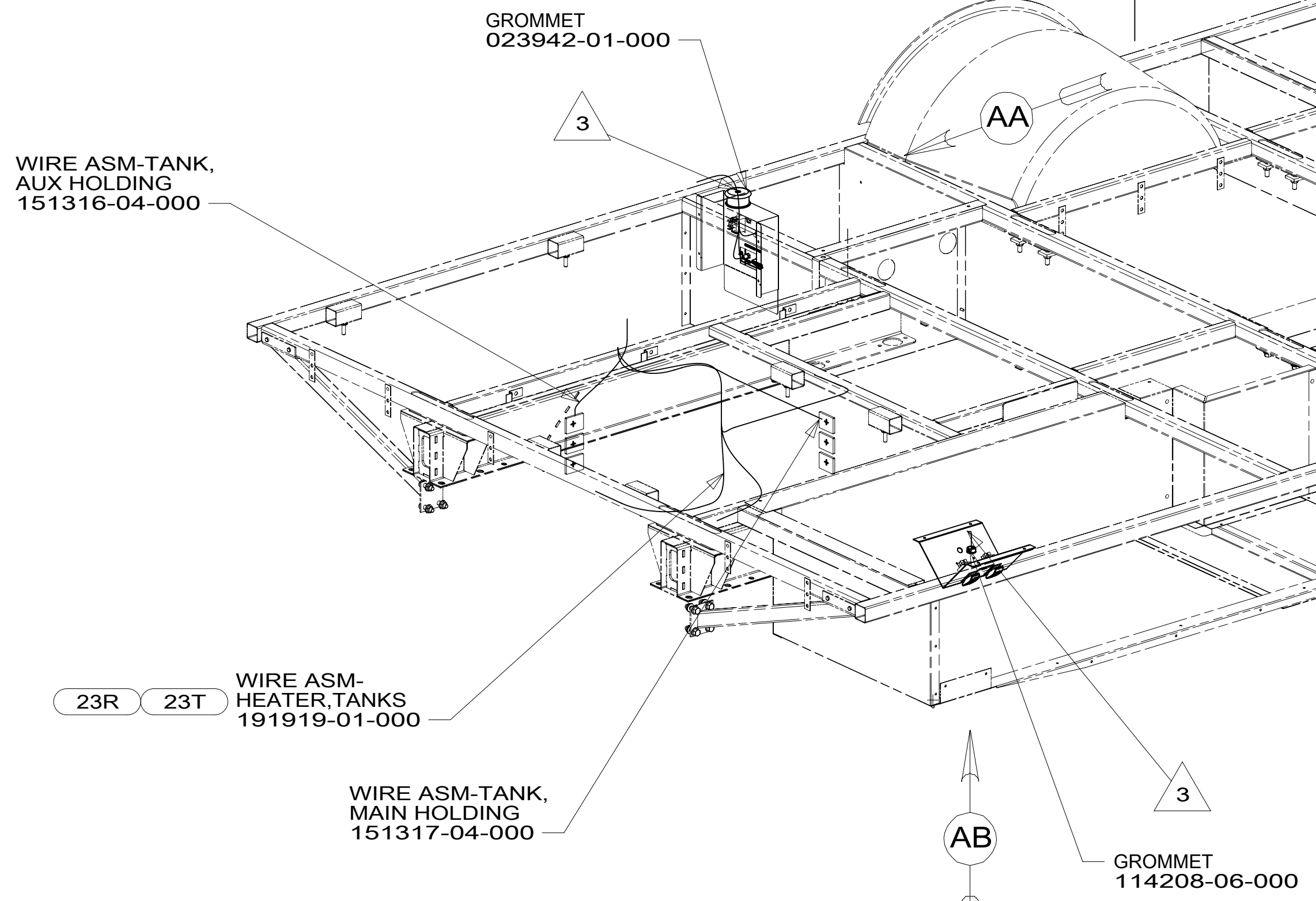
4 LIGHT-LED, ROUND W/SWITCH, 3.5 PLASTIC  
000166892 / 329927-01-CHT  
SCREW  
G39-06-12U (3)  
CONNECTOR  
58028-01-000 (2)

HARNESS-SLIDEOUT MOTOR  
191660-01-000

HARNESS-SLIDEOUT MOTOR  
191660-01-000

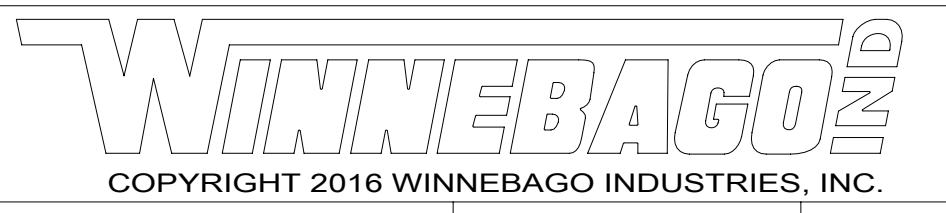


VIEW AB



- 60T JACKS-STABILIZING, ELECT W/O
- 64A JACKS-STABILIZING, ELECTRIC
- 23T DRAINAGE SYSTEM-HEATED
- 23R DRAINAGE SYSTEM/HEAT-PREWIRED
- 265 CODES/STANDARDS-CSA/CMVSS
- 1B1 CODES/STANDARDS USA

1B1 265



DSNR:	ALL DIMENSIONS ARE IN MILLIMETERS	
DFFR:		
UNSPECIFIED TOLERANCES:	MATERIAL:	
WHOLE DIM (X) :	3	
ONE-PLACE (X.X) :	1.5	
TWO-PLACE (X.XX) :	0.50	
ANGLE :	1°	
REFER TO ES0018 FOR FASTENER TIGHTENING GUIDELINES	WEIGHT: (LBS)	FIRST USED:
		18 423A

DESCRIPTION:  
**WIRING INSTL-BODY, 12V**

SHEET:	ITEM/PART NO.:	REV:
1 OF 6	000159008 / 32750901000	

FOR ELECTRICAL TORQUE SPECIFICATIONS SEE DWG NO. 128783-01-000

FOR ELECTRICAL CALLOUTS SEE DWG NO. 121339-01-000

- 4 WITH 60AMP TO BE MOUNTED ON UNDERSIDE OF FLOOR.
- 3 WIRE PASSES THROUGH FLOOR IN THIS AREA.
- 2 SPLICE YELLOW TO RED AND WHITE TO BLACK.

NOTES:  
1. AT MINIMUM ALL WIRES TO BE SUPPORTED AND SECURED PER CODE REQUIREMENTS. USE CLAMP 10495 OR 10497 OR WIRE TIE 8343 OR 108046 AND SCREW G67-XX-XXX OR G56-XX-XXX AS APPROPRIATE FOR INSTALLATION.

8 7 6 5 4 3 2 1

8 7 6 5 4 3 2 1

D

D

C

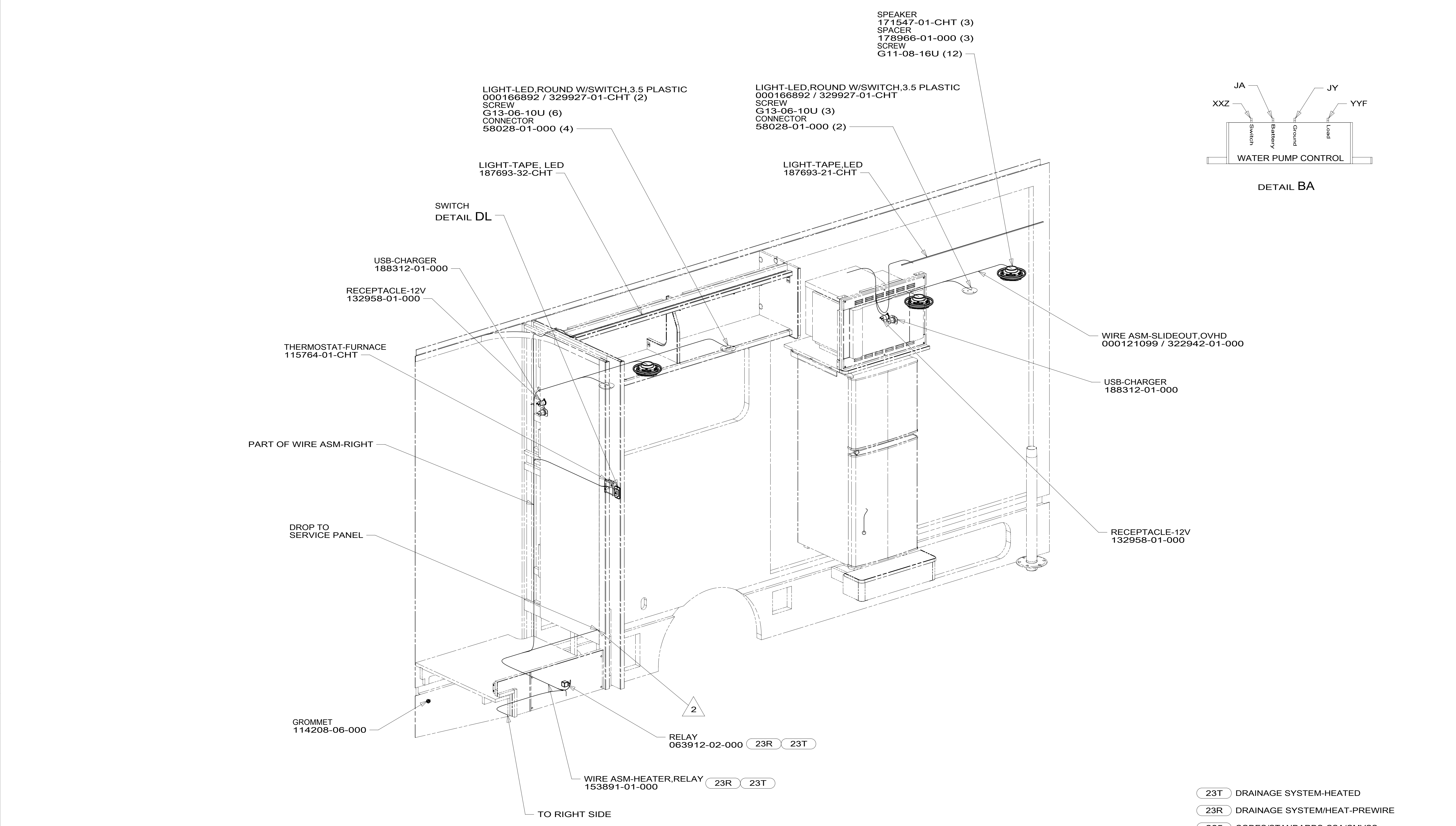
C

B

B

A

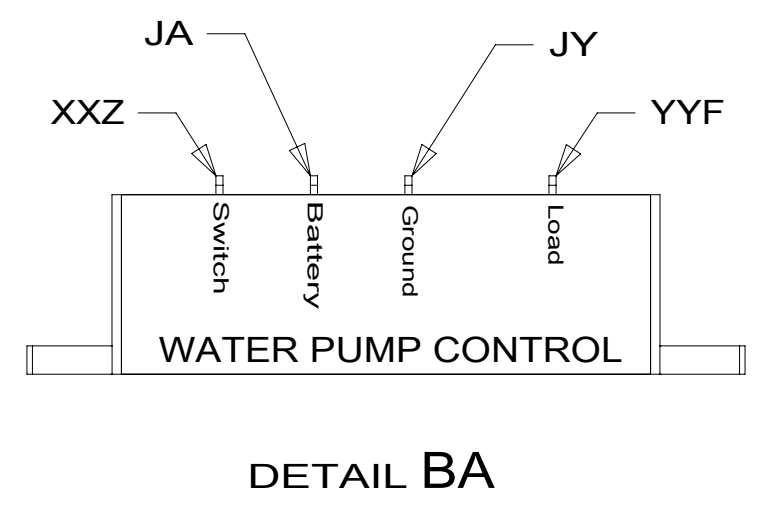
A



SPEAKER  
171547-01-CHT (3)  
SPACER  
178966-01-000 (3)  
SCREW  
G11-08-16U (12)

LIGHT-LED,ROUND W/SWITCH,3.5 PLASTIC  
000166892 / 329927-01-CHT (2)  
SCREW  
G13-06-10U (6)  
CONNECTOR  
58028-01-000 (4)

LIGHT-LED,ROUND W/SWITCH,3.5 PLASTIC  
000166892 / 329927-01-CHT  
SCREW  
G13-06-10U (3)  
CONNECTOR  
58028-01-000 (2)



USB-CHARGER  
188312-01-000  
RECEPTACLE-12V  
132958-01-000

THERMOSTAT-FURNACE  
115764-01-CHT

PART OF WIRE ASM-RIGHT

DROP TO  
SERVICE PANEL

GROMMET  
114208-06-000

RELAY  
063912-02-000 23R 23T

WIRE ASM-HEATER,RELAY  
153891-01-000 23R 23T

WIRE ASM-SLIDEOUT,OVHD  
000121099 / 322942-01-000

USB-CHARGER  
188312-01-000

RECEPTACLE-12V  
132958-01-000

2 WIRE PASSES THROUGH FLOOR IN THIS AREA.

1. AT MINIMUM ALL WIRES TO BE SUPPORTED AND SECURED PER CODE REQUIREMENTS. USE CLAMP 10495 OR 10497 OR WIRE TIE 8343 OR 108046 AND SCREW G67-XX-XXX OR G56-XX-XXX AS APPROPRIATE FOR INSTALLATION.

NOTES:

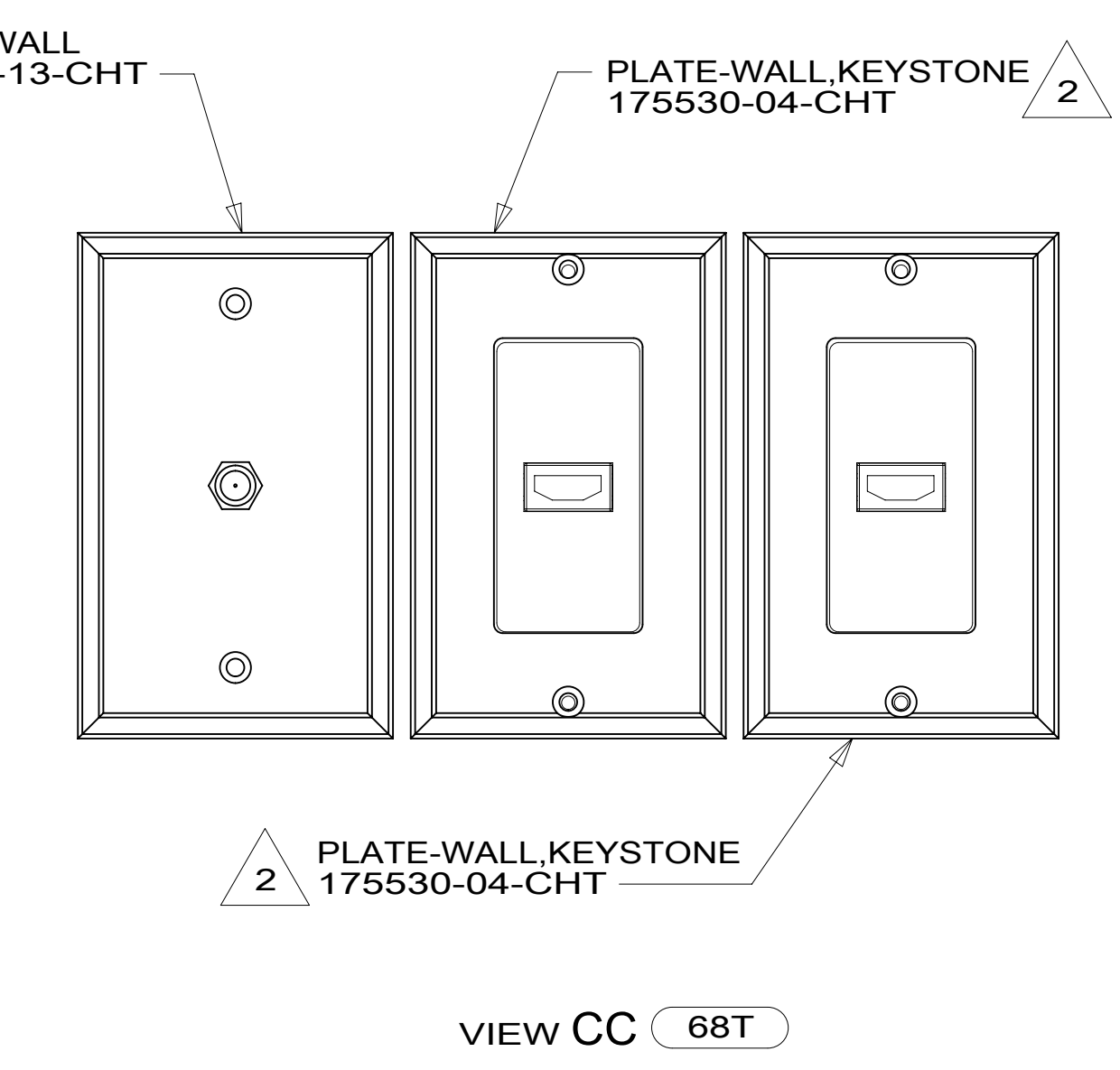
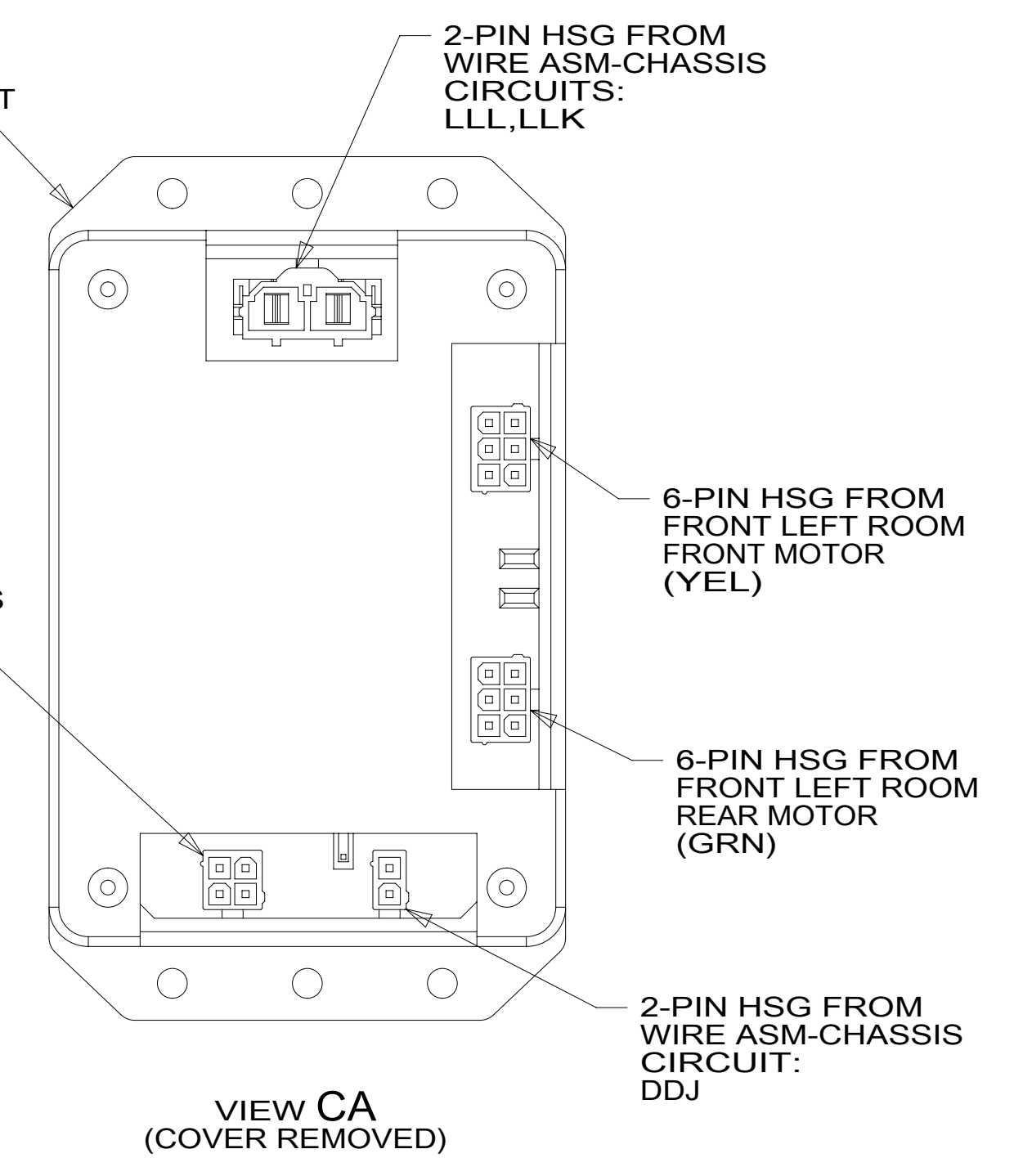
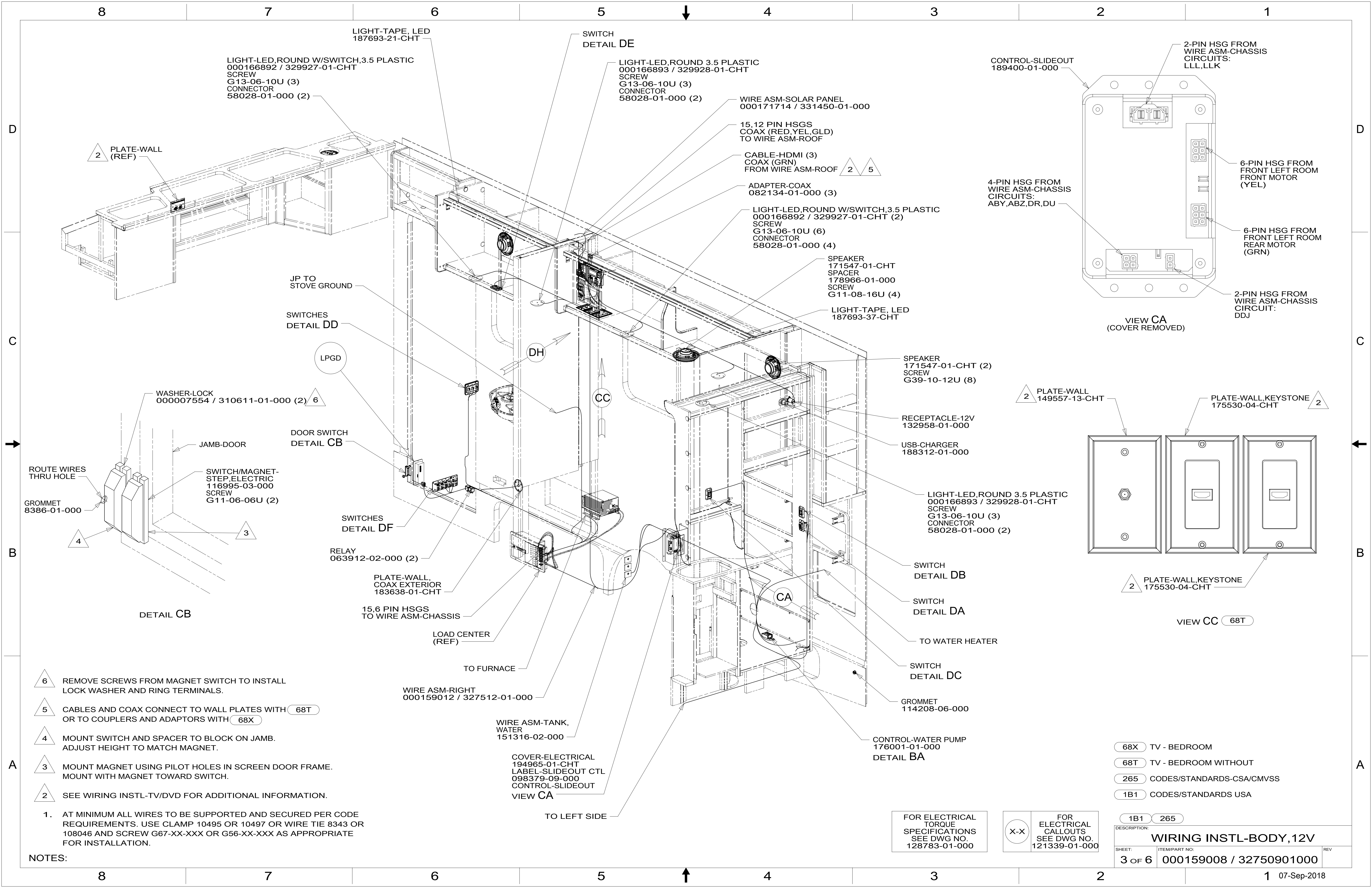
FOR ELECTRICAL TORQUE SPECIFICATIONS SEE DWG NO. 128783-01-000

FOR ELECTRICAL CALLOUTS SEE DWG NO. 121339-01-000

- 23T DRAINAGE SYSTEM-HEATED
- 23R DRAINAGE SYSTEM/HEAT-PREWIRE
- 265 CODES/STANDARDS-CSA/CMVSS
- 1B1 CODES/STANDARDS USA

DESCRIPTION:		1B1 265	
<b>WIRING INSTL-BODY, 12V</b>			
SHEET:	ITEM/PART NO.:	REV:	
2 OF 6	000159008 / 32750901000		

8 7 6 5 4 3 2 1 07-Sep-2018

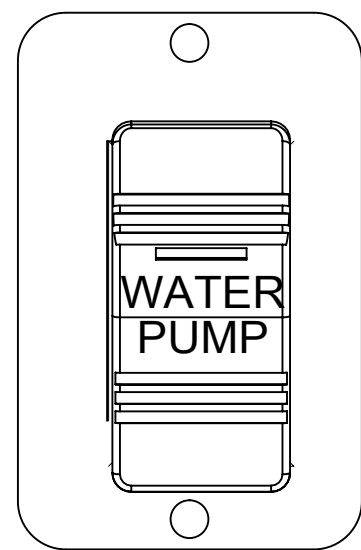


- NOTES:**
1. AT MINIMUM ALL WIRES TO BE SUPPORTED AND SECURED PER CODE REQUIREMENTS. USE CLAMP 10495 OR 10497 OR WIRE TIE 8343 OR 108046 AND SCREW G67-XX-XXX OR G56-XX-XXX AS APPROPRIATE FOR INSTALLATION.
  2. SEE WIRING INSTL-TV/DVD FOR ADDITIONAL INFORMATION.
  3. MOUNT MAGNET USING PILOT HOLES IN SCREEN DOOR FRAME. MOUNT WITH MAGNET TOWARD SWITCH.
  4. MOUNT SWITCH AND SPACER TO BLOCK ON JAMB. ADJUST HEIGHT TO MATCH MAGNET.
  5. CABLES AND COAX CONNECT TO WALL PLATES WITH (68T) OR TO COUPLERS AND ADAPTORS WITH (68X)
  6. REMOVE SCREWS FROM MAGNET SWITCH TO INSTALL LOCK WASHER AND RING TERMINALS.

FOR ELECTRICAL TORQUE SPECIFICATIONS SEE DWG NO. 128783-01-000

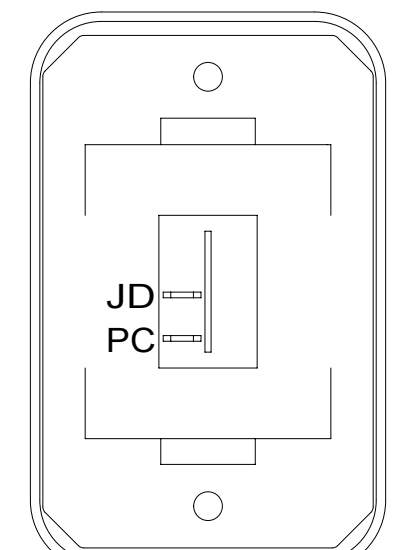
FOR ELECTRICAL CALLOUTS SEE DWG NO. 121339-01-000

(68X)	TV - BEDROOM
(68T)	TV - BEDROOM WITHOUT
(265)	CODES/STANDARDS-CSA/CMVSS
(1B1)	CODES/STANDARDS USA
(1B1)	(265)
DESCRIPTION: <b>WIRING INSTL-BODY, 12V</b>	
SHEET: 3 OF 6	ITEM/PART NO: 000159008 / 32750901000
REV 07-Sep-2018	



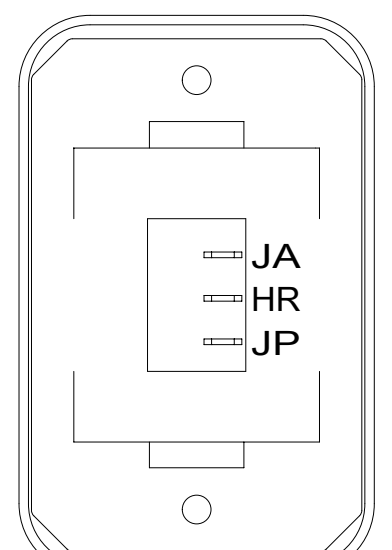
SWITCH-ROCKER  
108357-21-000  
ACTUATOR-SWITCH  
108356-23-CHT  
PLATE-SWITCH  
144363-02-CHT  
SCREW  
G11-06-10U (2)

DETAIL DA



SWITCH-ROCKER  
135740-01-CHT  
SWITCH-BASE  
135741-01-CHT  
SWITCH-BEZEL  
135742-01-CHT  
SCREW  
G11-08-08U (2)

DETAIL DE

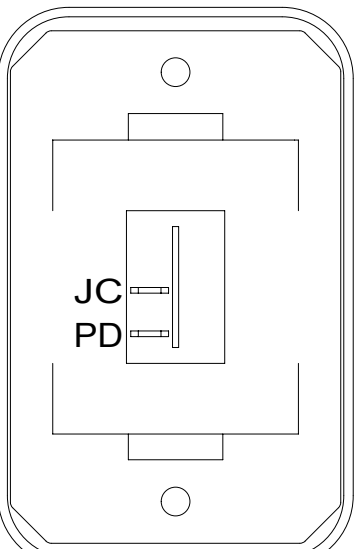


SWITCH-ROCKER  
135740-06-CHT  
SWITCH-BASE  
135741-01-CHT  
SWITCH-BEZEL  
135742-01-CHT  
SCREW  
G11-08-08U (2)



LABEL-SWITCH,  
HTR,HOLDING TK  
134563-01-CHT

DETAIL DG 23T 23R



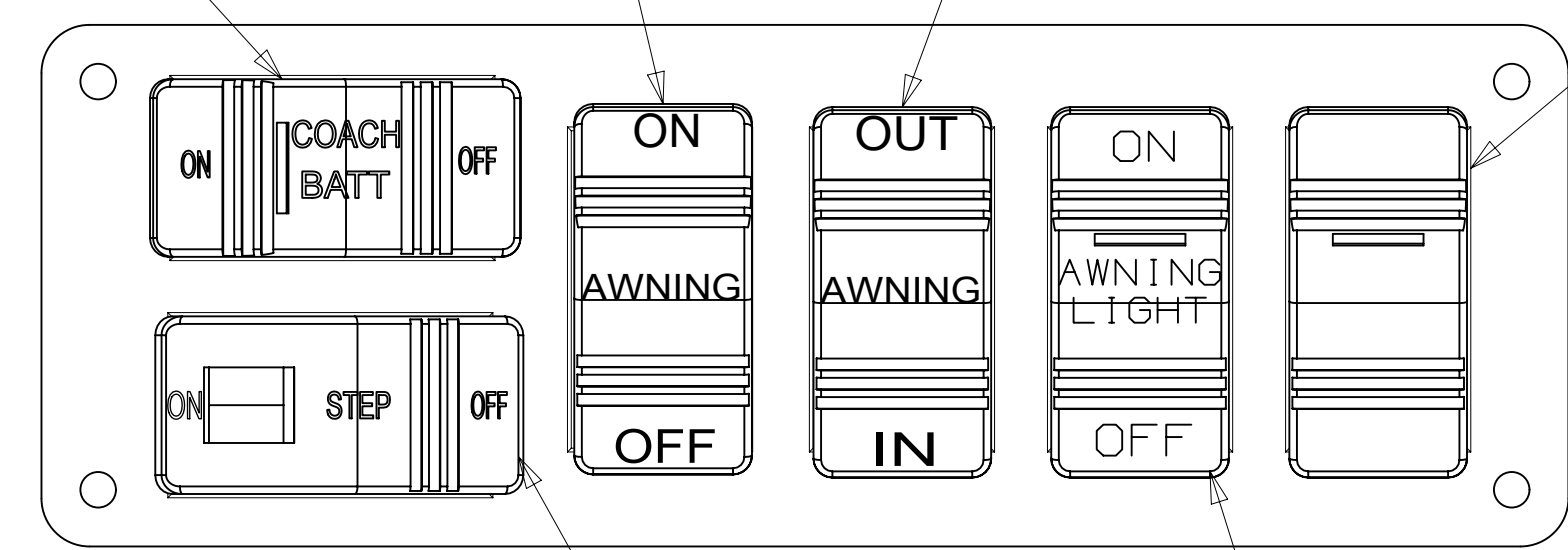
SWITCH-ROCKER  
135740-01-CHT  
SWITCH-BASE  
135741-01-CHT  
SWITCH-BEZEL  
135742-01-CHT  
SCREW  
G11-08-08U (2)

DETAIL DB

SWITCH-BATTERY  
108357-18-000  
ACTUATOR-SWITCH  
108356-19-CHT  
CIRCUITS LH,LG,  
LJ-1,JC,NC  
WIRE ASM-THERMISTOR  
186796-01-000

SWITCH-ROCKER  
108357-01-000  
ACTUATOR-SWITCH  
108356-22-CHT  
CIRCUITS  
FFD,FFT

SWITCH-ROCKER  
108357-06-000  
ACTUATOR-SWITCH  
108356-12-CHT  
CIRCUITS FFN,FFP,FFR

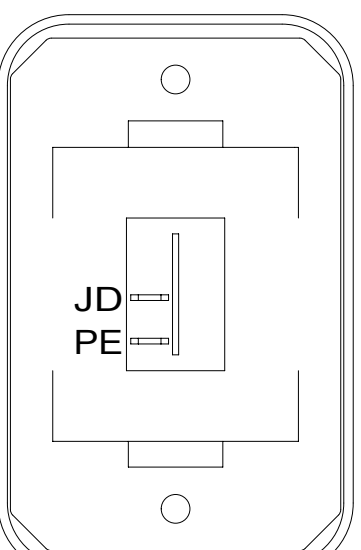


SWITCH-ROCKER  
108357-14-000  
ACTUATOR-SWITCH  
108356-03-000  
CIRCUITS AES,AET,NC

PLATE-SWITCH  
00022055 / 314395-01-CHT  
SCREW  
G11-06-10U (4)

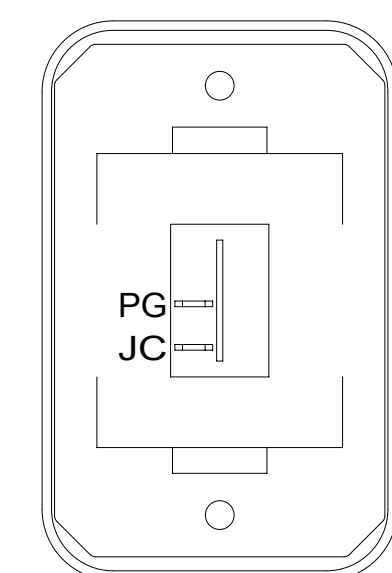
SWITCH-ROCKER  
108357-19-000  
CIRCUITS ER,ES

SWITCH-ROCKER  
108357-14-000  
ACTUATOR-SWITCH  
108356-28-CHT  
CIRCUITS RS,ZZK,NC



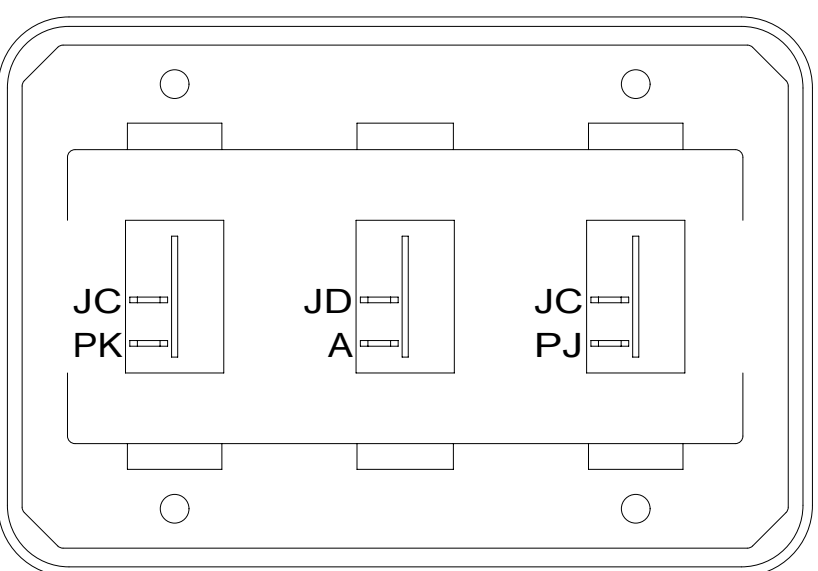
SWITCH-ROCKER  
135740-01-CHT  
SWITCH-BASE  
135741-01-CHT  
SWITCH-BEZEL  
135742-01-CHT  
SCREW  
G11-08-08U (2)

DETAIL DC



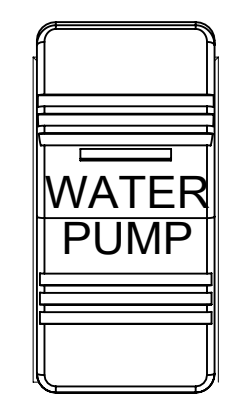
SWITCH-ROCKER  
135740-01-CHT  
SWITCH-BASE  
135741-01-CHT  
SWITCH-BEZEL  
135742-01-CHT  
SCREW  
G11-08-08U (2)

DETAIL DL



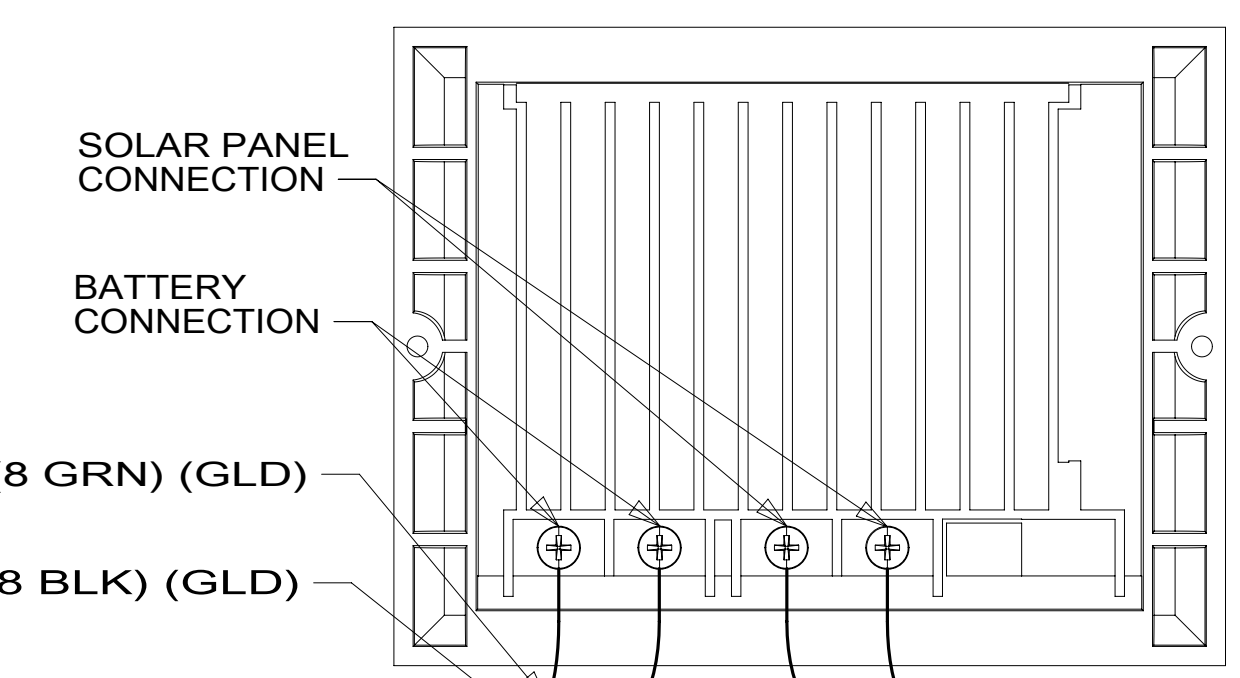
SWITCH-ROCKER  
135740-01-CHT (3)  
SWITCH-BASE  
135741-03-CHT  
SWITCH-BEZEL  
135742-03-CHT  
SCREW  
G11-08-08U (4)

DETAIL DD



DETAIL DJ

SWITCH-ROCKER  
108357-21-000  
ACTUATOR-SWITCH  
108356-23-CHT



SOLAR PANEL CONNECTION

BATTERY CONNECTION

(8 GRN) (GLD)

(8 BLK) (GLD)

(8 GRN) (YEL)

(8 BLK) (YEL)

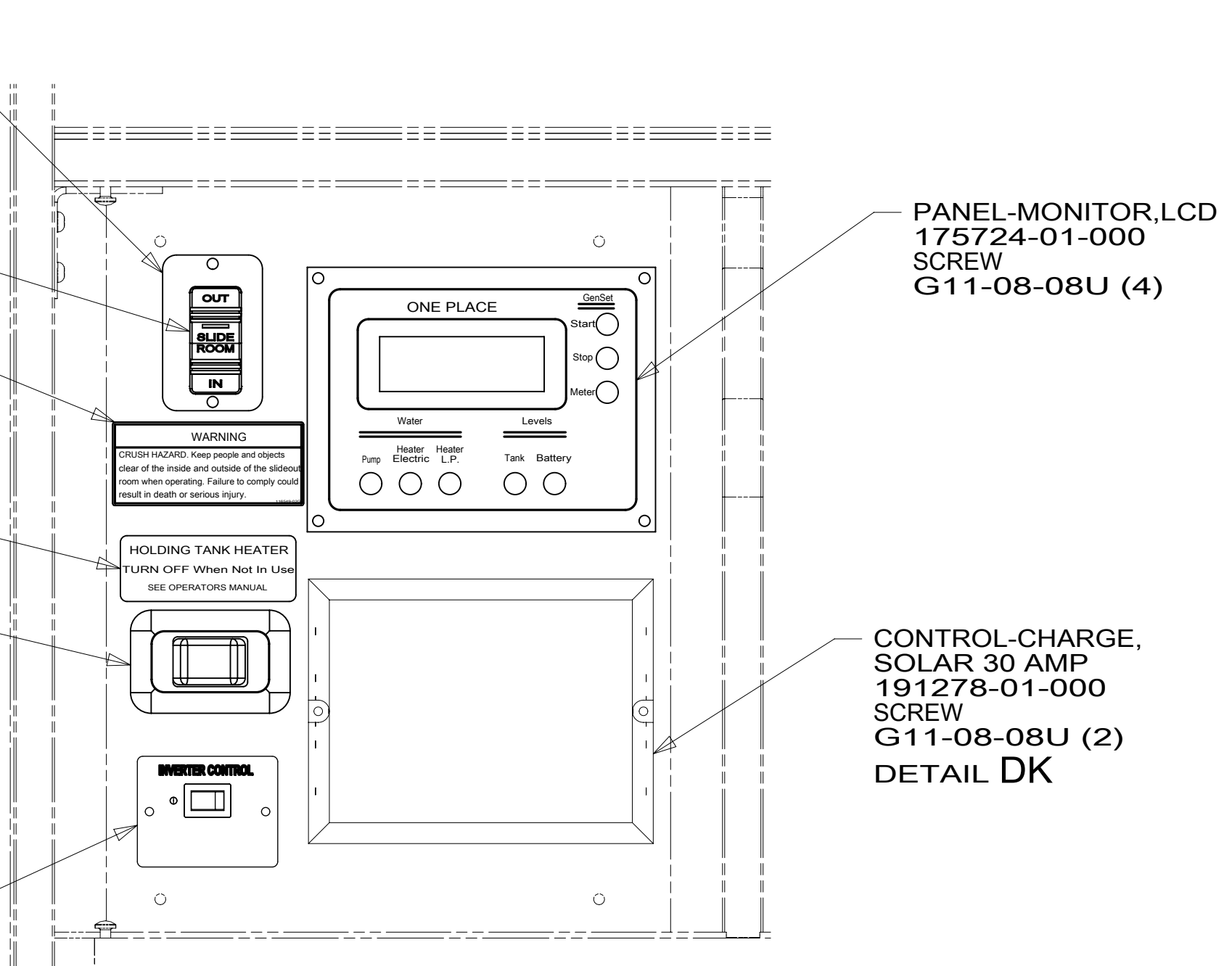
1 WIRE ASM-SOLAR CONTROLLER

WIRE ASM-SOLAR PANEL

DETAIL DK

FOR ELECTRICAL TORQUE SPECIFICATIONS SEE DWG NO. 128783-01-000

FOR ELECTRICAL CALLOUTS SEE DWG NO. 121339-01-000



VIEW DH

PLATE-SWITCH  
144363-02-CHT

SWITCH-ROCKER  
108357-18-000  
ACTUATOR-SWITCH  
108356-31-CHT  
CIRCUITS  
HHH,DT,HHG

LABEL-WARNING,  
SLIDEOUT  
116549-02-000

LABEL-SWITCH,  
HTR,HOLDING TK  
(REF)

SWITCH  
DETAIL DG

REMOTE PANEL-INVERTER  
000037772 / 318694-01-CHT  
SCREW  
G11-06-08U (2)

PANEL-MONITOR,LCD  
175724-01-000  
SCREW  
G11-08-08U (4)

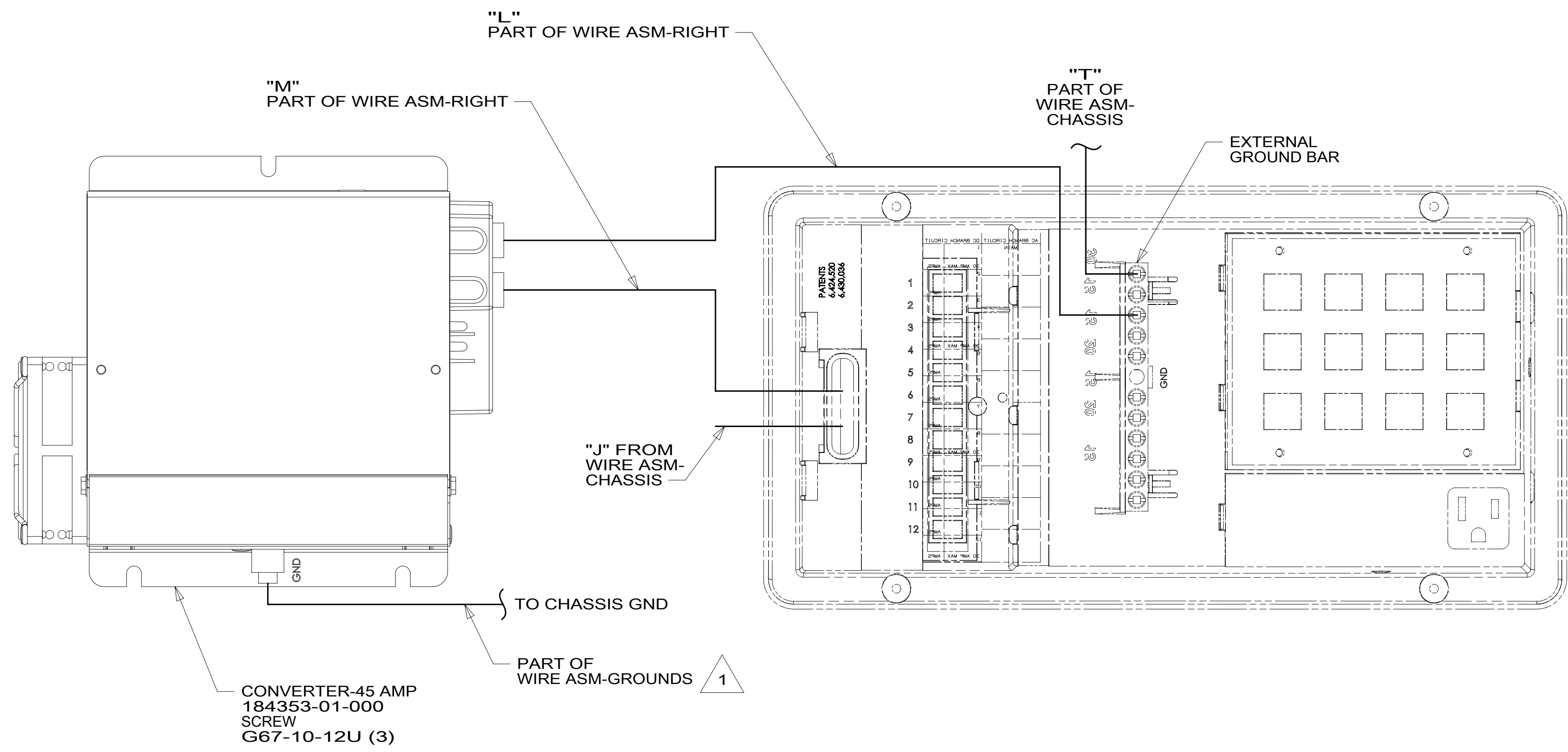
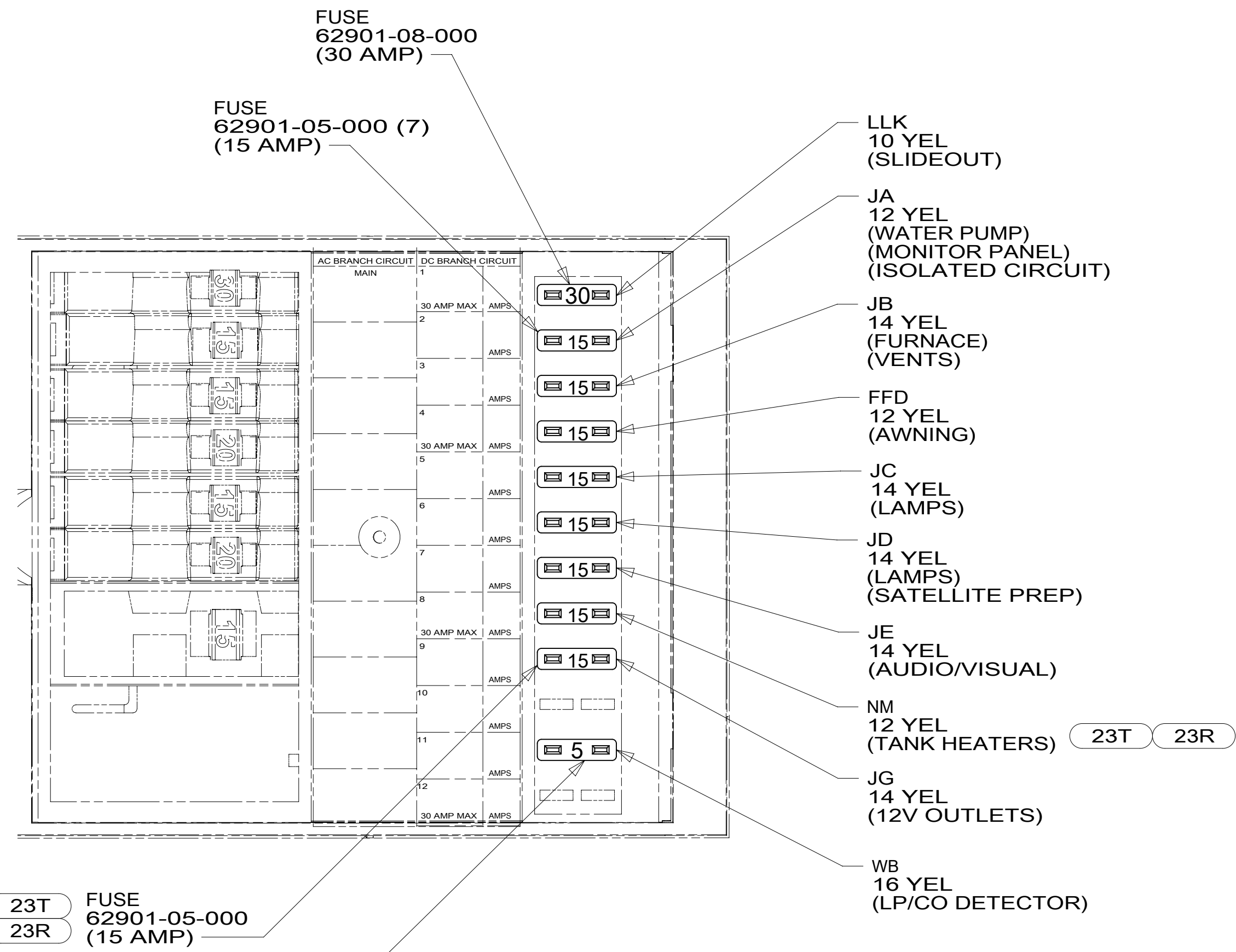
CONTROL-CHARGE,  
SOLAR 30 AMP  
191278-01-000  
SCREW  
G11-08-08U (2)  
DETAIL DK

NOTES:  
1 SEE WIRING INSTL-CHASSIS FOR ADDITIONAL INFORMATION.

- 23R DRAINAGE SYSTEM/HEAT-PREWIRE
- 23T DRAINAGE SYSTEM-HEATED
- 265 CODES/STANDARDS-CSA/CMVSS
- 1B1 CODES/STANDARDS USA

DESCRIPTION:	1B1 265	
WIRING INSTL-BODY, 12V		
SHEET:	ITEM/PART NO:	REV
4 OF 6	000159008 / 32750901000	

8 7 6 5 4 3 2 1



D

C

B

A

D

C

B

A

1 SEE WIRING INSTL-CHASSIS FOR ADDITIONAL INFORMATION.

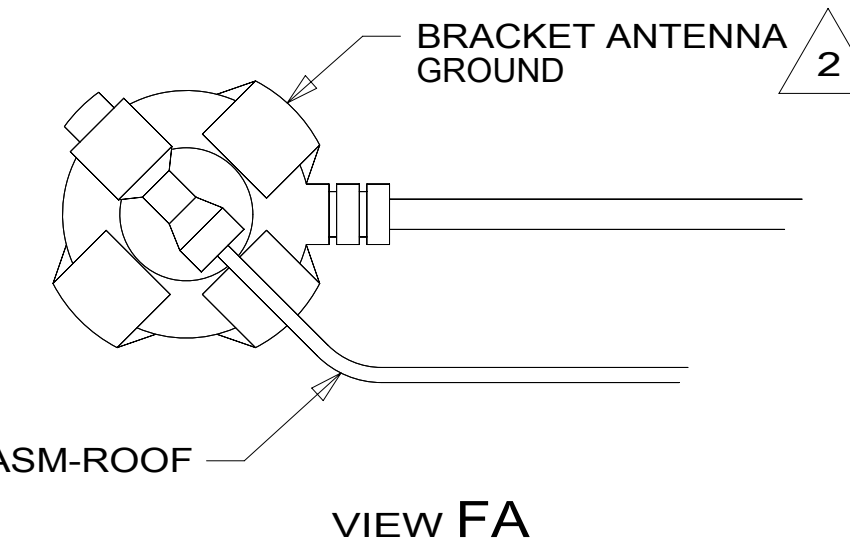
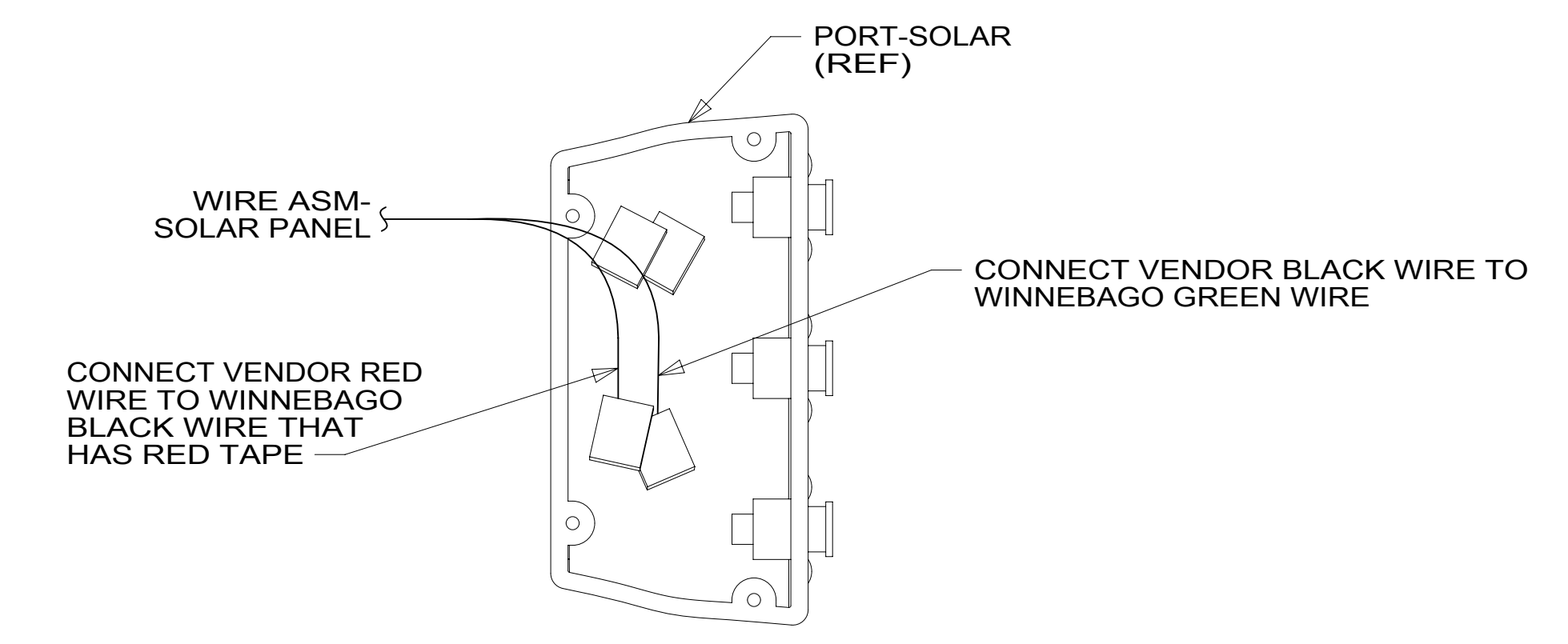
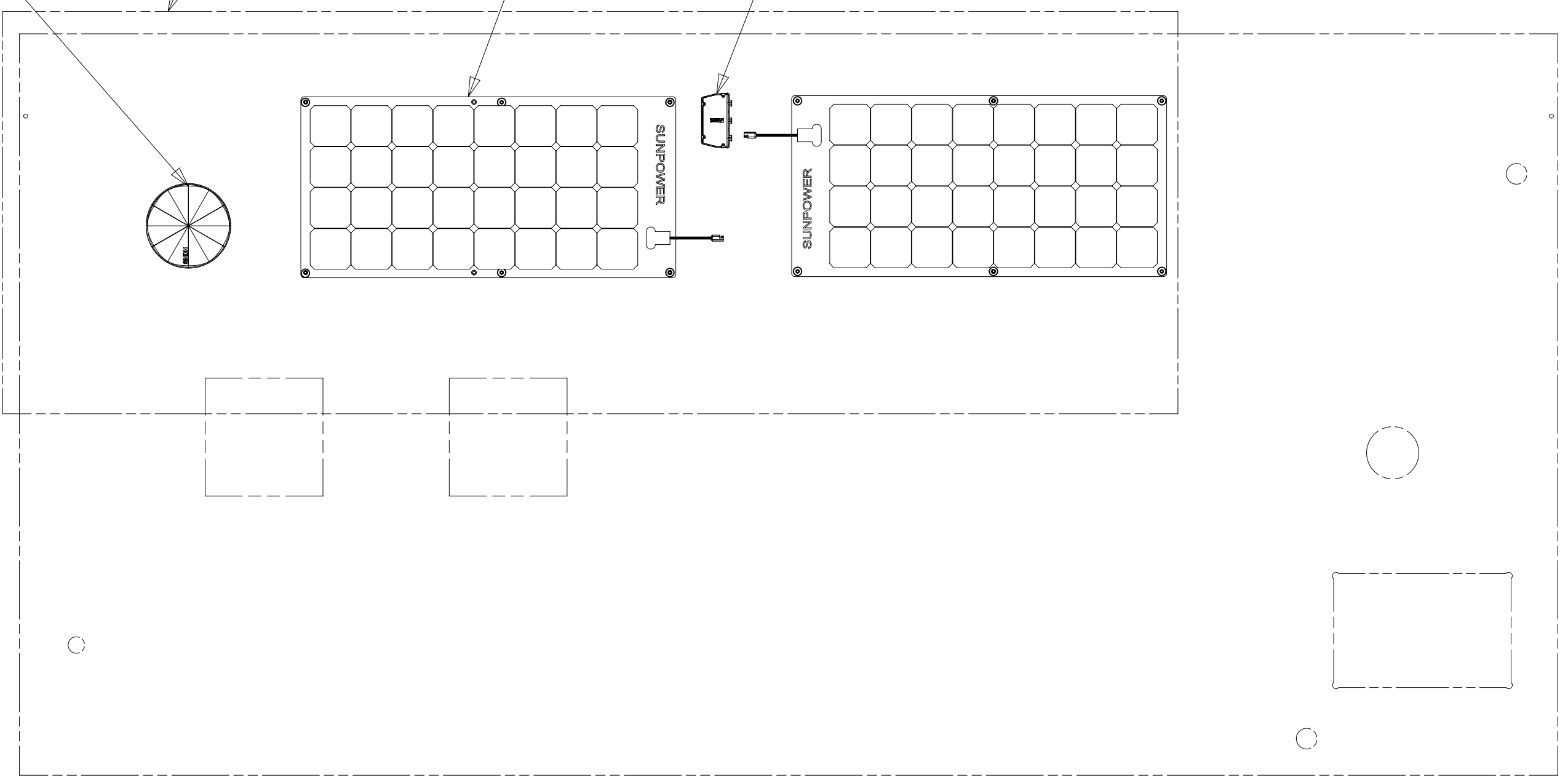
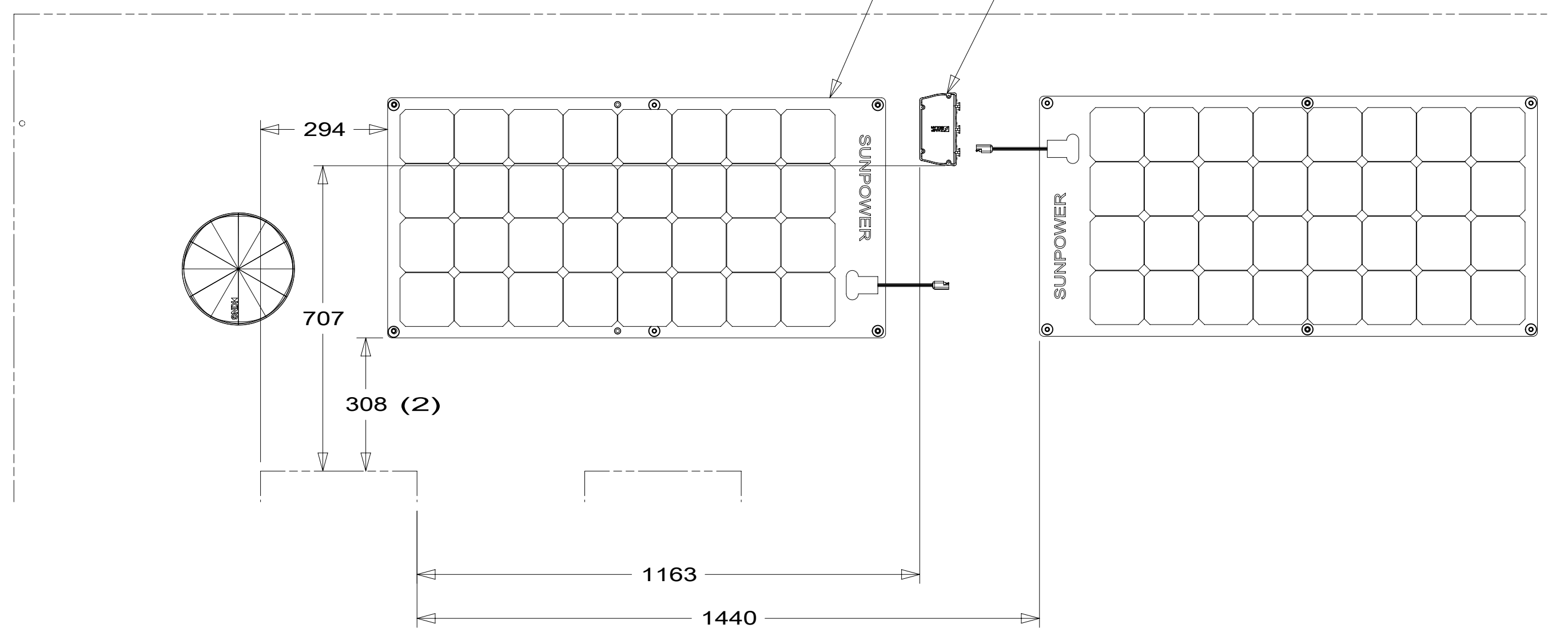
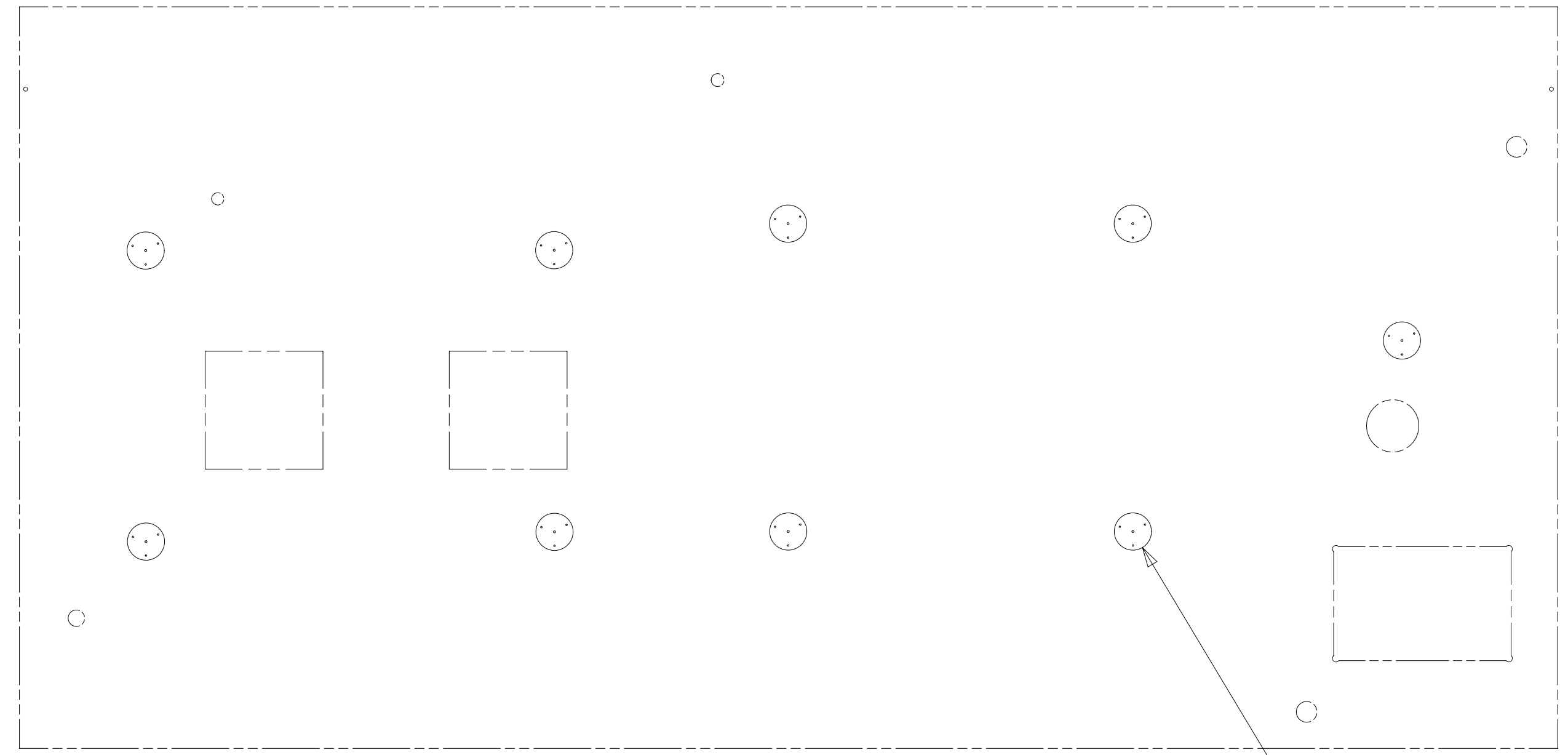
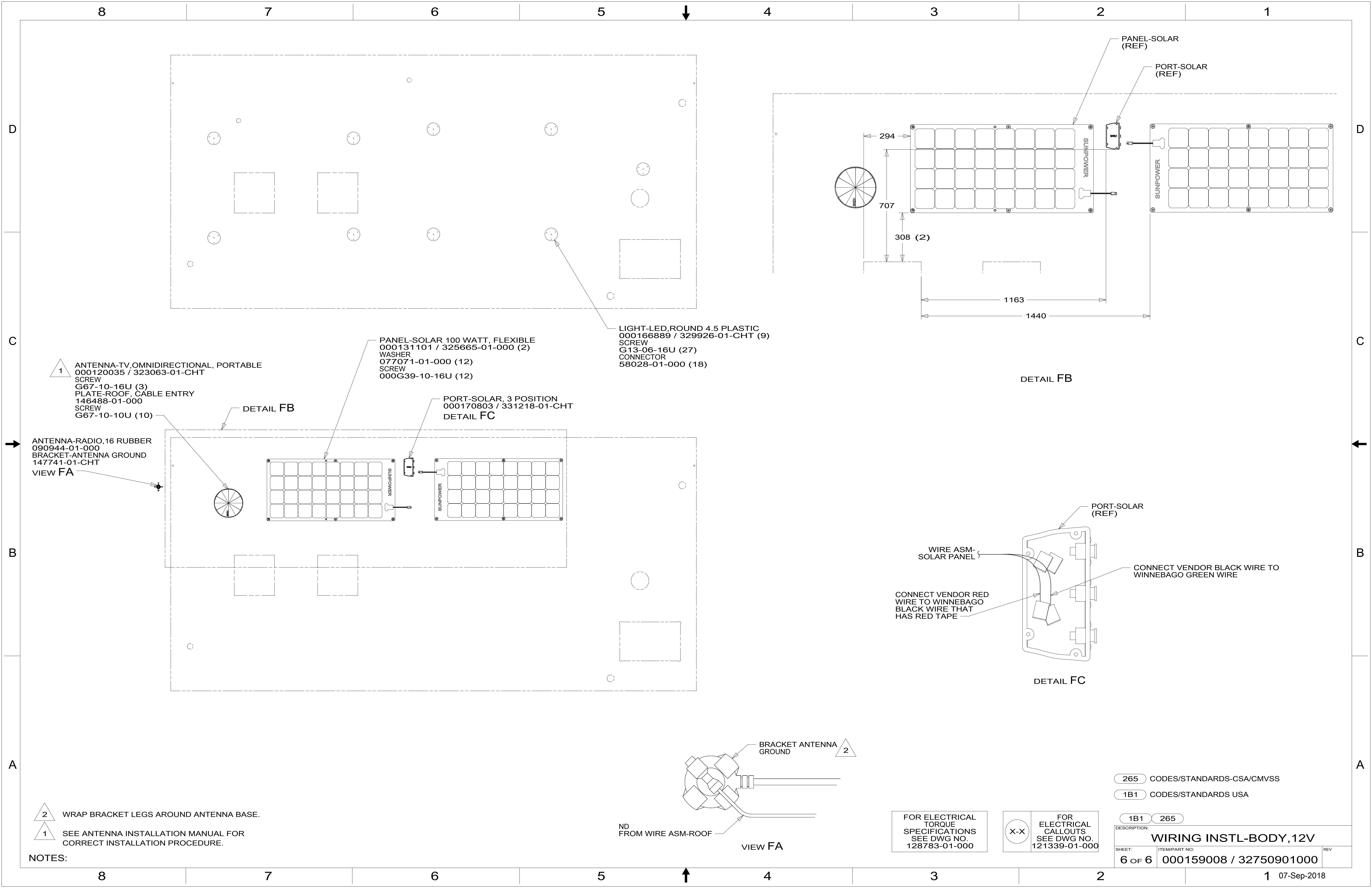
FOR ELECTRICAL TORQUE SPECIFICATIONS SEE DWG NO. 128783-01-000

FOR ELECTRICAL CALLOUTS SEE DWG NO. 121339-01-000

- 23R DRAINAGE SYSTEM/HEAT-PREWIRE
- 23T DRAINAGE SYSTEM-HEATED
- 265 CODES/STANDARDS-CSA/CMVSS
- 1B1 CODES/STANDARDS USA

DESCRIPTION: 1B1 265		
<b>WIRING INSTL-BODY, 12V</b>		
SHEET: 5 OF 6	ITEM/PART NO: 000159008 / 32750901000	REV:

8 7 6 5 4 3 2 1 07-Sep-2018



- 1 ANTENNA-TV, OMNIDIRECTIONAL, PORTABLE  
000120035 / 323063-01-CHT  
SCREW  
G67-10-16U (3)  
PLATE-ROOF, CABLE ENTRY  
146488-01-000  
SCREW  
G67-10-10U (10)

- PANEL-SOLAR 100 WATT, FLEXIBLE  
000131101 / 325665-01-000 (2)  
WASHER  
077071-01-000 (12)  
SCREW  
000G39-10-16U (12)

- LIGHT-LED, ROUND 4.5 PLASTIC  
000166889 / 329926-01-CHT (9)  
SCREW  
G13-06-16U (27)  
CONNECTOR  
58028-01-000 (18)

- PORT-SOLAR, 3 POSITION  
000170803 / 331218-01-CHT  
DETAIL FC

- ANTENNA-RADIO, 16 RUBBER  
090944-01-000  
BRACKET-ANTENNA GROUND  
147741-01-CHT  
VIEW FA

- 2 WRAP BRACKET LEGS AROUND ANTENNA BASE.
- 1 SEE ANTENNA INSTALLATION MANUAL FOR CORRECT INSTALLATION PROCEDURE.

FOR ELECTRICAL TORQUE SPECIFICATIONS SEE DWG NO. 128783-01-000

FOR ELECTRICAL CALLOUTS SEE DWG NO. 121339-01-000

- 265 CODES/STANDARDS-CSA/CMVSS
- 1B1 CODES/STANDARDS USA

DESCRIPTION:		1B1 265	
<b>WIRING INSTL-BODY, 12V</b>			
SHEET:	ITEM/PART NO.:	REV	
6 OF 6	000159008 / 32750901000		