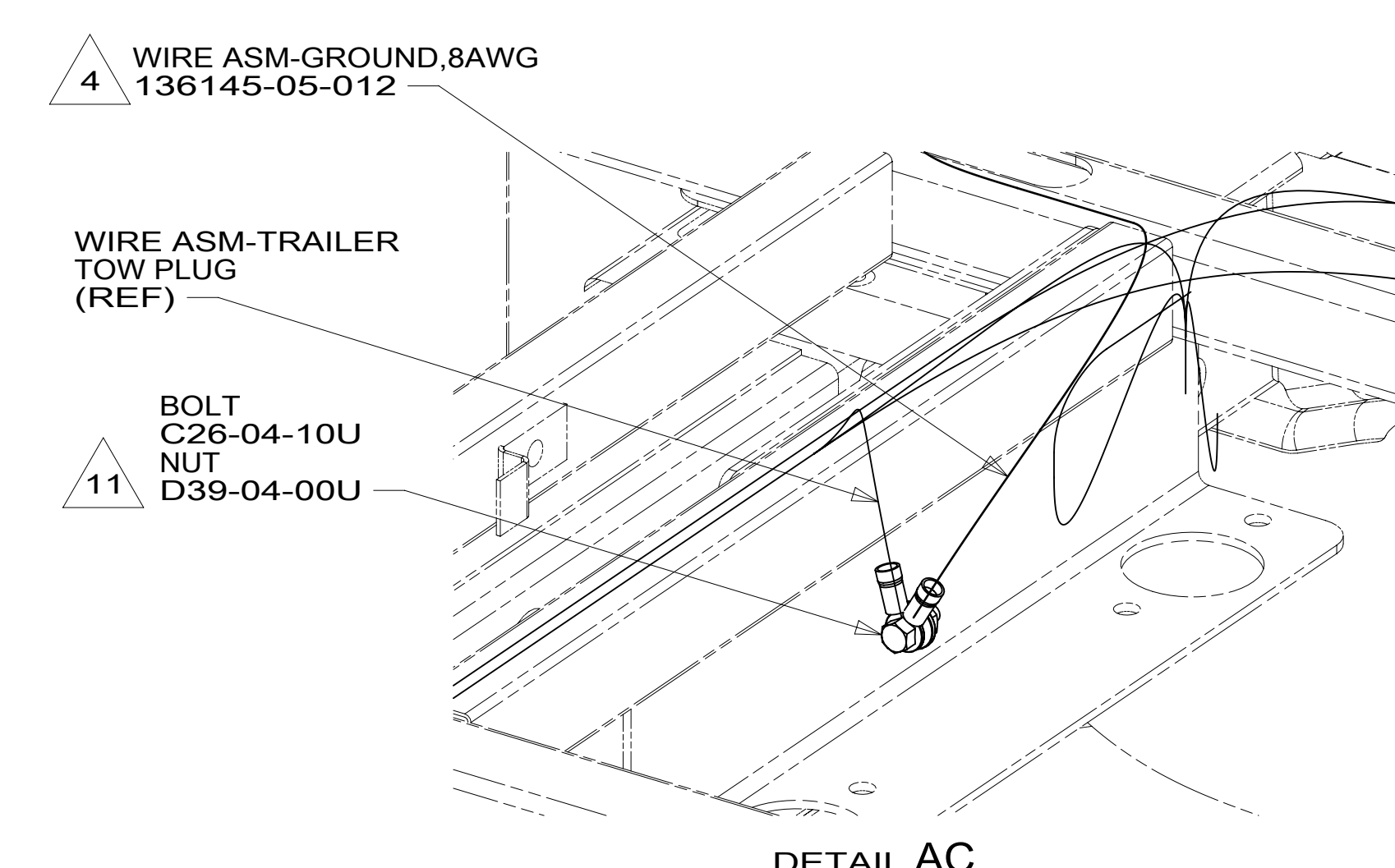
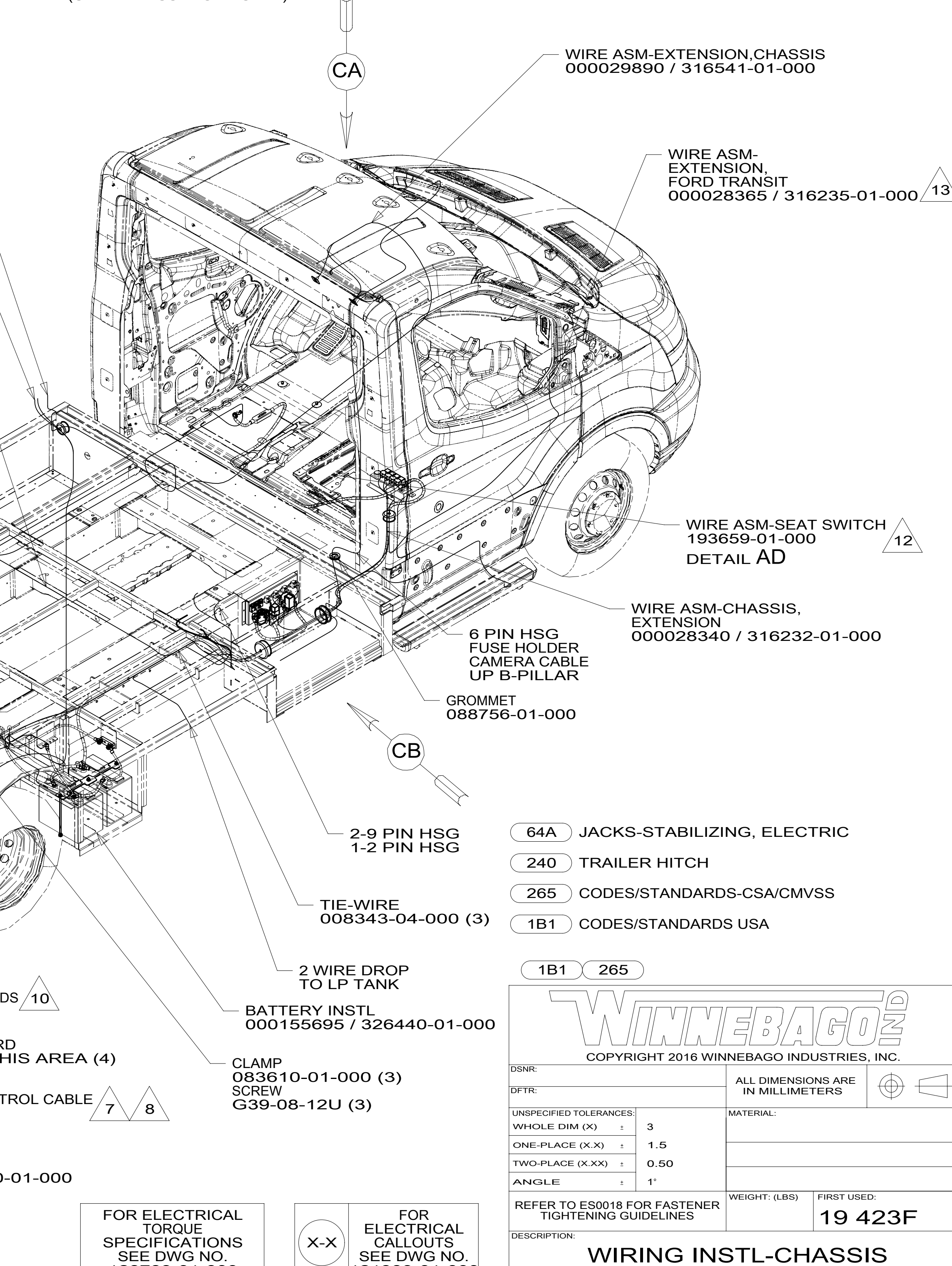
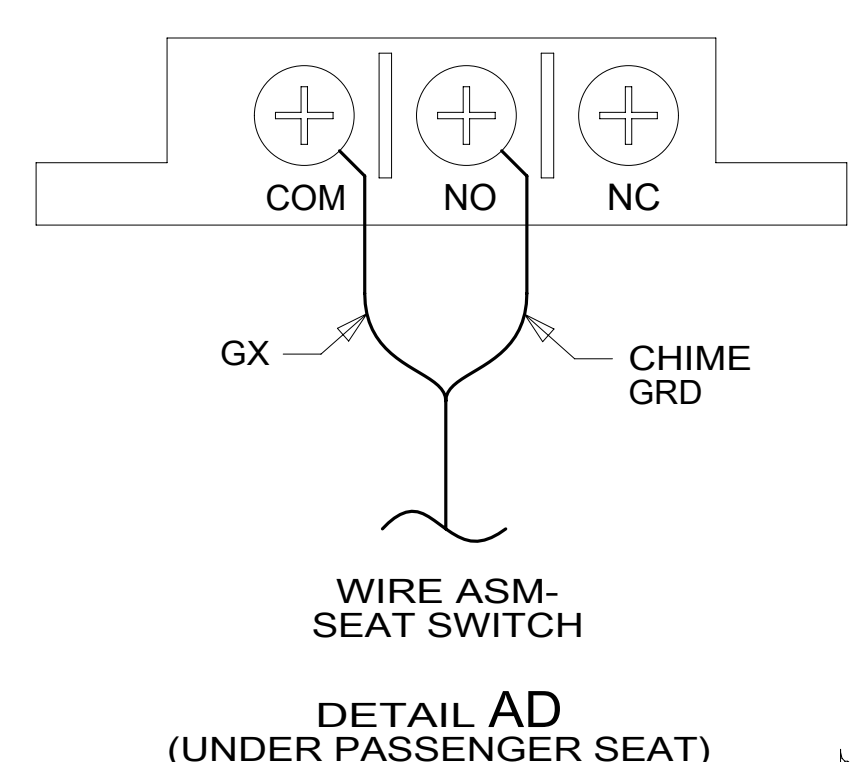
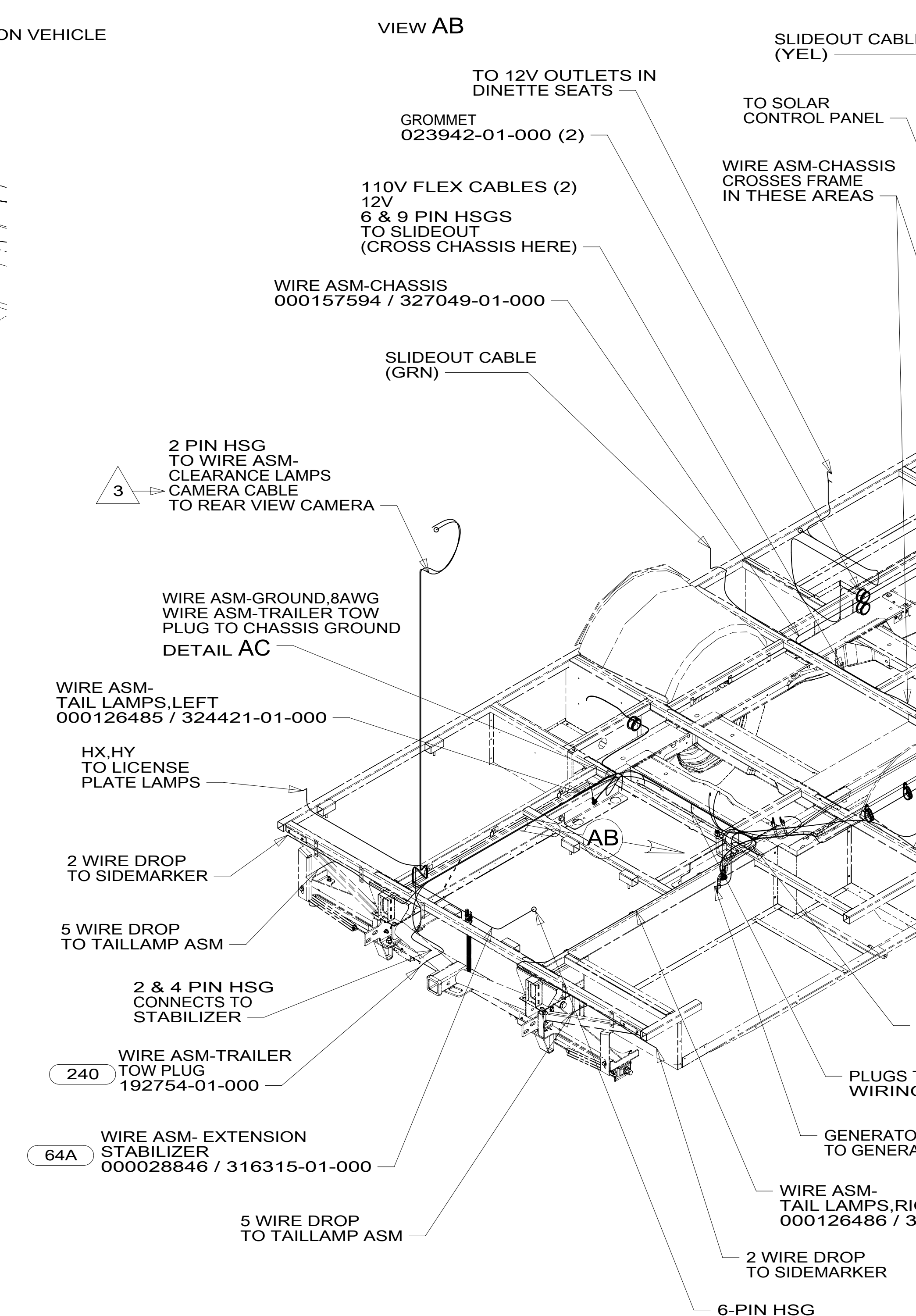
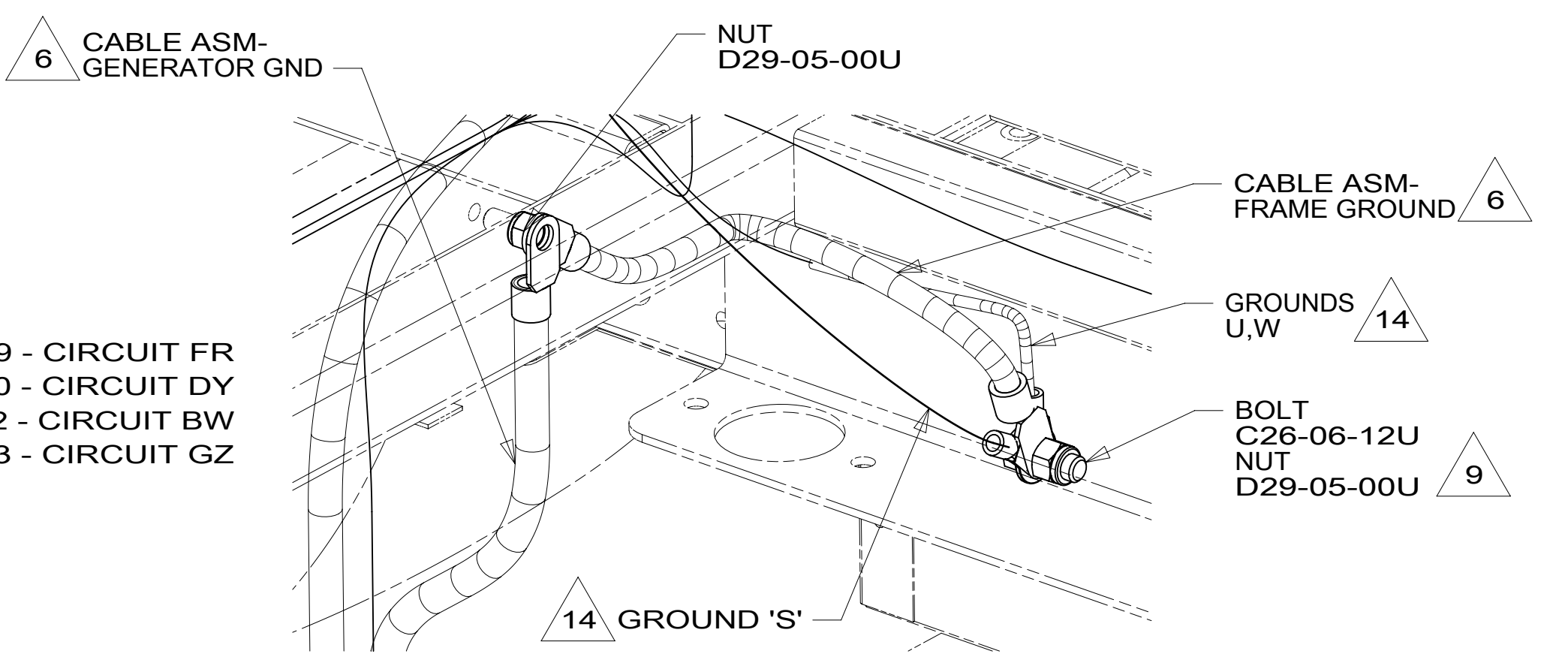


SOCKET 29 - CIRCUIT FR
 SOCKET 30 - CIRCUIT DY
 SOCKET 32 - CIRCUIT BW
 SOCKET 43 - CIRCUIT GZ



- NOTES:
1. SECURE CONDUIT 41953, TAB AS REQUIRED, OVER ALL WIRES IN CONTACT WITH SHARP EDGES.
 2. USE WIRE TIES 8343-04-000 AND 116673-02-000 APPROXIMATELY 600MM ON CENTER UNLESS OTHERWISE SPECIFIED.
 3. SEE RADIO/MONITOR INSTL FOR ADDITIONAL INFORMATION.
 4. SEE ATS ASM FOR ADDITIONAL INFORMATION.
 5. WIRING IS PART OF WIRE ASM-POWER MIRRORS.
 6. SEE BATTERY INSTL FOR ADDITIONAL INFORMATION.
 7. 10 PIN HSG CONNECTS TO GENERATOR.
 8. ROUTE GENERATOR CABLE ALONG WITH WIRE ASM-CHASSIS TO AND THROUGH FLOOR TO WIRE ASM-RIGHT. ROUTE UP TO MONITOR PANEL AREA.
 9. DRILL 10.4 MM HOLE IN CHASSIS RAIL FLANGE. CLEAN PAINT FROM FLANGE APPROXIMATELY 10 MM AROUND HOLE. BOLT AND NUT GROUND TERMINAL TO FLANGE.
 10. SEE DETAIL AB FOR CONNECTION OF CABLE ASM TO CHASSIS RAIL.
 11. DRILL 6.35 MM HOLE IN CHASSIS RAIL FLANGE. CLEAN PAINT FROM FLANGE APPROXIMATELY 10 MM AROUND HOLE. BOLT AND NUT GROUND RING FROM WIRE ASM-TRAILER TOW PLUG TO FLANGE.
 12. SEE INTERIOR INSTL-FRONT FOR ADDITIONAL INFORMATION.
 13. SEE DETAIL AA FOR CONNECTION OF WIRE ASM TO FORD SUPPLIED CONNECTOR LOCATED BEHIND GLOVE BOX.
 14. GROUNDS U,W,S ARE PART OF WIRE ASM-CHASSIS.

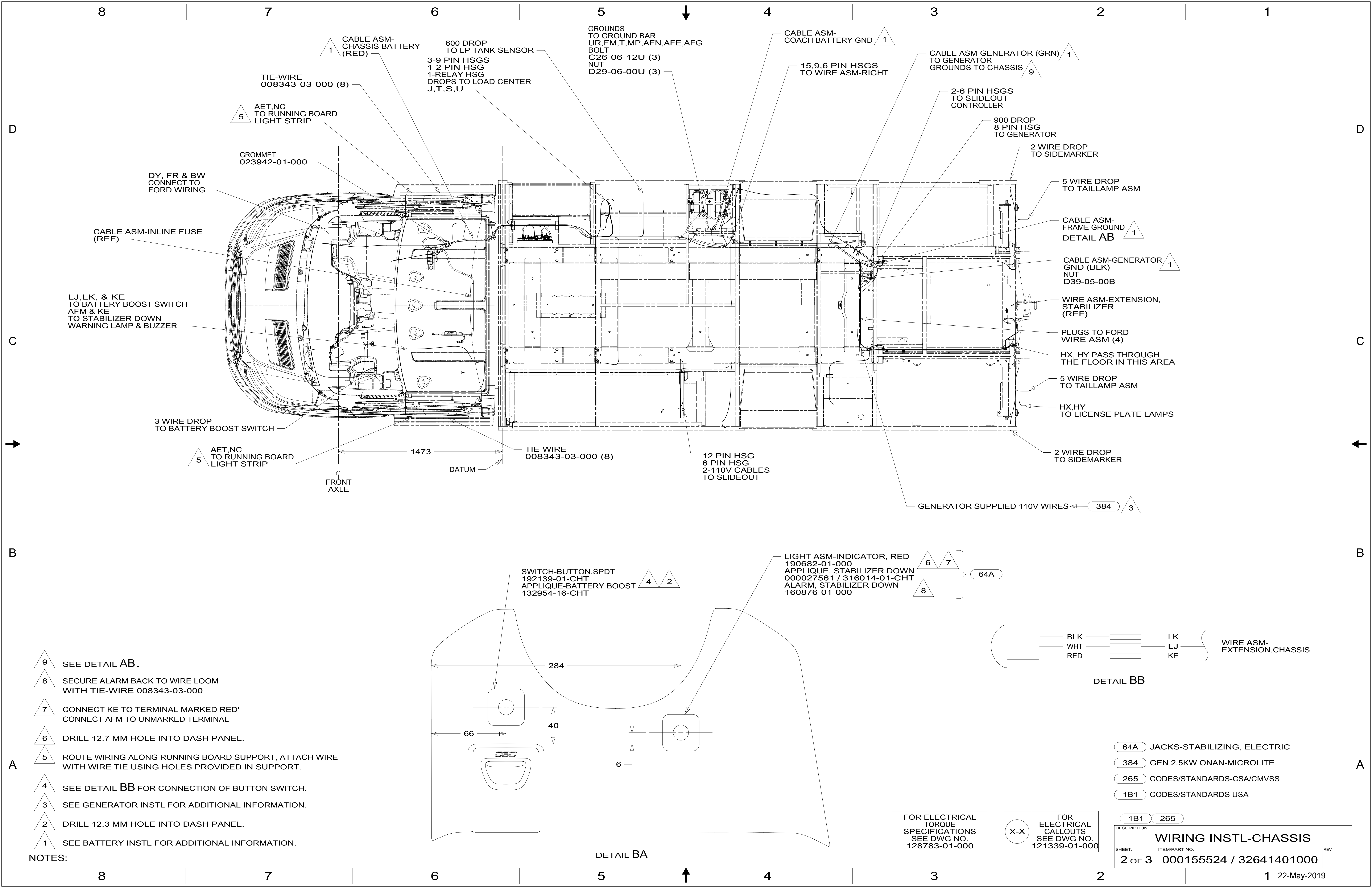


FOR ELECTRICAL TORQUE SPECIFICATIONS SEE DWG NO. 128783-01-000

FOR ELECTRICAL CALLOUTS SEE DWG NO. 121339-01-000

- 64A JACKS-STABILIZING, ELECTRIC
- 240 TRAILER HITCH
- 265 CODES/STANDARDS-CSA/CMVSS
- 1B1 CODES/STANDARDS USA

WINNEBAGO		COPYRIGHT 2016 WINNEBAGO INDUSTRIES, INC.	
DSNR:		ALL DIMENSIONS ARE IN MILLIMETERS	
DIFFR:		19 423F	
UNSPECIFIED TOLERANCES:		MATERIAL:	
WHOLE DIM (X)	± 3		
ONE-PLACE (X.X)	± 1.5		
TWO-PLACE (X.XX)	± 0.50		
ANGLE	± 1°		
REFER TO ES0018 FOR FASTENER TIGHTENING GUIDELINES	WEIGHT: (LBS)	FIRST USED:	
DESCRIPTION:		19 423F	
WIRING INSTL-CHASSIS			
SHEET:	ITEM/PART NO.:	REF:	
1 OF 3	000155524 / 32641401000		



1 CABLE ASM-CHASSIS BATTERY (RED)
 1 CABLE ASM-COACH BATTERY GND
 1 CABLE ASM-GENERATOR (GRN) TO GENERATOR GROUNDS TO CHASSIS
 1 CABLE ASM-FRAME GROUND DETAIL AB
 1 CABLE ASM-GENERATOR GND (BLK) NUT D39-05-00B

5 AET,NC TO RUNNING BOARD LIGHT STRIP

GROMMET 023942-01-000

DY, FR & BW CONNECT TO FORD WIRING

CABLE ASM-INLINE FUSE (REF)

LJ,LK, & KE TO BATTERY BOOST SWITCH
 AFM & KE TO STABILIZER DOWN WARNING LAMP & BUZZER

3 WIRE DROP TO BATTERY BOOST SWITCH

5 AET,NC TO RUNNING BOARD LIGHT STRIP

600 DROP TO LP TANK SENSOR
 3-9 PIN HSGS
 1-2 PIN HSG
 1-RELAY HSG
 DROPS TO LOAD CENTER J,T,S,U

5 GROUNDS TO GROUND BAR UR,FM,T,MP,AFN,AFE,AFG
 BOLT C26-06-12U (3)
 NUT D29-06-00U (3)

15,9,6 PIN HSGS TO WIRE ASM-RIGHT

2-6 PIN HSGS TO SLIDEOUT CONTROLLER
 900 DROP 8 PIN HSG TO GENERATOR

2 WIRE DROP TO SIDEMARKER

5 WIRE DROP TO TAILLAMP ASM

1 CABLE ASM-FRAME GROUND DETAIL AB

1 CABLE ASM-GENERATOR GND (BLK) NUT D39-05-00B

WIRE ASM-EXTENSION, STABILIZER (REF)

PLUGS TO FORD WIRE ASM (4)

HX, HY PASS THROUGH THE FLOOR IN THIS AREA

5 WIRE DROP TO TAILLAMP ASM

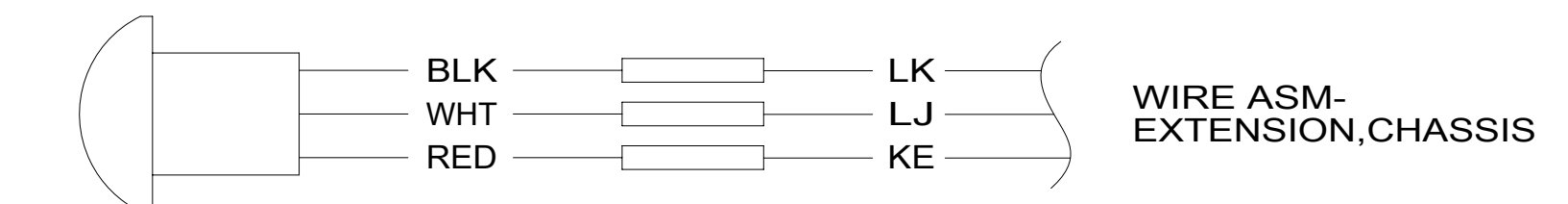
HX, HY TO LICENSE PLATE LAMPS

2 WIRE DROP TO SIDEMARKER

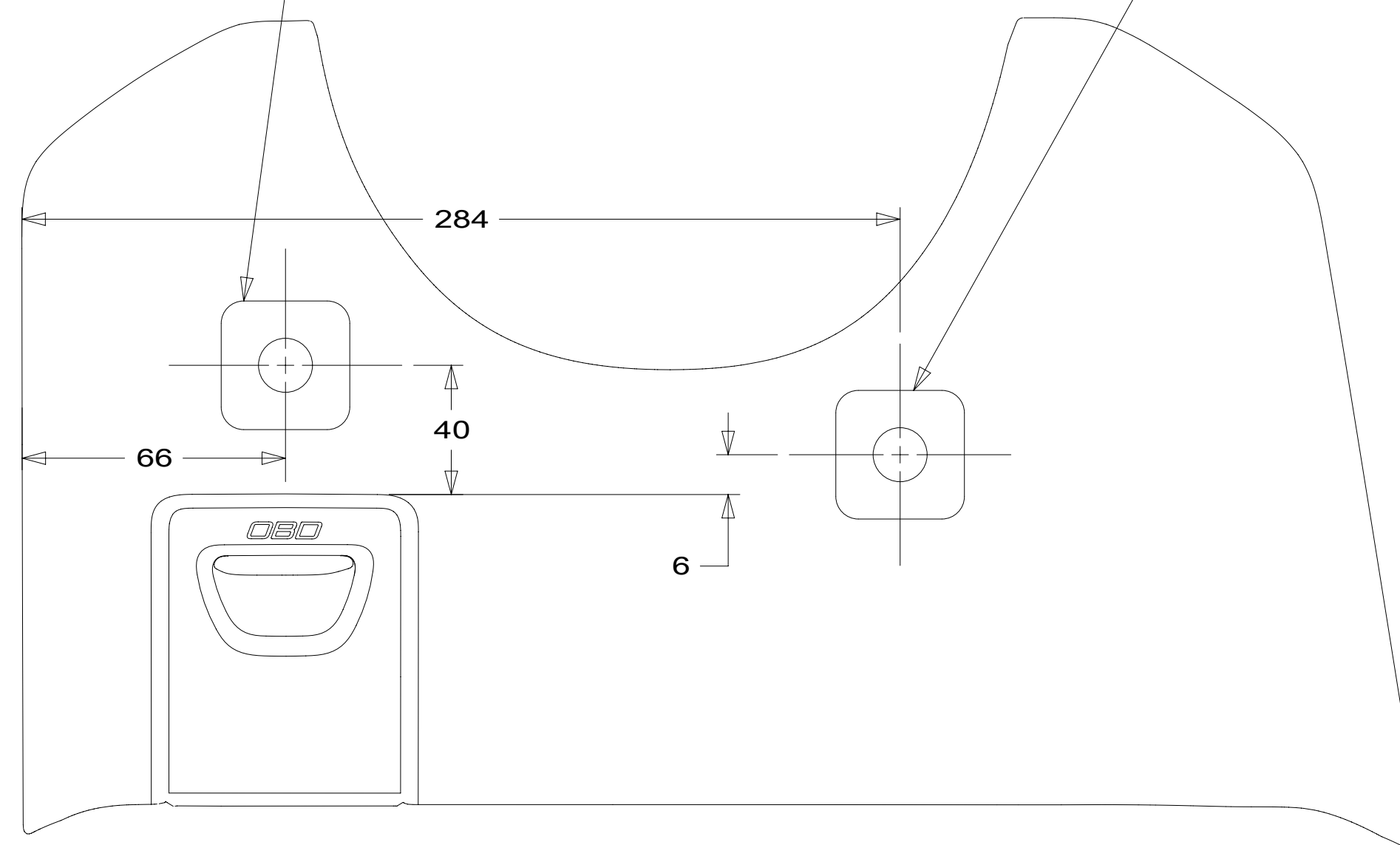
384 GENERATOR SUPPLIED 110V WIRES

4 SWITCH-BUTTON,SPDT 192139-01-CHT
 2 APPLIQUE-BATTERY BOOST 132954-16-CHT

6 LIGHT ASM-INDICATOR, RED 190682-01-000
 7 APPLIQUE, STABILIZER DOWN 000027561 / 316014-01-CHT
 8 ALARM, STABILIZER DOWN 160876-01-000



- NOTES:
- 9 SEE DETAIL AB.
 - 8 SECURE ALARM BACK TO WIRE LOOM WITH TIE-WIRE 008343-03-000
 - 7 CONNECT KE TO TERMINAL MARKED RED' CONNECT AFM TO UNMARKED TERMINAL
 - 6 DRILL 12.7 MM HOLE INTO DASH PANEL.
 - 5 ROUTE WIRING ALONG RUNNING BOARD SUPPORT, ATTACH WIRE WITH WIRE TIE USING HOLES PROVIDED IN SUPPORT.
 - 4 SEE DETAIL BB FOR CONNECTION OF BUTTON SWITCH.
 - 3 SEE GENERATOR INSTL FOR ADDITIONAL INFORMATION.
 - 2 DRILL 12.3 MM HOLE INTO DASH PANEL.
 - 1 SEE BATTERY INSTL FOR ADDITIONAL INFORMATION.

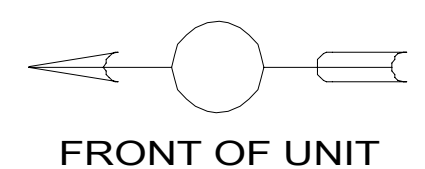
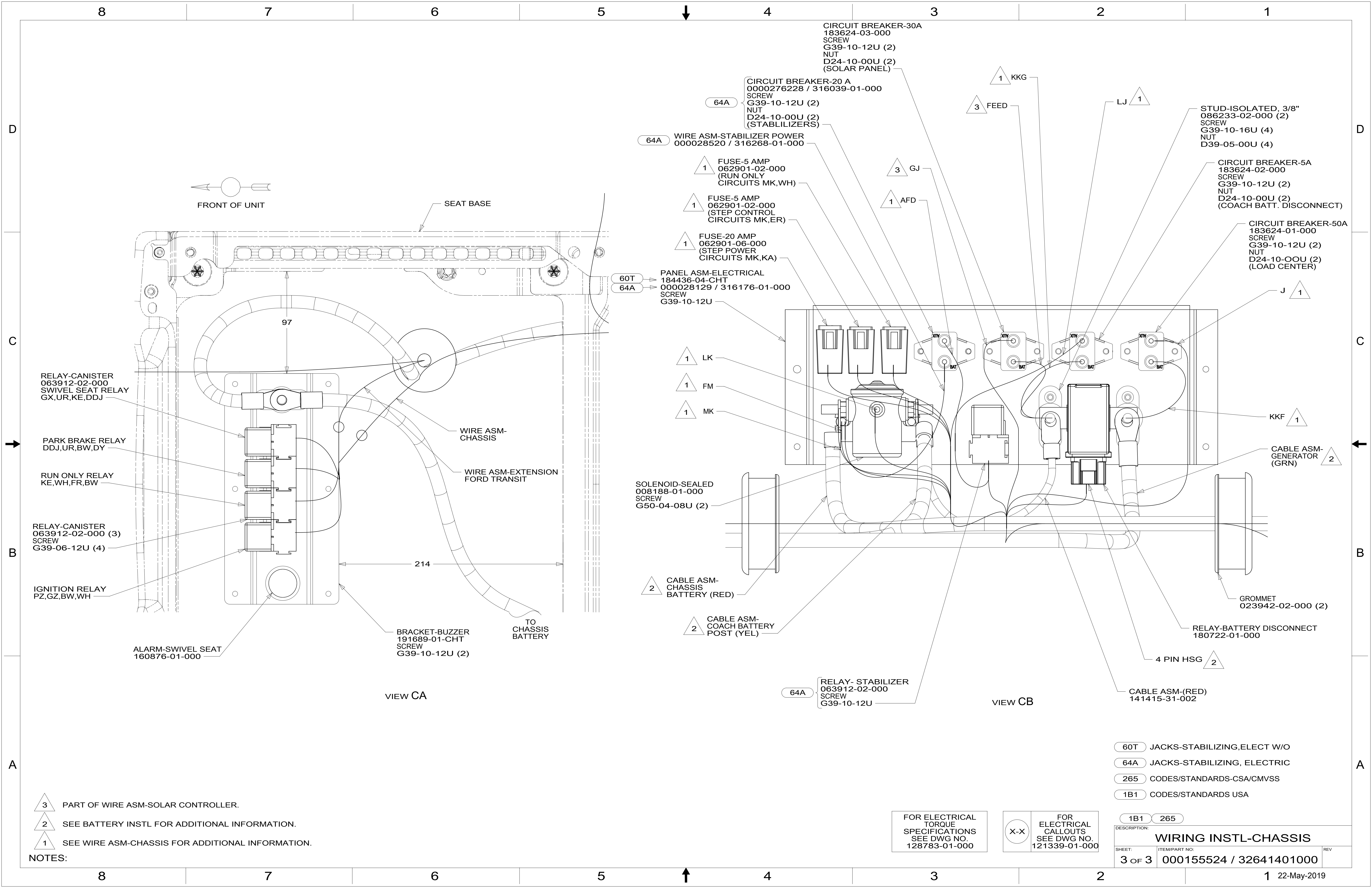


FOR ELECTRICAL TORQUE SPECIFICATIONS SEE DWG NO. 128783-01-000

X-X FOR ELECTRICAL CALLOUTS SEE DWG NO. 121339-01-000

- 64A JACKS-STABILIZING, ELECTRIC
- 384 GEN 2.5KW ONAN-MICROLITE
- 265 CODES/STANDARDS-CSA/CMVSS
- 1B1 CODES/STANDARDS USA

DESCRIPTION: WIRING INSTL-CHASSIS	
SHEET: 2 OF 3	ITEM/PART NO: 000155524 / 32641401000
REV 1 22-May-2019	



FRONT OF UNIT

SEAT BASE

97

214

VIEW CA

WIRE ASM-EXTENSION FORD TRANSIT

TO CHASSIS BATTERY

BRACKET-BUZZER
191689-01-CHT
SCREW
G39-10-12U (2)

ALARM-SWIVEL SEAT
160876-01-000

RELAY-CANISTER
063912-02-000
SWIVEL SEAT RELAY
GX,UR,KE,DDJ

PARK BRAKE RELAY
DDJ,UR,BW,DY

RUN ONLY RELAY
KE,WH,FR,BW

RELAY-CANISTER
063912-02-000 (3)
SCREW
G39-06-12U (4)

IGNITION RELAY
PZ,GZ,BW,WH

CIRCUIT BREAKER-30A
183624-03-000
SCREW
G39-10-12U (2)
NUT
D24-10-00U (2)
(SOLAR PANEL)

CIRCUIT BREAKER-20 A
0000276228 / 316039-01-000
SCREW
G39-10-12U (2)
NUT
D24-10-00U (2)
(STABILIZERS)

64A WIRE ASM-STABILIZER POWER
000028520 / 316268-01-000

1 FUSE-5 AMP
062901-02-000
(RUN ONLY
CIRCUITS MK,WH)

1 FUSE-5 AMP
062901-02-000
(STEP CONTROL
CIRCUITS MK,ER)

1 FUSE-20 AMP
062901-06-000
(STEP POWER
CIRCUITS MK,KA)

60T PANEL ASM-ELECTRICAL
184436-04-CHT
64A 000028129 / 316176-01-000
SCREW
G39-10-12U

1 LK

1 FM

1 MK

SOLENOID-SEALED
008188-01-000
SCREW
G50-04-08U (2)

2 CABLE ASM-
CHASSIS
BATTERY (RED)

2 CABLE ASM-
COACH BATTERY
POST (YEL)

64A RELAY- STABILIZER
063912-02-000
SCREW
G39-10-12U

1 KKG
3 FEED

3 GJ

1 AFD

LJ 1

STUD-ISOLATED, 3/8"
086233-02-000 (2)
SCREW
G39-10-16U (4)
NUT
D39-05-00U (4)

CIRCUIT BREAKER-5A
183624-02-000
SCREW
G39-10-12U (2)
NUT
D24-10-00U (2)
(COACH BATT. DISCONNECT)

CIRCUIT BREAKER-50A
183624-01-000
SCREW
G39-10-12U (2)
NUT
D24-10-00U (2)
(LOAD CENTER)

J 1

KKF 1

CABLE ASM-
GENERATOR
(GRN) 2

GROMMET
023942-02-000 (2)

RELAY-BATTERY DISCONNECT
180722-01-000

4 PIN HSG 2

CABLE ASM-(RED)
141415-31-002

60T JACKS-STABILIZING,ELECT W/O

64A JACKS-STABILIZING, ELECTRIC

265 CODES/STANDARDS-CSA/CMVSS

1B1 CODES/STANDARDS USA

- NOTES:
- 3 PART OF WIRE ASM-SOLAR CONTROLLER.
 - 2 SEE BATTERY INSTL FOR ADDITIONAL INFORMATION.
 - 1 SEE WIRE ASM-CHASSIS FOR ADDITIONAL INFORMATION.

FOR ELECTRICAL
TORQUE
SPECIFICATIONS
SEE DWG NO.
128783-01-000

FOR
ELECTRICAL
CALLOUTS
SEE DWG NO.
121339-01-000

DESCRIPTION:	1B1 265	
WIRING INSTL-CHASSIS		
SHEET:	ITEM/PART NO:	REV
3 OF 3	000155524 / 32641401000	