

8 7 6 5 4 3 2 1

D

D

C

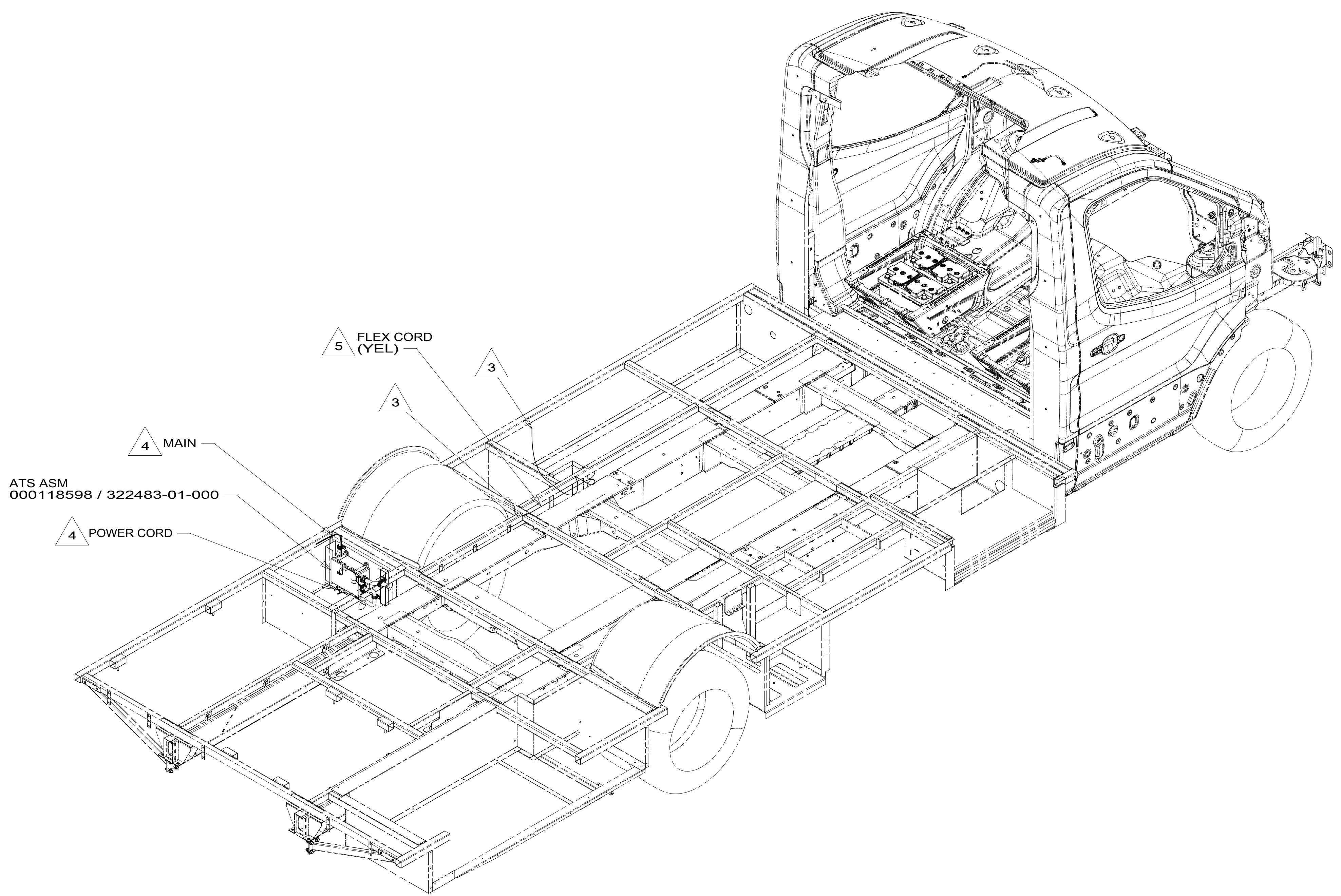
C

B

B

A

A



- 5 PART OF WIRE ASM-CHASSIS.
- 4 SEE ATs ASM FOR ADDITIONAL INFORMATION.
- 3 WIRE PASSES THROUGH FLOOR IN THIS AREA.

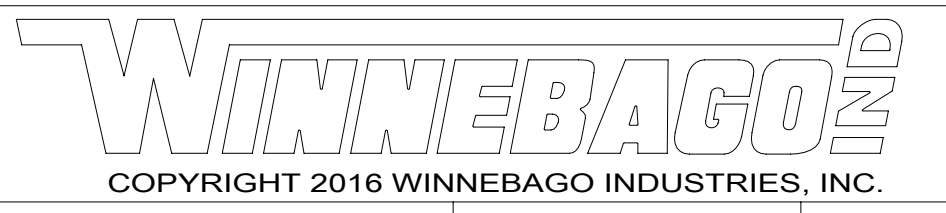
2. ALL 110V WIRE TO BE CLAMPED WITH CLAMP 10497-05-000 WITHIN 200MM OF OUTLET BOXES, USE SCREW G67-10-12U.
1. AT MINIMUM ALL WIRES TO BE SUPPORTED AND SECURED PER CODE REQUIREMENTS. USE CLAMP 10495 OR 10497 OR WIRE TIE 8343 OR 108046 AND SCREW G67-XX-XXX OR G56-XX-XXX AS APPROPRIATE FOR INSTALLATION.

NOTES:

FOR ELECTRICAL TORQUE SPECIFICATIONS SEE DWG NO. 128783-01-000

FOR ELECTRICAL CALLOUTS SEE DWG NO. 121339-01-000

- 265 CODES/STANDARDS-CSA/CMVSS
- 1B1 CODES/STANDARDS USA
- 1B1 265



DSNR:		ALL DIMENSIONS ARE IN MILLIMETERS	
DIFFR:		MATERIAL:	
UNSPECIFIED TOLERANCES:		WEIGHT: (LBS)	FIRST USED:
WHOLE DIM (X)	: 3		19 423F
ONE-PLACE (X.X)	: 1.5		
TWO-PLACE (X.XX)	: 0.50		
ANGLE	: 1°		

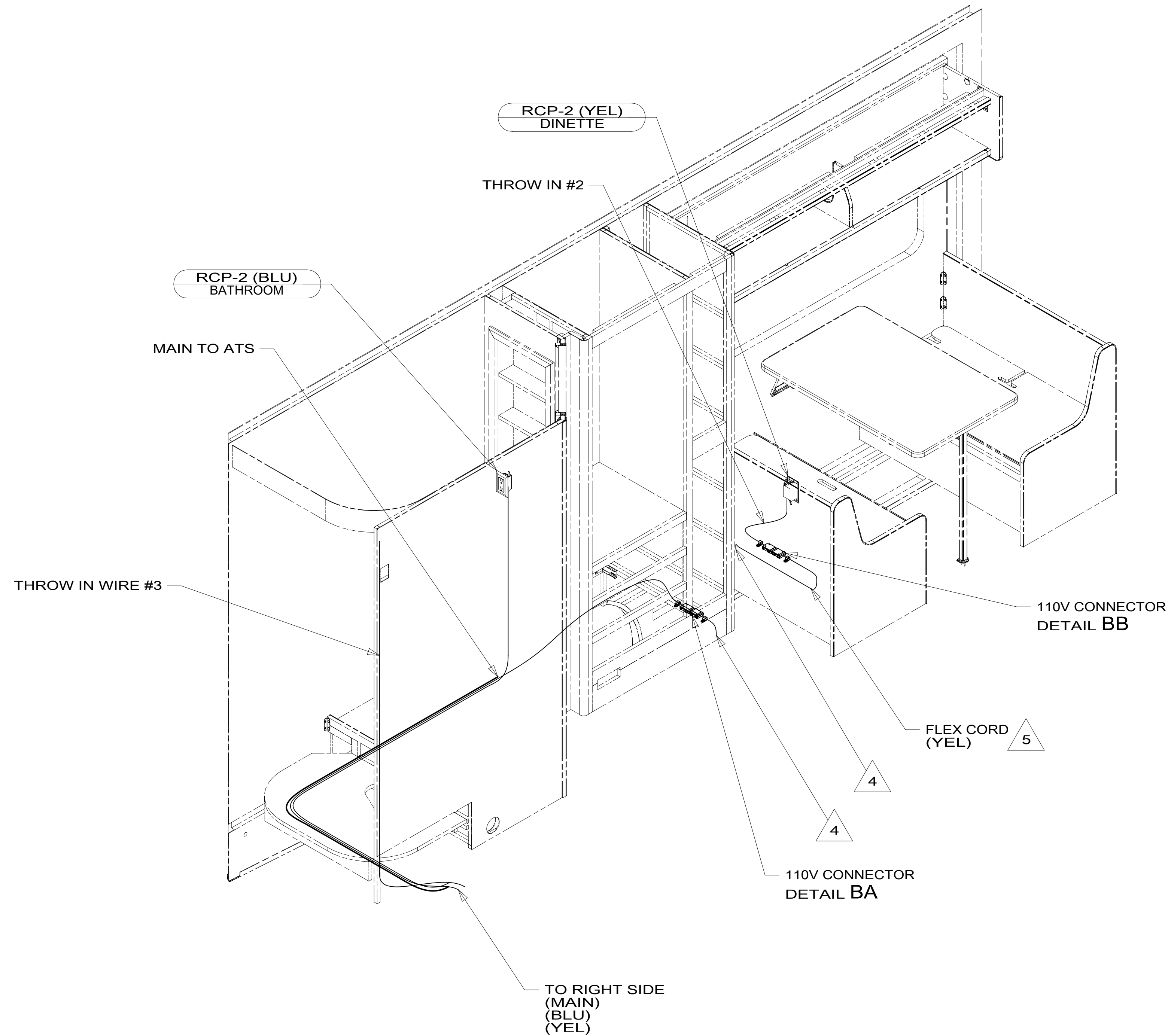
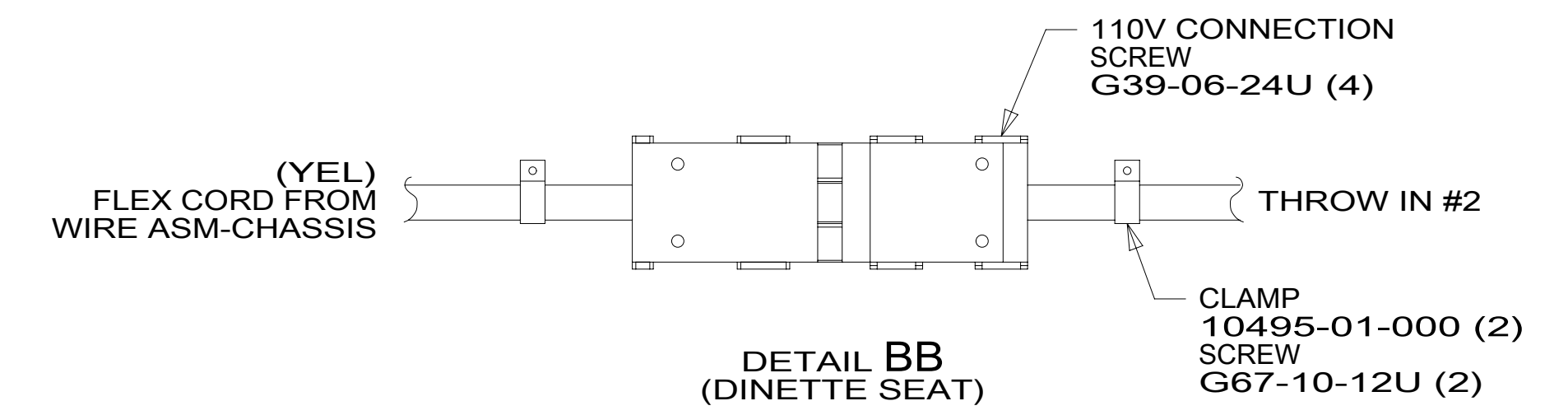
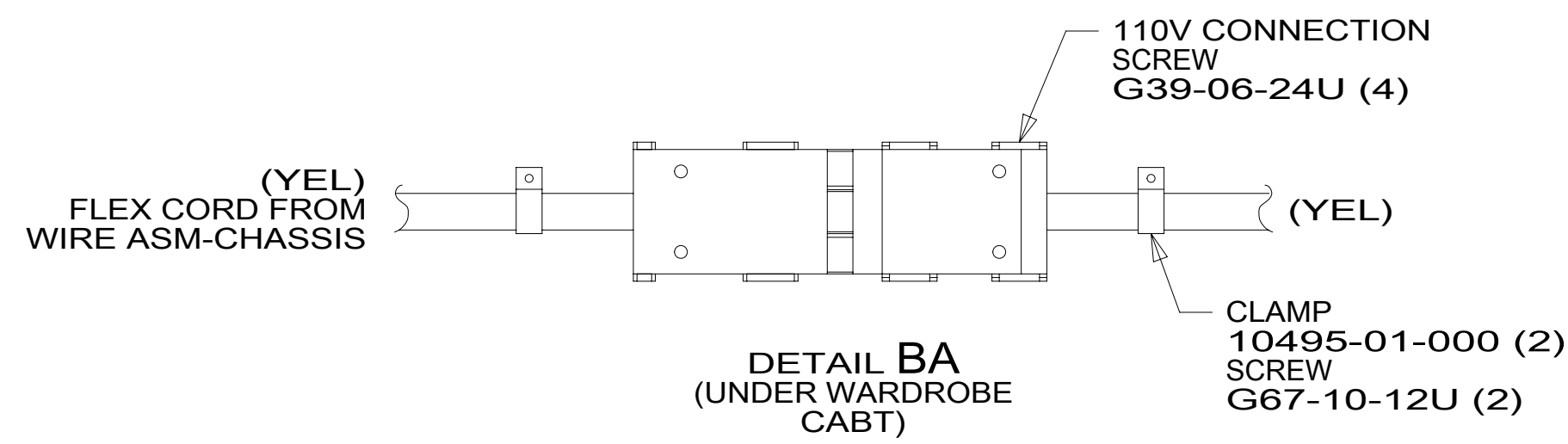
REFER TO ES0018 FOR FASTENER TIGHTENING GUIDELINES

**WIRING INSTL-BODY, 110V**

SHEET:	ITEM/PART NO.:	REV:
1 OF 6	000155523 / 32641301000	

REF: 1 02-May-2018

8 7 6 5 4 3 2 1



5 PART OF WIRE ASM-CHASSIS.

4 WIRE PASSES THROUGH FLOOR IN THIS AREA.

3. ALL GROUND WIRE TO BE COVERED WITH TUBING 8041-02-000.

2. ALL 110V WIRE TO BE CLAMPED WITH CLAMP 10497-05-000 WITHIN 200MM OF OUTLET BOXES, USE SCREW G67-10-12U.

1. AT MINIMUM ALL WIRES TO BE SUPPORTED AND SECURED PER CODE REQUIREMENTS. USE CLAMP 10495 OR 10497 OR WIRE TIE 8343 OR 108046 AND SCREW G67-XX-XXX OR G56-XX-XXX AS APPROPRIATE FOR INSTALLATION.

NOTES:

265 CODES/STANDARDS-CSA/CMVSS

1B1 CODES/STANDARDS USA

1B1 265

DESCRIPTION:

WIRING INSTL-BODY, 110V

SHEET: 2 OF 6

ITEM/PART NO: 000155523 / 32641301000

REV

FOR ELECTRICAL  
TORQUE  
SPECIFICATIONS  
SEE DWG NO.  
128783-01-000

X-X

FOR  
ELECTRICAL  
CALLOUTS  
SEE DWG NO.  
121339-01-000

8 7 6 5 4 3 2 1

D

D

C

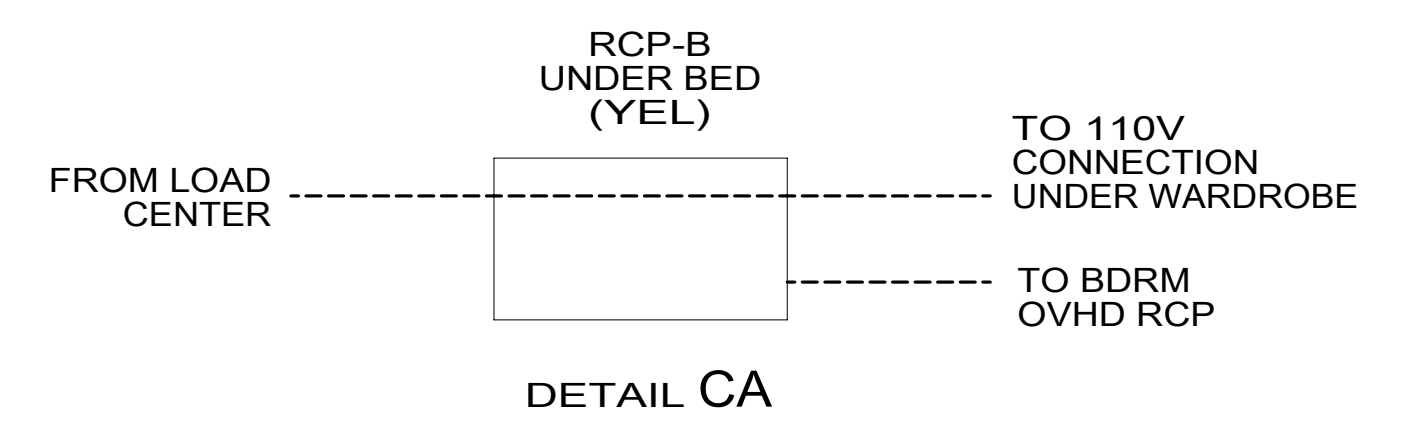
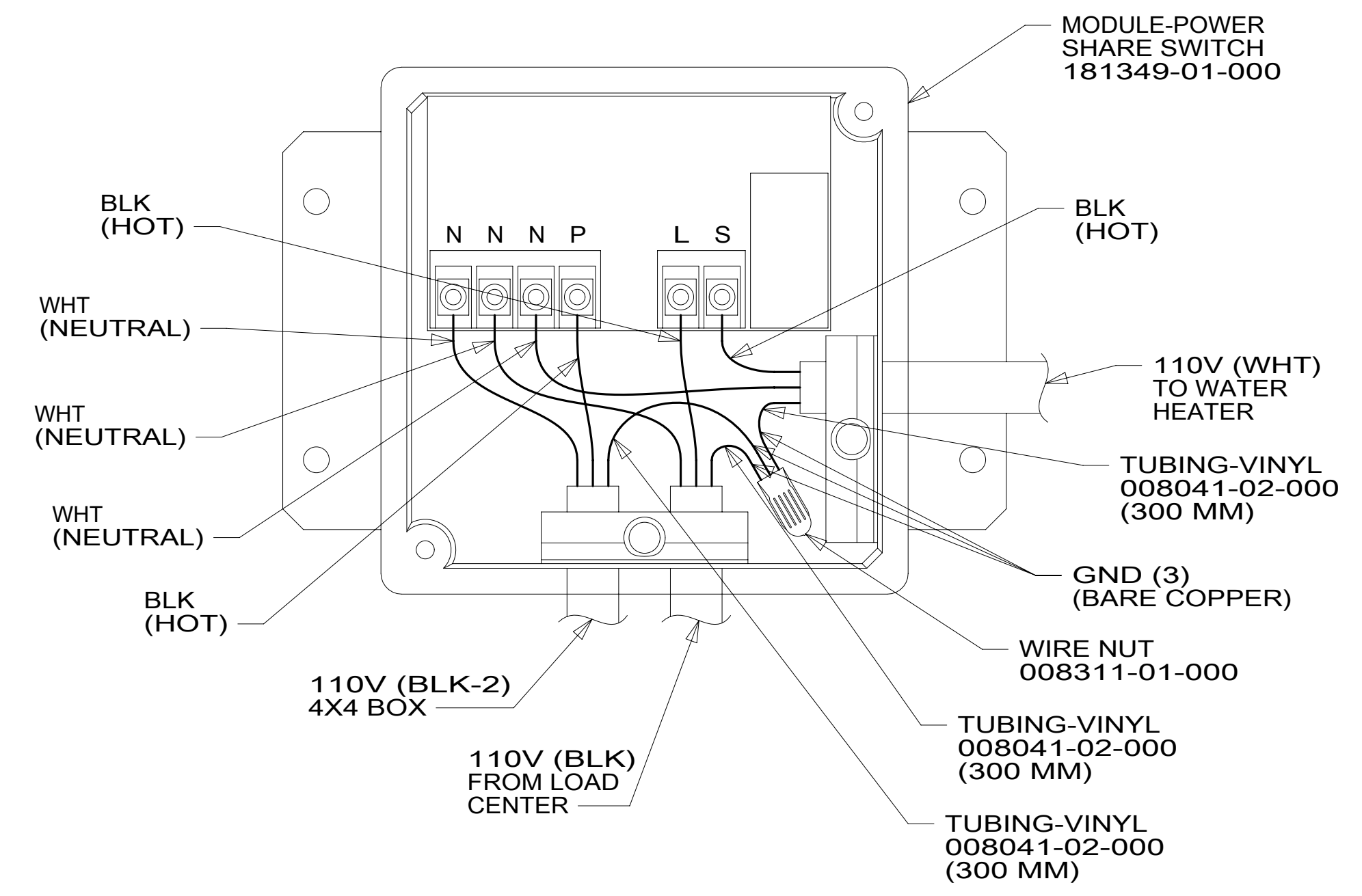
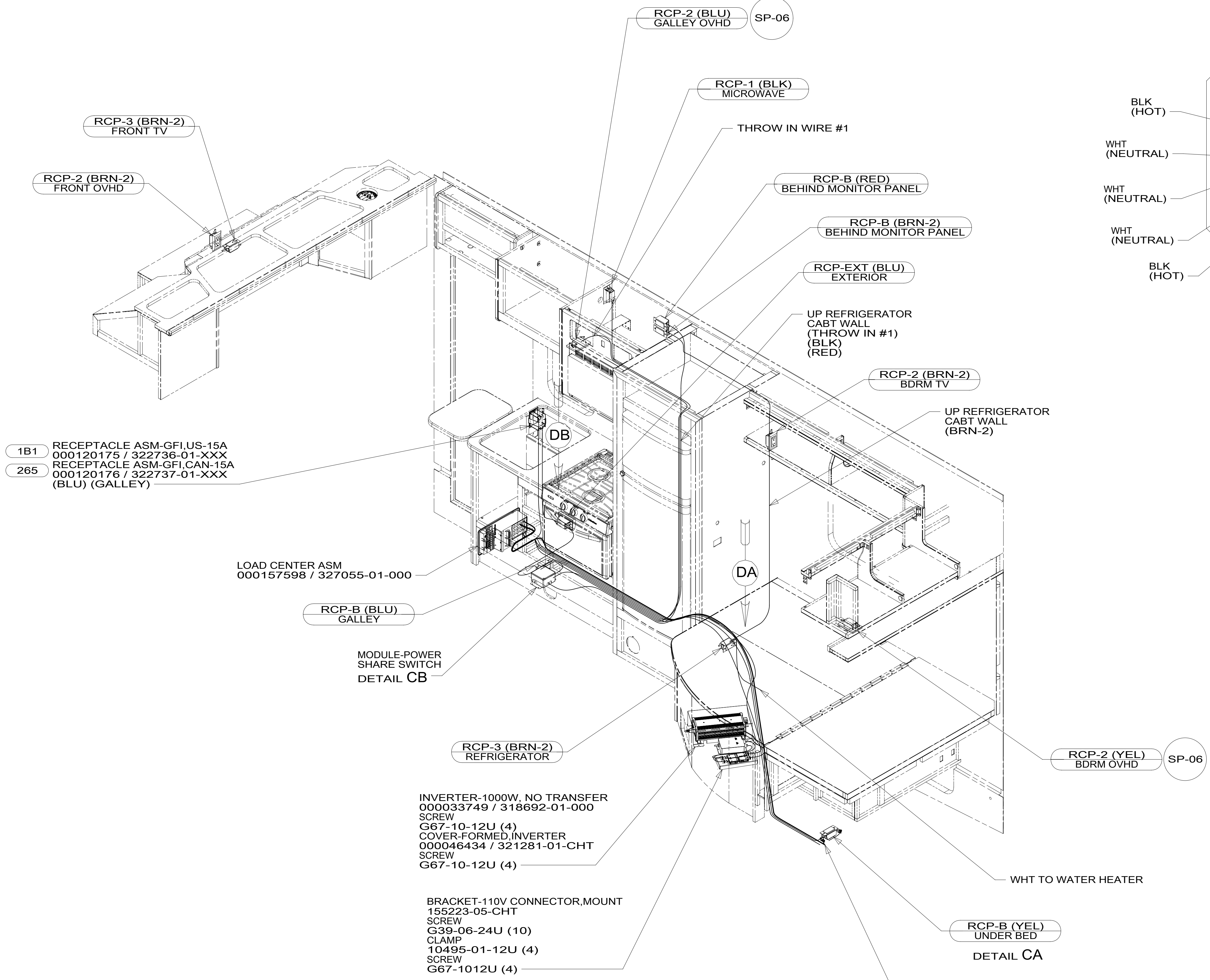
C

B

B

A

A



1B1 RECEPTACLE ASM-GFI,US-15A  
000120175 / 322736-01-XXX  
265 RECEPTACLE ASM-GFI,CAN-15A  
000120176 / 322737-01-XXX  
(BLU) (GALLEY)

INVERTER-1000W, NO TRANSFER  
000033749 / 318692-01-000  
SCREW  
G67-10-12U (4)  
COVER-FORMED,INVERTER  
000046434 / 321281-01-CHT  
SCREW  
G67-10-12U (4)

BRACKET-110V CONNECTOR,MOUNT  
155223-05-CHT  
SCREW  
G39-06-24U (10)  
CLAMP  
10495-01-12U (4)  
SCREW  
G67-1012U (4)

- NOTES:
1. AT MINIMUM ALL WIRES TO BE SUPPORTED AND SECURED PER CODE REQUIREMENTS. USE CLAMP 10495 OR 10497 OR WIRE TIE 8343 OR 108046 AND SCREW G67-XX-XXX OR G56-XX-XXX AS APPROPRIATE FOR INSTALLATION.
  2. ALL 110V WIRE TO BE CLAMPED WITH CLAMP 10497-05-000 WITHIN 200MM OF OUTLET BOXES, USE SCREW G67-10-12U.
  3. ALL GROUND WIRE TO BE COVERED WITH TUBING 8041-02-000.

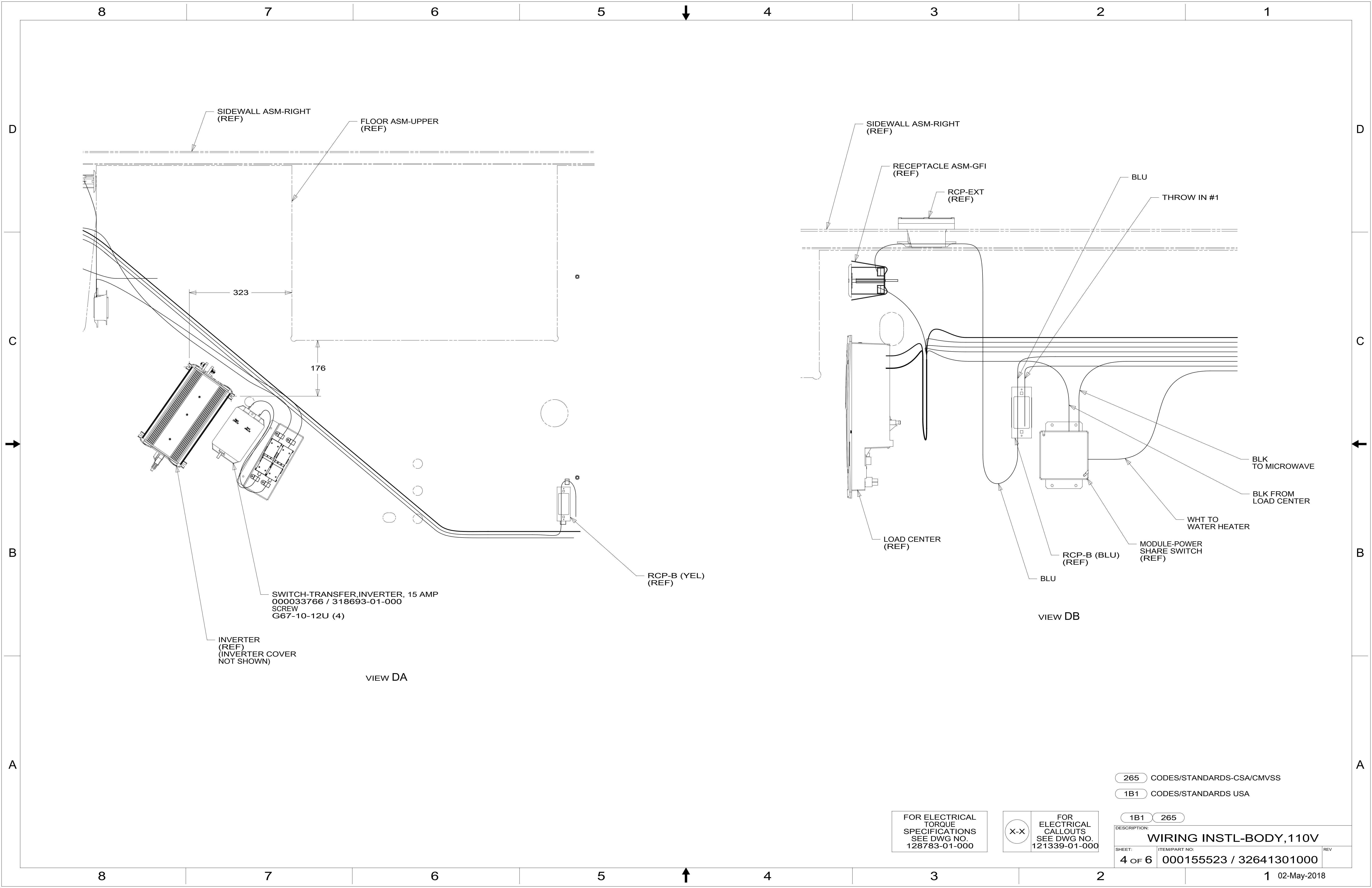
FOR ELECTRICAL TORQUE SPECIFICATIONS SEE DWG NO. 128783-01-000

FOR ELECTRICAL CALLOUTS SEE DWG NO. 121339-01-000

265 CODES/STANDARDS-CSA/CMVSS  
1B1 CODES/STANDARDS USA

DESCRIPTION: <b>WIRING INSTL-BODY, 110V</b>	
SHEET: <b>3 OF 6</b>	ITEM/PART NO.: <b>000155523 / 32641301000</b>
REV	

8 7 6 5 4 3 2 1 02-May-2018



SIDEWALL ASM-RIGHT (REF)  
 FLOOR ASM-UPPER (REF)

323  
 176

SWITCH-TRANSFER, INVERTER, 15 AMP  
 000033766 / 318693-01-000  
 SCREW  
 G67-10-12U (4)

INVERTER (REF)  
 (INVERTER COVER NOT SHOWN)

VIEW DA

RCP-B (YEL) (REF)

SIDEWALL ASM-RIGHT (REF)

RECEPTACLE ASM-GFI (REF)  
 RCP-EXT (REF)

BLU  
 THROW IN #1

LOAD CENTER (REF)

RCP-B (BLU) (REF)

MODULE-POWER SHARE SWITCH (REF)

BLK TO MICROWAVE

BLK FROM LOAD CENTER

WHT TO WATER HEATER

VIEW DB

- 265 CODES/STANDARDS-CSA/CMVSS
- 1B1 CODES/STANDARDS USA

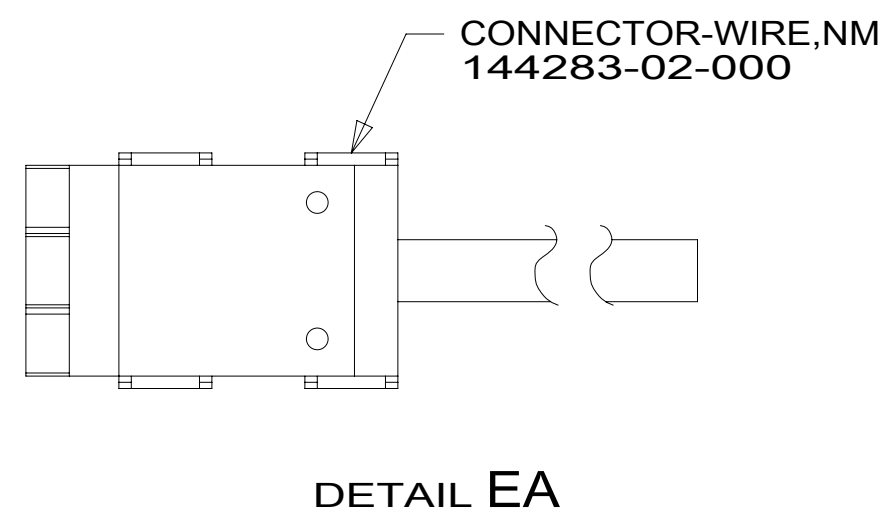
FOR ELECTRICAL TORQUE SPECIFICATIONS SEE DWG NO. 128783-01-000

FOR ELECTRICAL CALLOUTS SEE DWG NO. 121339-01-000

1B1 265

DESCRIPTION:  
**WIRING INSTL-BODY, 110V**

SHEET: 4 OF 6 ITEM/PART NO: 000155523 / 32641301000 REV



RED	1B1	136135-07-042	
	265	136136-07-042	
YEL	1B1	136131-05-087	2
	265	136134-05-087	2
BLK	1B1	136135-06-012	
	265	136136-06-012	
BRN	1B1	136131-03-038	2
	265	136134-03-038	2
BRN-2	1B1	136131-19-050	2
	265	136134-19-050	2
BLU	1B1	136131-02-110	
	265	136134-02-110	
MAIN	1B1	136137-01-074	
	265	136138-01-074	
BLK-2	1B1	136135-22-037	
	265	136136-22-037	
WHT	1B1	136135-09-023	
	265	136136-09-023	
THROW IN WIRE #1	1B1	136131-02-040	
	265	136134-02-040	
THROW IN WIRE #2	1B1	136131-05-006	2
	265	136134-05-006	2
THROW IN WIRE #3	1B1	136131-05-023	
	265	136134-05-023	

2 SEE DETAIL EA FOR CONNECTOR INSTALLATION.

1. ALL GROUND WIRES TO BE COVERED WITH TUBING 8041-02-000.

NOTES:

FOR ELECTRICAL TORQUE SPECIFICATIONS SEE DWG NO. 128783-01-000

FOR ELECTRICAL CALLOUTS SEE DWG NO. 121339-01-000

265 CODES/STANDARDS-CSA/CMVSS  
1B1 CODES/STANDARDS USA

DESCRIPTION:	
1B1 265 WIRING INSTL-BODY, 110V	
SHEET:	ITEM/PART NO:
5 OF 6	000155523 / 32641301000
REV	
1 02-May-2018	



