

8

7

6

5

4

3

2

1



D

D

C

C

B

B

A

A

CABLE ASM-CHASSIS GND EXT (BLK)		133566-12-042
CABLE ASM-CHASSIS BATTERY DISCONNECT SUPPLY (RED)		141415-32-054
CABLE ASM-COACH BATTERY DISCONNECT SUPPLY (YEL)		141416-52-050
CABLE ASM-COACH BATTERY GND (BLK)		133567-12-006
CABLE ASM-CHASSIS BATTERY DISCONNECT RETURN (PUR)		141415-12-032
CABLE ASM-GENERATOR (GRN)		141415-42-086
CABLE ASM-GENERATOR GND (BLK)		133566-12-008
LEVELING SYSTEM POWER CABLE (BLU)	60M	141415-29-020
LEVELING SYSTEM GND CABLE (BLK)	60M	133566-12-008
CABLE ASM-STARTER (RED)		141416-32-040
CABLE ASM-COACH BATTERY FUSE		141416-52-003
CABLE ASM-CHASSIS BATTERY FUSE		141415-32-003
CABLE ASM-INVERTER (ORG)		141415-62-018
CABLE ASM-INVERTER GND (BLK)		133566-12-020
CABLE ASM-INVERTER CASE GND (GND)		136145-05-018
CABLE ASM-INVERTER FUSE (ORG)		141415-62-004

- 60M HYDRAULIC LEVEL JACKS-AUTO
- 265 CODES/STANDARDS-CSA/CMVSS
- 1B1 CODES/STANDARDS USA

- 1B1 265



COPYRIGHT 2016 WINNEBAGO INDUSTRIES, INC.

DSNR:		ALL DIMENSIONS ARE IN MILLIMETERS	
DFFR:		MATERIAL:	
UNSPECIFIED TOLERANCES:			
WHOLE DIM (X)	: 3		
ONE-PLACE (X.X)	: 1.5		
TWO-PLACE (X.XX)	: 0.50		
ANGLE	: 1°		

FOR ELECTRICAL TORQUE SPECIFICATIONS SEE DWG NO. 128783-01-000

FOR ELECTRICAL CALLOUTS SEE DWG NO. 121339-01-000

REFER TO ES0018 FOR FASTENER TIGHTENING GUIDELINES

WEIGHT: (LBS) FIRST USED: 19 F33C

DESCRIPTION: BATTERY INSTL

SHEET: 1 OF 4 ITEM/PART NO: 000155353 / 32631401000 REF: 1 24-Jan-2019

8

7

6

5

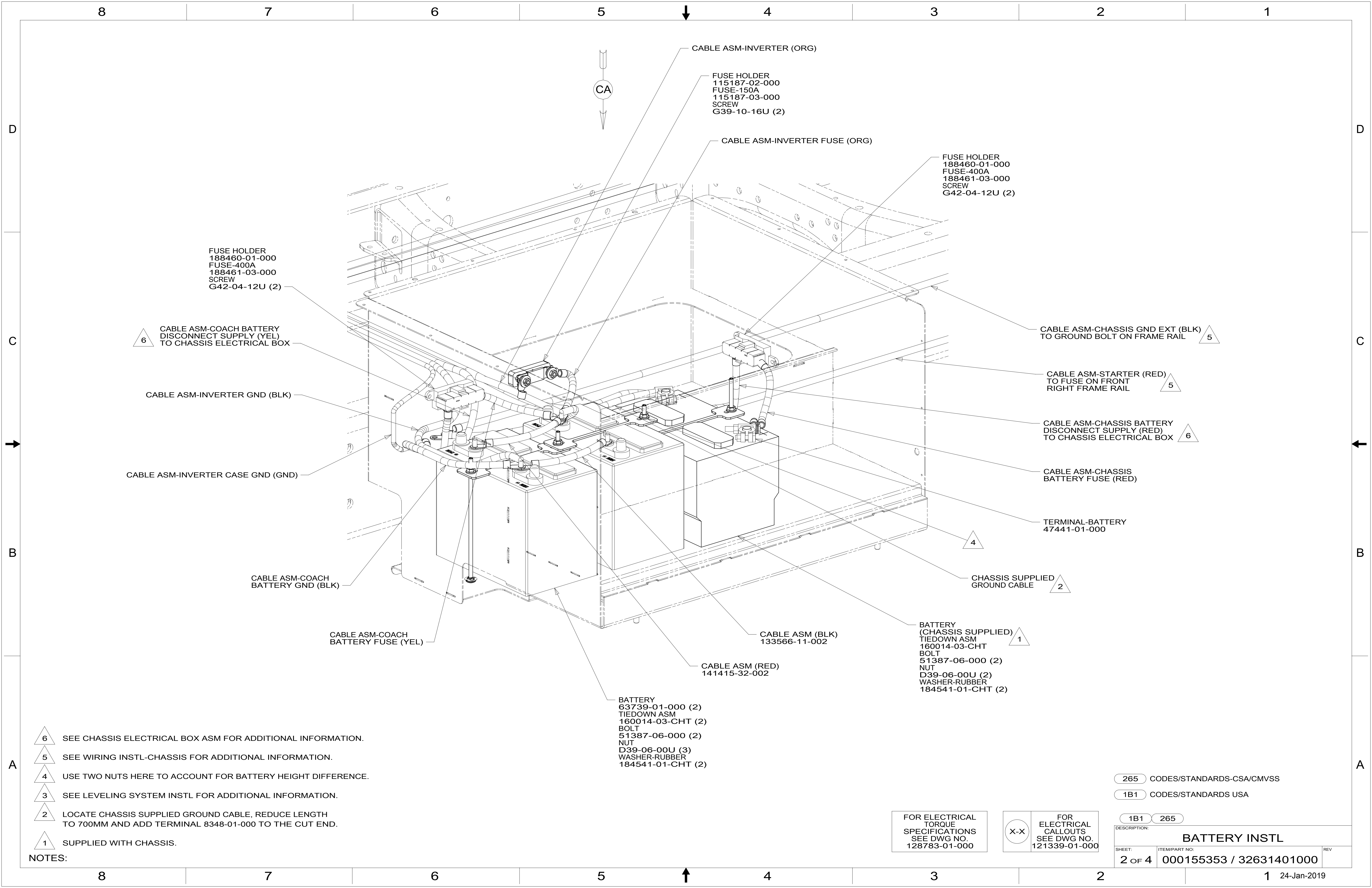
4

3

2

1





FUSE HOLDER
188460-01-000
FUSE-400A
188461-03-000
SCREW
G42-04-12U (2)

6 CABLE ASM-COACH BATTERY DISCONNECT SUPPLY (YEL) TO CHASSIS ELECTRICAL BOX

CABLE ASM-INVERTER GND (BLK)

CABLE ASM-INVERTER CASE GND (GND)

CABLE ASM-COACH BATTERY GND (BLK)

CABLE ASM-COACH BATTERY FUSE (YEL)

CABLE ASM-INVERTER (ORG)

FUSE HOLDER
115187-02-000
FUSE-150A
115187-03-000
SCREW
G39-10-16U (2)

CABLE ASM-INVERTER FUSE (ORG)

FUSE HOLDER
188460-01-000
FUSE-400A
188461-03-000
SCREW
G42-04-12U (2)

5 CABLE ASM-CHASSIS GND EXT (BLK) TO GROUND BOLT ON FRAME RAIL

5 CABLE ASM-STARTER (RED) TO FUSE ON FRONT RIGHT FRAME RAIL

6 CABLE ASM-CHASSIS BATTERY DISCONNECT SUPPLY (RED) TO CHASSIS ELECTRICAL BOX

CABLE ASM-CHASSIS BATTERY FUSE (RED)

4 TERMINAL-BATTERY 47441-01-000

2 CHASSIS SUPPLIED GROUND CABLE

CABLE ASM (BLK) 133566-11-002

CABLE ASM (RED) 141415-32-002

1 BATTERY (CHASSIS SUPPLIED) TIEDOWN ASM 160014-03-CHT BOLT 51387-06-000 (2) NUT D39-06-00U (2) WASHER-RUBBER 184541-01-CHT (2)

BATTERY 63739-01-000 (2) TIEDOWN ASM 160014-03-CHT (2) BOLT 51387-06-000 (2) NUT D39-06-00U (3) WASHER-RUBBER 184541-01-CHT (2)

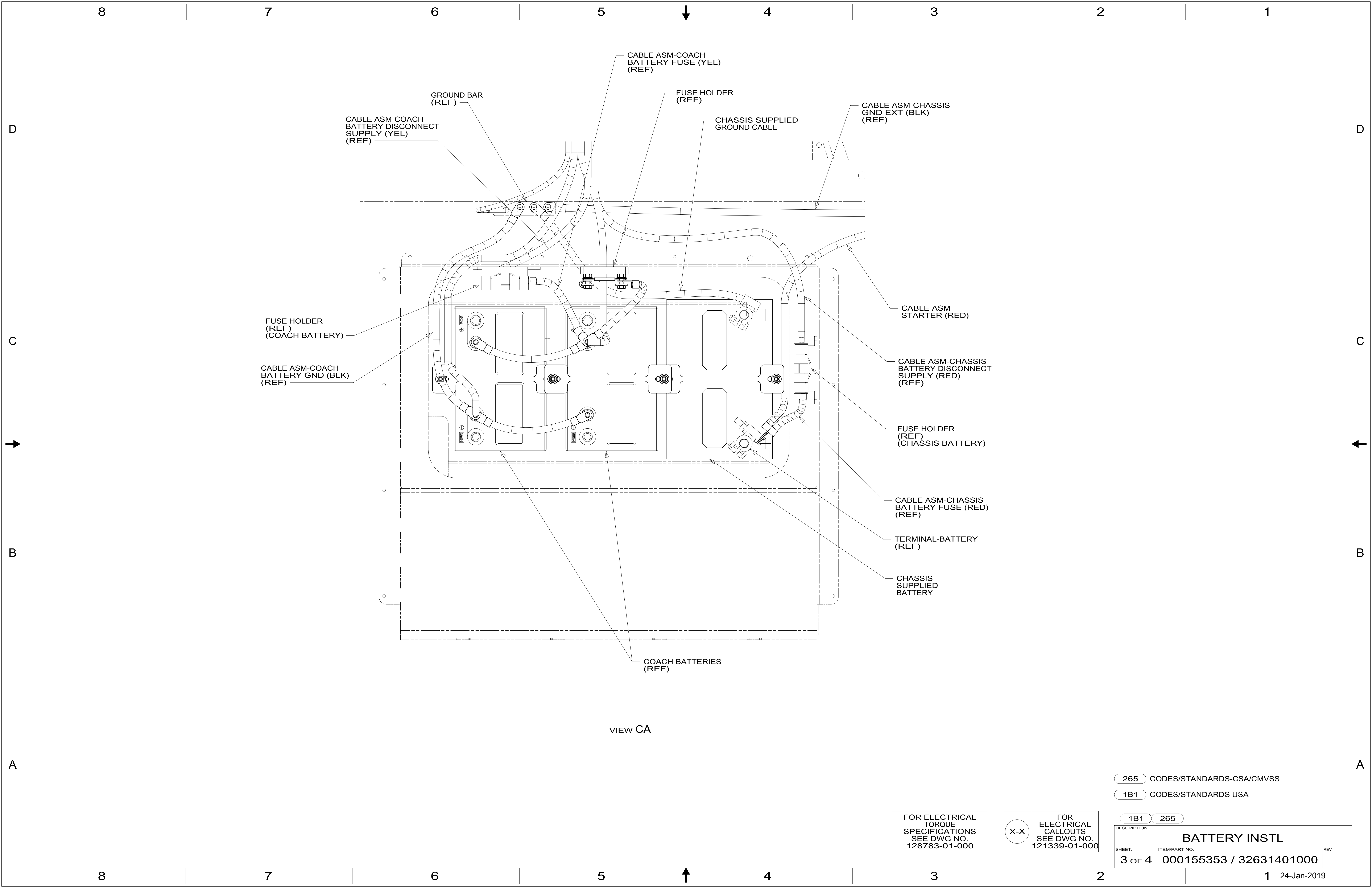
- NOTES:
- 6 SEE CHASSIS ELECTRICAL BOX ASM FOR ADDITIONAL INFORMATION.
 - 5 SEE WIRING INSTL-CHASSIS FOR ADDITIONAL INFORMATION.
 - 4 USE TWO NUTS HERE TO ACCOUNT FOR BATTERY HEIGHT DIFFERENCE.
 - 3 SEE LEVELING SYSTEM INSTL FOR ADDITIONAL INFORMATION.
 - 2 LOCATE CHASSIS SUPPLIED GROUND CABLE, REDUCE LENGTH TO 700MM AND ADD TERMINAL 8348-01-000 TO THE CUT END.
 - 1 SUPPLIED WITH CHASSIS.

265 CODES/STANDARDS-CSA/CMVSS
1B1 CODES/STANDARDS USA

FOR ELECTRICAL TORQUE SPECIFICATIONS SEE DWG NO. 128783-01-000

FOR ELECTRICAL CALLOUTS SEE DWG NO. 121339-01-000

DESCRIPTION:		1B1 265	
BATTERY INSTL			
SHEET:	ITEM/PART NO:	REV	
2 OF 4	000155353 / 32631401000		



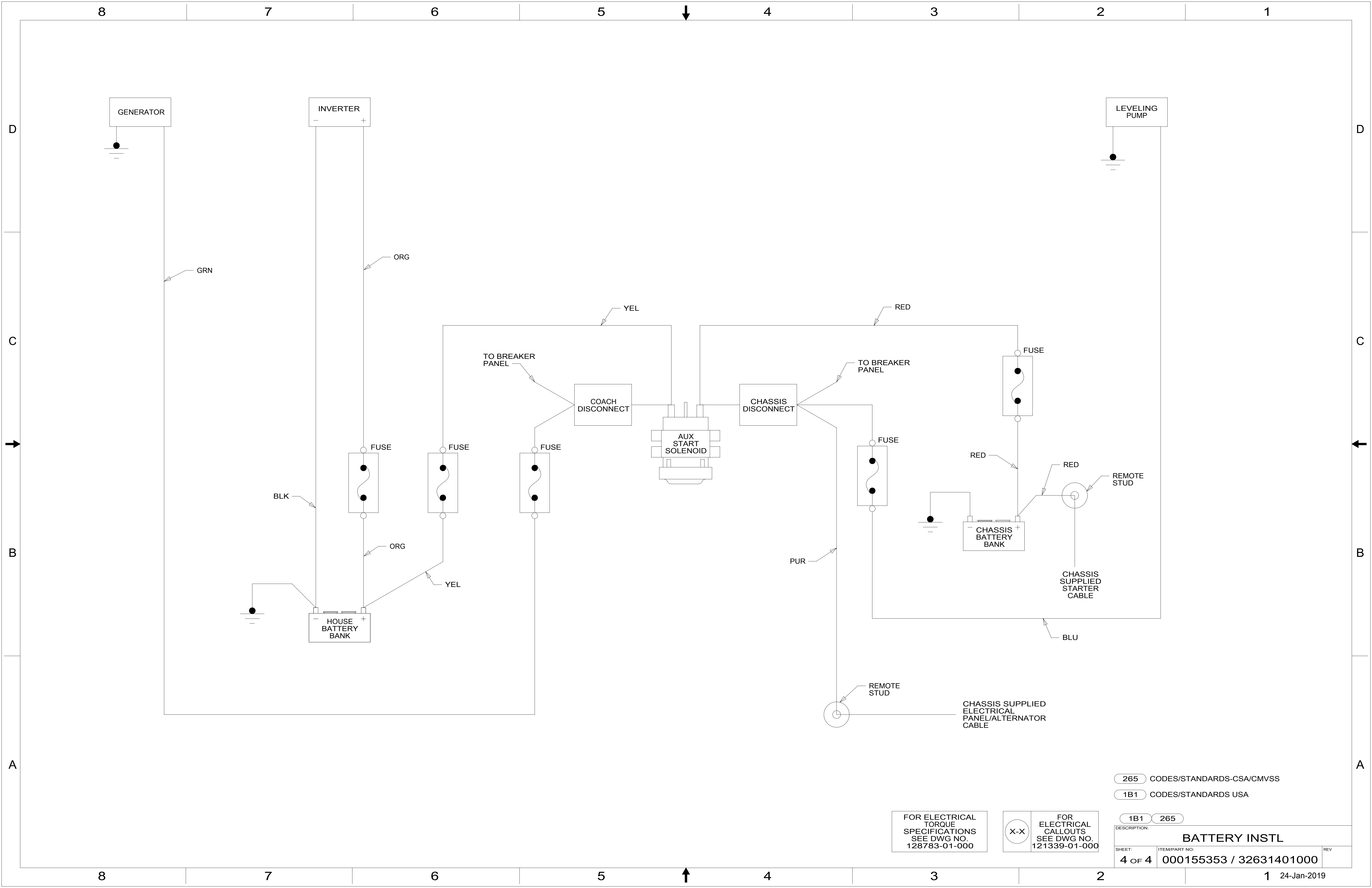
VIEW CA

265 CODES/STANDARDS-CSA/CMVSS
 1B1 CODES/STANDARDS USA

FOR ELECTRICAL TORQUE SPECIFICATIONS SEE DWG NO. 128783-01-000

FOR ELECTRICAL CALLOUTS SEE DWG NO. 121339-01-000

DESCRIPTION:		1B1 265	
BATTERY INSTL			
SHEET:	ITEM/PART NO.:	REV	
3 OF 4	000155353 / 32631401000		



265 CODES/STANDARDS-CSA/CMVSS
 1B1 CODES/STANDARDS USA

FOR ELECTRICAL TORQUE SPECIFICATIONS SEE DWG NO. 128783-01-000

FOR ELECTRICAL CALLOUTS SEE DWG NO. 121339-01-000

DESCRIPTION:		1B1 265	
BATTERY INSTL			
SHEET:	ITEM/PART NO.:	REV	
4 OF 4	000155353 / 32631401000		