

8 7 6 5 4 3 2 1

D  
C  
B  
A

D  
C  
B  
A

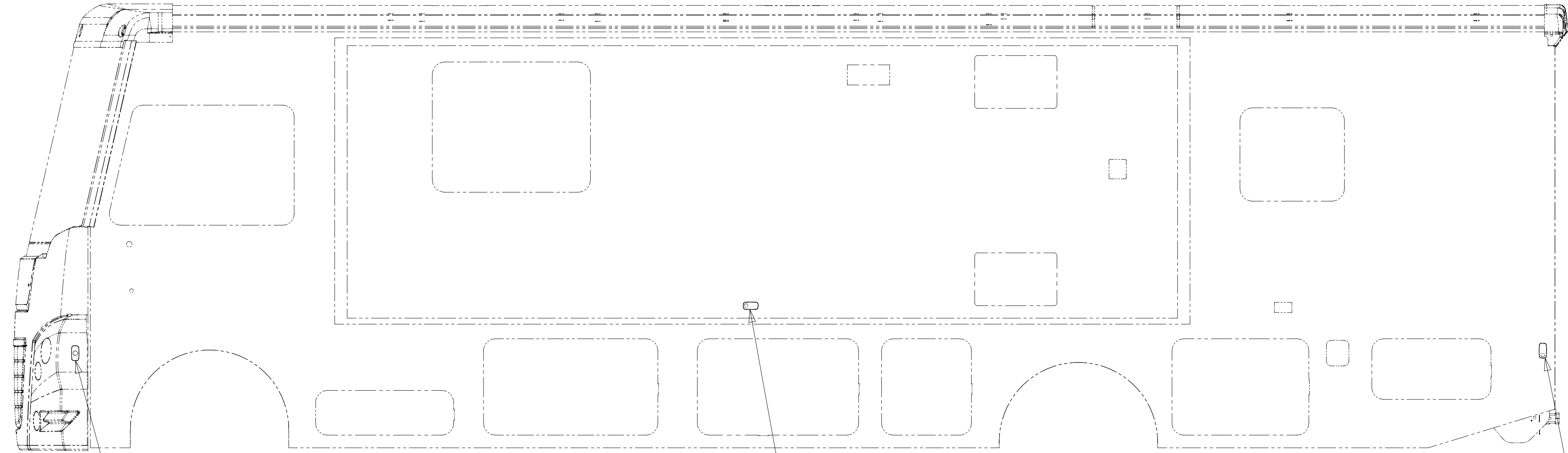
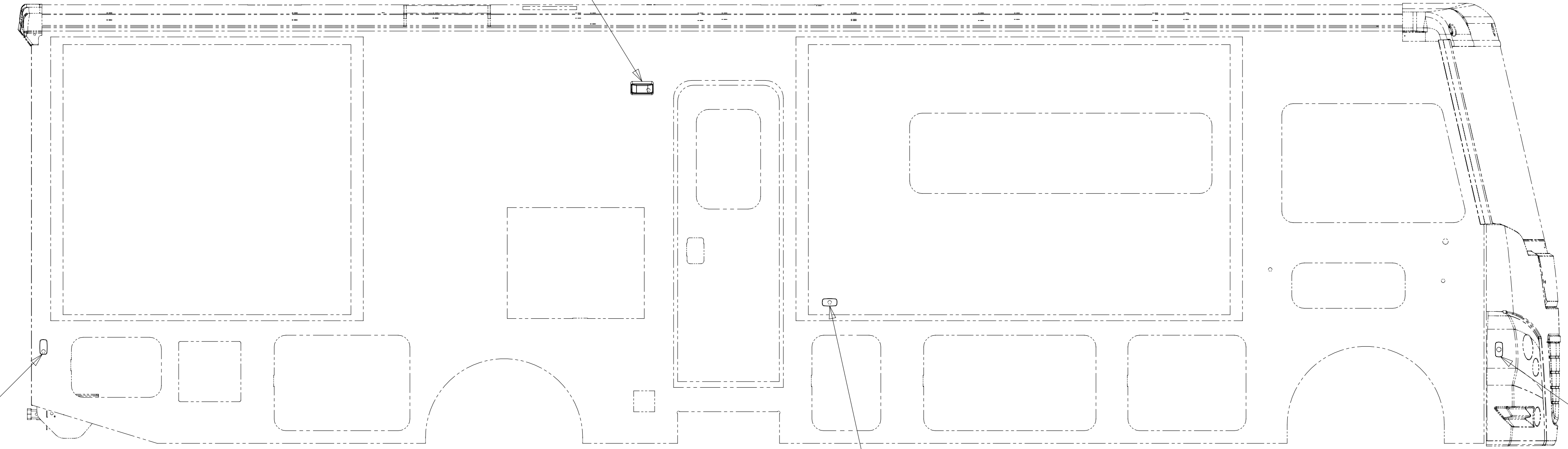
LEXT-1  
SEAL

LAMP-MARKER,W RED LENS,BLK  
193802-04-000  
SCREW  
G39-08-12U (2)

LAMP-MARKER,W AMBER LENS,BLK  
193802-03-000  
SCREW  
G11-08-12U (2)

LAMP-MARKER,W AMBER LENS,BLK  
193802-03-000  
SCREW  
G11-08-12U (2)

BA



BB

LAMP-MARKER,W AMBER LENS,BLK  
193802-03-000  
SCREW  
G11-08-12U (2)

LAMP-MARKER,W AMBER LENS,BLK  
193802-03-000  
SCREW  
G11-08-12U (2)

LAMP-MARKER,W RED LENS,BLK  
193802-04-000  
SCREW  
G39-08-12U (2)

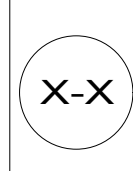
- 265 CODES/STANDARDS-CSA/CMVSS
- 1B1 CODES/STANDARDS-USA
- 1B1 265



DSNR:	ALL DIMENSIONS ARE IN MILLIMETERS	
DFFR:	MATERIAL:	
UNSPECIFIED TOLERANCES:		
WHOLE DIM (X)	: 3	
ONE-PLACE (X.X)	: 1.5	
TWO-PLACE (X.XX)	: 0.50	
ANGLE	: 1°	
REFER TO ES0018 FOR FASTENER TIGHTENING GUIDELINES	WEIGHT: (LBS)	FIRST USED:
		19 F-SER

FOR ELECTRICAL TORQUE SPECIFICATIONS SEE DWG NO. 128783-01-000

FOR ELECTRICAL CALLOUTS SEE DWG NO. 121339-01-000



DESCRIPTION:  
**WIRING INSTL-EXTERIOR LAMPS**

SHEET: 1 OF 2 ITEM/PART NO.: 000155328 / 32630501000 REV:

8 7 6 5 4 3 2 1

8 7 6 5 4 3 2 1

D

C

B

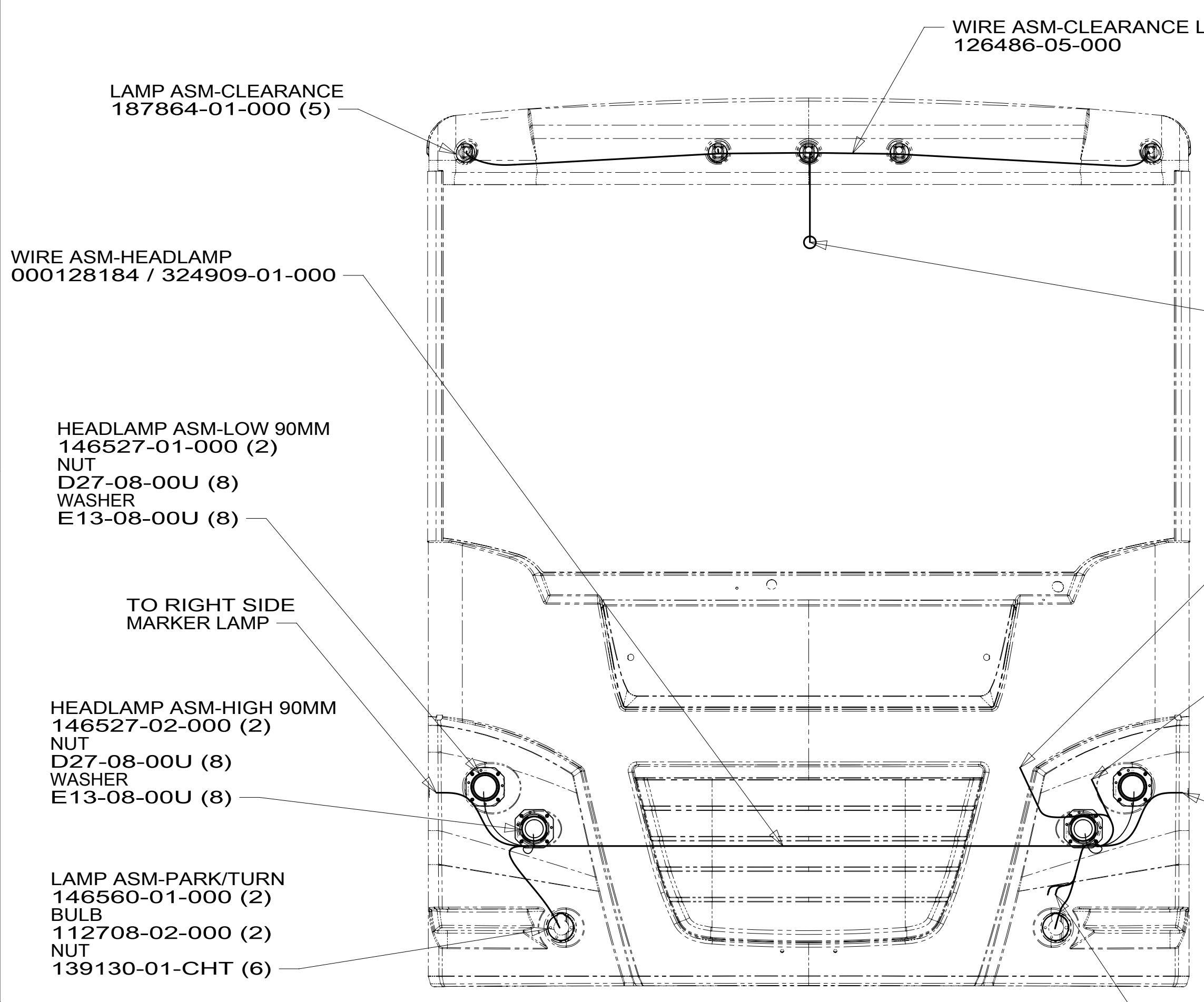
A

D

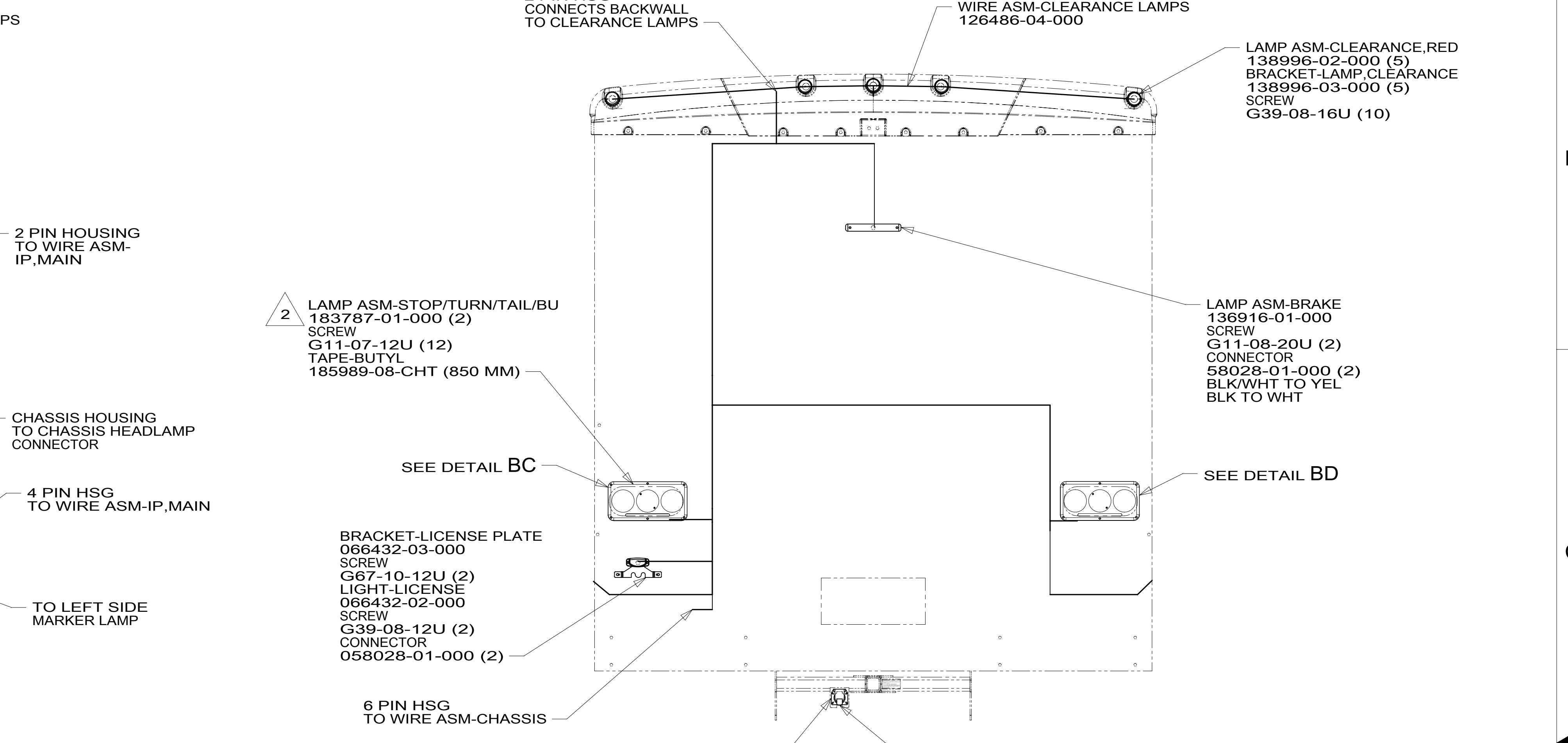
C

B

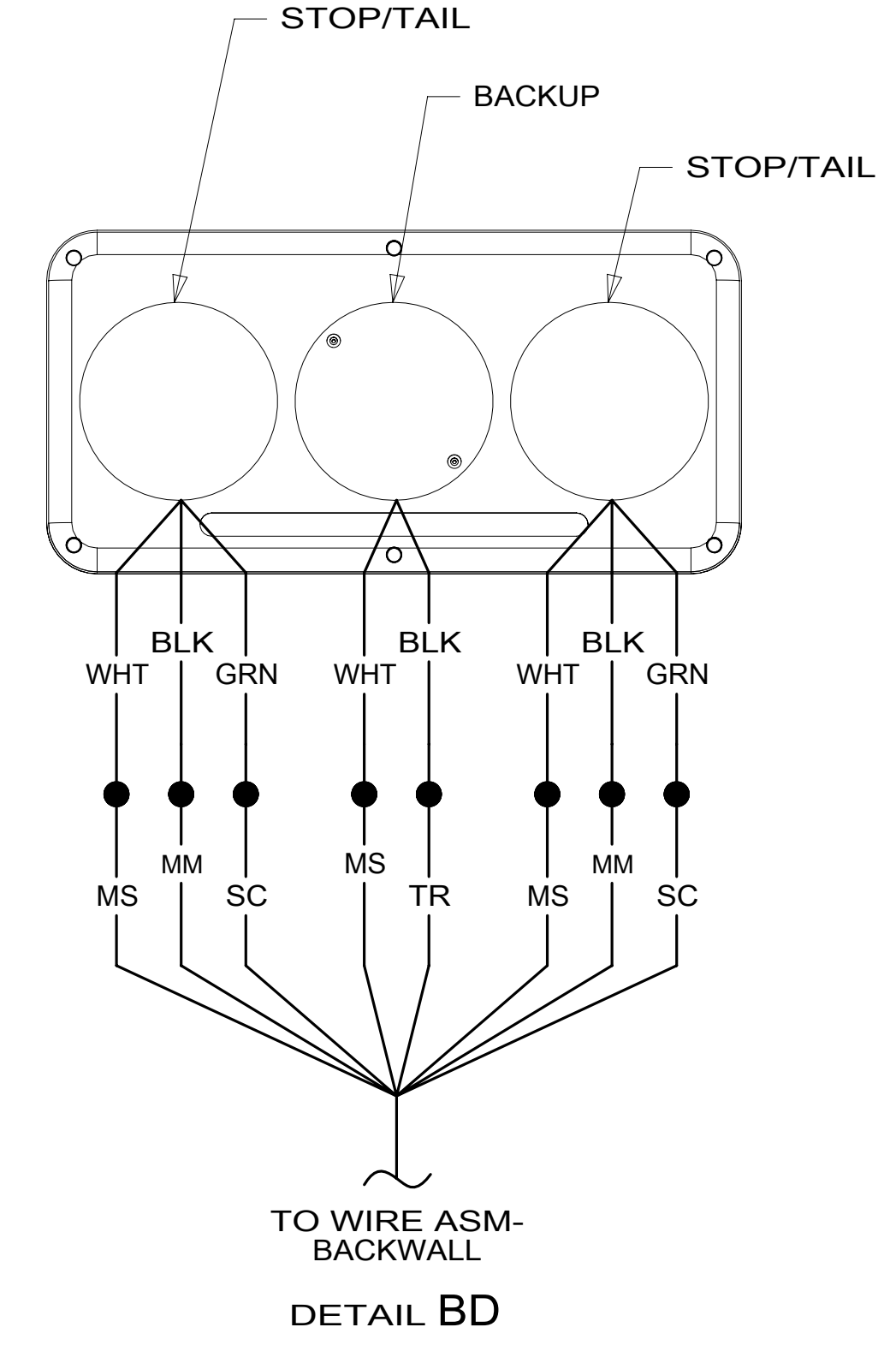
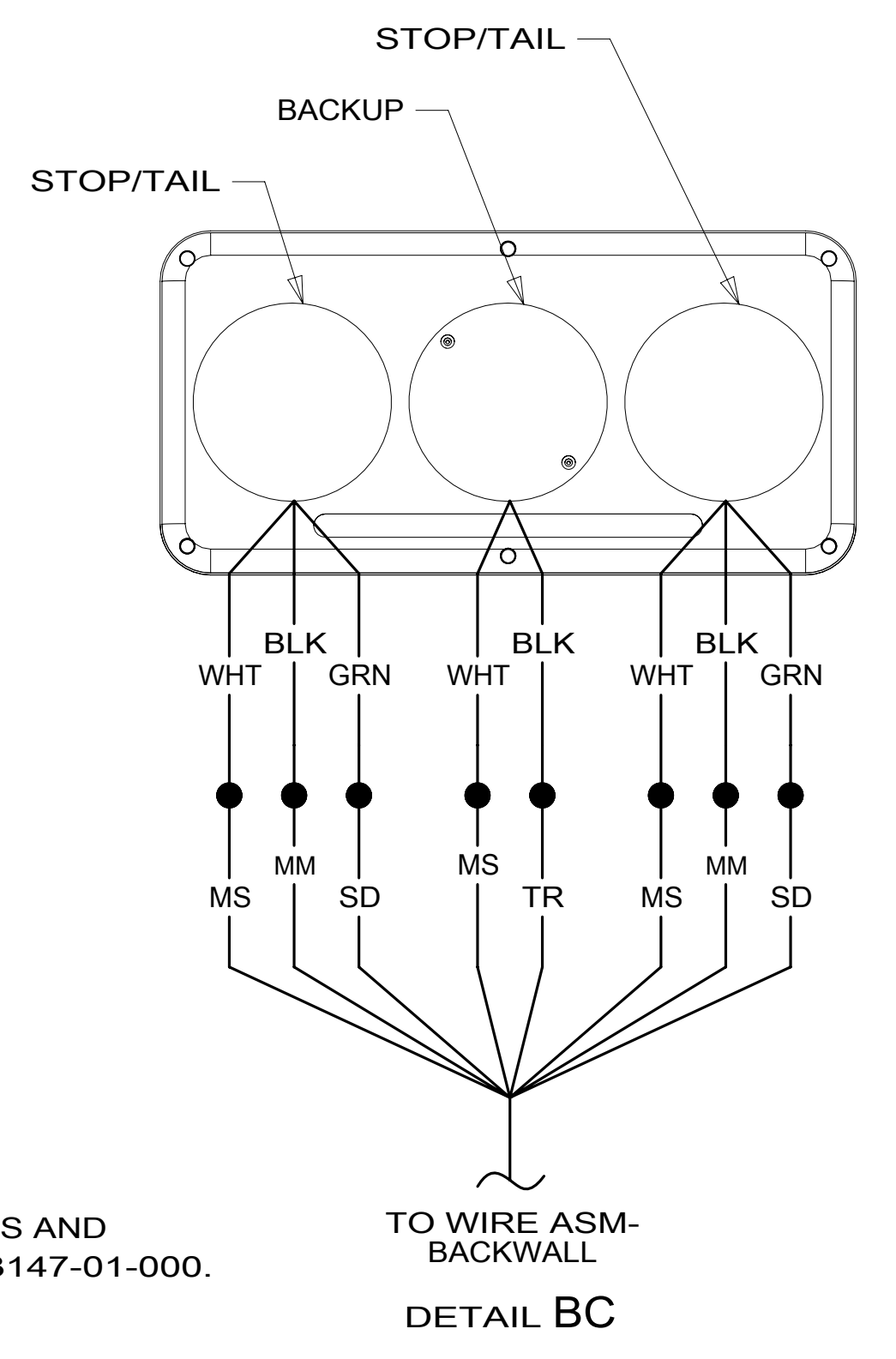
A



VIEW BA



VIEW BB



2 TAIL LAMP TO BE INSTALLED WITH WIRES DOWN.

1. GATHER ALL EXCESS WIRE AFTER MAKING ALL CONNECTIONS AND BUNDLE AND SECURE WITH TIE-WIRE 8343-01-000 OR 93147-01-000.

NOTES:

FOR ELECTRICAL TORQUE SPECIFICATIONS SEE DWG NO. 128783-01-000

FOR ELECTRICAL CALLOUTS SEE DWG NO. 121339-01-000

265 CODES/STANDARDS-CSA/CMVSS  
1B1 CODES/STANDARDS USA

DESCRIPTION:		1B1 265	
<b>WIRING INSTL-EXTERIOR LAMPS</b>			
SHEET:	ITEM/PART NO.:	REV	
2 OF 2	000155328 / 32630501000		

8 7 6 5 4 3 2 1 24-Jan-2019