

4. AT MINIMUM ALL WIRES TO BE SUPPORTED AND SECURED PER CODE REQUIREMENTS. USE CLAMP 10495 OR 10497 OR WIRE TIE 8343 OR 108046 AND SCREW G67-XX-XXX OR G56-XX-XXX AS APPROPRIATE FOR INSTALLATION.
- 3 WITHOUT INVERTER THROW IN #3 (PUR-2) CONNECTS TO (PUR) FROM LOAD CENTER.
- 2 WIRE ROUTED THROUGH FLOOR IN THIS AREA.
1. WIRES ROUTED UNDER FLOOR.
- NOTES:

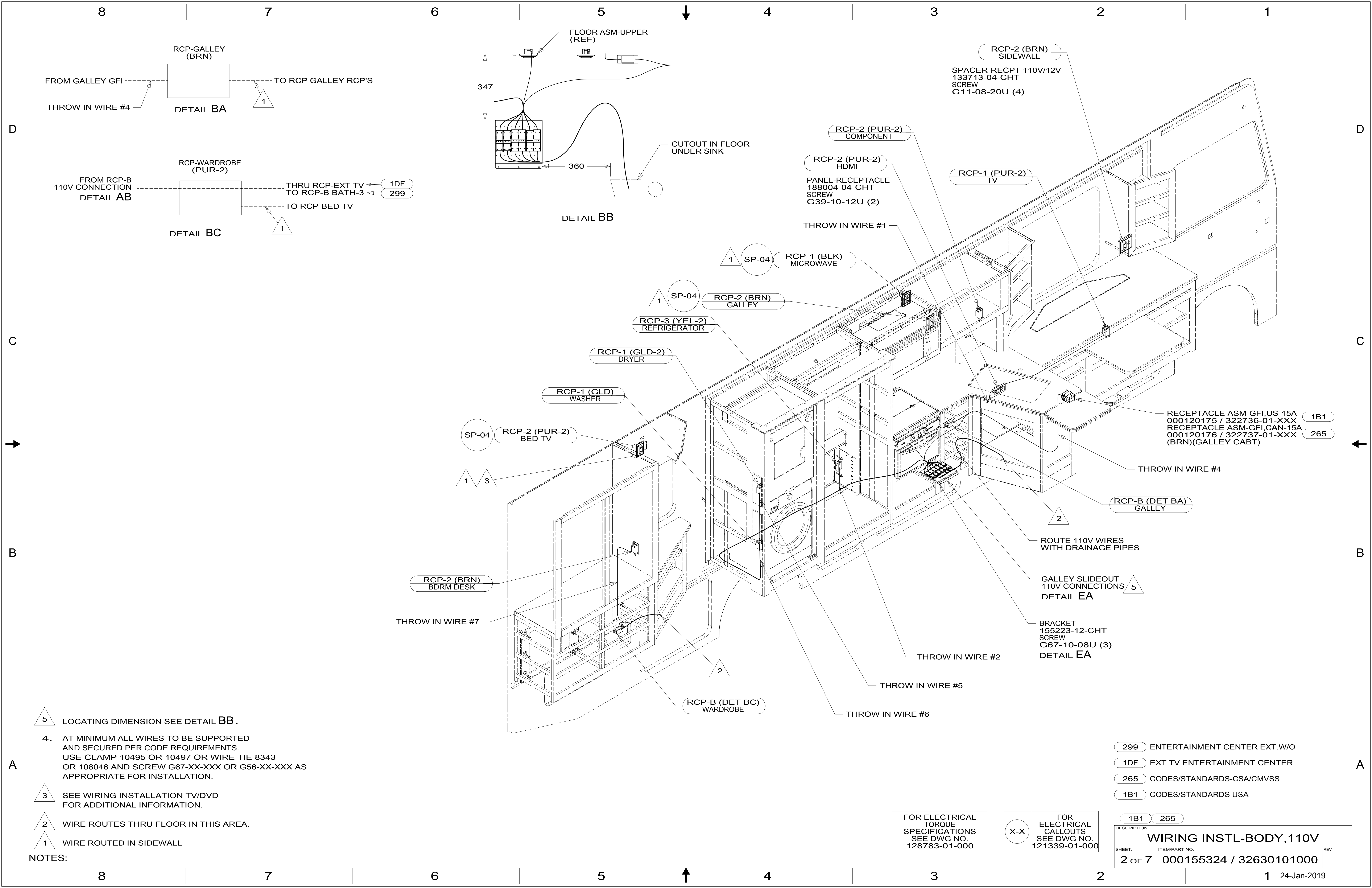
FOR ELECTRICAL TORQUE SPECIFICATIONS SEE DWG NO. 128783-01-000

FOR ELECTRICAL CALLOUTS SEE DWG NO. 121339-01-000

- 265 CODES/STANDARDS-CSA/CMVSS
- 1B1 CODES/STANDARDS USA
- 1B1 265

WINNEBAGO
COPYRIGHT 2016 WINNEBAGO INDUSTRIES, INC.

DSNR:	ALL DIMENSIONS ARE IN MILLIMETERS	
DFFR:	MATERIAL:	
UNSPECIFIED TOLERANCES:	WHOLE DIM (X) :	3
ONE-PLACE (X.X) :	TWO-PLACE (X.XX) :	0.50
ANGLE :		1°
REFER TO ES0018 FOR FASTENER TIGHTENING GUIDELINES	WEIGHT: (LBS)	FIRST USED: 19 F33C
DESCRIPTION: WIRING INSTL-BODY, 110V		
SHEET: 1 OF 7	ITEM/PART NO: 000155324 / 32630101000	REV:
REF:	1	24-Jan-2019



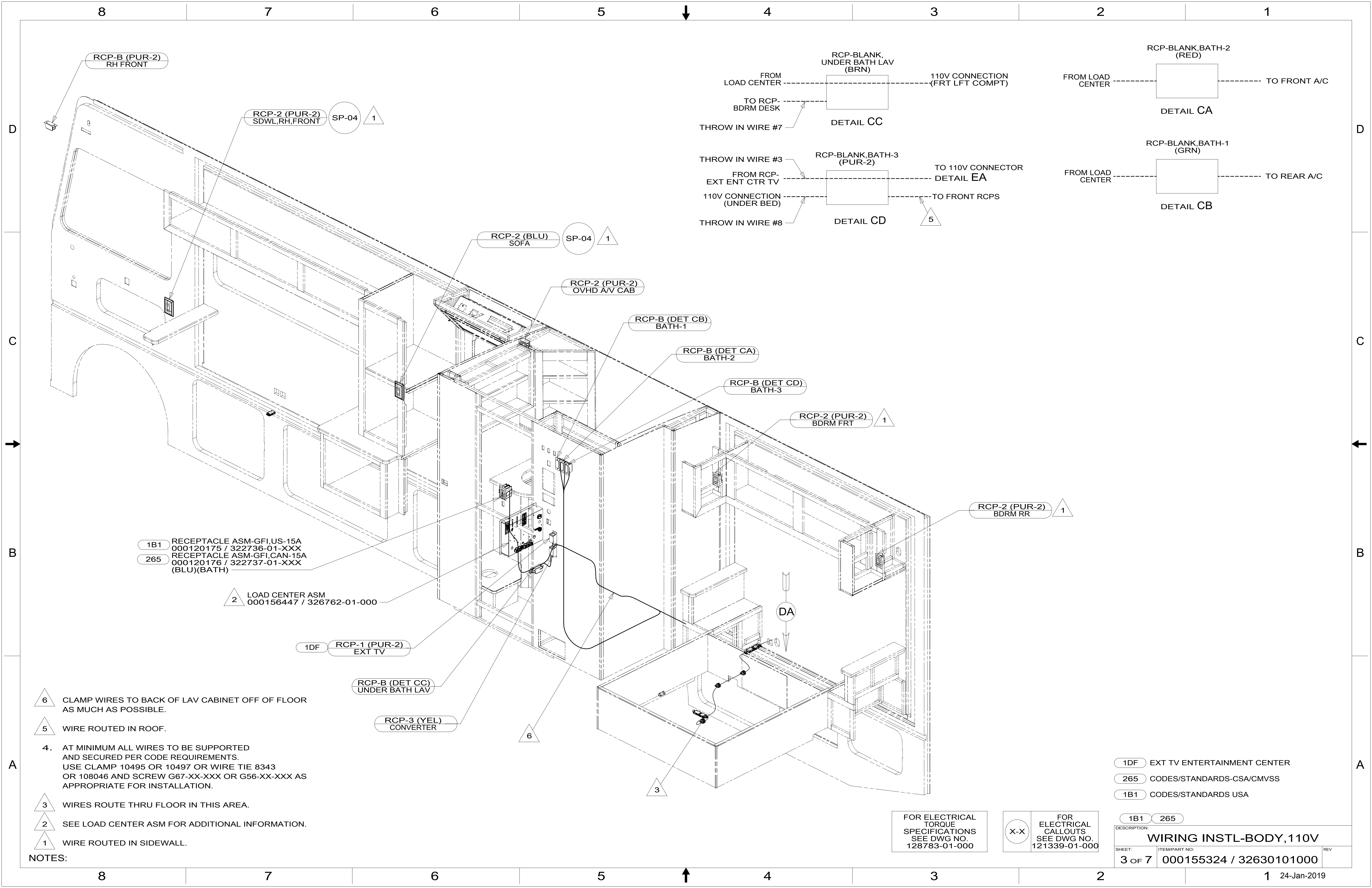
- NOTES:
- 5 LOCATING DIMENSION SEE DETAIL BB.
 - 4. AT MINIMUM ALL WIRES TO BE SUPPORTED AND SECURED PER CODE REQUIREMENTS. USE CLAMP 10495 OR 10497 OR WIRE TIE 8343 OR 108046 AND SCREW G67-XX-XXX OR G56-XX-XXX AS APPROPRIATE FOR INSTALLATION.
 - 3 SEE WIRING INSTALLATION TV/DVD FOR ADDITIONAL INFORMATION.
 - 2 WIRE ROUTES THRU FLOOR IN THIS AREA.
 - 1 WIRE ROUTED IN SIDEWALL

FOR ELECTRICAL TORQUE SPECIFICATIONS SEE DWG NO. 128783-01-000

FOR ELECTRICAL CALLOUTS SEE DWG NO. 121339-01-000

- 299 ENTERTAINMENT CENTER EXT.W/O
- 1DF EXT TV ENTERTAINMENT CENTER
- 265 CODES/STANDARDS-CSA/CMVSS
- 1B1 CODES/STANDARDS USA

DESCRIPTION:		1B1 265	
WIRING INSTL-BODY, 110V			
SHEET:	ITEM/PART NO.:	REV	
2 OF 7	000155324 / 32630101000		



RCP-B (PUR-2)
RH FRONT

RCP-2 (PUR-2)
SDWL,RH,FRONT

RCP-2 (BLU)
SOFA

RCP-2 (PUR-2)
OVHD A/V CAB

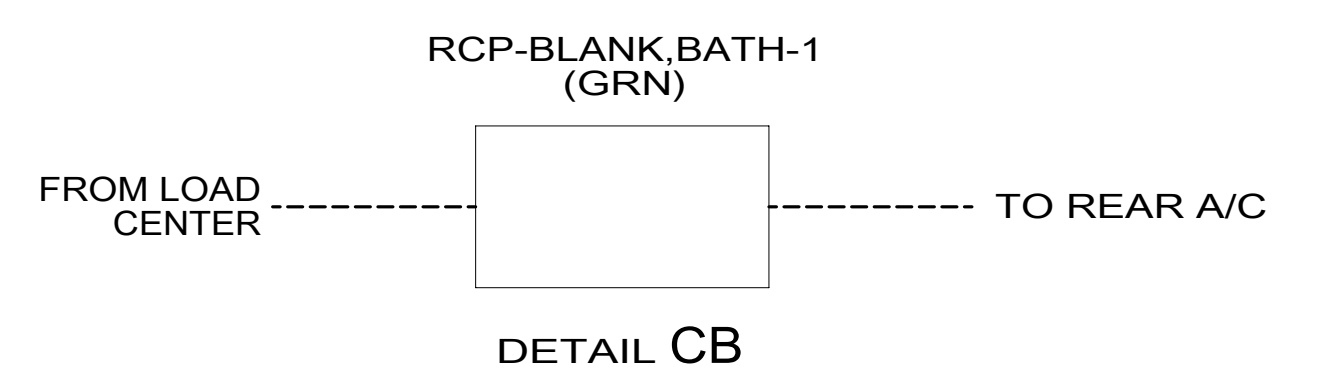
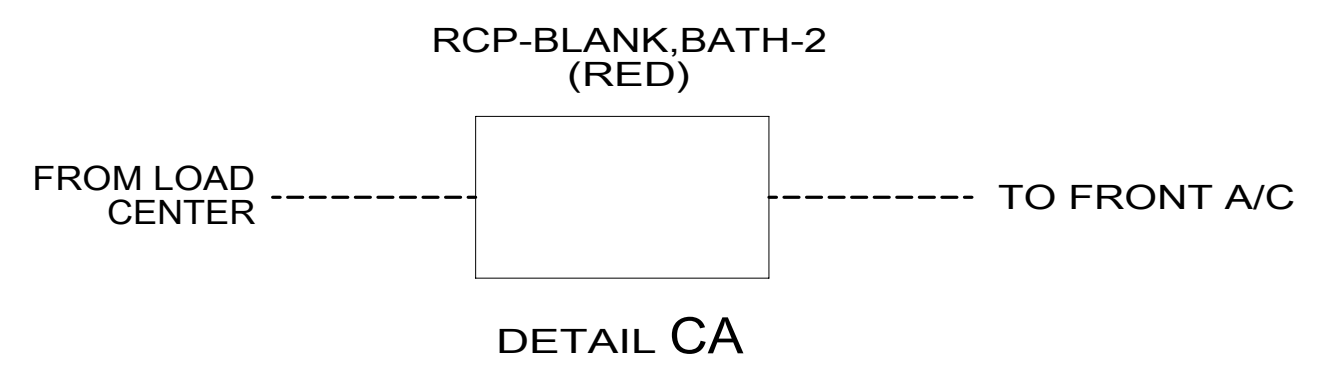
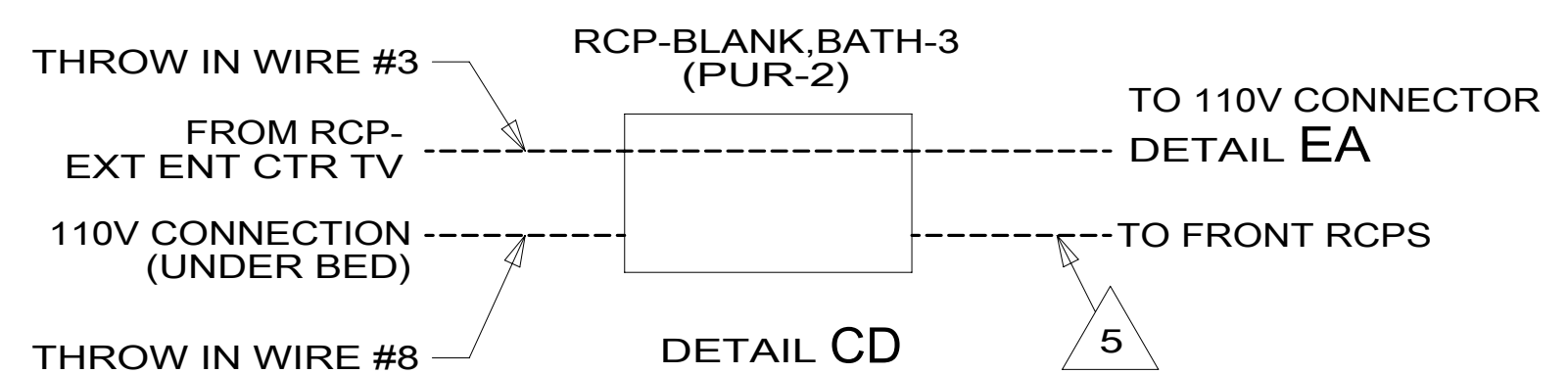
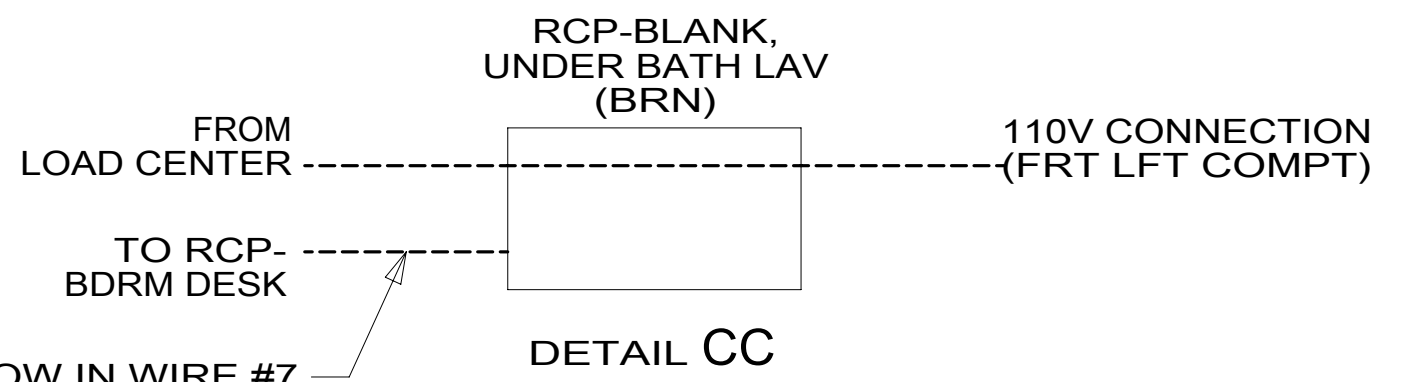
RCP-B (DET CB)
BATH-1

RCP-B (DET CA)
BATH-2

RCP-B (DET CD)
BATH-3

RCP-2 (PUR-2)
BDRM FRT

RCP-2 (PUR-2)
BDRM RR



1B1 RECEPTACLE ASM-GFI,US-15A
000120175 / 322736-01-XXX
265 RECEPTACLE ASM-GFI,CAN-15A
000120176 / 322737-01-XXX
(BLU)(BATH)

2 LOAD CENTER ASM
000156447 / 326762-01-000

1DF RCP-1 (PUR-2)
EXT TV

RCP-B (DET CC)
UNDER BATH LAV

RCP-3 (YEL)
CONVERTER

6 CLAMP WIRES TO BACK OF LAV CABINET OFF OF FLOOR AS MUCH AS POSSIBLE.

5 WIRE ROUTED IN ROOF.

4. AT MINIMUM ALL WIRES TO BE SUPPORTED AND SECURED PER CODE REQUIREMENTS. USE CLAMP 10495 OR 10497 OR WIRE TIE 8343 OR 108046 AND SCREW G67-XX-XXX OR G56-XX-XXX AS APPROPRIATE FOR INSTALLATION.

3 WIRES ROUTE THRU FLOOR IN THIS AREA.

2 SEE LOAD CENTER ASM FOR ADDITIONAL INFORMATION.

1 WIRE ROUTED IN SIDEWALL.

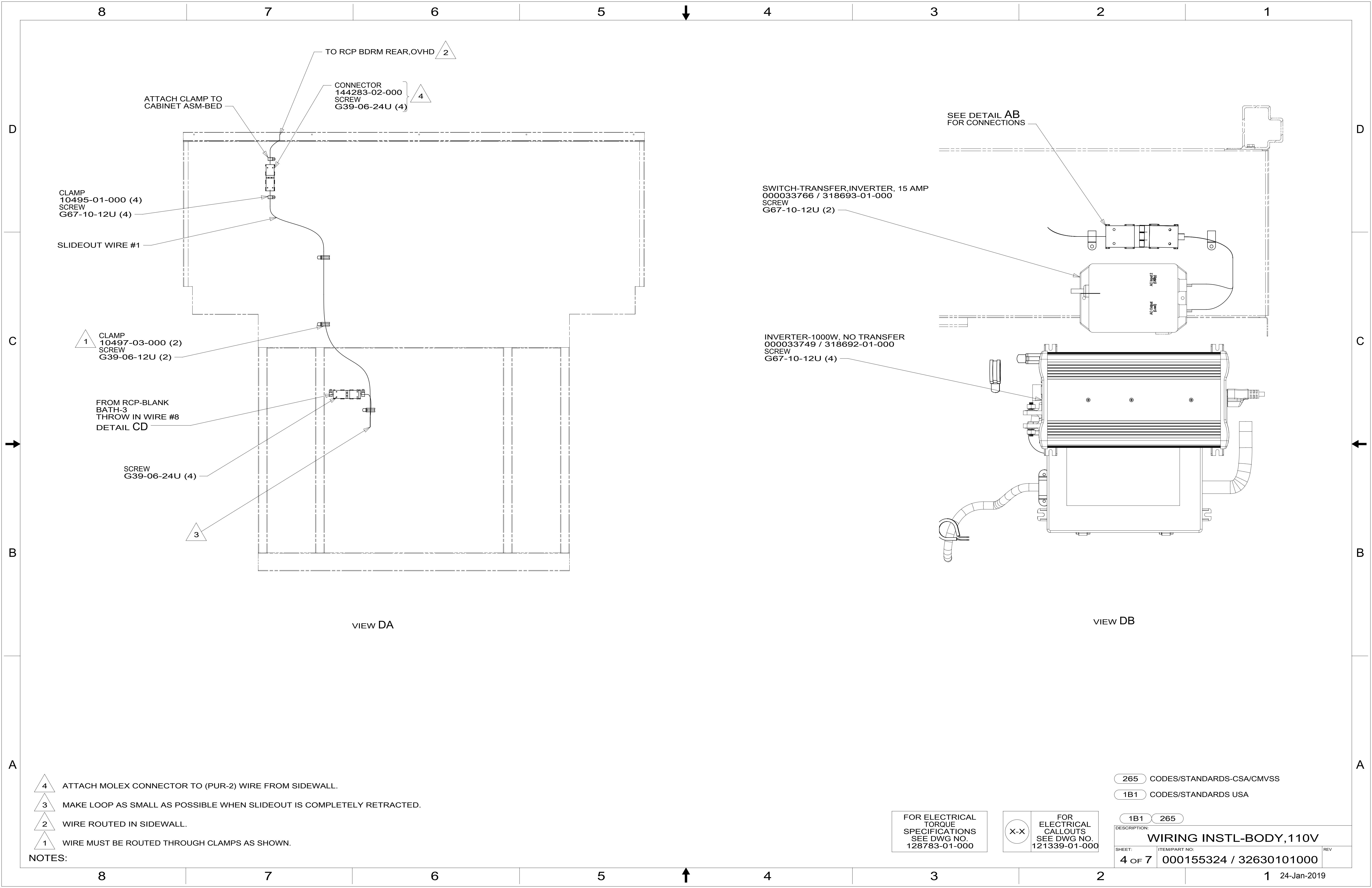
NOTES:

1DF EXT TV ENTERTAINMENT CENTER
265 CODES/STANDARDS-CSA/CMVSS
1B1 CODES/STANDARDS USA

FOR ELECTRICAL TORQUE SPECIFICATIONS SEE DWG NO. 128783-01-000

FOR ELECTRICAL CALLOUTS SEE DWG NO. 121339-01-000

DESCRIPTION:	1B1 265	
WIRING INSTL-BODY, 110V		
SHEET:	ITEM/PART NO:	REV
3 OF 7	000155324 / 32630101000	



TO RCP BDRM REAR,OVHD 2

CONNECTOR
144283-02-000
SCREW
G39-06-24U (4) 4

ATTACH CLAMP TO
CABINET ASM-BED

CLAMP
10495-01-000 (4)
SCREW
G67-10-12U (4)

SLIDEOUT WIRE #1

1 CLAMP
10497-03-000 (2)
SCREW
G39-06-12U (2)

FROM RCP-BLANK
BATH-3
THROW IN WIRE #8
DETAIL CD

SCREW
G39-06-24U (4)

3

VIEW DA

SEE DETAIL AB
FOR CONNECTIONS

SWITCH-TRANSFER,INVERTER, 15 AMP
000033766 / 318693-01-000
SCREW
G67-10-12U (2)

INVERTER-1000W, NO TRANSFER
000033749 / 318692-01-000
SCREW
G67-10-12U (4)

VIEW DB

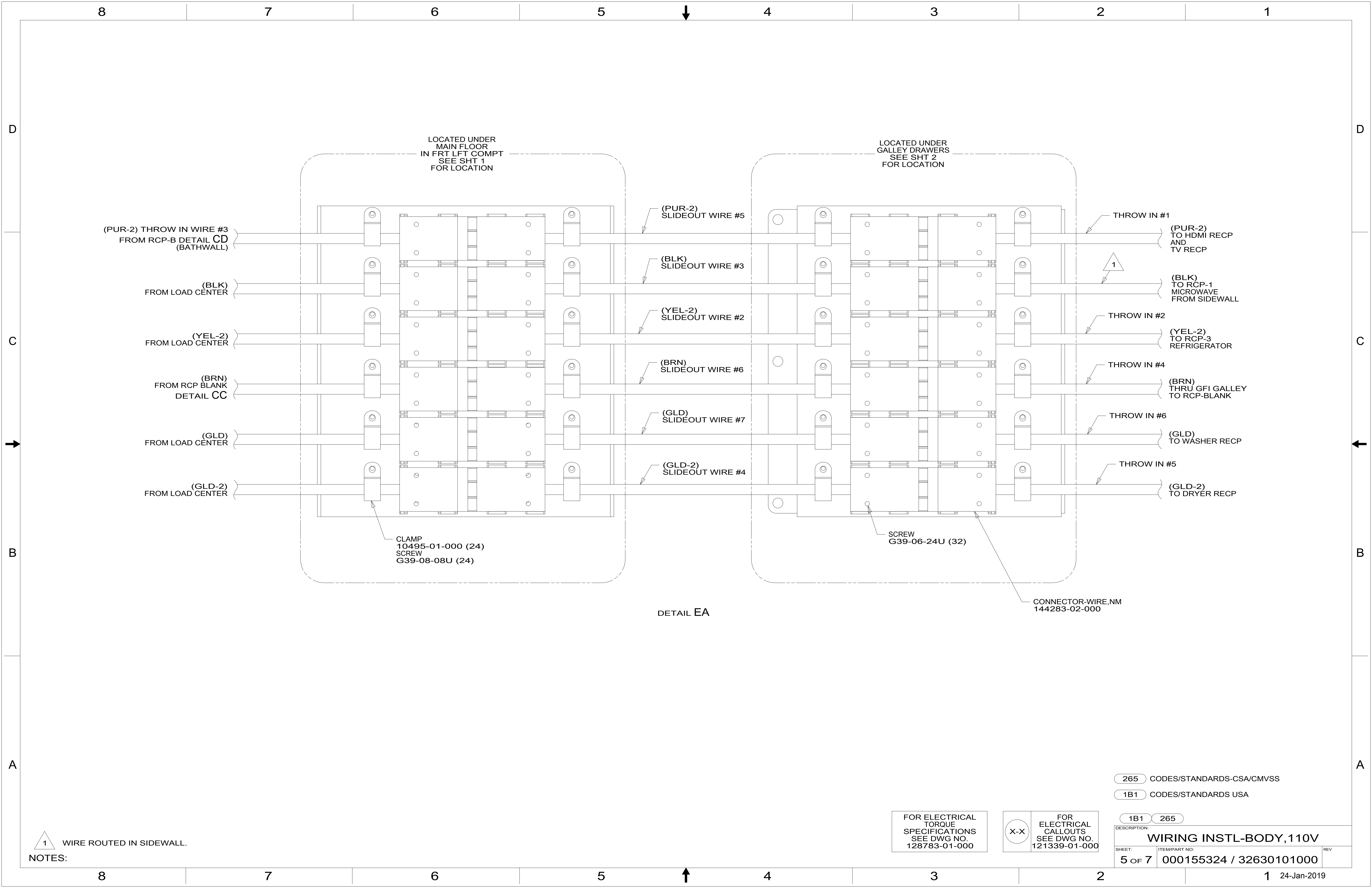
- NOTES:
- 4 ATTACH MOLEX CONNECTOR TO (PUR-2) WIRE FROM SIDEWALL.
 - 3 MAKE LOOP AS SMALL AS POSSIBLE WHEN SLIDEOUT IS COMPLETELY RETRACTED.
 - 2 WIRE ROUTED IN SIDEWALL.
 - 1 WIRE MUST BE ROUTED THROUGH CLAMPS AS SHOWN.

FOR ELECTRICAL
TORQUE
SPECIFICATIONS
SEE DWG NO.
128783-01-000

FOR
ELECTRICAL
CALLOUTS
SEE DWG NO.
121339-01-000

265 CODES/STANDARDS-CSA/CMVSS
1B1 CODES/STANDARDS USA

1B1 265	
DESCRIPTION: WIRING INSTL-BODY,110V	
SHEET: 4 OF 7	ITEM/PART NO: 000155324 / 32630101000
REV 1 24-Jan-2019	



LOCATED UNDER
MAIN FLOOR
IN FRT LFT COMPT
SEE SHT 1
FOR LOCATION

LOCATED UNDER
GALLEY DRAWERS
SEE SHT 2
FOR LOCATION

(PUR-2) THROW IN WIRE #3
FROM RCP-B DETAIL CD
(BATHWALL)

(BLK)
FROM LOAD CENTER

(YEL-2)
FROM LOAD CENTER

(BRN)
FROM RCP BLANK
DETAIL CC

(GLD)
FROM LOAD CENTER

(GLD-2)
FROM LOAD CENTER

(PUR-2)
SLIDEOUT WIRE #5

(BLK)
SLIDEOUT WIRE #3

(YEL-2)
SLIDEOUT WIRE #2

(BRN)
SLIDEOUT WIRE #6

(GLD)
SLIDEOUT WIRE #7

(GLD-2)
SLIDEOUT WIRE #4

THROW IN #1

(PUR-2)
TO HDMI RECP
AND
TV RECP

(BLK)
TO RCP-1
MICROWAVE
FROM SIDEWALL

THROW IN #2

(YEL-2)
TO RCP-3
REFRIGERATOR

THROW IN #4

(BRN)
THRU GFI GALLEY
TO RCP-BLANK

THROW IN #6

(GLD)
TO WASHER RECP

THROW IN #5

(GLD-2)
TO DRYER RECP

CLAMP
10495-01-000 (24)
SCREW
G39-08-08U (24)

SCREW
G39-06-24U (32)

CONNECTOR-WIRE,NM
144283-02-000

DETAIL EA

1 WIRE ROUTED IN SIDEWALL.

FOR ELECTRICAL
TORQUE
SPECIFICATIONS
SEE DWG NO.
128783-01-000

FOR
ELECTRICAL
CALLOUTS
SEE DWG NO.
121339-01-000

265 CODES/STANDARDS-CSA/CMVSS
1B1 CODES/STANDARDS USA

1B1 265
DESCRIPTION:
WIRING INSTL-BODY, 110V

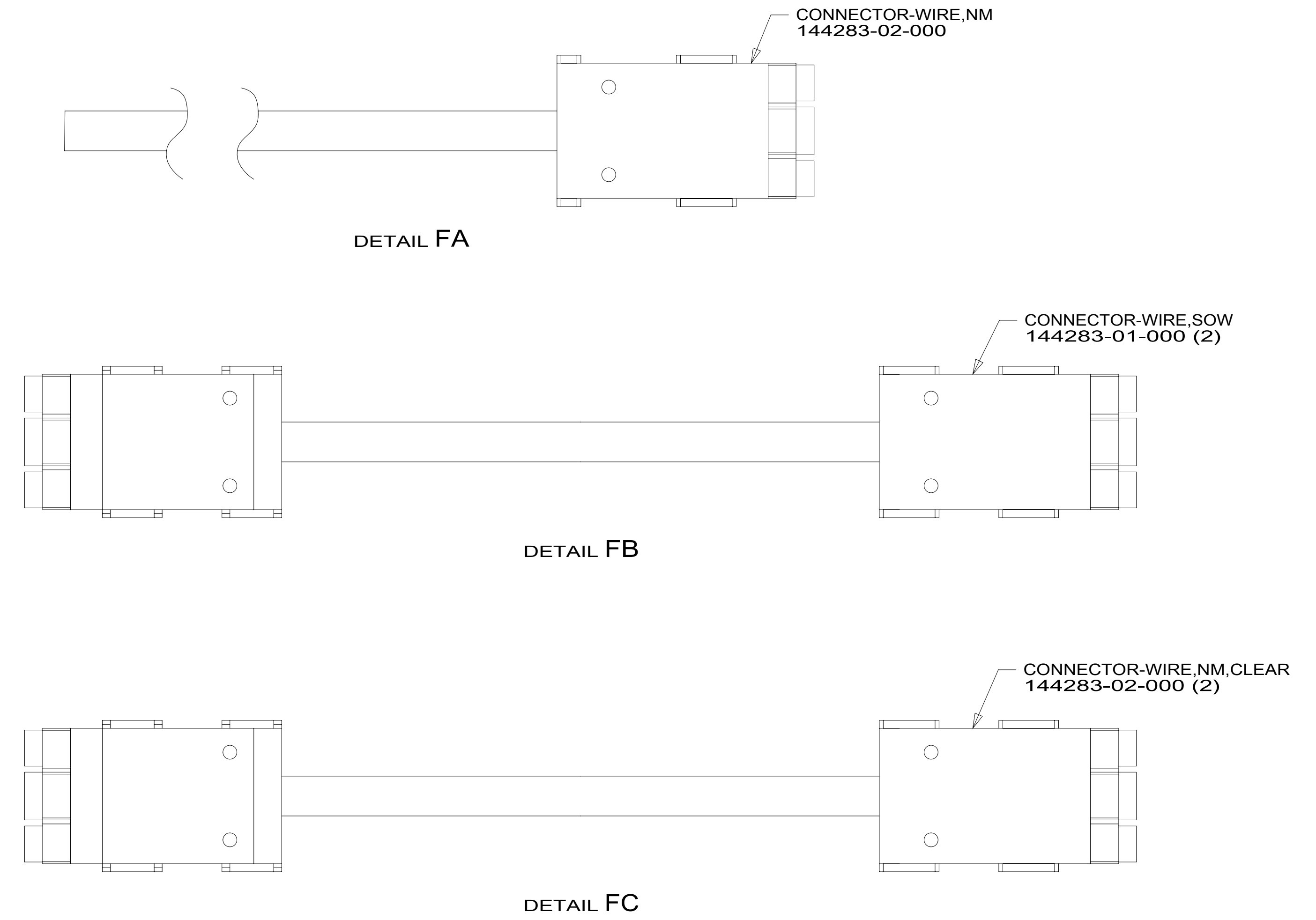
SHEET: 5 OF 7 ITEM/PART NO: 000155324 / 32630101000 REV

1 24-Jan-2019

RED	1B1	136135-07-059	
	265	136136-07-059	
YEL	1B1	136131-05-016	
	265	136134-05-016	
YEL-2	1B1	136131-13-089	3
	265	136134-13-089	3
BLK	1B1	136131-06-089	3
	265	136134-06-089	3
BRN	1B1	136131-03-090	3
	265	136134-03-090	3
BLU	1B1	136131-02-060	3
	265	136134-02-060	3
GRN	1B1	136135-08-059	
	265	136136-08-059	
PUR	1B1	136131-04-073	3
	265	136134-04-073	3
WHT	1B1	136135-09-054	
	265	136136-09-054	
MAIN	1B1	136139-01-072	6
	265	136140-01-072	6
GROUND MAIN		136145-05-068	
GROUND ATS		136145-01-015	
GLD	1B1	136131-10-089	3
	265	136134-10-089	3
GLD-2	1B1	136131-20-089	3
	265	136134-20-089	3

THROW IN WIRE #1	1B1	136131-12-055	3
	265	136134-12-055	3
THROW IN WIRE #2	1B1	136131-13-020	3
	265	136134-13-020	3
THROW IN WIRE #3	1B1	136131-12-250	5
	265	136134-12-250	5
THROW IN WIRE #4	1B1	136131-03-054	3
	265	136134-03-054	3
THROW IN WIRE #5	1B1	136131-20-044	3
	265	136134-20-044	3
THROW IN WIRE #6	1B1	136131-10-037	3
	265	136134-10-037	3
THROW IN WIRE #7	1B1	136131-03-070	3
	265	136134-03-070	3
THROW IN WIRE #8	1B1	136131-12-055	3
	265	136134-12-055	3

SLIDEOUT WIRE #1		136151-12-026	4
SLIDEOUT WIRE #2		136151-13-022	4
SLIDEOUT WIRE #3		136151-06-022	4
SLIDEOUT WIRE #4		136151-20-022	4
SLIDEOUT WIRE #5		136151-12-022	4
SLIDEOUT WIRE #6		136151-03-022	4
SLIDEOUT WIRE #7		136151-10-022	4



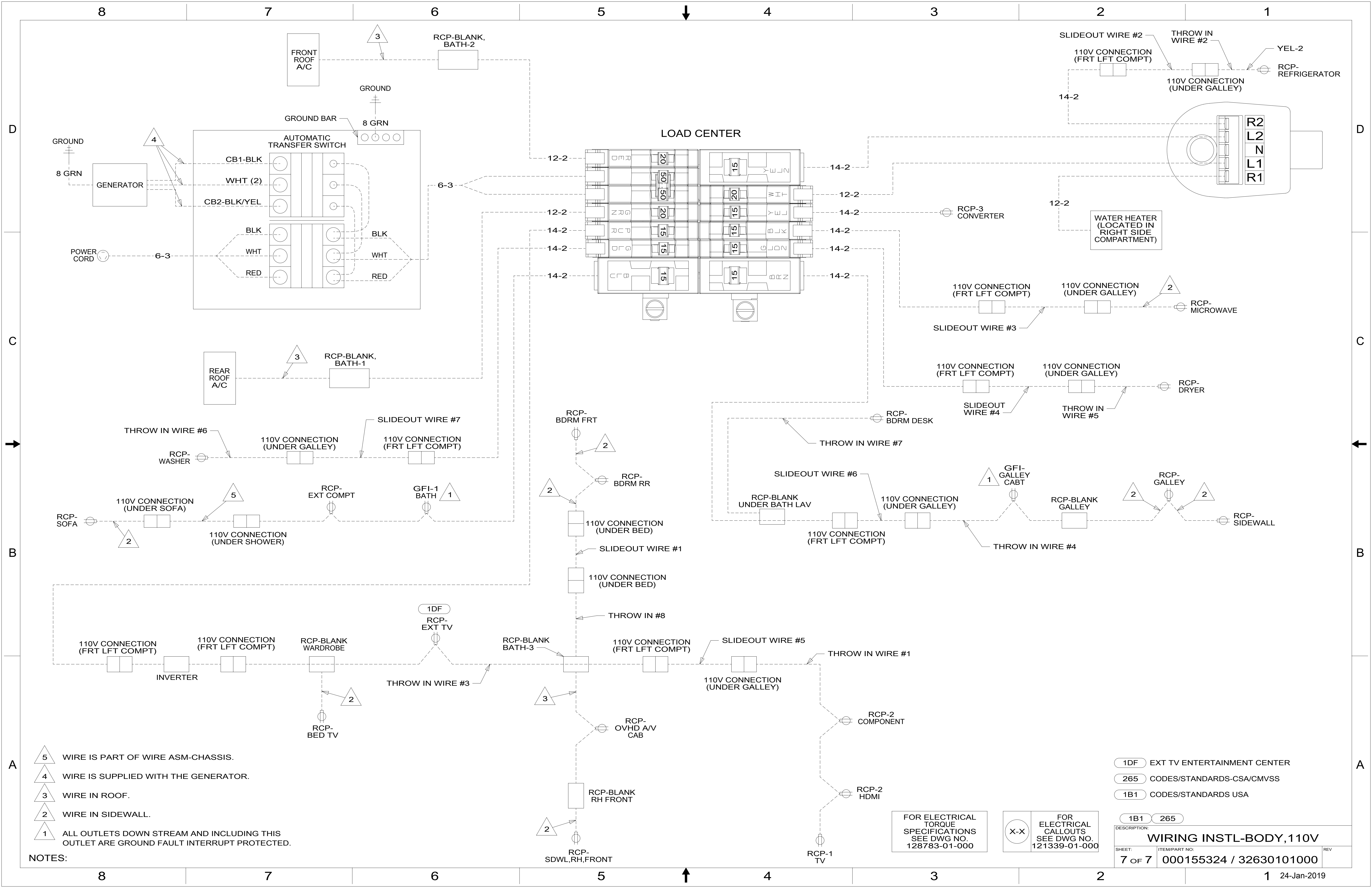
- 6 ATTACH ONE END OF MAIN TO LOAD CENTER. COVER OTHER END OF MAIN CABLE ASM WITH 1000 MM OF CONDUIT 091234-02-000. SECURE WITH TAPE 8363-01-000.
- 5 SEE DETAIL FC FOR CONNECTOR INSTALLATION.
- 4 SEE DETAIL FB FOR CONNECTOR INSTALLATION.
- 3 SEE DETAIL FA FOR CONNECTOR INSTALLATION.
2. SECURE WIRES TO BACKSIDE OF LOAD CENTER WITH WIRE TIE 116673-01-000.
1. ALL GROUNDS WIRES TO BE COVERED WITH TUBING 8041-02-000.

265 CODES/STANDARDS-CSA/CMVSS
 1B1 CODES/STANDARDS USA

FOR ELECTRICAL TORQUE SPECIFICATIONS SEE DWG NO. 128783-01-000

FOR ELECTRICAL CALLOUTS SEE DWG NO. 121339-01-000

DESCRIPTION:	1B1 265
WIRING INSTL-BODY, 110V	
SHEET:	6 OF 7
ITEM/PART NO.:	000155324 / 32630101000
REV	



- NOTES:
- 5 WIRE IS PART OF WIRE ASM-CHASSIS.
 - 4 WIRE IS SUPPLIED WITH THE GENERATOR.
 - 3 WIRE IN ROOF.
 - 2 WIRE IN SIDEWALL.
 - 1 ALL OUTLETS DOWN STREAM AND INCLUDING THIS OUTLET ARE GROUND FAULT INTERRUPT PROTECTED.

FOR ELECTRICAL TORQUE SPECIFICATIONS SEE DWG NO. 128783-01-000

FOR ELECTRICAL CALLOUTS SEE DWG NO. 121339-01-000

1DF	EXT TV ENTERTAINMENT CENTER
265	CODES/STANDARDS-CSA/CMVSS
1B1	CODES/STANDARDS USA
1B1	265
DESCRIPTION:	
WIRING INSTL-BODY, 110V	
SHEET:	ITEM/PART NO:
7 OF 7	000155324 / 32630101000
REV	
1 24-Jan-2019	