

GROMMET 071015-11-000 (2)

TO SLIDEOUT MODULE

TO COMPT LAMP

9 PIN HSG TO SIDEWALL

CABLE ASM-STARTER (RED) 1

GROMMET 23942-01-000

CABLE ASM-CHASSIS GROUND EXT (BLK) 1

6 PIN HSG TO SLIDEOUT MOTOR MARKED W/ RED TAPE

MP, KD TO STEP DOOR JAMB SWITCH

BATTERY INSTL 000155353 / 326314-01-000

4 PIN HSG TO ELECTRIC STEP

SEAL-TRIM 113452-02-000 (153) 7

FRONT AXLE

TO COMPT LAMP

GROUND DETAIL AA

MAIN DROP TO WIRE ASM-COACH

TO FORD SUPPLIED TAILLAMP CIRCUIT

7 PIN HSG TO TRAILER CONNECTOR

JB, JM, JH, JJ TO FURNACE

6 PIN HSG TO BACKWALL

SEAL-TRIM 113452-02-000 (153) 7

CABLE ASM-GENERATOR (GRN) 1

8 PIN HOUSING TO GENERATOR

GROMMET 23942-01-000 (2)

TO WIRE ASM-IP, MAIN (THRU HOLE IN FLOOR)

BY TO BUSS BAR 6

2 PIN HSG TO DRIVER SEAT CIRCUITS FX, FY

TO WIRE ASM-IP, MAIN (THRU HOLE IN FLOOR)

DATUM 697

WIRE ASM-CHASSIS 000155330 / 326307-01-000

GROMMET 23942-01-000 SEAL

GROMMET 23942-01-000

BATTERY CABLES TO INVERTER

CABLE ASM-COACH BATTERY DISCONNECT SUPPLY (YEL) 1

CABLE ASM-CHASSIS BATTERY DISCONNECT SUPPLY (RED) 1

SEAL-TRIM 113452-02-000 (153) 7

6-PIN HSG TO SLIDEOUT MOTOR MARKED WITH GRN TAPE 4

6 PIN HSG TO SLIDEOUT MOTOR MARKED WITH YEL TAPE 4

FROM CHASSIS BATTERY NEGATIVE TERMINAL

FROM COACH BATTERY NEGATIVE TERMINAL

WIRE ASM-CHASSIS GROUND TERMINALS

NEGATIVE BAR (ON CHASSIS RAIL) BOLT C26-06-12B (2) NUT D29-06-00B (2)

DETAIL AA

- NOTES:
- 7 COVER SHARP EDGES WHERE WIRE CROSSES FRAME RAIL.
  - 6 SEE WIRING INSTL-FRONT END FOR ADDITIONAL INFORMATION.
  - 5 CLAMP 83610-01-000, SCREW G11-10-16U.
  - 4 COIL SLIDEOUT WIRES HERE FOR TRANSPORTATION PURPOSES.
  - 3. ALL DIMENSIONS ARE FROM DATUM UNLESS OTHERWISE SPECIFIED.
  - 2. SECURE CONDUIT 41953, TAB AS REQUIRED, OVER ALL WIRES IN CONTACT WITH SHARP EDGES.
  - 1 SEE BATTERY INSTALLATION FOR ADDITIONAL INFORMATION.

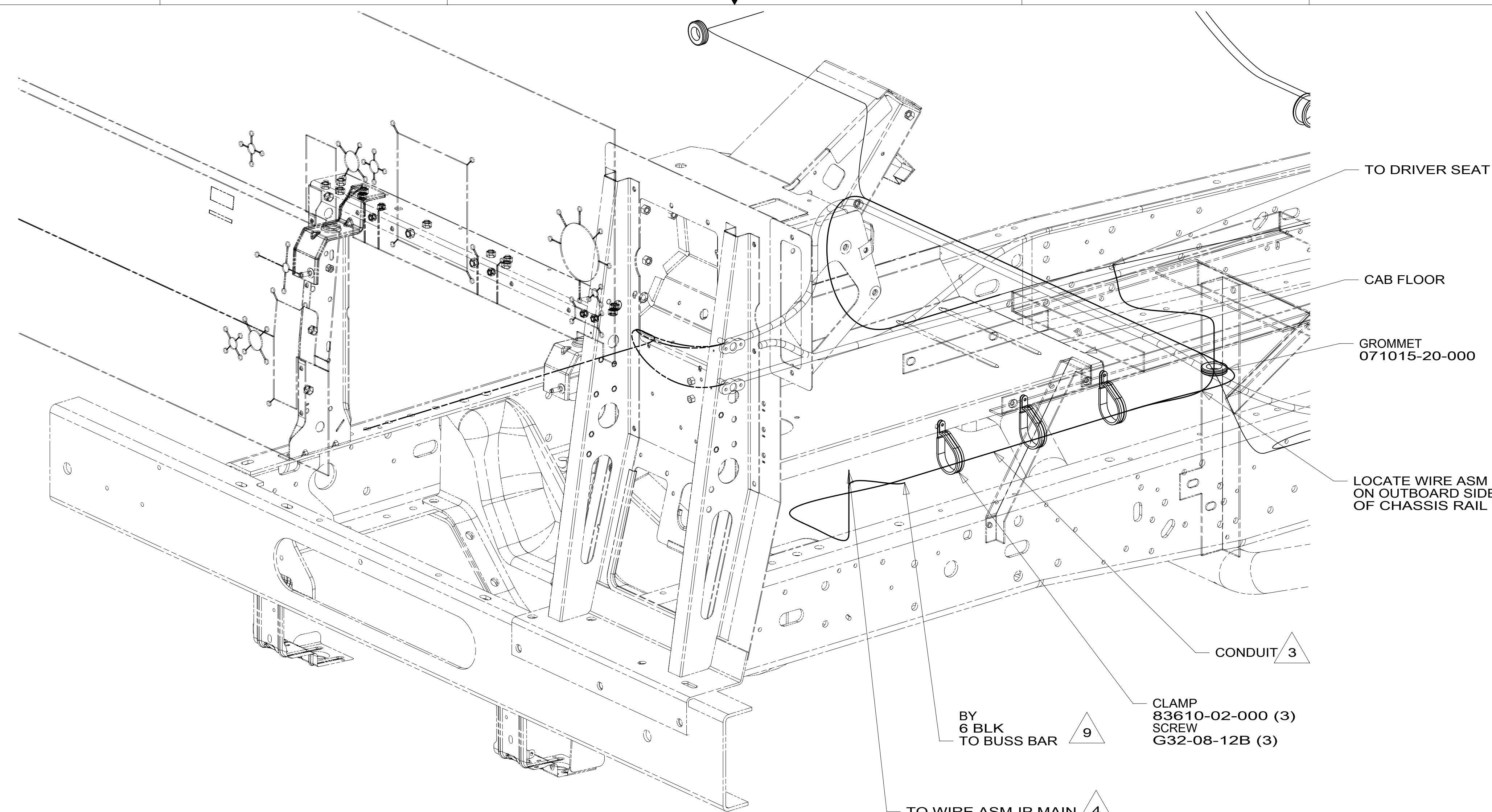
265 CODES/STANDARDS-CSA/CMVSS

1B1 CODES/STANDARDS USA

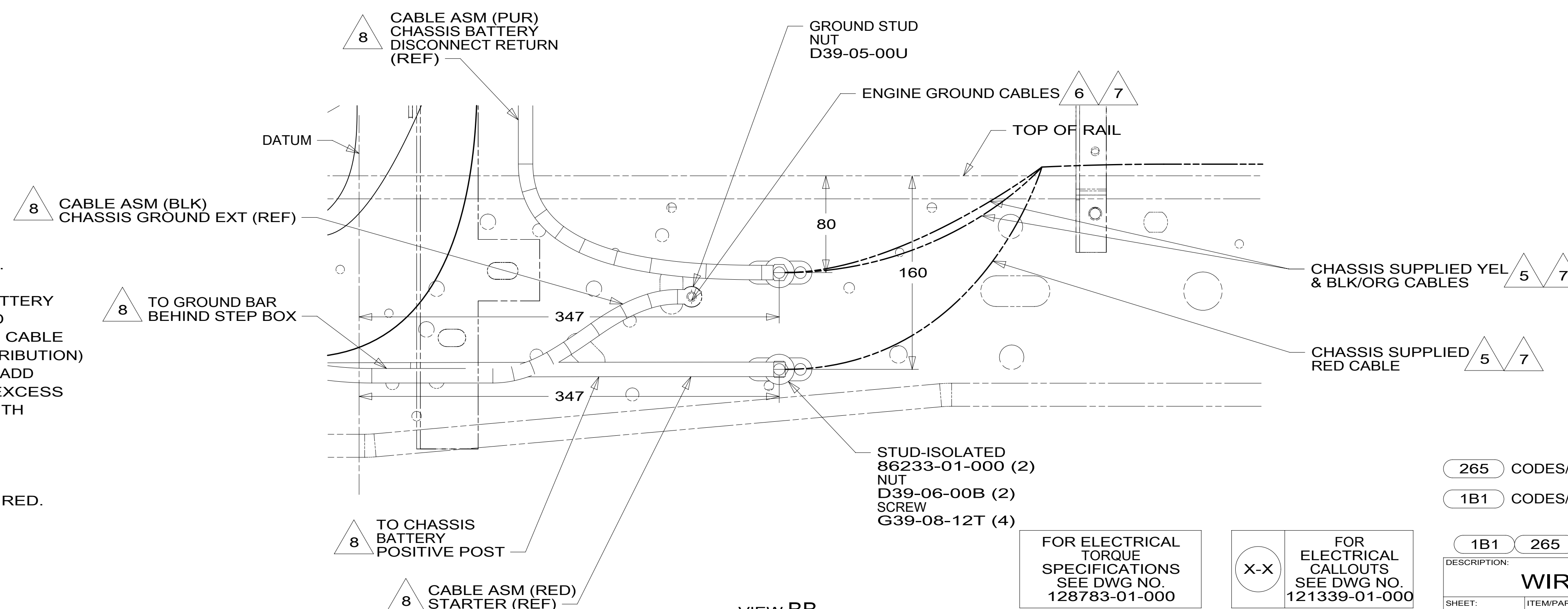
<b>WINNEBAGO</b> COPYRIGHT 2016 WINNEBAGO INDUSTRIES, INC.	
DSNR:	ALL DIMENSIONS ARE IN MILLIMETERS
DFFR:	MATERIAL:
UNSPECIFIED TOLERANCES:	WEIGHT: (LBS)
WHOLE DIM (X) : 3	FIRST USED:
ONE-PLACE (X.X) : 1.5	19 F33C
TWO-PLACE (X.XX) : 0.50	
ANGLE : 1°	
REFER TO ES0018 FOR FASTENER TIGHTENING GUIDELINES	
<b>DESCRIPTION:</b> <b>WIRING INSTL-CHASSIS</b>	
SHEET: 1 OF 2	ITEM/PART NO: 000155321 / 32629901000
REF:	REV:

FOR ELECTRICAL TORQUE SPECIFICATIONS SEE DWG NO. 128783-01-000

FOR ELECTRICAL CALLOUTS SEE DWG NO. 121339-01-000



VIEW BA



VIEW BB

- 9 SEE WIRING INSTL-FRONT END FOR ADDITIONAL INFORMATION.
  - 8 SEE BATTERY INSTL FOR ADDITIONAL INFORMATION.
  - 7 SUPPLIED WITH CHASSIS
  - 6 CUT CHASSIS SUPPLIED BATTERY GROUND CABLE 700MM FROM BATTERY TERMINAL AND ADD TERMINAL 8348-01-000 TO CUT END.
  - 5 CUT CHASSIS SUPPLIED POSITIVE BATTERY CABLE 150MM FROM BATTERY TERMINAL END, DISCARD TERMINAL END AND SEPARATE WIRES. ADD TERMINAL 8348-01-000 AND HEAT SHRINK 176567-04-000 TO RED CABLE (CHASSIS STARTER) AND COMBINE YELLOW (CHASSIS POWER DISTRIBUTION) AND BLACK/ORANGE (CHASSIS ALTERNATOR) WIRES TOGETHER AND ADD TERMINAL 8348-01-000 AND HEAT SHRINK 176567-02-000. COIL EXCESS CABLE ALONG FRAME RAIL JUST BEHIND RADIATOR AND TIE UP WITH TIE-WIRE 8343-04-000.
  - 4 ROUTE WIRE THRU HOLE IN CAB FLOOR.
  - 3 COVER WITH CONDUIT 41953-10-000 AND 41953-11-000 AS REQUIRED.
2. CONNECT CABLES TO COACH SIDE OF BATTERY DISCONNECT WHEN BATTERY DISCONNECT IS USED.
  1. CUT OFF EXCESS END OF WIRE TIE.

NOTES:

265 CODES/STANDARDS-CSA/CMVSS  
 1B1 CODES/STANDARDS USA

FOR ELECTRICAL TORQUE SPECIFICATIONS SEE DWG NO. 128783-01-000

FOR ELECTRICAL CALLOUTS SEE DWG NO. 121339-01-000

1B1 265

DESCRIPTION: <b>WIRING INSTL-CHASSIS</b>		
SHEET: 2 OF 2	ITEM/PART NO: 000155321 / 32629901000	REV