

8

7

6

5



4

3

2

1

CABLE ASM-CHASSIS GND EXT (BLK)		133566-12-028
CABLE ASM-CHASSIS BATTERY DISCONNECT SUPPLY (RED)		141415-32-040
CABLE ASM-COACH BATTERY DISCONNECT SUPPLY (YEL)		141416-52-042
CABLE ASM-COACH BATTERY GND (BLK)		133567-12-008
CABLE ASM-GENERATOR (GRN)		141415-42-072
CABLE ASM-GENERATOR GND (BLK)		133566-12-008
LEVELING SYSTEM POWER CABLE (BLU)	60M	141415-29-021
LEVELING SYSTEM GND CABLE (BLK)	60M	133566-12-008
CABLE ASM-STARTER (RED)		141416-32-030
CABLE ASM-COACH BATTERY FUSE		141416-52-003
CABLE ASM-CHASSIS BATTERY FUSE		141415-32-003
CABLE ASM-INVERTER (ORG)	401	141415-62-018
CABLE ASM-INVERTER GND (BLK)	401	133566-12-022
CABLE ASM-INVERTER CASE GND (GND)	401	136145-05-030
CABLE ASM-INVERTER FUSE (ORG)	401	141415-62-003

- 401 INVERTER-DC/AC, 1000 WATT
- 60M HYDRAULIC LEVEL JACKS-AUTO
- 265 CODES/STANDARDS-CSA/CMVSS
- 1B1 CODES/STANDARDS USA

1B1 265



COPYRIGHT 2016 WINNEBAGO INDUSTRIES, INC.

DSNR:		ALL DIMENSIONS ARE IN MILLIMETERS	
DFFR:		MATERIAL:	
UNSPECIFIED TOLERANCES:			
WHOLE DIM (X)	: 3		
ONE-PLACE (X.X)	: 1.5		
TWO-PLACE (X.XX)	: 0.50		
ANGLE	: 1°		

REFER TO ES0018 FOR FASTENER TIGHTENING GUIDELINES	WEIGHT: (LBS)	FIRST USED:
		18 E27PE

BATTERY INSTL

SHEET:	ITEM/PART NO.:	REV:
1 OF 4	000153155 / 32595501000	

REF: 1 20-Jun-2019

FOR ELECTRICAL TORQUE SPECIFICATIONS SEE DWG NO. 128783-01-000

FOR ELECTRICAL CALLOUTS SEE DWG NO. 121339-01-000

8

7

6

5



4

3

2

1

D

D

C

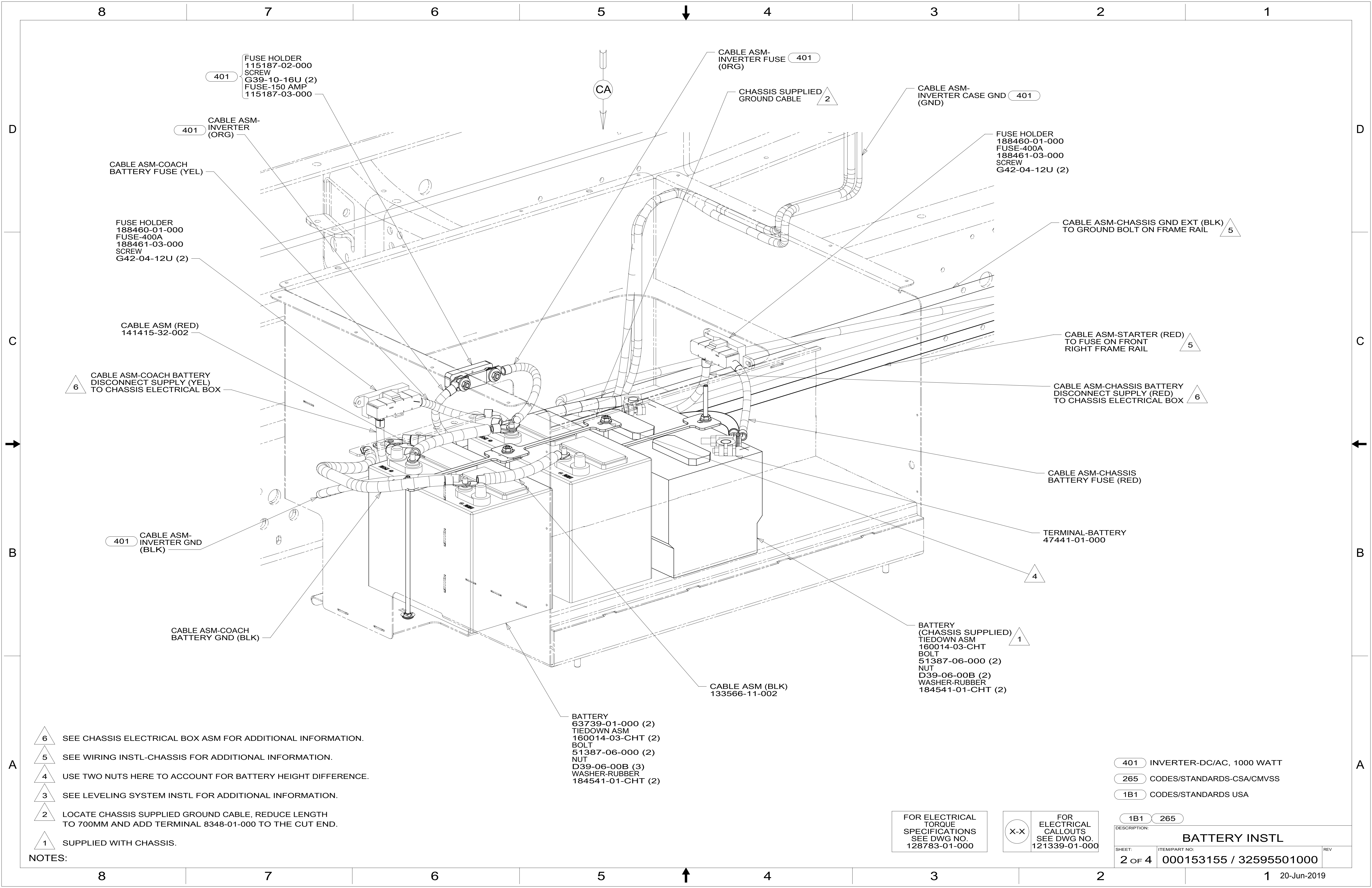
C

B

B

A

A



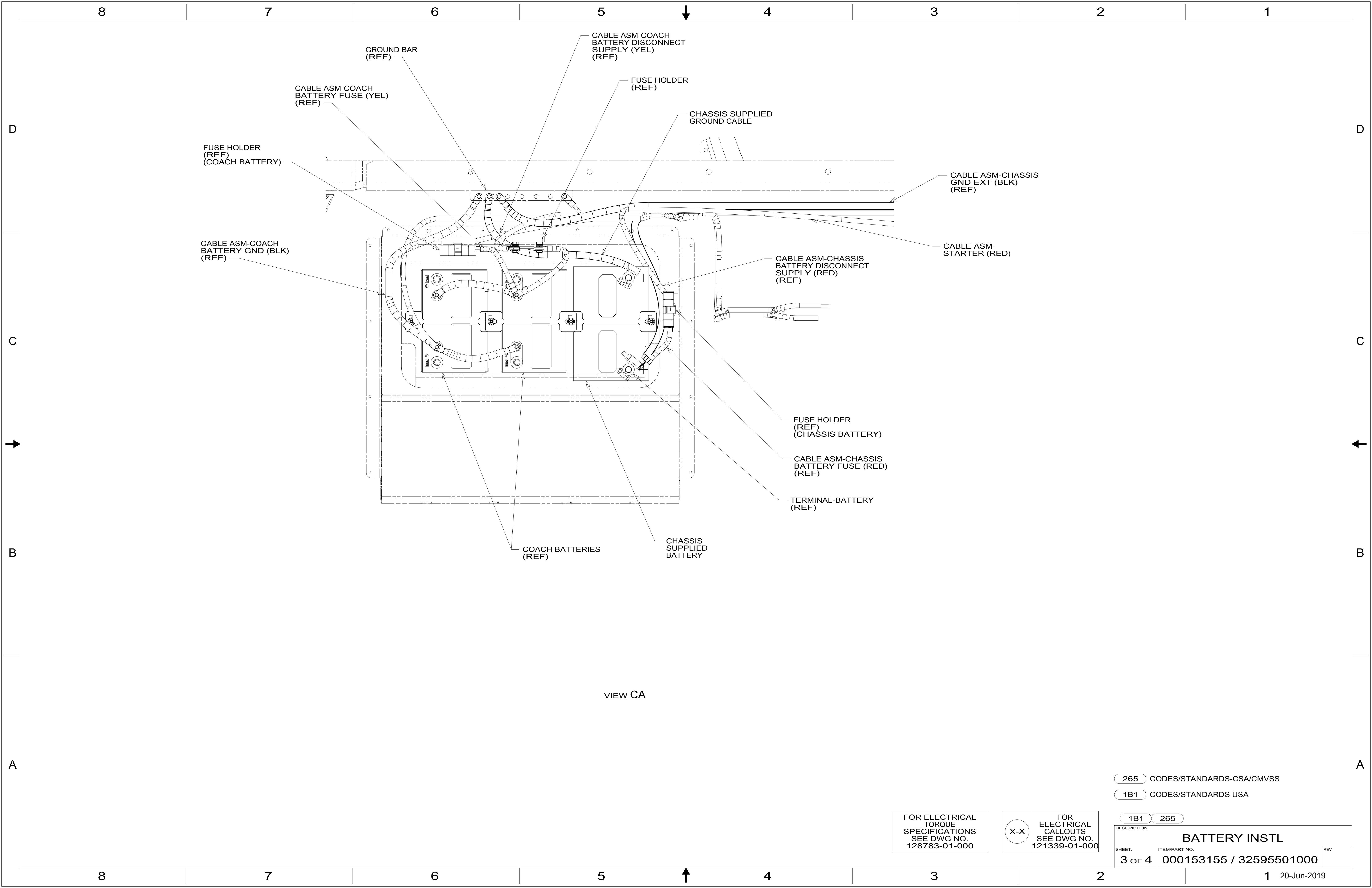
- 6** SEE CHASSIS ELECTRICAL BOX ASM FOR ADDITIONAL INFORMATION.
- 5** SEE WIRING INSTL-CHASSIS FOR ADDITIONAL INFORMATION.
- 4** USE TWO NUTS HERE TO ACCOUNT FOR BATTERY HEIGHT DIFFERENCE.
- 3** SEE LEVELING SYSTEM INSTL FOR ADDITIONAL INFORMATION.
- 2** LOCATE CHASSIS SUPPLIED GROUND CABLE, REDUCE LENGTH TO 700MM AND ADD TERMINAL 8348-01-000 TO THE CUT END.
- 1** SUPPLIED WITH CHASSIS.

- 401** INVERTER-DC/AC, 1000 WATT
- 265** CODES/STANDARDS-CSA/CMVSS
- 1B1** CODES/STANDARDS USA

FOR ELECTRICAL TORQUE SPECIFICATIONS SEE DWG NO. 128783-01-000

FOR ELECTRICAL CALLOUTS SEE DWG NO. 121339-01-000

DESCRIPTION:		<b>BATTERY INSTL</b>	
SHEET:	ITEM/PART NO.:	REV:	
2 OF 4	000153155 / 32595501000		



VIEW CA

265 CODES/STANDARDS-CSA/CMVSS

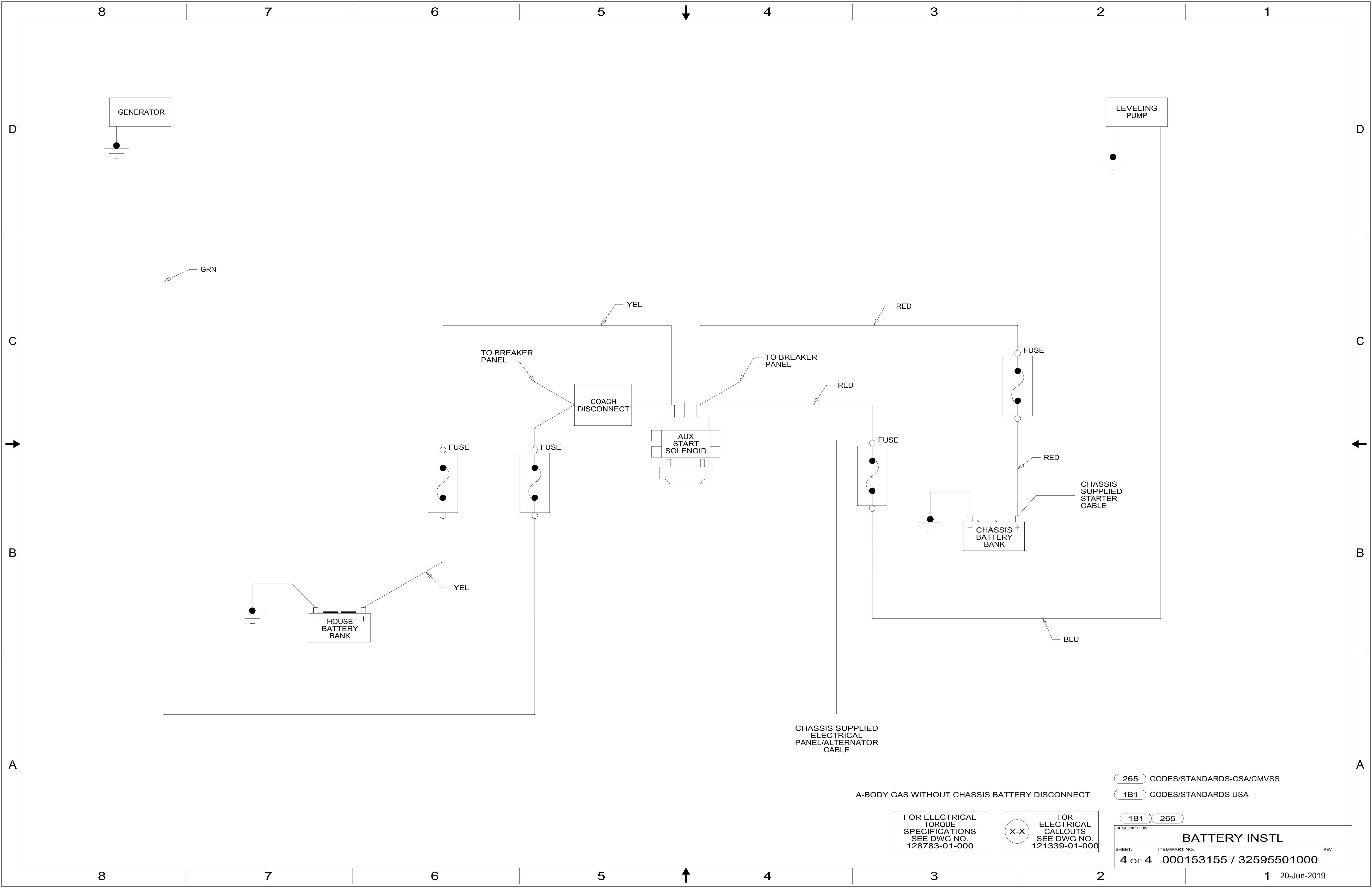
1B1 CODES/STANDARDS USA

1B1 265

FOR ELECTRICAL TORQUE SPECIFICATIONS SEE DWG NO. 128783-01-000

FOR ELECTRICAL CALLOUTS SEE DWG NO. 121339-01-000

DESCRIPTION:		
<b>BATTERY INSTL</b>		
SHEET:	ITEM/PART NO.:	REV
3 OF 4	000153155 / 32595501000	



A-BODY GAS WITHOUT CHASSIS BATTERY DISCONNECT

FOR ELECTRICAL TORQUE SPECIFICATIONS SEE DWG NO. 128783-01-000

FOR ELECTRICAL CALLOUTS SEE DWG NO. 121339-01-000

- 265 CODES/STANDARDS-CSA/CMVSS
- 1B1 CODES/STANDARDS USA

DESCRIPTION:		1B1 265	
<b>BATTERY INSTL</b>			
SHEET:	ITEM/PART NO.:	REV:	
4 OF 4	000153155 / 32595501000		