

8

7

6

5

4

3

2

1



D

D

CABLE ASM-CHASSIS GND EXT (BLK)		133566-12-011
CABLE ASM-CHASSIS BATTERY DISCONNECT SUPPLY (RED)		141415-32-026
CABLE ASM-COACH BATTERY DISCONNECT SUPPLY (YEL)		141416-52-024
CABLE ASM-COACH BATTERY GND (BLK)		133567-12-008
CABLE ASM-GENERATOR (GRN)		141415-42-078
CABLE ASM-GENERATOR GND (BLK)		133566-12-008
LEVELING SYSTEM POWER CABLE (BLU)	60M	141415-29-021
LEVELING SYSTEM GND CABLE (BLK)	60M	133566-12-008
CABLE ASM-STARTER (RED)		141416-32-010
CABLE ASM-COACH BATTERY FUSE		141416-52-003
CABLE ASM-CHASSIS BATTERY FUSE		141415-32-003
CABLE ASM-INVERTER (ORG)	401	141415-62-030
CABLE ASM-INVERTER GND (BLK)	401	133566-12-030
CABLE ASM-INVERTER CASE GND (GND)	401	136145-05-028
CABLE ASM-INVERTER FUSE (ORG)	401	141415-62-003

C

C



B

B

A

A

8

7

6

5

4

3

2

1




FOR ELECTRICAL TORQUE SPECIFICATIONS SEE DWG NO. 128783-01-000

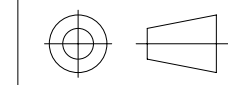
FOR ELECTRICAL CALLOUTS SEE DWG NO. 121339-01-000

- 401 INVERTER-DC/AC, 1000 WATT
- 60M HYDRAULIC LEVEL JACKS-AUTO
- 265 CODES/STANDARDS-CSA/CMVSS
- 1B1 CODES/STANDARDS USA

1B1 265



COPYRIGHT 2016 WINNEBAGO INDUSTRIES, INC.

DSNR:	ALL DIMENSIONS ARE IN MILLIMETERS	
DIFFR:		
UNSPECIFIED TOLERANCES:	MATERIAL:	
WHOLE DIM (X) ± 3		
ONE-PLACE (X.X) ± 1.5		
TWO-PLACE (X.XX) ± 0.50		
ANGLE ± 1°		
REFER TO ES0018 FOR FASTENER TIGHTENING GUIDELINES	WEIGHT: (LBS)	FIRST USED: 18 E32YE
DESCRIPTION: BATTERY INSTL		
SHEET: 1 OF 4	ITEM/PART NO: 000131534 / 32577801000	REV:
REF:		1 20-Jun-2019

8

7

6

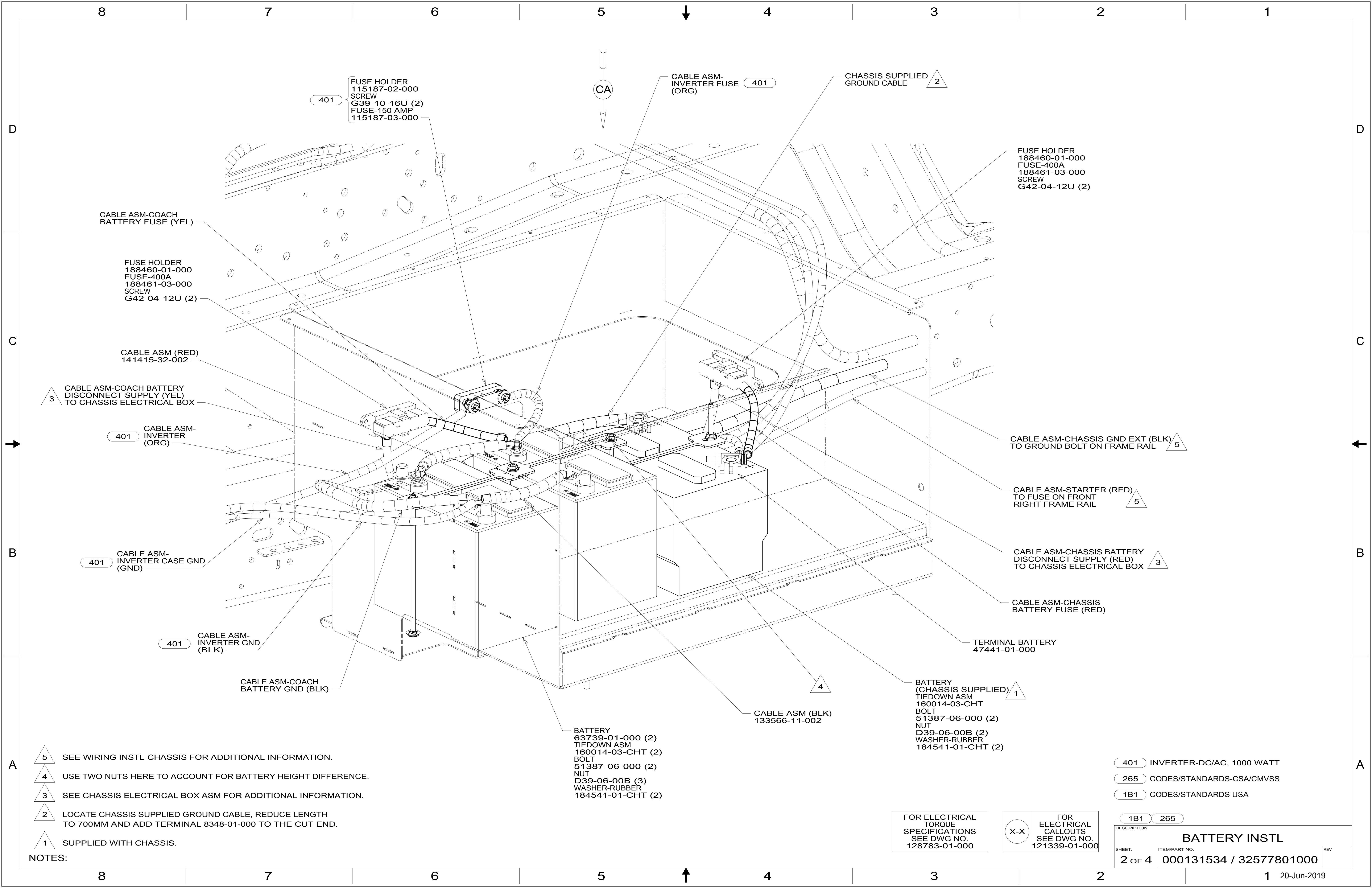
5

4

3

2

1



- 5 SEE WIRING INSTL-CHASSIS FOR ADDITIONAL INFORMATION.
- 4 USE TWO NUTS HERE TO ACCOUNT FOR BATTERY HEIGHT DIFFERENCE.
- 3 SEE CHASSIS ELECTRICAL BOX ASM FOR ADDITIONAL INFORMATION.
- 2 LOCATE CHASSIS SUPPLIED GROUND CABLE, REDUCE LENGTH TO 700MM AND ADD TERMINAL 8348-01-000 TO THE CUT END.
- 1 SUPPLIED WITH CHASSIS.

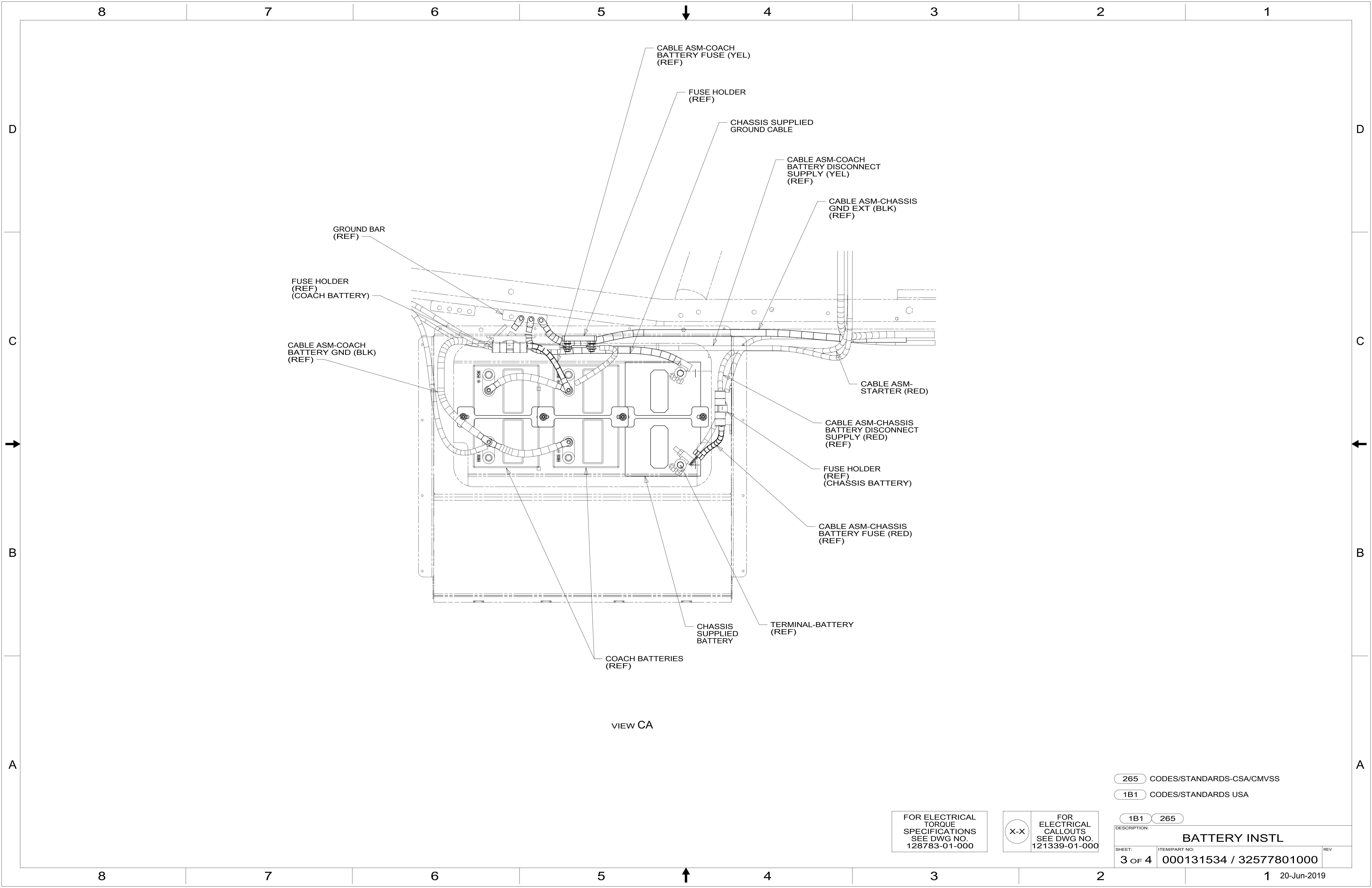
NOTES:

- 401 INVERTER-DC/AC, 1000 WATT
- 265 CODES/STANDARDS-CSA/CMVSS
- 1B1 CODES/STANDARDS USA

FOR ELECTRICAL TORQUE SPECIFICATIONS SEE DWG NO. 128783-01-000

FOR ELECTRICAL CALLOUTS SEE DWG NO. 121339-01-000

DESCRIPTION:		BATTERY INSTL	
SHEET:	ITEM/PART NO.:	REV:	
2 OF 4	000131534 / 32577801000		



VIEW CA

265 CODES/STANDARDS-CSA/CMVSS

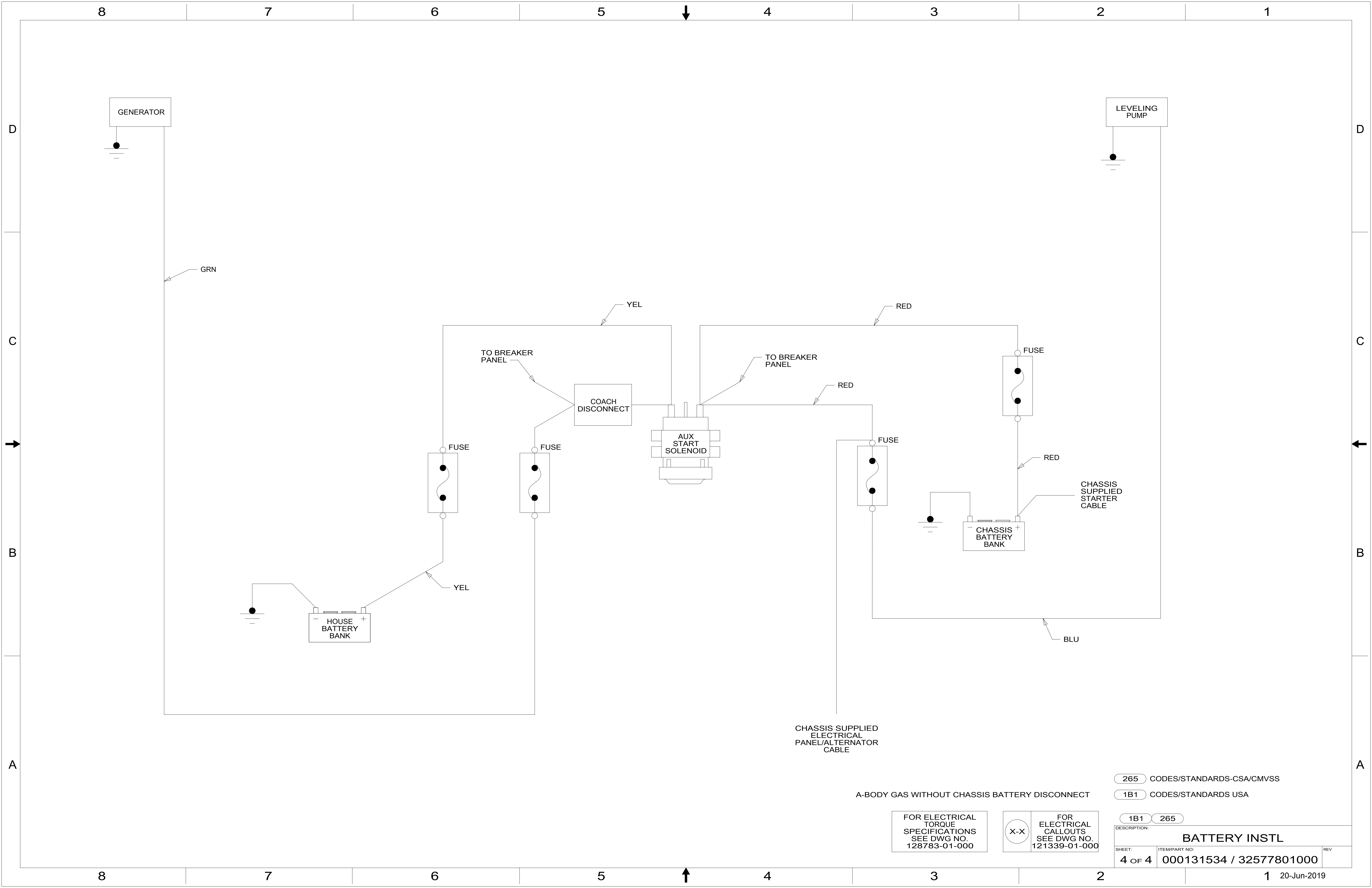
1B1 CODES/STANDARDS USA

1B1 265

FOR ELECTRICAL TORQUE SPECIFICATIONS SEE DWG NO. 128783-01-000

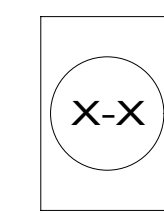
FOR ELECTRICAL CALLOUTS SEE DWG NO. 121339-01-000

DESCRIPTION:		
BATTERY INSTL		
SHEET:	ITEM/PART NO.:	REV
3 OF 4	000131534 / 32577801000	



A-BODY GAS WITHOUT CHASSIS BATTERY DISCONNECT

FOR ELECTRICAL TORQUE SPECIFICATIONS SEE DWG NO. 128783-01-000



FOR ELECTRICAL CALLOUTS SEE DWG NO. 121339-01-000

- 265 CODES/STANDARDS-CSA/CMVSS
- 1B1 CODES/STANDARDS USA

DESCRIPTION:		1B1 265	
BATTERY INSTL			
SHEET:	ITEM/PART NO.:	REV	
4 OF 4	000131534 / 32577801000		