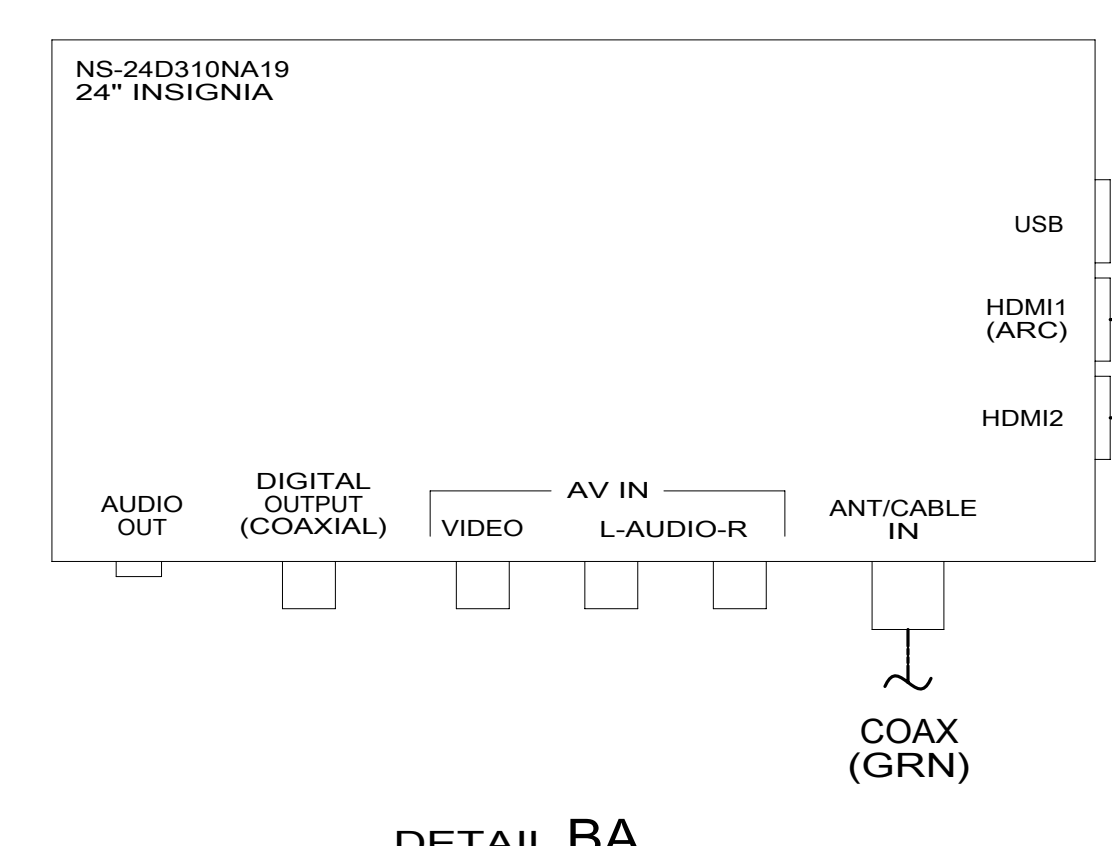
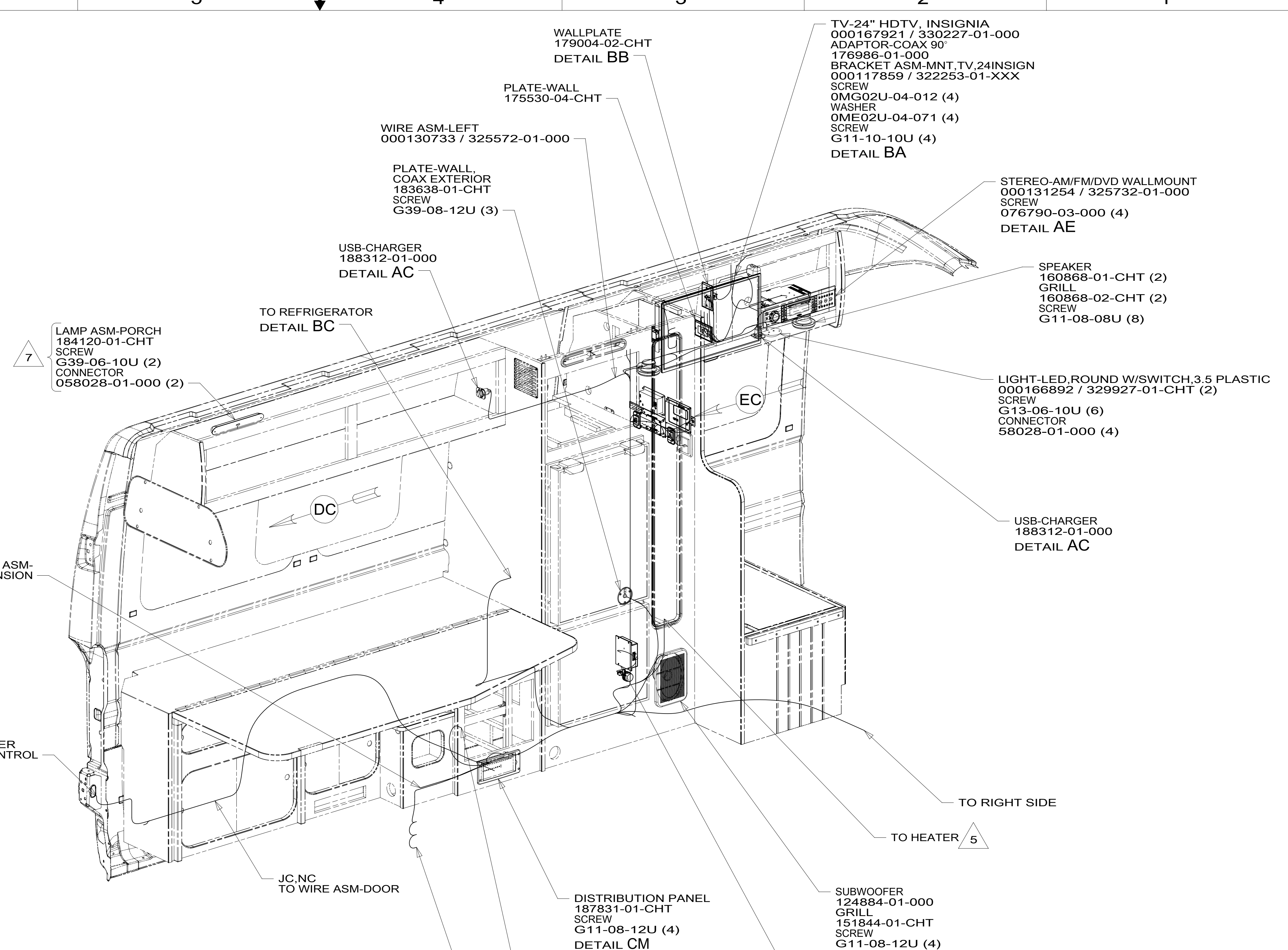


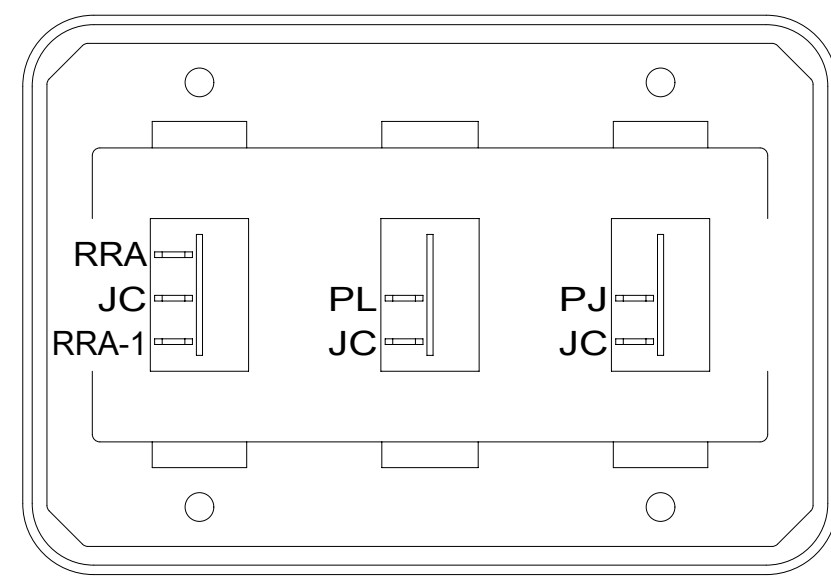
- NOTES:
1. AT MINIMUM ALL WIRES TO BE SUPPORTED AND SECURED PER CODE REQUIREMENTS. USE CLAMP 10495 OR 10497 OR WIRE TIE 8343 OR 108046 AND SCREW G67-XX-XXX OR G56-XX-XXX AS APPROPRIATE FOR INSTALLATION.
 2. COAX IS PART OF WIRE ASM-LEFT.
 3. SEE WIRING INSTL-CHASSIS FOR ADDITIONAL INFORMATION.
 4. PLACE CROSS LOCATOR ON SENSORS OVER DIMPLES ON TANK.
 5. SEE HEATER INSTALLATION INSTRUCTIONS FOR ADDITIONAL INFORMATION.
 6. SEE SHEET 4 FOR ADDITIONAL INFORMATION.
 7. MOUNT ON EXTERIOR SURFACE OF VAN SIDEWALL.



FOR ELECTRICAL TORQUE SPECIFICATIONS SEE DWG NO. 128783-01-000

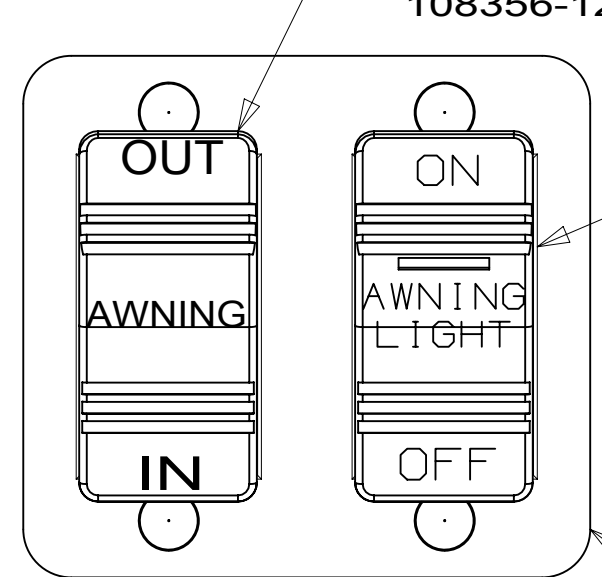
FOR ELECTRICAL CALLOUTS SEE DWG NO. 121339-01-000

265	CODES/STANDARDS-CSA/CMVSS
1B1	CODES/STANDARDS USA
1B1	265
DESCRIPTION: WIRING INSTL-BODY, 12V	
SHEET: 2 OF 5	ITEM/PART NO: 000130719 / 32556701000
REV 03-Jun-2019	



SWITCH-ROCKER
135740-01-CHT (2)
135740-04-CHT
SWITCH-BASE
135741-03-CHT
SWITCH-BEZEL
135742-03-CHT
SCREW
G11-08-08U (4)
WIRE ASM-RESISTOR
140195-01-000

DETAIL CA



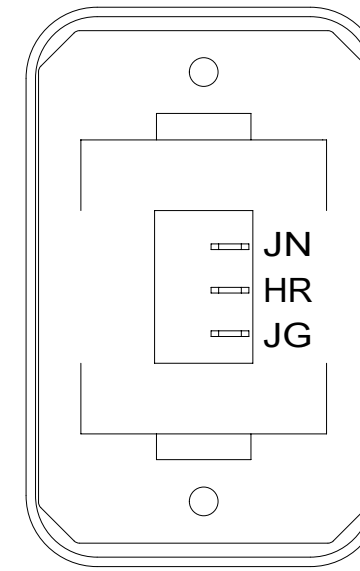
SWITCH-ROCKER
108357-07-000
ACTUATOR-SWITCH
108356-12-CHT

SWITCH-ROCKER
108357-14-000
ACTUATOR-SWITCH
108356-28-CHT

PLATE-SWITCH
158431-19-CHT
SCREW
000G11-08-10U (4)

DETAIL CE

HOLDING TANK HEATER
TURN OFF When Not In Use
SEE OPERATORS MANUAL



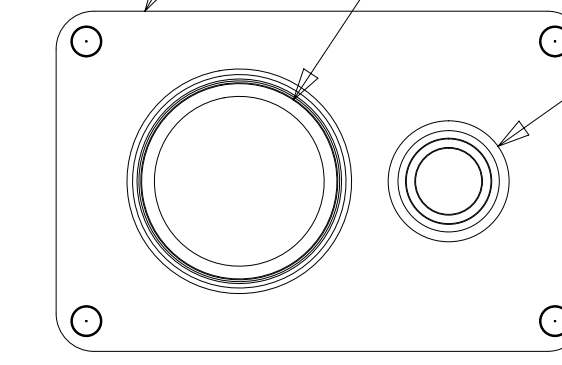
DETAIL CJ

SWITCH-BLANK
138253-01-CHT (1JD)
SWITCH-ROCKER
135740-06-CHT (23T) OR (23R)
SWITCH-BASE
135741-01-CHT
SWITCH-BEZEL
135742-01-CHT
SCREW
G11-08-08U (2)
LABEL-SWITCH
134563-01-CHT (23T) OR (23R)

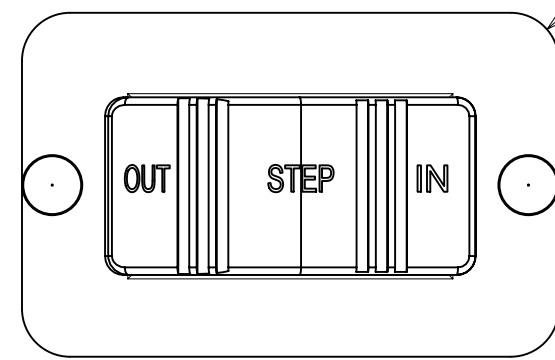
PLATE-SWITCH
000129434 / 325265-01-CHT
SCREW
000G11-08-10U (4)

GAUGE-BATTERY, STATE OF CHARGE
000129126 / 325316-01-000

SWITCH-PUSH BUTTON, LITHIUM BATTERY
000129293 / 325321-01-CHT



DETAIL CF

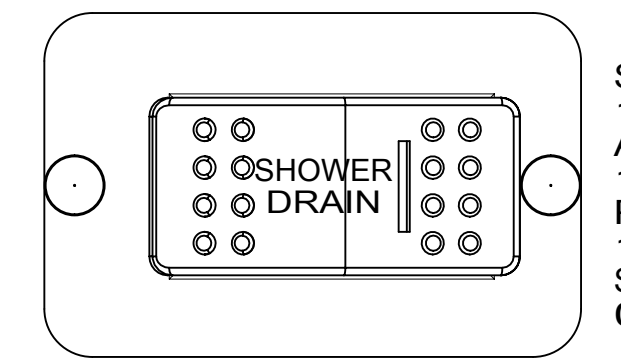


DETAIL CB

SWITCH-ROCKER
108357-07-000
ACTUATOR-SWITCH
108356-29-CHT
PLATE-SWITCH
144363-02-CHT
SCREW
000G11-08-10U (2)
SWITCH-ROCKER
108357-14-000
ACTUATOR-SWITCH
108356-03-CHT
PLATE-SWITCH
144363-02-CHT
SCREW
000G11-08-10U (2)

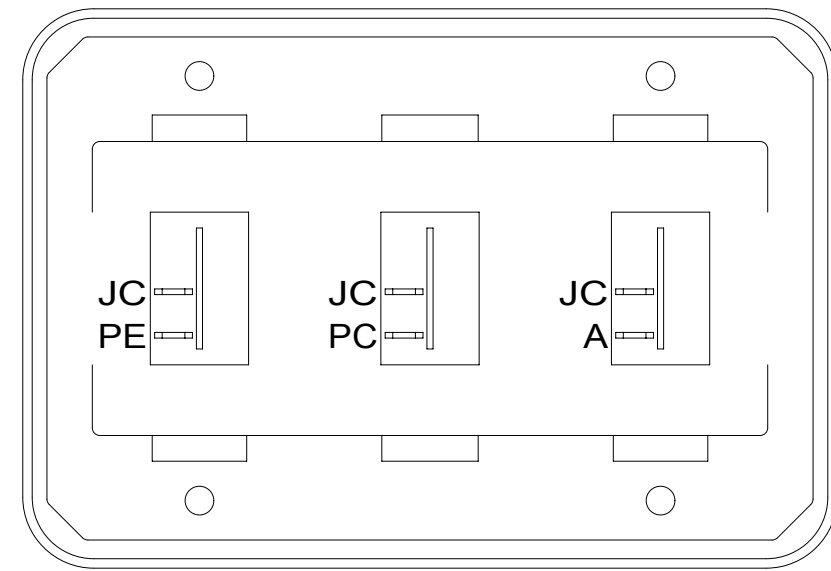
1E2

07B



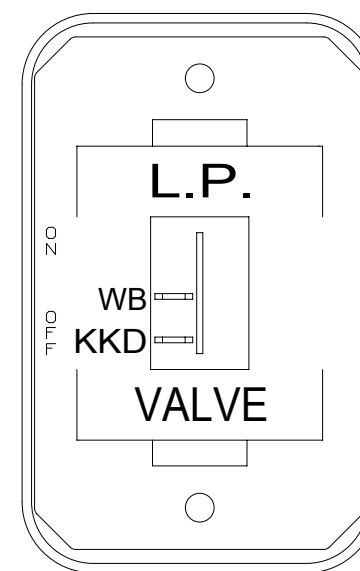
DETAIL CK

SWITCH-ROCKER
108357-14-000
ACTUATOR-SWITCH
108356-10-CHT
PLATE-SWITCH
144363-02-CHT
SCREW
000G11-08-10U (2)



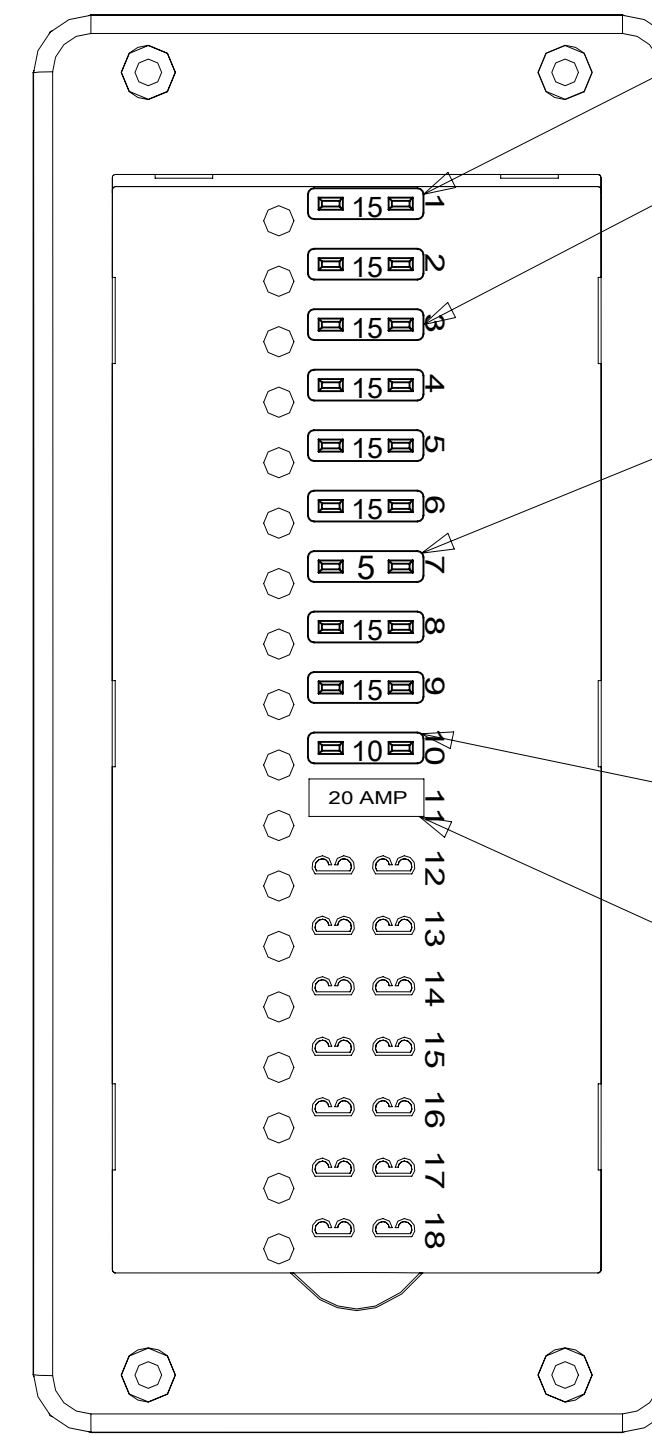
DETAIL CC

SWITCH-ROCKER
135740-01-CHT (3)
SWITCH-BASE
135741-03-CHT
SWITCH-BEZEL
135742-03-CHT
SCREW
G11-08-08U (4)



DETAIL CH

SWITCH-ROCKER
135740-01-CHT
SWITCH-BASE
135741-01-CHT
SWITCH-BEZEL
135742-59-CHT
SCREW
G11-08-08U (2)



DETAIL CM
(COVER REMOVED)

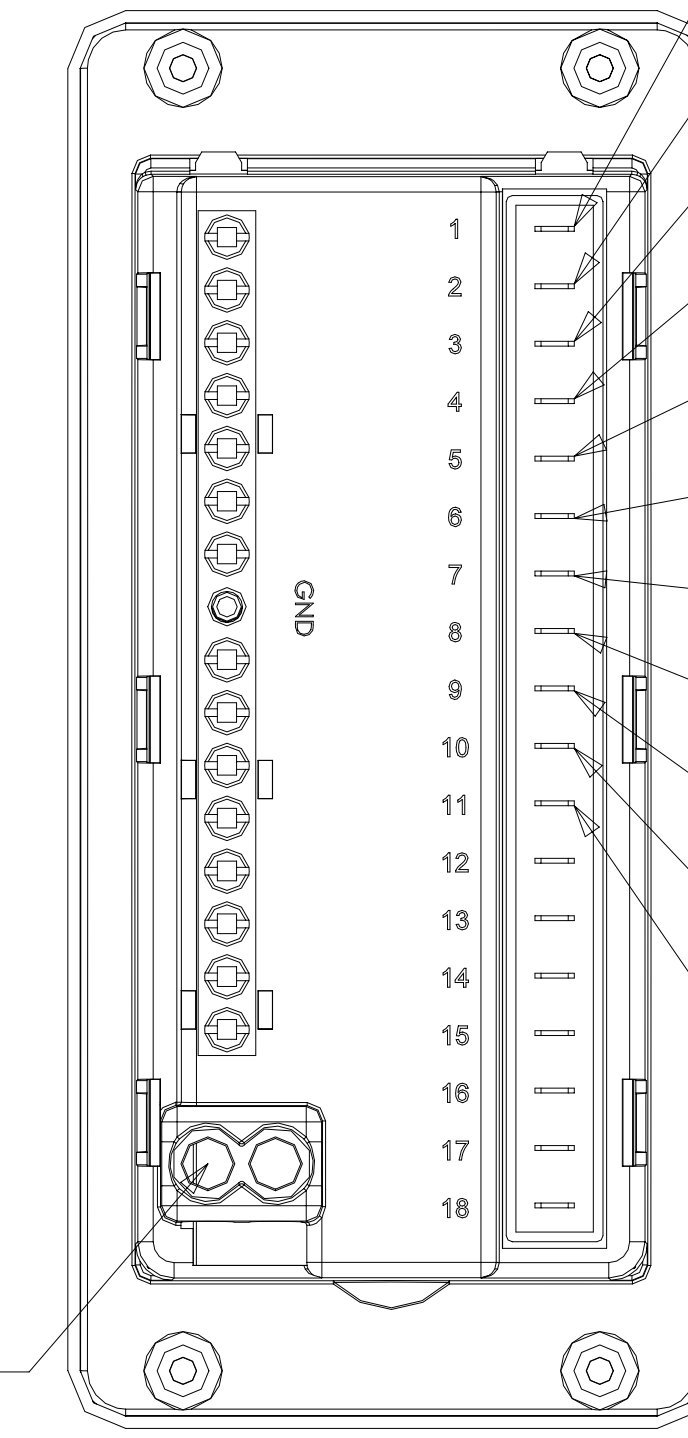
FUSE-15 AMP
062901-05-000 (7)

FUSE-15 AMP
062901-05-000 (23T) (23R)

FUSE-5 AMP
062901-02-000

FUSE-10 AMP
062901-04-000

CIRCUIT BREAKER
184387-01-000



DETAIL CM
(BACK SIDE)

JC
14 Y
(LIGHTS)

JD
14 Y
(12V RCP)

JE
12 Y (23T) (23R)
(TANK HEATERS)

JF
14 Y
(TV/RADIO)

JG
14 Y
(VENT)

NM
12 Y
(AWNING)

WB
16 Y
(LP DETECTOR)

JA
12 Y
(WATER PUMP)

ET
10 Y
(REFRIG)

JB
10 Y
(HEATER)

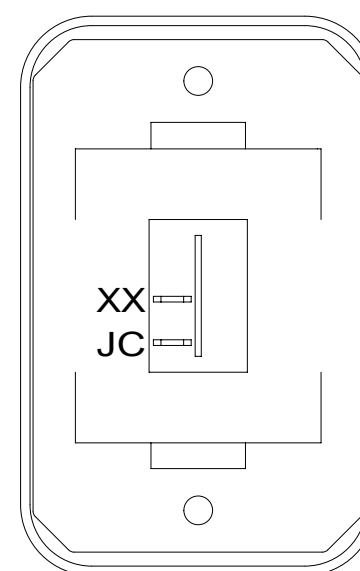
FFZ
10 Y
(MACERATOR)

23T

23R

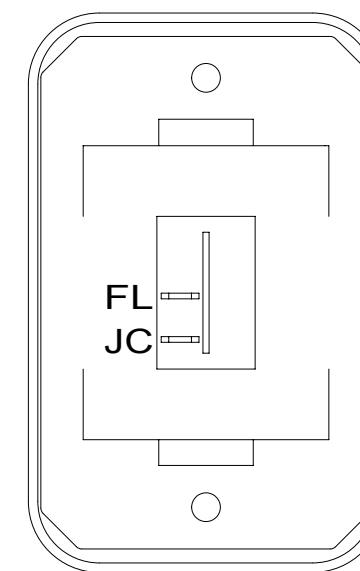
1	LIGHTS	10	HEATER
15	A FUSE MAX	15	A FUSE MAX
2	12V RCP	11	MACERATOR
3	A FUSE MAX	12	A FUSE MAX
4	A FUSE MAX	13	A FUSE MAX
5	VENT	14	A FUSE MAX
6	A FUSE MAX	15	A FUSE MAX
7	LP DETECTOR	16	A FUSE MAX
8	A FUSE MAX	17	A FUSE MAX
9	REFRIG	18	A FUSE MAX
15	A FUSE MAX	15	A FUSE MAX
3	A FUSE MAX	3	A FUSE MAX

DETAIL CM
(BACK SIDE
OF COVER)



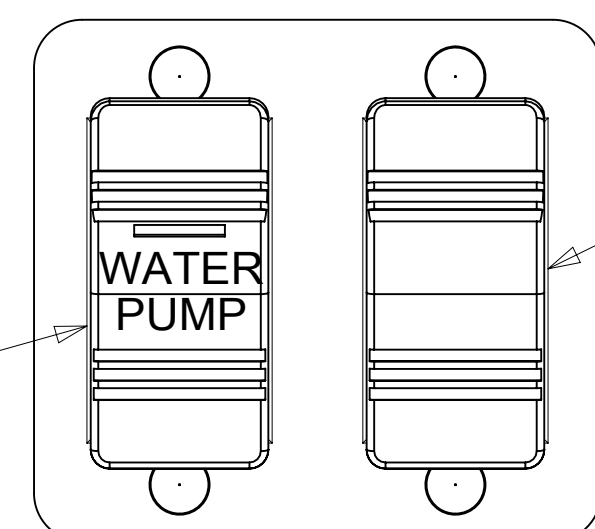
DETAIL CD

SWITCH-ROCKER
135740-01-CHT
SWITCH-BASE
135741-01-CHT
SWITCH-BEZEL
135742-01-CHT
SCREW
G11-08-08U (2)



DETAIL CP

SWITCH-ROCKER
135740-01-CHT
SWITCH-BASE
135741-01-CHT
SWITCH-BEZEL
135742-01-CHT
SCREW
G11-08-08U (2)



DETAIL CN

SWITCH-ROCKER
108357-21-000
ACTUATOR-SWITCH
108356-23-CHT

SWITCH-ROCKER
108357-01-000
ACTUATOR-SWITCH
108356-01-CHT

PLATE-SWITCH
158431-19-CHT
SCREW
000G11-08-10U (4)

FOR ELECTRICAL
TORQUE
SPECIFICATIONS
SEE DWG NO.
128783-01-000

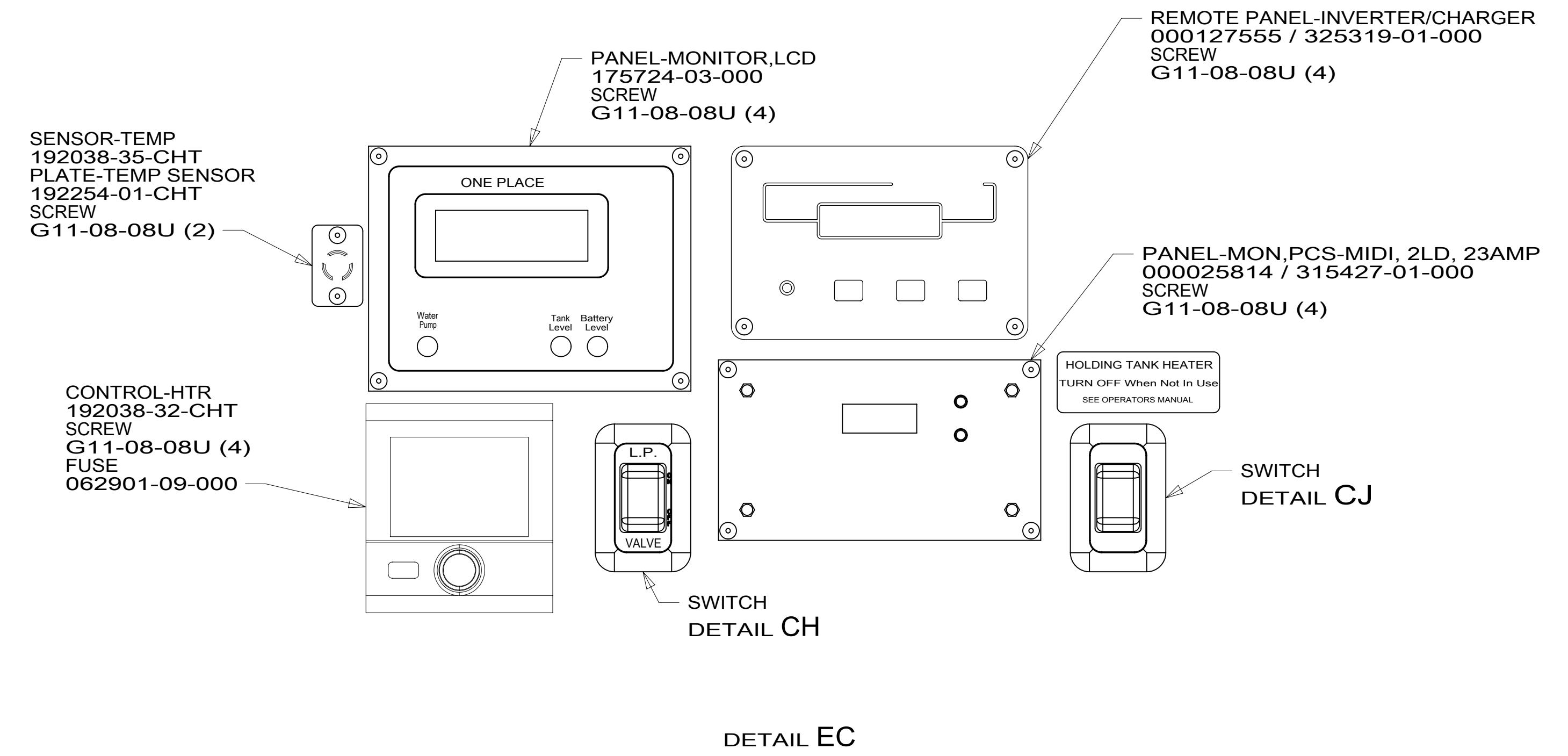
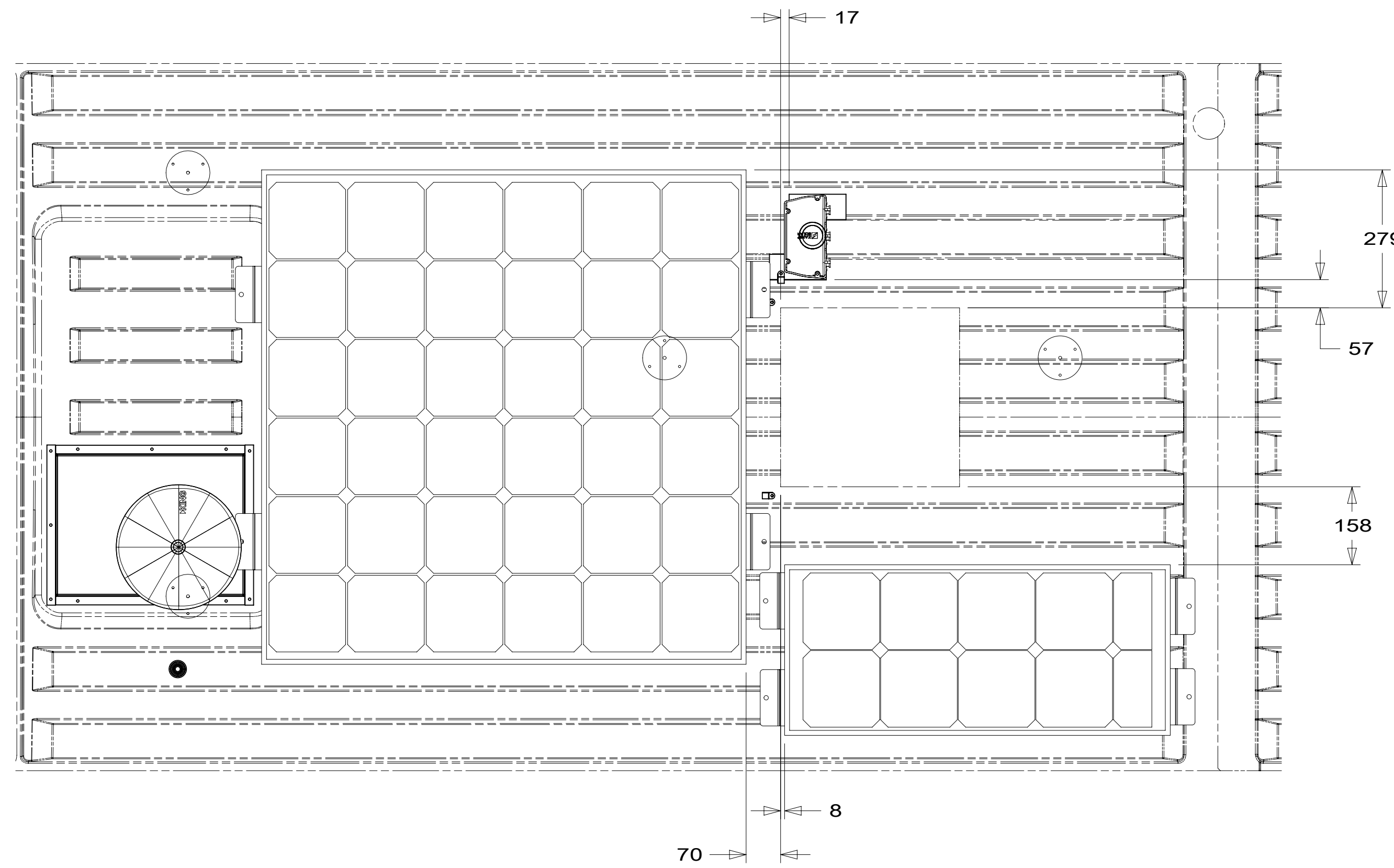
FOR ELECTRICAL
CALLOUTS
SEE DWG NO.
121339-01-000

- 1JD DRAINAGE SYSTEM-HEATED-W/O
- 23R DRAINAGE SYSTEM/HEAT-PREWIRE
- 23T DRAINAGE SYSTEM-HEATED
- 07B RUNNING BOARDS - ALUMINUM
- 1E2 ENTRANCE STEP-ELEC.
- 265 CODES/STANDARDS-CSA/CMVSS
- 1B1 CODES/STANDARDS USA

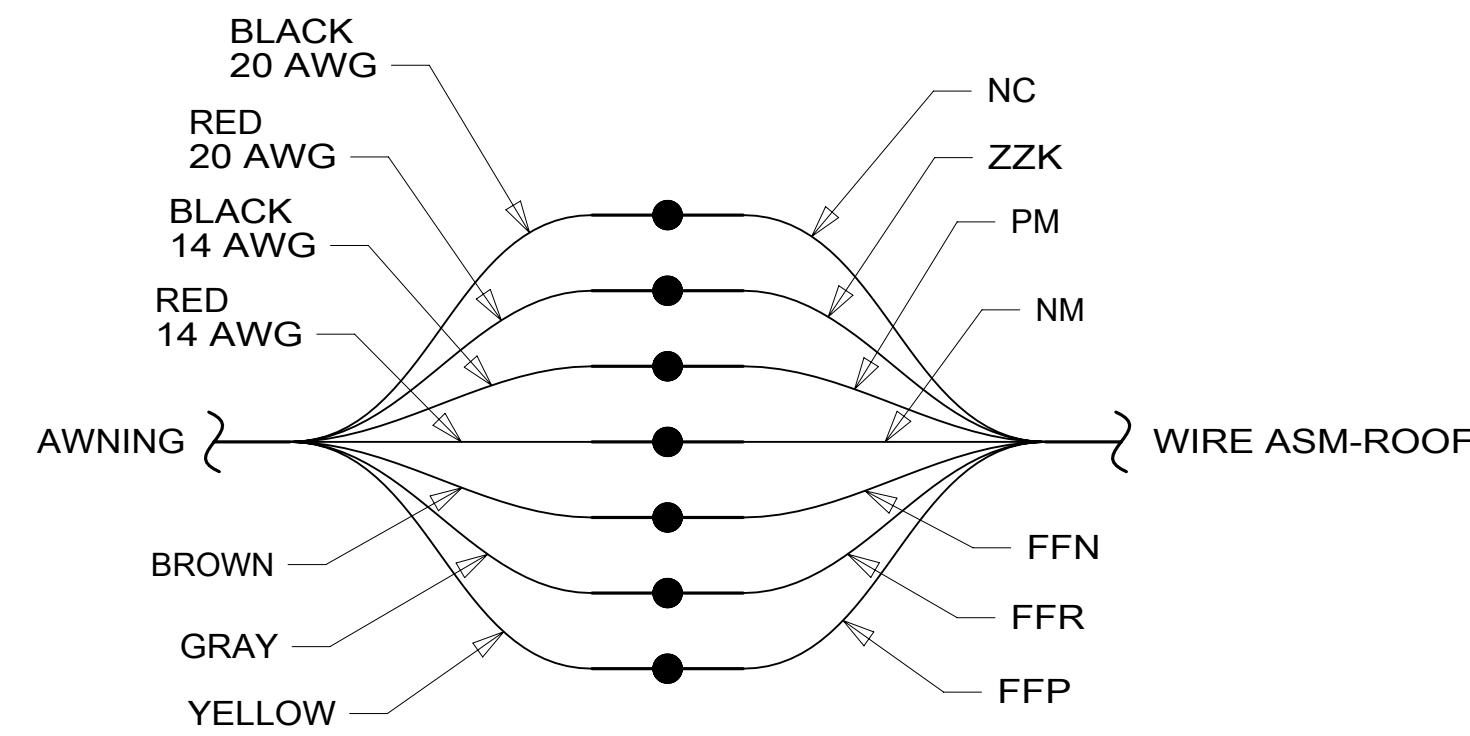
1B1	265
DESCRIPTION: WIRING INSTL-BODY, 12V	
SHEET: 3 OF 5	ITEM/PART NO: 000130719 / 32556701000
REV 03-Jun-2019	

1 SEE BATTERY INSTL FOR MORE INFORMATION.

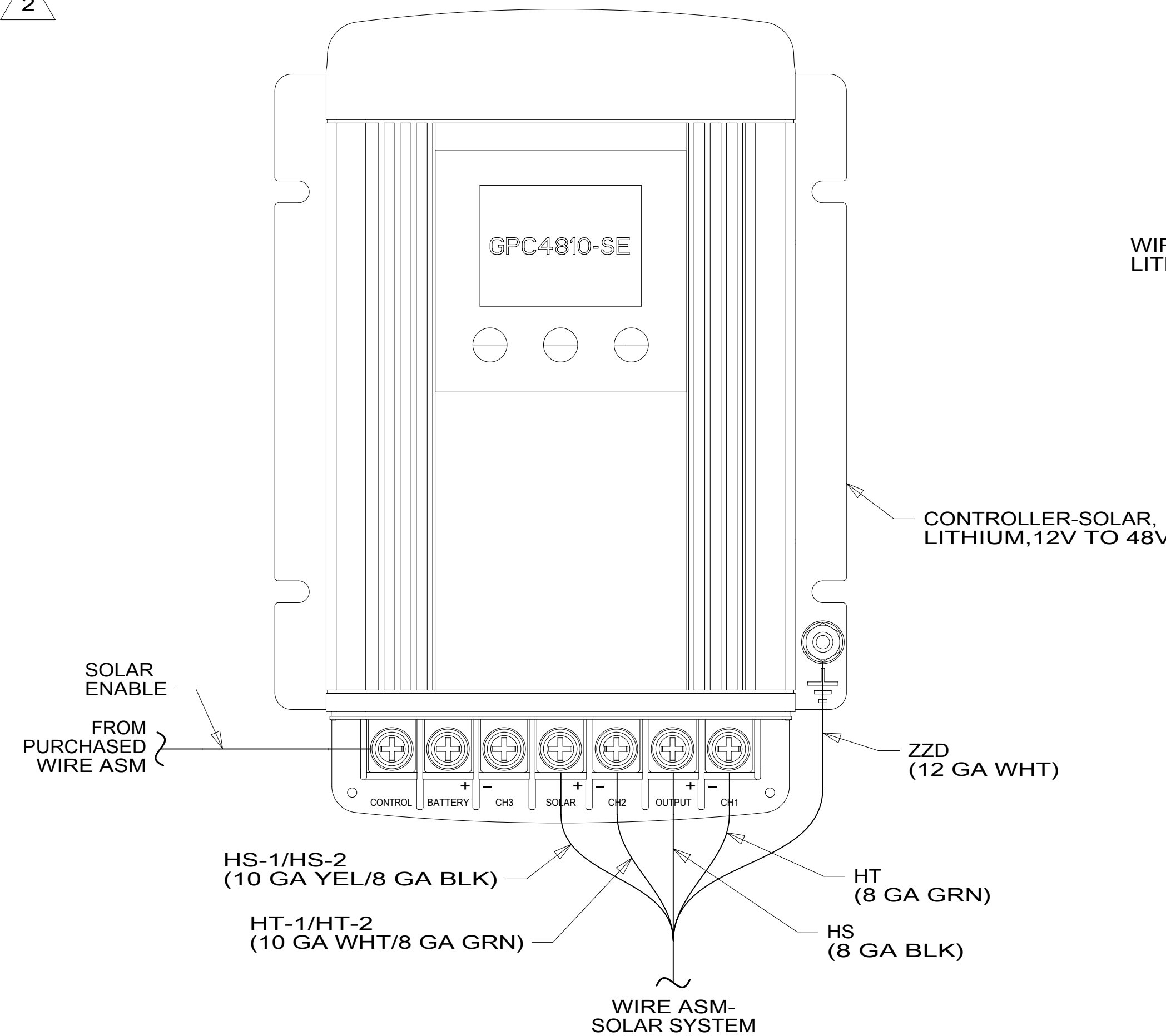
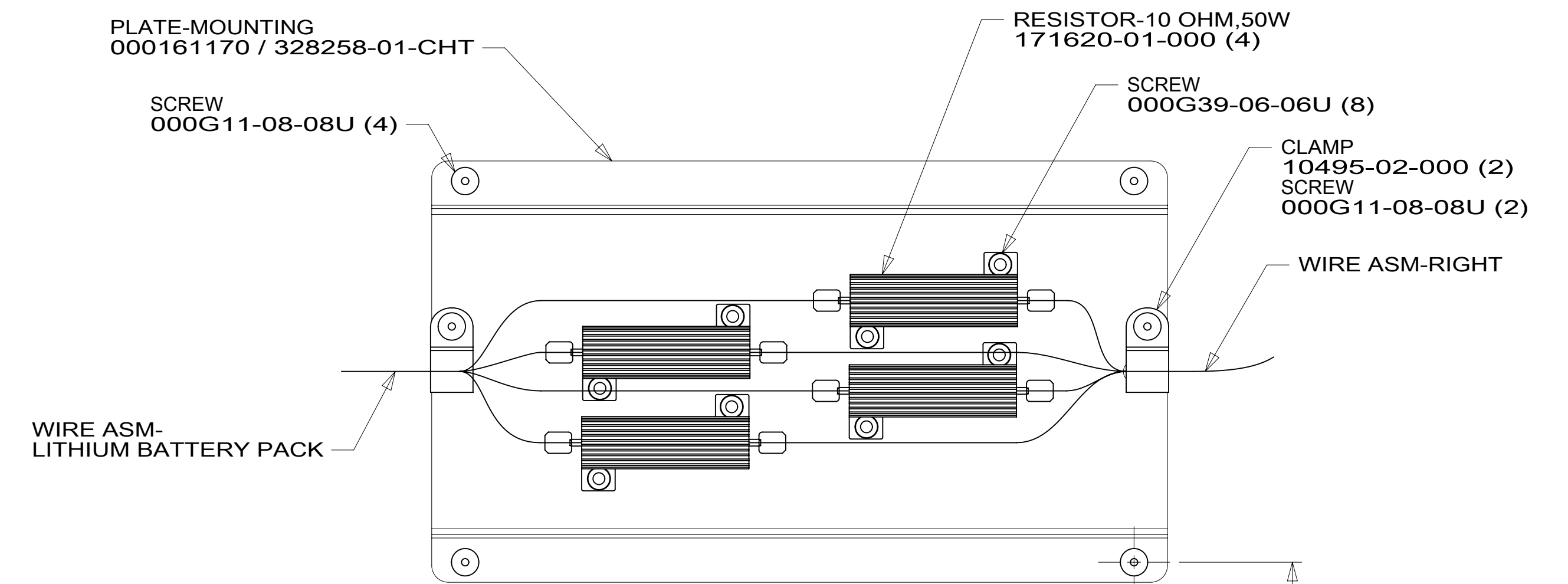
NOTES:



DETAIL EA 2



DETAIL ED



DETAIL EB 2

VIEW EE

2 SEE WIRE ASM-SOLAR SYSTEM AND WIRE INSTL-CHASSIS FOR ADDITIONAL INFORMATION.

1. AT MINIMUM ALL WIRES TO BE SUPPORTED AND SECURED PER CODE REQUIREMENTS. USE CLAMP 10495 OR 10497 OR WIRE TIE 8343 OR 108046 AND SCREW G67-XX-XXX OR G56-XX-XXX AS APPROPRIATE FOR INSTALLATION.

NOTES:

FOR ELECTRICAL TORQUE SPECIFICATIONS SEE DWG NO. 128783-01-000

FOR ELECTRICAL CALLOUTS SEE DWG NO. 121339-01-000

265 CODES/STANDARDS-CSA/CMVSS

1B1 CODES/STANDARDS USA

1B1 265

DESCRIPTION: WIRING INSTL-BODY, 12V

SHEET: 5 OF 5 ITEM/PART NO: 000130719 / 32556701000 REV