

- 6 DO NOT HI-POT INLET. LED MAY FAIL.
- 5 LOAD CENTER GROUND WIRES MUST BE ATTACHED DIRECTLY TO CHASSIS GROUND.
- 4 GROUND WIRES (8 GA WIRE) FROM LOAD CENTER ROUTE THROUGH FLOOR TO GROUND BOLT.
- 3 SEE SHEET 3 FOR ADDITIONAL INFORMATION.

- 2. ALL 110V WIRES TO BE CLAMPED WITH CLAMP 10497-05-000 WITHIN 200MM OF OUTLET BOXES, USE SCREW G67-10-12B.
- 1. AT MINIMUM ALL WIRES TO BE SUPPORTED AND SECURED PER CODE REQUIREMENTS. USE CLAMP 10495 OR 10497 OR WIRE TIE 8343 OR 108046 AND SCREW G67-XX-XXX OR G56-XX-XXX AS APPROPRIATE FOR INSTALLATION.

NOTES:

RECEPTACLE ASM-GFI,US-20A
000120177 / 322738-01-XXX (1B1)
RECEPTACLE ASM-GFI,CAN-20A
000120178 / 322739-01-XXX (265)
(WHT) (HEATER)
PANEL-RECEPTACLE
188004-03-CHT
SCREW
G67-10-10U (2)

INLET-30A,125V,EXTERIOR
000037518 / 318581-01-CHT (6)
SCREW
000G11-07-12U (4)
BRACKET-PLUG
168924-01-CHT

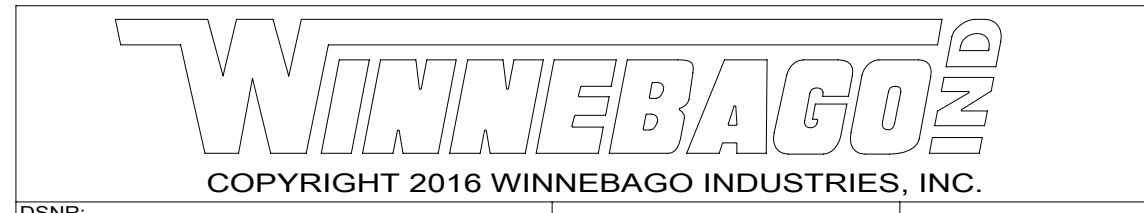
TO GROUND BOLT (5)

LOAD CENTER ASM
000126989 / 324580-01-000 (3, 4, 5)

GROMMET
23942-01-000

265 CODES/STANDARDS-CSA/CMVSS
1B1 CODES/STANDARDS USA

1B1 265



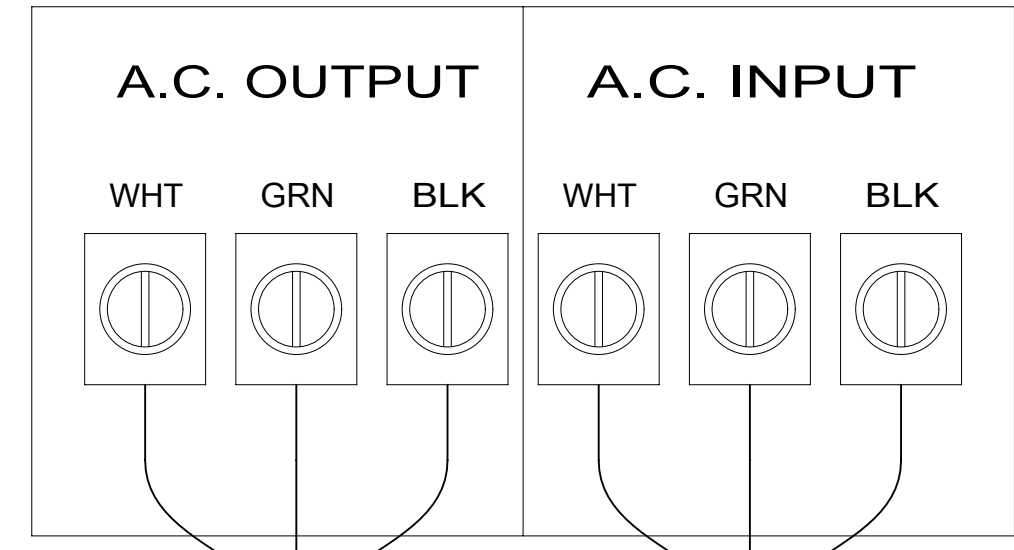
DSNR:	ALL DIMENSIONS ARE IN MILLIMETERS	
DFFR:		
UNSPECIFIED TOLERANCES:	MATERIAL:	
WHOLE DIM (X) : 3		
ONE-PLACE (X.X) : 1.5		
TWO-PLACE (X.XX) : 0.50		
ANGLE : 1°		
REFER TO ES0018 FOR FASTENER TIGHTENING GUIDELINES	WEIGHT: (LBS)	FIRST USED:
		19 259GL

FOR ELECTRICAL TORQUE SPECIFICATIONS SEE DWG NO. 128783-01-000

FOR ELECTRICAL CALLOUTS SEE DWG NO. 121339-01-000

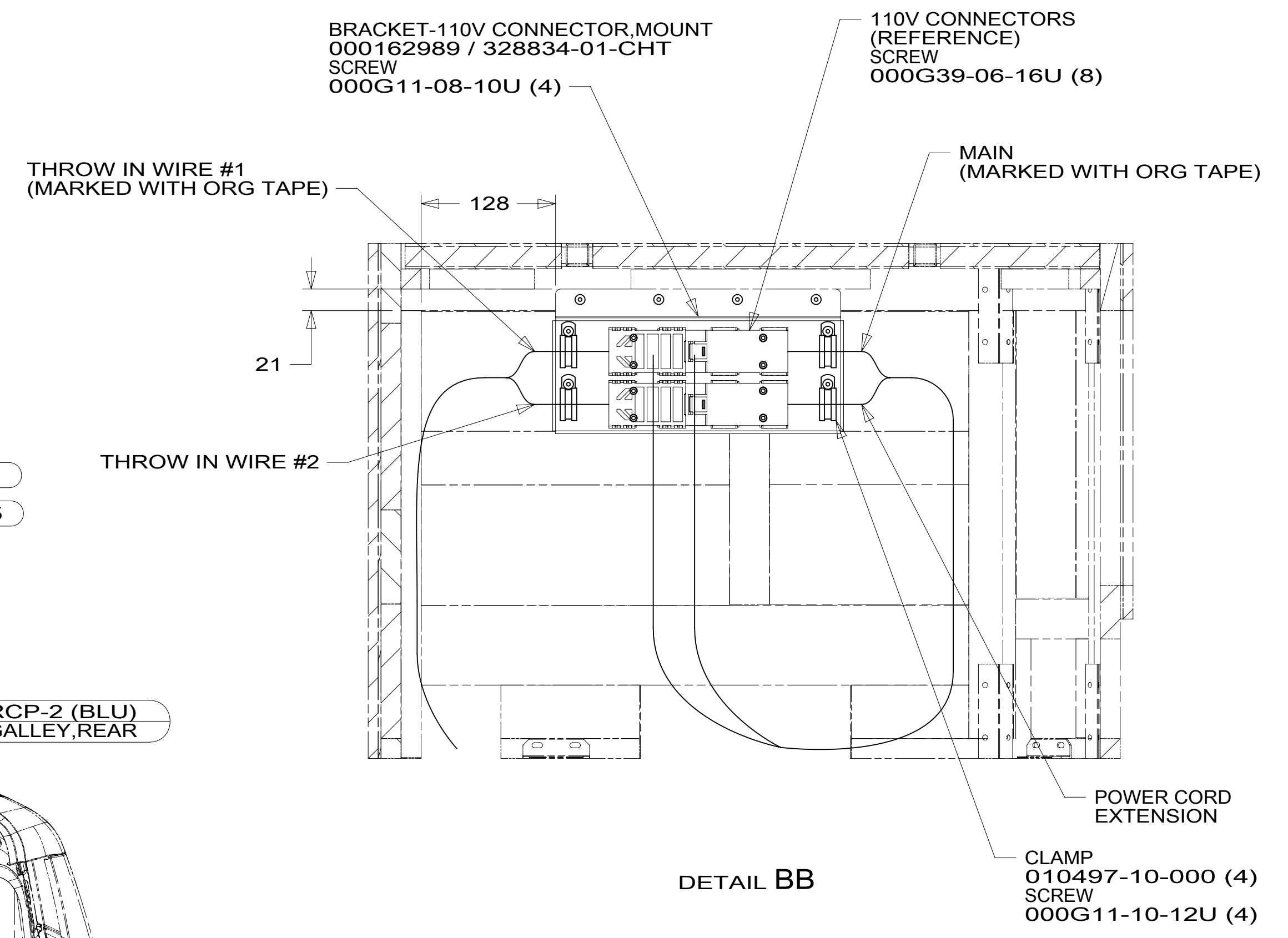
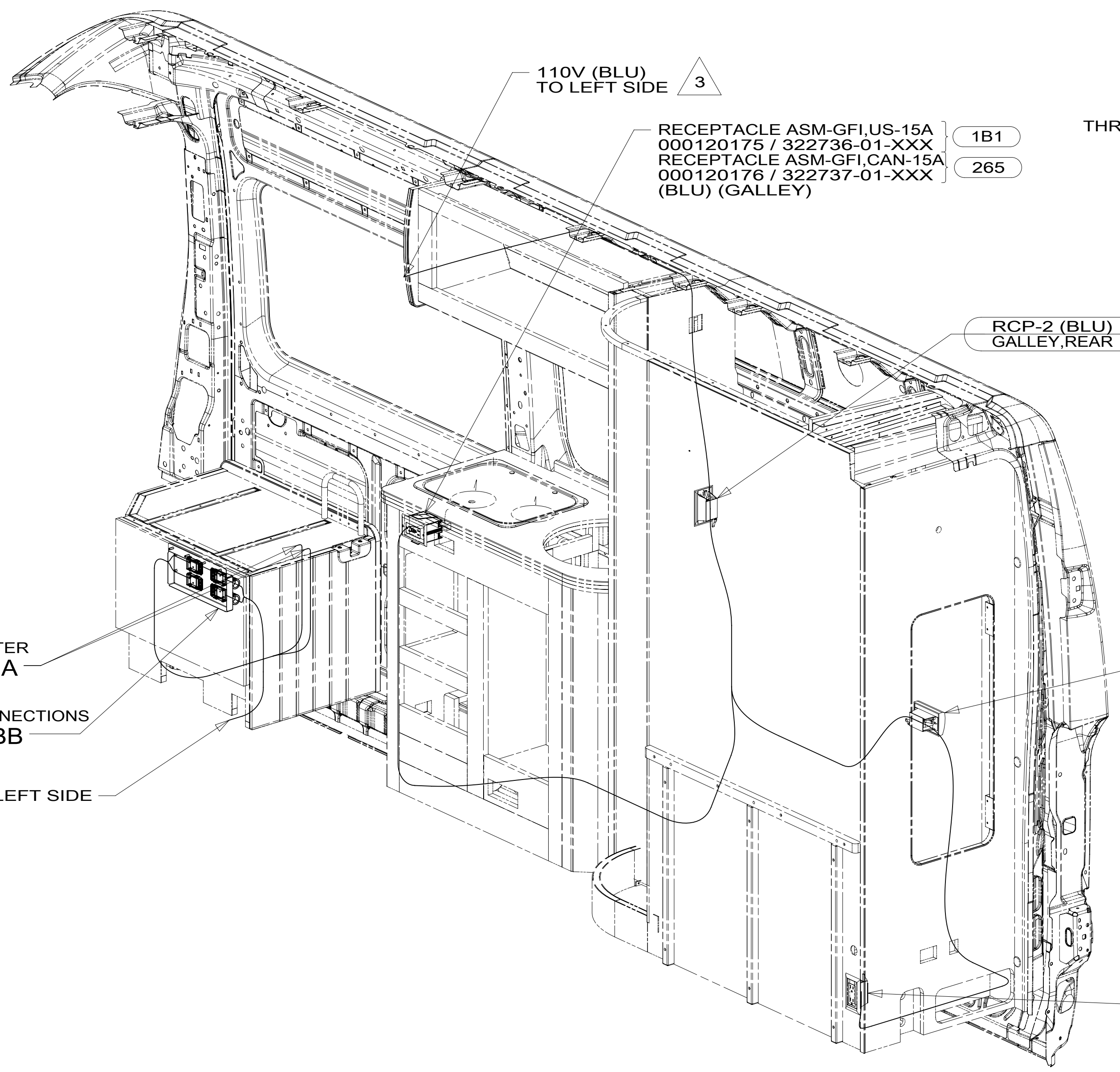
WIRING INSTL-BODY, 110V

SHEET: 1 OF 4 ITEM/PART NO.: 000130718 / 32556601000 REF: 1 08-Aug-2018



THROW IN WIRE #1
 THROW IN WIRE #2
 AND
 WIRES FROM
 LITHIUM SYSTEM
 WIRING

DETAIL BA
 (SHOWN WITH
 COVER REMOVED) 4



- 4 CONNECT WHT TO WHT, BLK TO BLK, AND BARE TO GRN.
- 3 SEE SHEET 3 FOR ADDITIONAL INFORMATION.

2. ALL 110V WIRES TO BE CLAMPED WITH CLAMP 10497-05-000 WITHIN 200MM OF OUTLET BOXES, USE SCREW G67-10-12B.
1. AT MINIMUM ALL WIRES TO BE SUPPORTED AND SECURED PER CODE REQUIREMENTS. USE CLAMP 10495 OR 10497 OR WIRE TIE 8343 OR 108046 AND SCREW G67-XX-XXX OR G56-XX-XXX AS APPROPRIATE FOR INSTALLATION.

NOTES:

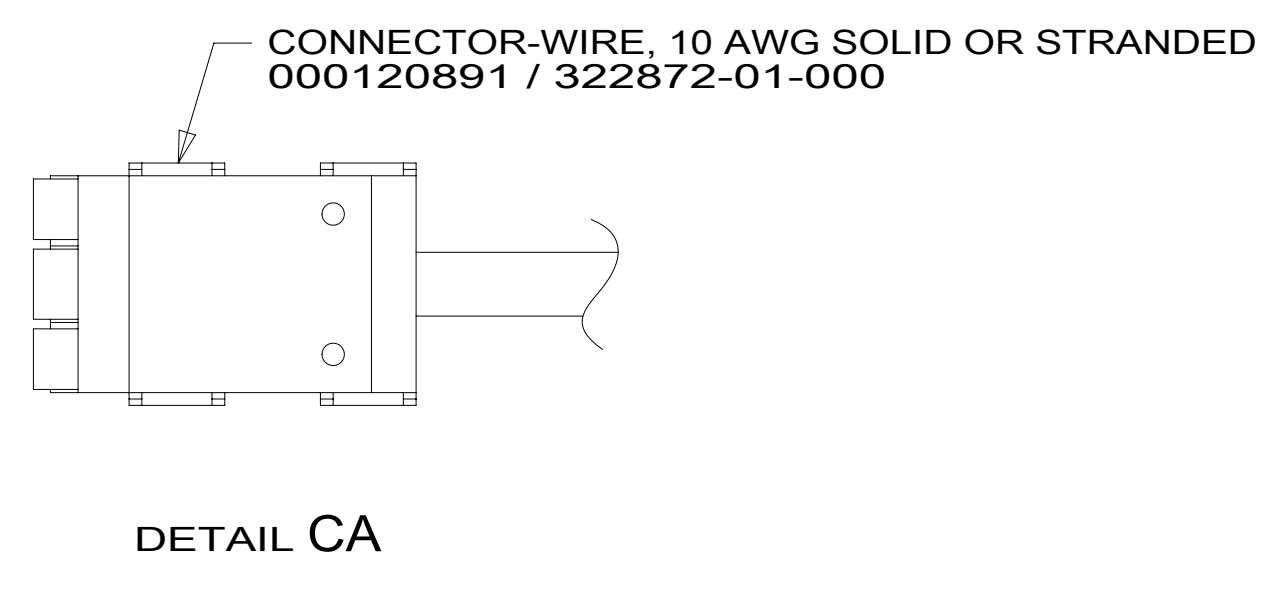
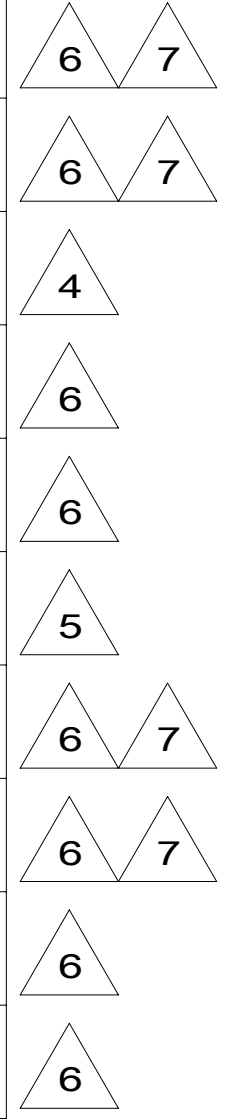
- 265 CODES/STANDARDS-CSA/CMVSS
- 1B1 CODES/STANDARDS USA

FOR ELECTRICAL
 TORQUE
 SPECIFICATIONS
 SEE DWG NO.
 128783-01-000

FOR
 ELECTRICAL
 CALLOUTS
 SEE DWG NO.
 121339-01-000

DESCRIPTION:	
WIRING INSTL-BODY, 110V	
SHEET:	ITEM/PART NO. REV
2 OF 4	000130718 / 32556601000

RED	1B1	136135-07-061
	265	136136-07-061
YEL	1B1	136131-05-075
	265	136134-05-075
BLK	1B1	136131-06-042
	265	136134-06-042
BLU	1B1	136131-02-170
	265	136134-02-170
WHT	1B1	136135-09-024
	265	136136-09-024
MAIN	1B1	136137-01-048
	265	136138-01-048
GROUND MAIN		136145-06-010
POWER CORD EXTENSION	1B1	136137-01-028
	265	136138-01-028
CORD-POWER ASM		183140-01-000
THROW IN WIRE #1	1B1	136137-01-011
	265	136138-01-011
THROW IN WIRE #2	1B1	136137-01-011
	265	136138-01-011



- NOTES:
- 1. ALL GROUNDS WIRES TO BE COVERED WITH TUBING 8041-02-000.
 - 2. SECURE WIRES TO BACKSIDE OF LOAD CENTER WITH WIRE TIE 116673-01-000.
 - 3. SEE WIRING INSTL-BODY, 12V FOR ADDITIONAL INFORMATION.

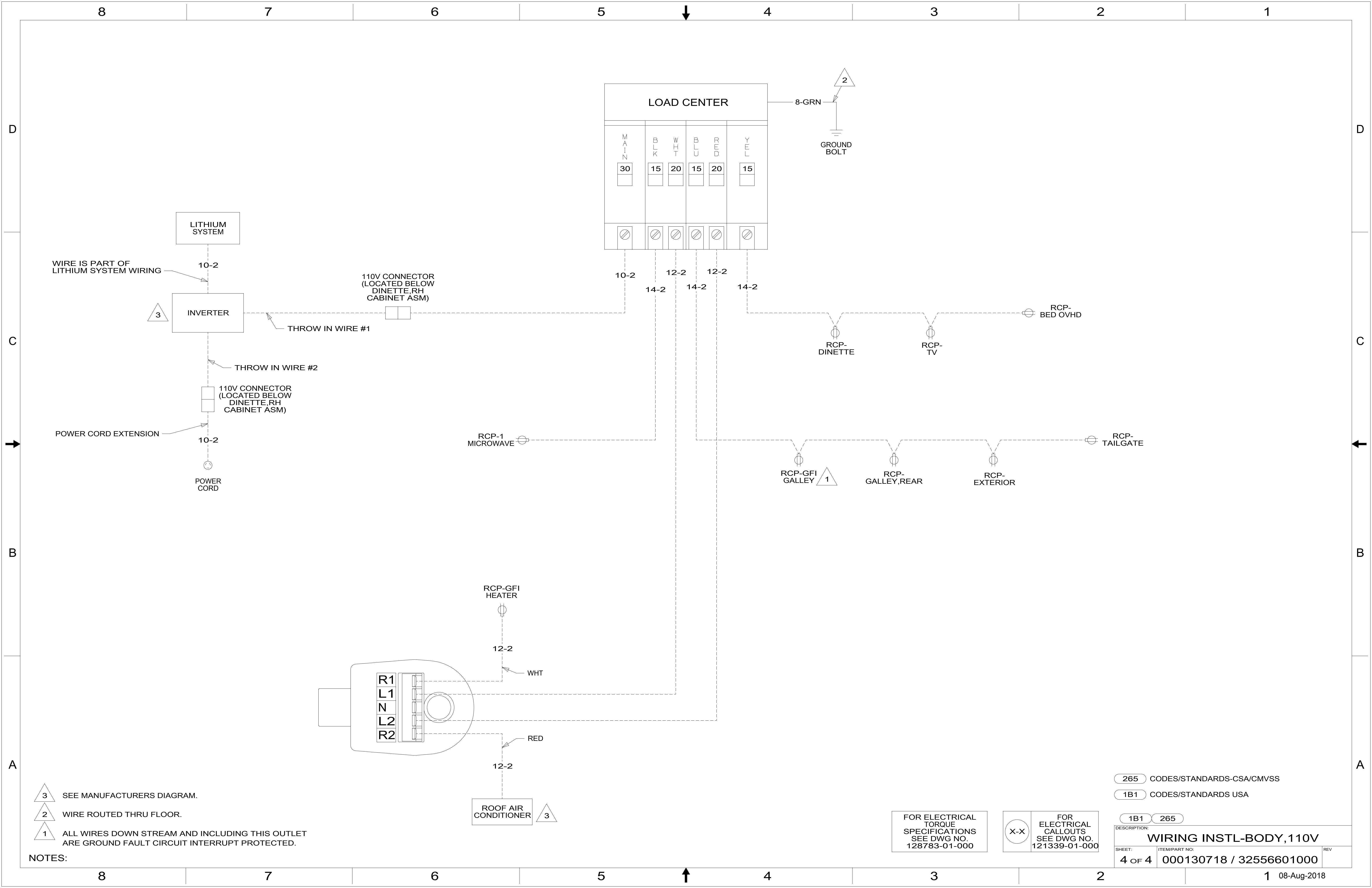
- 7 ORG TAPE TO BE APPLIED TO BOTH ENDS.
- 6 FOR CONNECTOR INSTALLATION SEE DETAIL CA.
- 5 DO NOT HI-POT POWER CORD, LED INDICATOR LIGHT MAY FAIL.
- 4 GROUND WIRES TO BE INSTALLED ON MFG LINE. SHIP GROUND WIRES LOOSE WITH LOAD CENTER.

265 CODES/STANDARDS-CSA/CMVSS
 1B1 CODES/STANDARDS USA

FOR ELECTRICAL TORQUE SPECIFICATIONS SEE DWG NO. 128783-01-000

FOR ELECTRICAL CALLOUTS SEE DWG NO. 121339-01-000

DESCRIPTION: 1B1 265
WIRING INSTL-BODY, 110V
 SHEET: 3 OF 4 ITEM/PART NO: 000130718 / 32556601000 REV



- NOTES:
- 3 SEE MANUFACTURERS DIAGRAM.
 - 2 WIRE ROUTED THRU FLOOR.
 - 1 ALL WIRES DOWN STREAM AND INCLUDING THIS OUTLET ARE GROUND FAULT CIRCUIT INTERRUPT PROTECTED.

FOR ELECTRICAL TORQUE SPECIFICATIONS SEE DWG NO. 128783-01-000

FOR ELECTRICAL CALLOUTS SEE DWG NO. 121339-01-000

- 265 CODES/STANDARDS-CSA/CMVSS
- 1B1 CODES/STANDARDS USA

DESCRIPTION: WIRING INSTL-BODY, 110V		
SHEET: 4 OF 4	ITEM/PART NO: 000130718 / 32556601000	REV