

ALTERNATOR-120 AMP, 58V
000129757 / 325336-01-000

KIT-INSTL ALTERNATOR, PROMASTER 3.6L
000129755 / 325335-01-000

CABLE ASM-ALTERNATOR (RED)

265 CODES/STANDARDS-CSA/CMVSS

1B1 CODES/STANDARDS USA

1B1 265



DSNR:		ALL DIMENSIONS ARE IN MILLIMETERS	
DFFR:		MATERIAL:	
UNSPECIFIED TOLERANCES:			
WHOLE DIM (X)	: 3		
ONE-PLACE (X.X)	: 1.5		
TWO-PLACE (X.XX)	: 0.50		
ANGLE	: 1°		

REFER TO ES0018 FOR FASTENER TIGHTENING GUIDELINES

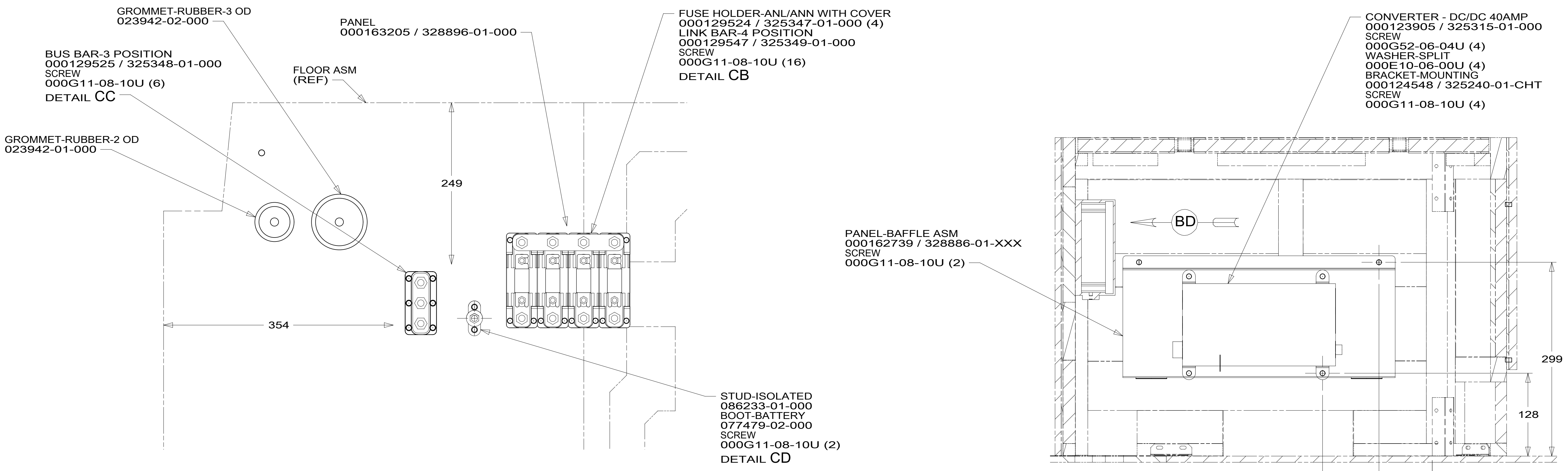
WEIGHT: (LBS) FIRST USED: **19 259GL**

FOR ELECTRICAL TORQUE SPECIFICATIONS SEE DWG NO. 128783-01-000

FOR ELECTRICAL CALLOUTS SEE DWG NO. 121339-01-000

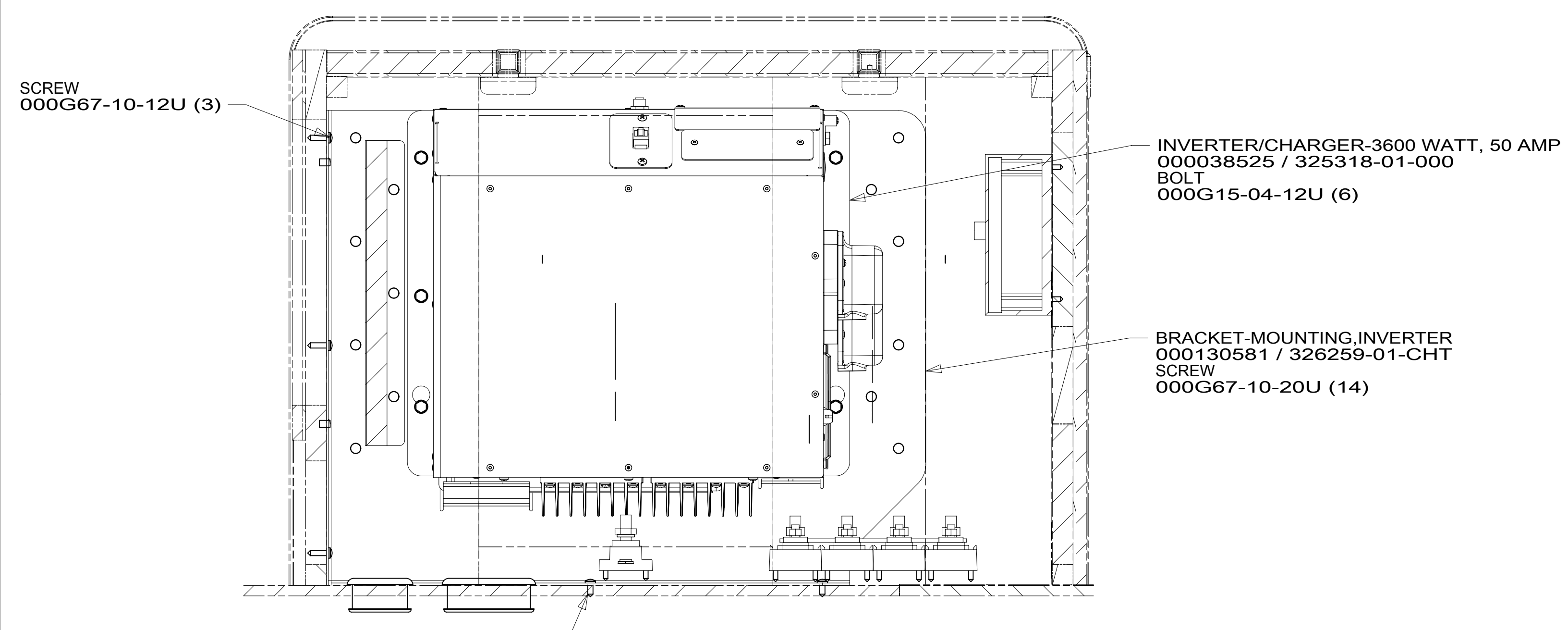
DESCRIPTION: BATTERY INSTL		
SHEET: 1 OF 9	ITEM/PART NO.: 000130665 / 32556901000	REV:
REF:		1 10-Oct-2018

8 7 6 5 4 3 2 1

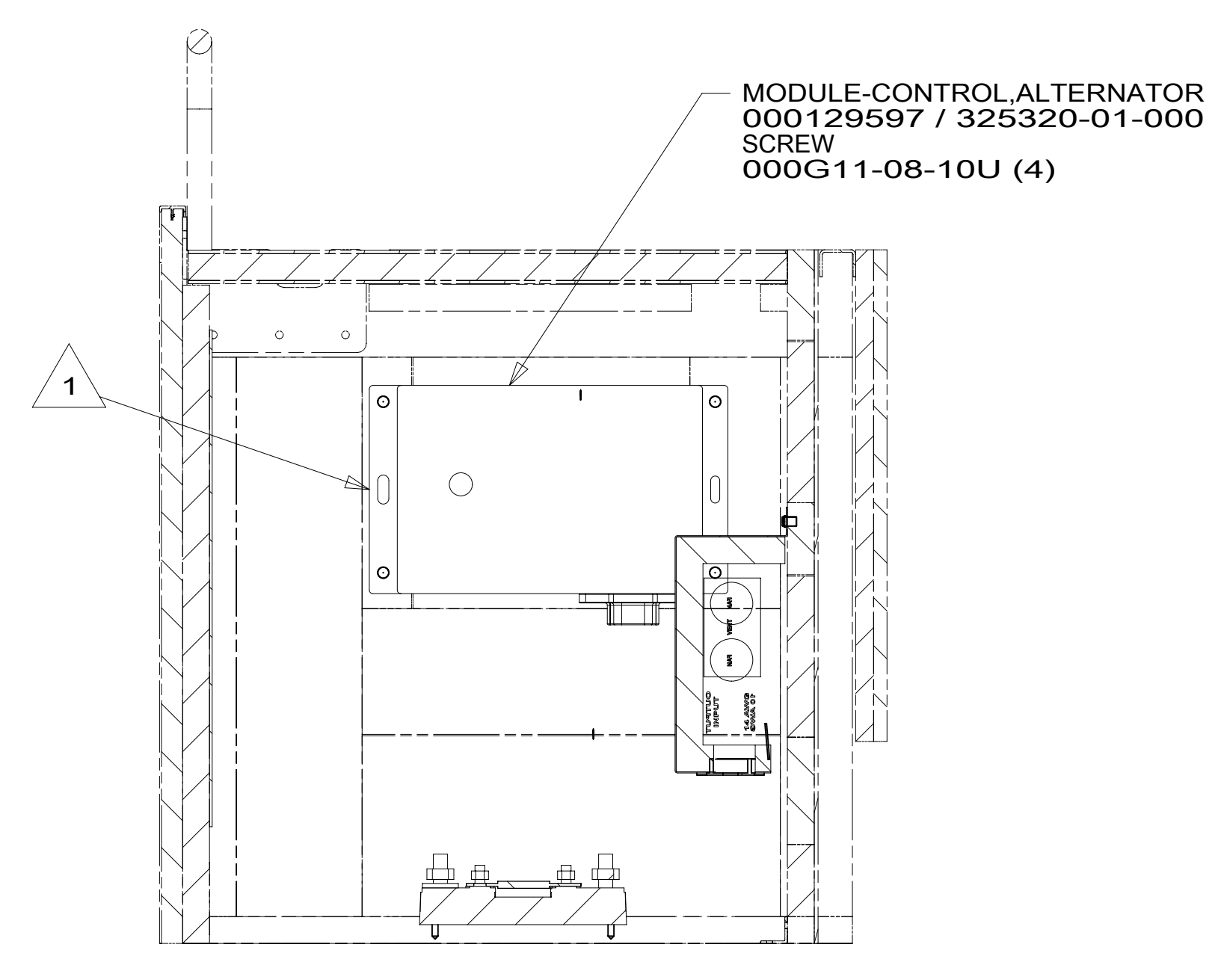


VIEW BA

VIEW BB



VIEW BC



VIEW BD

NOTES:
 1 MOUNT FLUSH TO STICK.

FOR ELECTRICAL TORQUE SPECIFICATIONS SEE DWG NO. 128783-01-000

FOR ELECTRICAL CALLOUTS SEE DWG NO. 121339-01-000

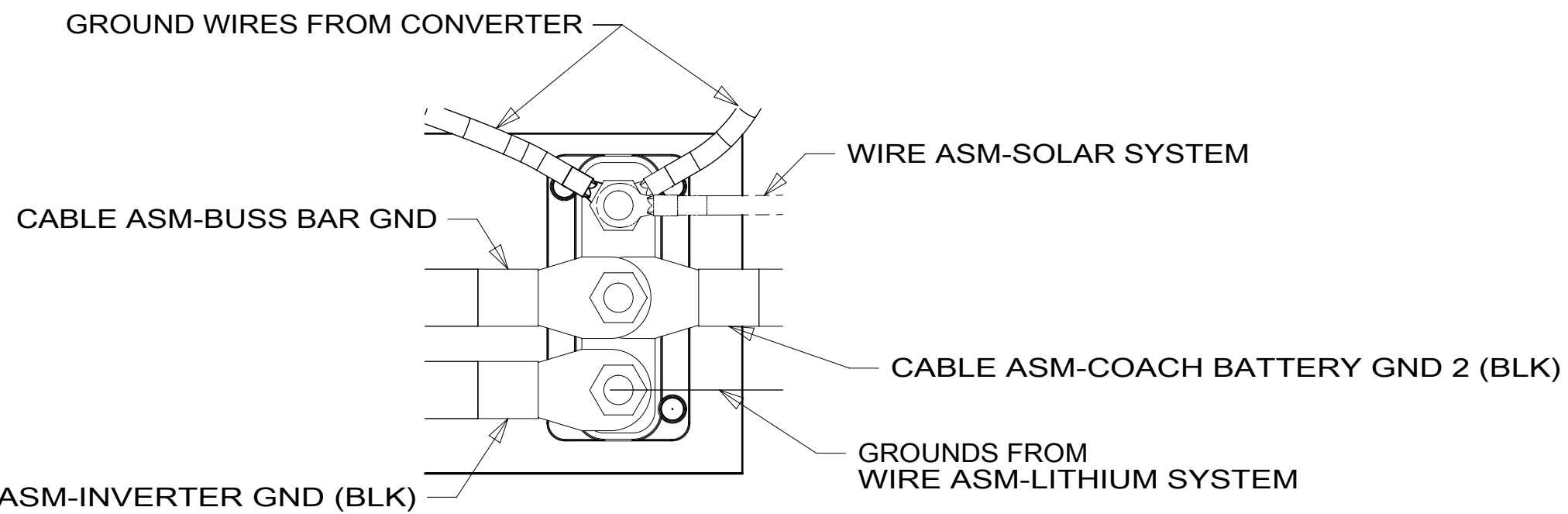
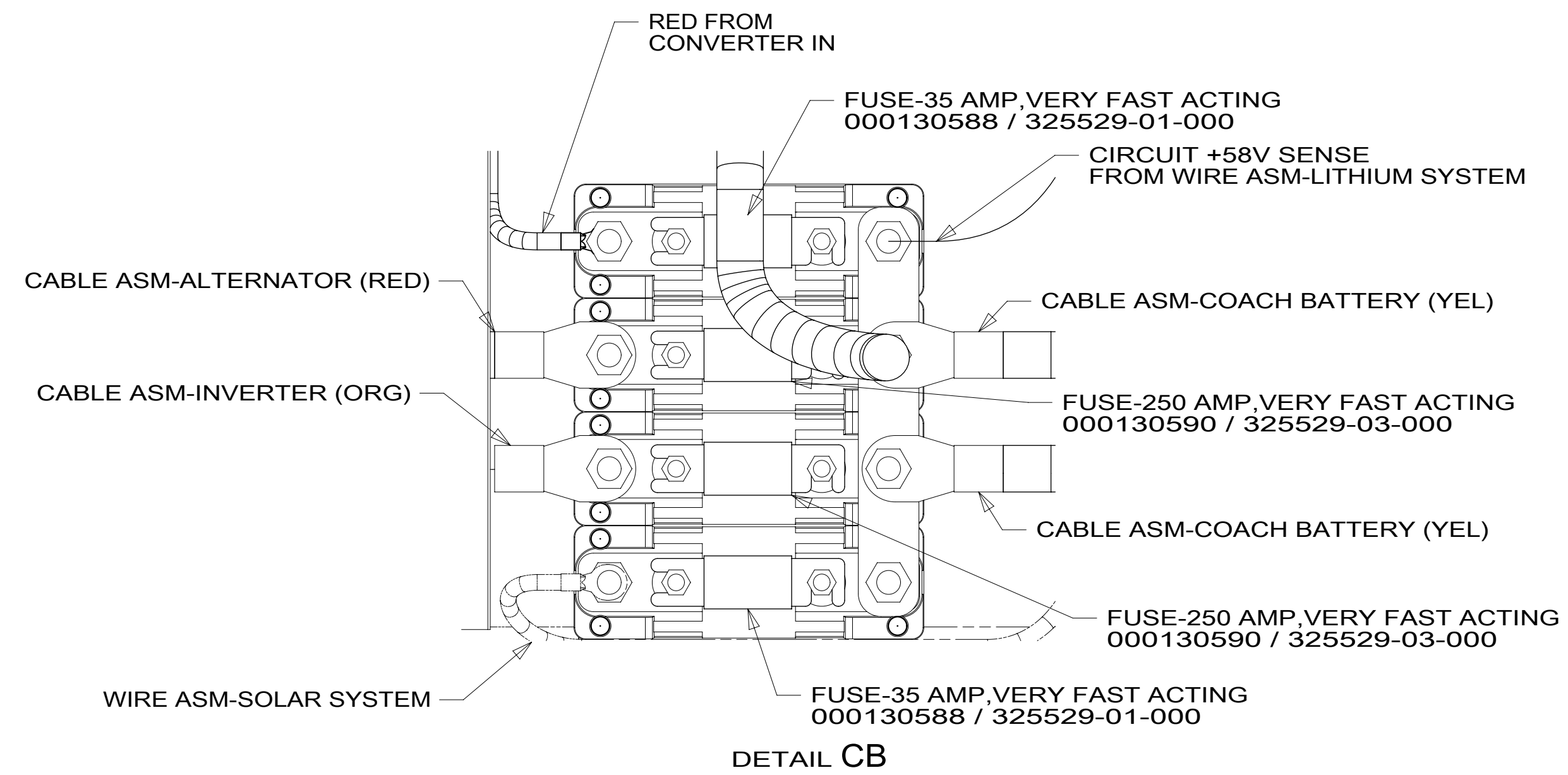
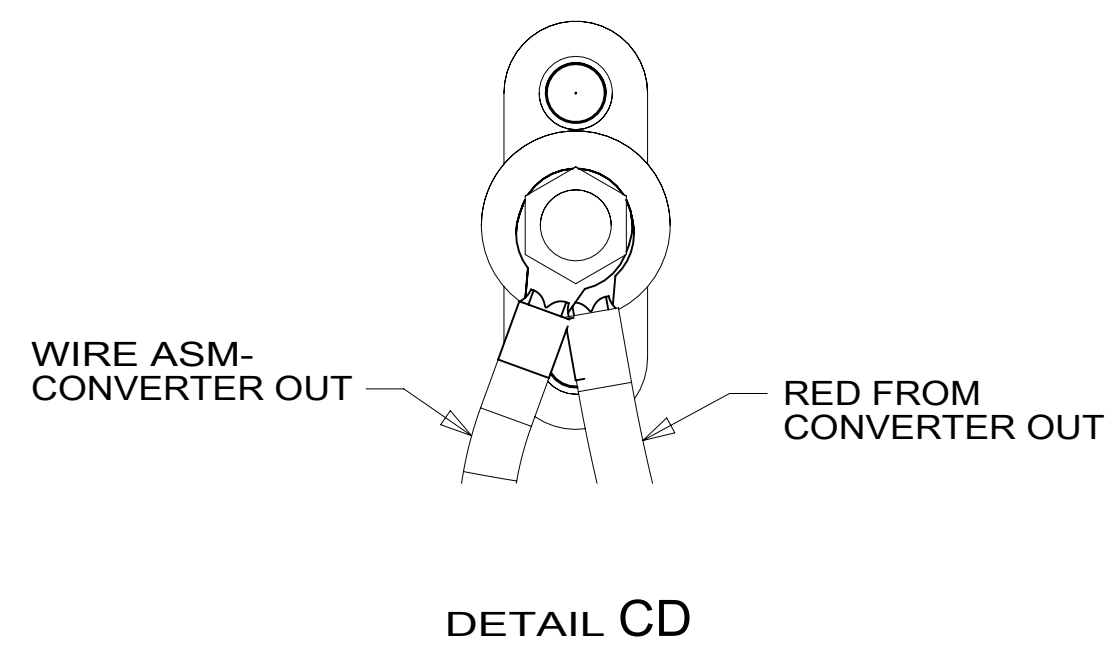
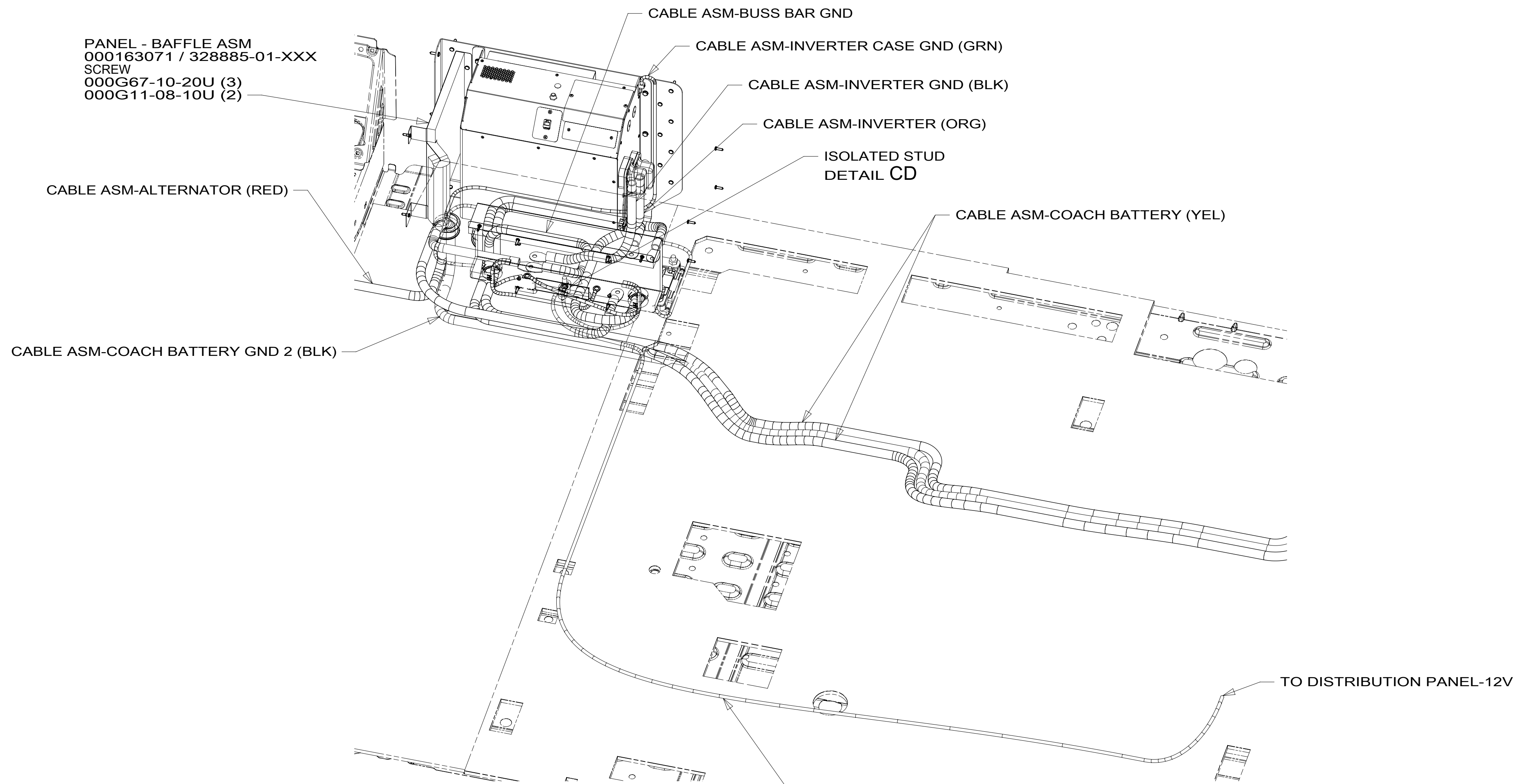
265 CODES/STANDARDS-CSA/CMVSS
 1B1 CODES/STANDARDS USA

DESCRIPTION:		1B1 265	
BATTERY INSTL			
SHEET:	ITEM/PART NO.:	REV	
2 OF 9	000130665 / 32556901000		

8 7 6 5 4 3 2 1 10-Oct-2018

CABLE ASM-ALTERNATOR (RED)	175207-36-034
CABLE ASM-COACH BATTERY (YEL)	175207-52-039 (2)
CABLE ASM-COACH BATTERY GND 1 (BLK)	175211-02-014
CABLE ASM-COACH BATTERY GND 2 (BLK)	175211-02-039
CABLE ASM-BUSS BAR GND	133566-12-008
CABLE ASM-INVERTER (ORG)	175207-62-006
CABLE ASM-INVERTER GND (BLK)	175211-02-004
CABLE ASM-INVERTER CASE GND (GRN)	136145-05-016

PANEL - BAFFLE ASM
000163071 / 328885-01-XXX
SCREW
000G67-10-20U (3)
000G11-08-10U (2)



¹ CONNECT RING TERMINAL TO ISOLATED STUD WITH RED OUT FROM CONVERTER AND CONNECT SOLDERED END TO DISTRIBUTION PANEL-12V

FOR ELECTRICAL TORQUE SPECIFICATIONS SEE DWG NO. 128783-01-000

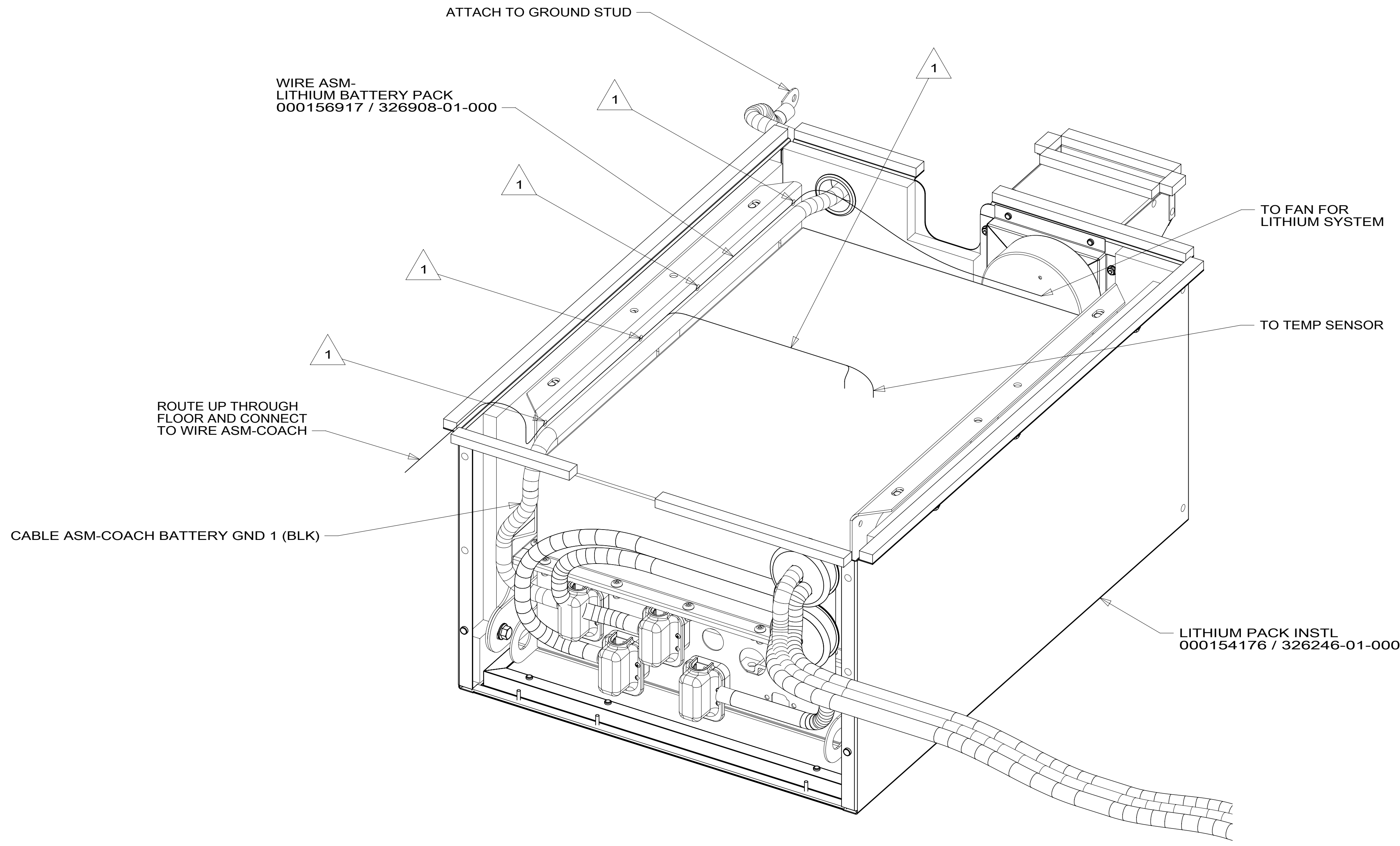
FOR ELECTRICAL CALLOUTS SEE DWG NO. 121339-01-000

265 CODES/STANDARDS-CSA/CMVSS
1B1 CODES/STANDARDS USA

DESCRIPTION:	1B1 265	
BATTERY INSTL		
SHEET:	ITEM/PART NO:	REV
3 OF 9	000130665 / 32556901000	

8 7 6 5 4 3 2 1

D
C
B
A



VIEW DA

NOTES:

1 SECURE CABLE HERE WITH WIRE-TIE 008343-04-000.

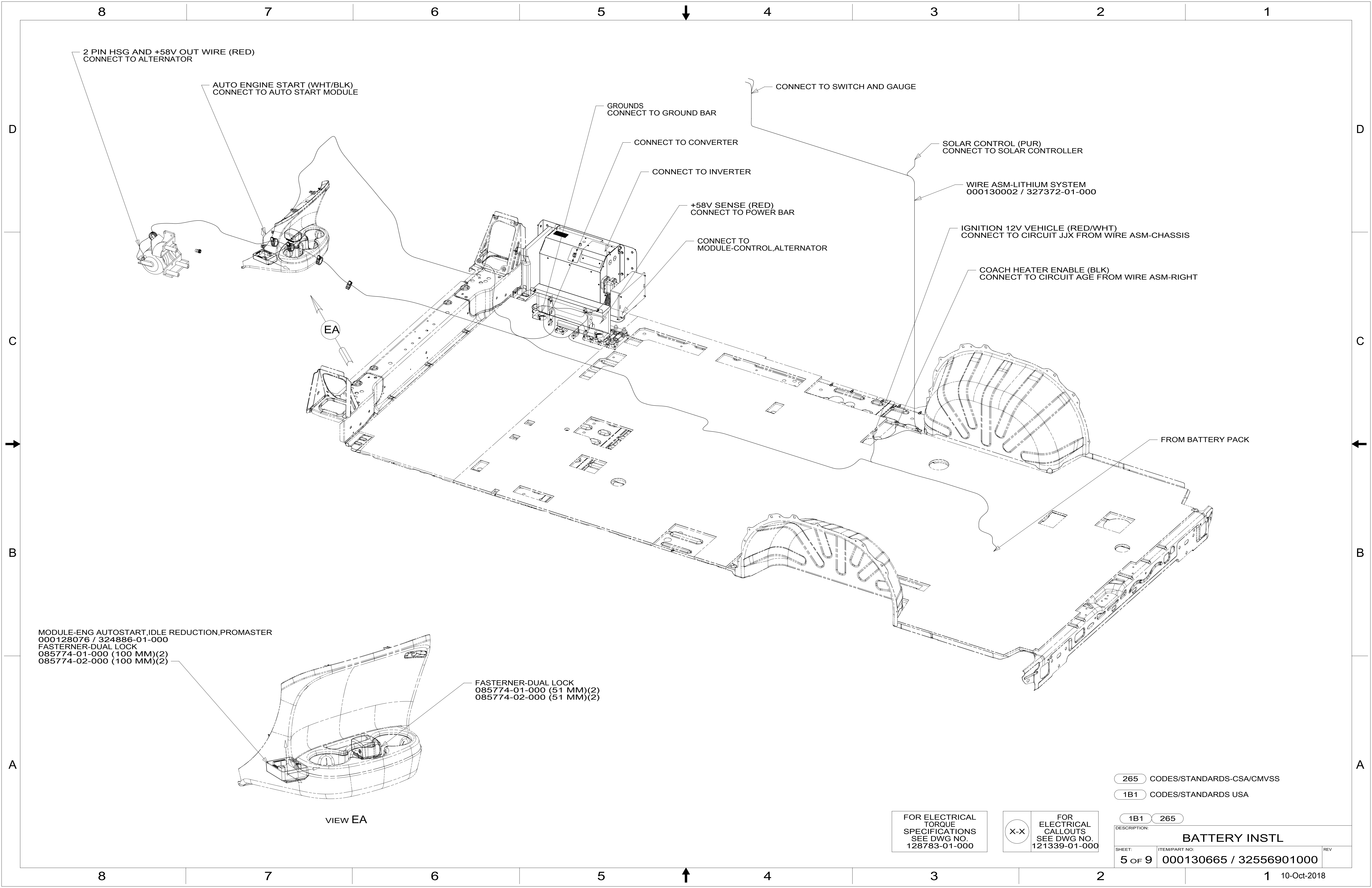
FOR ELECTRICAL TORQUE SPECIFICATIONS SEE DWG NO. 128783-01-000

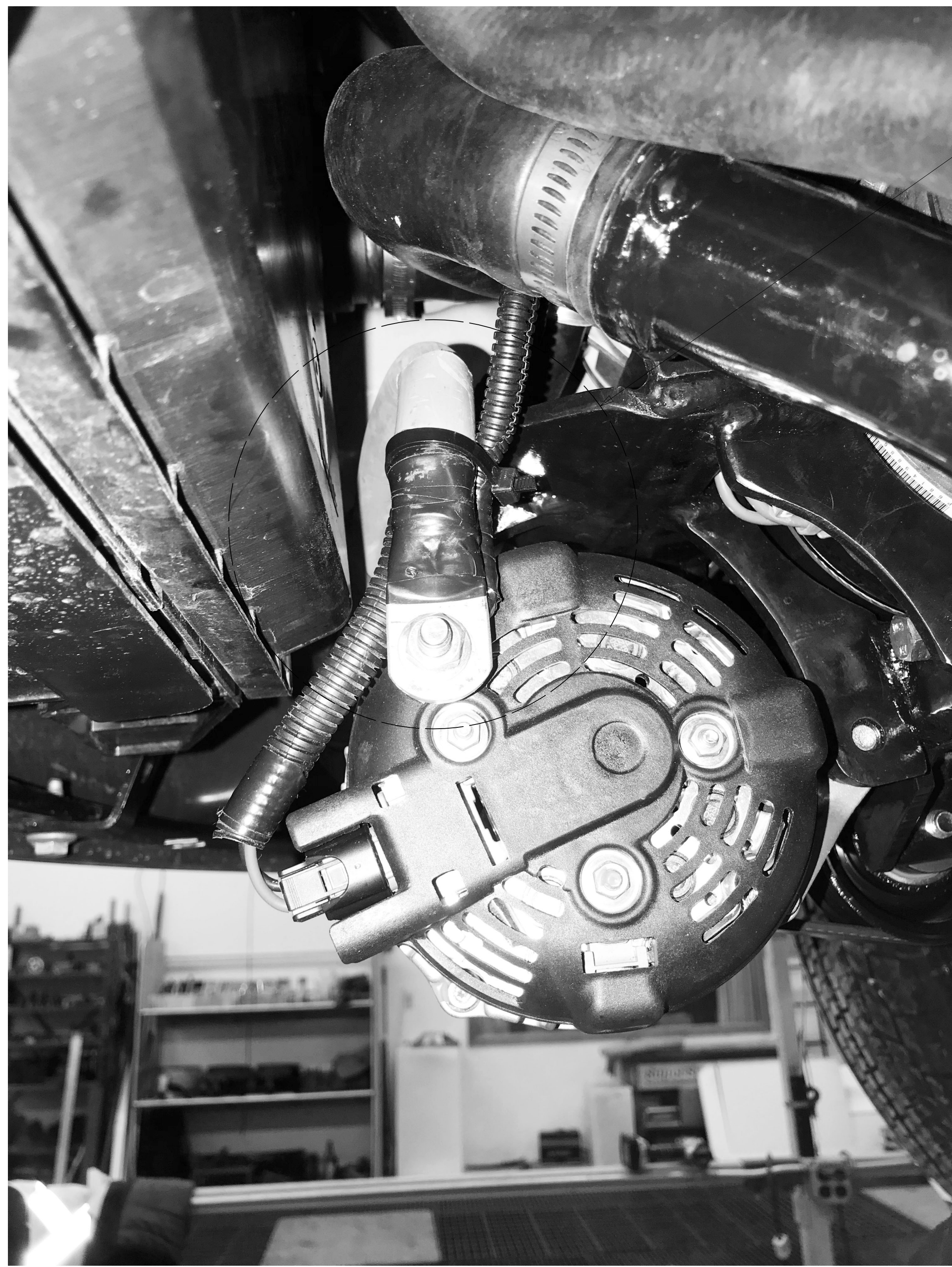
FOR ELECTRICAL CALLOUTS SEE DWG NO. 121339-01-000

265 CODES/STANDARDS-CSA/CMVSS
1B1 CODES/STANDARDS USA

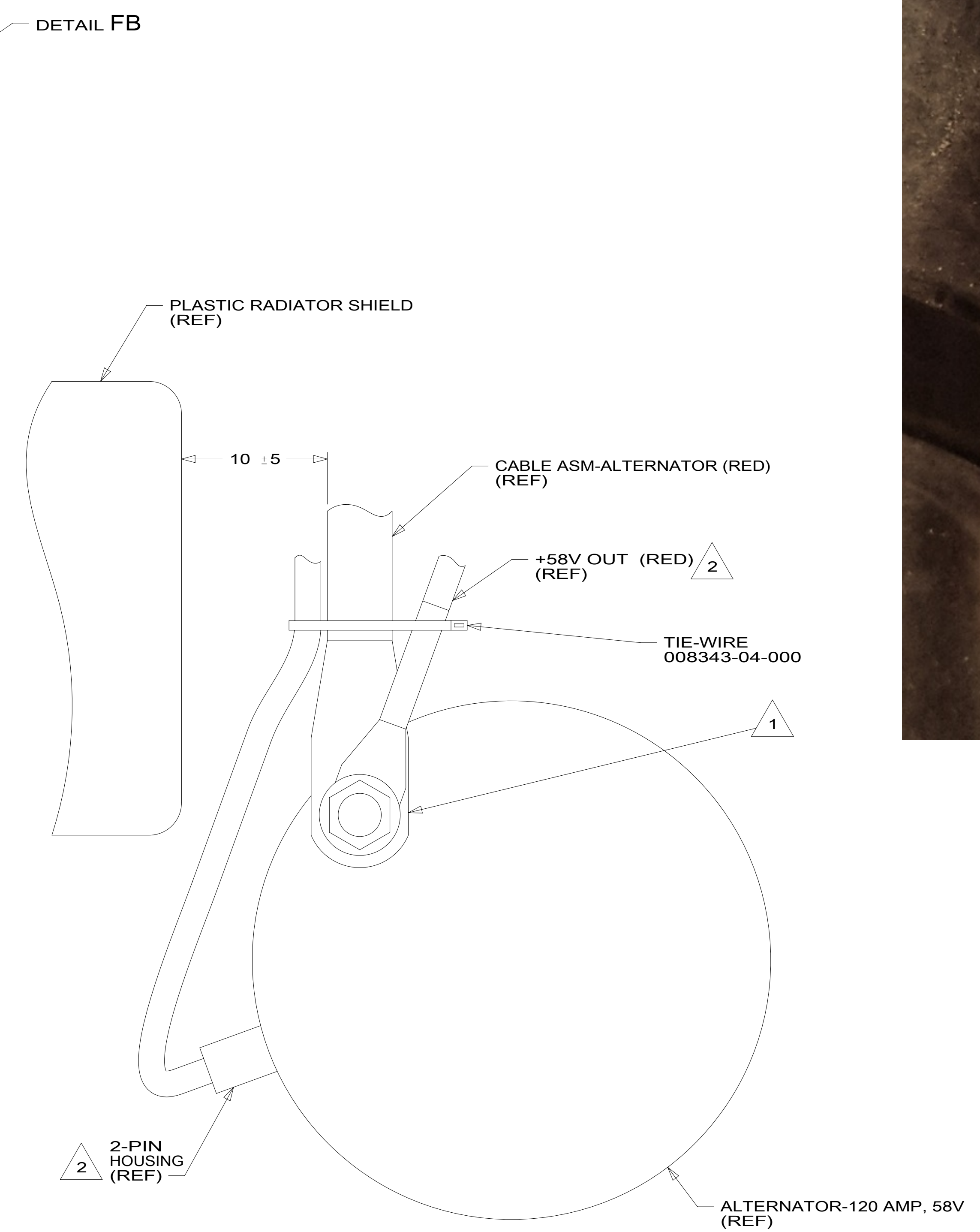
DESCRIPTION:		1B1 265
BATTERY INSTL		
SHEET:	ITEM/PART NO.:	REV
4 OF 9	000130665 / 32556901000	

8 7 6 5 4 3 2 1 10-Oct-2018





VIEW FA



VIEW FA



VIEW FB

- NOTES:
- 2 PART OF WIRE ASM-LITHIUM SYSTEM. STACK UP AS SHOWN.
 - 1 ATTACH CABLE ASM-ALTERNATOR (RED) TO ALTERNATOR-120 AMP, 58V ENSURING RING TERMINAL IS VERTICAL.

FOR ELECTRICAL TORQUE SPECIFICATIONS SEE DWG NO. 128783-01-000

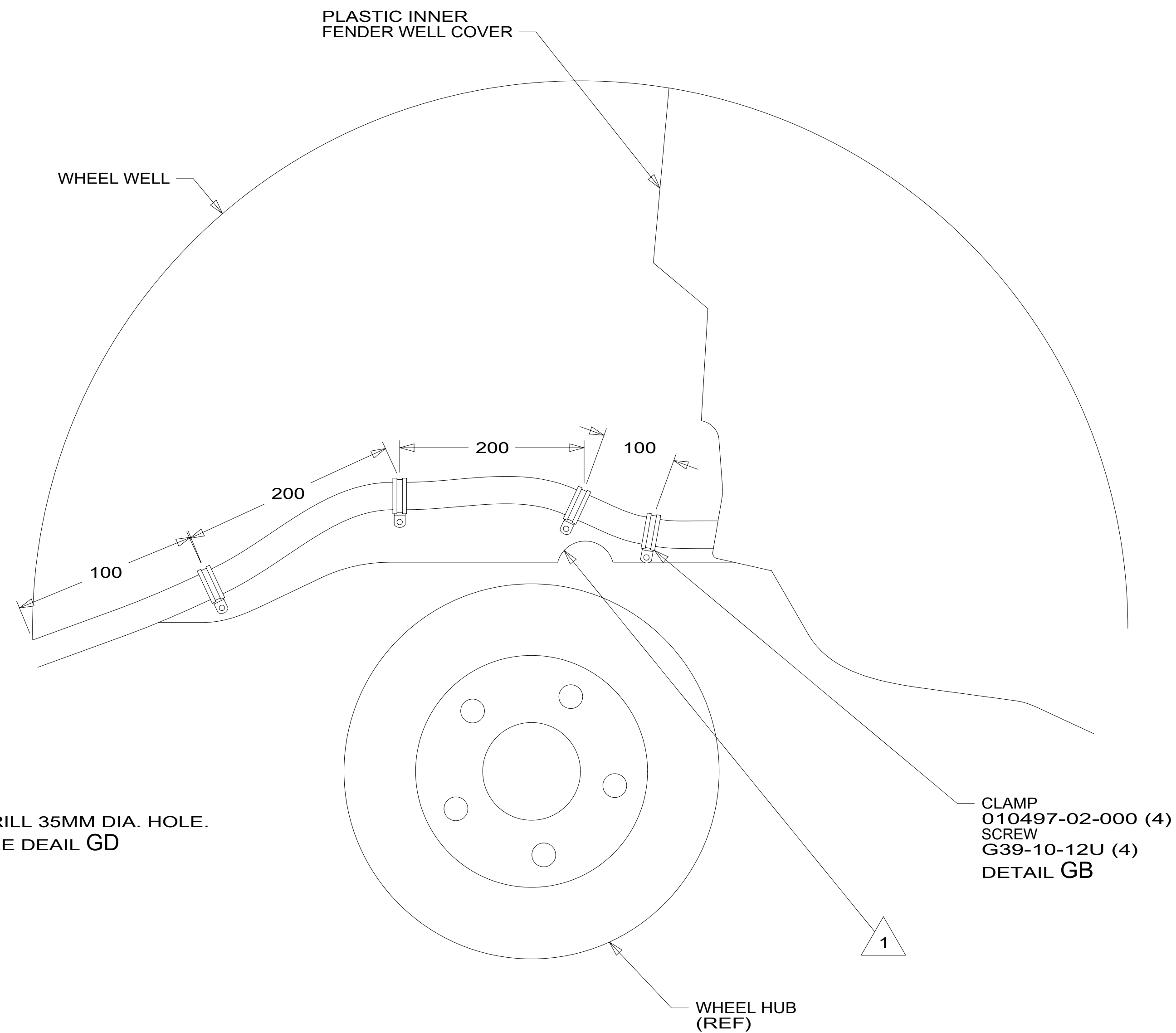
FOR ELECTRICAL CALLOUTS SEE DWG NO. 121339-01-000

265 CODES/STANDARDS-CSA/CMVSS
 1B1 CODES/STANDARDS USA

DESCRIPTION:		1B1 265
BATTERY INSTL		
SHEET:	ITEM/PART NO.:	REV
6 OF 9	000130665 / 32556901000	



VIEW GA



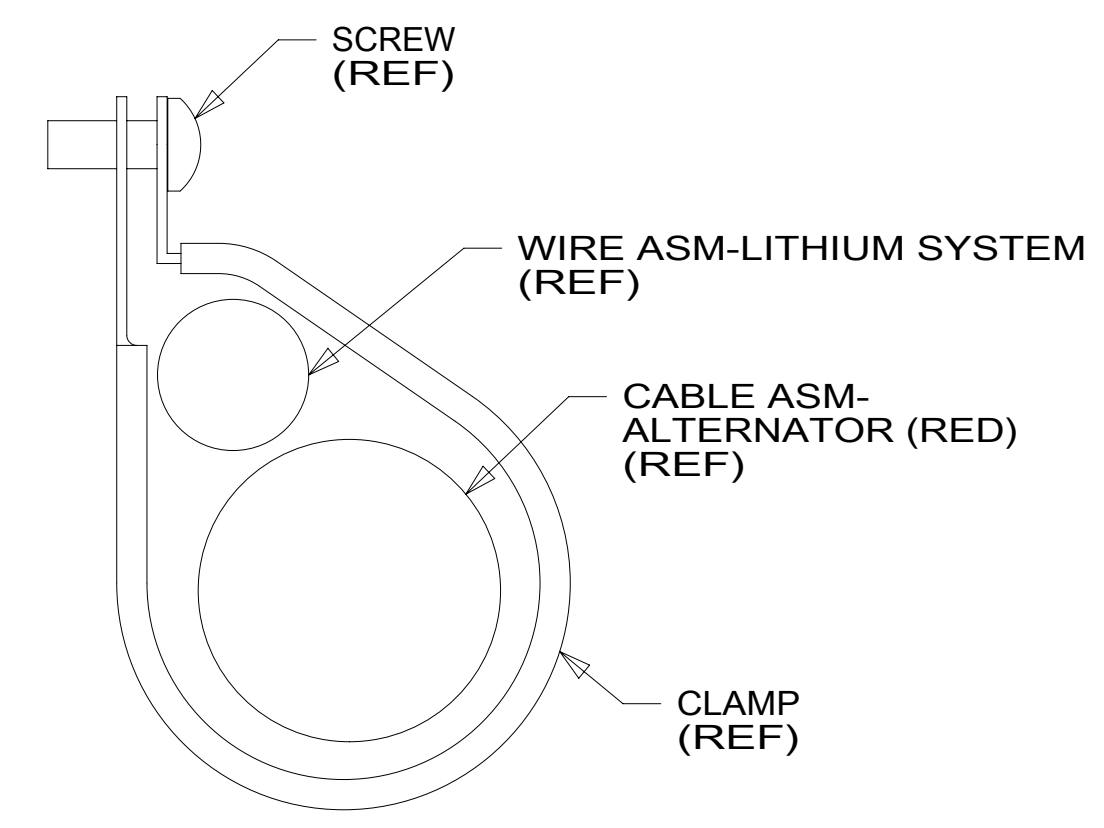
VIEW GA



DETAIL GD



DETAIL GC



DETAIL GB
(4 PLACES)

1 CABLES TO BE MOUNTED ABOVE CV JOINT CLEARANCE NOTCH. SEE DETAIL GC.

NOTES:

FOR ELECTRICAL TORQUE SPECIFICATIONS SEE DWG NO. 128783-01-000

X-X FOR ELECTRICAL CALLOUTS SEE DWG NO. 121339-01-000

265 CODES/STANDARDS-CSA/CMVSS

1B1 CODES/STANDARDS USA

1B1 265

DESCRIPTION:

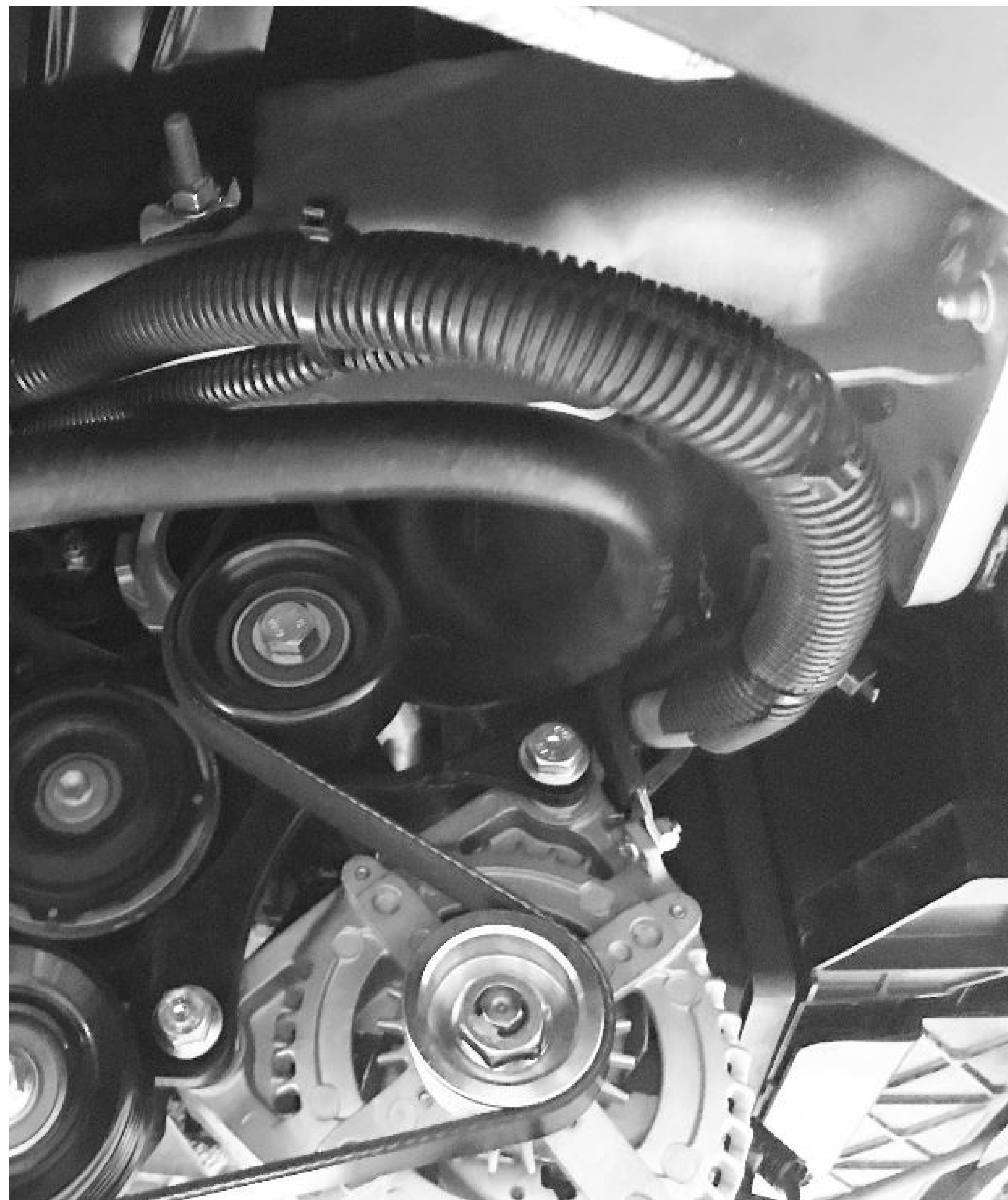
BATTERY INSTL

SHEET: 7 OF 9

ITEM/PART NO: 000130665 / 32556901000

REV

1 10-Oct-2018

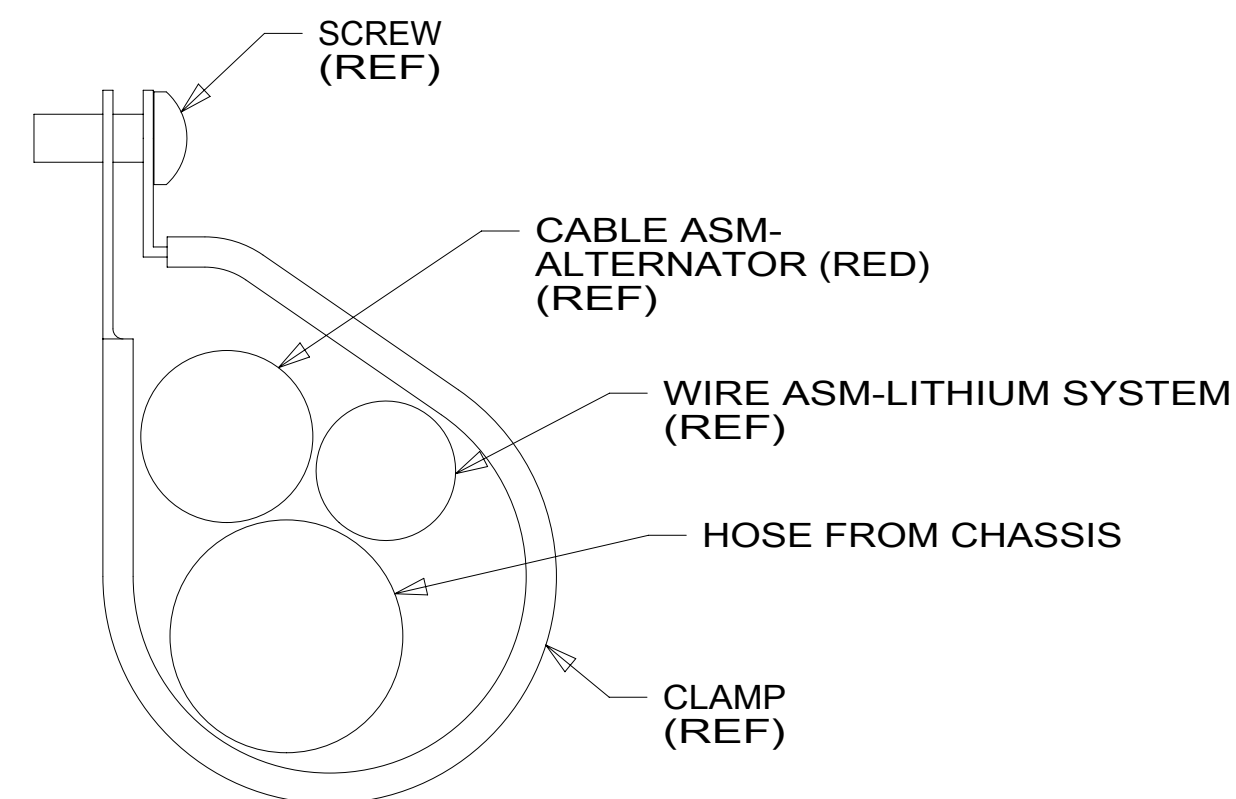


VIEW HA 1



VIEW HB

CLAMP
083610-02-000
SCREW
G39-10-12U
DETAIL HC 2



DETAIL HC 3

- 3 ACTUAL POSITIONING OF CABLES, WIRES, AND LINES DEPENDS ON HOW THEY ARE POSITIONED ON CHASSIS FROM MANUFACTURER. THE POSITION CAN VARY FROM ONE CHASSIS TO ANOTHER.
- 2 CENTER CLAMP BELOW FENDER MOUNT BRACKET.
- 1 ROUTE CABLES ALONG A/C SUCTION LINES.

NOTES:

FOR ELECTRICAL TORQUE SPECIFICATIONS SEE DWG NO. 128783-01-000

FOR ELECTRICAL CALLOUTS SEE DWG NO. 121339-01-000

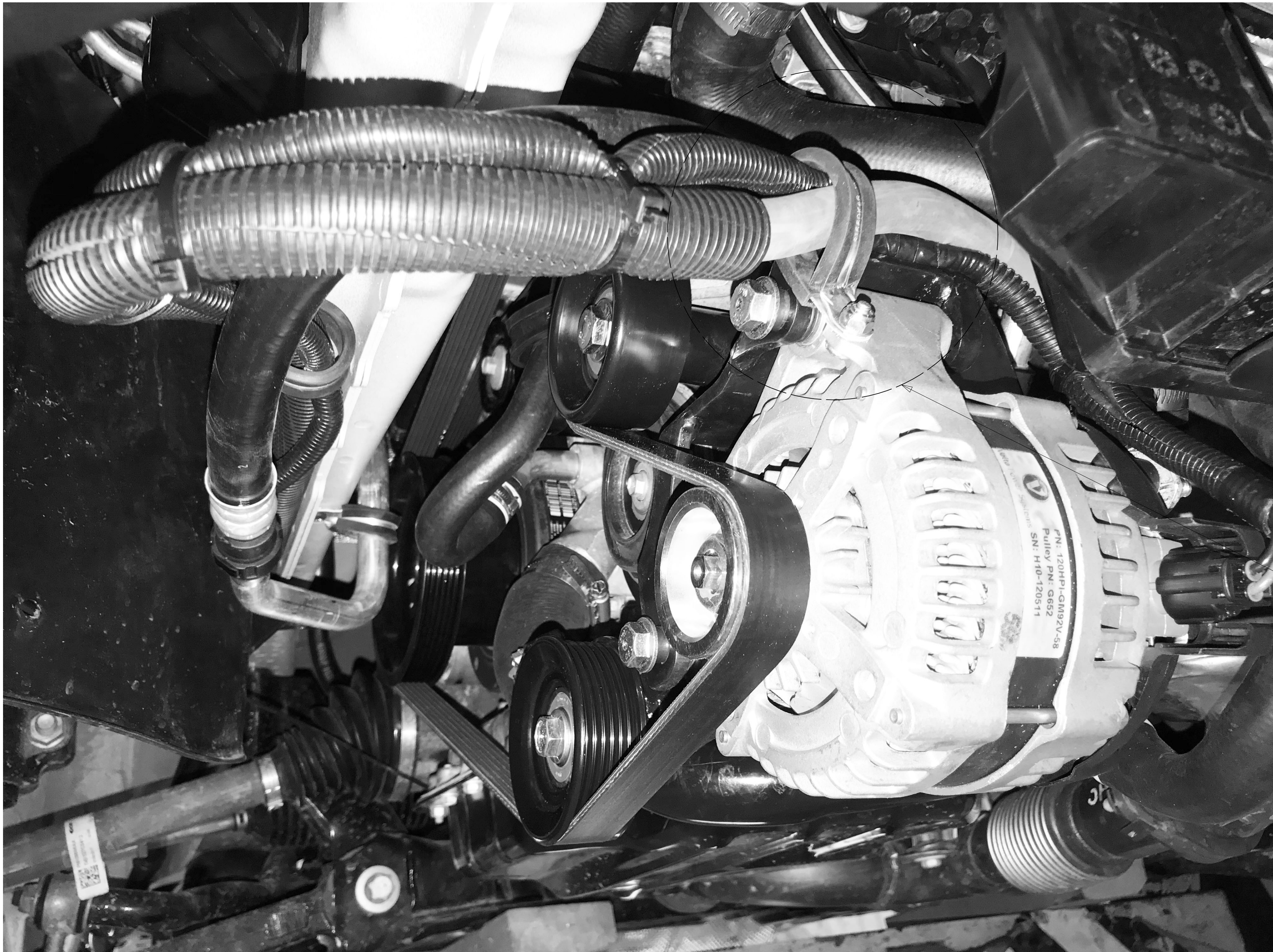
265 CODES/STANDARDS-CSA/CMVSS

1B1 CODES/STANDARDS USA

1B1 265

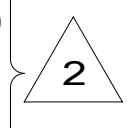
DESCRIPTION: **BATTERY INSTL**

SHEET: 8 OF 9 ITEM/PART NO: 000130665 / 32556901000 REV



ADD CONVOLUTED TUBING 041953-11-000 (300MM) TO HEATER HOSE AS SHOWN AND IMMOBILIZE EACH END WITH TIE-WIRE 15IN BLK HEAT STABLE 008343-04-000 (2)

CLAMP 010497-03-000
NUT D28-10-00U
SCREW 000G19-10-12U



ADD CONVOLUTED TUBING 041953-11-000 (300MM) TO A/C SUCTION HOSE AS SHOWN AND IMMOBILIZE EACH END WITH TIE-WIRE 15IN BLK HEAT STABLE 008343-04-000 (2)



IMMOBILIZE LOWER STEEL RADIATOR HOSE TO ALTERNATOR BRACKET WITH TIE-WIRE 15IN BLK HEAT STABLE 008343-04-000 AS SHOWN.



2 ATTACH CLAMP DIRECTLY TO ALTERNATOR-120 AMP, 58V.

1. ADD TIE-WIRE 008343-04-000 (2) EVENLY SPACED AS SHOWN.

NOTES:

FOR ELECTRICAL TORQUE SPECIFICATIONS SEE DWG NO. 128783-01-000

FOR ELECTRICAL CALLOUTS SEE DWG NO. 121339-01-000

265 CODES/STANDARDS-CSA/CMVSS
1B1 CODES/STANDARDS USA

1B1 265

DESCRIPTION: BATTERY INSTL

SHEET: 9 OF 9 ITEM/PART NO: 000130665 / 32556901000

REV