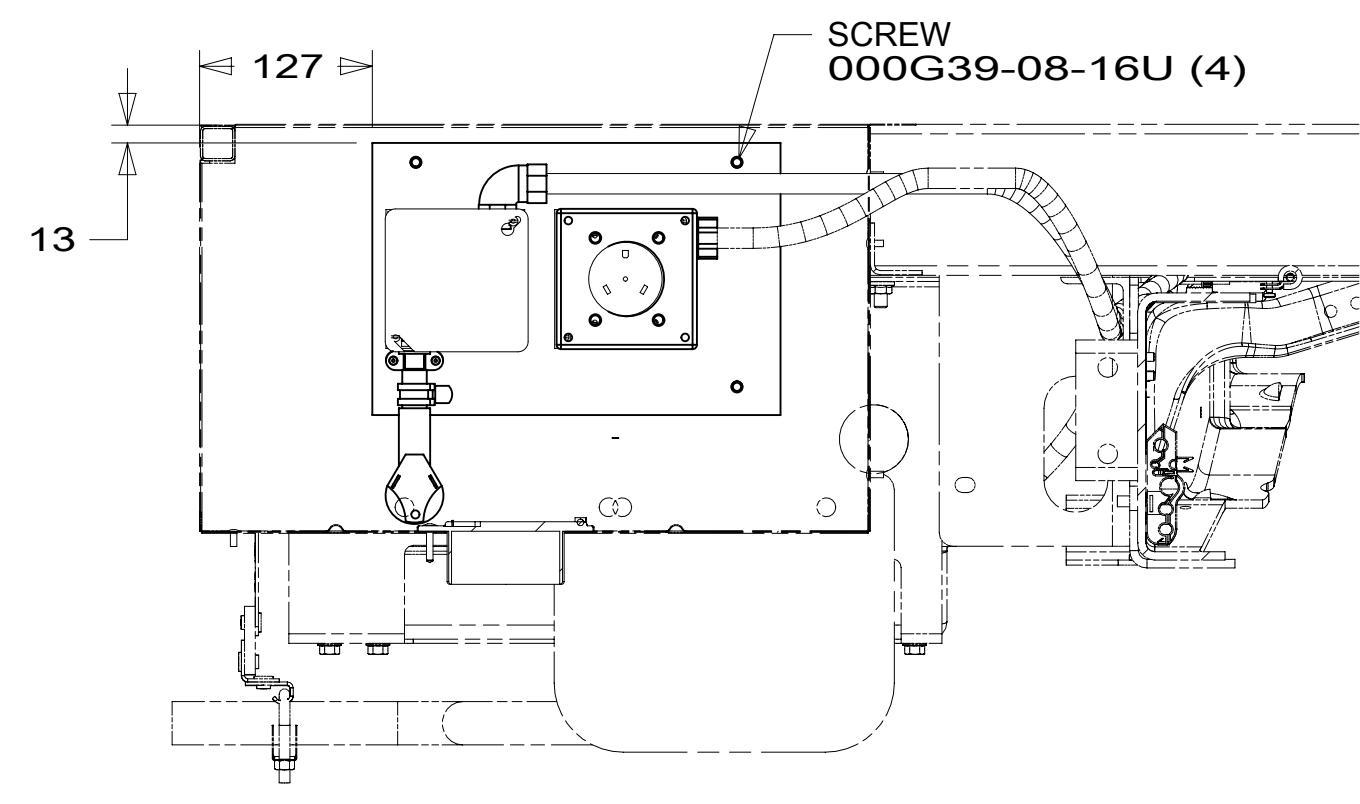
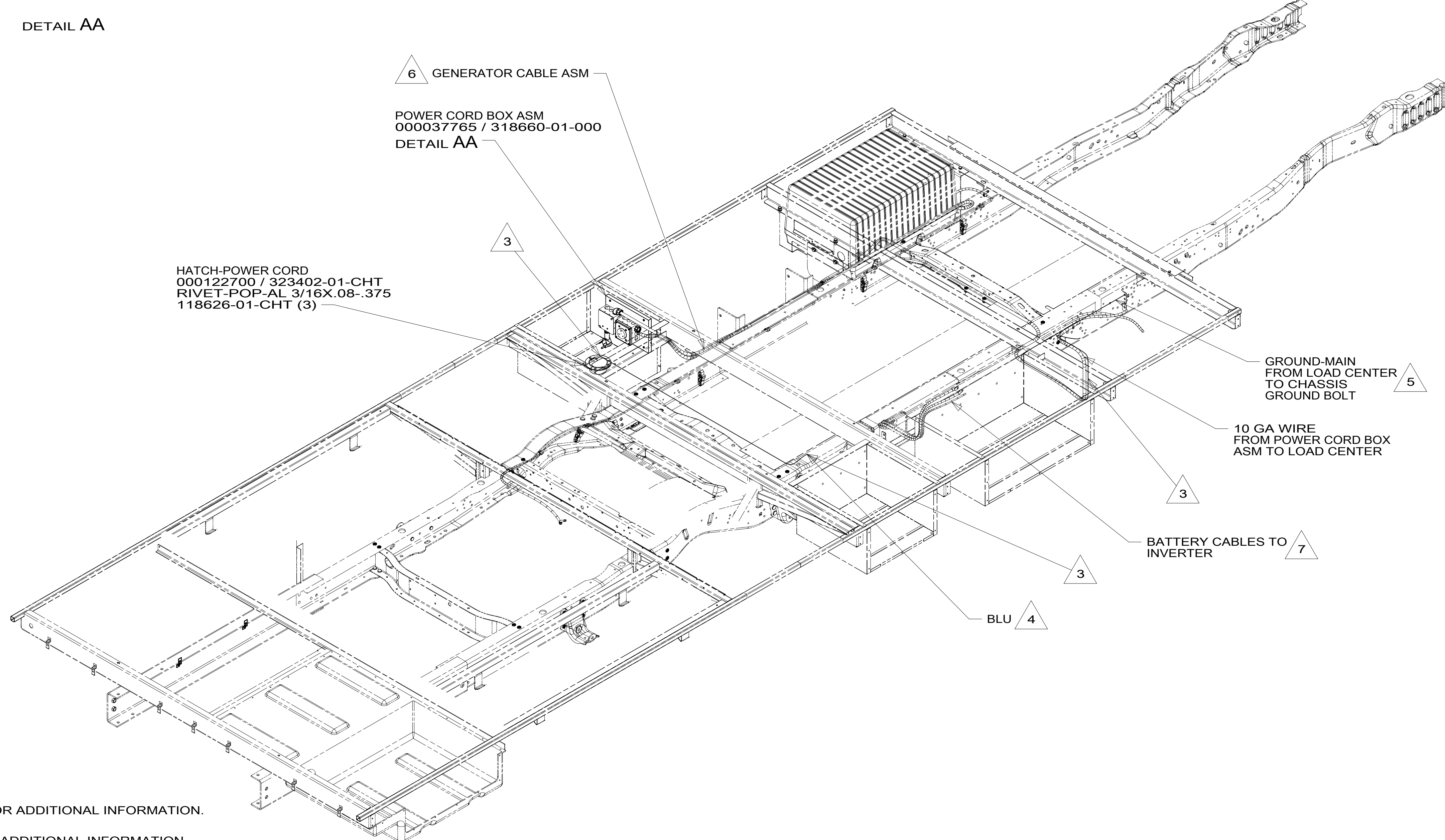


8 7 6 5 4 3 2 1



DETAIL AA



- 6 SEE GENERATOR INSTALL FOR ADDITIONAL INFORMATION.
- 5 SEE LOAD CENTER ASM FOR ADDITIONAL INFORMATION.
- 4 WIRE ROUTED IN FLOOR.
- 3 ROUTE WIRE THRU FLOOR.

2. ALL 110V WIRE TO BE CLAMPED WITH CLAMP 10497-05-000 WITHIN 200MM OF OUTLET BOXES, USE SCREW G67-10-12U.

1. AT MINIMUM ALL WIRES TO BE SUPPORTED AND SECURED PER CODE REQUIREMENTS. USE CLAMP 10495 OR 10497 OR WIRE TIE 8343 OR 108046 AND SCREW G67-XX-XXX OR G56-XX-XXX AS APPROPRIATE FOR INSTALLATION.

7 SEE BATTERY INSTL FOR ADDITIONAL INFORMATION.

FOR ELECTRICAL TORQUE SPECIFICATIONS SEE DWG NO. 128783-01-000

FOR ELECTRICAL CALLOUTS SEE DWG NO. 121339-01-000

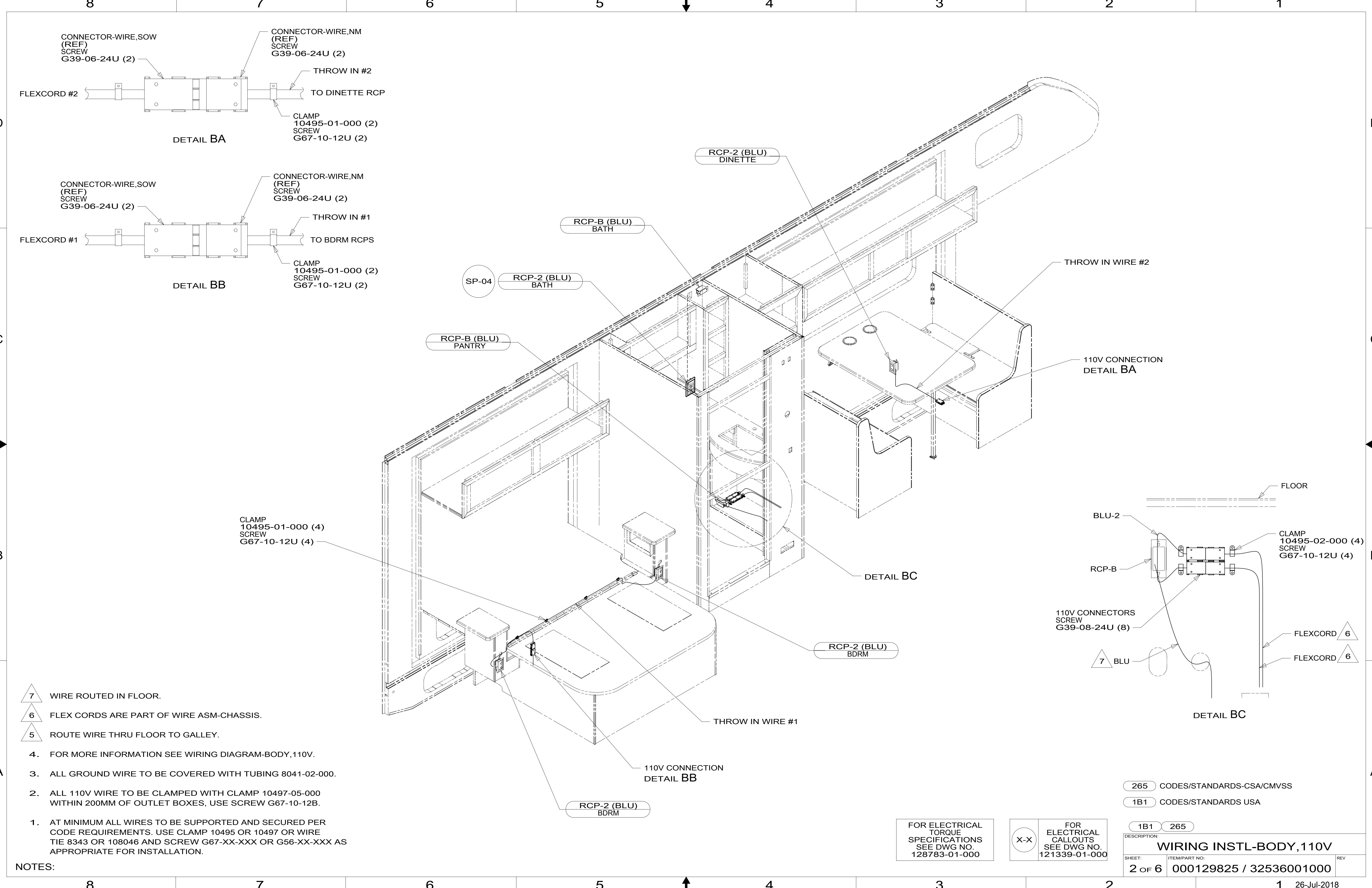
- 265 CODES/STANDARDS-CSA/CMVSS
- 1B1 CODES/STANDARDS USA
- 1B1 265



DSNR:		ALL DIMENSIONS ARE IN MILLIMETERS	
DFFR:		MATERIAL:	
UNSPECIFIED TOLERANCES:		WEIGHT: (LBS)	FIRST USED:
WHOLE DIM (X)	: 3		19 927D
ONE-PLACE (X.X)	: 1.5		
TWO-PLACE (X.XX)	: 0.50		
ANGLE	: 1°		
REFER TO ES0018 FOR FASTENER TIGHTENING GUIDELINES			
<b>DESCRIPTION:</b>			
<b>WIRING INSTL-BODY, 110V</b>			
SHEET:	ITEM/PART NO.:	REF:	REV:
1 OF 6	000129825 / 32536001000		

NOTES:

8 7 6 5 4 3 2 1



8 7 6 5 4 3 2 1

D

D

C

C

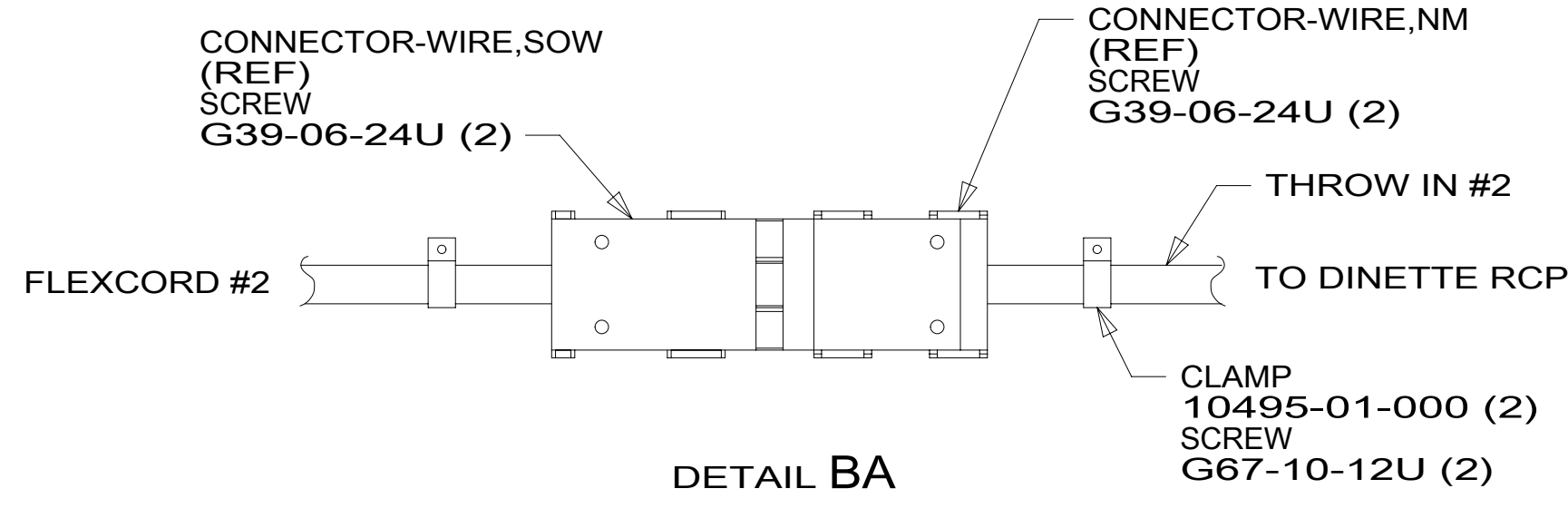
B

B

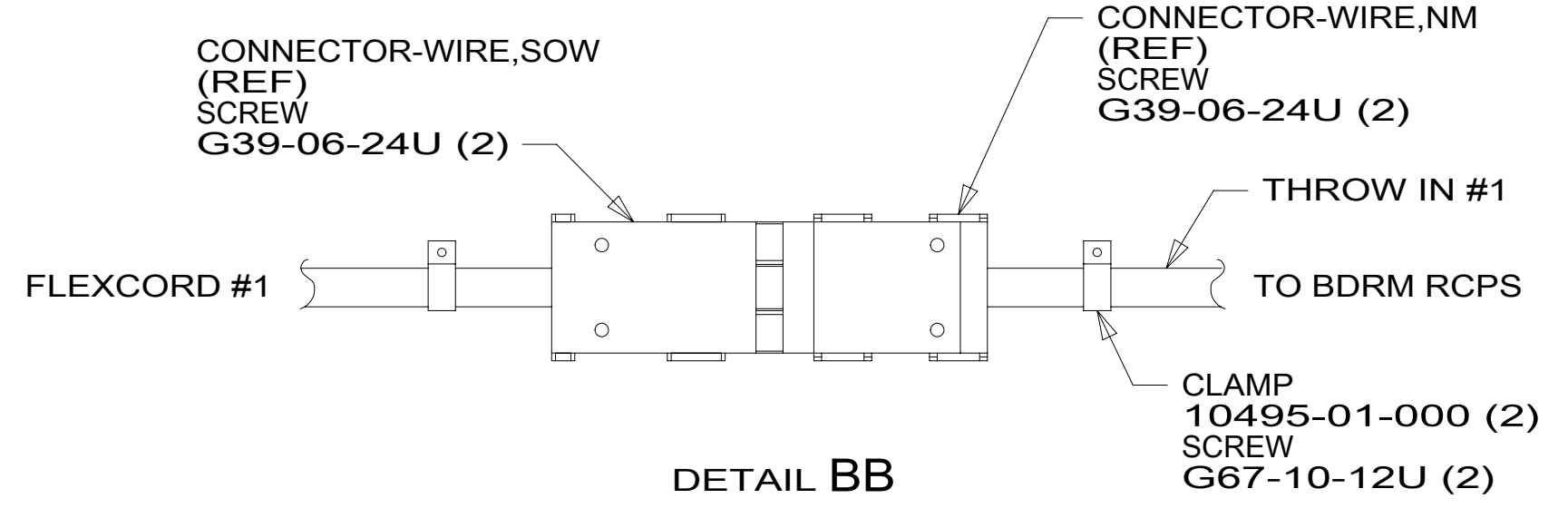
A

A

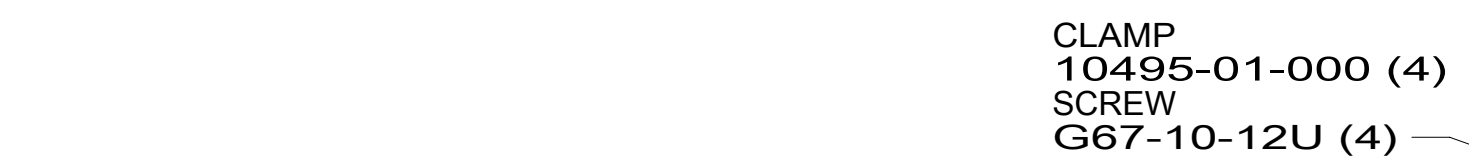
8 7 6 5 4 3 2 1 26-Jul-2018



DETAIL BA



DETAIL BB



- NOTES:
- 7 WIRE ROUTED IN FLOOR.
  - 6 FLEX CORDS ARE PART OF WIRE ASM-CHASSIS.
  - 5 ROUTE WIRE THRU FLOOR TO GALLEY.
  4. FOR MORE INFORMATION SEE WIRING DIAGRAM-BODY, 110V.
  3. ALL GROUND WIRE TO BE COVERED WITH TUBING 8041-02-000.
  2. ALL 110V WIRE TO BE CLAMPED WITH CLAMP 10497-05-000 WITHIN 200MM OF OUTLET BOXES, USE SCREW G67-10-12B.
  1. AT MINIMUM ALL WIRES TO BE SUPPORTED AND SECURED PER CODE REQUIREMENTS. USE CLAMP 10495 OR 10497 OR WIRE TIE 8343 OR 108046 AND SCREW G67-XX-XXX OR G56-XX-XXX AS APPROPRIATE FOR INSTALLATION.

RCP-2 (BLU) DINETTE

RCP-B (BLU) BATH

RCP-2 (BLU) BATH

RCP-B (BLU) PANTRY

RCP-2 (BLU) BDRM

RCP-2 (BLU) BDRM

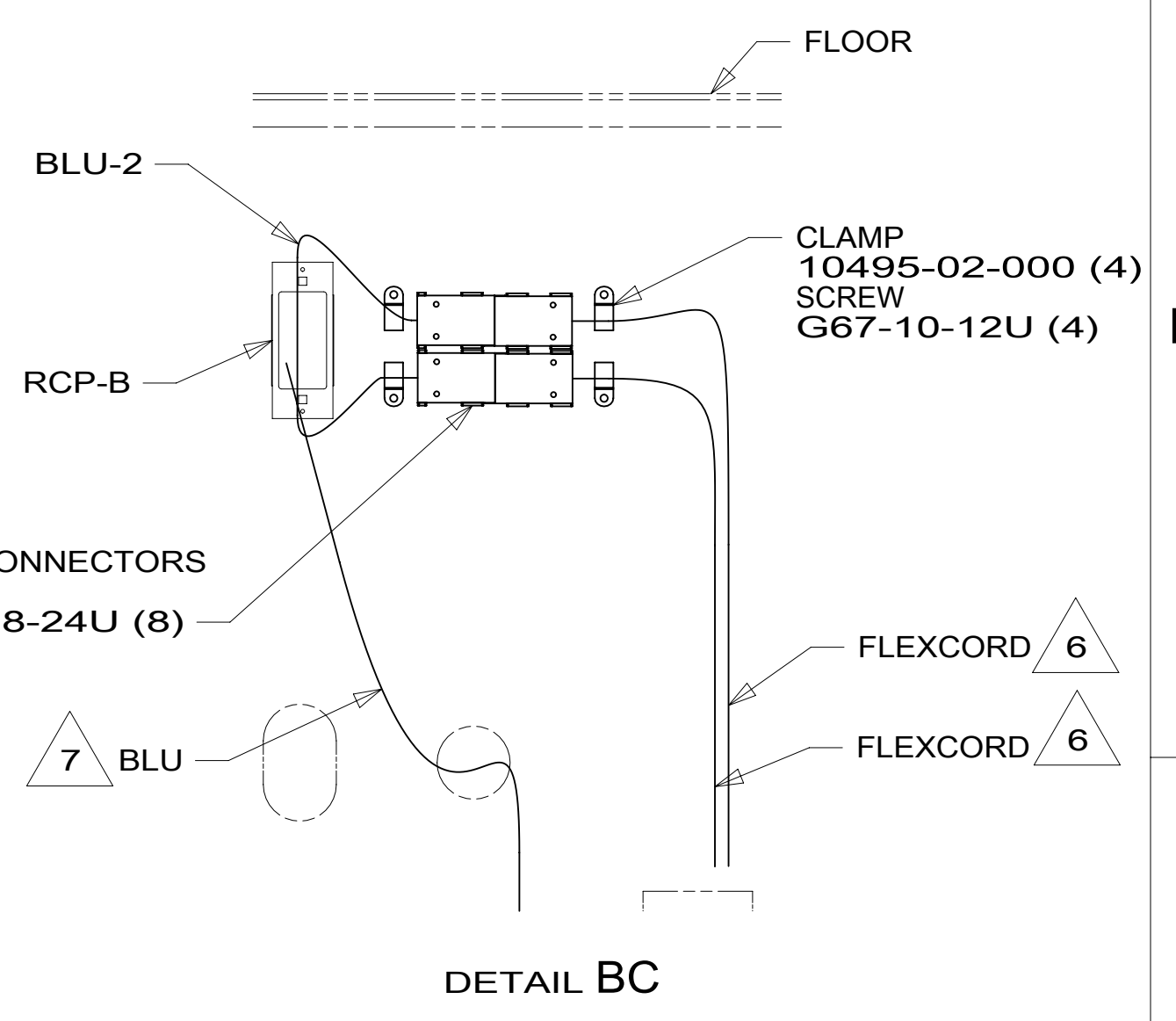
THROW IN WIRE #2

110V CONNECTION DETAIL BA

DETAIL BC

THROW IN WIRE #1

110V CONNECTION DETAIL BB



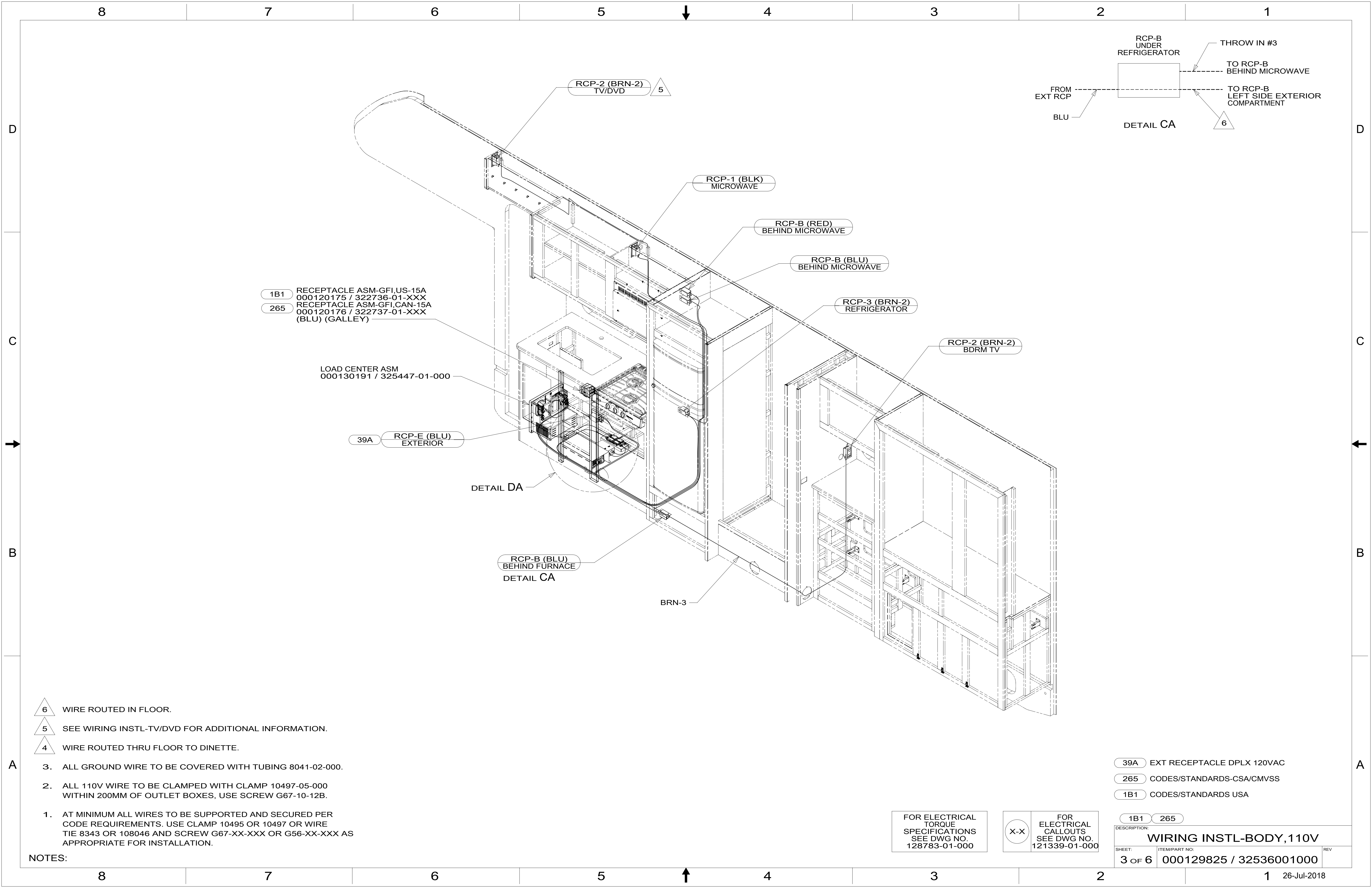
DETAIL BC

FOR ELECTRICAL TORQUE SPECIFICATIONS SEE DWG NO. 128783-01-000

FOR ELECTRICAL CALLOUTS SEE DWG NO. 121339-01-000

265 CODES/STANDARDS-CSA/CMVSS  
1B1 CODES/STANDARDS USA

DESCRIPTION:	
1B1 265	
WIRING INSTL-BODY, 110V	
SHEET:	ITEM/PART NO.:
2 OF 6	000129825 / 32536001000
REV	



1B1 RECEPTACLE ASM-GFI,US-15A  
000120175 / 322736-01-XXX  
265 RECEPTACLE ASM-GFI,CAN-15A  
000120176 / 322737-01-XXX  
(BLU) (GALLEY)

LOAD CENTER ASM  
000130191 / 325447-01-000

39A RCP-E (BLU)  
EXTERIOR

DETAIL DA

RCP-B (BLU)  
BEHIND FURNACE  
DETAIL CA

BRN-3

RCP-2 (BRN-2)  
TV/DVD 5

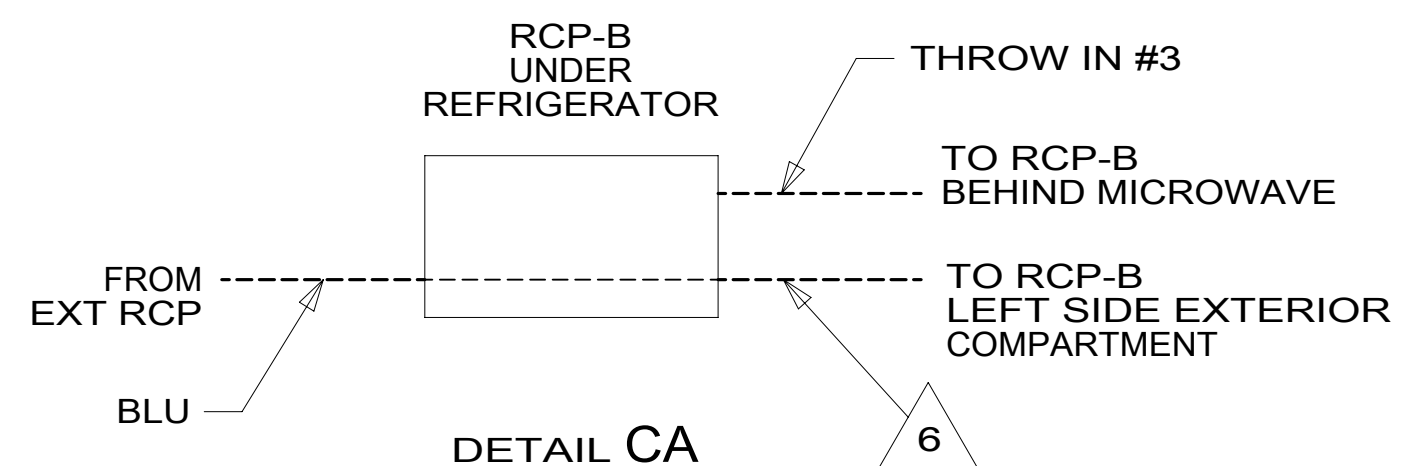
RCP-1 (BLK)  
MICROWAVE

RCP-B (RED)  
BEHIND MICROWAVE

RCP-B (BLU)  
BEHIND MICROWAVE

RCP-3 (BRN-2)  
REFRIGERATOR

RCP-2 (BRN-2)  
BDRM TV



- 6 WIRE ROUTED IN FLOOR.
- 5 SEE WIRING INSTL-TV/DVD FOR ADDITIONAL INFORMATION.
- 4 WIRE ROUTED THRU FLOOR TO DINETTE.

3. ALL GROUND WIRE TO BE COVERED WITH TUBING 8041-02-000.
2. ALL 110V WIRE TO BE CLAMPED WITH CLAMP 10497-05-000 WITHIN 200MM OF OUTLET BOXES, USE SCREW G67-10-12B.
1. AT MINIMUM ALL WIRES TO BE SUPPORTED AND SECURED PER CODE REQUIREMENTS. USE CLAMP 10495 OR 10497 OR WIRE TIE 8343 OR 108046 AND SCREW G67-XX-XXX OR G56-XX-XXX AS APPROPRIATE FOR INSTALLATION.

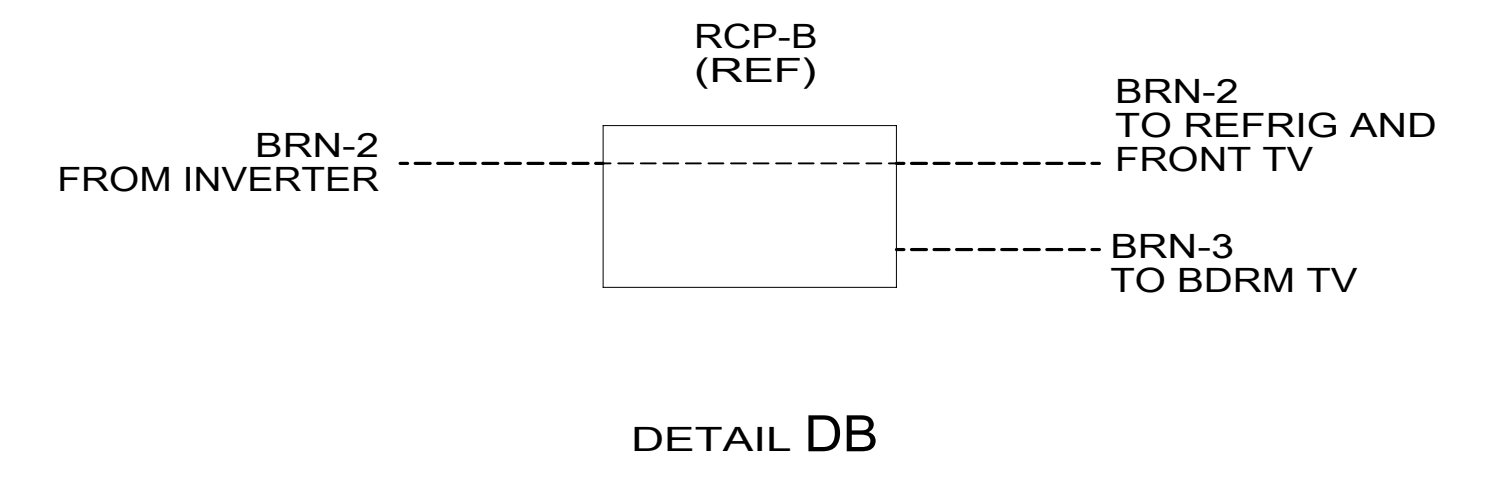
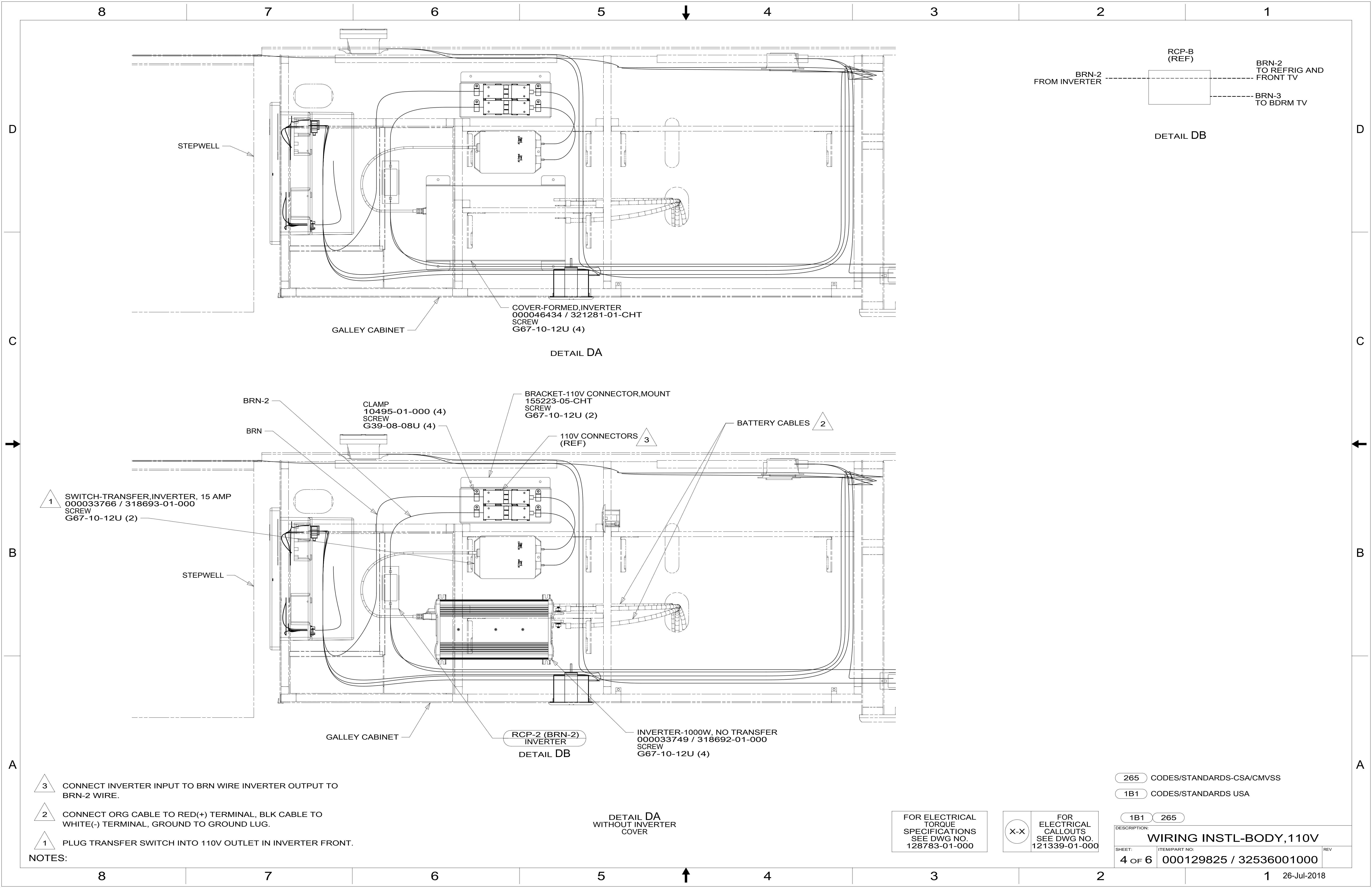
NOTES:

- 39A EXT RECEPTACLE DPLX 120VAC
- 265 CODES/STANDARDS-CSA/CMVSS
- 1B1 CODES/STANDARDS USA

FOR ELECTRICAL  
TORQUE  
SPECIFICATIONS  
SEE DWG NO.  
128783-01-000

FOR  
ELECTRICAL  
CALLOUTS  
SEE DWG NO.  
121339-01-000

DESCRIPTION: <b>WIRING INSTL-BODY, 110V</b>	
SHEET: <b>3 OF 6</b>	ITEM/PART NO.: <b>000129825 / 32536001000</b>
REV	



COVER-FORMED INVERTER  
000046434 / 321281-01-CHT  
SCREW  
G67-10-12U (4)

DETAIL DA

BRACKET-110V CONNECTOR, MOUNT  
155223-05-CHT  
SCREW  
G67-10-12U (2)

110V CONNECTORS (REF)

BATTERY CABLES

CLAMP  
10495-01-000 (4)  
SCREW  
G39-08-08U (4)

INVERTER-1000W, NO TRANSFER  
000033749 / 318692-01-000  
SCREW  
G67-10-12U (4)

RCP-2 (BRN-2)  
INVERTER  
DETAIL DB

DETAIL DA  
WITHOUT INVERTER  
COVER

1 SWITCH-TTRANSFER, INVERTER, 15 AMP  
000033766 / 318693-01-000  
SCREW  
G67-10-12U (2)

- NOTES:
- 3 CONNECT INVERTER INPUT TO BRN WIRE INVERTER OUTPUT TO BRN-2 WIRE.
  - 2 CONNECT ORG CABLE TO RED(+) TERMINAL, BLK CABLE TO WHITE(-) TERMINAL, GROUND TO GROUND LUG.
  - 1 PLUG TRANSFER SWITCH INTO 110V OUTLET IN INVERTER FRONT.

265 CODES/STANDARDS-CSA/CMVSS

1B1 CODES/STANDARDS USA

1B1 265

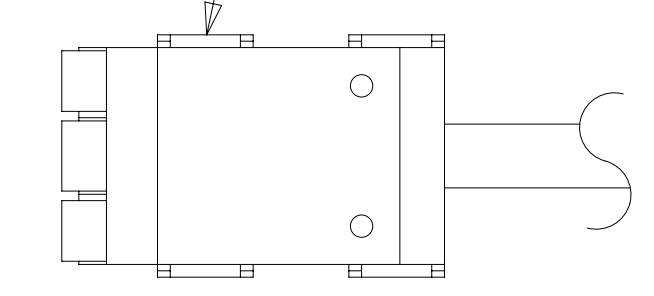
FOR ELECTRICAL  
TORQUE  
SPECIFICATIONS  
SEE DWG NO.  
128783-01-000

FOR  
ELECTRICAL  
CALLOUTS  
SEE DWG NO.  
121339-01-000

DESCRIPTION: <b>WIRING INSTL-BODY, 110V</b>		
SHEET: <b>4 OF 6</b>	ITEM/PART NO.: <b>000129825 / 32536001000</b>	REV

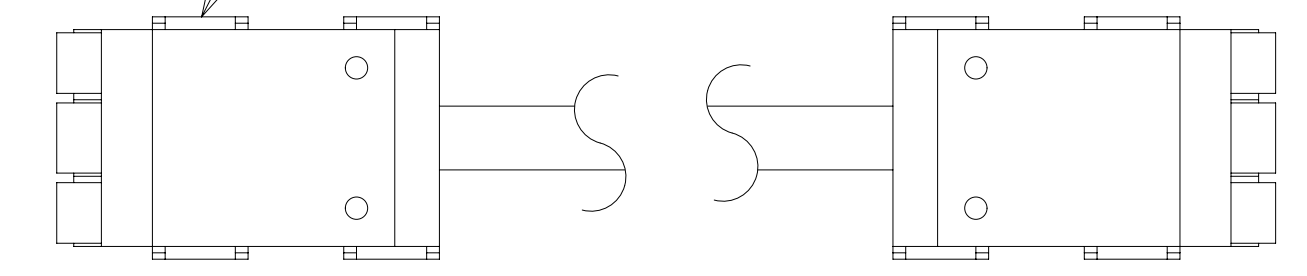
RED	1B1	136135-07-048	
	265	136136-07-048	
BLK	1B1	136135-06-052	
	265	136136-06-052	
BRN	1B1	136131-03-013	4
	265	136134-03-013	4
BLU	1B1	136131-02-087	
	265	136134-02-087	
MAIN	1B1	136137-01-048	5
	265	136138-01-048	5
GROUND MAIN		136145-06-023	
BLU-2	1B1	136131-24-005	6
	265	136134-24-005	6
BRN-2	1B1	136131-19-077	4
	265	136134-19-077	4
BRN-3	1B1	136131-22-050	
	265	136134-22-050	
THROW IN WIRE #1	1B1	136131-24-035	4
	265	136134-24-035	4
THROW IN WIRE #2	1B1	136131-24-007	4
	265	136134-24-007	4
THROW IN WIRE #3	1B1	136131-02-028	
	265	136134-02-028	

CONNECTOR-WIRE,NM,CLEAR  
144283-02-000



DETAIL EA

CONNECTOR-WIRE,NM,CLEAR  
144283-02-000 (2)



DETAIL EB

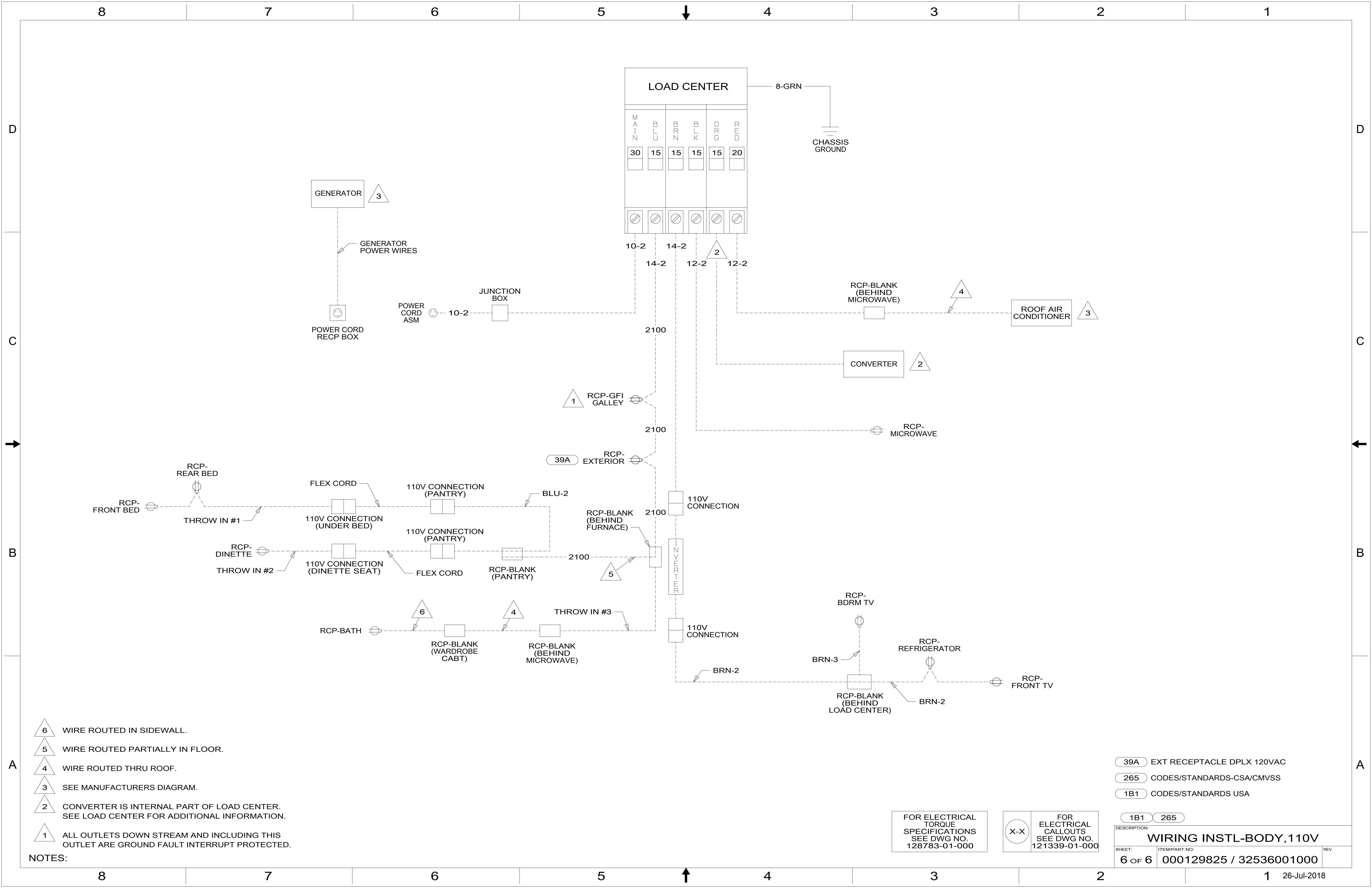
- NOTES:
- 1. ALL GROUND WIRES TO BE COVERED WITH TUBING 8041-02-000.
  - 2. SECURE WIRES TO BACKSIDE OF LOAD CENTER WITH WIRE TIE 116673-01-000.
  - 3. SEE WIRING INSTL-BODY,12V FOR ADDITIONAL INFORMATION.
- 6 SEE DETAIL **EB** FOR CONNECTOR INSTALLATION.  
5 WIRE PREP TO INSTALL ON POWER CORD BOX ASM. LOAD CENTER END WILL BE INSTALLED ON LINE.  
4 SEE DETAIL **EA** FOR CONNECTOR INSTALLATION.

265 CODES/STANDARDS-CSA/CMVSS  
1B1 CODES/STANDARDS USA

FOR ELECTRICAL TORQUE SPECIFICATIONS SEE DWG NO. 128783-01-000

FOR ELECTRICAL CALLOUTS SEE DWG NO. 121339-01-000

<span style="border: 1px solid black; border-radius: 10px; padding: 2px;">1B1</span> <span style="border: 1px solid black; border-radius: 10px; padding: 2px;">265</span>	
<b>DESCRIPTION:</b>	
<b>WIRING INSTL-BODY,110V</b>	
SHEET:	ITEM/PART NO:
5 OF 6	000129825 / 32536001000
REV	



- △ 6 WIRE ROUTED IN SIDEWALL.
- △ 5 WIRE ROUTED PARTIALLY IN FLOOR.
- △ 4 WIRE ROUTED THRU ROOF.
- △ 3 SEE MANUFACTURERS DIAGRAM.
- △ 2 CONVERTER IS INTERNAL PART OF LOAD CENTER. SEE LOAD CENTER FOR ADDITIONAL INFORMATION.
- △ 1 ALL OUTLETS DOWN STREAM AND INCLUDING THIS OUTLET ARE GROUND FAULT INTERRUPT PROTECTED.

NOTES:

- 39A EXT RECEPTACLE DPLX 120VAC
- 265 CODES/STANDARDS-CSA/CMVSS
- 1B1 CODES/STANDARDS USA

FOR ELECTRICAL TORQUE SPECIFICATIONS SEE DWG NO. 128783-01-000

FOR ELECTRICAL CALLOUTS SEE DWG NO. 121339-01-000

DESCRIPTION: <b>WIRING INSTL-BODY, 110V</b>		
SHEET: <b>6 OF 6</b>	ITEM/PART NO.: <b>000129825 / 32536001000</b>	REV