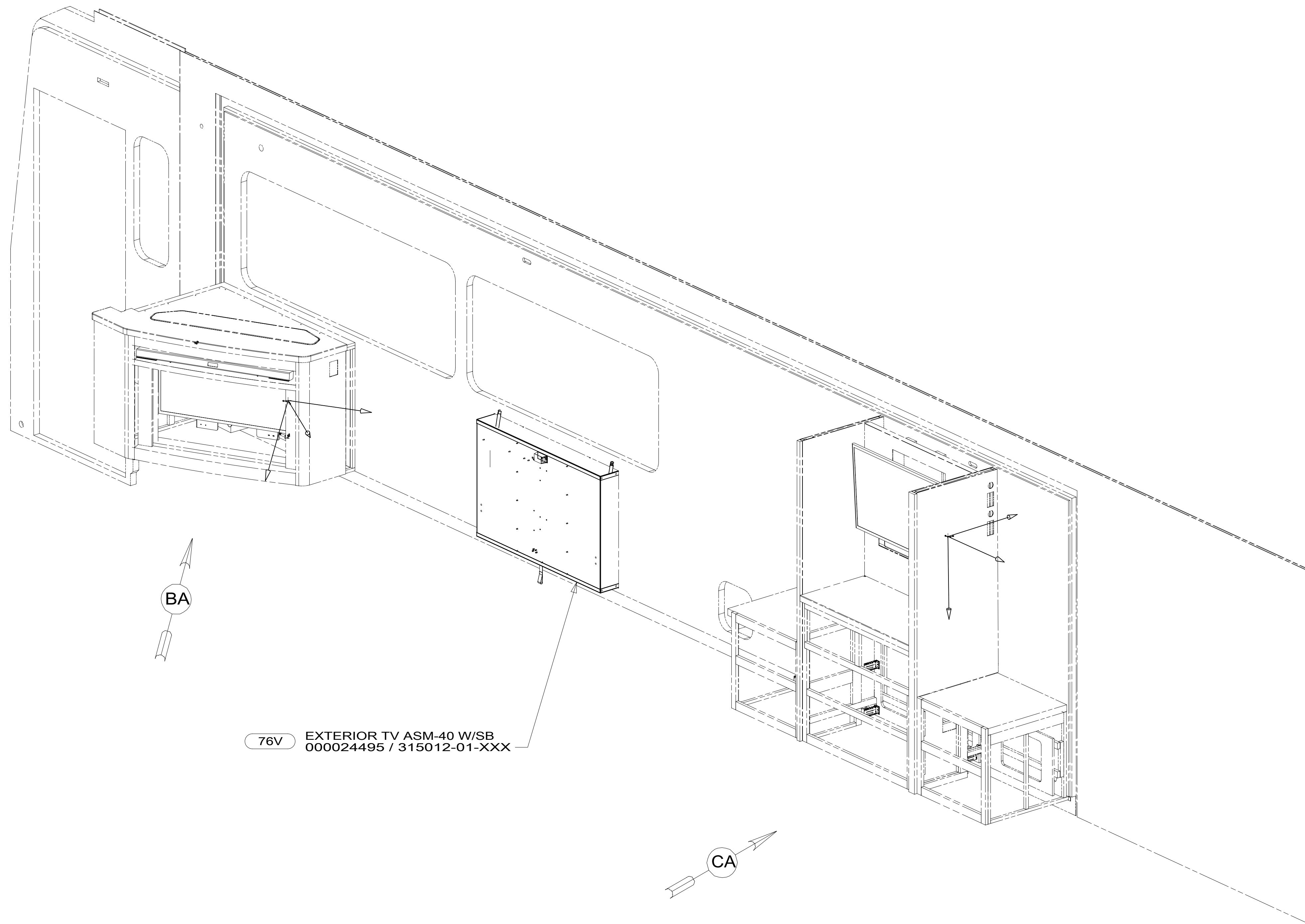
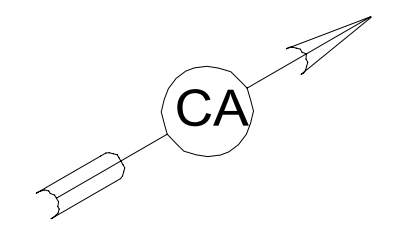
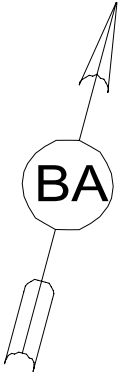


8 7 6 5 4 3 2 1

D  
C  
B  
A



76V EXTERIOR TV ASM-40 W/SB  
000024495 / 315012-01-XXX



76V EXT ENT CTR W/TV & SOUNDBAR

265 CODES/STANDARDS-CSA/CMVSS

1B1 CODES/STANDARDS USA

1B1 265



DSNR:		ALL DIMENSIONS ARE IN MILLIMETERS	
DFFR:		MATERIAL:	
UNSPECIFIED TOLERANCES:			
WHOLE DIM (X)	: 3		
ONE-PLACE (X.X)	: 1.5		
TWO-PLACE (X.XX)	: 0.50		
ANGLE	: 1°		
REFER TO ES0018 FOR FASTENER TIGHTENING GUIDELINES		WEIGHT: (LBS)	FIRST USED:
			19 P40J

FOR ELECTRICAL TORQUE SPECIFICATIONS SEE DWG NO. 128783-01-000

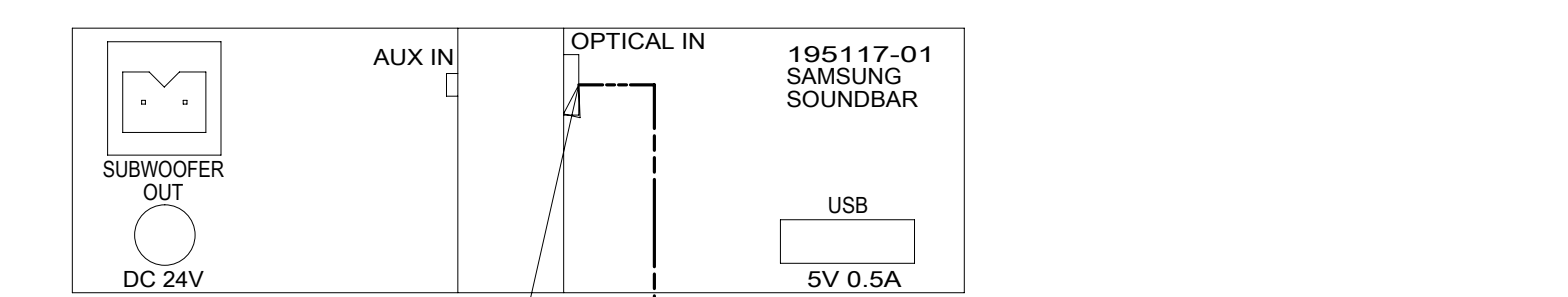
FOR ELECTRICAL CALLOUTS SEE DWG NO. 121339-01-000

DESCRIPTION:  
**WIRING INSTL-AV, COACH**

SHEET: 1 OF 3 ITEM/PART NO.: 000128914 / 32510301000 REF: 1 06-Jan-2022

8 7 6 5 4 3 2 1

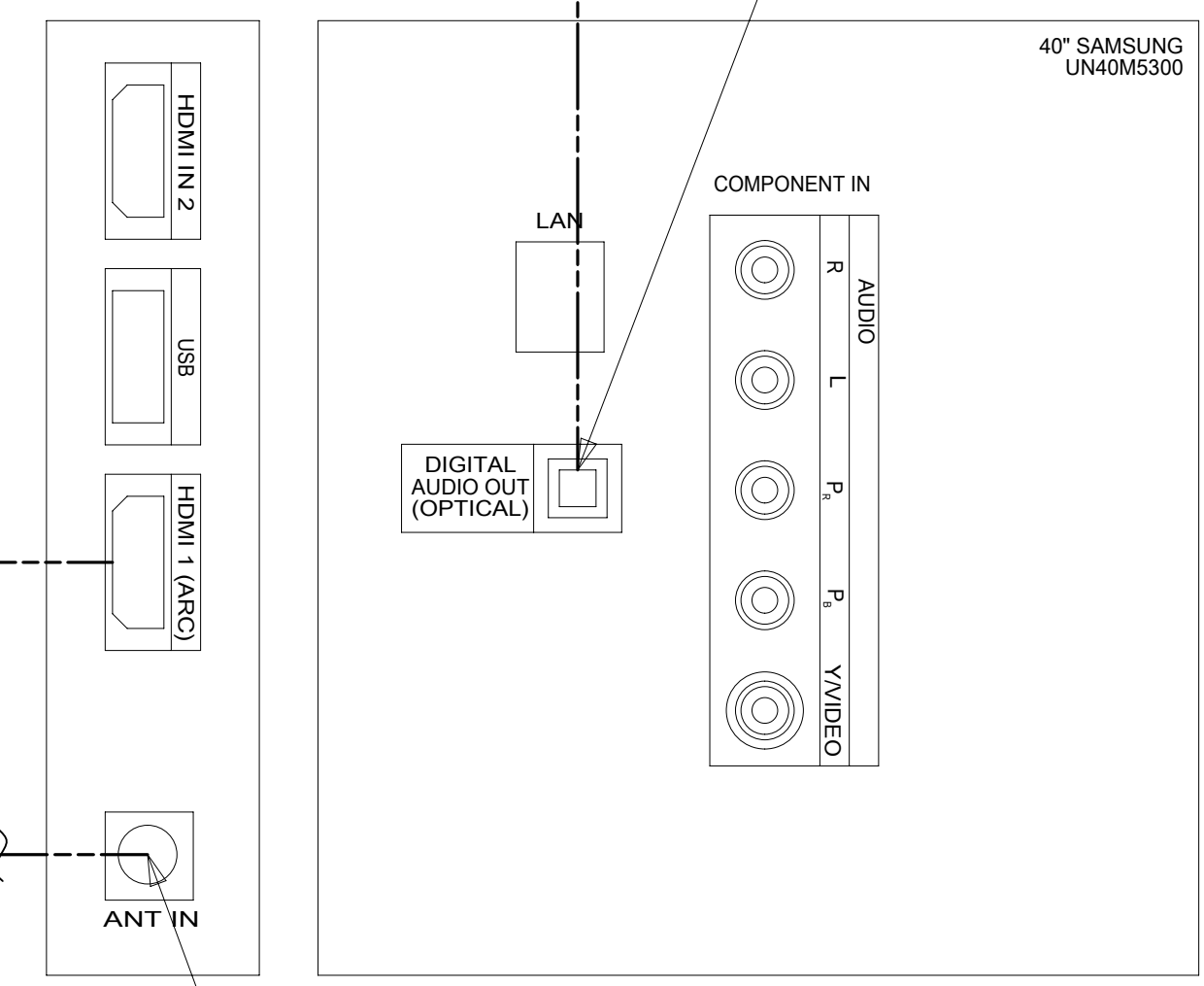
8 7 6 5 4 3 2 1



CONNECTOR-OPTICAL, RIGHT 187036-01-000

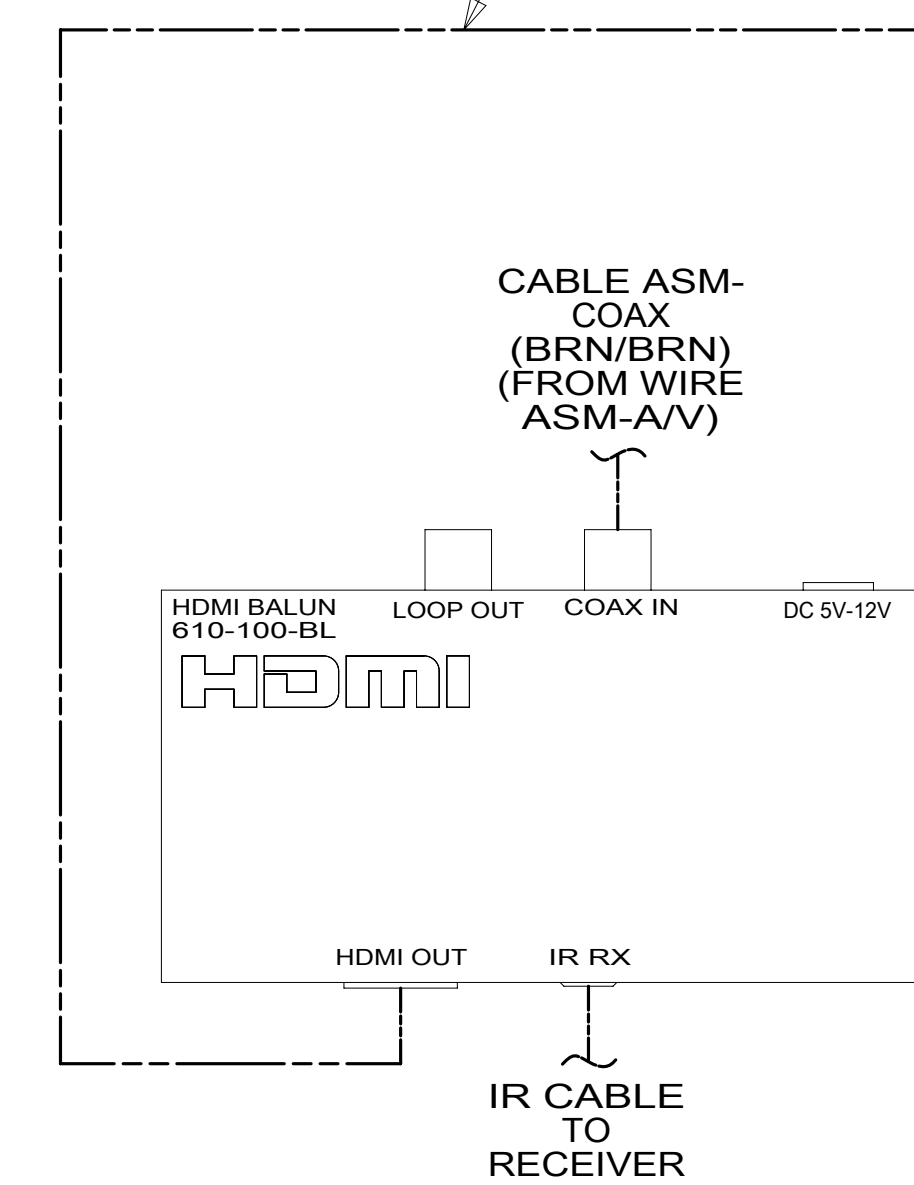
CABLE-OPTICAL 187116-01-000

CONNECTOR-OPTICAL, RIGHT 187036-01-000

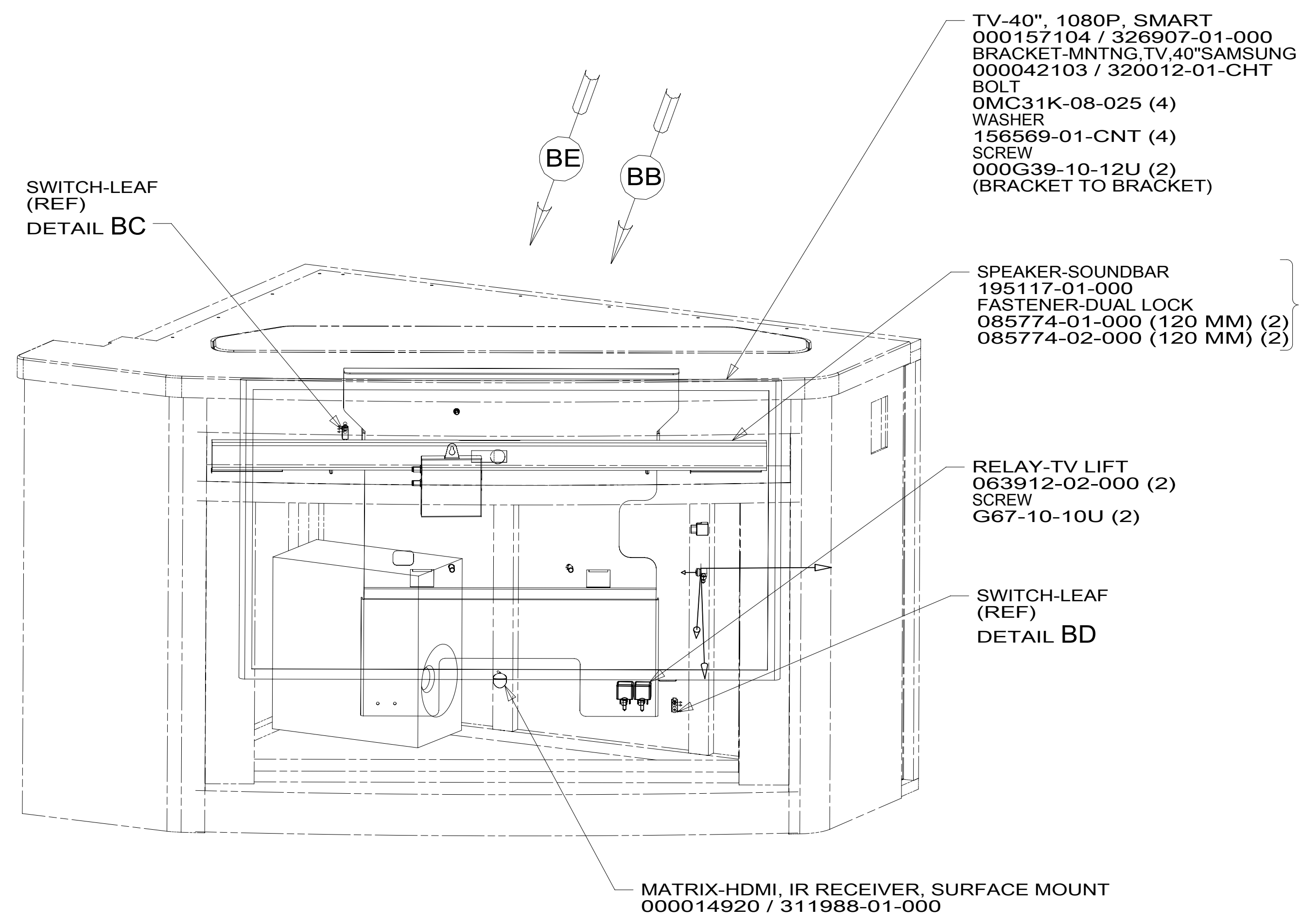


CONNECTOR-F, 90 RIGHT 176986-01-000

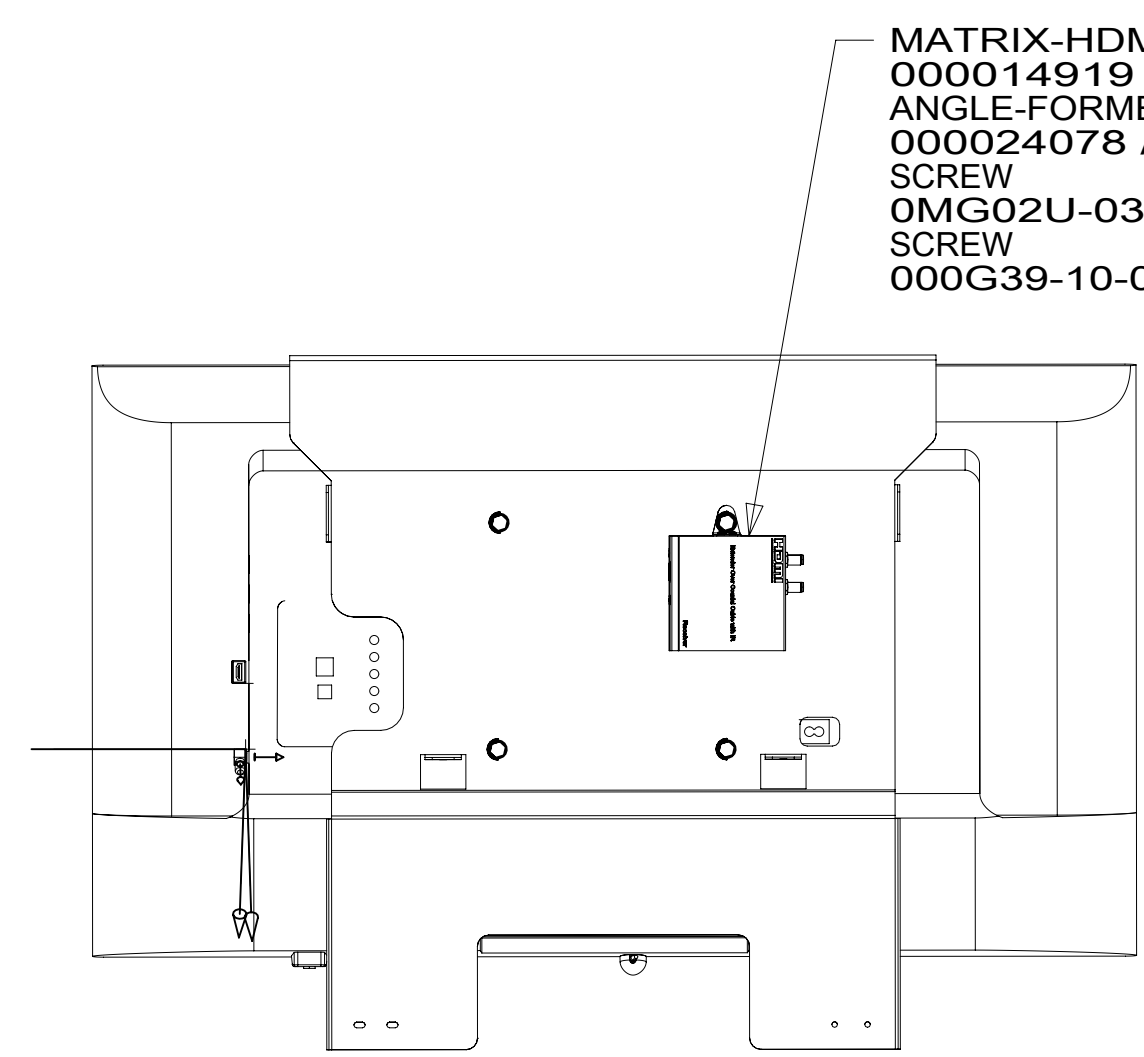
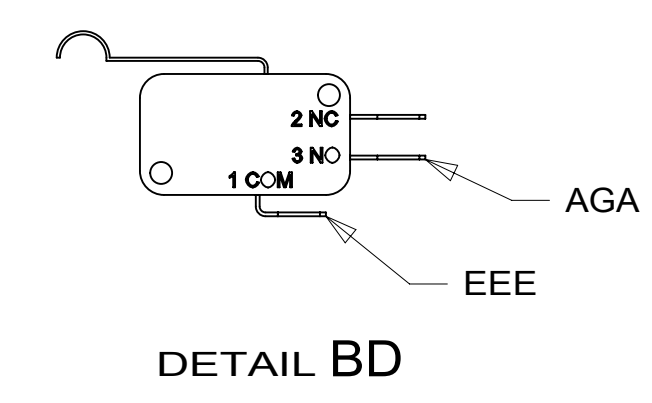
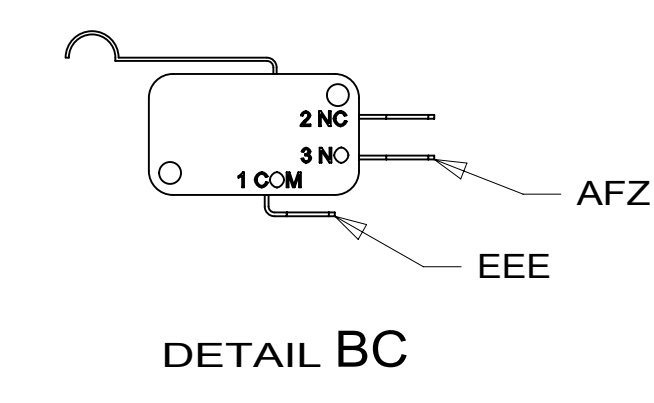
CABLE-HDMI 165308-04-000



VIEW BB 25N



VIEW BA



VIEW BE

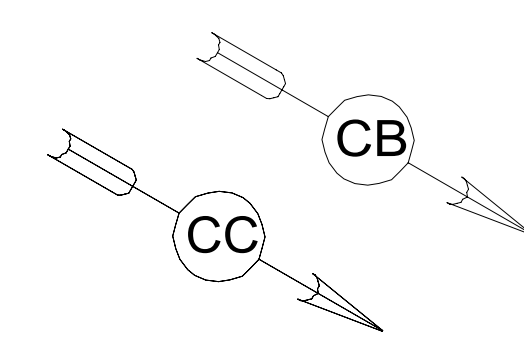
- 25N HOMETHEATER SOUNDBAR SYSTEM
- 265 CODES/STANDARDS-CSA/CMVSS
- 1B1 CODES/STANDARDS USA

FOR ELECTRICAL TORQUE SPECIFICATIONS SEE DWG NO. 128783-01-000

FOR ELECTRICAL CALLOUTS SEE DWG NO. 121339-01-000

DESCRIPTION: <b>WIRING INSTL-AV, COACH</b>		
SHEET: 2 OF 3	ITEM/PART NO: 000128914 / 32510301000	REV

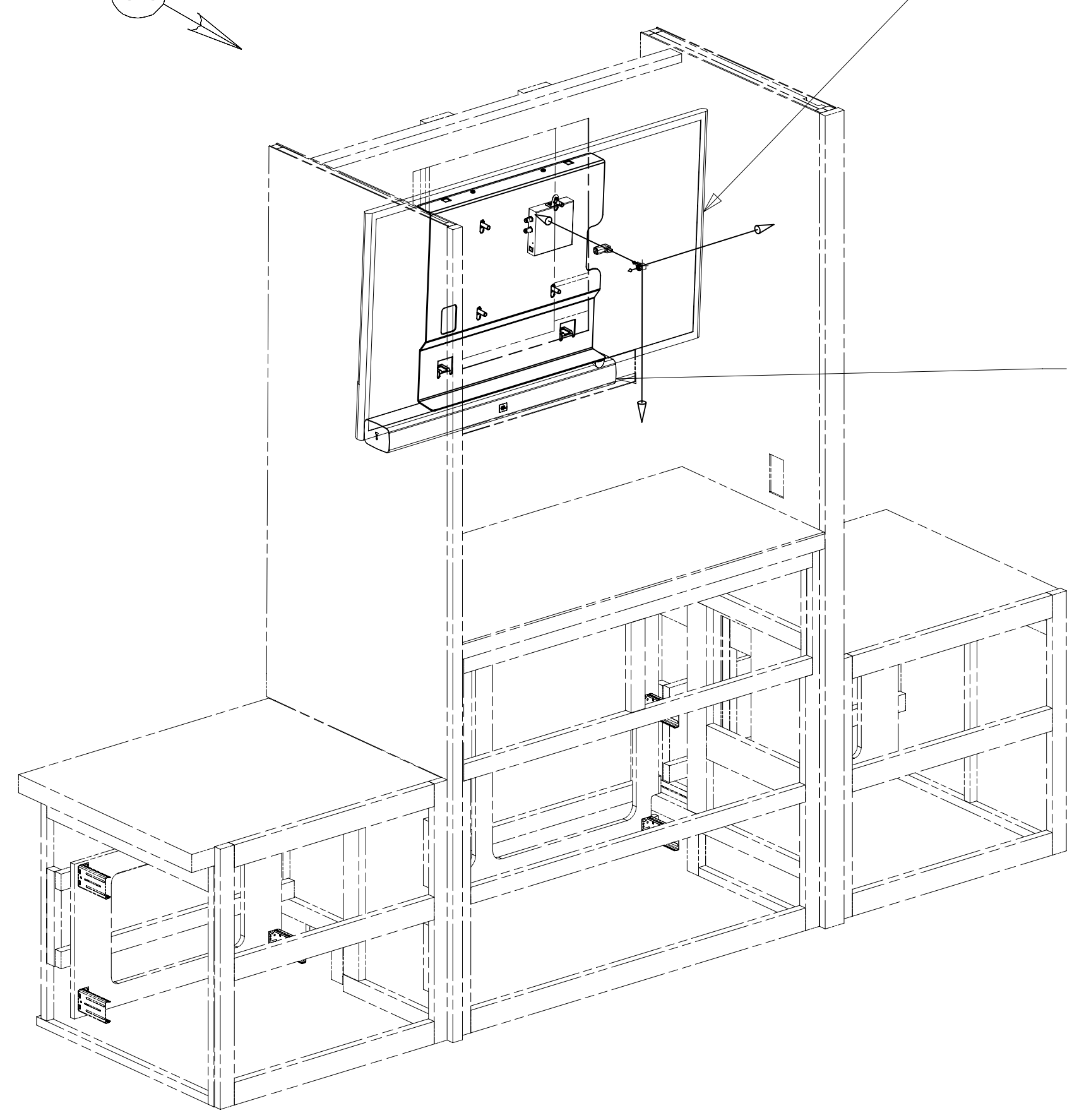
8 7 6 5 4 3 2 1 06-Jan-2022



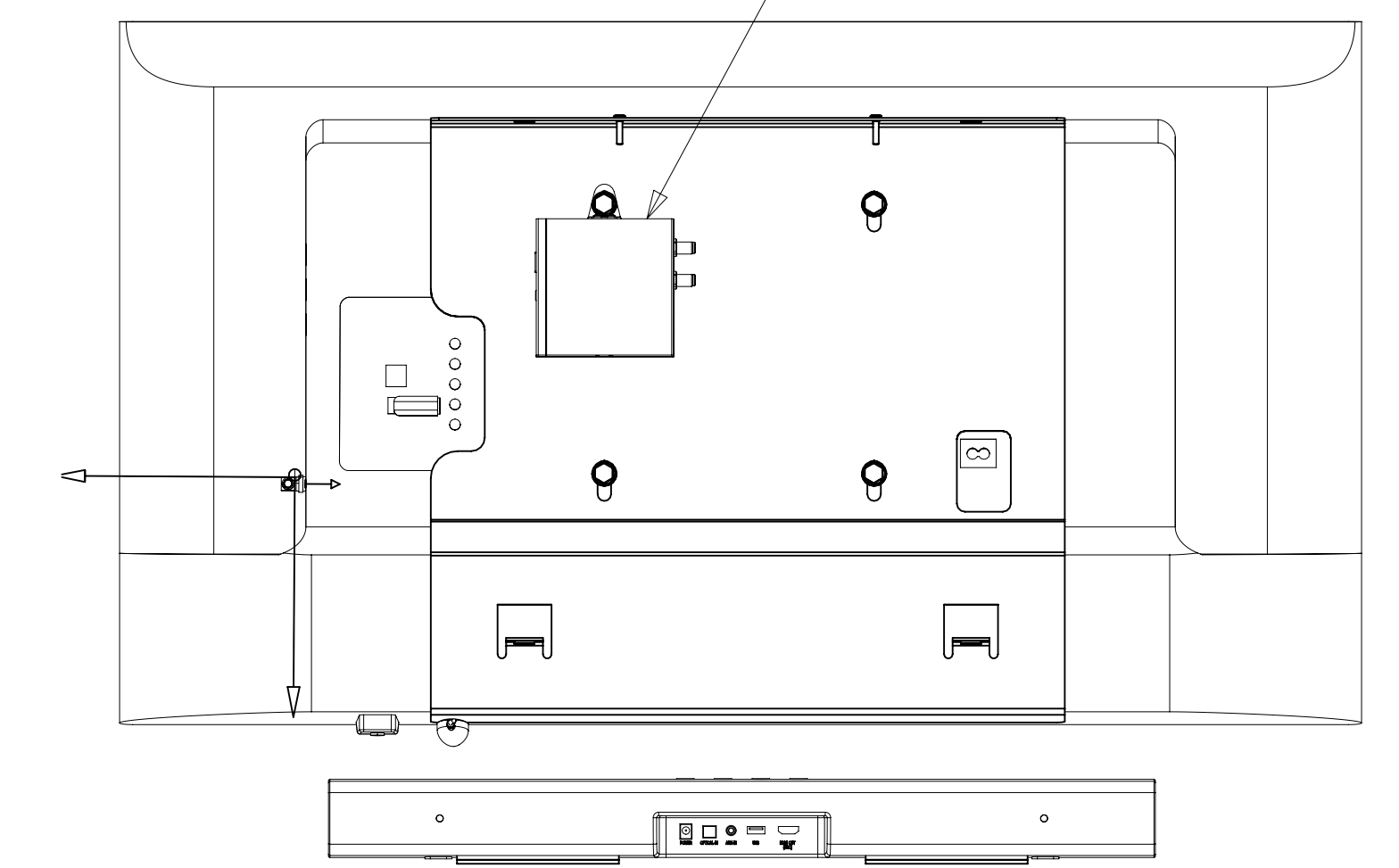
TV-40". 1080P, SMART  
 000157104 / 326907-01-000 (2)  
 BRACKET-MNTNG,TV,40"SAMSUNG  
 000036071 / 318447-01-CHT  
 BOLT  
 OMC31K-08-025 (4)  
 WASHER  
 156569-01-CHT (4)  
 MATRIX-HDMI, BALUN, COAX  
 000014919 / 311989-01-000  
 ANGLE-FORMED  
 000024078 / 314919-01-CHT  
 SCREW  
 OMG02U-03-008 (2)  
 TAPE  
 076322-23-000 (60 MM)  
 MATRIX-HDMI, IR RECEIVER, SURFACE MOUNT  
 000014920 / 311988-01-000  
 SCREW  
 000G39-10-12U (2)

SPEAKER-SOUNDBAR,NO SUB  
 000156637 / 326906-01-000  
 FASTENER-DUAL LOCK  
 085774-01-000 (120 MM)(2)  
 085774-02-000 (120 MM)(2)

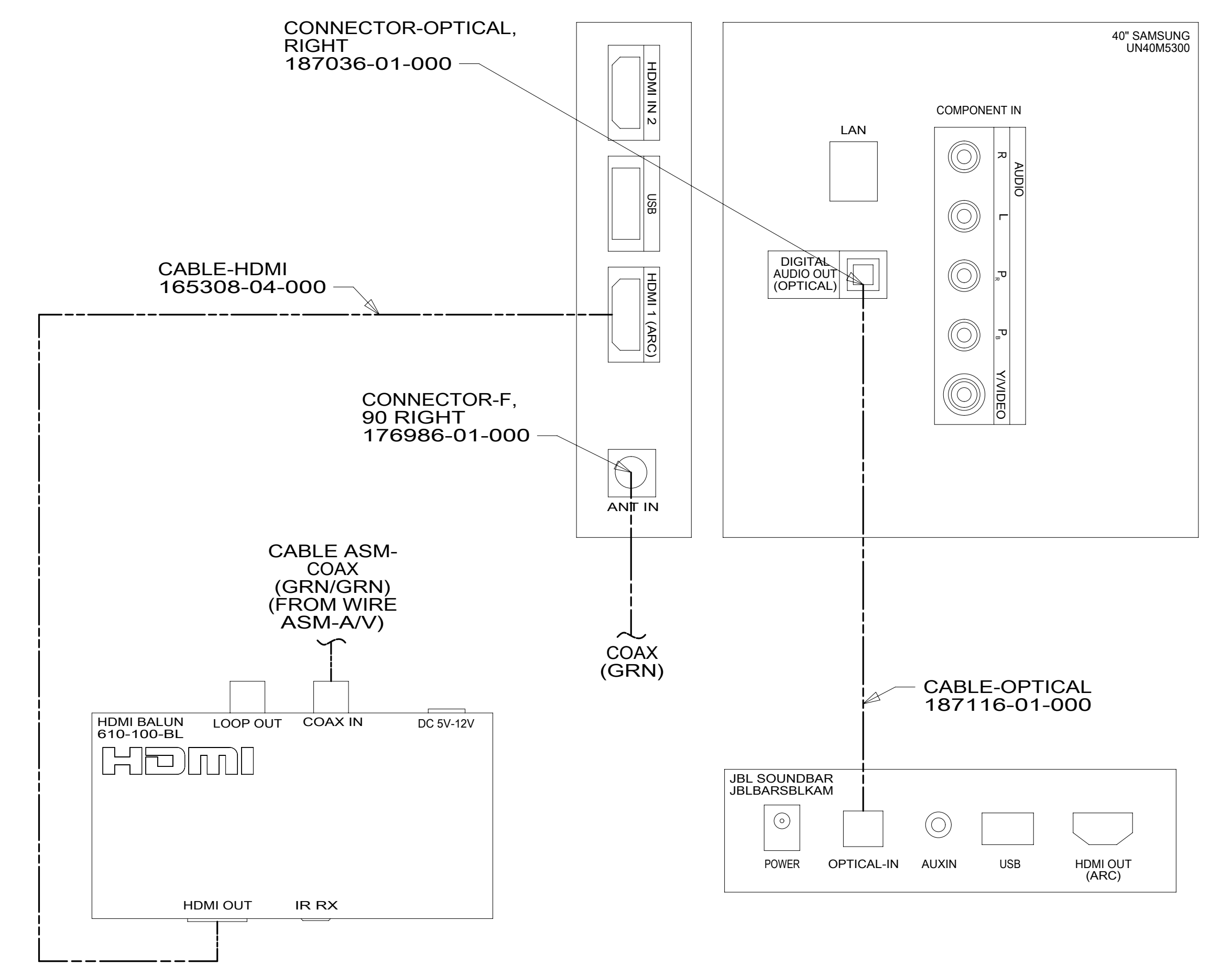
MATRIX-HDMI, BALUN, COAX  
 000014919 / 311989-01-000  
 ANGLE-FORMED  
 000024078 / 314919-01-CHT  
 SCREW  
 OMG02U-03-008 (2)



VIEW CA



VIEW CC



VIEW CB

- 25N HOMETHEATER SOUNDBAR SYSTEM
- 265 CODES/STANDARDS-CSA/CMVSS
- 1B1 CODES/STANDARDS USA

FOR ELECTRICAL TORQUE SPECIFICATIONS SEE DWG NO. 128783-01-000

FOR ELECTRICAL CALLOUTS SEE DWG NO. 121339-01-000

DESCRIPTION:	1B1 265 25N	
<b>WIRING INSTL-A/V, COACH</b>		
SHEET:	ITEM/PART NO:	REV
3 OF 3	000128914 / 32510301000	