

- NOTES:
- 6 SEE LOAD CENTER/ATS ASM FOR ADDITIONAL INFORMATION.
 - 5 TO ABOVE FLOOR.
 - 4 SEE GENERATOR INSTALLATION FOR ADDITIONAL INFORMATION.
 - 3. WIRES THAT REST ON WIRE TRAYS ARE TO BE TIED DOWN WITH WIRE TIE 8343-04-000.
 - 2. CLAMP TO FLOOR SUPPORT TUBES AS NECESSARY WITH CLAMP 10497-01-000.
 - 1. AT MINIMUM ALL WIRES TO BE SUPPORTED AND SECURED PER CODE REQUIREMENTS. USE CLAMP 10495 OR 10497 OR WIRE TIE 8343 OR 108046 AND SCREW G67-XX-XXX OR G56-XX-XXX AS APPROPRIATE FOR INSTALLATION.

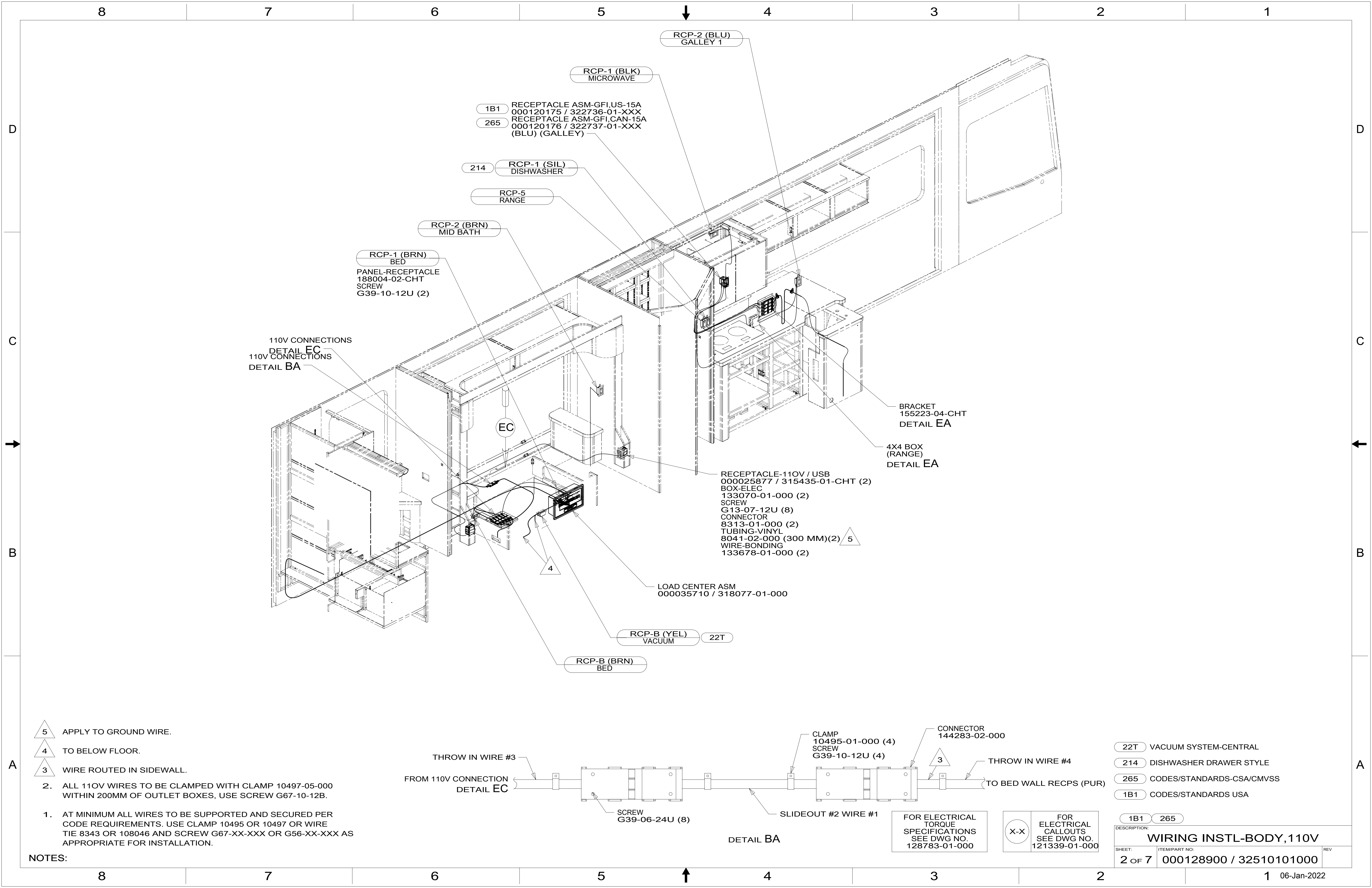
- 22T VACUUM SYSTEM-CENTRAL
- 11E REFRIGERATOR/FREEZER PORTABL
- 265 CODES/STANDARDS-CSA/CMVSS
- 1B1 CODES/STANDARDS USA

WINNEBAGO
COPYRIGHT 2016 WINNEBAGO INDUSTRIES, INC.

DSNR:	ALL DIMENSIONS ARE IN MILLIMETERS
DFFR:	MATERIAL:
UNSPECIFIED TOLERANCES:	WEIGHT: (LBS)
WHOLE DIM (X) : 3	FIRST USED:
ONE-PLACE (X.X) : 1.5	19 P40J
TWO-PLACE (X.XX) : 0.50	DESCRIPTION:
ANGLE : 1°	WIRING INSTL-BODY, 110V
REFER TO ES0018 FOR FASTENER TIGHTENING GUIDELINES	SHEET: 1 OF 7
	ITEM/PART NO: 000128900 / 32510101000
	REF: 1 06-Jan-2022

FOR ELECTRICAL TORQUE SPECIFICATIONS SEE DWG NO. 128783-01-000

FOR ELECTRICAL CALLOUTS SEE DWG NO. 121339-01-000



RCP-2 (BLU)
GALLEY 1

RCP-1 (BLK)
MICROWAVE

1B1 RECEPTACLE ASM-GFI,US-15A
000120175 / 322736-01-XXX
265 RECEPTACLE ASM-GFI,CAN-15A
000120176 / 322737-01-XXX
(BLU) (GALLEY)

214 RCP-1 (SIL)
DISHWASHER

RCP-5
RANGE

RCP-2 (BRN)
MID BATH

RCP-1 (BRN)
BED
PANEL-RECEPTACLE
188004-02-CHT
SCREW
G39-10-12U (2)

110V CONNECTIONS
DETAIL EC
110V CONNECTIONS
DETAIL BA

BRACKET
155223-04-CHT
DETAIL EA

4X4 BOX
(RANGE)
DETAIL EA

RECEPTACLE-110V / USB
000025877 / 315435-01-CHT (2)
BOX-ELEC
133070-01-000 (2)
SCREW
G13-07-12U (8)
CONNECTOR
8313-01-000 (2)
TUBING-VINYL
8041-02-000 (300 MM)(2) 5
WIRE-BONDING
133678-01-000 (2)

LOAD CENTER ASM
000035710 / 318077-01-000

RCP-B (YEL)
VACUUM 22T

RCP-B (BRN)
BED

5 APPLY TO GROUND WIRE.

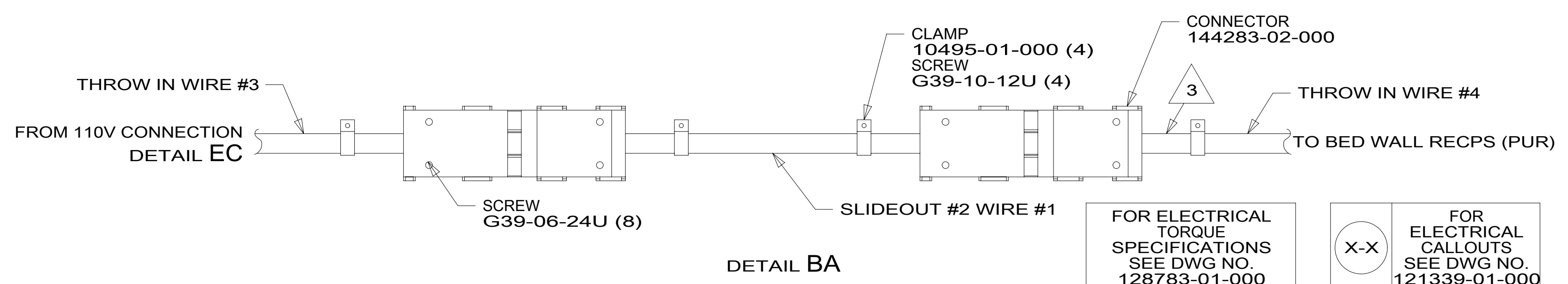
4 TO BELOW FLOOR.

3 WIRE ROUTED IN SIDEWALL.

2. ALL 110V WIRES TO BE CLAMPED WITH CLAMP 10497-05-000 WITHIN 200MM OF OUTLET BOXES, USE SCREW G67-10-12B.

1. AT MINIMUM ALL WIRES TO BE SUPPORTED AND SECURED PER CODE REQUIREMENTS. USE CLAMP 10495 OR 10497 OR WIRE TIE 8343 OR 108046 AND SCREW G67-XX-XXX OR G56-XX-XXX AS APPROPRIATE FOR INSTALLATION.

NOTES:

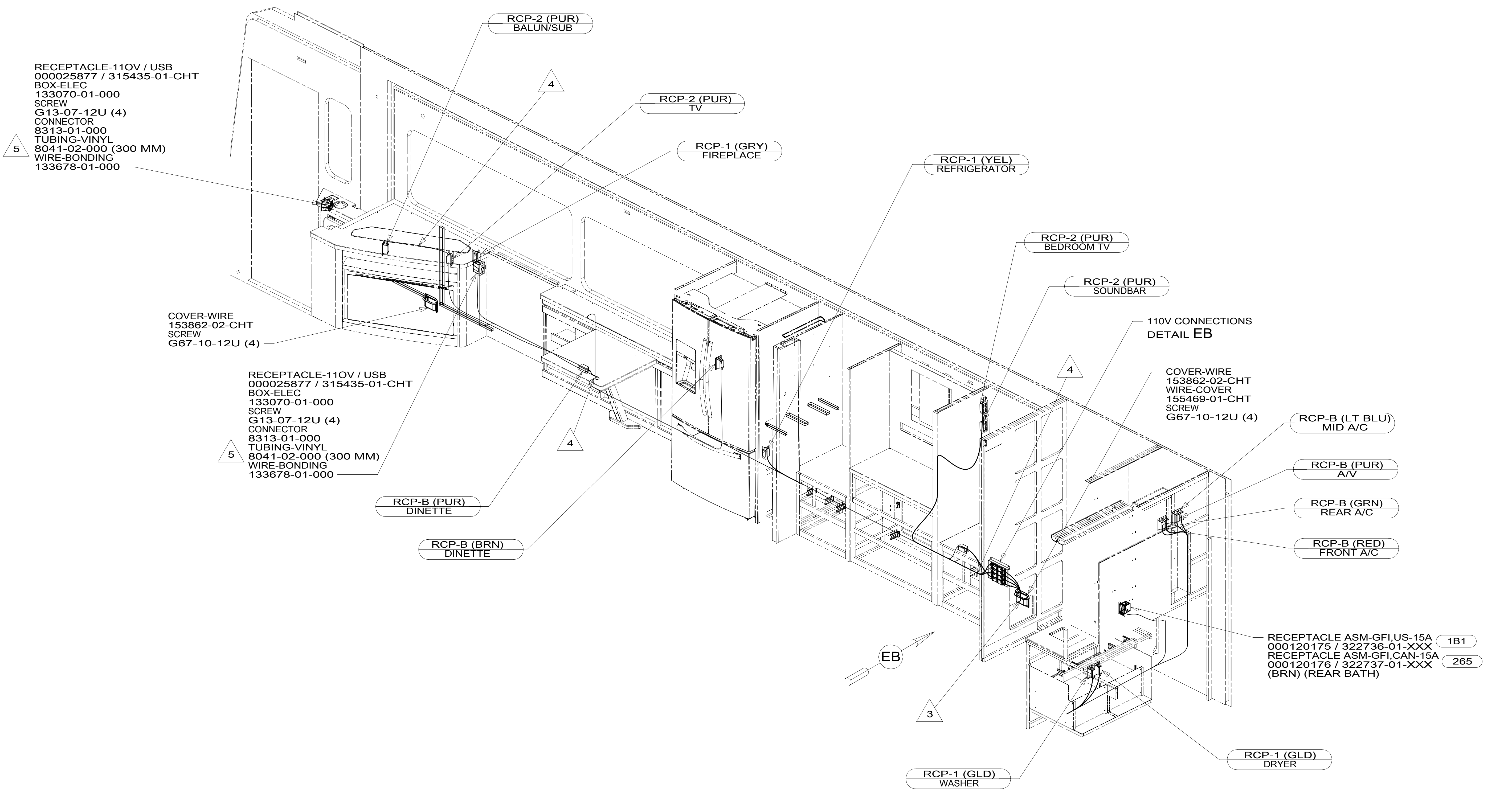


FOR ELECTRICAL
TORQUE
SPECIFICATIONS
SEE DWG NO.
128783-01-000

FOR ELECTRICAL
CALLOUTS
SEE DWG NO.
121339-01-000

- 22T VACUUM SYSTEM-CENTRAL
- 214 DISHWASHER DRAWER STYLE
- 265 CODES/STANDARDS-CSA/CMVSS
- 1B1 CODES/STANDARDS USA

DESCRIPTION:		1B1 265	
WIRING INSTL-BODY, 110V			
SHEET:	ITEM/PART NO.:	REV	
2 OF 7	000128900 / 32510101000		



RECEPTACLE-110V / USB
000025877 / 315435-01-CHT
BOX-ELEC
133070-01-000
SCREW
G13-07-12U (4)
CONNECTOR
8313-01-000
TUBING-VINYL
8041-02-000 (300 MM)
WIRE-BONDING
133678-01-000

COVER-WIRE
153862-02-CHT
SCREW
G67-10-12U (4)

RECEPTACLE-110V / USB
000025877 / 315435-01-CHT
BOX-ELEC
133070-01-000
SCREW
G13-07-12U (4)
CONNECTOR
8313-01-000
TUBING-VINYL
8041-02-000 (300 MM)
WIRE-BONDING
133678-01-000

COVER-WIRE
153862-02-CHT
WIRE-COVER
155469-01-CHT
SCREW
G67-10-12U (4)

RECEPTACLE ASM-GFI,US-15A
000120175 / 322736-01-XXX (1B1)
RECEPTACLE ASM-GFI,CAN-15A
000120176 / 322737-01-XXX (265)
(BRN) (REAR BATH)

- 5 APPLY TO GROUND WIRE.
- 4 WIRE ROUTED IN SIDEWALL.
- 3 TO BELOW FLOOR.

- NOTES:
2. ALL 110V WIRES TO BE CLAMPED WITH CLAMP 10497-05-000 WITHIN 200MM OF OUTLET BOXES, USE SCREW G67-10-12B.
 1. AT MINIMUM ALL WIRES TO BE SUPPORTED AND SECURED PER CODE REQUIREMENTS. USE CLAMP 10495 OR 10497 OR WIRE TIE 8343 OR 108046 AND SCREW G67-XX-XXX OR G56-XX-XXX AS APPROPRIATE FOR INSTALLATION.

265 CODES/STANDARDS-CSA/CMVSS
1B1 CODES/STANDARDS USA

FOR ELECTRICAL TORQUE SPECIFICATIONS SEE DWG NO. 128783-01-000

FOR ELECTRICAL CALLOUTS SEE DWG NO. 121339-01-000

DESCRIPTION: WIRING INSTL-BODY, 110V	
SHEET: 3 OF 7	ITEM/PART NO: 000128900 / 32510101000
REV	

8 7 6 5 4 3 2 1

D

D

C

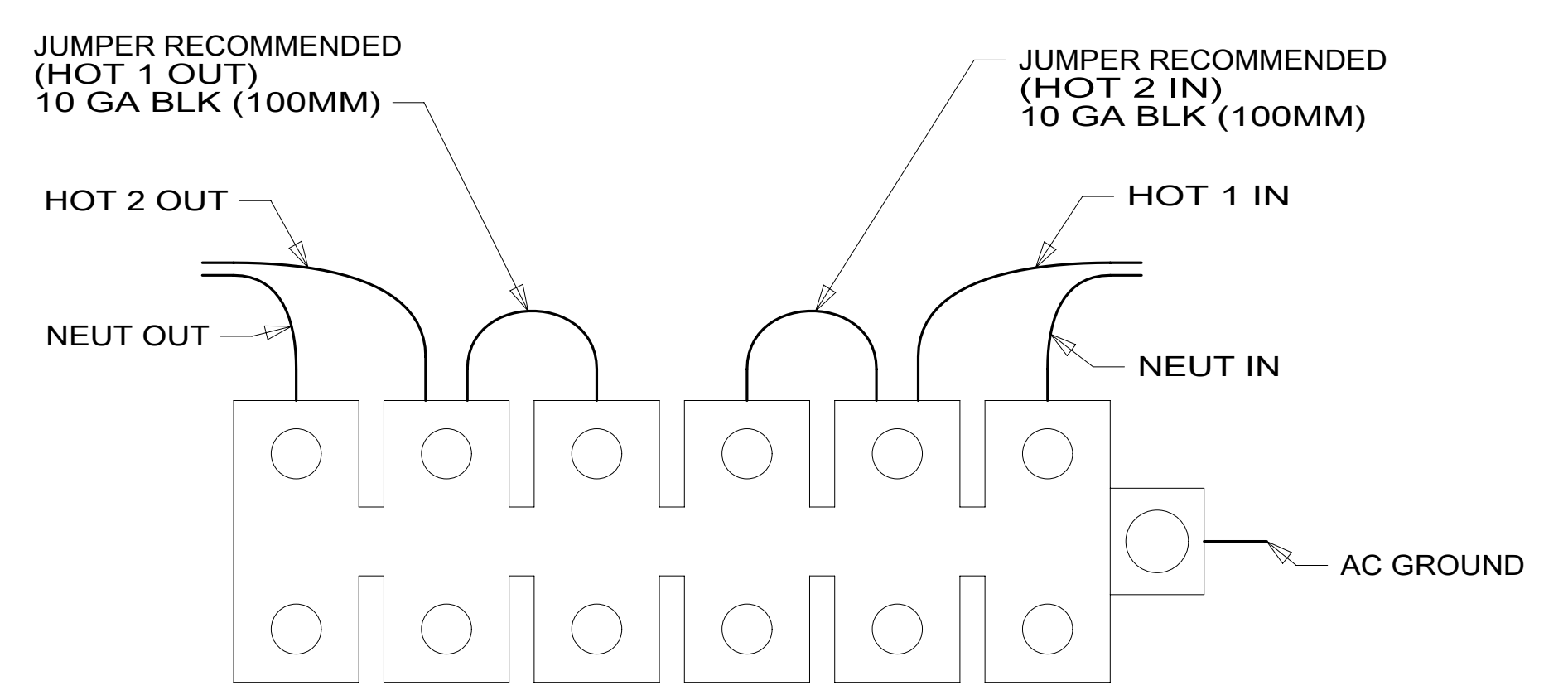
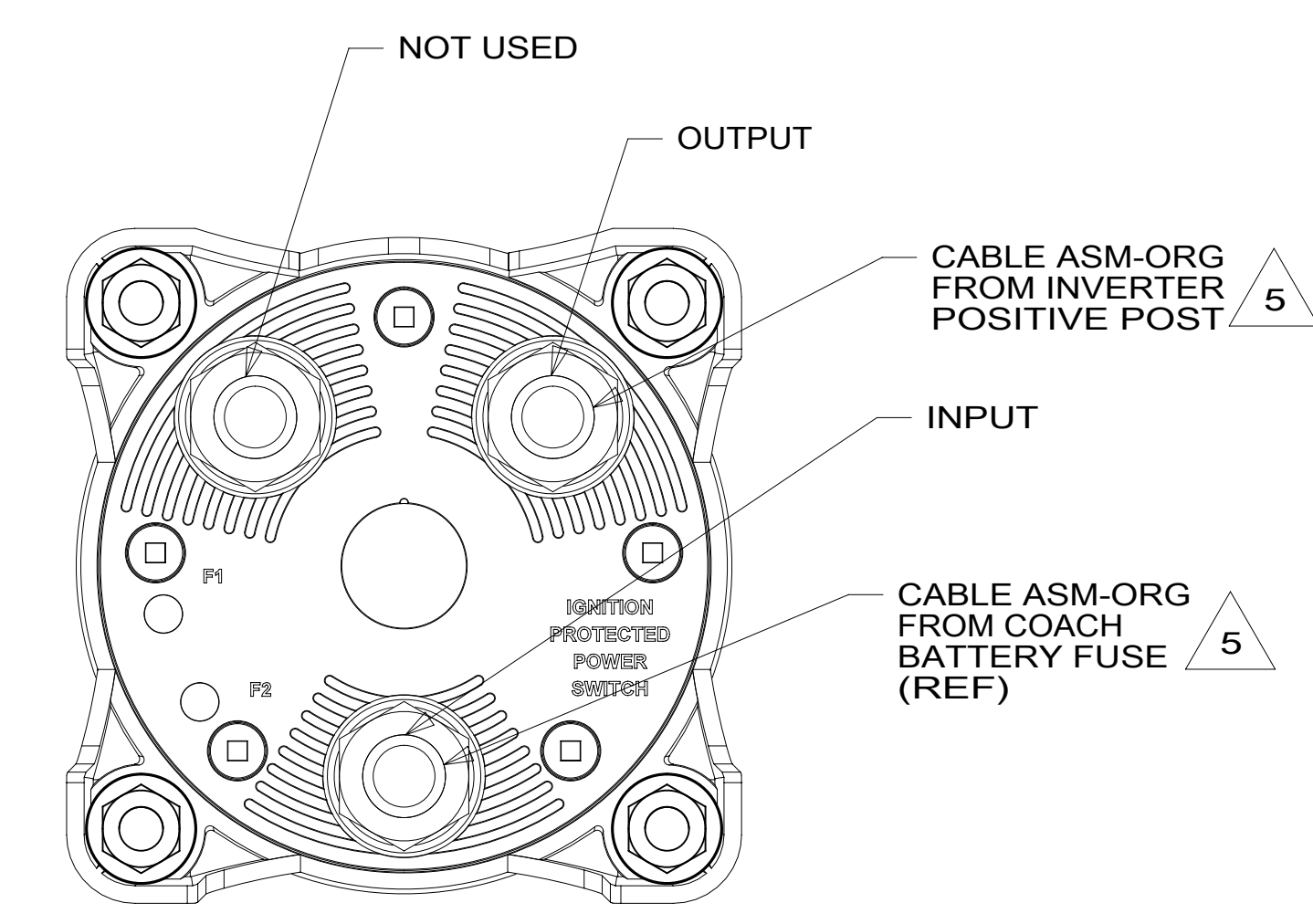
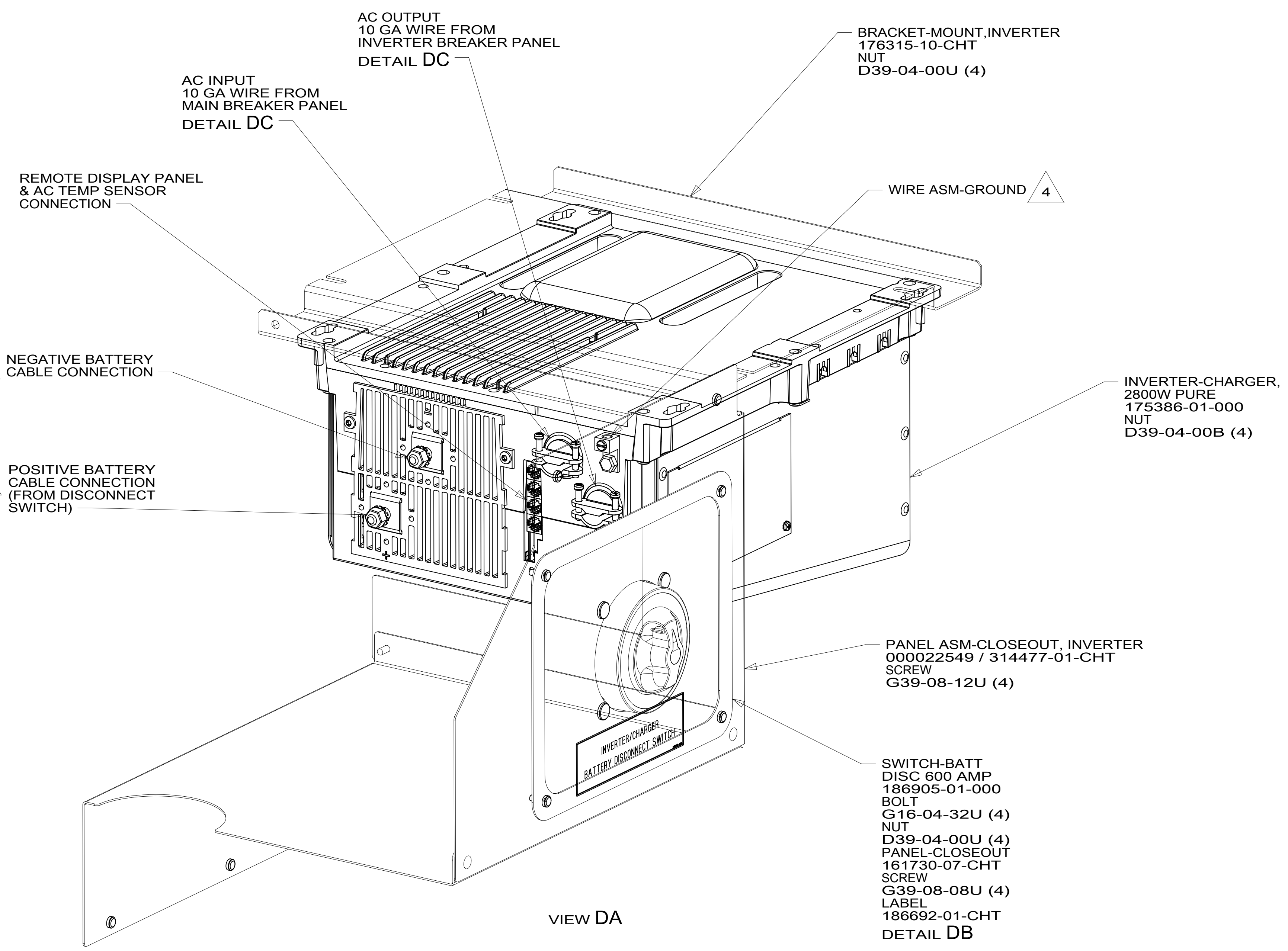
C

B

B

A

A



- 5 SEE WIRING INSTL-CHASSIS FOR ADDITIONAL INFORMATION.
- 4 SEE LOAD CENTER/ATS ASM FOR ADDITIONAL INFORMATION.
- 3 DO NOT USE POWER/AIR TOOL TO INSTALL NUT.
TORQUE TO 10-12 FT LBS.
- 2 SEE WIRING INSTL-CHASSIS FOR ADDITIONAL INFORMATION.

NOTES:
1. WIRE MUST BE ROUTED THROUGH CLAMPS AS SHOWN.

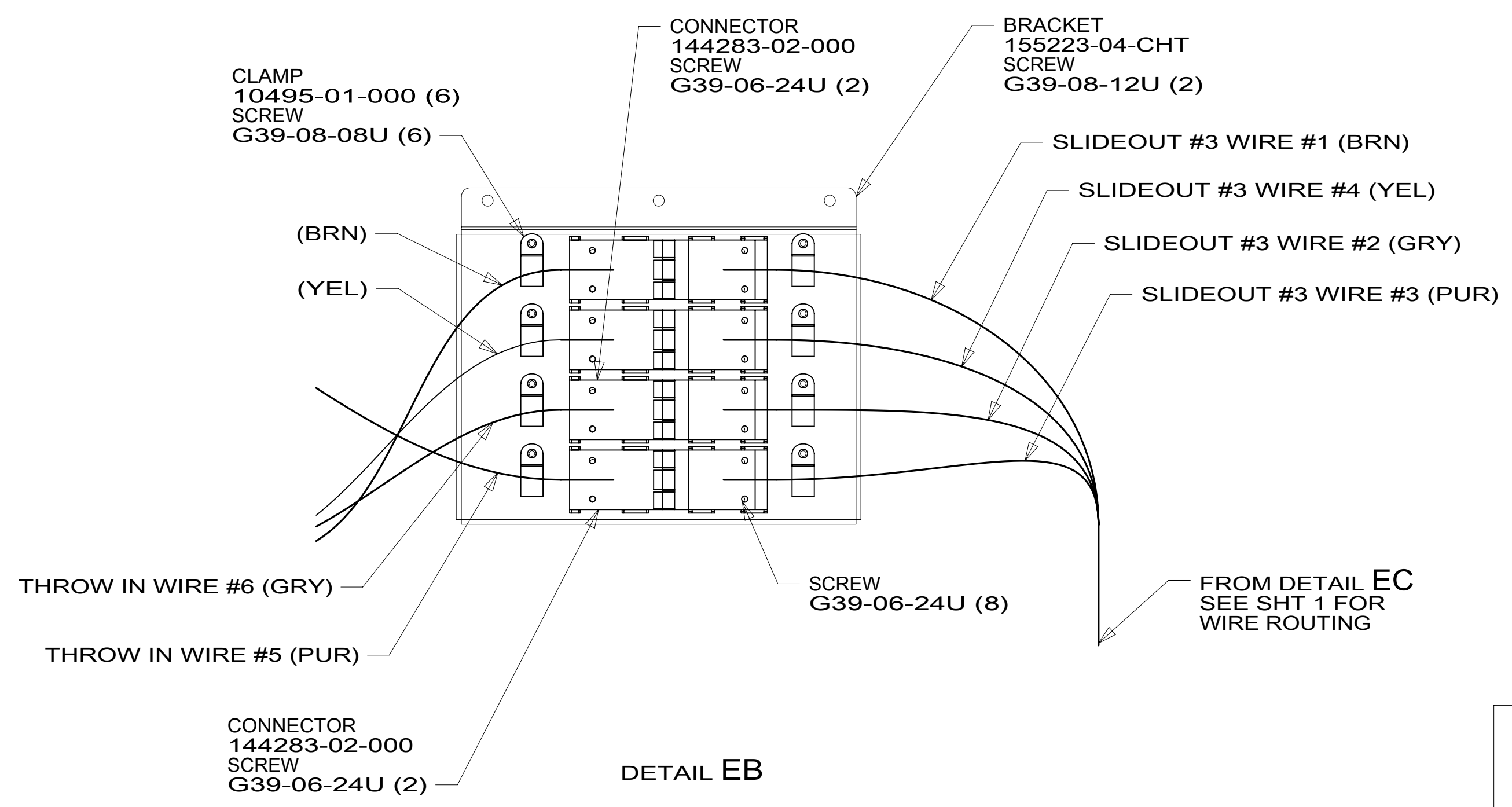
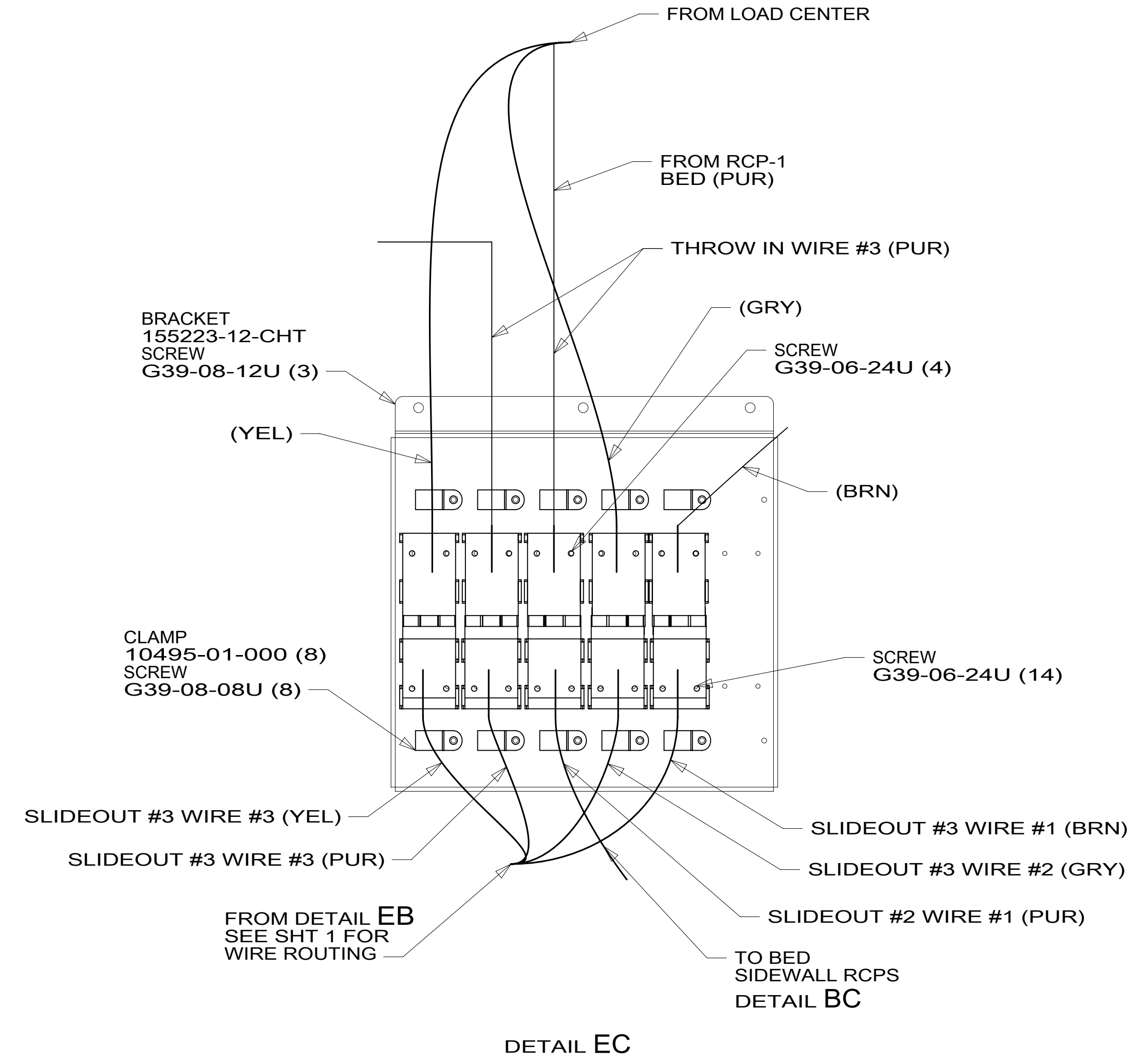
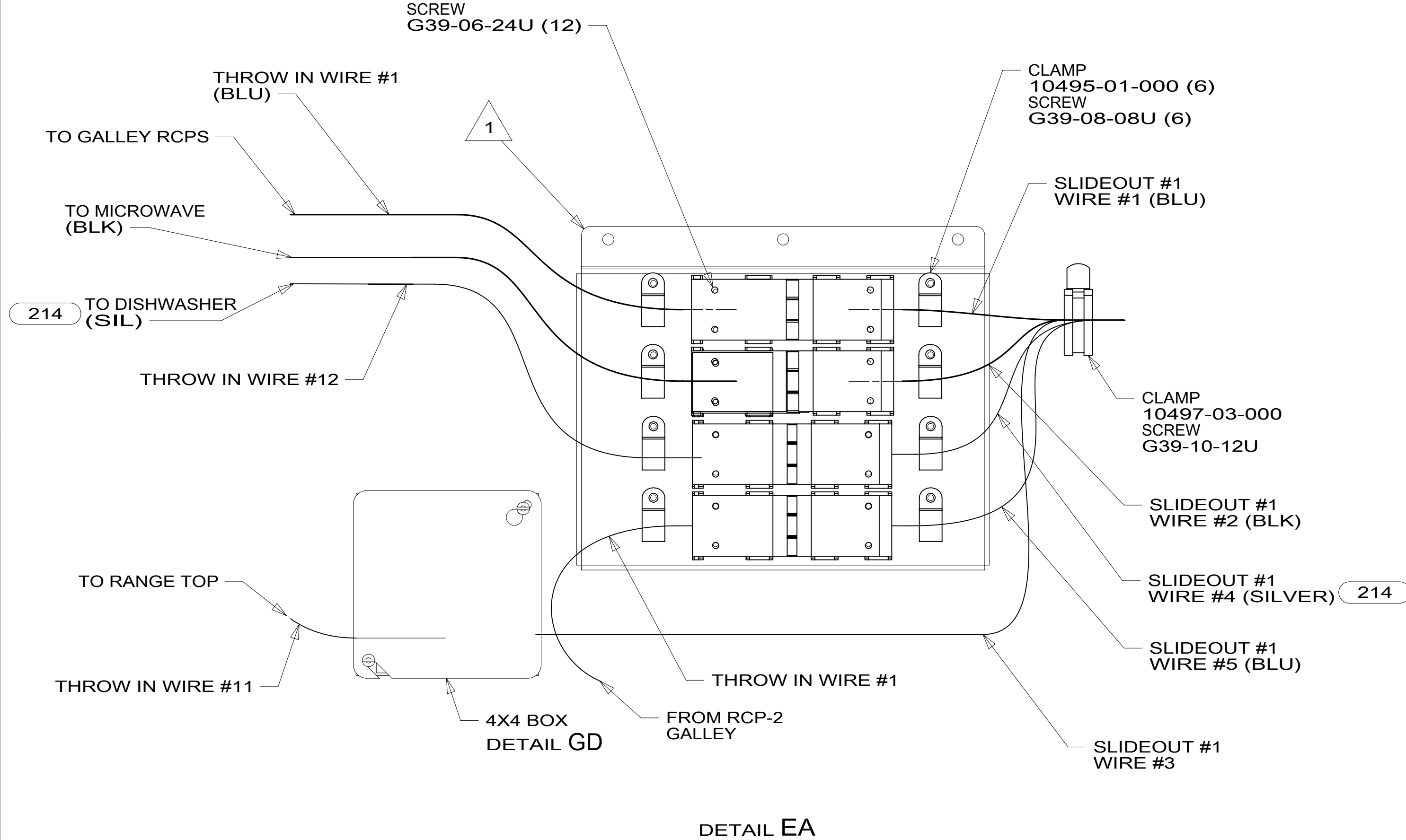
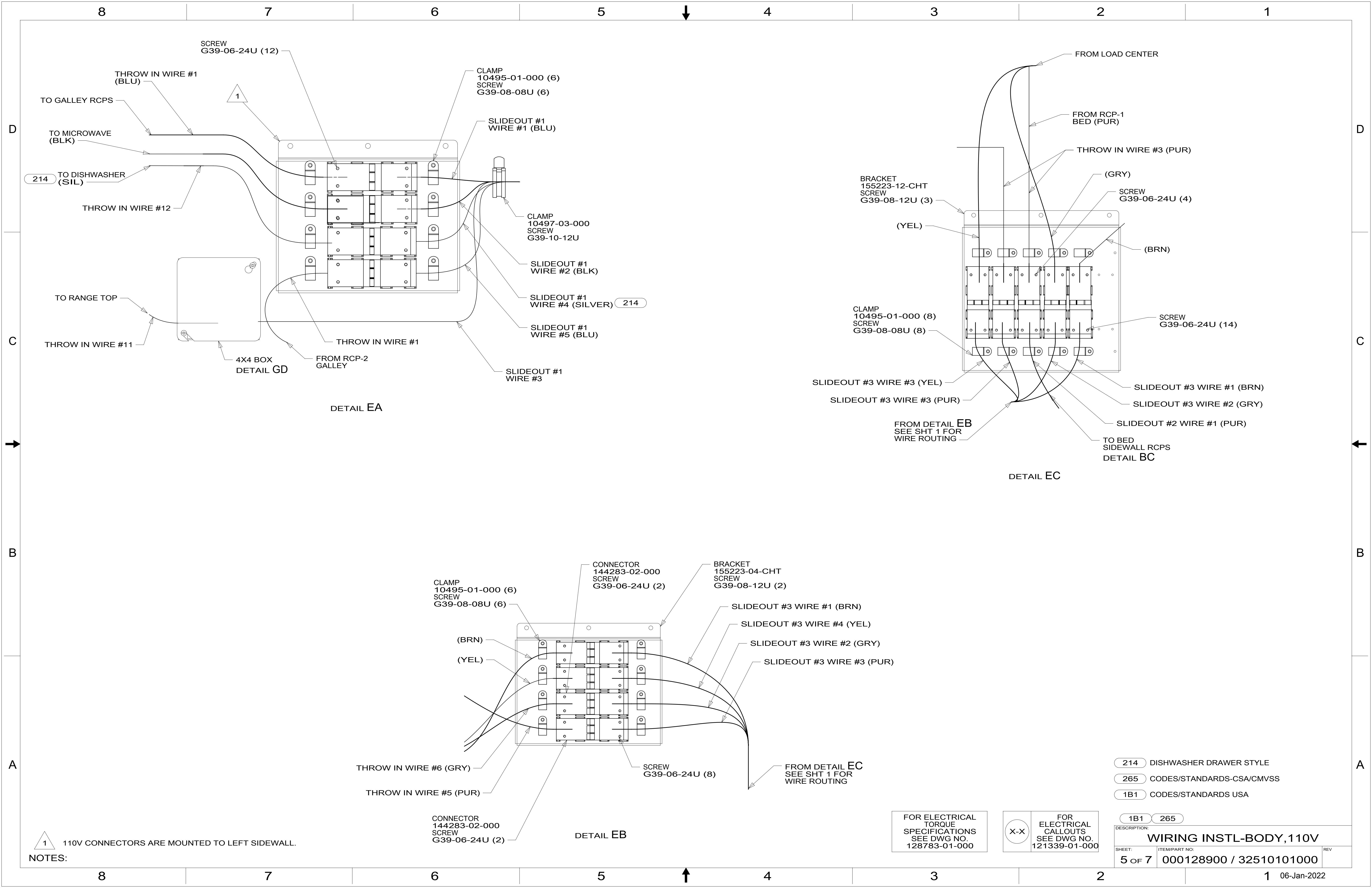
FOR ELECTRICAL
TORQUE
SPECIFICATIONS
SEE DWG NO.
128783-01-000

FOR
ELECTRICAL
CALLOUTS
SEE DWG NO.
121339-01-000

265 CODES/STANDARDS-CSA/CMVSS
1B1 CODES/STANDARDS USA

DESCRIPTION: WIRING INSTL-BODY, 110V	
SHEET: 4 OF 7	ITEM/PART NO: 000128900 / 32510101000
REV 06-Jan-2022	

8 7 6 5 4 3 2 1



NOTES:

1 110V CONNECTORS ARE MOUNTED TO LEFT SIDEWALL.

FOR ELECTRICAL TORQUE SPECIFICATIONS SEE DWG NO. 128783-01-000

FOR ELECTRICAL CALLOUTS SEE DWG NO. 121339-01-000

- 214 DISHWASHER DRAWER STYLE
- 265 CODES/STANDARDS-CSA/CMVSS
- 1B1 CODES/STANDARDS USA

DESCRIPTION:		
WIRING INSTL-BODY, 110V		
SHEET:	ITEM/PART NO.:	REV:
5 OF 7	000128900 / 32510101000	

RED	1B1	136135-07-090	1
	265	136136-07-090	
GRN	1B1	136135-08-090	1
	265	136136-08-090	
LT BLU	1B1	136135-21-090	1
	265	136136-21-090	
YEL	1B1	136131-05-015	1
	265	136134-05-015	
GLD	1B1	136131-10-070	1
	265	136134-10-070	
GLD-2	1B1	136131-20-070	1
	265	136134-20-070	
WHT	1B1	136135-09-070	1
	265	136136-09-070	
BLU	1B1	136131-02-100	1
	265	136134-02-100	
BRN	1B1	136131-03-170	1
	265	136134-03-170	
PUR	1B1	136131-04-095	1
	265	136134-04-095	
ORG	1B1	136131-16-030	1
	265	136134-16-030	
SIL	1B1	136131-11-067	1 214
	265	136134-11-067	1 214

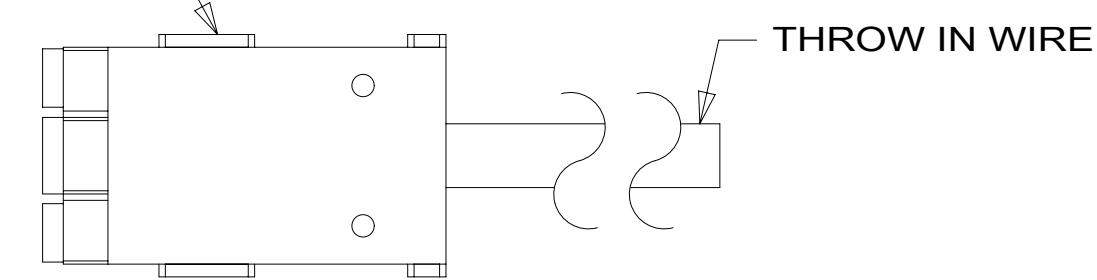
BLK	1B1	136131-06-067	1
	265	136134-06-067	1
GRY	1B1	136131-15-015	1
	265	136134-15-015	1
RANGE	1B1	136135-01-067	4
	265	136136-01-067	4
INVERTER CHARGER MAIN	1B1	136137-01-053	1
	265	136138-01-053	
INVERTER CHARGER SUB MAIN	1B1	136137-01-053	1
	265	136138-01-053	
CABLE ASM-MAIN,6 AWG 02125		176841-02-125	
MAIN GROUND		136145-01-020	
ATS GROUND		136145-01-020	
INVERTER GROUND		136145-04-040	
GENERATOR CABLE ASM		174031-03-120	

THROW IN WIRE #1	1B1	136131-02-070	2
	265	136134-02-070	2
THROW IN WIRE #2	1B1	136131-02-038	1
	265	136134-02-038	1
THROW IN WIRE #3	1B1	136131-04-012	3
	265	136134-04-012	3
THROW IN WIRE #4	1B1	136131-04-070	1
	265	136134-04-070	1
THROW IN WIRE #5	1B1	136131-04-034	1
	265	136134-04-034	1
THROW IN WIRE #6	1B1	136131-04-080	1
	265	136134-04-080	
THROW IN WIRE #8	1B1	136131-05-025	1
	265	136134-05-025	
THROW IN WIRE #9	1B1	136131-03-039	1
	265	136134-03-039	
THROW IN WIRE #10	1B1	136131-04-020	1
	265	136134-04-020	
THROW IN WIRE #11	1B1	136135-01-015	4
	265	136136-01-015	4

THROW IN WIRE #12	1B1	136131-11-015	1 214
	265	136134-11-015	1 214
THROW IN WIRE #13	1B1	136131-15-072	1
	265	136134-15-072	1
THROW IN WIRE #14	1B1	136131-06-030	1
	265	136134-06-030	1
THROW IN WIRE #15	1B1	136131-05-060	1
	265	136134-05-060	

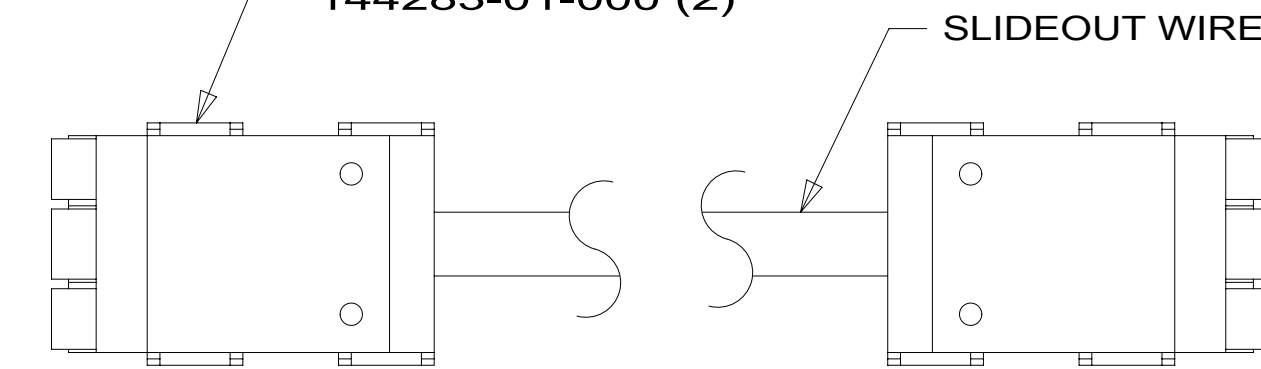
SLIDEOUT #1 WIRE #1	136151-02-040	2
SLIDEOUT #1 WIRE #2	136151-06-040	2
SLIDEOUT #1 WIRE #3	136152-014-040	4
SLIDEOUT #1 WIRE #4	136151-11-040	2 214
SLIDEOUT #1 WIRE #5	136151-02-040	2
SLIDEOUT #2 WIRE #1	136151-04-012	2
SLIDEOUT #3 WIRE #1	136151-03-055	2
SLIDEOUT #3 WIRE #2	136151-15-055	2
SLIDEOUT #3 WIRE #3	136151-04-055	2
SLIDEOUT #3 WIRE #4	136151-05-055	2

CONNECTOR-WIRE,NM,CLEAR
144283-02-000



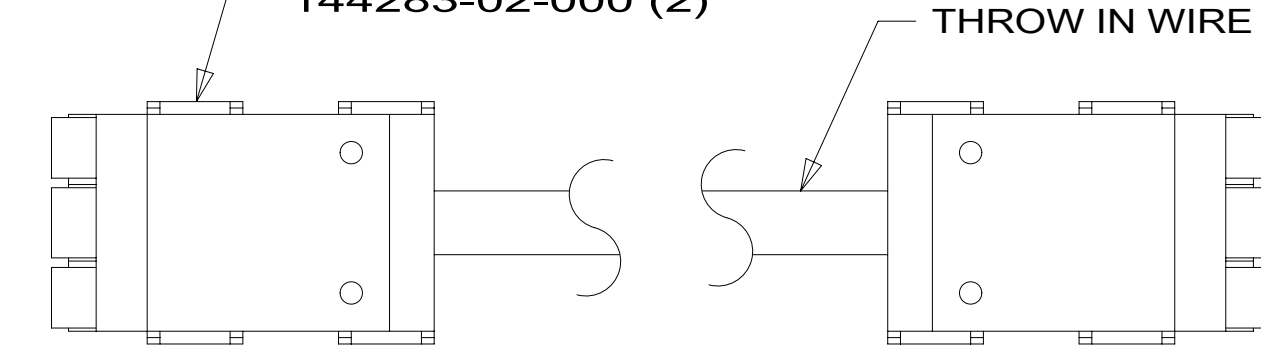
DETAIL GA

CONNECTOR-WIRE,SOW,BLUE
144283-01-000 (2)



DETAIL GB

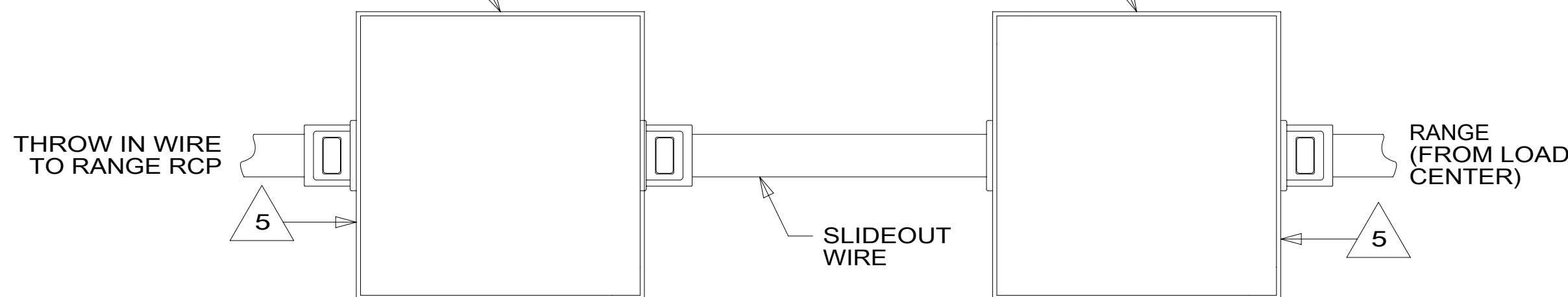
CONNECTOR-WIRE,NM,CLEAR
144283-02-000 (2)



DETAIL GC

BOX
8289-01-000
SCREW
G11-08-12U (2)
COVER
8294-01-000
CONNECTOR
8356-01-000
8355-01-000
WIRE ASM-GROUND
133678-01-000
CONNECTOR
8314-01-000 (3)
SCREW-GROUND GREEN
103291-01-000

BOX
8289-01-000
SCREW
G11-08-12U (2)
COVER
8294-01-000
CONNECTOR
8356-01-000
8355-01-000
WIRE ASM-GROUND
133678-01-000
CONNECTOR
8314-01-000 (3)
SCREW-GROUND GREEN
103291-01-000



DETAIL GD

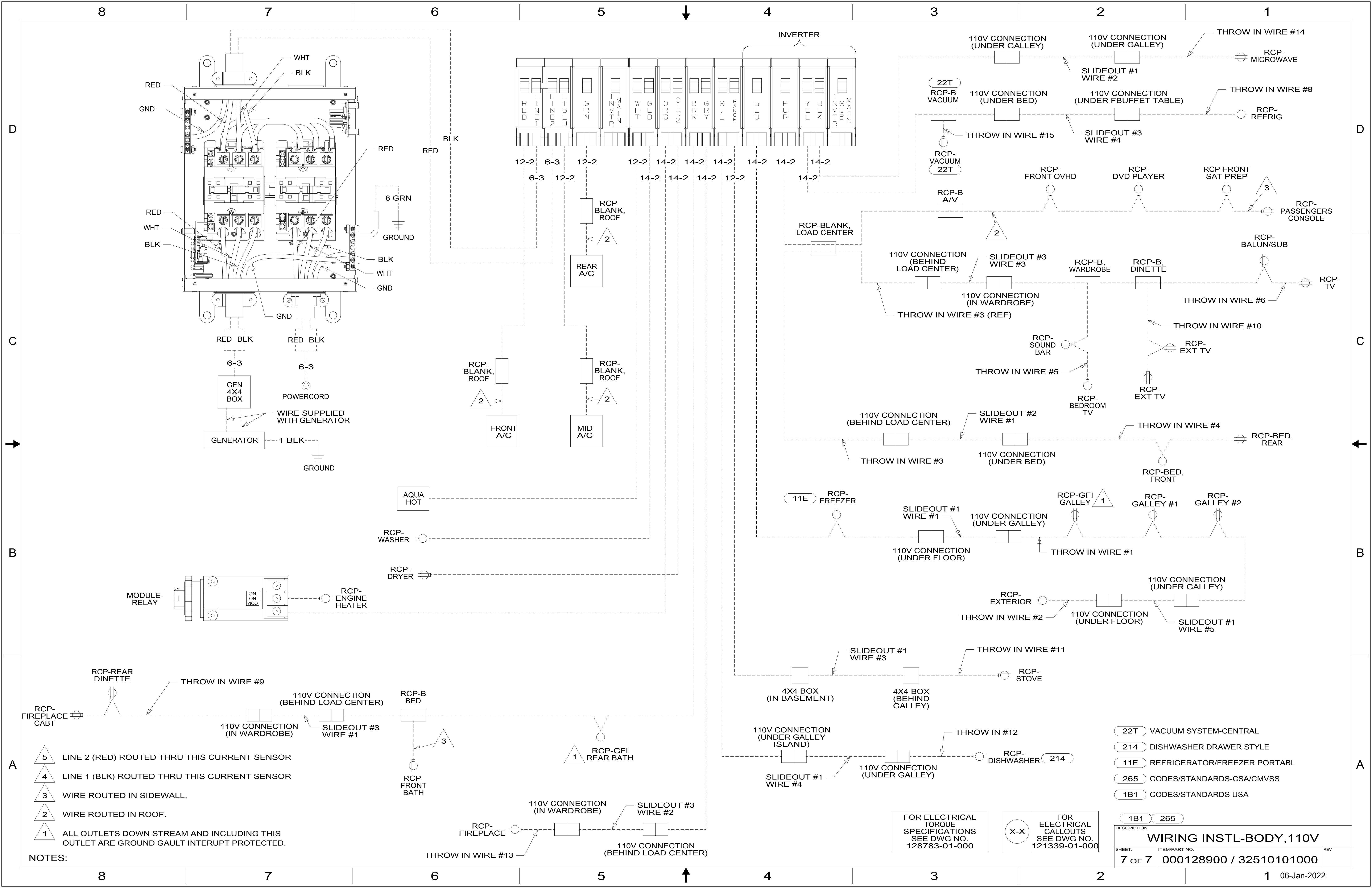
- NOTES:
- 5 CONNECT WIRES, WHT TO WHT, BLK TO BLK, GROUNDS TO GROUNDS, KEEPING CIRCUITS SEPERATED.
 - 4 SEE DETAIL GD FOR CONNECTOR INSTALLATION.
 - 3 SEE DETAIL GC FOR CONNECTOR INSTALLATION.
 - 2 SEE DETAIL GB FOR CONNECTOR INSTALLATION.
 - 1 SEE DETAIL GA FOR CONNECTOR INSTALLATION.

- 214 DISHWASHER DRAWER STYLE
- 11E REFRIGERATOR/FREEZER PORTABL
- 22A VACUUM SYS-CENTRAL-WITHOUT
- 22T VACUUM SYSTEM-CENTRAL
- 265 CODES/STANDARDS-CSA/CMVSS
- 1B1 CODES/STANDARDS USA

FOR ELECTRICAL TORQUE SPECIFICATIONS SEE DWG NO. 128783-01-000

FOR ELECTRICAL CALLOUTS SEE DWG NO. 121339-01-000

DESCRIPTION:	1B1 265	
WIRING INSTL-BODY, 110V		
SHEET:	ITEM/PART NO.:	REV:
6 OF 7	000128900 / 32510101000	



D

C

B

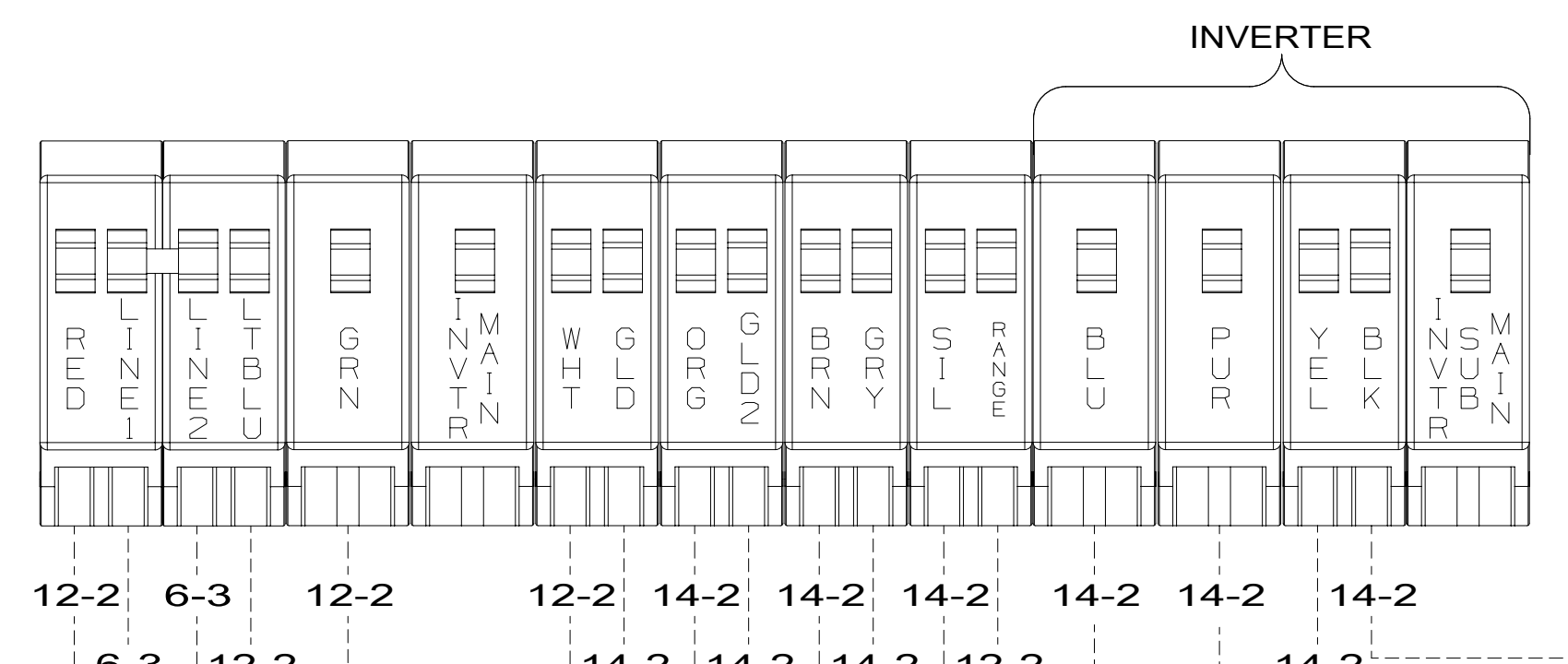
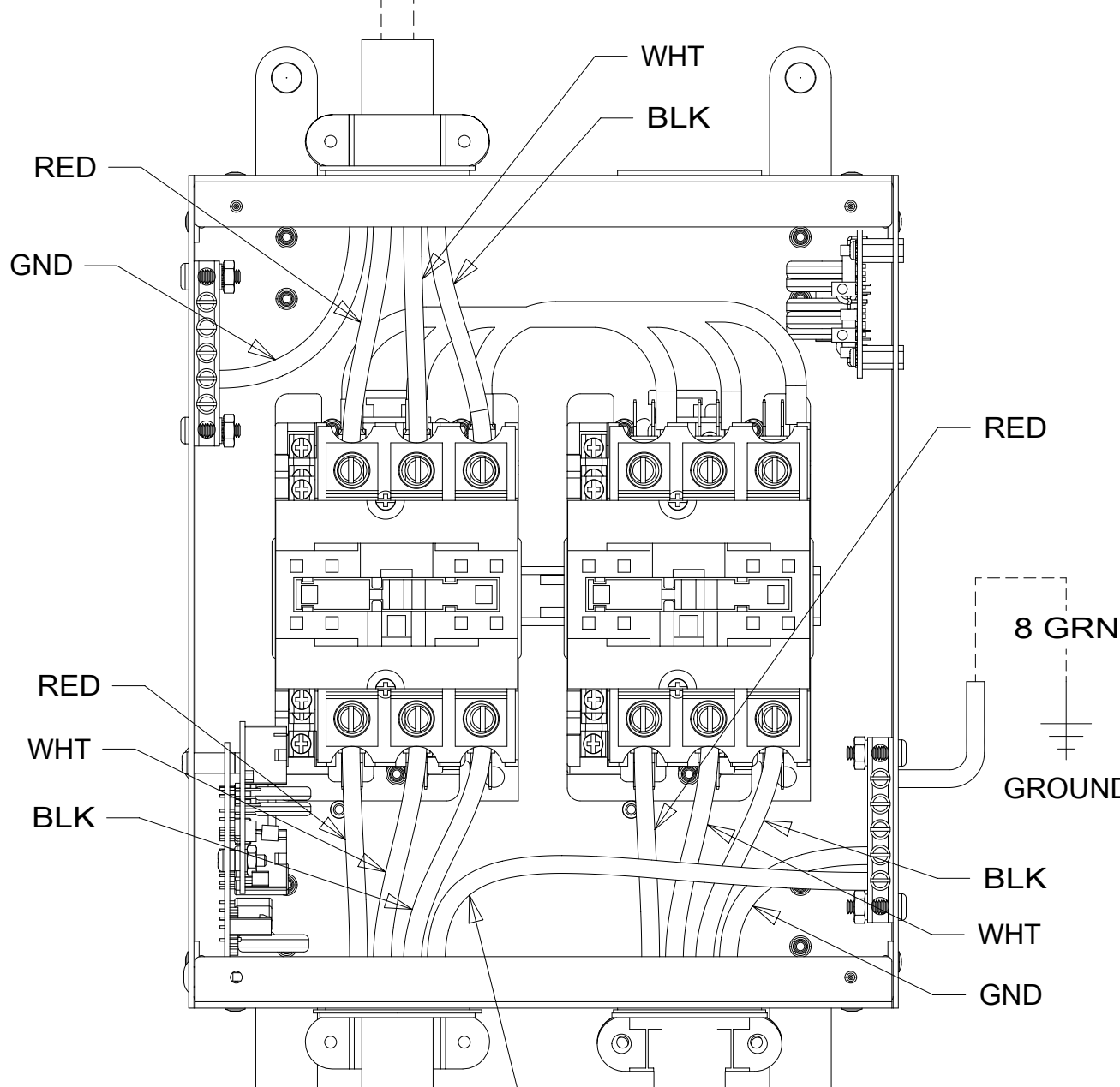
A

D

C

B

A



- NOTES:
- 5 LINE 2 (RED) ROUTED THRU THIS CURRENT SENSOR
 - 4 LINE 1 (BLK) ROUTED THRU THIS CURRENT SENSOR
 - 3 WIRE ROUTED IN SIDEWALL.
 - 2 WIRE ROUTED IN ROOF.
 - 1 ALL OUTLETS DOWN STREAM AND INCLUDING THIS OUTLET ARE GROUND GAULT INTERRUPT PROTECTED.

FOR ELECTRICAL TORQUE SPECIFICATIONS SEE DWG NO. 128783-01-000

FOR ELECTRICAL CALLOUTS SEE DWG NO. 121339-01-000

- 22T VACUUM SYSTEM-CENTRAL
- 214 DISHWASHER DRAWER STYLE
- 11E REFRIGERATOR/FREEZER PORTABLE
- 265 CODES/STANDARDS-CSA/CMVSS
- 1B1 CODES/STANDARDS USA

DESCRIPTION: WIRING INSTL-BODY, 110V		
SHEET: 7 OF 7	ITEM/PART NO: 000128900 / 32510101000	REV
06-Jan-2022		