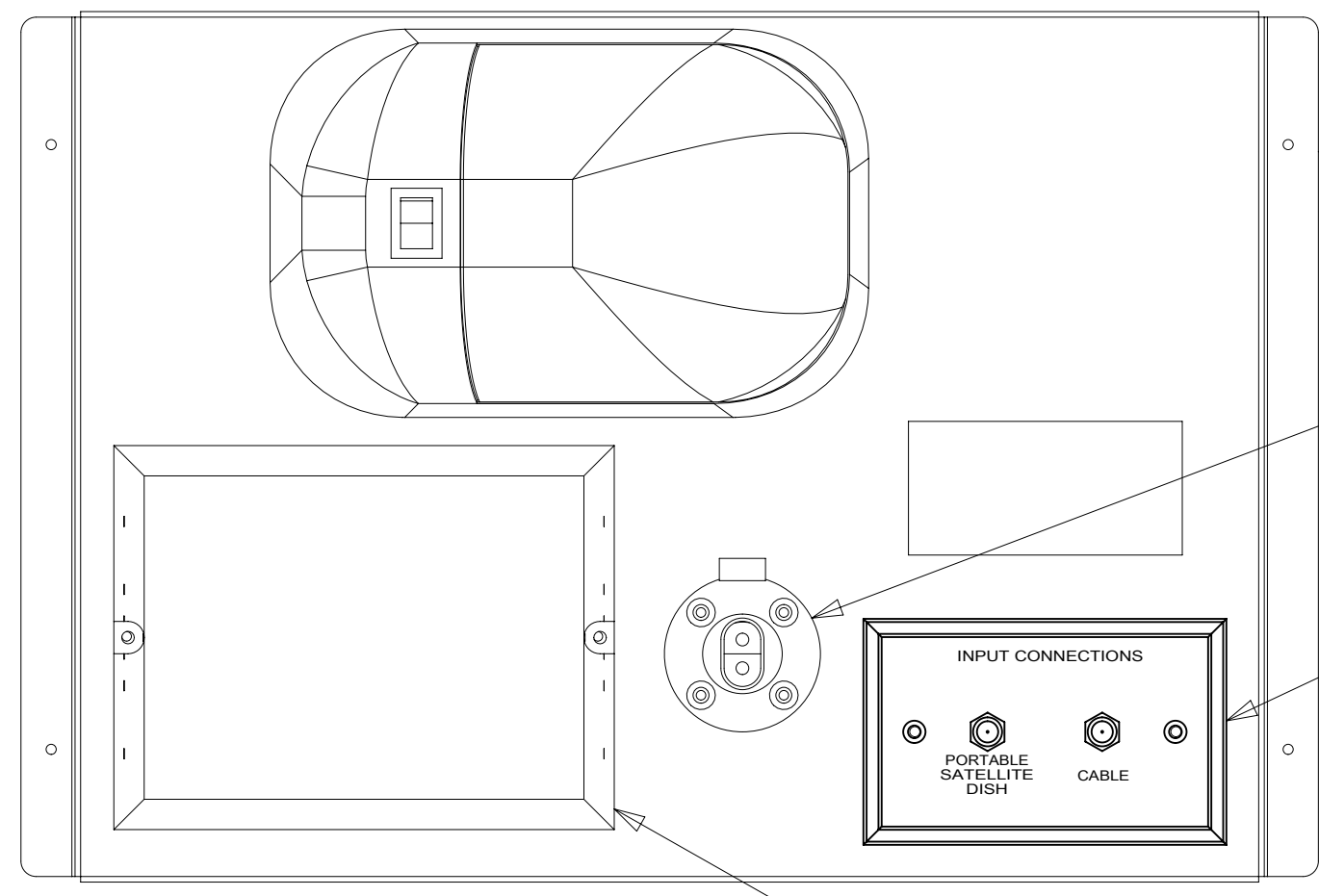


8 7 6 5 4 3 2 1



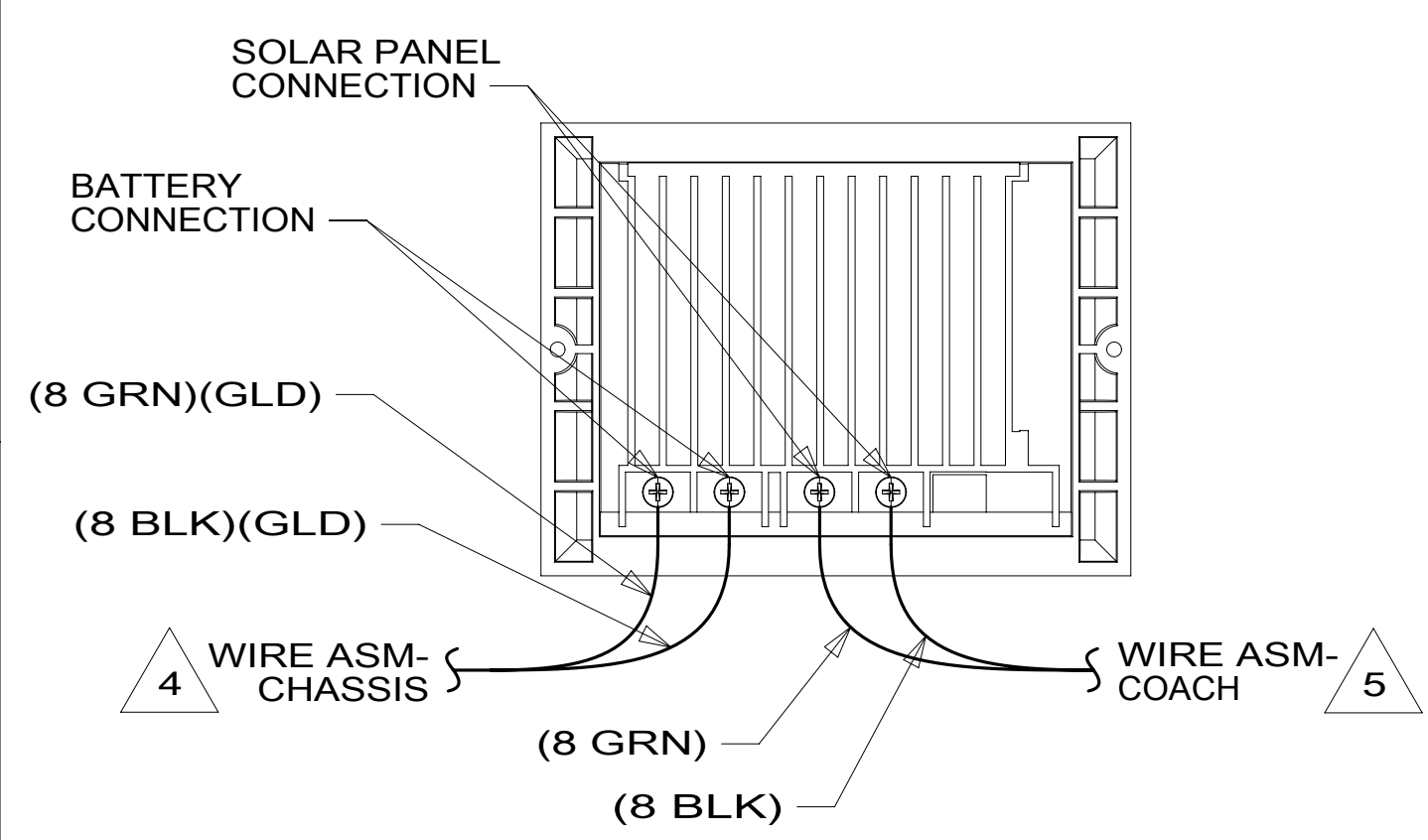
PANEL-SERVICE
000031164 / 316911-01-CHT
SCREW
G39-10-12U (4)

PORT-SOLAR, SINGLE
000163158 / 328863-01-000
SCREW
G39-10-08U (4)

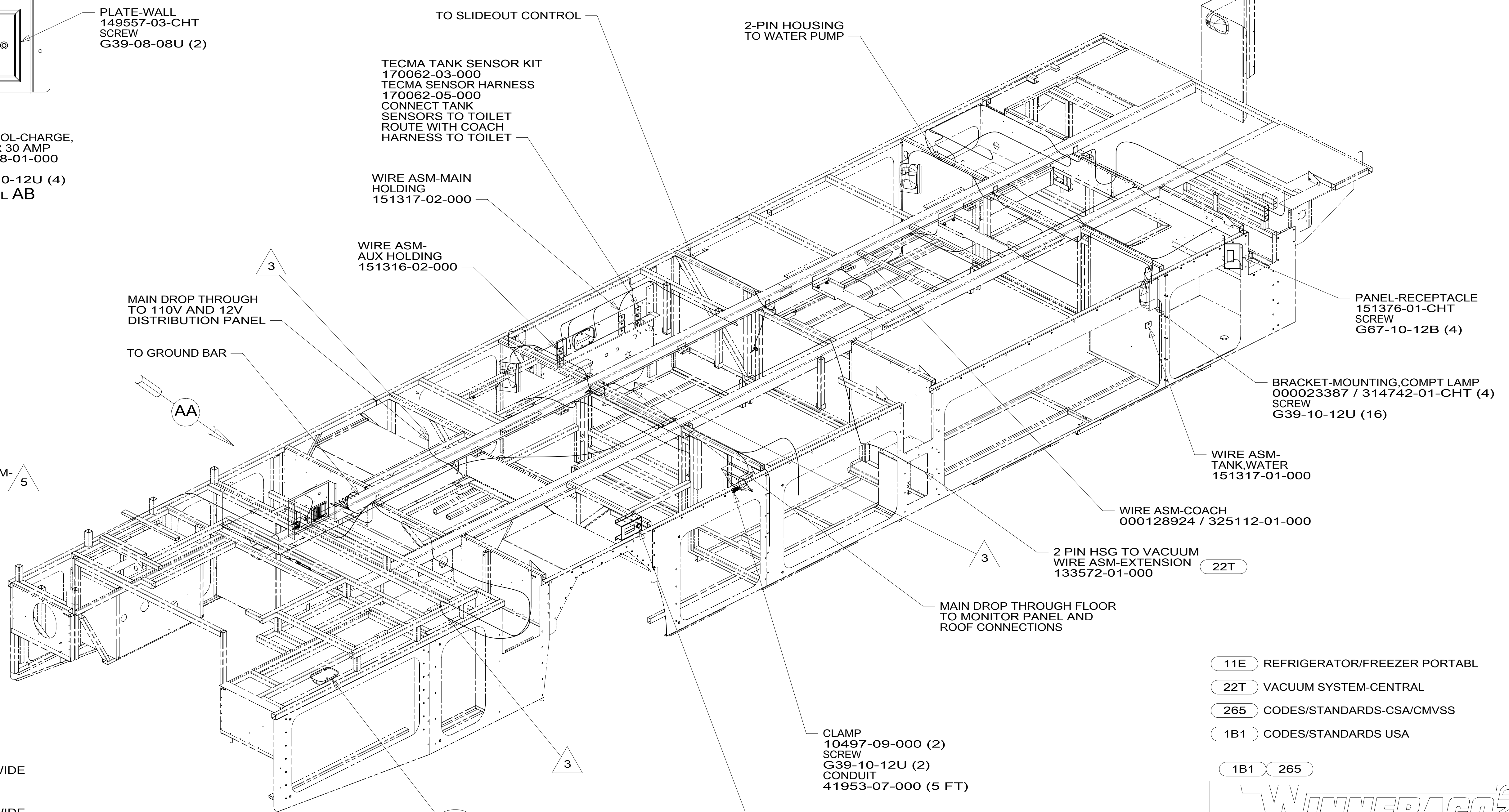
PLATE-WALL
149557-03-CHT
SCREW
G39-08-08U (2)

CONTROL-CHARGE,
SOLAR 30 AMP
191278-01-000
SCREW
G39-10-12U (4)
DETAIL AB

VIEW AA



DETAIL AB



- 5 WIRE TO BE MARKED BY WRAP OF YEL TAPE 19 MM WIDE WITHIN 50 MM OF END.
- 4 WIRE TO BE MARKED BY WRAP OF GRN TAPE 19 MM WIDE WITHIN 50 MM OF END.
- 3 WIRE PASSES UP THRU FLOOR IN THIS AREA.

2. ROUTE TANK SENSOR WIRES SO THEY DO NOT PASS OVER SENSORS. USE WIRE TIE MOUNT 155366-01-000 AND WIRE TIE 8343-01-000 AS NEEDED. TANK SURFACE MUST BE CLEANED USING ISOPROPYL ALCOHOL AND PRIMED WITH PRIMER 94.

1. AT MINIMUM ALL WIRES TO BE SUPPORTED AND SECURED PER CODE REQUIREMENTS. USE CLAMP 10495 OR 10497 OR WIRE TIE 8343 OR 108046 AND SCREW G67-XX-XXX OR G56-XX-XXX AS APPROPRIATE FOR INSTALLATION.

NOTES:

- 11E REFRIGERATOR/FREEZER PORTABL
- 22T VACUUM SYSTEM-CENTRAL
- 265 CODES/STANDARDS-CSA/CMVSS
- 1B1 CODES/STANDARDS USA

- 1B1 265



DSNR:		ALL DIMENSIONS ARE IN MILLIMETERS	
DFFR:			
UNSPECIFIED TOLERANCES:		MATERIAL:	
WHOLE DIM (X)	: 3		
ONE-PLACE (X.X)	: 1.5		
TWO-PLACE (X.XX)	: 0.50		
ANGLE	: 1°		
REFER TO ES0018 FOR FASTENER TIGHTENING GUIDELINES	WEIGHT: (LBS)	FIRST USED:	
			19 P40J

DESCRIPTION:
WIRING INSTL-BODY, 12V

SHEET:	ITEM/PART NO.:	REV:
1 OF 10	000128896 / 32510001000	

FOR ELECTRICAL TORQUE SPECIFICATIONS SEE DWG NO. 128783-01-000

FOR ELECTRICAL CALLOUTS SEE DWG NO. 121339-01-000

8 7 6 5 4 3 2 1

8

7

6

5

4

3

2

1

D

D

C

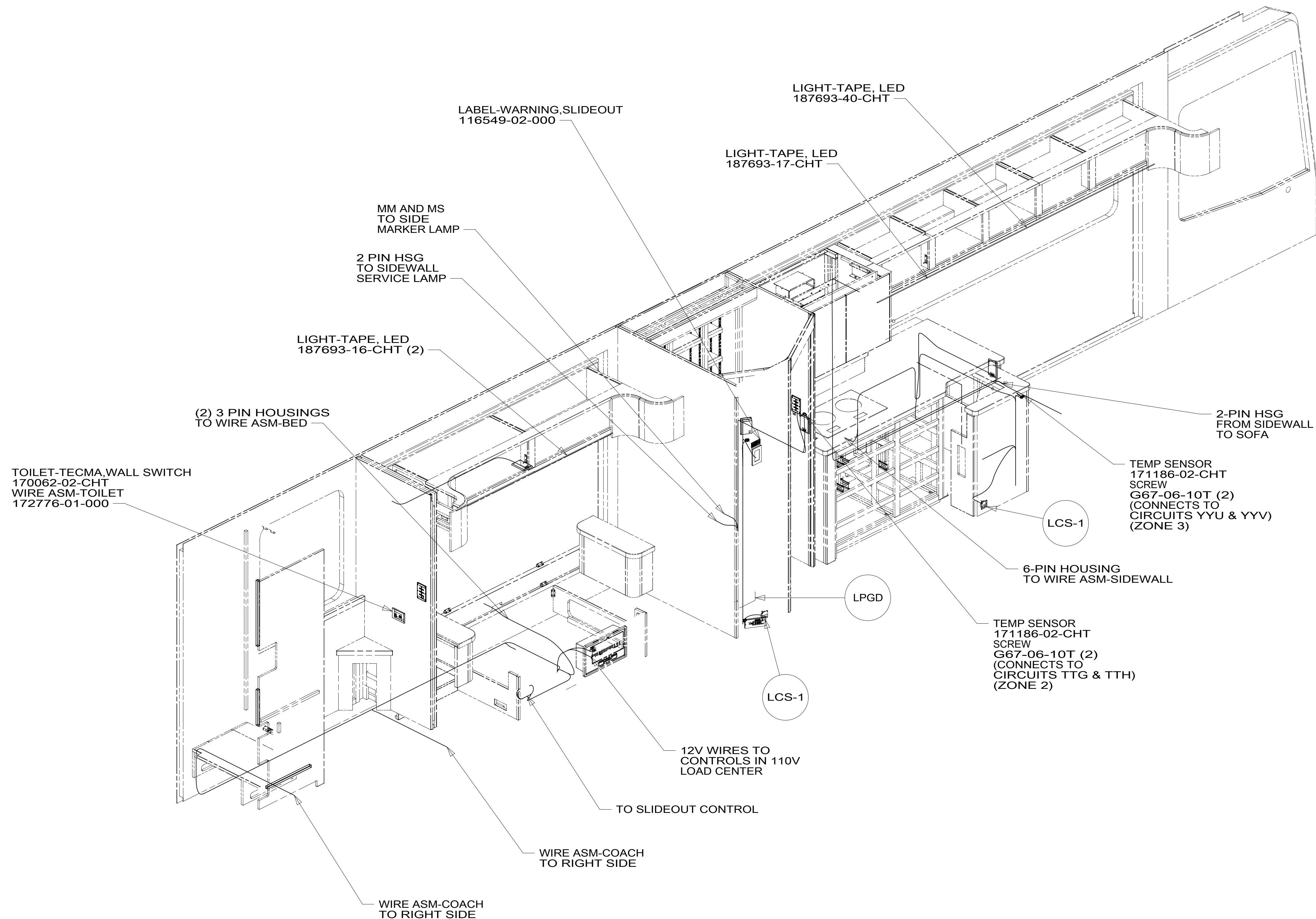
C

B

B

A

A



LABEL-WARNING,SLIDEOUT
116549-02-000

LIGHT-TAPE, LED
187693-40-CHT

LIGHT-TAPE, LED
187693-17-CHT

MM AND MS
TO SIDE
MARKER LAMP

2 PIN HSG
TO SIDEWALL
SERVICE LAMP

LIGHT-TAPE, LED
187693-16-CHT (2)

(2) 3 PIN HOUSINGS
TO WIRE ASM-BED

TOILET-TECMA,WALL SWITCH
170062-02-CHT
WIRE ASM-TOILET
172776-01-000

2-PIN HSG
FROM SIDEWALL
TO SOFA

TEMP SENSOR
171186-02-CHT
SCREW
G67-06-10T (2)
(CONNECTS TO
CIRCUITS YYU & YYV)
(ZONE 3)

LCS-1

6-PIN HOUSING
TO WIRE ASM-SIDEWALL

TEMP SENSOR
171186-02-CHT
SCREW
G67-06-10T (2)
(CONNECTS TO
CIRCUITS TTG & TTH)
(ZONE 2)

LCS-1

12V WIRES TO
CONTROLS IN 110V
LOAD CENTER

TO SLIDEOUT CONTROL

WIRE ASM-COACH
TO RIGHT SIDE

WIRE ASM-COACH
TO RIGHT SIDE

265 CODES/STANDARDS-CSA/CMVSS

1B1 CODES/STANDARDS USA

1B1 265

DESCRIPTION:
WIRING INSTL-BODY, 12V

SHEET: 2 OF 10 ITEM/PART NO: 000128896 / 32510001000 REV

FOR ELECTRICAL
TORQUE
SPECIFICATIONS
SEE DWG NO.
128783-01-000

FOR
ELECTRICAL
CALLOUTS
SEE DWG NO.
121339-01-000

NOTES:
1. AT MINIMUM ALL WIRES TO BE SUPPORTED AND SECURED PER CODE REQUIREMENTS. USE CLAMP 10495 OR 10497 OR WIRE TIE 8343 OR 108046 AND SCREW G67-XX-XXX OR G56-XX-XXX AS APPROPRIATE FOR INSTALLATION.

8

7

6

5

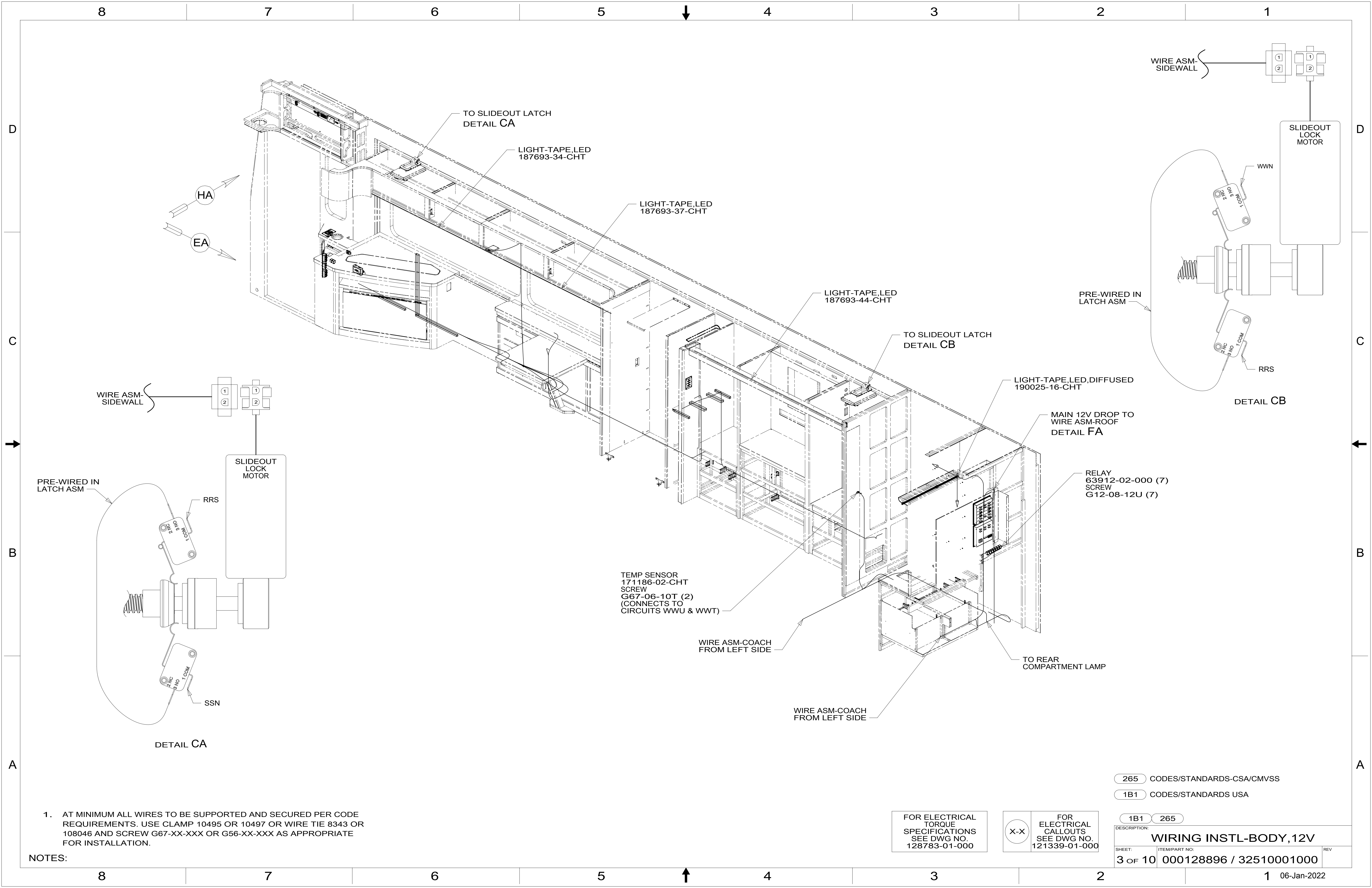
4

3

2

1

06-Jan-2022



8

7

6

5

4

3

2

1

D

D

C

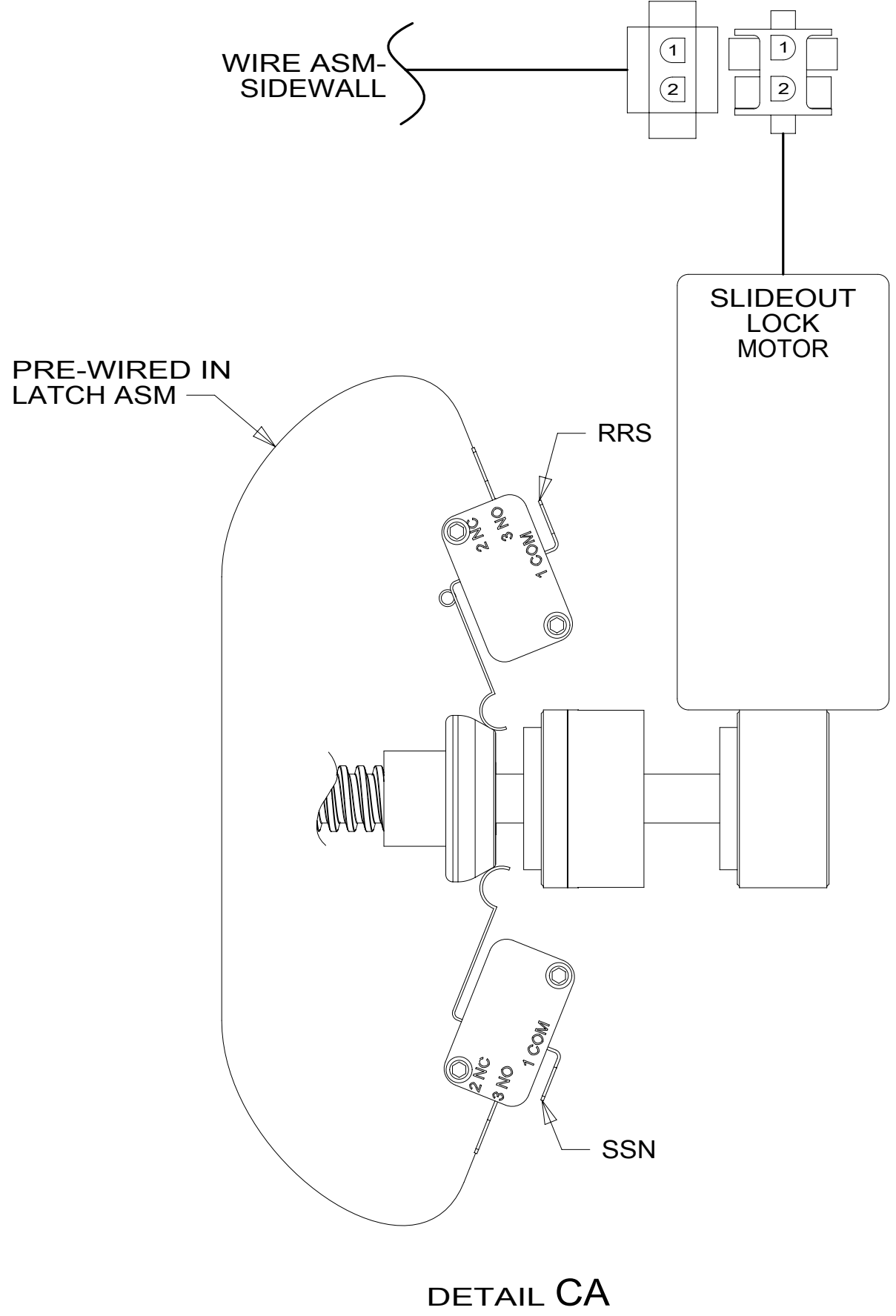
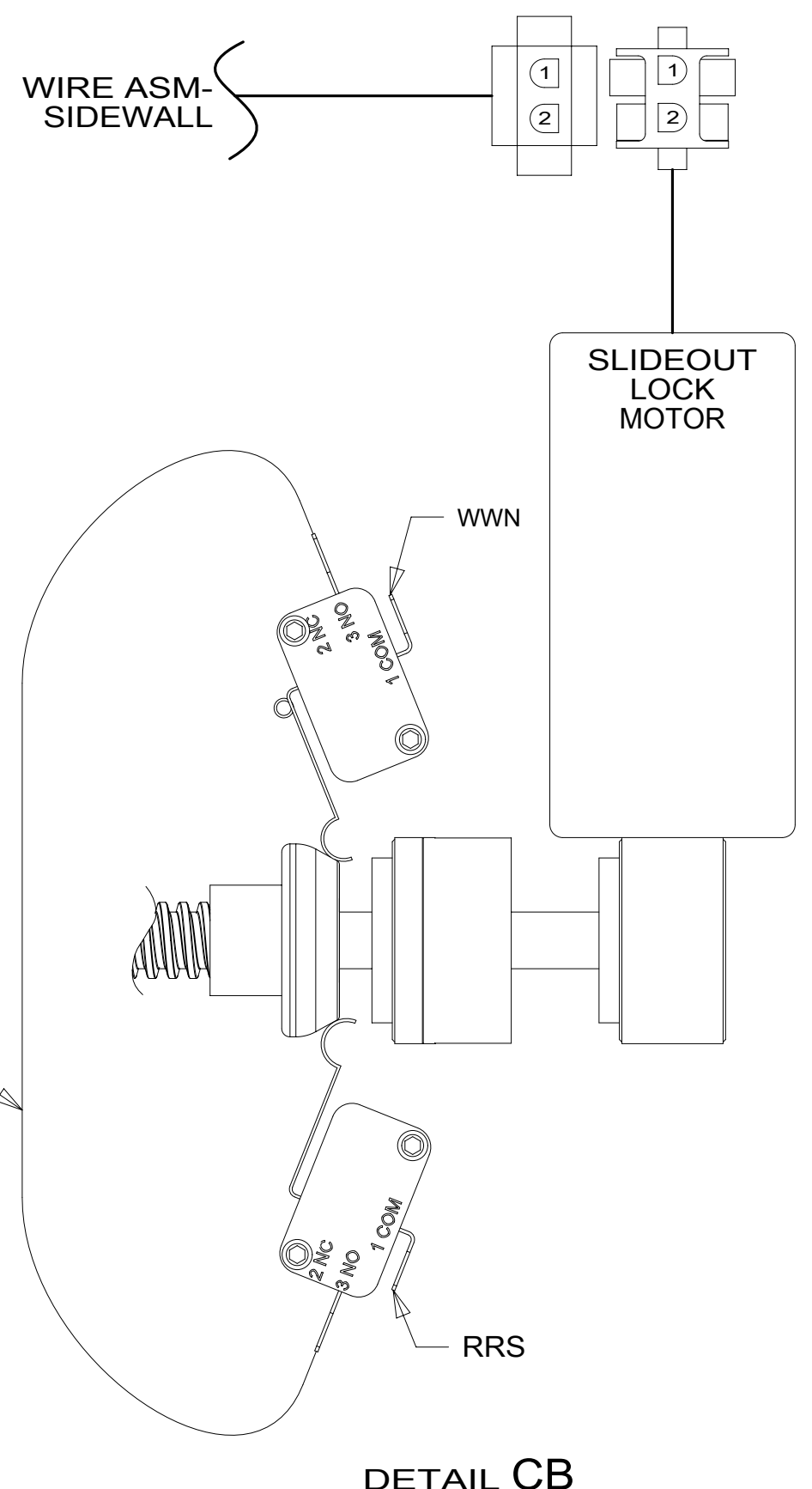
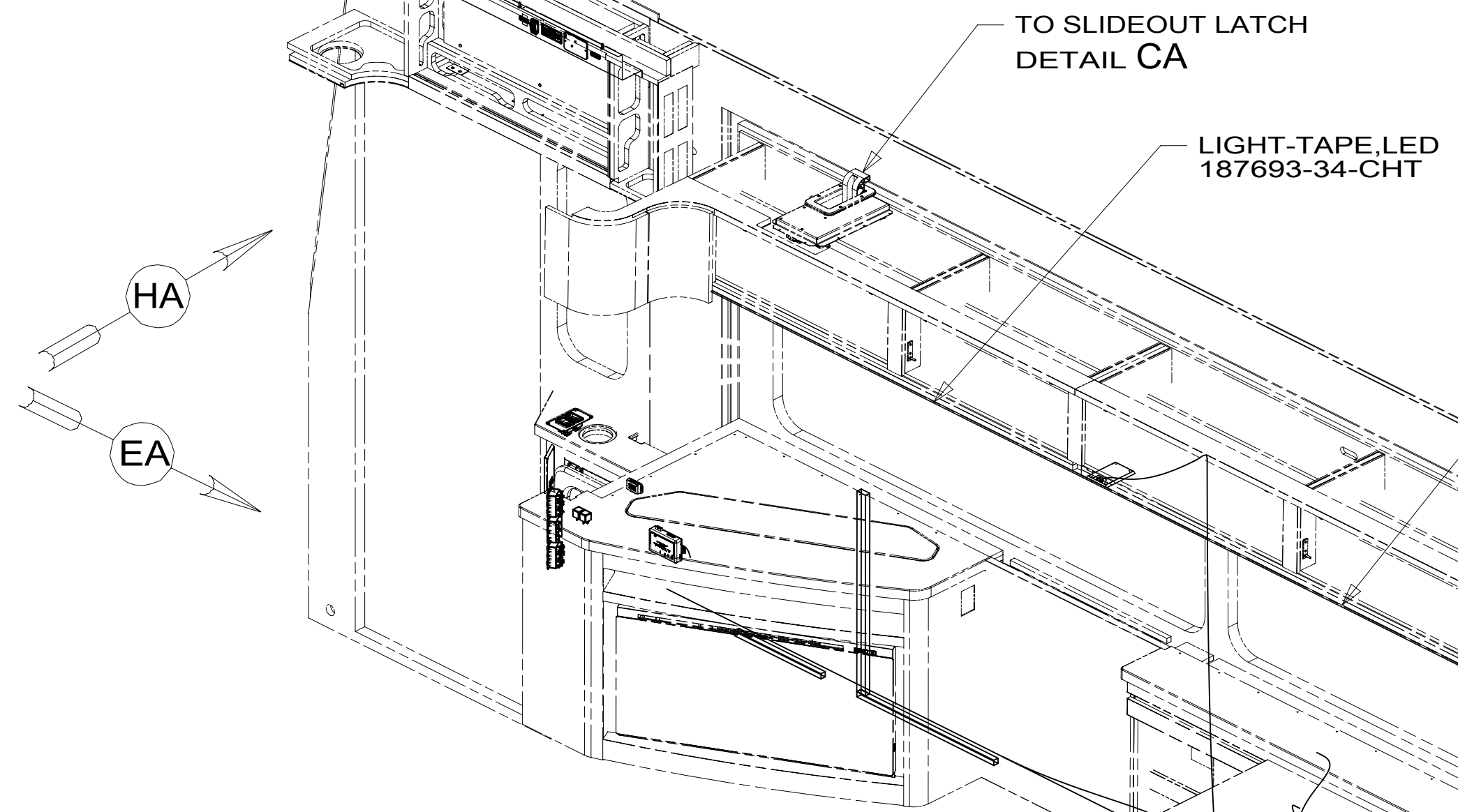
C

B

B

A

A



TEMP SENSOR
171186-02-CHT
SCREW
G67-06-10T (2)
(CONNECTS TO
CIRCUITS WWU & WWT)

WIRE ASM-COACH
FROM LEFT SIDE

WIRE ASM-COACH
FROM LEFT SIDE

LIGHT-TAPE,LED,DIFFUSED
190025-16-CHT

MAIN 12V DROP TO
WIRE ASM-ROOF
DETAIL FA

RELAY
63912-02-000 (7)
SCREW
G12-08-12U (7)

TO REAR
COMPARTMENT LAMP

NOTES:
1. AT MINIMUM ALL WIRES TO BE SUPPORTED AND SECURED PER CODE REQUIREMENTS. USE CLAMP 10495 OR 10497 OR WIRE TIE 8343 OR 108046 AND SCREW G67-XX-XXX OR G56-XX-XXX AS APPROPRIATE FOR INSTALLATION.

FOR ELECTRICAL
TORQUE
SPECIFICATIONS
SEE DWG NO.
128783-01-000

FOR ELECTRICAL
CALLOUTS
SEE DWG NO.
121339-01-000

265 CODES/STANDARDS-CSA/CMVSS
1B1 CODES/STANDARDS USA

1B1 265

DESCRIPTION:
WIRING INSTL-BODY, 12V

SHEET: 3 OF 10 ITEM/PART NO: 000128896 / 32510001000 REV

1 06-Jan-2022

8

7

6

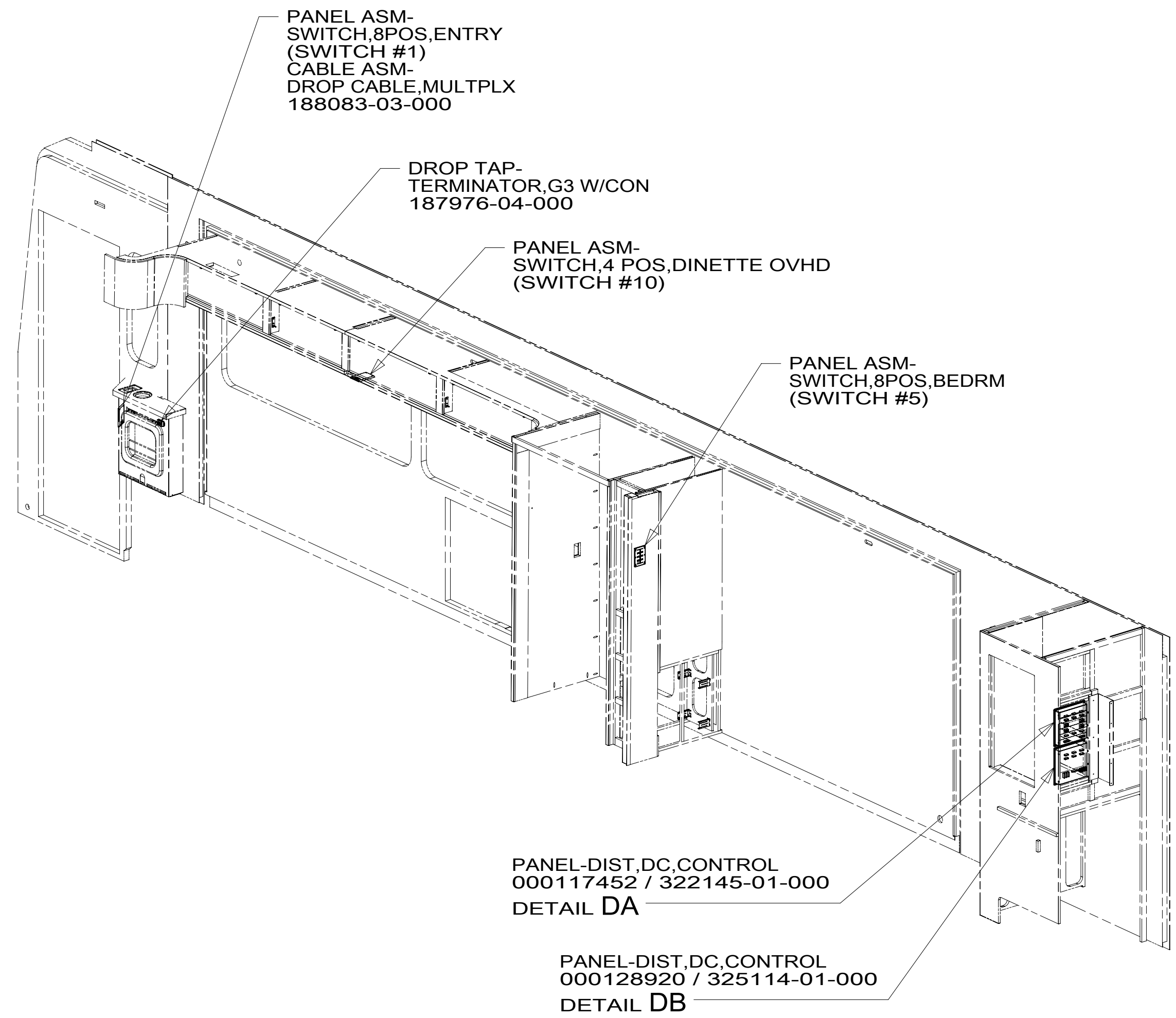
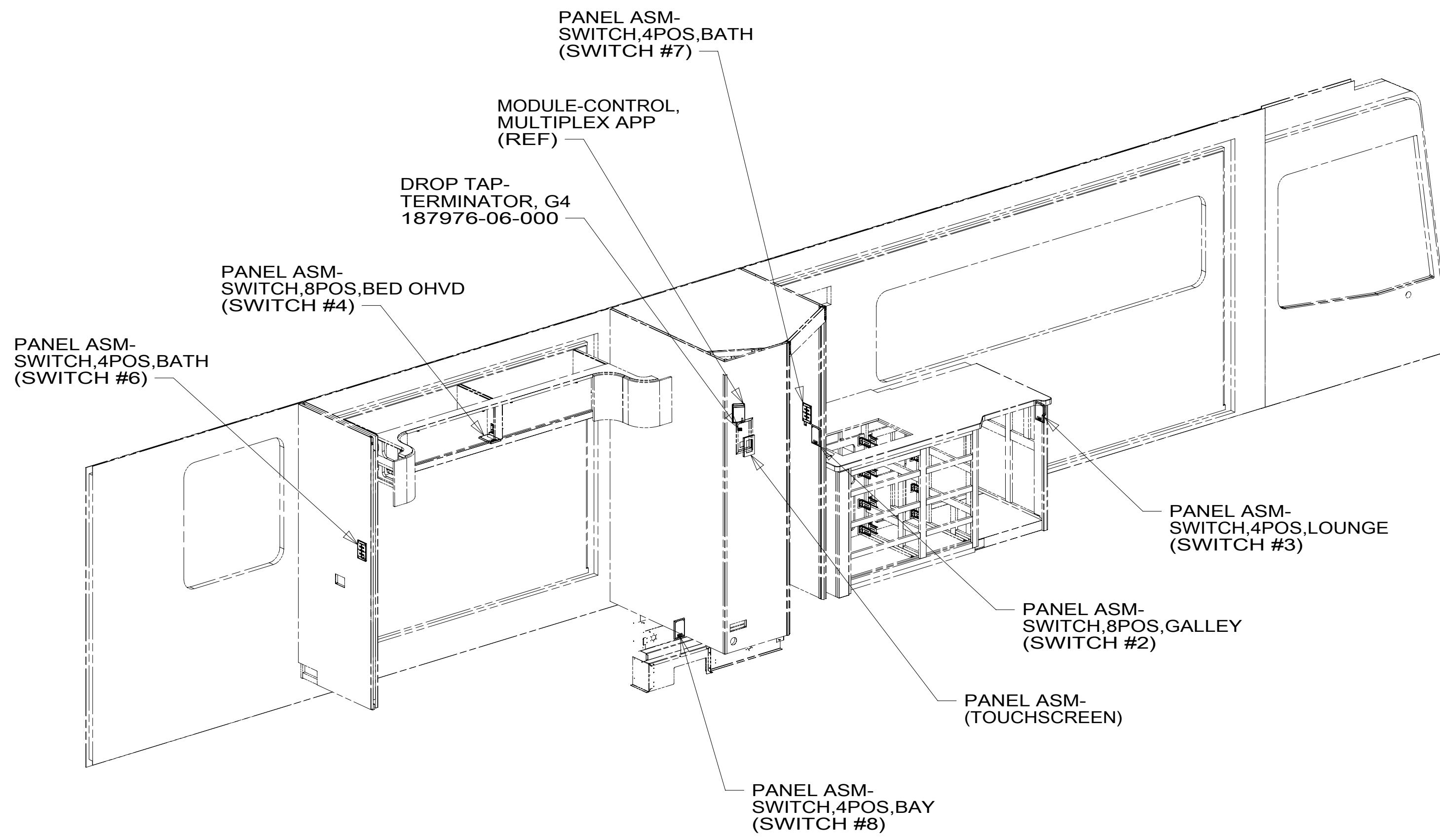
5

4

3

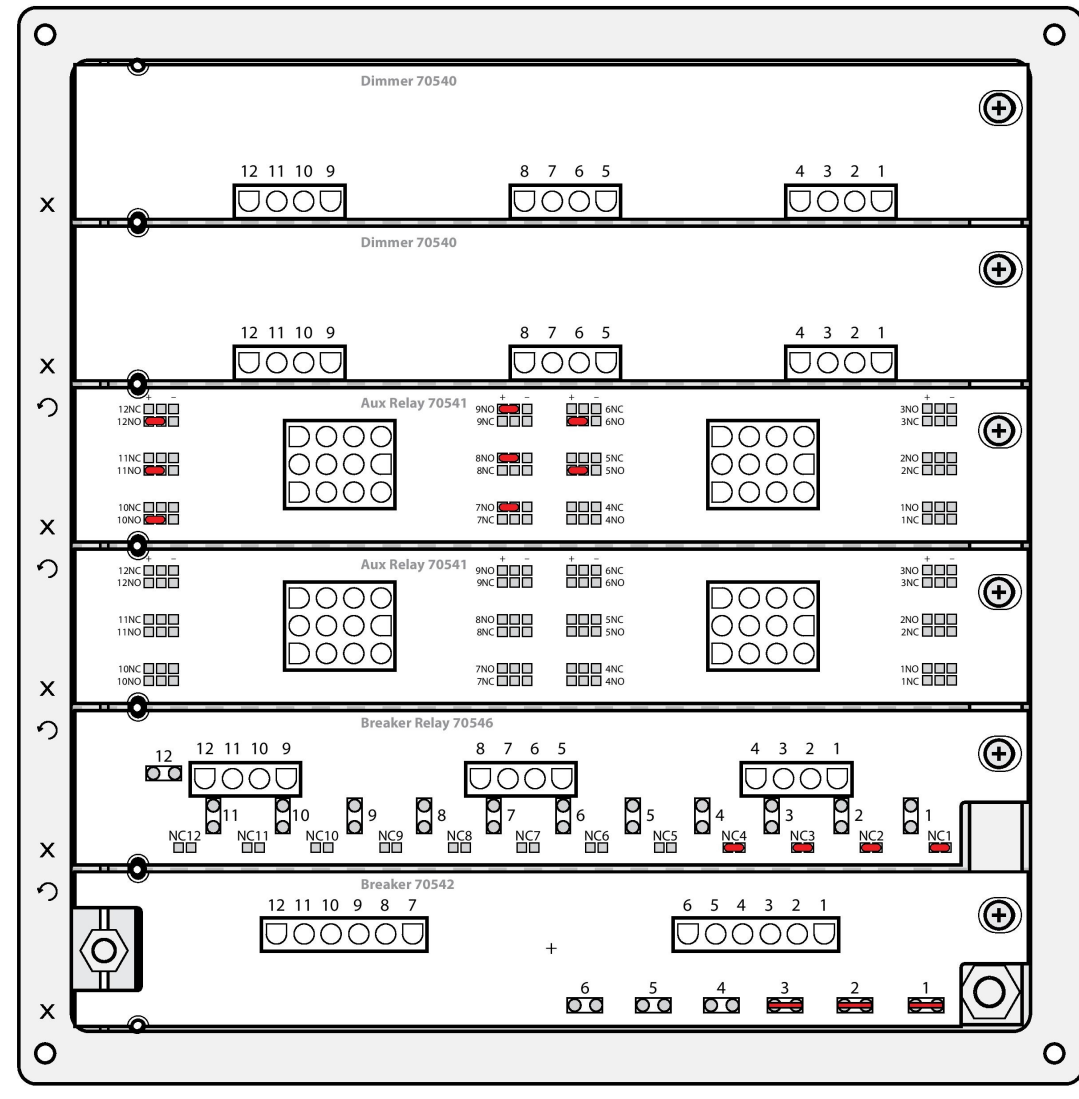
2

1



G6 Soldering

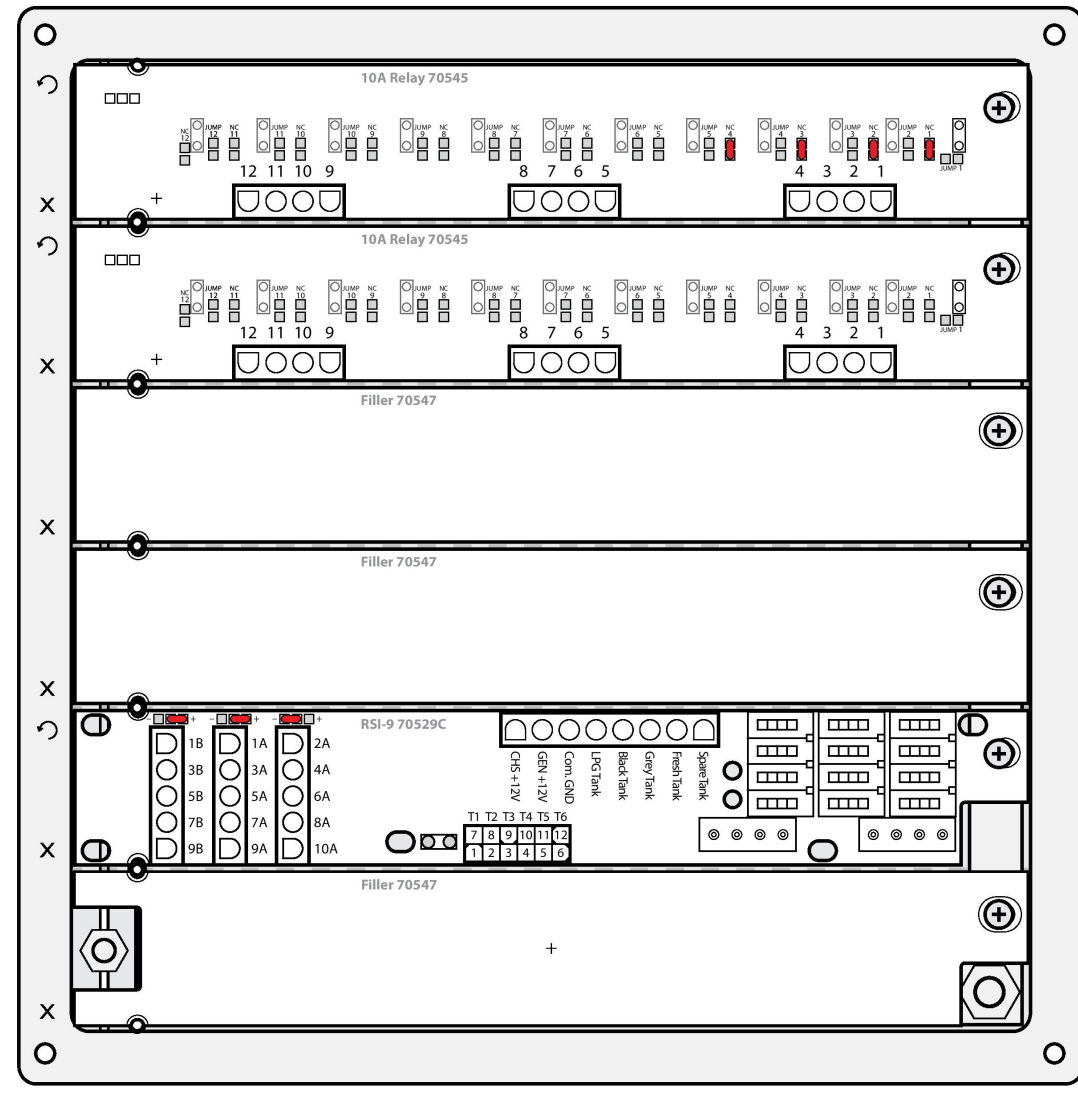
Customer: Winnebago Model: P-Series V3 - G6 #1 Date: 08/22/16



DETAIL DA

G6 Soldering

Customer: Winnebago Model: P-Series V3 - 705238 Date: 02/06/17



DETAIL DB

1. SWITCHES PART OF KIT-SWITCH,PANELS.MULTIPLEX 000128925 / 325118-01-000. SEE SHEET 10 FOR ADDITIONAL INFORMATION.

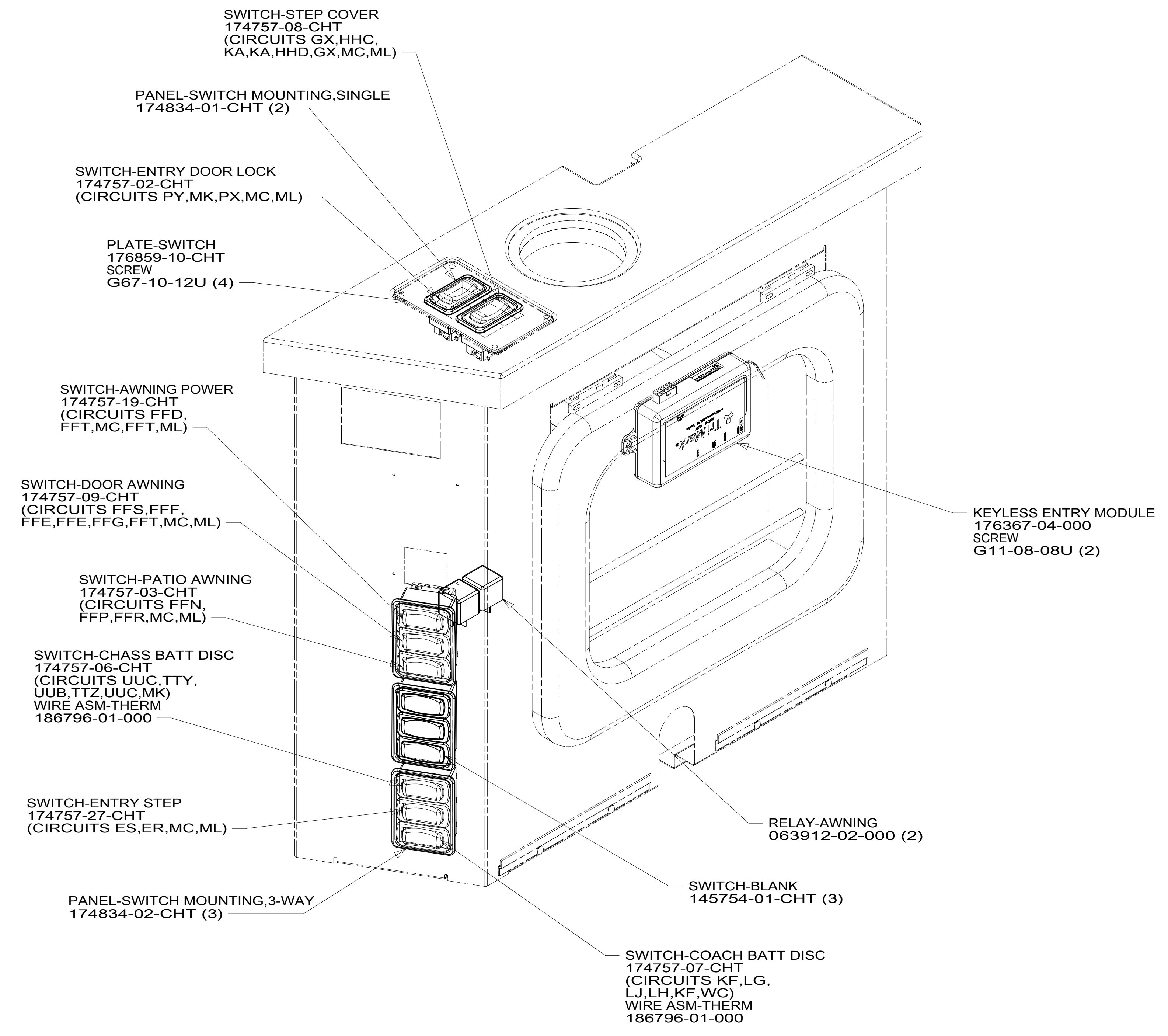
NOTES:

265 CODES/STANDARDS-CSA/CMVSS
1B1 CODES/STANDARDS USA

FOR ELECTRICAL TORQUE SPECIFICATIONS SEE DWG NO. 128783-01-000

X-X FOR ELECTRICAL CALLOUTS SEE DWG NO. 121339-01-000

DESCRIPTION:	
1B1 265	
WIRING INSTL-BODY, 12V	
SHEET:	ITEM/PART NO. REV
4 OF 10	000128896 / 32510001000



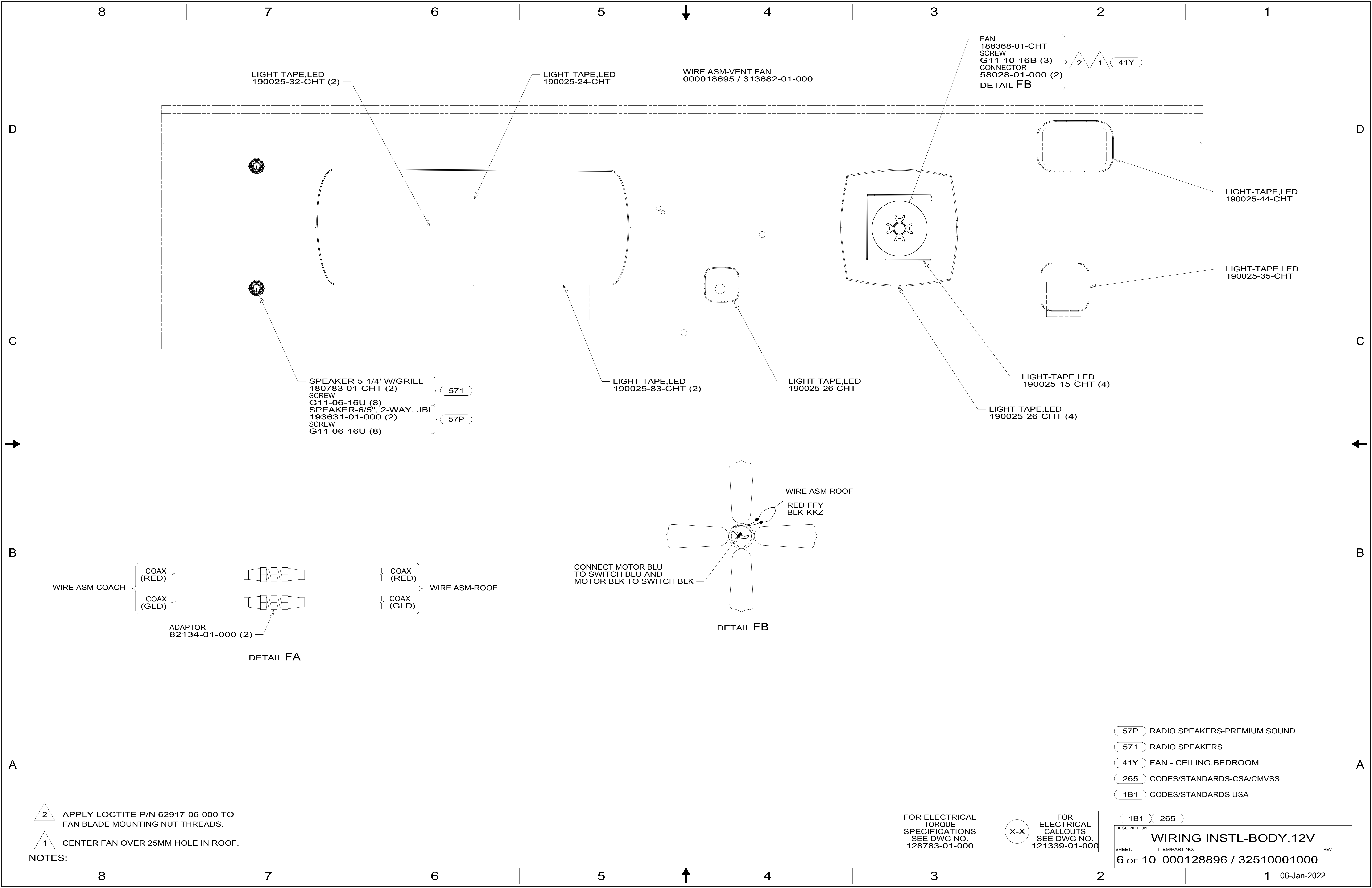
DETAIL EA

265 CODES/STANDARDS-CSA/CMVSS
1B1 CODES/STANDARDS USA

FOR ELECTRICAL
TORQUE
SPECIFICATIONS
SEE DWG NO.
128783-01-000

FOR
ELECTRICAL
CALLOUTS
SEE DWG NO.
121339-01-000

DESCRIPTION:	
1B1 265	
WIRING INSTL-BODY, 12V	
SHEET:	ITEM/PART NO:
5 of 10	000128896 / 32510001000
REV	
1 06-Jan-2022	



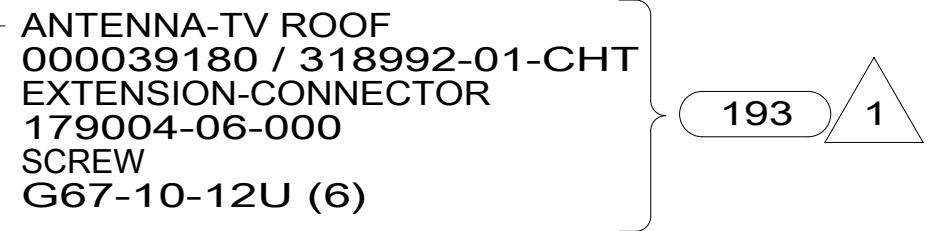
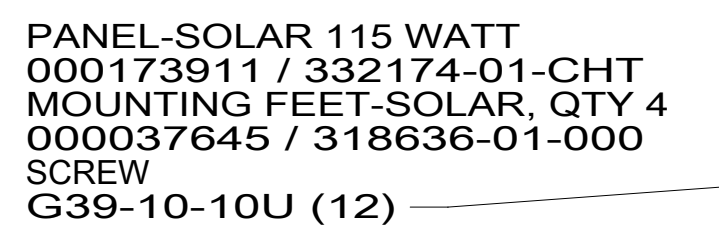
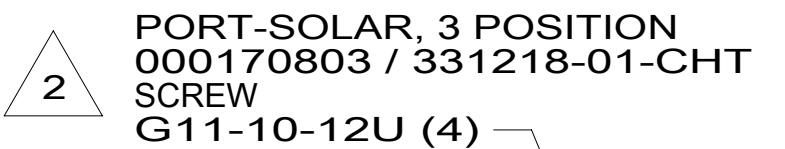
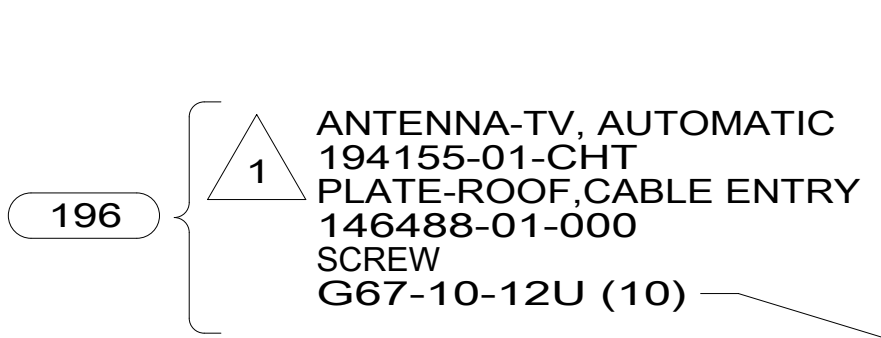
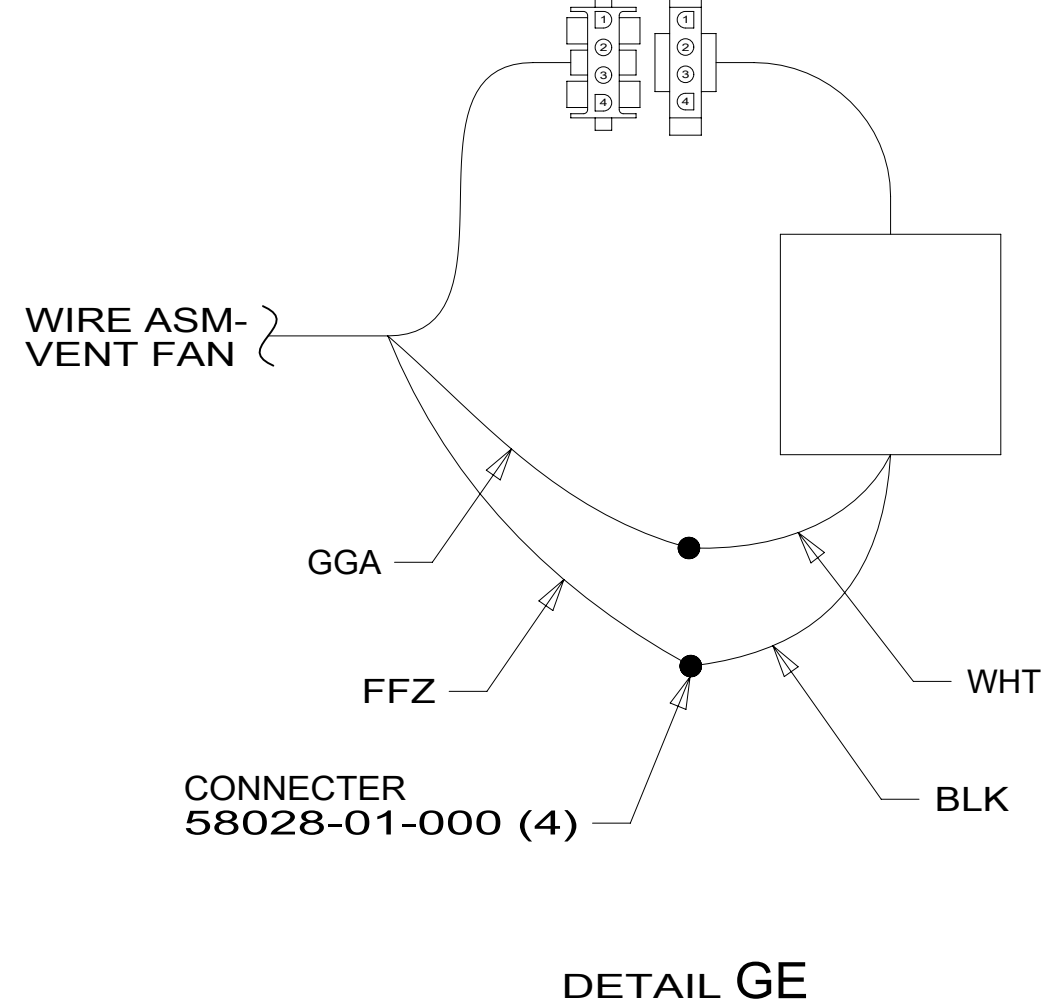
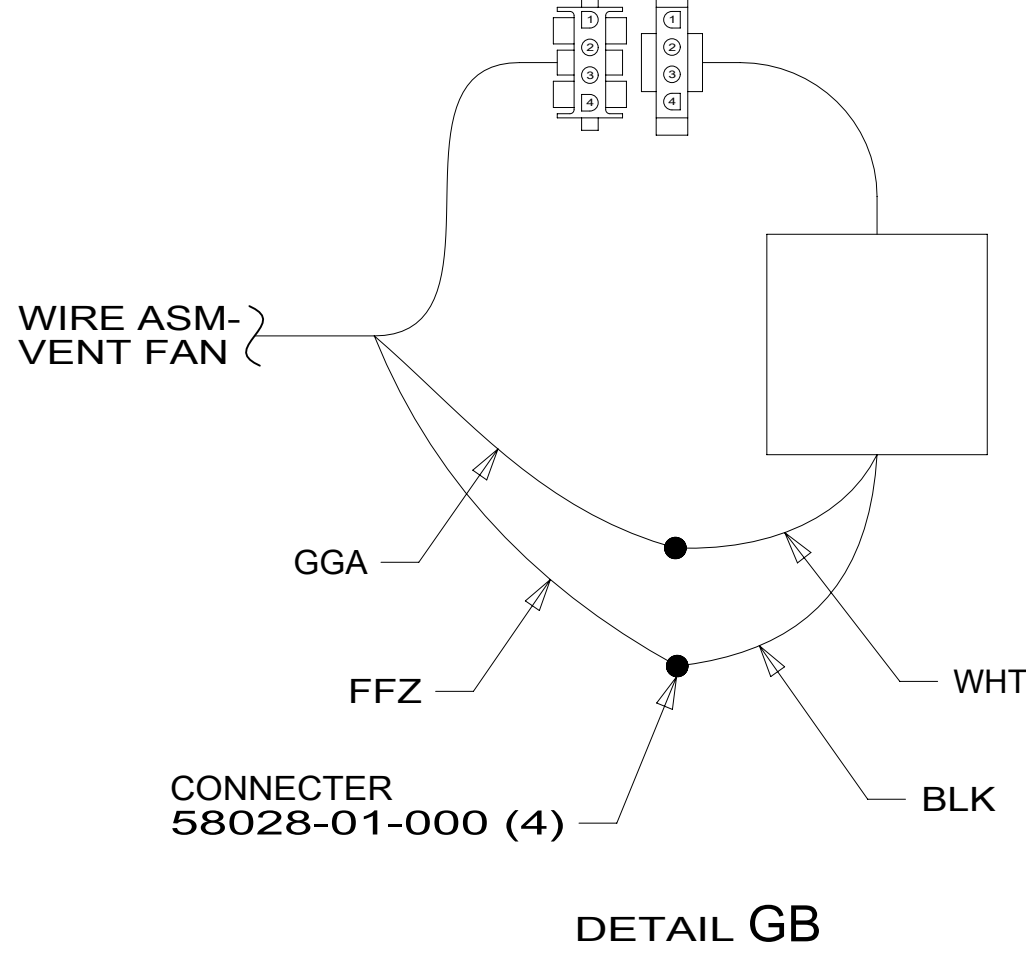
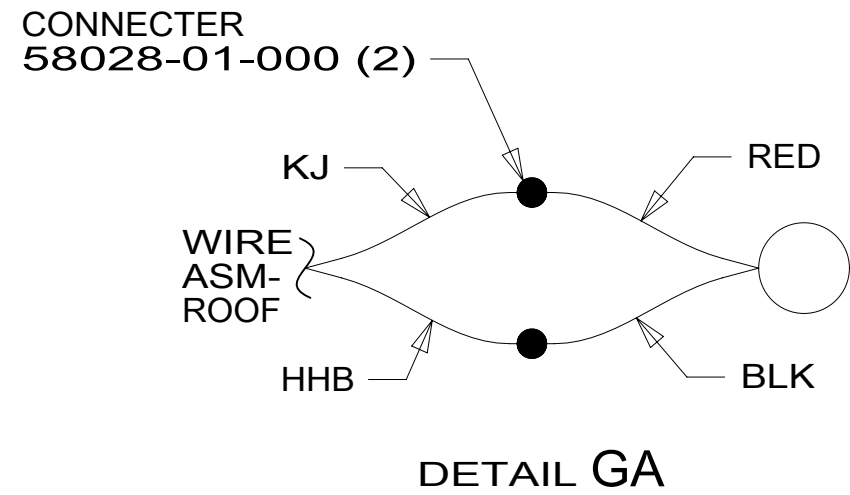
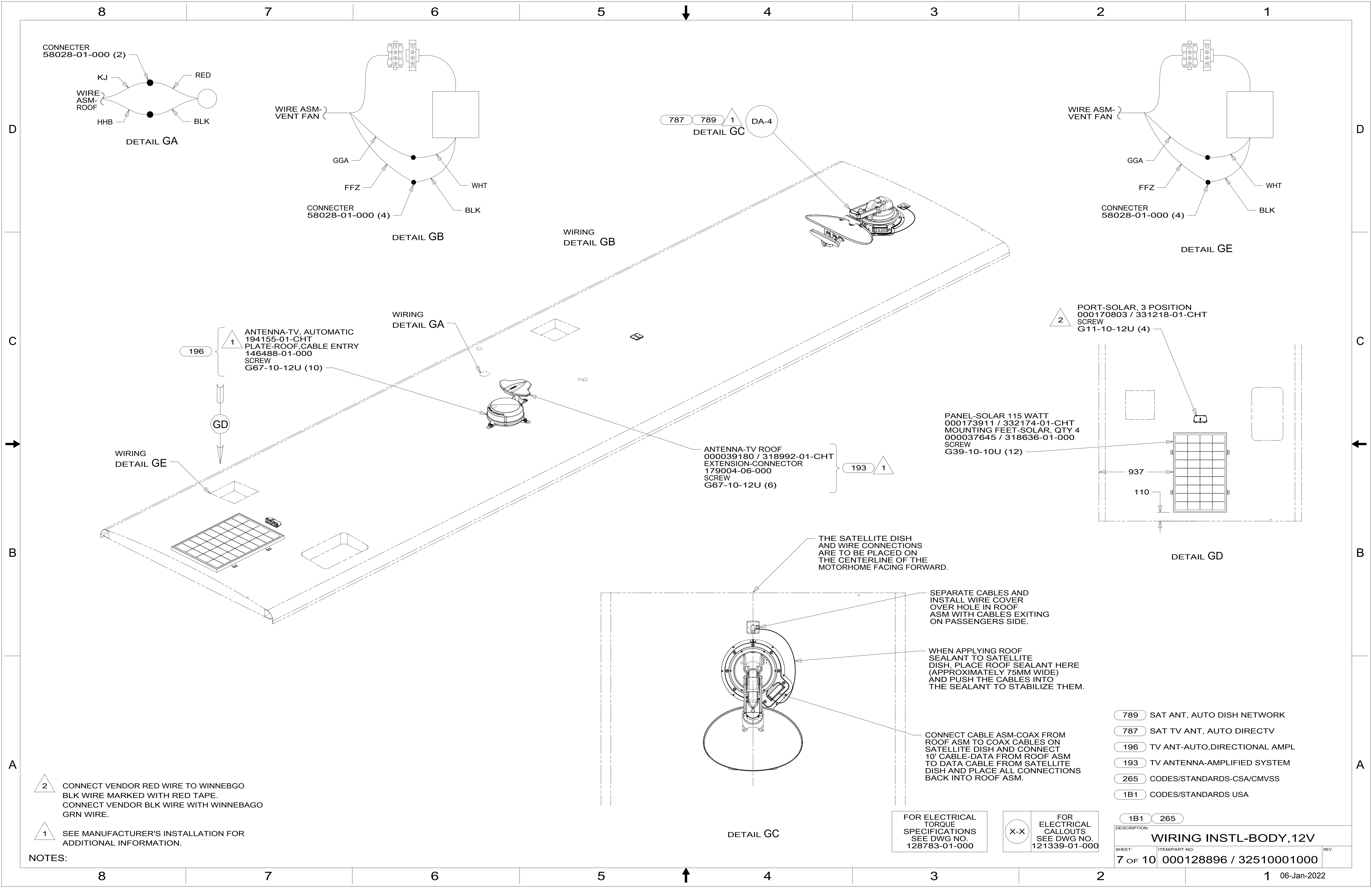
- NOTES:
- 2 APPLY LOCTITE P/N 62917-06-000 TO FAN BLADE MOUNTING NUT THREADS.
 - 1 CENTER FAN OVER 25MM HOLE IN ROOF.

FOR ELECTRICAL TORQUE SPECIFICATIONS SEE DWG NO. 128783-01-000

FOR ELECTRICAL CALLOUTS SEE DWG NO. 121339-01-000

- 57P RADIO SPEAKERS-PREMIUM SOUND
- 571 RADIO SPEAKERS
- 41Y FAN - CEILING,BEDROOM
- 265 CODES/STANDARDS-CSA/CMVSS
- 1B1 CODES/STANDARDS USA

DESCRIPTION:		1B1 265	
WIRING INSTL-BODY, 12V			
SHEET:	ITEM/PART NO.:	REV	
6 OF 10	000128896 / 32510001000		

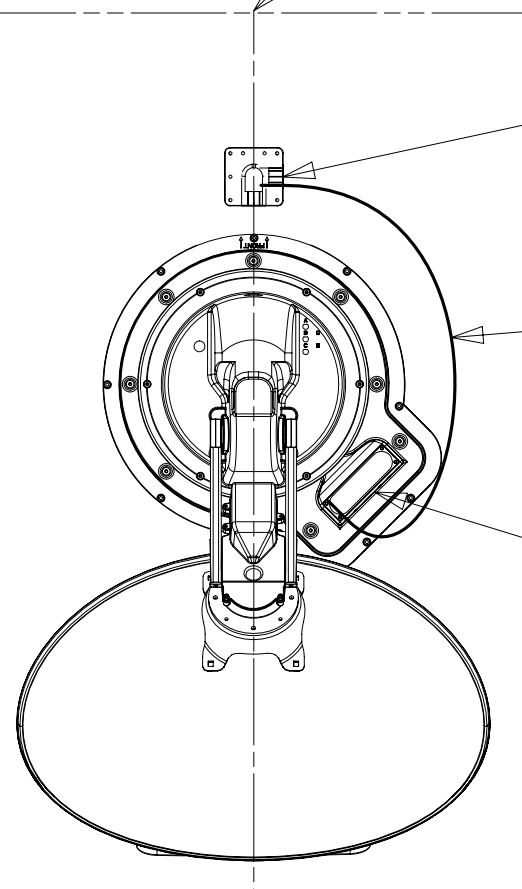


THE SATELLITE DISH AND WIRE CONNECTIONS ARE TO BE PLACED ON THE CENTERLINE OF THE MOTORHOME FACING FORWARD.

SEPARATE CABLES AND INSTALL WIRE COVER OVER HOLE IN ROOF ASM WITH CABLES EXITING ON PASSENGERS SIDE.

WHEN APPLYING ROOF SEALANT TO SATELLITE DISH, PLACE ROOF SEALANT HERE (APPROXIMATELY 75MM WIDE) AND PUSH THE CABLES INTO THE SEALANT TO STABILIZE THEM.

CONNECT CABLE ASM-COAX FROM ROOF ASM TO COAX CABLES ON SATELLITE DISH AND CONNECT 10' CABLE-DATA FROM ROOF ASM TO DATA CABLE FROM SATELLITE DISH AND PLACE ALL CONNECTIONS BACK INTO ROOF ASM.



2 CONNECT VENDOR RED WIRE TO WINNEBGO BLK WIRE MARKED WITH RED TAPE. CONNECT VENDOR BLK WIRE WITH WINNEBAGO GRN WIRE.

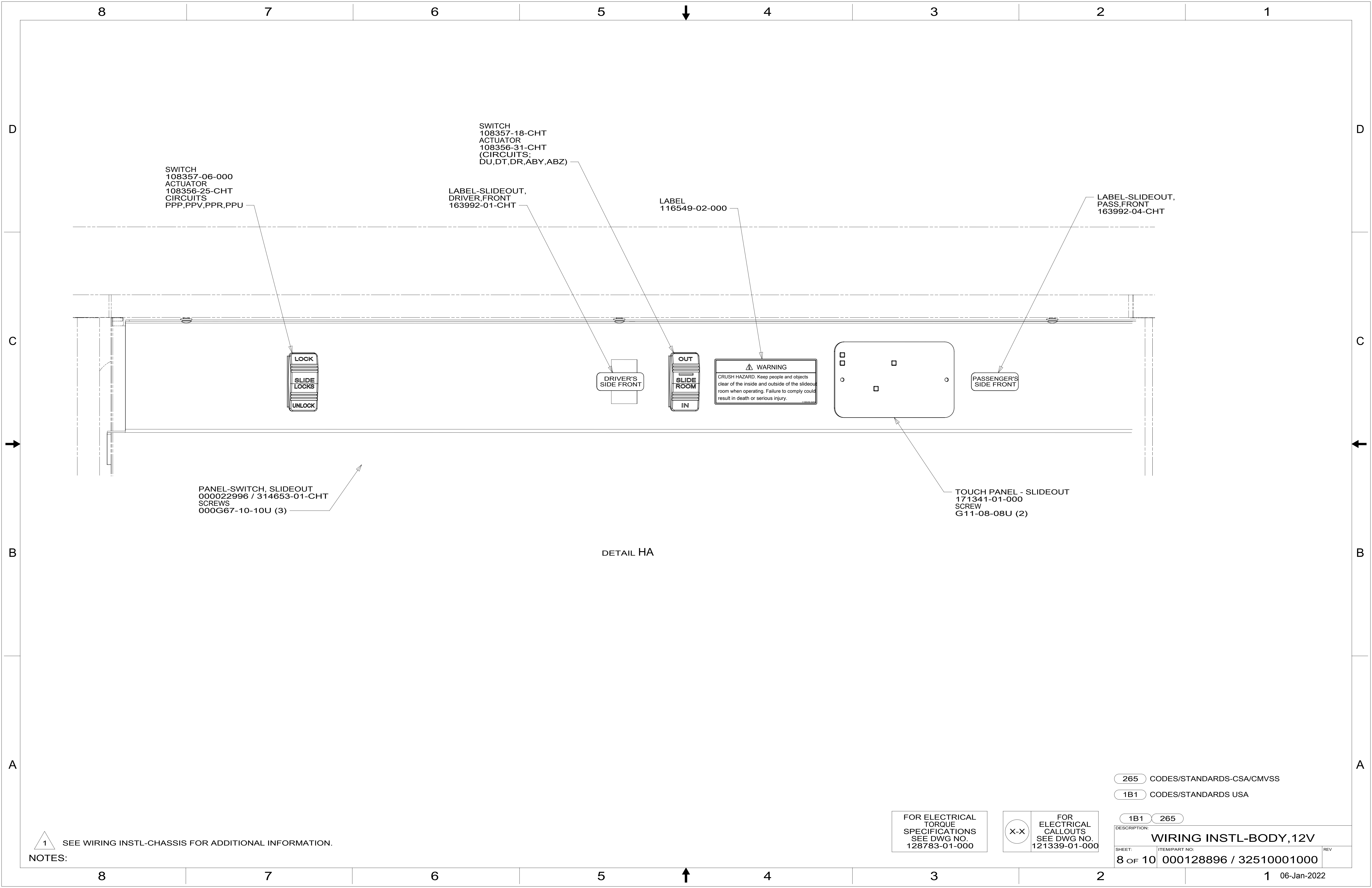
1 SEE MANUFACTURER'S INSTALLATION FOR ADDITIONAL INFORMATION.

- 789 SAT ANT, AUTO DISH NETWORK
- 787 SAT TV ANT, AUTO DIRECTV
- 196 TV ANT-AUTO,DIRECTIONAL AMPL
- 193 TV ANTENNA-AMPLIFIED SYSTEM
- 265 CODES/STANDARDS-CSA/CMVSS
- 1B1 CODES/STANDARDS USA

FOR ELECTRICAL TORQUE SPECIFICATIONS SEE DWG NO. 128783-01-000

FOR ELECTRICAL CALLOUTS SEE DWG NO. 121339-01-000

DESCRIPTION:	1B1 265	
WIRING INSTL-BODY, 12V		
SHEET:	ITEM/PART NO:	REV
7 of 10	000128896 / 32510001000	



SWITCH
108357-06-000
ACTUATOR
108356-25-CHT
CIRCUITS
PPP,PPV,PPR,PPU

SWITCH
108357-18-CHT
ACTUATOR
108356-31-CHT
(CIRCUITS:
DU,DT,DR,ÄBY,ABZ)

LABEL-SLIDEOUT,
DRIVER,FRONT
163992-01-CHT

LABEL
116549-02-000

LABEL-SLIDEOUT,
PASS,FRONT
163992-04-CHT

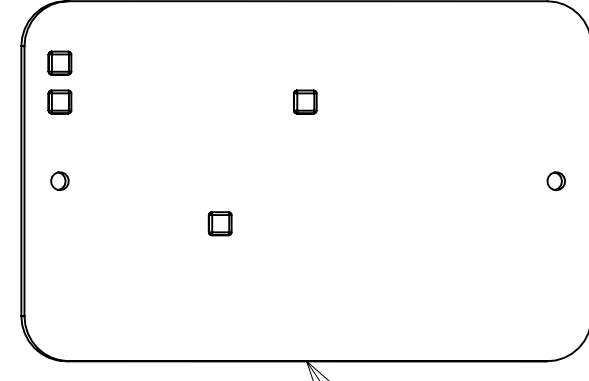
LOCK
SLIDE
LOCKS
UNLOCK

DRIVER'S
SIDE FRONT

OUT
SLIDE
ROOM
IN

⚠ WARNING
CRUSH HAZARD. Keep people and objects
clear of the inside and outside of the slideout
room when operating. Failure to comply could
result in death or serious injury.

PASSENGER'S
SIDE FRONT



TOUCH PANEL - SLIDEOUT
171341-01-000
SCREW
G11-08-08U (2)

PANEL-SWITCH, SLIDEOUT
000022996 / 314653-01-CHT
SCREWS
000G67-10-10U (3)

DETAIL HA

1 SEE WIRING INSTL-CHASSIS FOR ADDITIONAL INFORMATION.

NOTES:

265 CODES/STANDARDS-CSA/CMVSS

1B1 CODES/STANDARDS USA

1B1 265

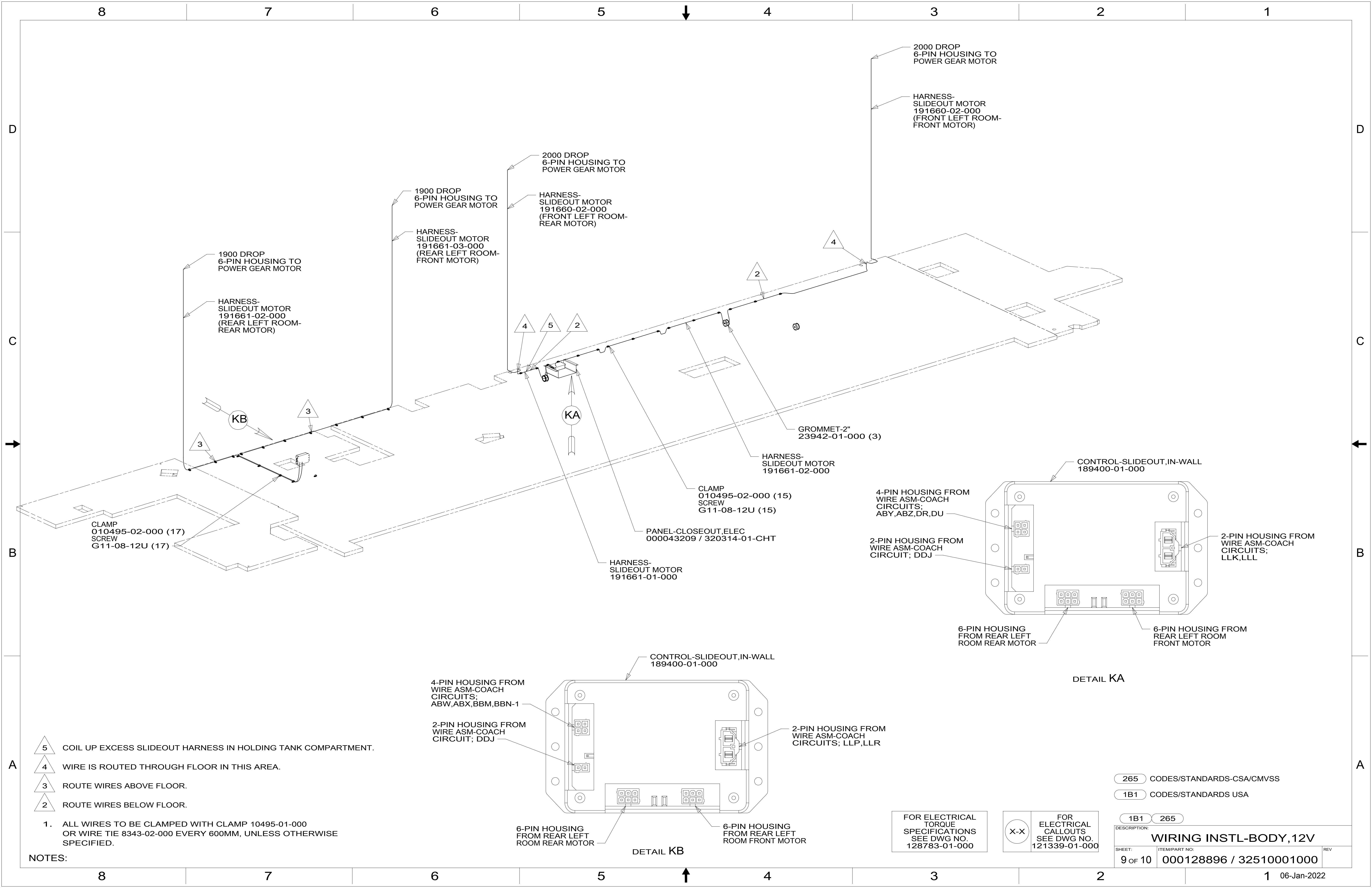
FOR ELECTRICAL
TORQUE
SPECIFICATIONS
SEE DWG NO.
128783-01-000

FOR
ELECTRICAL
CALLOUTS
SEE DWG NO.
121339-01-000

DESCRIPTION:
WIRING INSTL-BODY, 12V

SHEET: 8 OF 10 ITEM/PART NO: 000128896 / 32510001000 REV

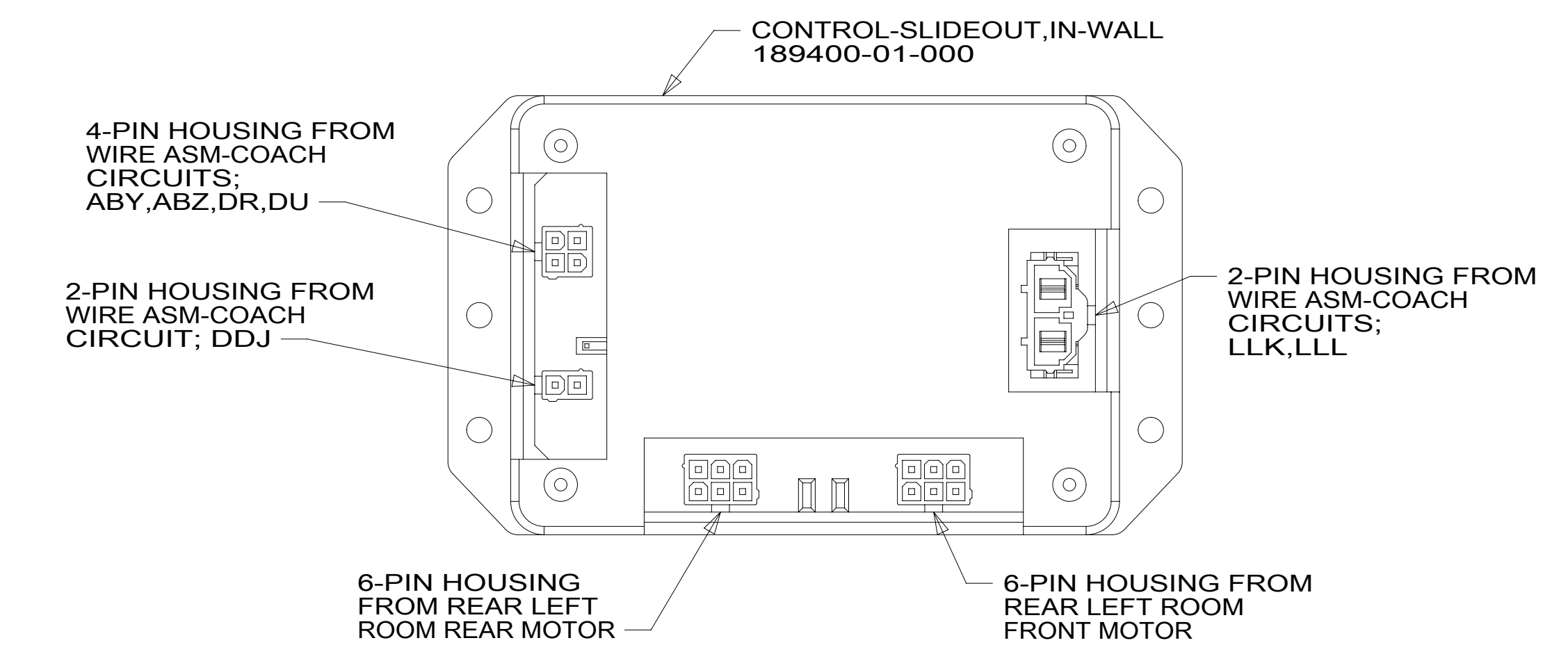
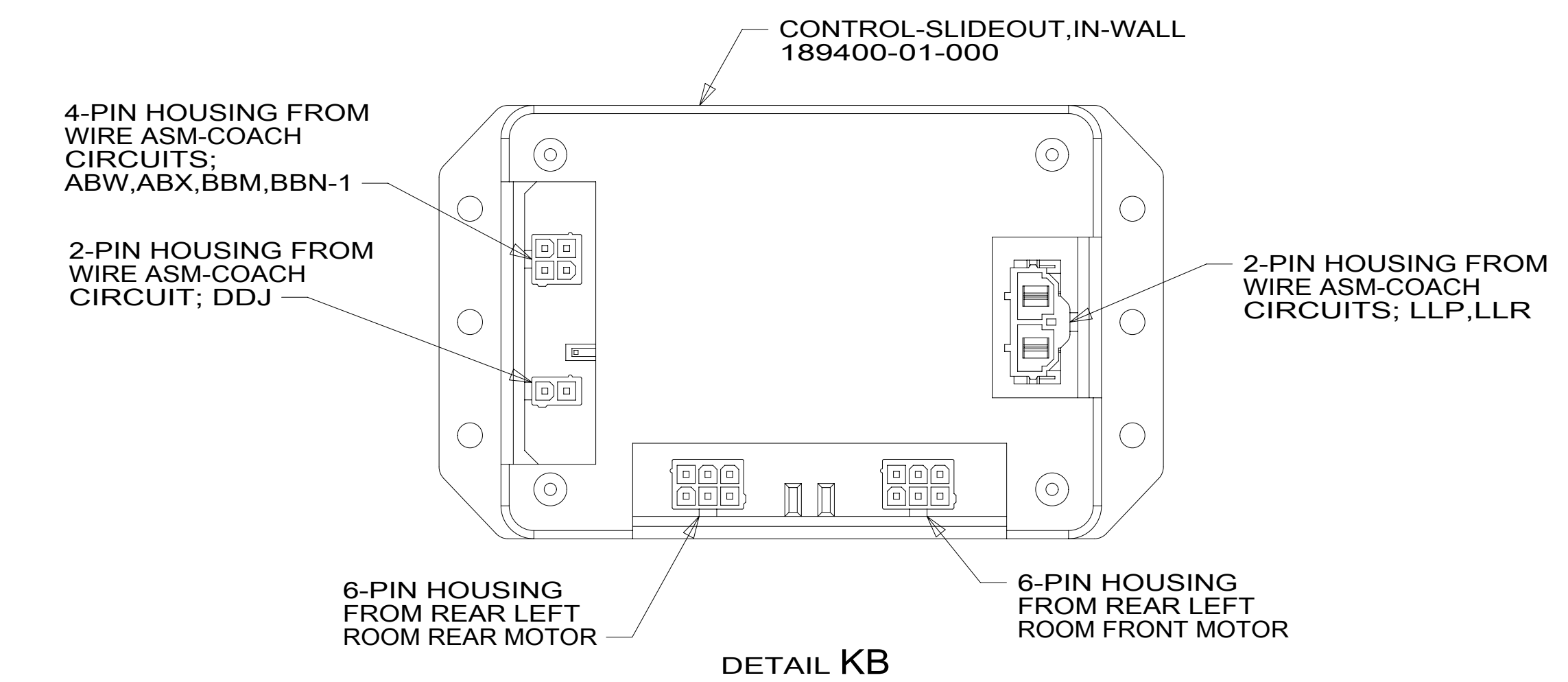
1 06-Jan-2022



- 5 COIL UP EXCESS SLIDEOUT HARNESS IN HOLDING TANK COMPARTMENT.
- 4 WIRE IS ROUTED THROUGH FLOOR IN THIS AREA.
- 3 ROUTE WIRES ABOVE FLOOR.
- 2 ROUTE WIRES BELOW FLOOR.

1. ALL WIRES TO BE CLAMPED WITH CLAMP 10495-01-000 OR WIRE TIE 8343-02-000 EVERY 600MM, UNLESS OTHERWISE SPECIFIED.

NOTES:

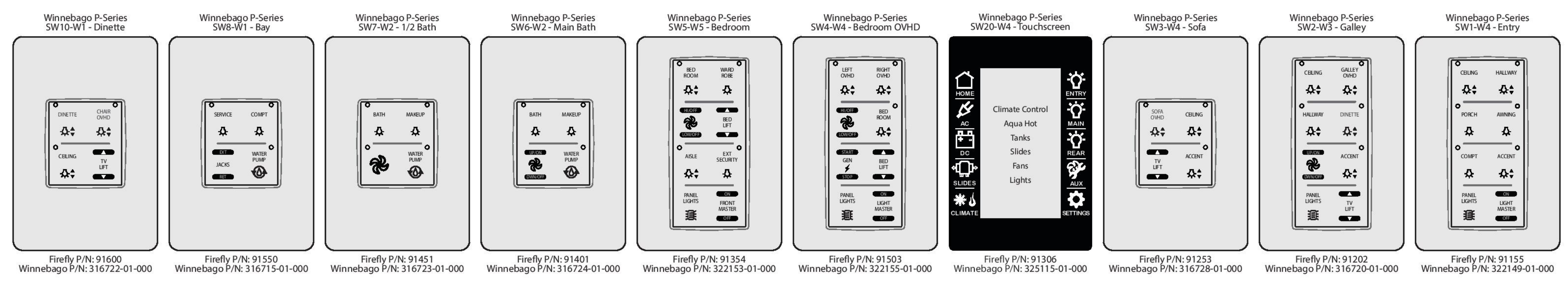
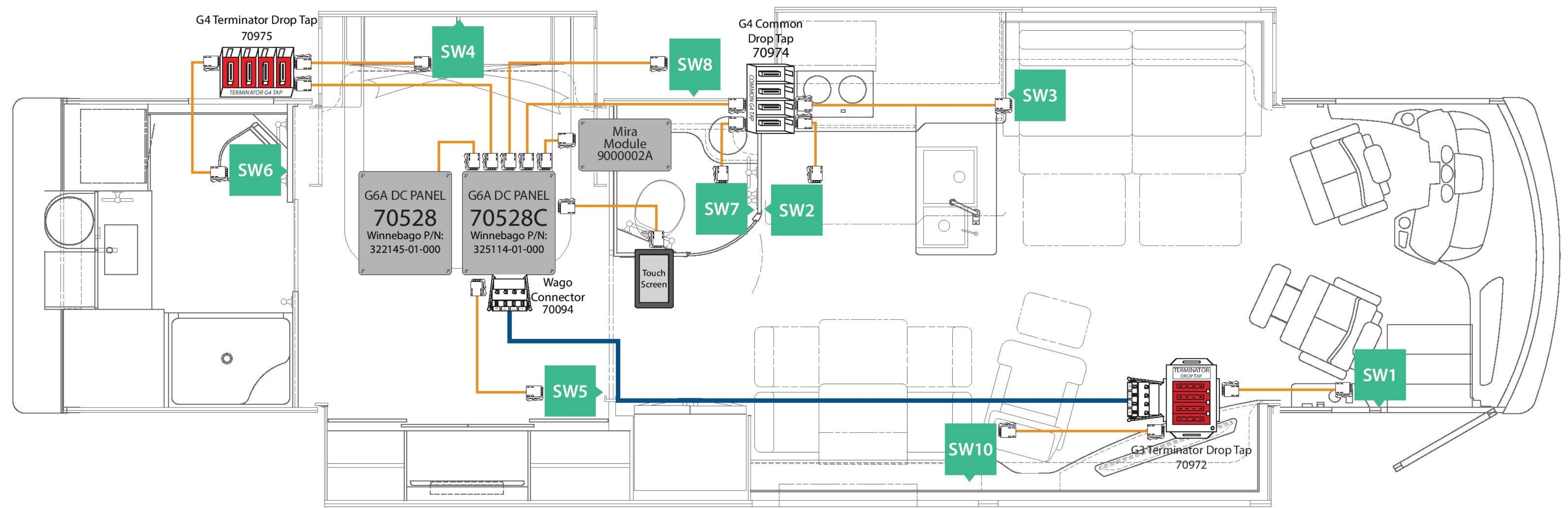


FOR ELECTRICAL TORQUE SPECIFICATIONS SEE DWG NO. 128783-01-000

FOR ELECTRICAL CALLOUTS SEE DWG NO. 121339-01-000

- 265 CODES/STANDARDS-CSA/CMVSS
- 1B1 CODES/STANDARDS USA

DESCRIPTION:		1B1 265	
WIRING INSTL-BODY, 12V			
SHEET:	ITEM/PART NO.:	REV	
9 of 10	000128896 / 32510001000		



KIT *: Firefly P/N: 90876AC
 Winnabago P/N: 325118-01-000
 * Kits may not include all components shown on print.

WINNEBAGO - P-Series V5 - P40J			DI: AD/MD	Network Legend	
Network Wiring Diagram and Switch Panel Layout			PI: AD/AA		
SSP-17 RVC (FW 6v7)	REV 5v2	09/18/17		Trunk Cable Drop Cable Switch Position	

1 LIGHT MASTER: ON: 1-17; OFF: 1-18,33,34,32,46
 FRONT MASTER (LIGHT): ON: 1-8,13,14,16,17; OFF: 1-8,13,14,16,17
 BEDROOM MASTER (LIGHT): ON: 9-12; OFF: 9-12,18

THIS SHEET FOR REFERENCE ONLY

FOR ELECTRICAL TORQUE SPECIFICATIONS SEE DWG NO. 128783-01-000

FOR ELECTRICAL CALLOUTS SEE DWG NO. 121339-01-000

265	CODES/STANDARDS-CSA/CMVSS
1B1	CODES/STANDARDS USA
1B1	265
DESCRIPTION: WIRING INSTL-BODY, 12V	
SHEET: 10 OF 10	ITEM/PART NO: 000128896 / 32510001000
REV	