

3 FAN-DEFROSTER
 154851-01-000
 TAPE-FOAM
 99069-01-000
 (120)(4)
 (45)(2)
 SCREW
 G11-08-12U (6)
 PANEL-PLENUM
 170841-04-CHT
 SCREW
 G39-10-12U (6)
 HOSE
 179183-01-000
 (650)
 ADAPTOR-HOSE
 171749-01-CHT (2)

6 TO SUNVISOR SHADE
 (6) BUTT SPLICES
 HHK-RED
 HHL-BLK
 HHM-RED
 HHN-BLK
 KE-YEL (2)

571 SPEAKER
 171547-01-CHT (2)
 SCREW
 G11-08-20U (8)
 57P SPEAKER
 193631-01-000 (3)
 SCREW
 G11-08-20U (12)

157 5 RADIO-KIT,SXM
 000111632 / 321635-01-000

38M MODULE-TPMS
 000028270 / 316211-01-000
 SCREW
 000G11-12-20U (2)
 CABLE ASM-TPMS MODULE
 000029306 / 316431-01-000

RECEPTACLE-12V
 111414-01-000
 DETAIL AA

PRLED-2
 SWITCH-ROCKER
 135740-01-CHT
 SWITCH-BASE,SINGLE
 135741-01-CHT
 SWITCH-BEZEL,SINGLE
 135742-01-CHT

WIRE ASM-IP,MAIN
 000128918 / 325106-01-000

6 PIN HOUSING
 TO LEFT MIRROR

PANEL ASM
 145063-08-CHT
 SCREW
 G67-06-10U (6)

BRACKET-RELAY PANEL
 145448-01-CHT
 SCREW
 G67-10-08U (4)

12V BREAKER PANEL
 DETAIL CA

DOOR ASM
 145066-03-CHT
 SCREW
 G67-06-10U (6)
 SCREW
 G67-10-08U (4)

7 AMPLIFIER-PREMIUM AUDIO,P
 000029137 / 312665-02-000
 SCREW
 G39-10-08U (4)
 WIRE ASM-AMP
 194217-01-000
 194217-02-000
 194217-03-000

BOX ASM WRAPPED,
 SPEAKER SUB WOOFER
 000161998 / 328515-01-XXX
 SCREW
 G11-10-16U (4)
 SPEAKER-8"
 193633-01-000
 WIRE ASM-PIGTAIL
 193633-04-000
 SCREW
 G11-10-12U (4)
 GRILL
 193633-02-000
 PLATE-SPEAKER
 194221-01-000 (2)
 SCREW
 G11-08-08U (8)
 SEAL
 185989-07-000
 (360 MM) (2)
 SCREW
 G11-10-12U (4)

SWITCH-BLANK
 138253-01-CHT
 SWITCH-BASE,SINGLE
 135741-01-CHT
 SWITCH-BEZEL,SINGLE
 135742-01-CHT

57P FOR ELECTRICAL
 TORQUE
 SPECIFICATIONS
 SEE DWG NO.
 128783-01-000

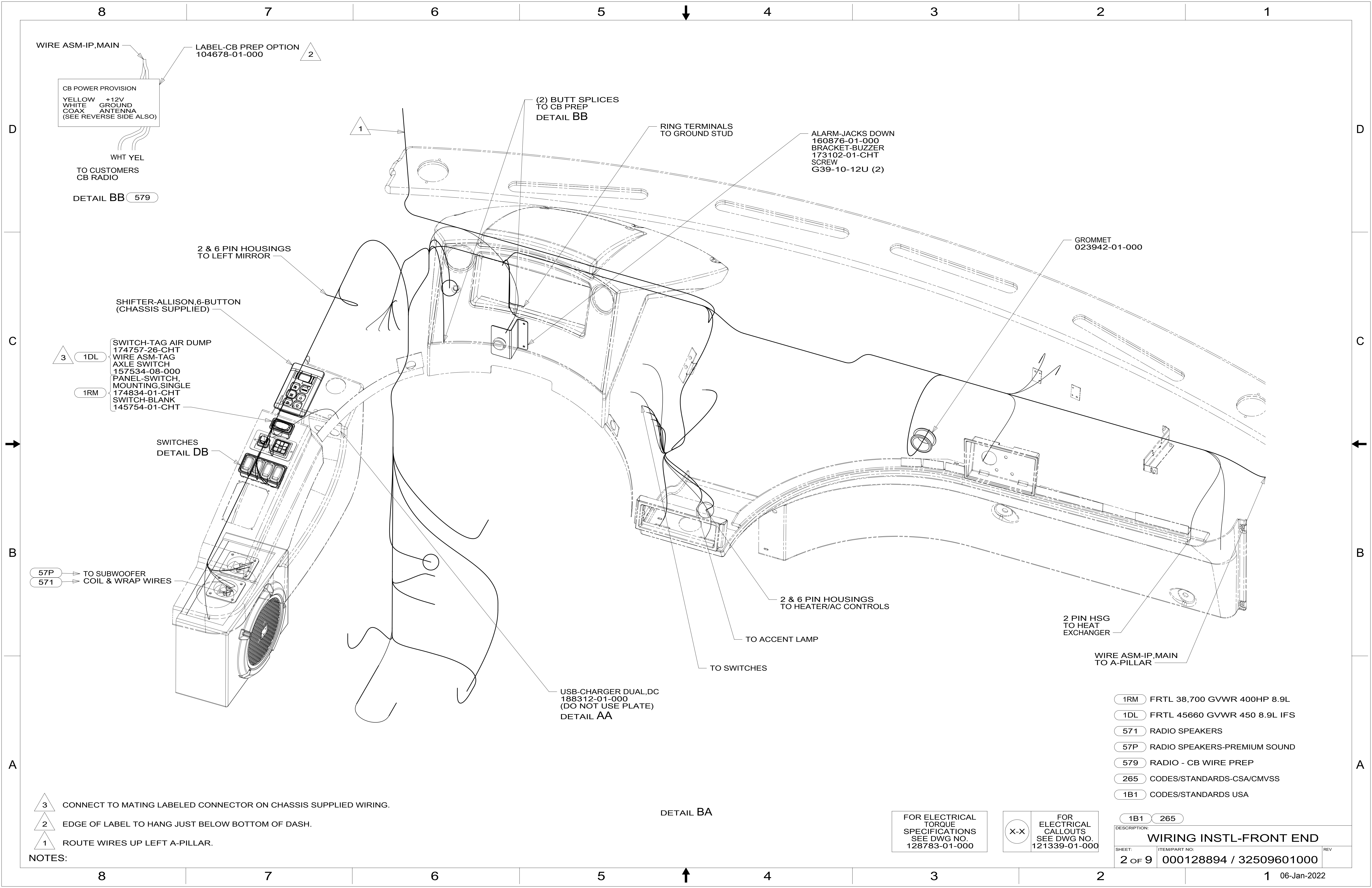
X-X FOR ELECTRICAL
 CALLOUTS
 SEE DWG NO.
 121339-01-000

- NOTES:
- CONNECT 2-12 PIN HSGS TO EACH OTHER WITHOUT 57P
 - CUT VISOR WIRING TO 300 MM BEFORE CONNECTING.
 - WIRE TIE SAT RECEIVER TO RADIO WIRING.
 - USE TAPE 8363-03-000 TO SECURE WIRES IN A-POST.
 - APPLY FOAM TAPE TO BOTTOM OF FAN TO SEAL FAN TO PANEL.
 - USE SEAL-TRIM 093305-01-CHT TO PROTECT WIRES FROM SHARP EDGES.
 - SEE WIRING INSTL-CHASSIS FOR ADDITIONAL INFORMATION.

- 157 INFOTAIN CTR/GPS SIRIUSXM
- 38M TIRE MONITORING SYSTEM
- 571 RADIO SPEAKERS
- 57P RADIO SPEAKERS-PREMIUM SOUND
- 265 CODES/STANDARDS-CSA/CMVSS
- 1B1 CODES/STANDARDS USA

WINNEBAGO
 COPYRIGHT 2016 WINNEBAGO INDUSTRIES, INC.

DSNR:	ALL DIMENSIONS ARE IN MILLIMETERS
DFFR:	
UNSPECIFIED TOLERANCES:	MATERIAL:
WHOLE DIM (X) : 3	
ONE-PLACE (X.X) : 1.5	
TWO-PLACE (X.XX) : 0.50	
ANGLE : 1°	
REFER TO ES0018 FOR FASTENER TIGHTENING GUIDELINES	WEIGHT: (LBS) FIRST USED:
	19 P-SER
DESCRIPTION: WIRING INSTL-FRONT END	
SHEET: 1 OF 9	ITEM/PART NO: 000128894 / 32509601000
REF:	1 06-Jan-2022



WIRE ASM-IP,MAIN

LABEL-CB PREP OPTION
104678-01-000

CB POWER PROVISION
YELLOW +12V
WHITE GROUND
COAX ANTENNA
(SEE REVERSE SIDE ALSO)

WHT YEL
TO CUSTOMERS
CB RADIO

DETAIL BB 579

(2) BUTT SPLICES
TO CB PREP
DETAIL BB

RING TERMINALS
TO GROUND STUD

ALARM-JACKS DOWN
160876-01-000
BRACKET-BUZZER
173102-01-CHT
SCREW
G39-10-12U (2)

GROMMET
023942-01-000

2 & 6 PIN HOUSINGS
TO LEFT MIRROR

SHIFTER-ALLISON 6-BUTTON
(CHASSIS SUPPLIED)

SWITCH-TAG AIR DUMP
174757-26-CHT
WIRE ASM-TAG
AXLE SWITCH
157534-08-000
PANEL-SWITCH,
MOUNTING, SINGLE
174834-01-CHT
SWITCH-BLANK
145754-01-CHT

SWITCHES
DETAIL DB

57P TO SUBWOOFER
571 COIL & WRAP WIRES

2 & 6 PIN HOUSINGS
TO HEATER/AC CONTROLS

TO ACCENT LAMP

TO SWITCHES

2 PIN HSG
TO HEAT
EXCHANGER

WIRE ASM-IP,MAIN
TO A-PILLAR

USB-CHARGER DUAL,DC
188312-01-000
(DO NOT USE PLATE)
DETAIL AA

- 1RM FRTL 38,700 GVWR 400HP 8.9L
- 1DL FRTL 45660 GVWR 450 8.9L IFS
- 571 RADIO SPEAKERS
- 57P RADIO SPEAKERS-PREMIUM SOUND
- 579 RADIO - CB WIRE PREP
- 265 CODES/STANDARDS-CSA/CMVSS
- 1B1 CODES/STANDARDS USA

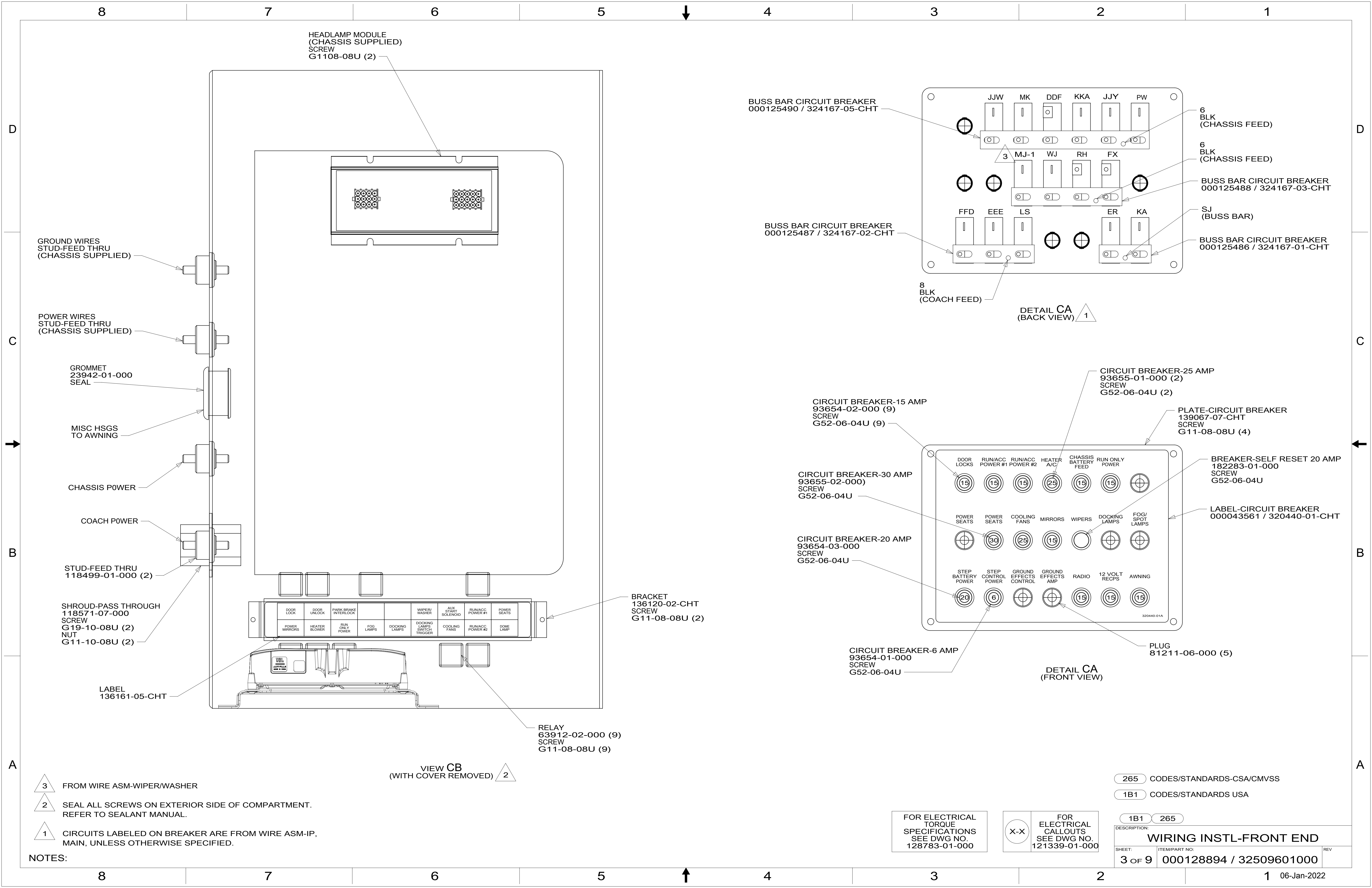
- NOTES:
- 3 CONNECT TO MATING LABELED CONNECTOR ON CHASSIS SUPPLIED WIRING.
 - 2 EDGE OF LABEL TO HANG JUST BELOW BOTTOM OF DASH.
 - 1 ROUTE WIRES UP LEFT A-PILLAR.

DETAIL BA

FOR ELECTRICAL
TORQUE
SPECIFICATIONS
SEE DWG NO.
128783-01-000

FOR ELECTRICAL
CALLOUTS
SEE DWG NO.
121339-01-000

DESCRIPTION:	1B1 265	
WIRING INSTL-FRONT END		
SHEET:	ITEM/PART NO:	REV
2 OF 9	000128894 / 32509601000	



HEADLAMP MODULE
(CHASSIS SUPPLIED)
SCREW
G1108-08U (2)

GROUND WIRES
STUD-FEED THRU
(CHASSIS SUPPLIED)

POWER WIRES
STUD-FEED THRU
(CHASSIS SUPPLIED)

GROMMET
23942-01-000
SEAL

MISC HSGS
TO AWNING

CHASSIS POWER

COACH POWER

STUD-FEED THRU
118499-01-000 (2)

SHROUD-PASS THROUGH
118571-07-000
SCREW
G19-10-08U (2)
NUT
G11-10-08U (2)

LABEL
136161-05-CHT

RELAY
63912-02-000 (9)
SCREW
G11-08-08U (9)

BRACKET
136120-02-CHT
SCREW
G11-08-08U (2)

VIEW CB
(WITH COVER REMOVED) 2

BUSS BAR CIRCUIT BREAKER
000125490 / 324167-05-CHT

BUSS BAR CIRCUIT BREAKER
000125487 / 324167-02-CHT

6
BLK
(CHASSIS FEED)

6
BLK
(CHASSIS FEED)

BUSS BAR CIRCUIT BREAKER
000125488 / 324167-03-CHT

SJ
(BUSS BAR)

BUSS BAR CIRCUIT BREAKER
000125486 / 324167-01-CHT

8
BLK
(COACH FEED)

DETAIL CA
(BACK VIEW) 1

CIRCUIT BREAKER-15 AMP
93654-02-000 (9)
SCREW
G52-06-04U (9)

CIRCUIT BREAKER-30 AMP
93655-02-000
SCREW
G52-06-04U

CIRCUIT BREAKER-20 AMP
93654-03-000
SCREW
G52-06-04U

CIRCUIT BREAKER-25 AMP
93655-01-000 (2)
SCREW
G52-06-04U (2)

PLATE-CIRCUIT BREAKER
139067-07-CHT
SCREW
G11-08-08U (4)

BREAKER-SELF RESET 20 AMP
182283-01-000
SCREW
G52-06-04U

LABEL-CIRCUIT BREAKER
000043561 / 320440-01-CHT

CIRCUIT BREAKER-6 AMP
93654-01-000
SCREW
G52-06-04U

DETAIL CA
(FRONT VIEW)

PLUG
81211-06-000 (5)

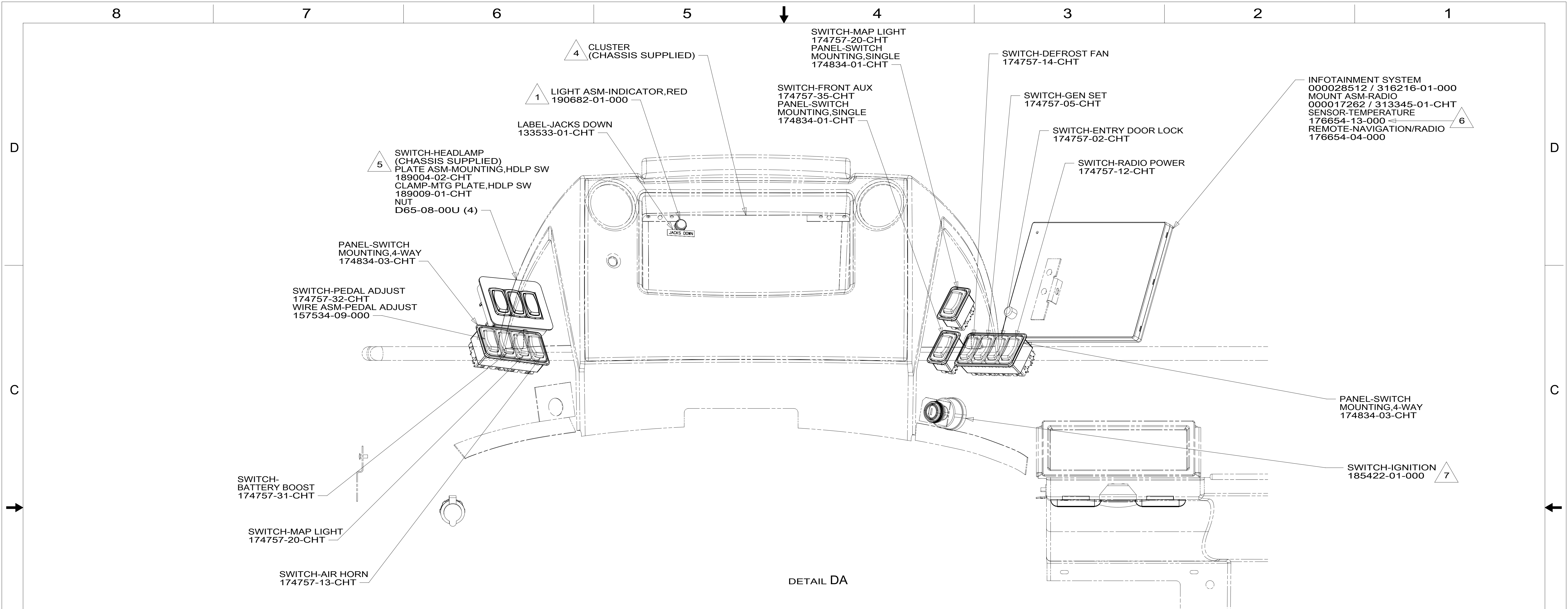
- NOTES:
- 3 FROM WIRE ASM-WIPER/WASHER
 - 2 SEAL ALL SCREWS ON EXTERIOR SIDE OF COMPARTMENT. REFER TO SEALANT MANUAL.
 - 1 CIRCUITS LABELED ON BREAKER ARE FROM WIRE ASM-IP, MAIN, UNLESS OTHERWISE SPECIFIED.

FOR ELECTRICAL
TORQUE
SPECIFICATIONS
SEE DWG NO.
128783-01-000

FOR
ELECTRICAL
CALLOUTS
SEE DWG NO.
121339-01-000

- 265 CODES/STANDARDS-CSA/CMVSS
- 1B1 CODES/STANDARDS USA

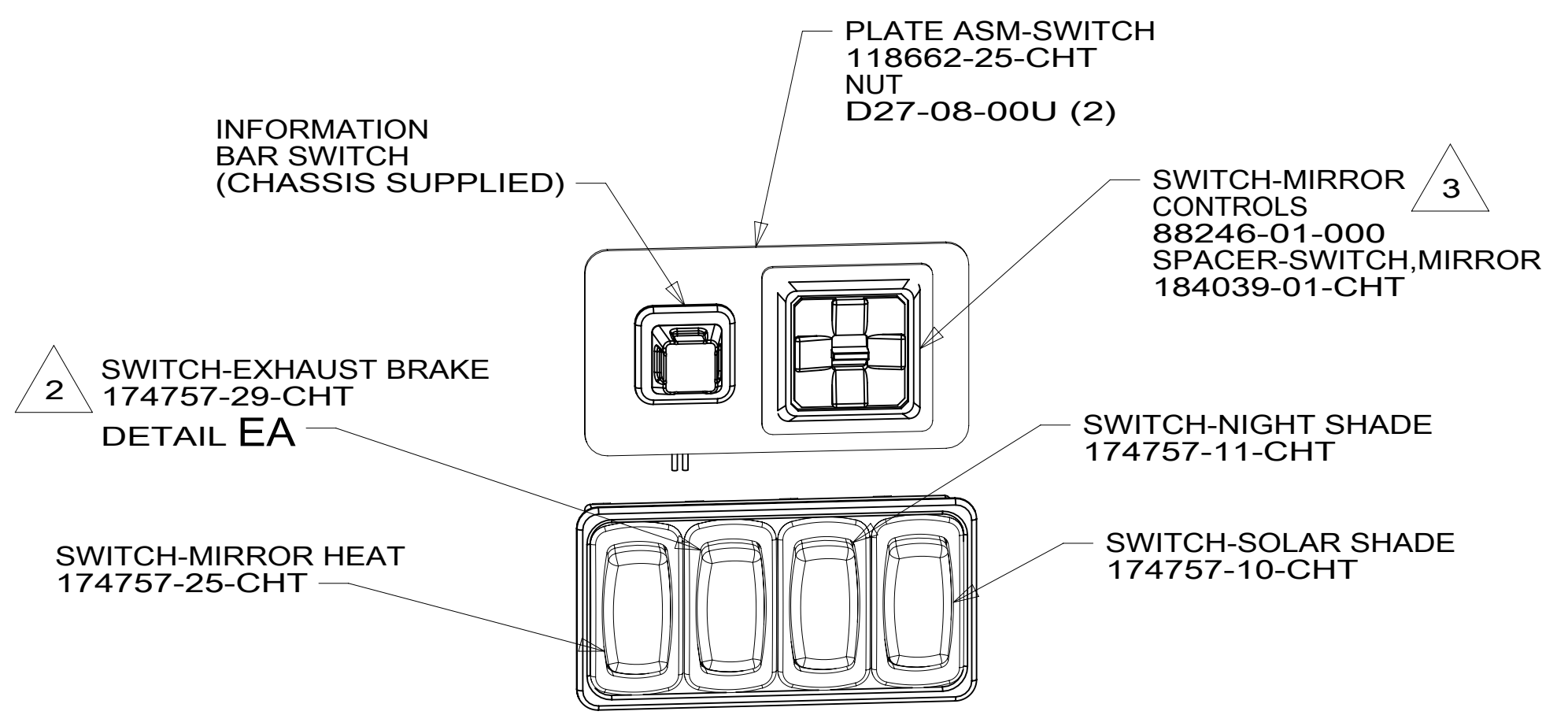
DESCRIPTION: WIRING INSTL-FRONT END	
SHEET: 3 OF 9	ITEM/PART NO: 000128894 / 32509601000
REV 06-Jan-2022	



DETAIL DA

8. APPLY TAPE 8363-01-000 AS NECESSARY TO SECURE NON-LOCKING CONNECTIONS.
- 7 REMOVE AND REPLACE CHASSIS SUPPLIED IGNITION SWITCH.
- 6 ROUTE TEMP SENSOR THRU HOLE IN BULKHEAD TO BRACKET (SEE SHEET 6).
- 5 CHASSIS SUPPLIED ROCKER SWITCHES. DOME LAMP SWITCH NOT USED. SEE DETAIL DC FOR SWITCH POSITION.
- 4 SEE SHEET 5 FOR GAUGE PLACEMENT.
- 3 MOUNT SWITCH SO WHEN ACTUATOR IS PUSHED LEFT, THE LETTER L IS SHOWING.
- 2 CONNECT TO MATING LABELED CONNECTOR ON CHASSIS SUPPLIED WIRING.
- 1 CONNECT POSITIVE WIRE TO TERMINAL MARKED WITH RED, YEL-WINNEBAGO WIRING RED-HWH WIRING

NOTES:



DETAIL DB



DETAIL DC

FOR ELECTRICAL TORQUE SPECIFICATIONS SEE DWG NO. 128783-01-000

FOR ELECTRICAL CALLOUTS SEE DWG NO. 121339-01-000

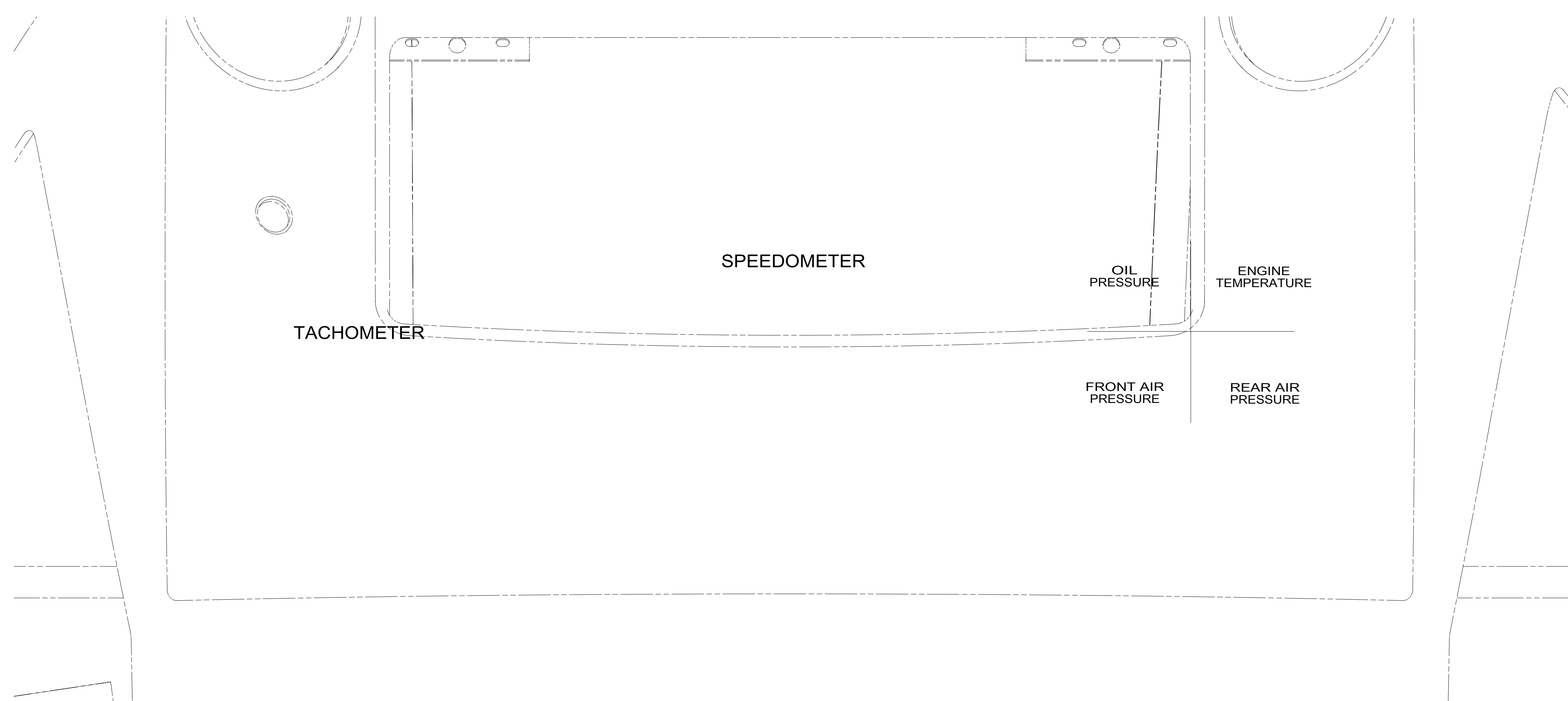
- 265 CODES/STANDARDS-CSA/CMVSS
- 1B1 CODES/STANDARDS USA

DESCRIPTION: WIRING INSTL-FRONT END		
SHEET: 4 OF 9	ITEM/PART NO: 000128894 / 32509601000	REV

8 7 6 5 4 3 2 1

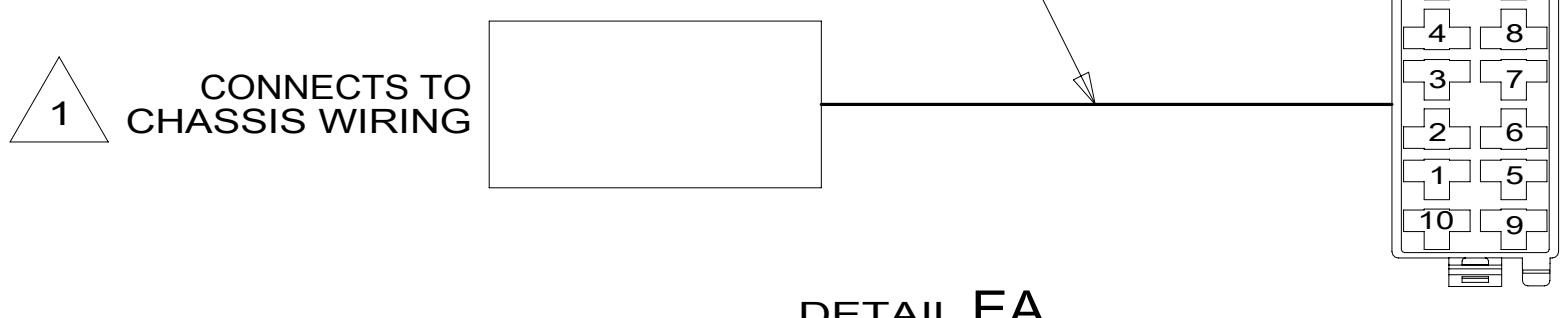
D
C
B
A

D
C
B
A



FREIGHTLINER CLUSTER LOCATION

WIRE ASM-EXHAUST BRAKE SWITCH
000026468 / 315655-01-000



DETAIL EA

1 CHASSIS WIRING HAS MATING CONNECTOR AND IS LABELED "ENGINE BRAKE SWITCH"

NOTES:

FOR ELECTRICAL TORQUE SPECIFICATIONS SEE DWG NO. 128783-01-000

FOR ELECTRICAL CALLOUTS SEE DWG NO. 121339-01-000

- 265 CODES/STANDARDS-CSA/CMVSS
- 1B1 CODES/STANDARDS USA

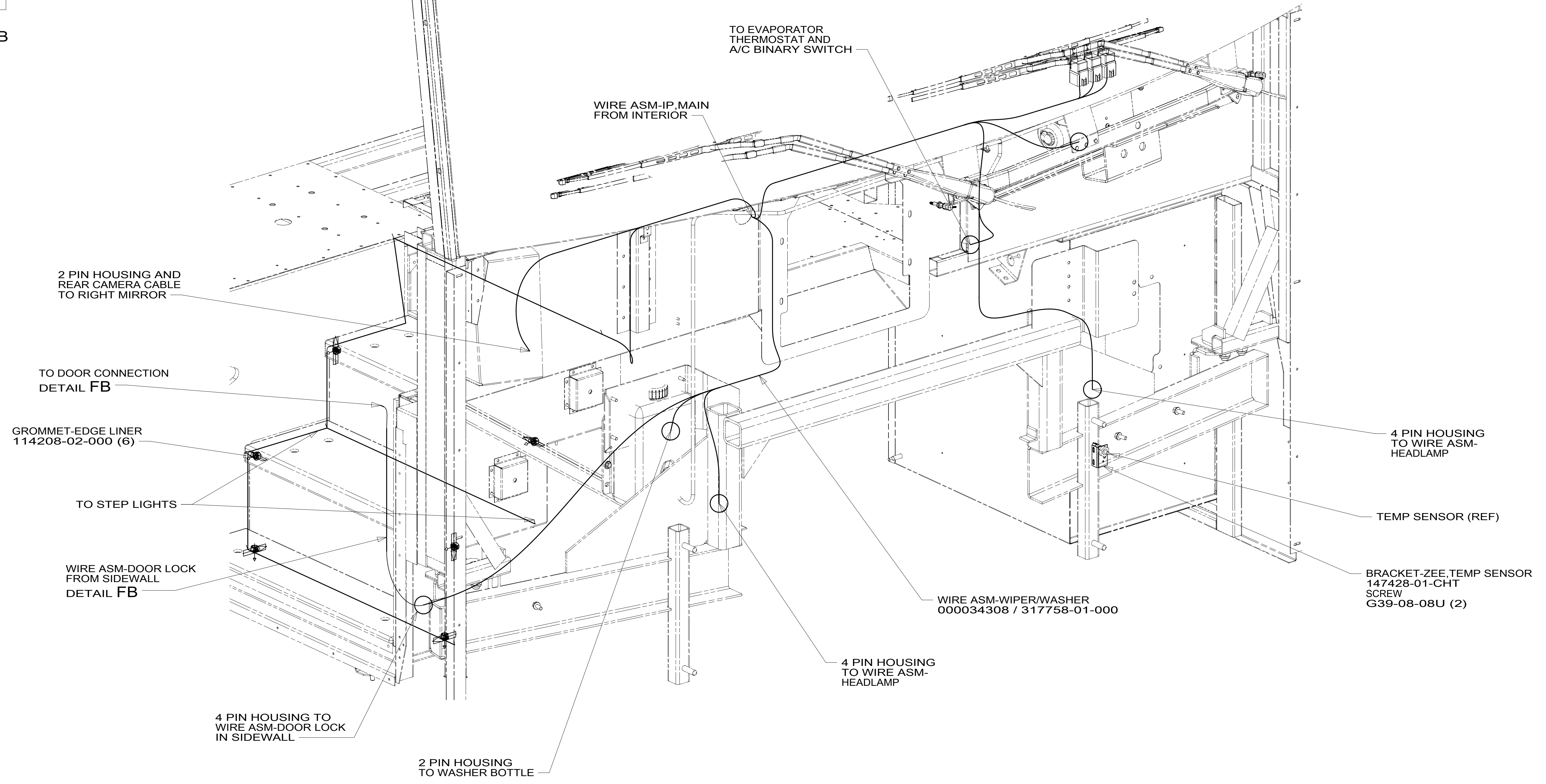
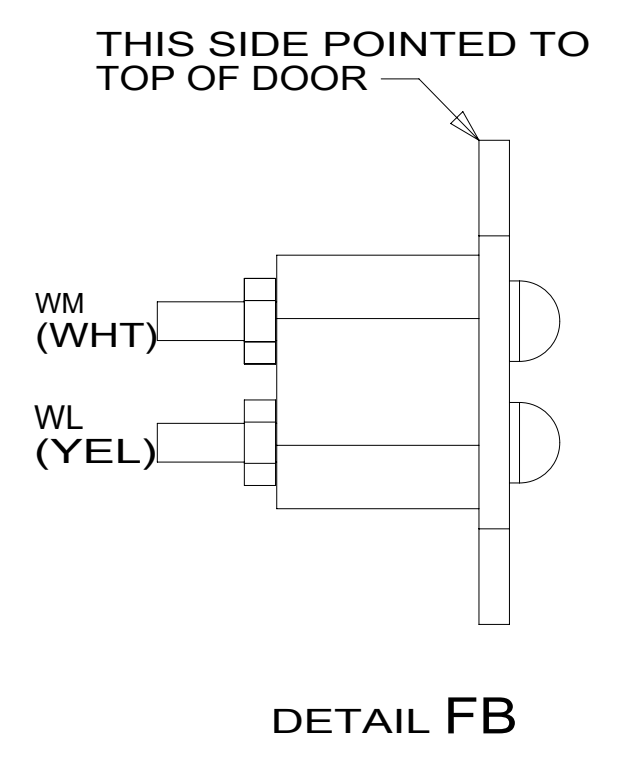
1B1 265

DESCRIPTION:
WIRING INSTL-FRONT END

SHEET: 5 OF 9 ITEM/PART NO: 000128894 / 32509601000 REV

8 7 6 5 4 3 2 1 06-Jan-2022

8 7 6 5 4 3 2 1



VIEW FA

265 CODES/STANDARDS-CSA/CMVSS

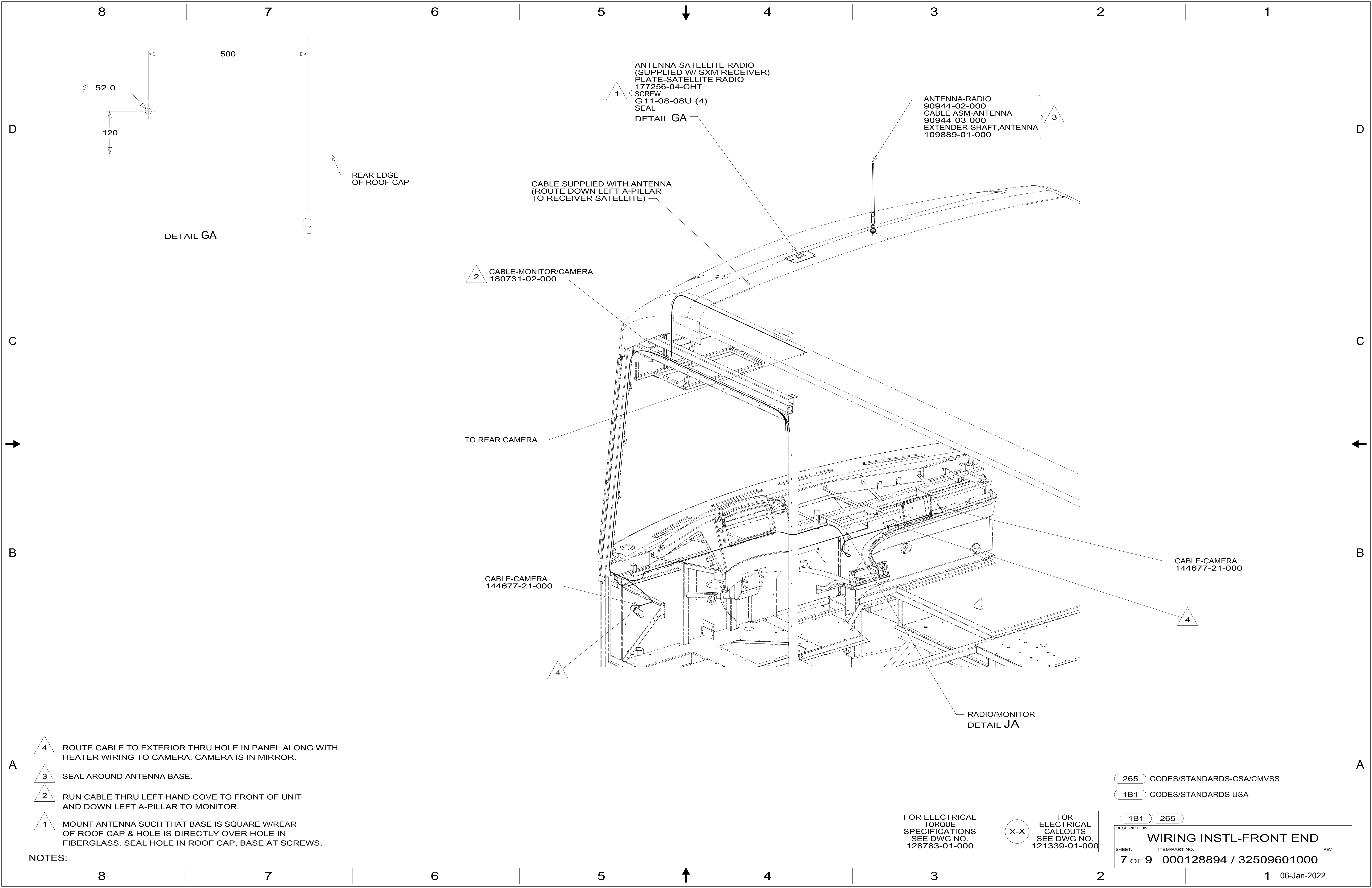
1B1 CODES/STANDARDS USA

FOR ELECTRICAL TORQUE SPECIFICATIONS SEE DWG NO. 128783-01-000

FOR ELECTRICAL CALLOUTS SEE DWG NO. 121339-01-000

DESCRIPTION:	1B1 265	
WIRING INSTL-FRONT END		
SHEET:	ITEM/PART NO:	REV
6 OF 9	000128894 / 32509601000	

8 7 6 5 4 3 2 1 06-Jan-2022



1 ANTENNA-SATELLITE RADIO
(SUPPLIED W/ SXM RECEIVER)
PLATE-SATELLITE RADIO
177256-04-CHT
SCREW
G11-08-08U (4)
SEAL
DETAIL GA

3 ANTENNA-RADIO
90944-02-000
CABLE ASM-ANTENNA
90944-03-000
EXTENDER-SHAFT,ANTENNA
109889-01-000

CABLE SUPPLIED WITH ANTENNA
(ROUTE DOWN LEFT A-PILLAR
TO RECEIVER SATELLITE)

2 CABLE-MONITOR/CAMERA
180731-02-000

TO REAR CAMERA

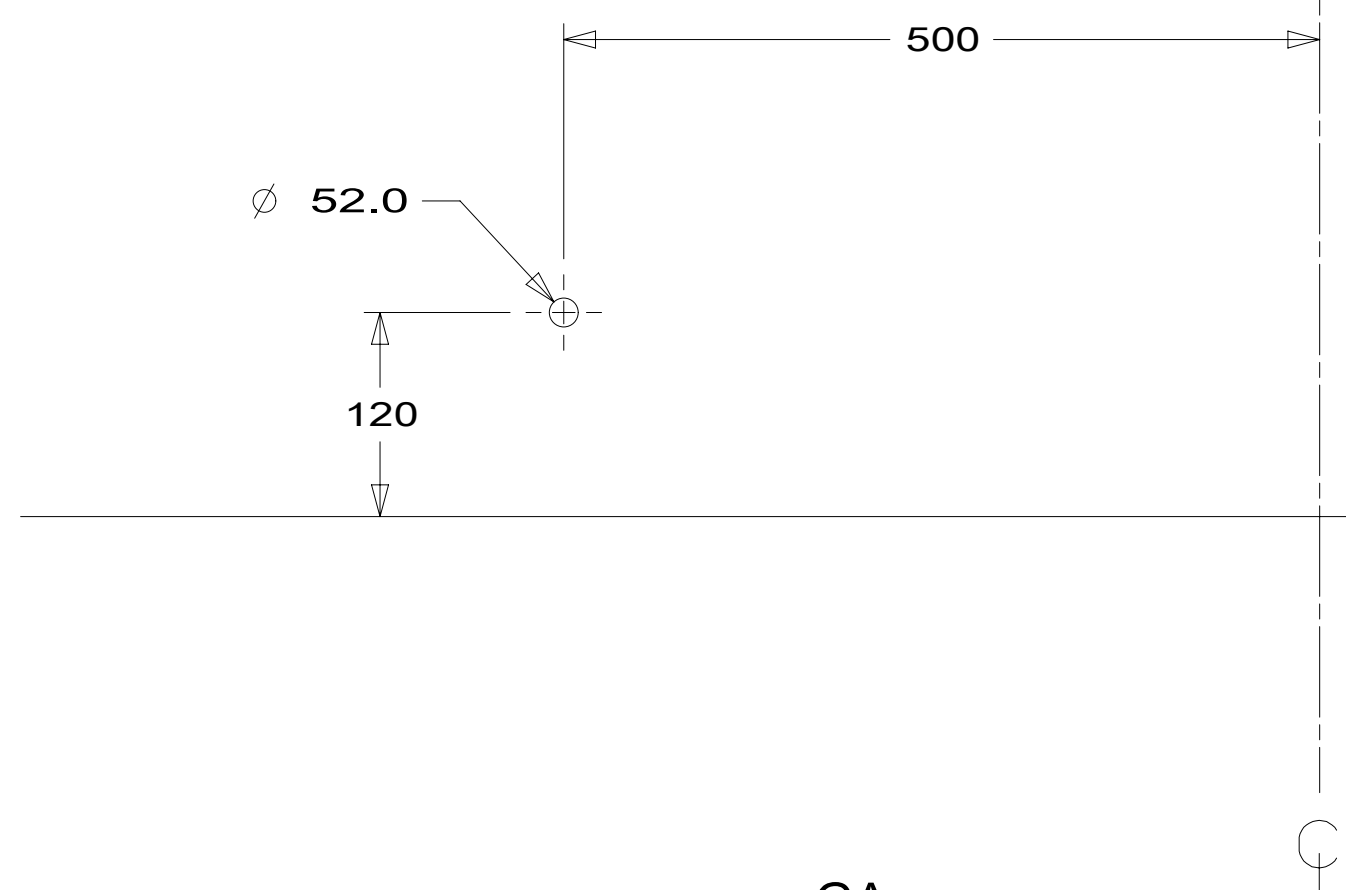
CABLE-CAMERA
144677-21-000

CABLE-CAMERA
144677-21-000

RADIO/MONITOR
DETAIL JA

DETAIL GA

REAR EDGE
OF ROOF CAP



- NOTES:
- 4 ROUTE CABLE TO EXTERIOR THRU HOLE IN PANEL ALONG WITH HEATER WIRING TO CAMERA. CAMERA IS IN MIRROR.
 - 3 SEAL AROUND ANTENNA BASE.
 - 2 RUN CABLE THRU LEFT HAND COVE TO FRONT OF UNIT AND DOWN LEFT A-PILLAR TO MONITOR.
 - 1 MOUNT ANTENNA SUCH THAT BASE IS SQUARE W/REAR OF ROOF CAP & HOLE IS DIRECTLY OVER HOLE IN FIBERGLASS. SEAL HOLE IN ROOF CAP, BASE AT SCREWS.

265 CODES/STANDARDS-CSA/CMVSS

1B1 CODES/STANDARDS USA

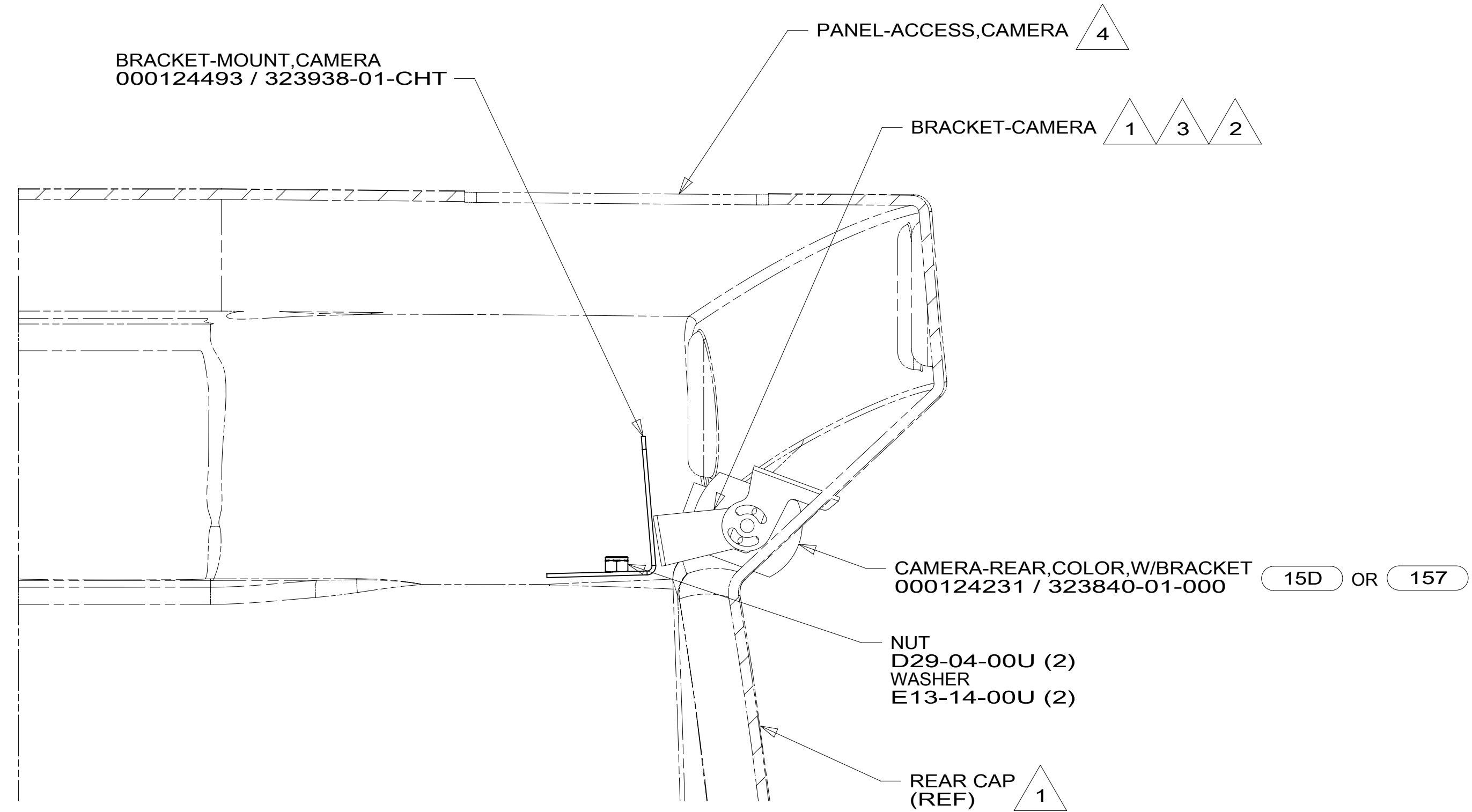
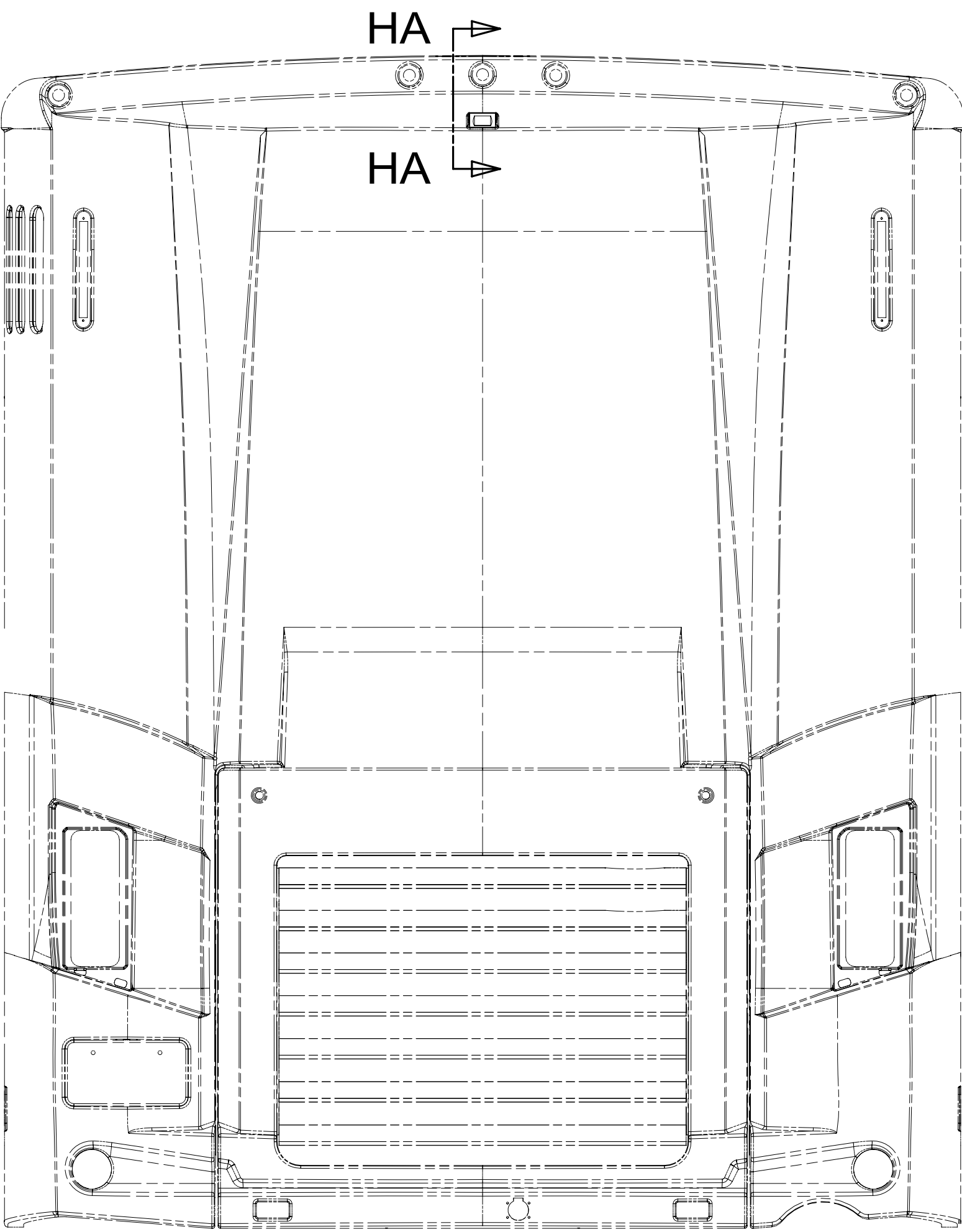
1B1 265

FOR ELECTRICAL
TORQUE
SPECIFICATIONS
SEE DWG NO.
128783-01-000

FOR
ELECTRICAL
CALLOUTS
SEE DWG NO.
121339-01-000

DESCRIPTION:
WIRING INSTL-FRONT END

SHEET: 7 OF 9 ITEM/PART NO: 000128894 / 32509601000 REV



SECTION HA-HA

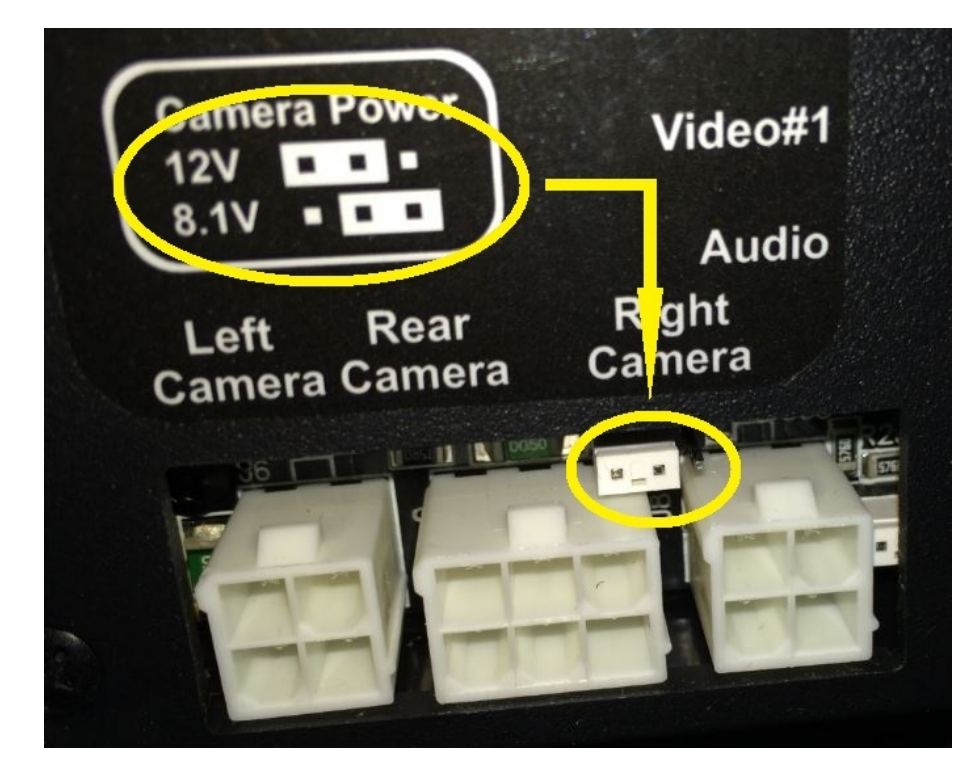
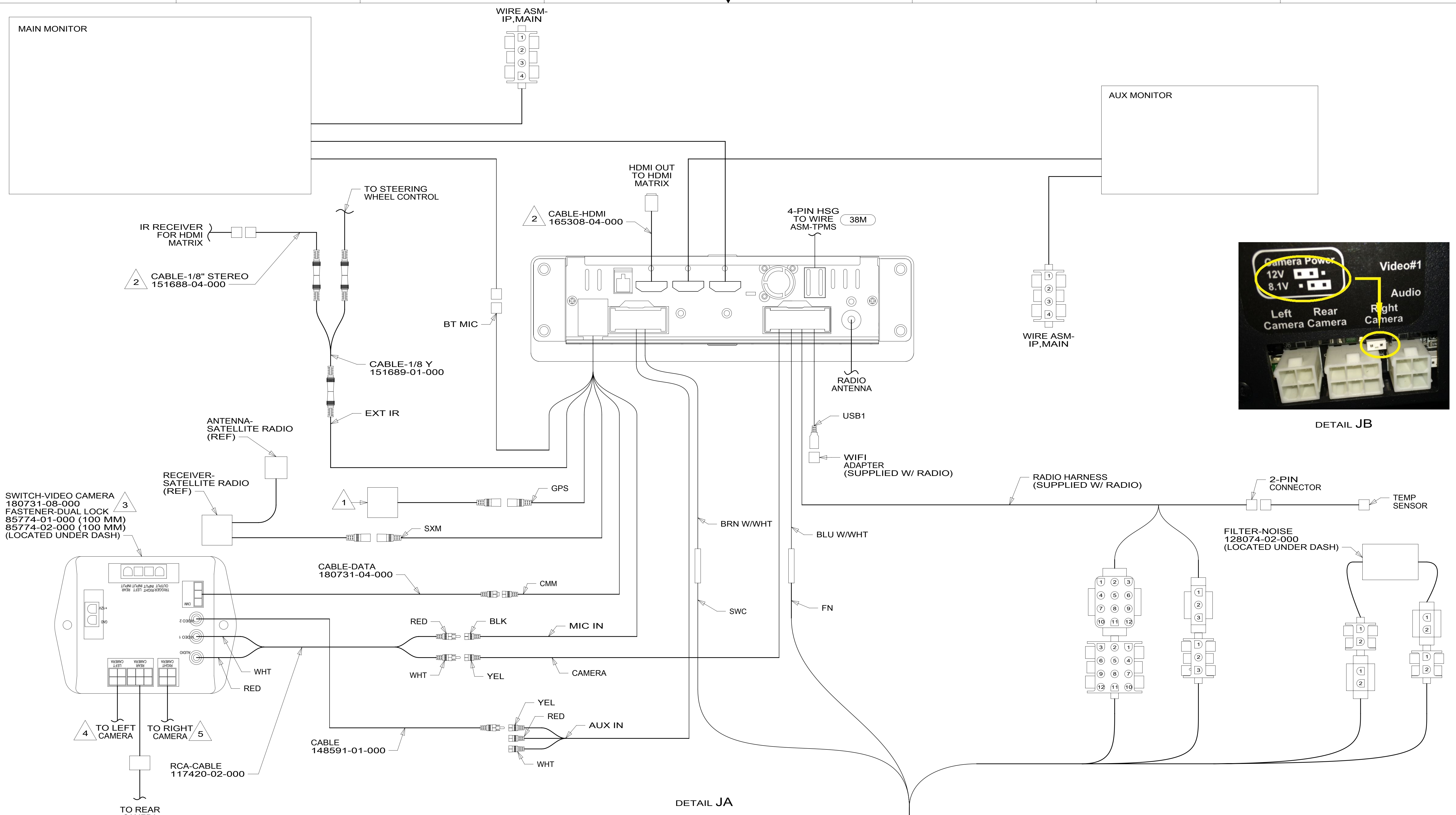
- NOTES:
- 4 SEE PANEL-REAR CAP FOR LOCATION.
 - 3 ALIGN CAMERA IN CENTER OF OPENING AND ADJUST CAMERA VIEWING SO BACKWALL IS JUST VISIBLE IN MONITOR.
 - 2 APPLY TAPE 180131-01-CHT TO SEAL CAMERA CONNECTOR, THEN COVER WITH TAPE 8363-01-000 WITH 157
 - 1 PARTS SUPPLIED WITH REAR CAMERA

- 15D INFOTAINMENT CENTER/GPS
- 157 INFOTAIN CTR/GPS SIRIUSXM
- 265 CODES/STANDARDS-CSA/CMVSS
- 1B1 CODES/STANDARDS USA

FOR ELECTRICAL TORQUE SPECIFICATIONS SEE DWG NO. 128783-01-000

FOR ELECTRICAL CALLOUTS SEE DWG NO. 121339-01-000

DESCRIPTION:	
WIRING INSTL-FRONT END	
SHEET:	ITEM/PART NO. REV
8 OF 9	000128894 / 32509601000



DETAIL JB

DETAIL JA

- NOTES:
- 3 ENSURE CAMERA POWER JUMPER IS IN 12 VOLT POSITION. MOVE TO 12 VOLT POSITION IF NECESSARY. SEE DETAIL JB.
 - 2 ROUTE UP RIGHT A-POST.
 - 1 MOUNT TO DEFROST PLENUM NEAR WINDSHIELD.

- 6. APPLY TAPE 8363-01-000 AS NECESSARY TO SECURE NON-LOCKING CONNECTIONS.
- 5 MARK RIGHT CABLE WITH WHITE TAPE 900000-08-000 NEXT TO CONNECTOR.
- 4 MARK LEFT CABLE WITH YELLOW TAPE 900000-07-000 NEXT TO CONNECTOR.

FOR ELECTRICAL TORQUE SPECIFICATIONS SEE DWG NO. 128783-01-000

FOR ELECTRICAL CALLOUTS SEE DWG NO. 121339-01-000

- 38M TIRE MONITORING SYSTEM
- 265 CODES/STANDARDS-CSA/CMVSS
- 1B1 CODES/STANDARDS USA

DESCRIPTION:		1B1 265	
WIRING INSTL-FRONT END			
SHEET:	ITEM/PART NO.:	REV	
9 OF 9	000128894 / 32509601000		