

**NOTES:**

1. AT MINIMUM ALL WIRES TO BE SUPPORTED AND SECURED PER CODE REQUIREMENTS. USE CLAMP 10495 OR 10497 OR WIRE TIE 8343 OR 108046 AND SCREW G67-XX-XXX OR G56-XX-XXX AS APPROPRIATE FOR INSTALLATION.

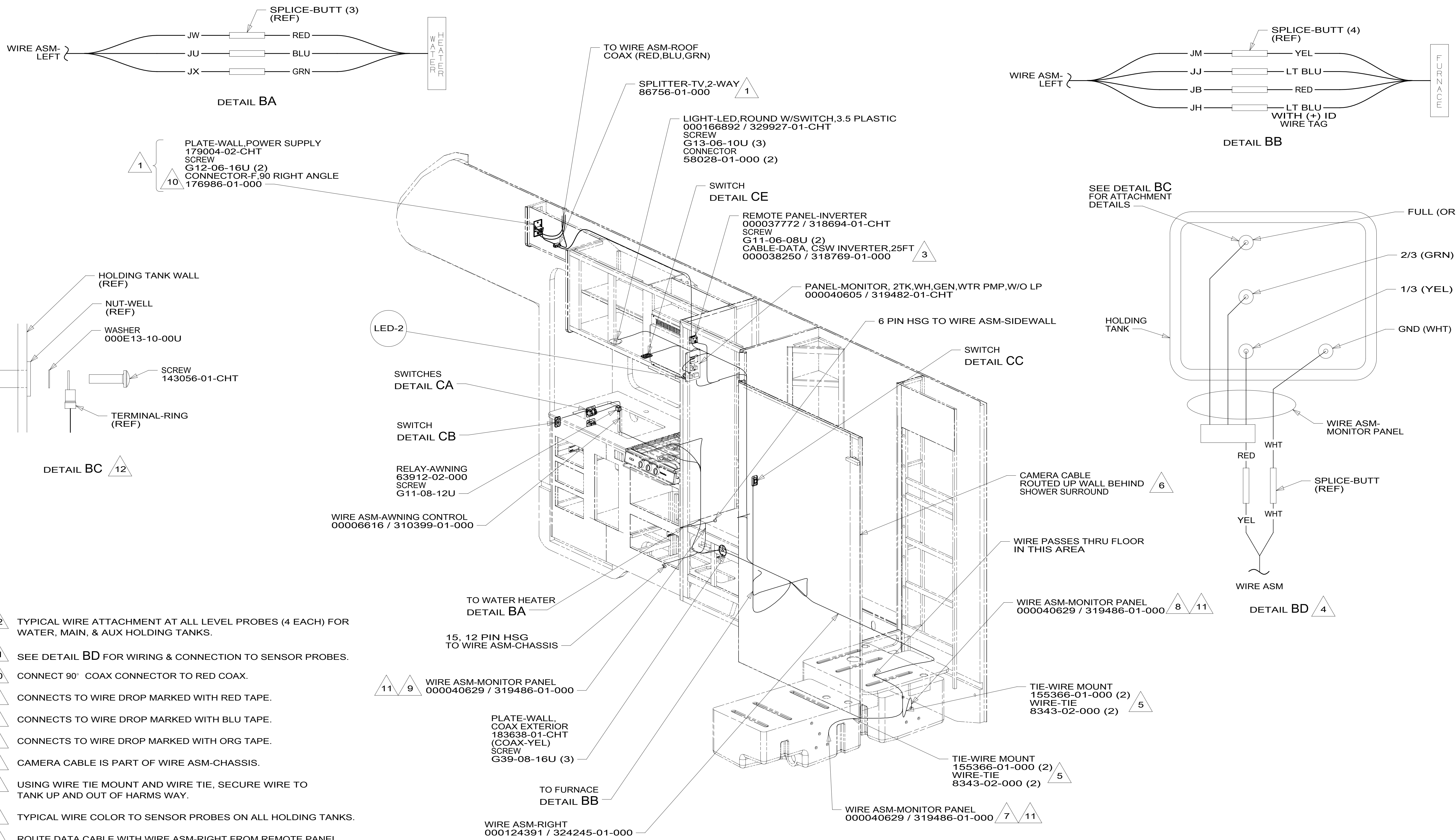
FOR ELECTRICAL TORQUE SPECIFICATIONS SEE DWG NO. 128783-01-000

FOR ELECTRICAL CALLOUTS SEE DWG NO. 121339-01-000

- 265 CODES/STANDARDS-CSA/CMVSS
- 1B1 CODES/STANDARDS USA
- 1B1 265

**WINNEBAGO**  
COPYRIGHT 2016 WINNEBAGO INDUSTRIES, INC.

|  |  |                            |
|--|--|----------------------------|
| DSNR:  | ALL DIMENSIONS ARE IN MILLIMETERS            |                            |
| DFFR:  |  |                            |
| UNSPECIFIED TOLERANCES:                            | MATERIAL:                                    |                            |
| WHOLE DIM (X) : 3                                  |  |                            |
| ONE-PLACE (X.X) : 1.5                              |  |                            |
| TWO-PLACE (X.XX) : 0.50                            |  |                            |
| ANGLE : 1°   |  |                            |
| REFER TO ES0018 FOR FASTENER TIGHTENING GUIDELINES | WEIGHT: (LBS)                                | FIRST USED: <b>19 922E</b> |
| <b>DESCRIPTION:</b>                                |  |                            |
| <b>WIRING INSTL-BODY, 12V</b>                      |  |                            |
| SHEET: <b>1 OF 4</b>                               | ITEM/PART NO: <b>000127912 / 32499001000</b> | REV:                       |
| REF:   |  | <b>1 16-Nov-2018</b>       |



- 12 TYPICAL WIRE ATTACHMENT AT ALL LEVEL PROBES (4 EACH) FOR WATER, MAIN, & AUX HOLDING TANKS.
- 11 SEE DETAIL BD FOR WIRING & CONNECTION TO SENSOR PROBES.
- 10 CONNECT 90° COAX CONNECTOR TO RED COAX.
- 9 CONNECTS TO WIRE DROP MARKED WITH RED TAPE.
- 8 CONNECTS TO WIRE DROP MARKED WITH BLU TAPE.
- 7 CONNECTS TO WIRE DROP MARKED WITH ORG TAPE.
- 6 CAMERA CABLE IS PART OF WIRE ASM-CHASSIS.
- 5 USING WIRE TIE MOUNT AND WIRE TIE, SECURE WIRE TO TANK UP AND OUT OF HARMS WAY.
- 4 TYPICAL WIRE COLOR TO SENSOR PROBES ON ALL HOLDING TANKS.
- 3 ROUTE DATA CABLE WITH WIRE ASM-RIGHT FROM REMOTE PANEL TO INVERTER.

2. AT MINIMUM ALL WIRES TO BE SUPPORTED AND SECURED PER CODE REQUIREMENTS. USE CLAMP 10495 OR 10497 OR WIRE TIE 8343 OR 108046 AND SCREW G67-XX-XXX OR G56-XX-XXX AS APPROPRIATE FOR INSTALLATION.

1 SEE WIRING INSTL-A/V, FRONT FOR ADDITIONAL INFORMATION.

NOTES:

265 CODES/STANDARDS-CSA/CMVSS  
 1B1 CODES/STANDARDS USA

FOR ELECTRICAL TORQUE SPECIFICATIONS SEE DWG NO. 128783-01-000

FOR ELECTRICAL CALLOUTS SEE DWG NO. 121339-01-000

|   |  |     |
|---|--|-----|
| DESCRIPTION:<br><b>WIRING INSTL-BODY, 12V</b> |  |     |
| SHEET:<br>2 OF 4                              | ITEM/PART NO:<br>000127912 / 32499001000 | REV |
| 16-Nov-2018                                   |  |     |

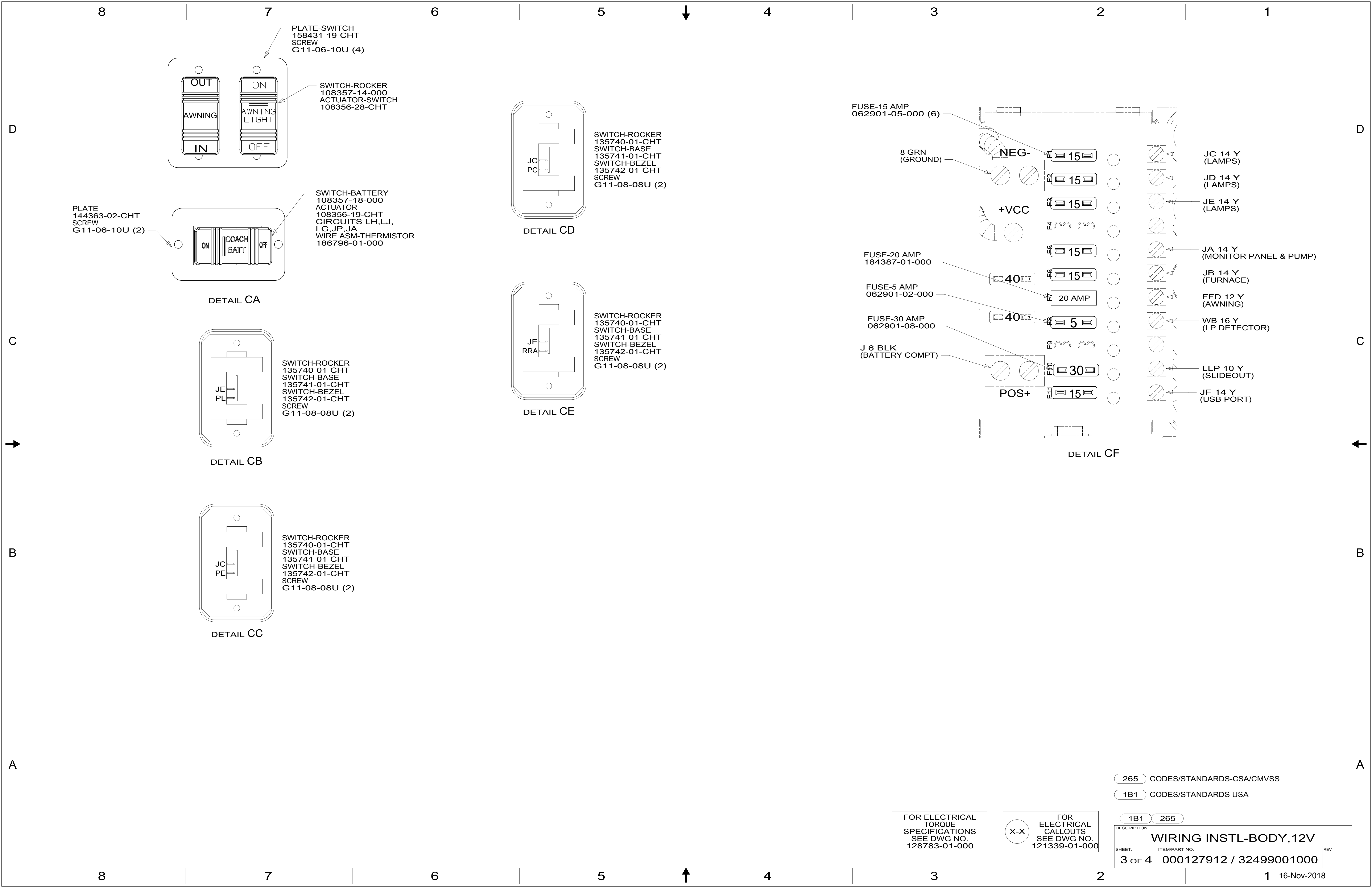
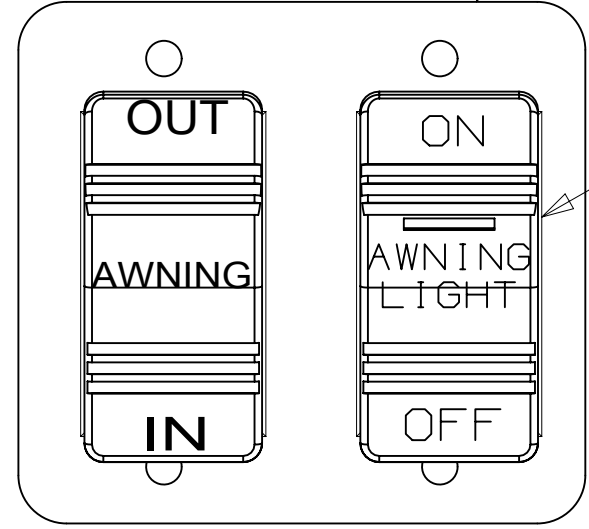
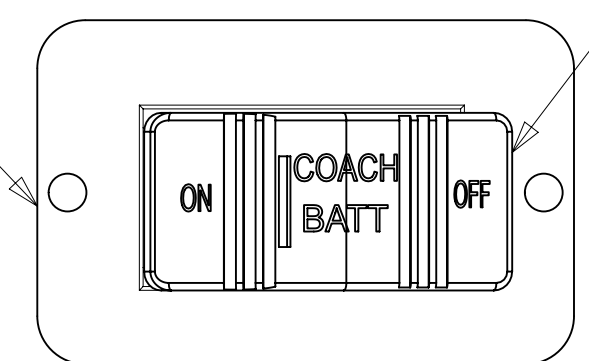


PLATE- SWITCH  
158431-19-CHT  
SCREW  
G11-06-10U (4)



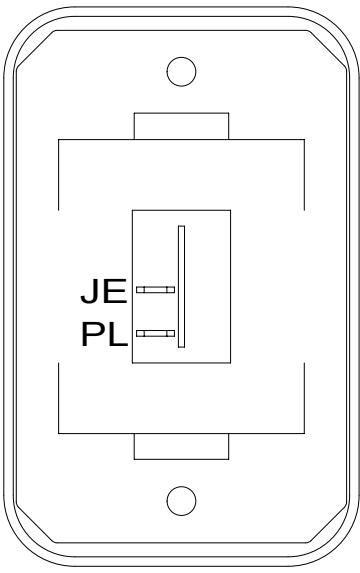
SWITCH-ROCKER  
108357-14-000  
ACTUATOR-SWITCH  
108356-28-CHT

PLATE  
144363-02-CHT  
SCREW  
G11-06-10U (2)



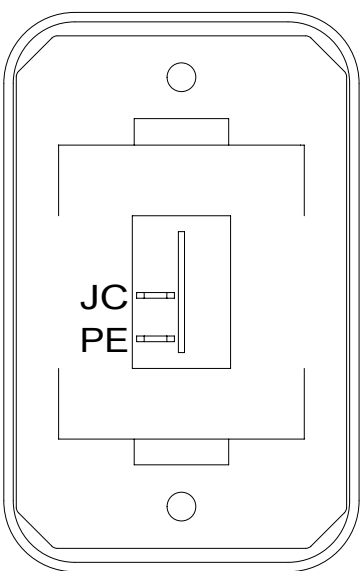
SWITCH-BATTERY  
108357-18-000  
ACTUATOR  
108356-19-CHT  
CIRCUITS LH,LJ,  
LG,JP,JA  
WIRE ASM-THERMISTOR  
186796-01-000

DETAIL CA



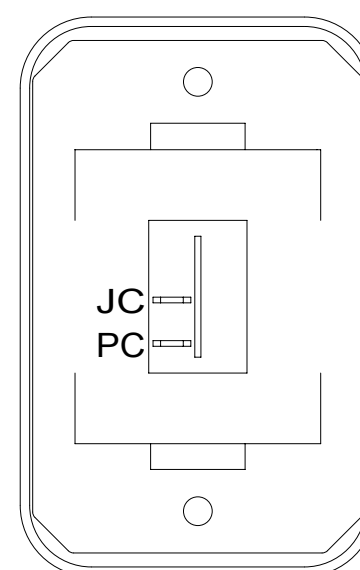
SWITCH-ROCKER  
135740-01-CHT  
SWITCH-BASE  
135741-01-CHT  
SWITCH-BEZEL  
135742-01-CHT  
SCREW  
G11-08-08U (2)

DETAIL CB



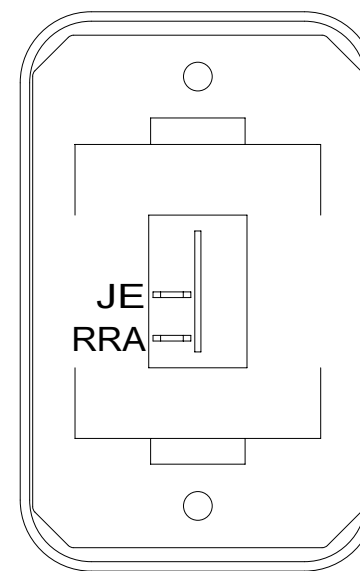
SWITCH-ROCKER  
135740-01-CHT  
SWITCH-BASE  
135741-01-CHT  
SWITCH-BEZEL  
135742-01-CHT  
SCREW  
G11-08-08U (2)

DETAIL CC



SWITCH-ROCKER  
135740-01-CHT  
SWITCH-BASE  
135741-01-CHT  
SWITCH-BEZEL  
135742-01-CHT  
SCREW  
G11-08-08U (2)

DETAIL CD



SWITCH-ROCKER  
135740-01-CHT  
SWITCH-BASE  
135741-01-CHT  
SWITCH-BEZEL  
135742-01-CHT  
SCREW  
G11-08-08U (2)

DETAIL CE

FUSE-15 AMP  
062901-05-000 (6)

8 GRN  
(GROUND)

NEG-

+VCC

FUSE-20 AMP  
184387-01-000

FUSE-5 AMP  
062901-02-000

FUSE-30 AMP  
062901-08-000

J 6 BLK  
(BATTERY COMPT)

POS+

DETAIL CF

JC 14 Y  
(LAMPS)

JD 14 Y  
(LAMPS)

JE 14 Y  
(LAMPS)

JA 14 Y  
(MONITOR PANEL & PUMP)

JB 14 Y  
(FURNACE)

FFD 12 Y  
(AWNING)

WB 16 Y  
(LP DETECTOR)

LLP 10 Y  
(SLIDEOUT)

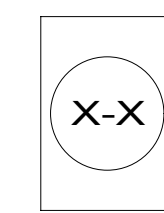
JF 14 Y  
(USB PORT)

265 CODES/STANDARDS-CSA/CMVSS

1B1 CODES/STANDARDS USA

1B1 265

FOR ELECTRICAL  
TORQUE  
SPECIFICATIONS  
SEE DWG NO.  
128783-01-000



FOR ELECTRICAL  
CALLOUTS  
SEE DWG NO.  
121339-01-000

DESCRIPTION:  
**WIRING INSTL-BODY, 12V**

SHEET: 3 OF 4 ITEM/PART NO: 000127912 / 32499001000 REV

8

7

6

5

↓

4

3

2

1

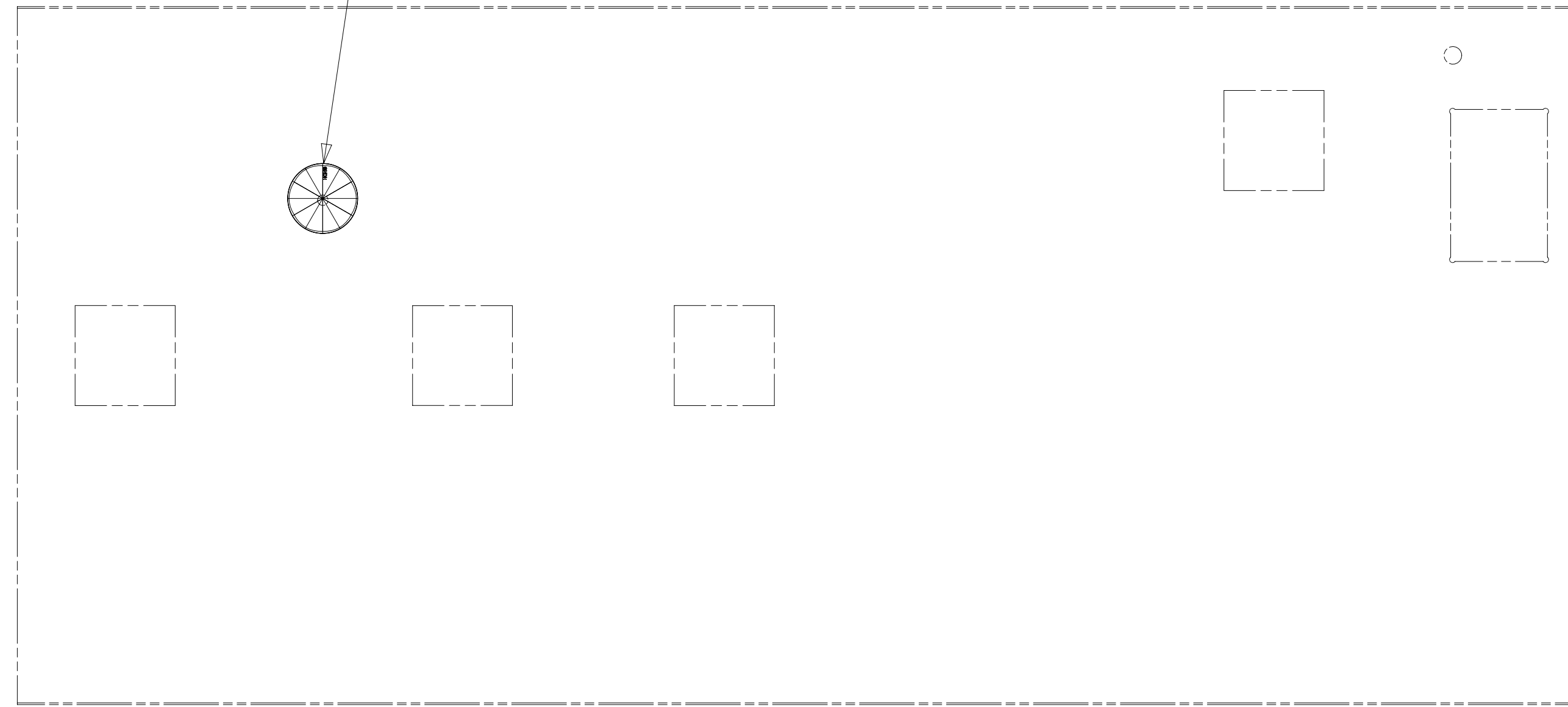
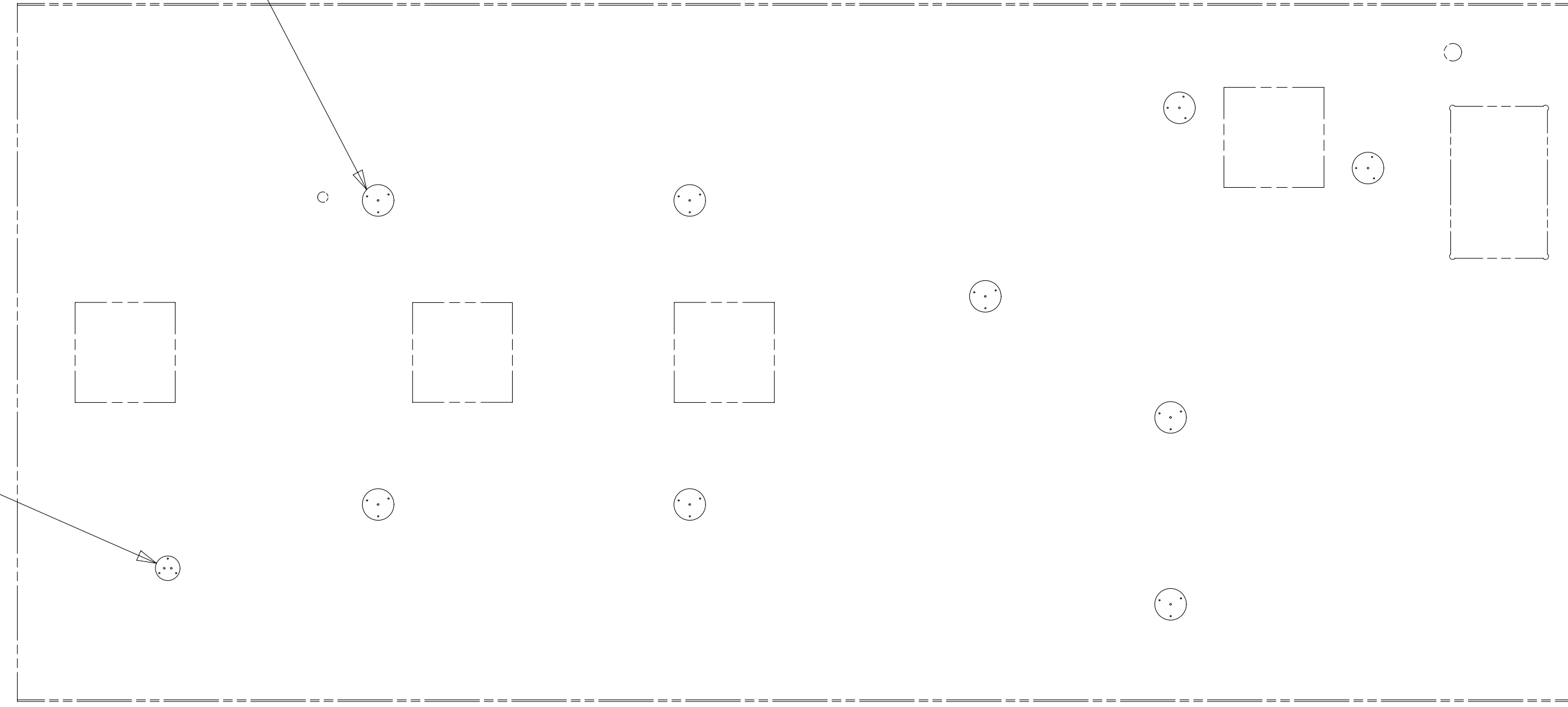
LIGHT-LED,ROUND 4.5 PLASTIC  
 000166889 / 329926-01-CHT (9)  
 SCREW  
 G13-06-16U (27)  
 CONNECTOR  
 58028-01-000 (18)

LIGHT-LED,ROUND W/SWITCH,3.5 PLASTIC  
 000166892 / 329927-01-CHT  
 SCREW  
 G13-06-16U (3)  
 CONNECTOR  
 58028-01-000 (2)

ANTENNA-TV, OMNIDIRECTIONAL  
 000171487 / 331386-01-CHT  
 SCREW  
 G67-10-16U (4)

1J8

1



D

D

C

C

B

B

A

A

1 SEE ANTENNA INSTALLATION MANUAL FOR  
 CORRECT INSTALLATION PROCEDURE.

NOTES:

FOR ELECTRICAL  
 TORQUE  
 SPECIFICATIONS  
 SEE DWG NO.  
 128783-01-000

FOR  
 ELECTRICAL  
 CALLOUTS  
 SEE DWG NO.  
 121339-01-000

- 1J8 TV ANTENNA-OMNI DIRECTIONAL, PORTABLE
- 265 CODES/STANDARDS-CSA/CMVSS
- 1B1 CODES/STANDARDS USA

1B1 265

|   |   |     |
|---|---|-----|
| DESCRIPTION:<br><b>WIRING INSTL-BODY, 12V</b> |   |     |
| SHEET:<br><b>4 OF 4</b>                       | ITEM/PART NO:<br><b>000127912 / 32499001000</b> | REV |

8

7

6

5

↑

4

3

2

1

16-Nov-2018