

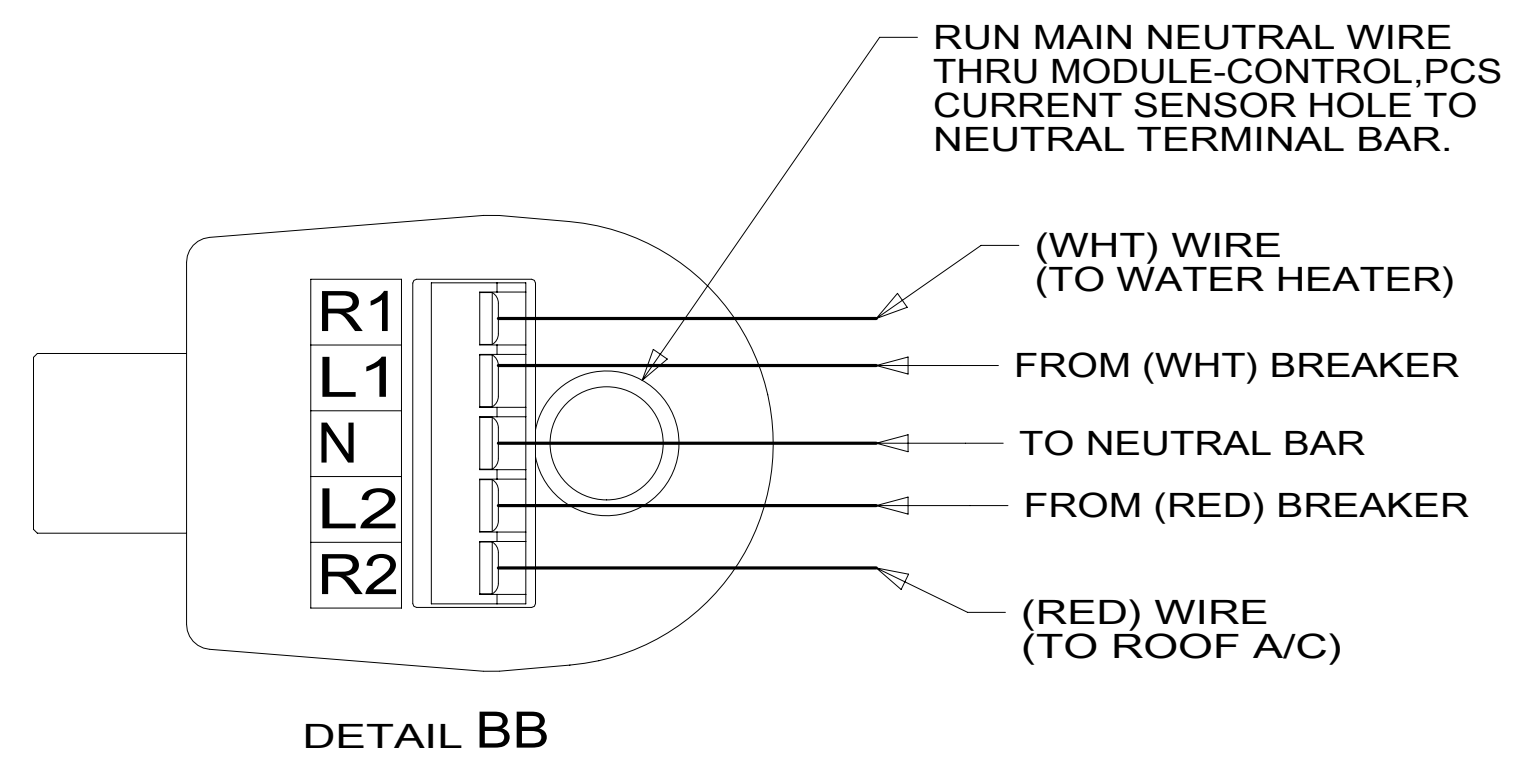
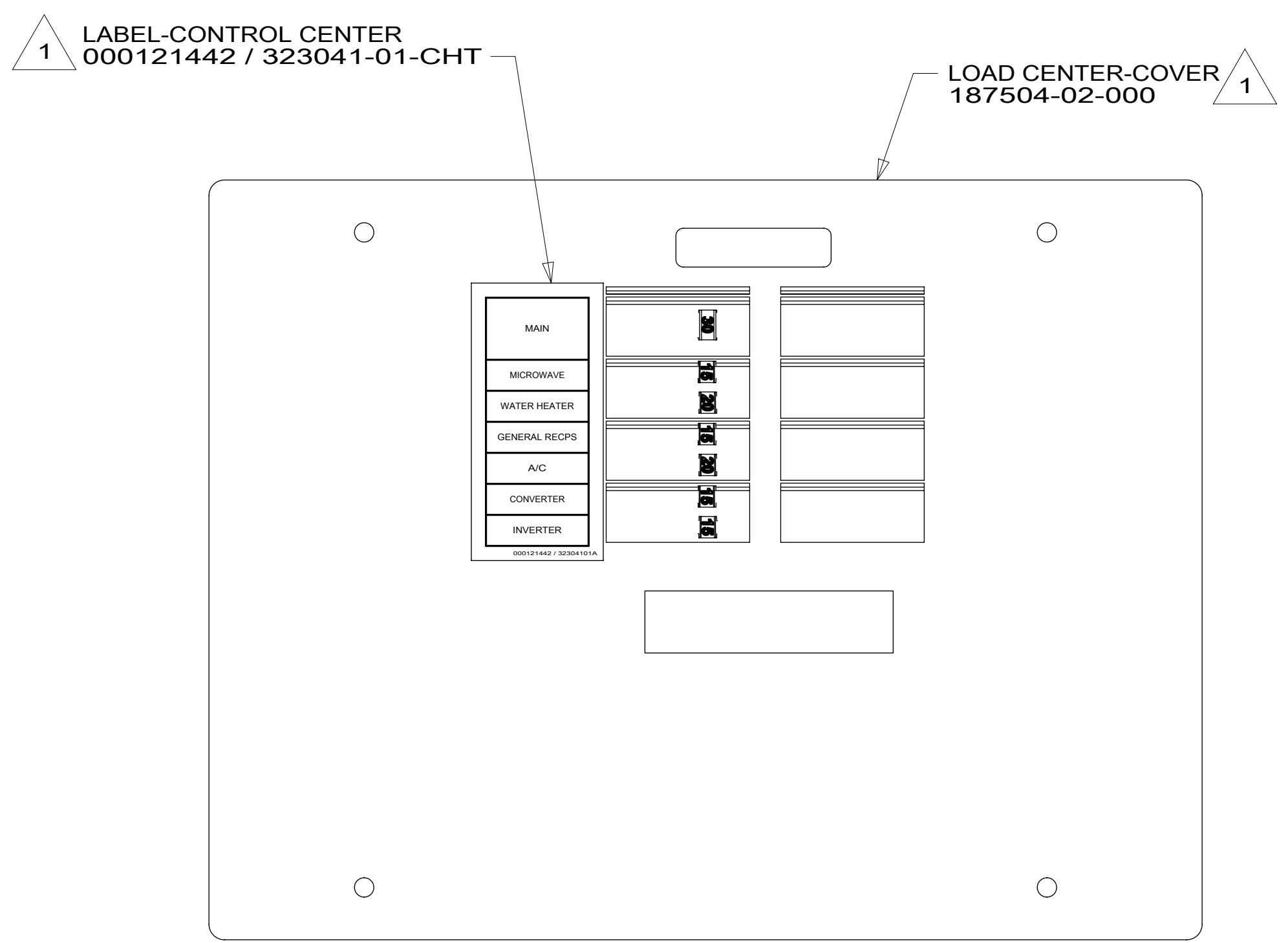
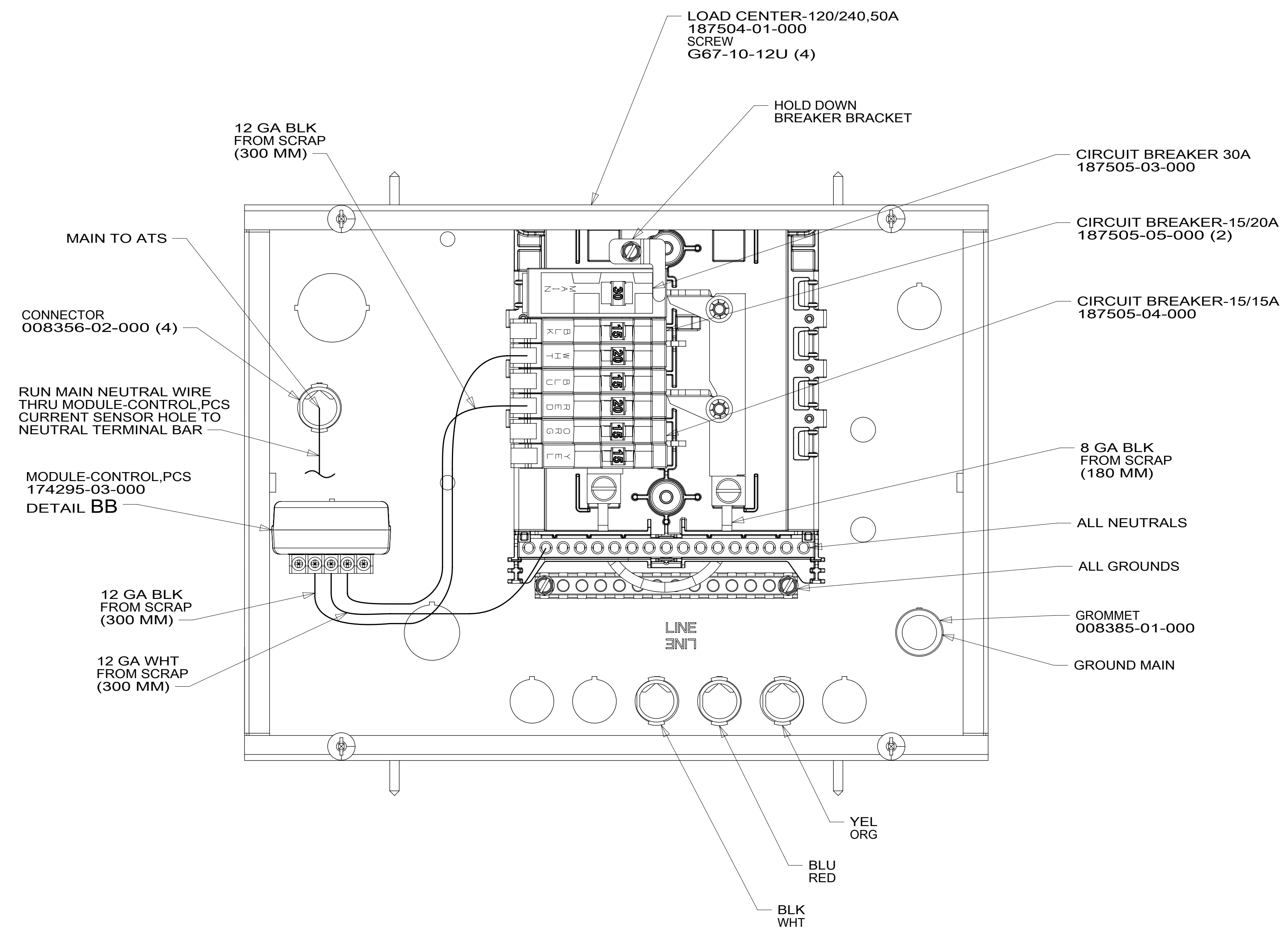
8 7 6 5 4 3 2 1

D

C

B

A



- 7. SEE WIRING INSTL-BODY, 110V FOR ADDITIONAL INFORMATION.
- 6. ALL 110V STRANDED WIRE WITHOUT TERMINALS TO BE STRIPPED 10 MM AND SOLDER DIPPED.
- 5. REMOVE 400 MM FROM OUTER JACKET ON ALL WIRES ENTERING LOAD CENTER AND TRIM INDIVIDUAL CONDUCTORS AS REQUIRED TO MAKE INTERNAL CONNECTIONS.
- 4. ALL WIRES TO BE CLAMPED WITHIN 200 MM OF ATS.
- 3. GROUND WIRES ARE NOT SHOWN FOR CLARITY.
- 2. ALL GROUNDS TO BE COVERED WITH TUBING 8041-02-000.

1 INSTALLED BY ASSEMBLY LINE.

NOTES:

FOR ELECTRICAL
TORQUE
SPECIFICATIONS
SEE DWG NO.
128783-01-000

FOR ELECTRICAL
CALLOUTS
SEE DWG NO.
121339-01-000

265 CODES/STANDARDS-CSA/CMVSS
1B1 CODES/STANDARDS USA

1B1 265



DSNR:	ALL DIMENSIONS ARE IN MILLIMETERS	
DFFR:		
UNSPECIFIED TOLERANCES:	MATERIAL:	
WHOLE DIM (X) ±		
ONE-PLACE (X.X) ±		
TWO-PLACE (X.XX) ±		
ANGLE ±		
REFER TO ES0018 FOR FASTENER TIGHTENING GUIDELINES	WEIGHT: (LBS)	FIRST USED: 19 259G

DESCRIPTION: LOAD CENTER ASM		
SHEET: 1 OF 1	ITEM/PART NO: 000127262 / 32465901000	REV:

8 7 6 5 4 3 2 1

D

C

B

A