

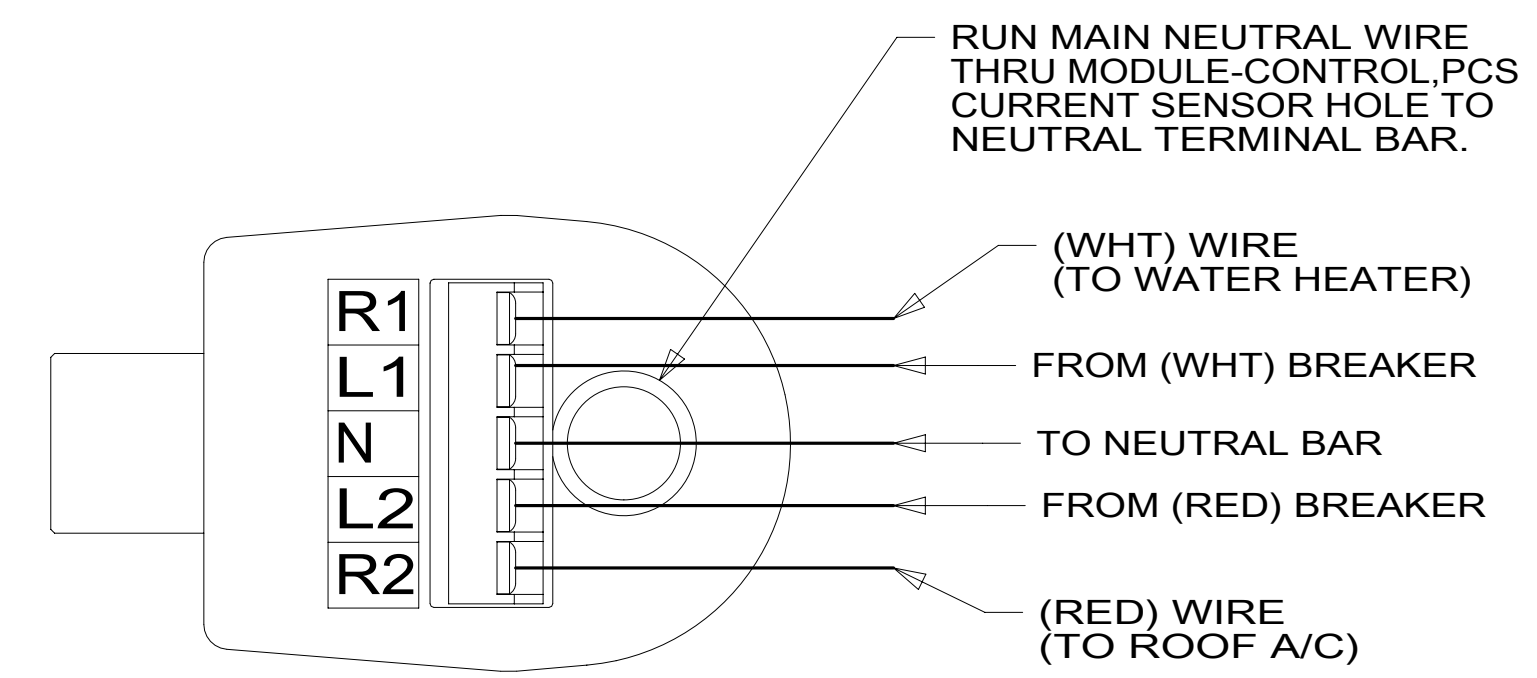
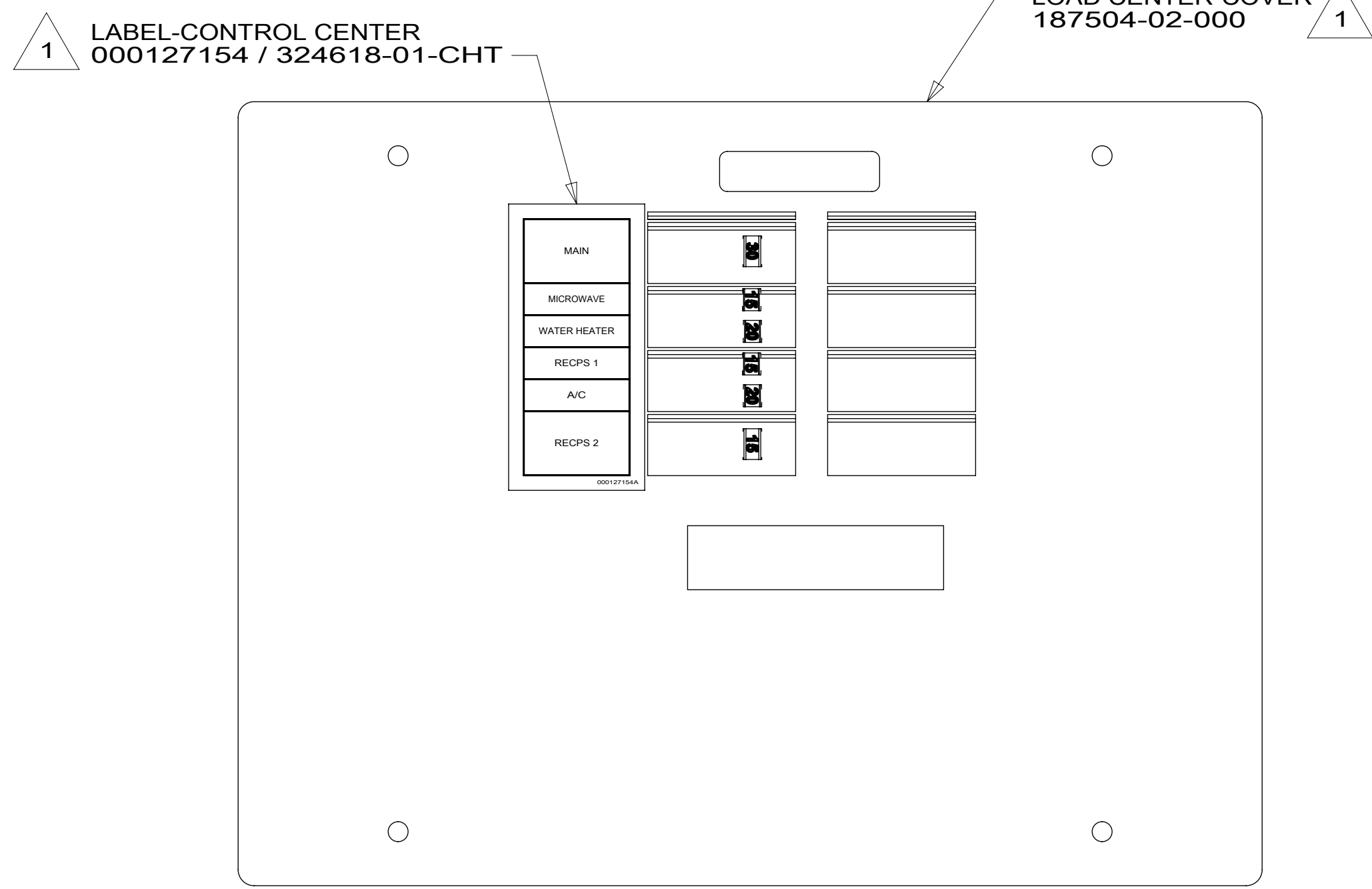
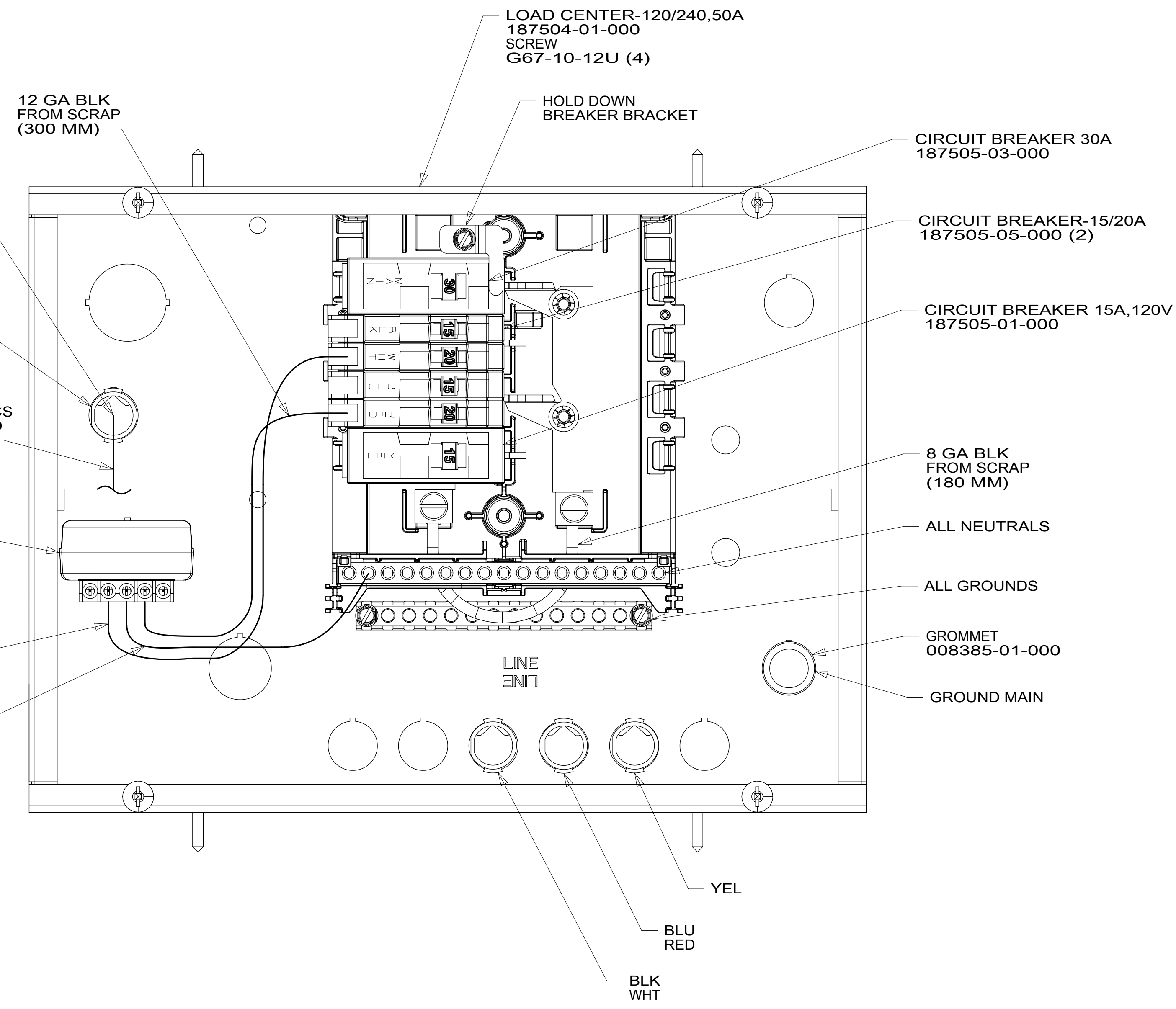
8 7 6 5 4 3 2 1

D

C

B

A



DETAIL AA

- 7. SEE WIRING INSTL-BODY,110V FOR ADDITIONAL INFORMATION.
- 6. ALL 110V STRANDED WIRE WITHOUT TERMINALS TO BE STRIPPED 10 MM AND SOLDER DIPPED.
- 5. REMOVE 400 MM FROM OUTER JACKET ON ALL WIRES ENTERING LOAD CENTER AND TRIM INDIVIDUAL CONDUCTORS AS REQUIRED TO MAKE INTERNAL CONNECTIONS.
- 4. ALL WIRES TO BE CLAMPED WITHIN 200 MM OF ATS.
- 3. GROUND WIRES ARE NOT SHOWN FOR CLARITY.
- 2. ALL GROUNDS TO BE COVERED WITH TUBING 8041-02-000.

1 INSTALLED BY ASSEMBLY LINE.

NOTES:

265 CODES/STANDARDS-CSA/CMVSS
1B1 CODES/STANDARDS USA

1B1 265



DSNR:	ALL DIMENSIONS ARE IN MILLIMETERS	
DFFR:		
UNSPECIFIED TOLERANCES:	MATERIAL:	
WHOLE DIM (X) : 3		
ONE-PLACE (X.X) : 1.5		
TWO-PLACE (X.XX) : 0.50		
ANGLE : 1°		
REFER TO ES0018 FOR FASTENER TIGHTENING GUIDELINES	WEIGHT: (LBS)	FIRST USED:
		19 259KL

FOR ELECTRICAL TORQUE SPECIFICATIONS SEE DWG NO. 128783-01-000

FOR ELECTRICAL CALLOUTS SEE DWG NO. 121339-01-000

DESCRIPTION: LOAD CENTER ASM		
SHEET: 1 OF 1	ITEM/PART NO: 000126989 / 32458001000	REV:

8 7 6 5 4 3 2 1 REF: 1 08-Aug-2018