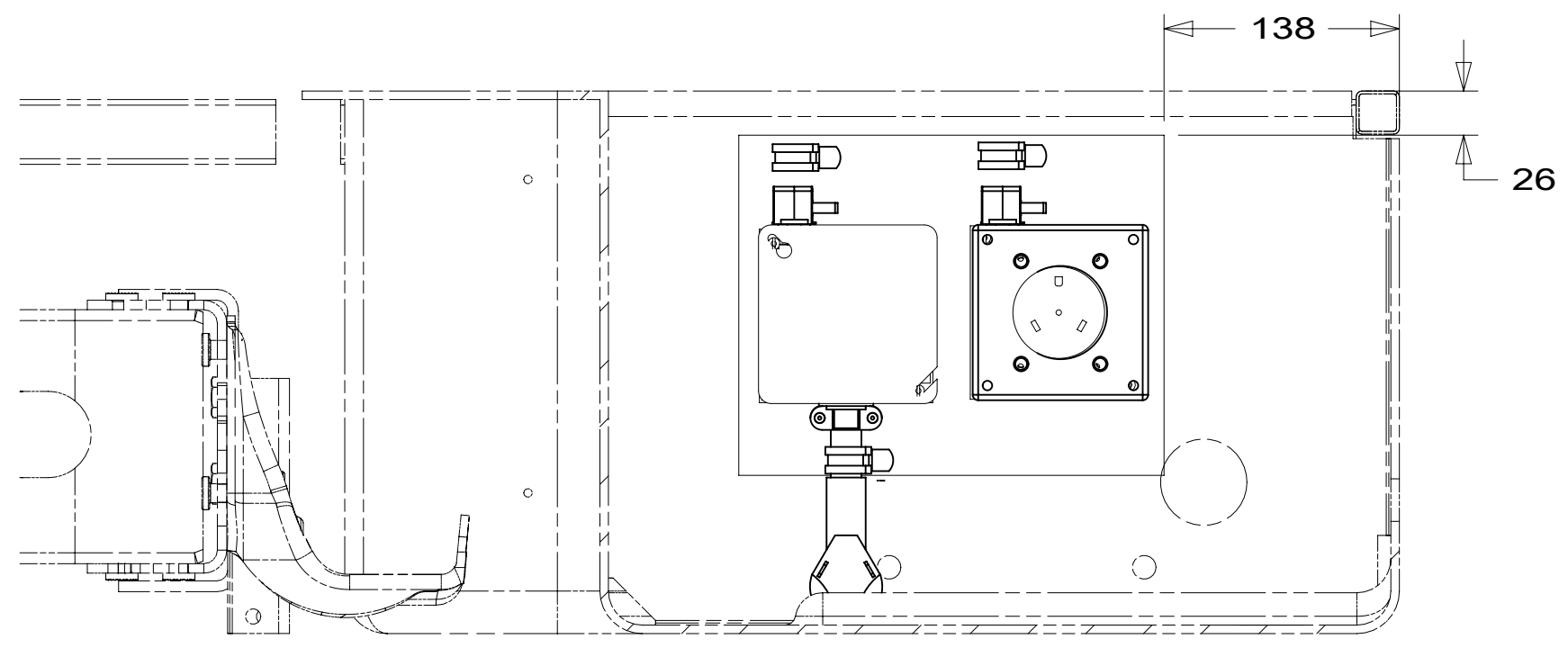


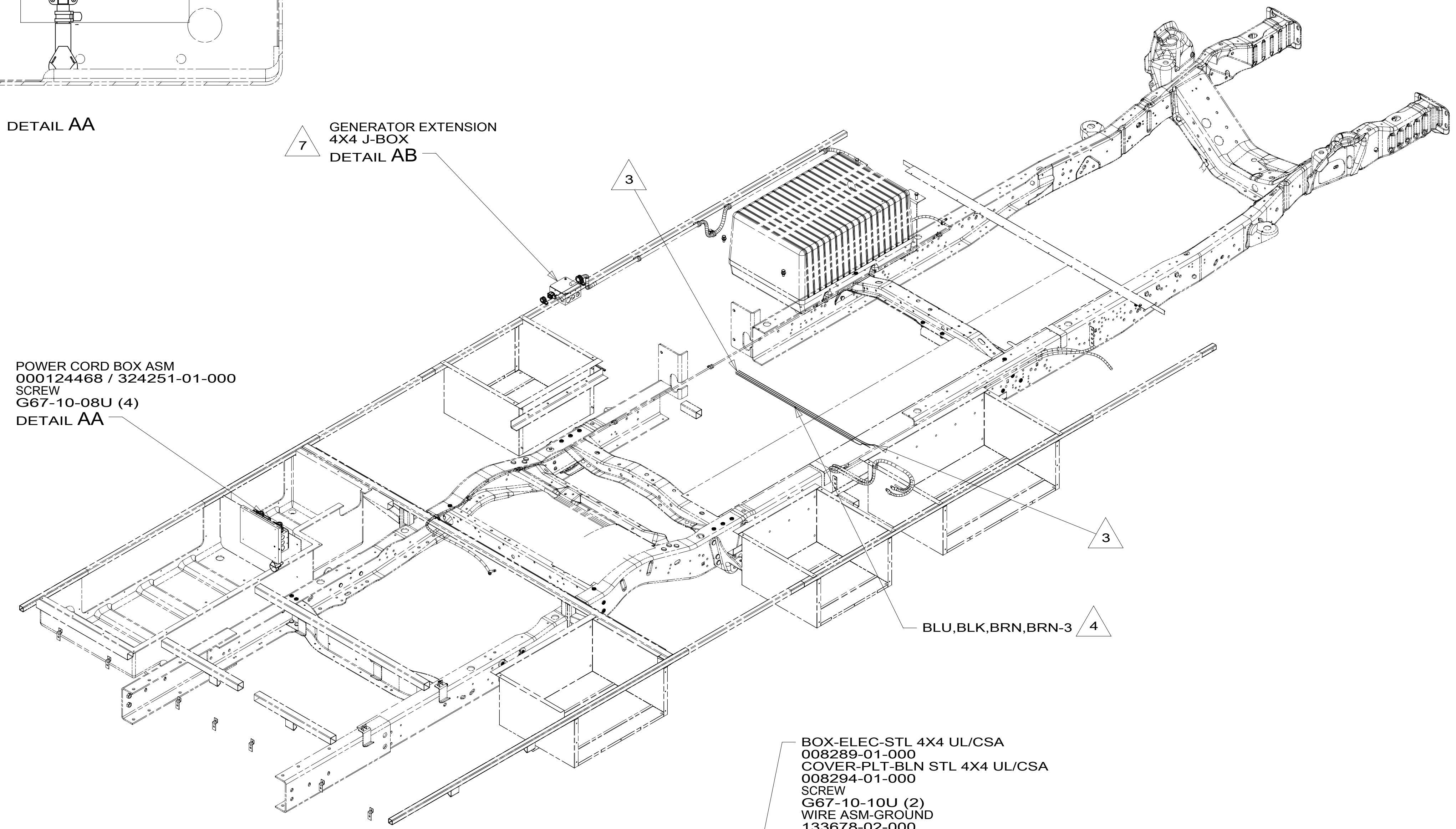
8 7 6 5 4 3 2 1



DETAIL AA

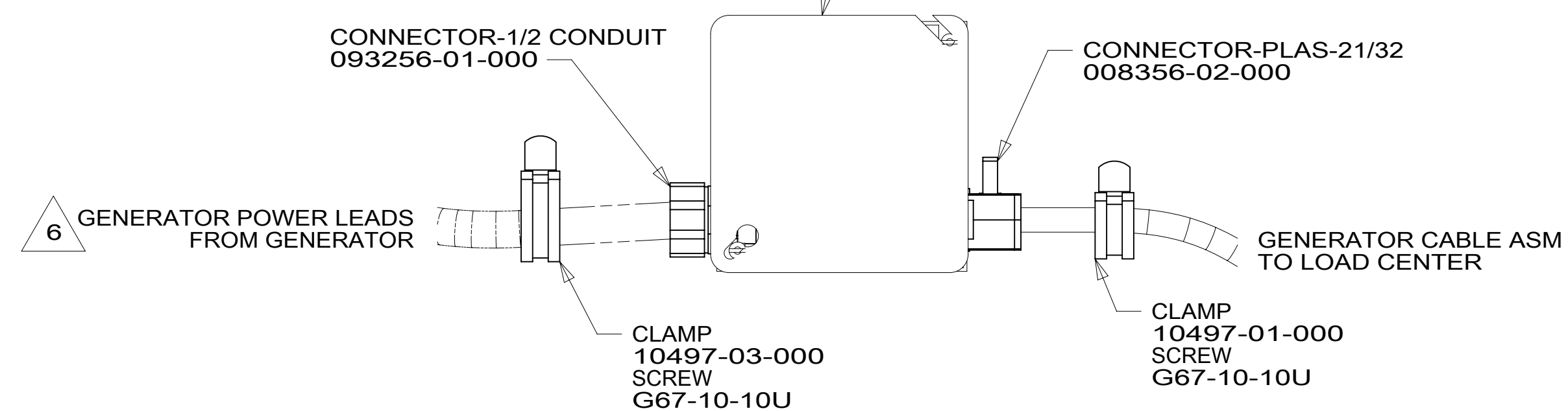
7 GENERATOR EXTENSION
4X4 J-BOX
DETAIL AB

POWER CORD BOX ASM
000124468 / 324251-01-000
SCREW
G67-10-08U (4)
DETAIL AA



BOX-ELEC-STL 4X4 UL/CSA
008289-01-000
COVER-PLT-BLN STL 4X4 UL/CSA
008294-01-000
SCREW
G67-10-10U (2)
WIRE ASM-GROUND
133678-02-000
WIRE NUT-GREY
8314-01-000 (3)
TUBING-VINYL
008041-02-000
(150MM)

- 7 LOCATED ABOVE FLOOR UNDER DINETTE SEAT.
 - 6 SEE GENERATOR INSTL FOR ADDITIONAL INFORMATION.
 - 5 APPLY TUBING TO BARE GROUND WIRE.
 - 4 WIRE ROUTED IN FLOOR.
 - 3 ROUTE WIRE THRU FLOOR.
2. ALL 110V WIRE TO BE CLAMPED WITH CLAMP 10497-05-000 WITHIN 200MM OF OUTLET BOXES, USE SCREW G67-10-12B.
1. AT MINIMUM ALL WIRES TO BE SUPPORTED AND SECURED PER CODE REQUIREMENTS. USE CLAMP 10495 OR 10497 OR WIRE TIE 8343 OR 108046 AND SCREW G67-XX-XXX OR G56-XX-XXX AS APPROPRIATE FOR INSTALLATION.



DETAIL AB

FOR ELECTRICAL TORQUE SPECIFICATIONS SEE DWG NO. 128783-01-000

FOR ELECTRICAL CALLOUTS SEE DWG NO. 121339-01-000

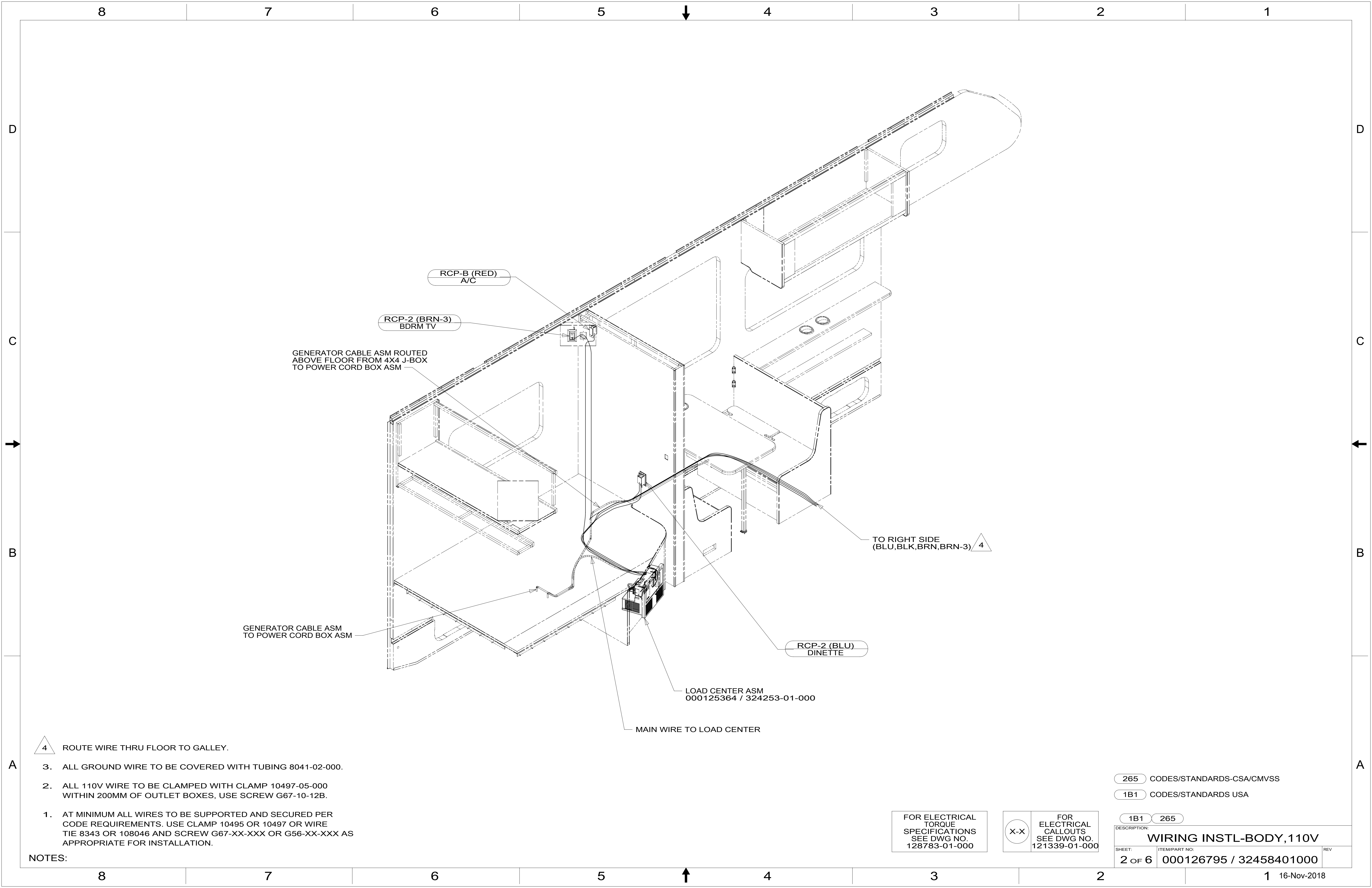
265 CODES/STANDARDS-CSA/CMVSS
1B1 CODES/STANDARDS USA

1B1 265

COPYRIGHT 2016 WINNEBAGO INDUSTRIES, INC.

DSNR:		ALL DIMENSIONS ARE IN MILLIMETERS	
DFFR:			
UNSPECIFIED TOLERANCES:		MATERIAL:	
WHOLE DIM (X)	: 3		
ONE-PLACE (X.X)	: 1.5		
TWO-PLACE (X.XX)	: 0.50		
ANGLE	: 1°		
REFER TO ES0018 FOR FASTENER TIGHTENING GUIDELINES		WEIGHT: (LBS)	FIRST USED:
			19 925J
DESCRIPTION: WIRING INSTL-BODY, 110V			
SHEET:	ITEM/PART NO.:	REV:	
1 OF 6	000126795 / 32458401000		
REF:			1 16-Nov-2018

NOTES: 8 7 6 5 4 3 2 1



△ 4 ROUTE WIRE THRU FLOOR TO GALLEY.

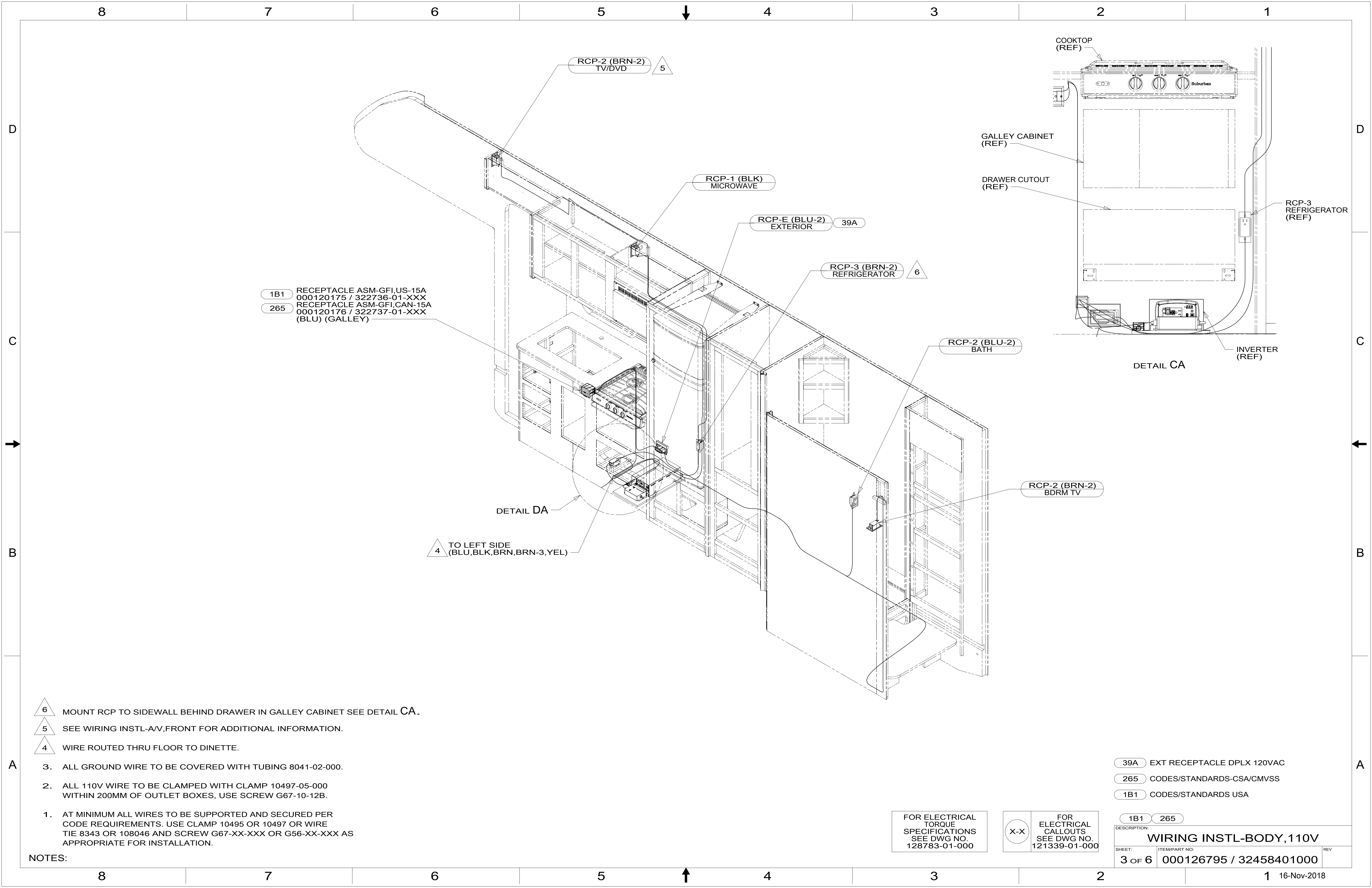
- NOTES:
3. ALL GROUND WIRE TO BE COVERED WITH TUBING 8041-02-000.
 2. ALL 110V WIRE TO BE CLAMPED WITH CLAMP 10497-05-000 WITHIN 200MM OF OUTLET BOXES, USE SCREW G67-10-12B.
 1. AT MINIMUM ALL WIRES TO BE SUPPORTED AND SECURED PER CODE REQUIREMENTS. USE CLAMP 10495 OR 10497 OR WIRE TIE 8343 OR 108046 AND SCREW G67-XX-XXX OR G56-XX-XXX AS APPROPRIATE FOR INSTALLATION.

FOR ELECTRICAL TORQUE SPECIFICATIONS SEE DWG NO. 128783-01-000

FOR ELECTRICAL CALLOUTS SEE DWG NO. 121339-01-000

265 CODES/STANDARDS-CSA/CMVSS
 1B1 CODES/STANDARDS USA

DESCRIPTION:		1B1	265
WIRING INSTL-BODY, 110V			
SHEET:	ITEM/PART NO.:	REV	
2 OF 6	000126795 / 32458401000		



1B1 RECEPTACLE ASM-GFI,US-15A
000120175 / 322736-01-XXX
265 RECEPTACLE ASM-GFI,CAN-15A
000120176 / 322737-01-XXX
(BLU) (GALLEY)

- 6 MOUNT RCP TO SIDEWALL BEHIND DRAWER IN GALLEY CABINET SEE DETAIL CA.
- 5 SEE WIRING INSTL-AV,FRONT FOR ADDITIONAL INFORMATION.
- 4 WIRE ROUTED THRU FLOOR TO DINETTE.

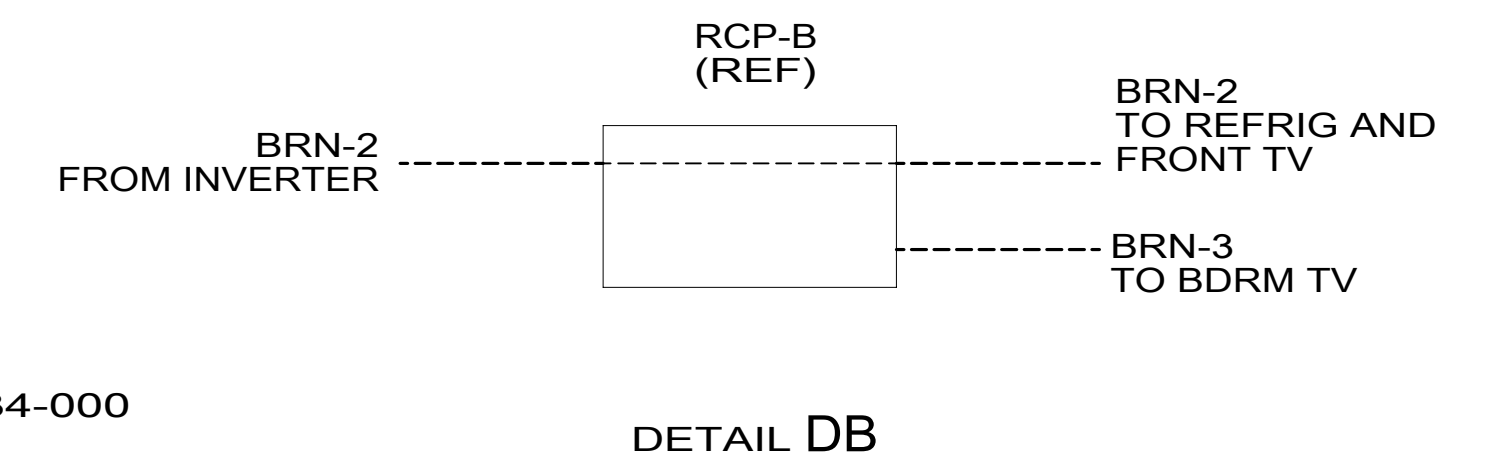
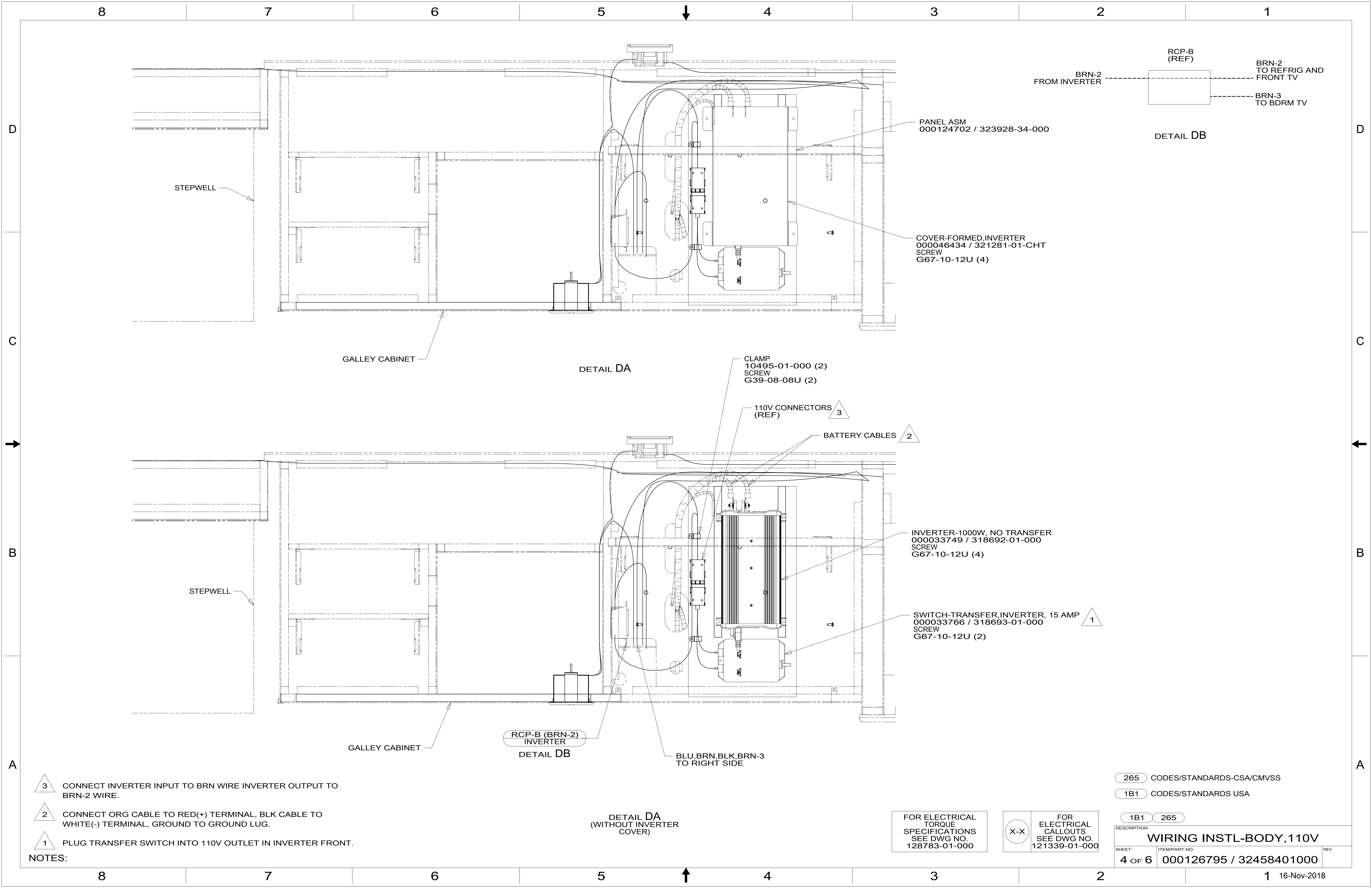
- NOTES:
3. ALL GROUND WIRE TO BE COVERED WITH TUBING 8041-02-000.
 2. ALL 110V WIRE TO BE CLAMPED WITH CLAMP 10497-05-000 WITHIN 200MM OF OUTLET BOXES, USE SCREW G67-10-12B.
 1. AT MINIMUM ALL WIRES TO BE SUPPORTED AND SECURED PER CODE REQUIREMENTS. USE CLAMP 10495 OR 10497 OR WIRE TIE 8343 OR 108046 AND SCREW G67-XX-XXX OR G56-XX-XXX AS APPROPRIATE FOR INSTALLATION.

FOR ELECTRICAL TORQUE SPECIFICATIONS SEE DWG NO. 128783-01-000

FOR ELECTRICAL CALLOUTS SEE DWG NO. 121339-01-000

- 39A EXT RECEPTACLE DPLX 120VAC
- 265 CODES/STANDARDS-CSA/CMVSS
- 1B1 CODES/STANDARDS USA

DESCRIPTION:	
WIRING INSTL-BODY, 110V	
SHEET:	ITEM/PART NO:
3 OF 6	000126795 / 32458401000
REV	



DETAIL DA
(WITHOUT INVERTER COVER)

DETAIL DB

- NOTES:
- 3 CONNECT INVERTER INPUT TO BRN WIRE INVERTER OUTPUT TO BRN-2 WIRE.
 - 2 CONNECT ORG CABLE TO RED(+) TERMINAL, BLK CABLE TO WHITE(-) TERMINAL, GROUND TO GROUND LUG.
 - 1 PLUG TRANSFER SWITCH INTO 110V OUTLET IN INVERTER FRONT.

265 CODES/STANDARDS-CSA/CMVSS
 1B1 CODES/STANDARDS USA

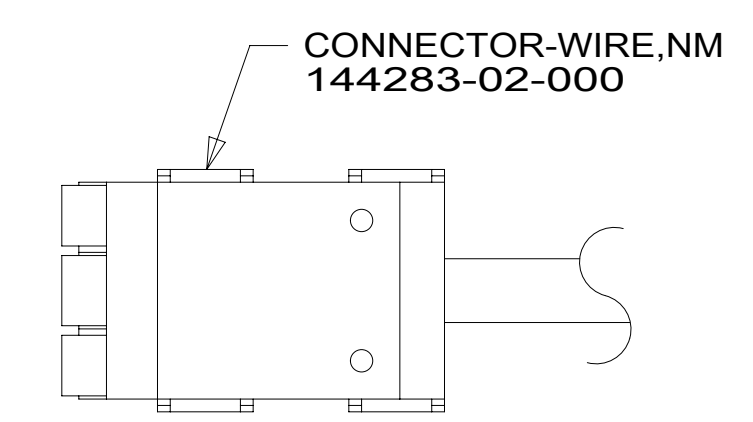
FOR ELECTRICAL TORQUE SPECIFICATIONS SEE DWG NO. 128783-01-000

FOR ELECTRICAL CALLOUTS SEE DWG NO. 121339-01-000

DESCRIPTION: WIRING INSTL-BODY, 110V		
SHEET: 4 OF 6	ITEM/PART NO: 000126795 / 32458401000	REV

8 7 6 5 4 3 2 1

RED	1B1	136135-07-044	
	265	136136-07-044	
BLK	1B1	136135-06-093	
	265	136136-06-093	
BRN	1B1	136131-03-062	4
	265	136134-03-062	4
BLU	1B1	136131-02-084	
	265	136134-02-084	
MAIN	1B1	136137-01-024	5
	265	136138-01-024	5
GENERATOR CABLE ASM	1B1	136137-01-030	6
	265	136138-01-030	6
BLU-2	1B1	136131-24-100	
	265	136134-24-100	
BRN-2	1B1	136131-19-065	4
	265	136134-19-065	4
BRN-3	1B1	136131-22-060	
	265	136134-22-060	



DETAIL EA

- 6 WIRE PREP TO INSTALL ON POWER CORD BOX ASM. GENERATOR END WILL BE INSTALLED ON LINE
- 5 WIRE PREP TO INSTALL ON POWER CORD BOX ASM. LOAD CENTER END WILL BE INSTALLED ON LINE.
- 4 SEE DETAIL EA FOR CONNECTOR INSTALLATION.
3. SEE WIRING INSTL-BODY,12V FOR ADDITIONAL INFORMATION.
2. SECURE WIRES TO BACKSIDE OF LOAD CENTER WITH WIRE TIE 116673-01-000.
1. ALL GROUND WIRES TO BE COVERED WITH TUBING 8041-02-000.

NOTES:

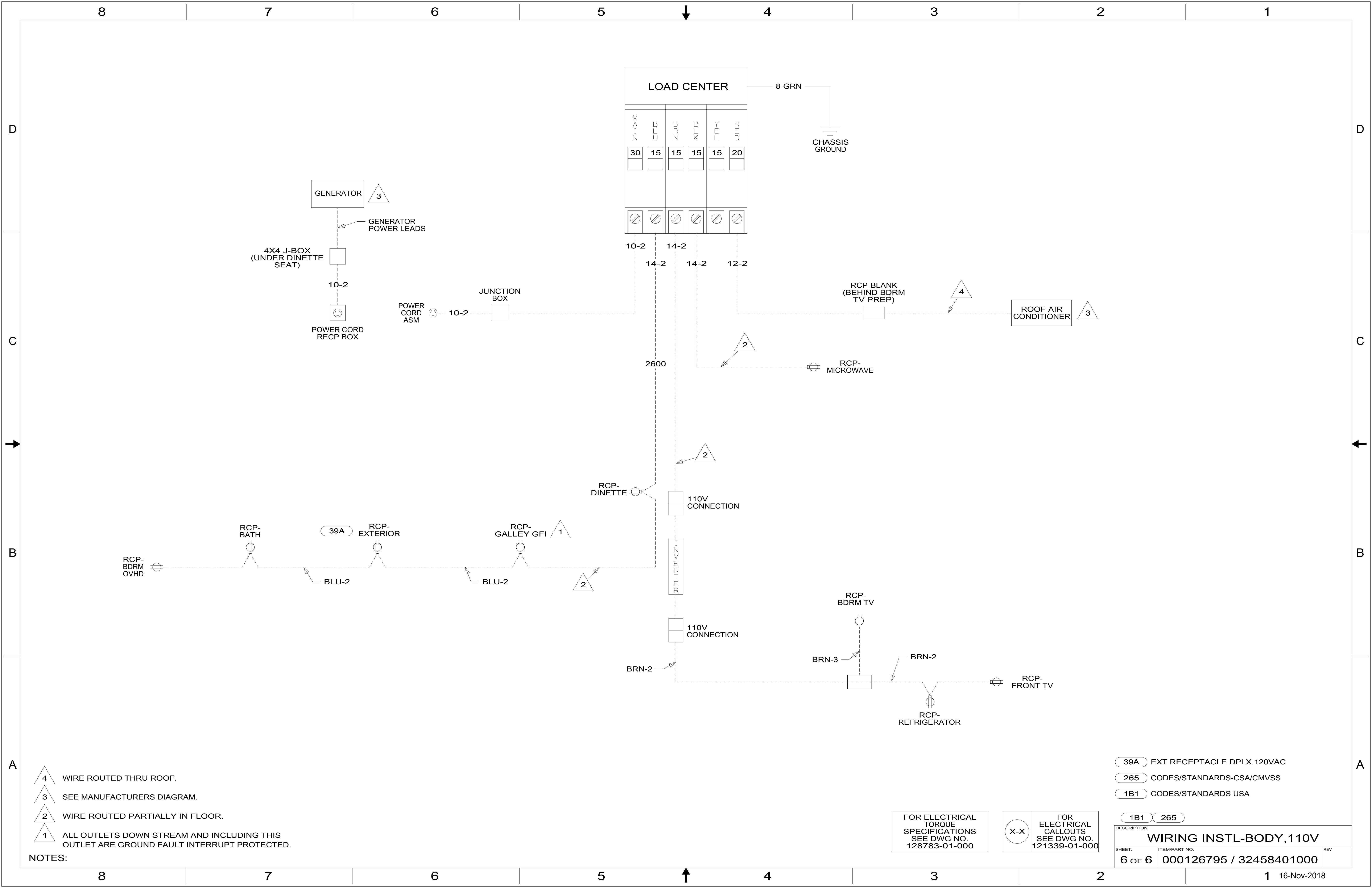
265 CODES/STANDARDS-CSA/CMVSS
 1B1 CODES/STANDARDS USA

FOR ELECTRICAL TORQUE SPECIFICATIONS SEE DWG NO. 128783-01-000

FOR ELECTRICAL CALLOUTS SEE DWG NO. 121339-01-000

1B1	265
DESCRIPTION: WIRING INSTL-BODY,110V	
SHEET: 5 OF 6	ITEM/PART NO: 000126795 / 32458401000
REV 1 16-Nov-2018	

8 7 6 5 4 3 2 1



- NOTES:
- 4 WIRE ROUTED THRU ROOF.
 - 3 SEE MANUFACTURERS DIAGRAM.
 - 2 WIRE ROUTED PARTIALLY IN FLOOR.
 - 1 ALL OUTLETS DOWN STREAM AND INCLUDING THIS OUTLET ARE GROUND FAULT INTERRUPT PROTECTED.

- 39A EXT RECEPTACLE DPLX 120VAC
- 265 CODES/STANDARDS-CSA/CMVSS
- 1B1 CODES/STANDARDS USA

FOR ELECTRICAL TORQUE SPECIFICATIONS SEE DWG NO. 128783-01-000

FOR ELECTRICAL CALLOUTS SEE DWG NO. 121339-01-000

DESCRIPTION: WIRING INSTL-BODY, 110V		
SHEET: 6 OF 6	ITEM/PART NO: 000126795 / 32458401000	REV