

NOTES:

1. AT MINIMUM ALL WIRES TO BE SUPPORTED AND SECURED PER CODE REQUIREMENTS. USE CLAMP 10495 OR 10497 OR WIRE TIE 8343 OR 108046 AND SCREW G67-XX-XXX OR G56-XX-XXX AS APPROPRIATE FOR INSTALLATION.

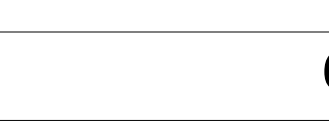
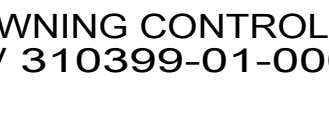
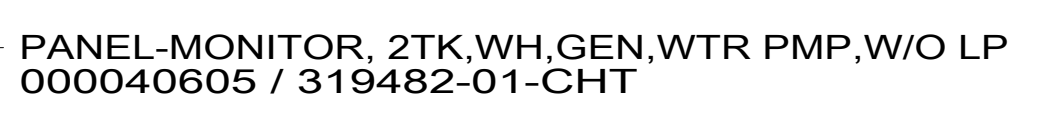
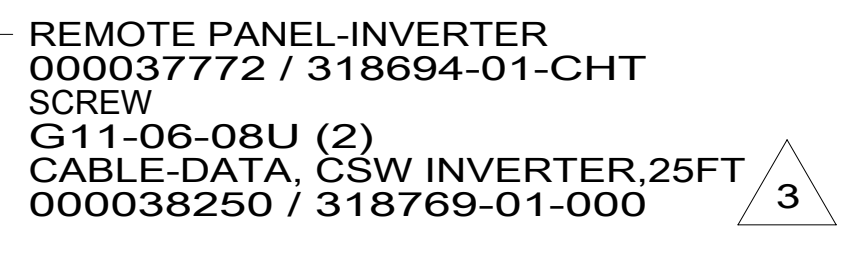
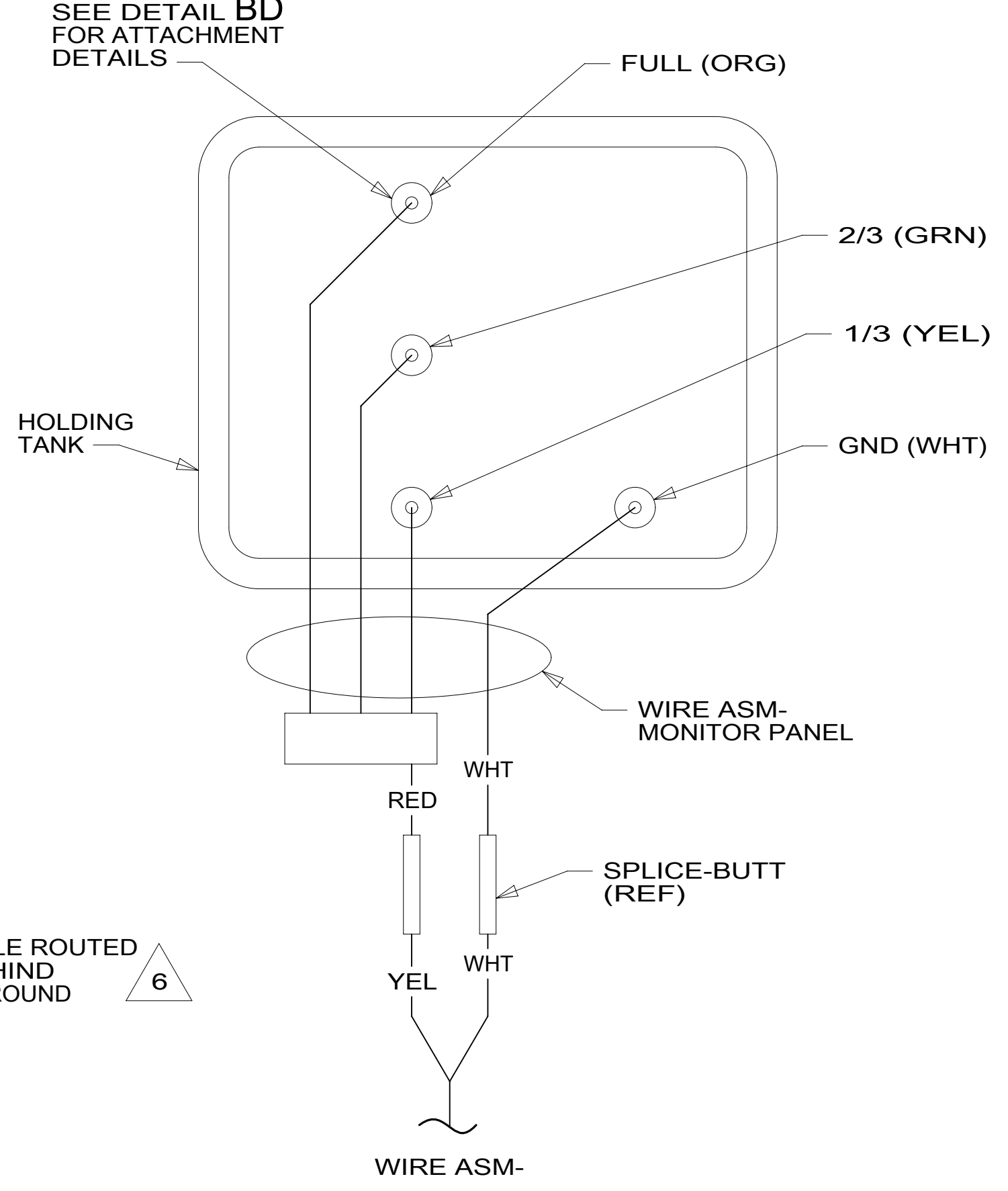
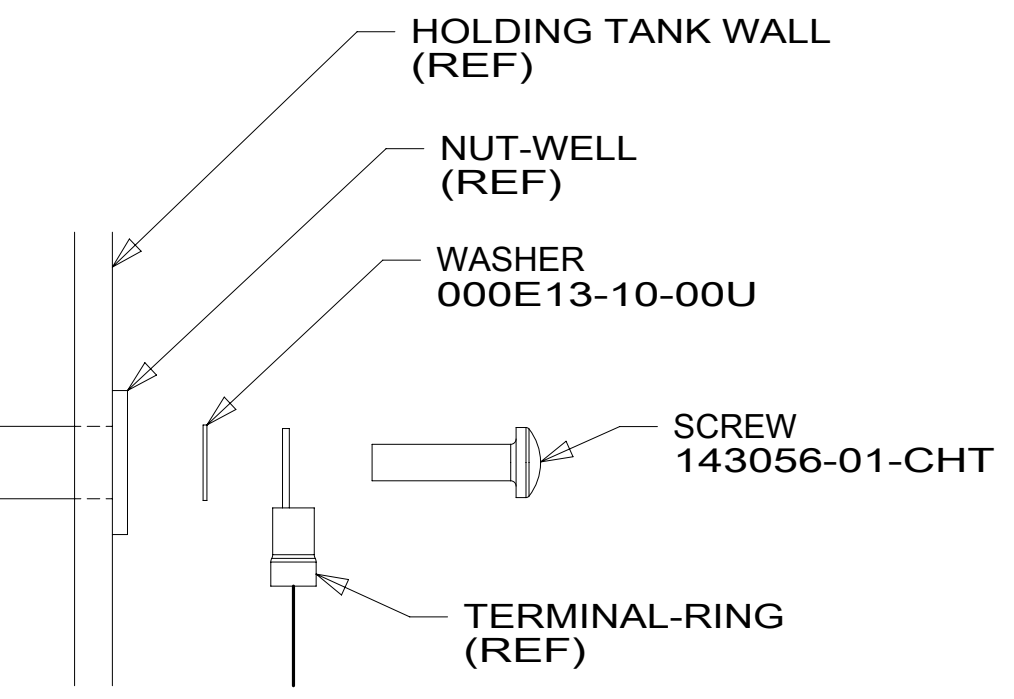
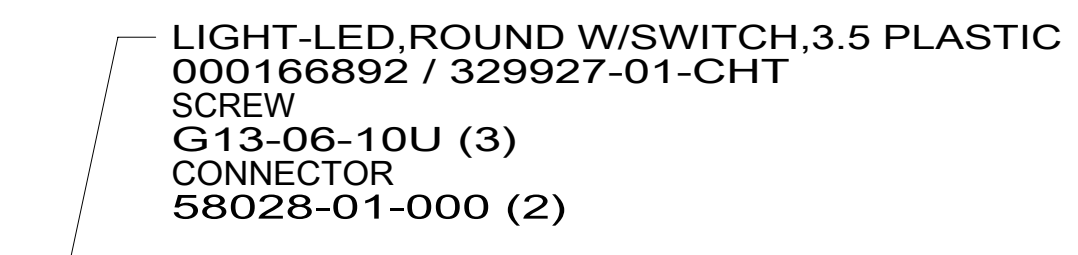
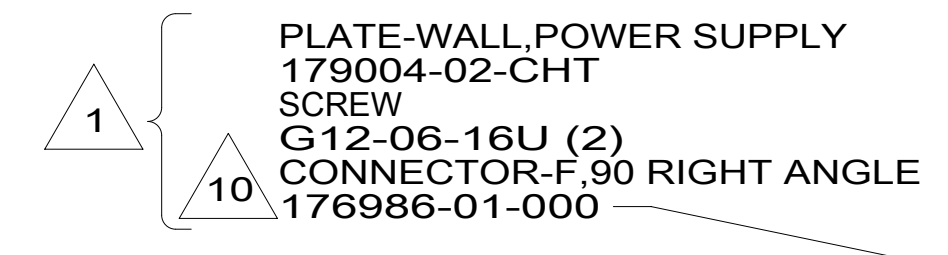
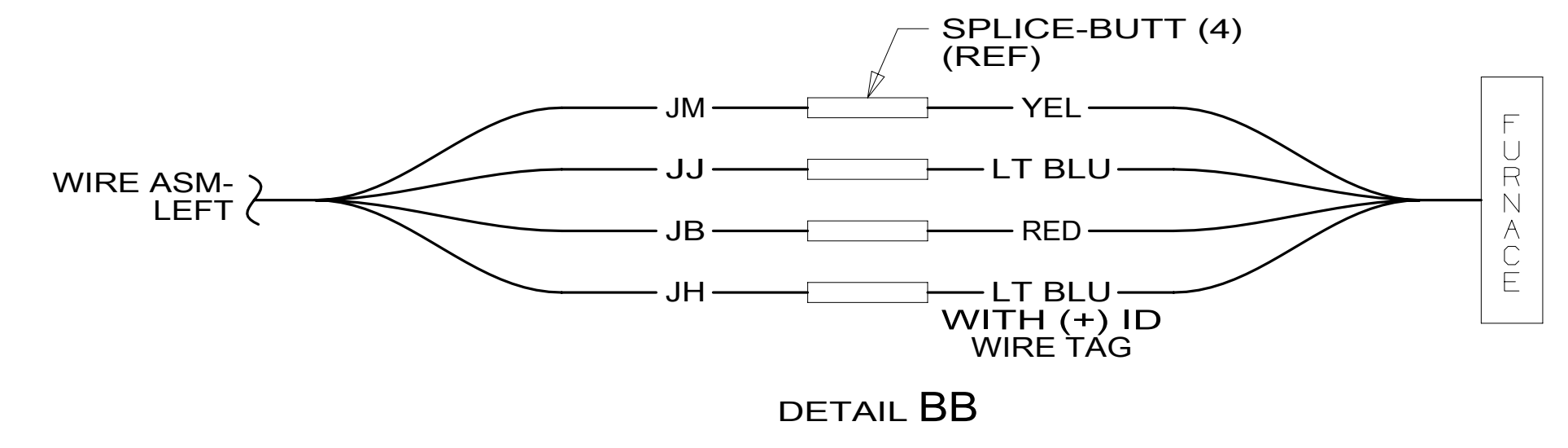
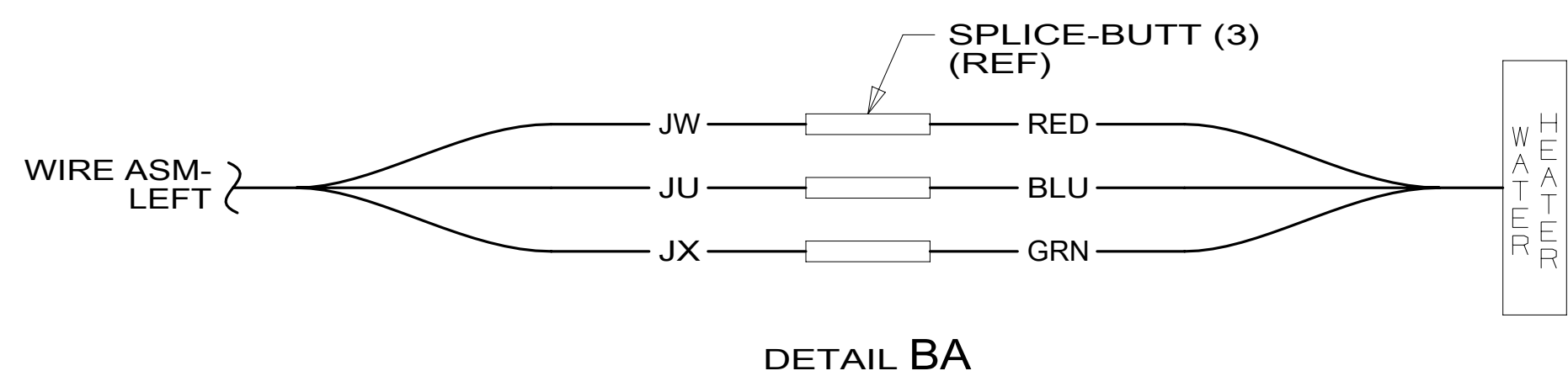
FOR ELECTRICAL TORQUE SPECIFICATIONS SEE DWG NO. 128783-01-000

FOR ELECTRICAL CALLOUTS SEE DWG NO. 121339-01-000

265 CODES/STANDARDS-CSA/CMVSS
 1B1 CODES/STANDARDS USA
 1B1 265

WINNEBAGO
 COPYRIGHT 2016 WINNEBAGO INDUSTRIES, INC.

DSNR:	ALL DIMENSIONS ARE IN MILLIMETERS	
DFFR:		
UNSPECIFIED TOLERANCES:	MATERIAL:	
WHOLE DIM (X) :		
ONE-PLACE (X.X) :		
TWO-PLACE (X.XX) :		
ANGLE :		
REFER TO ES0018 FOR FASTENER TIGHTENING GUIDELINES	WEIGHT: (LBS)	FIRST USED:
		19 925J
DESCRIPTION:		
WIRING INSTL-BODY, 12V		
SHEET:	ITEM/PART NO.:	REV:
1 OF 4	000125998 / 32458301000	
REF:		1 16-Nov-2018



- 12 TYPICAL WIRE ATTACHMENT AT ALL LEVEL PROBES (4 EACH) FOR WATER, MAIN, & AUX HOLDING TANKS.
- 11 SEE DETAIL BC FOR WIRING & CONNECTION TO SENSOR PROBES.
- 10 CONNECT 90° COAX CONNECTOR TO RED COAX.
- 9 CONNECTS TO WIRE DROP MARKED WITH RED TAPE.
- 8 CONNECTS TO WIRE DROP MARKED WITH BLU TAPE.
- 7 CONNECTS TO WIRE DROP MARKED WITH ORG TAPE.
- 6 CAMERA CABLE IS PART OF WIRE ASM-CHASSIS.
- 5 USING WIRE TIE MOUNT AND WIRE TIE SECURE WIRES TO TANK UP AND OUT OF HARMS WAY.
- 4 TYPICAL WIRE COLOR TO SENSOR PROBES ON ALL HOLDING TANKS.
- 3 ROUTE DATA CABLE WITH WIRE ASM-RIGHT FROM REMOTE PANEL TO INVERTER.
- 2. AT MINIMUM ALL WIRES TO BE SUPPORTED AND SECURED PER CODE REQUIREMENTS. USE CLAMP 10495 OR 10497 OR WIRE TIE 8343 OR 108046 AND SCREW G67-XX-XXX OR G56-XX-XXX AS APPROPRIATE FOR INSTALLATION.
- 1 SEE WIRING INSTL-A/V, FRONT FOR ADDITIONAL INFORMATION.

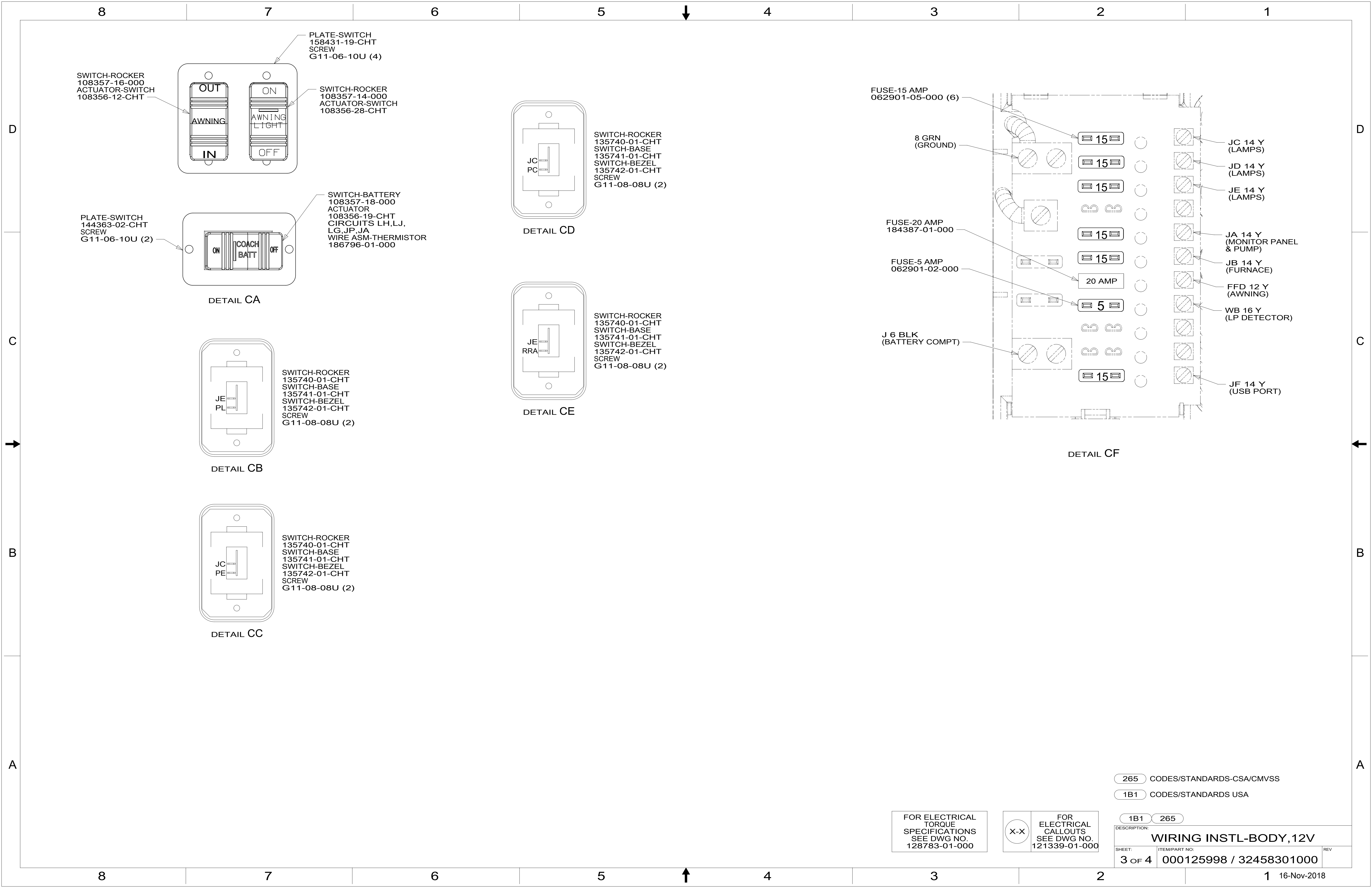
NOTES:

FOR ELECTRICAL TORQUE SPECIFICATIONS SEE DWG NO. 128783-01-000

FOR ELECTRICAL CALLOUTS SEE DWG NO. 121339-01-000

265 CODES/STANDARDS-CSA/CMVSS
1B1 CODES/STANDARDS USA

DESCRIPTION:	1B1 265	
WIRING INSTL-BODY, 12V		
SHEET:	ITEM/PART NO.:	REV
2 OF 4	000125998 / 32458301000	



SWITCH-ROCKER
108357-16-000
ACTUATOR-SWITCH
108356-12-CHT

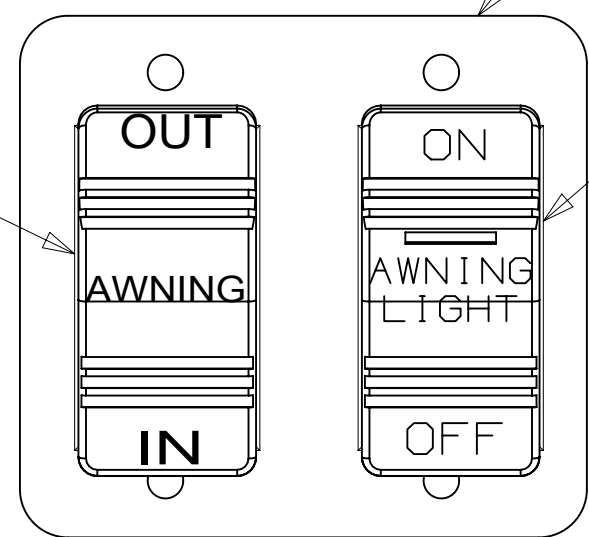
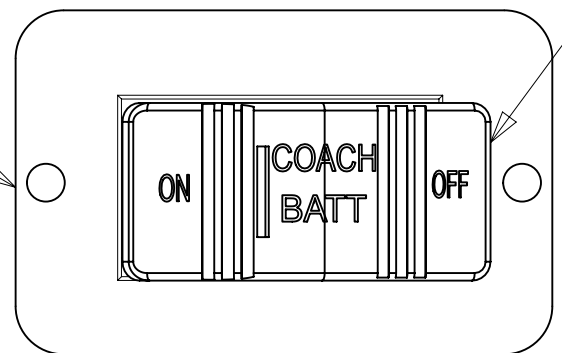


PLATE-SWITCH
158431-19-CHT
SCREW
G11-06-10U (4)

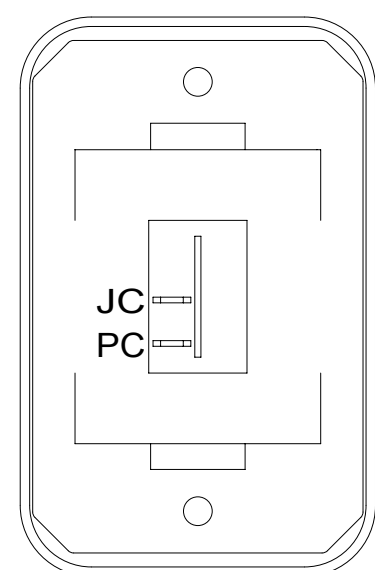
SWITCH-ROCKER
108357-14-000
ACTUATOR-SWITCH
108356-28-CHT

PLATE-SWITCH
144363-02-CHT
SCREW
G11-06-10U (2)



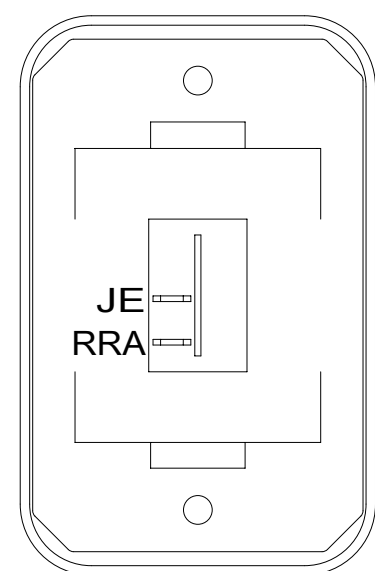
DETAIL CA

SWITCH-BATTERY
108357-18-000
ACTUATOR
108356-19-CHT
CIRCUITS LH,LJ,
LG,JP,JA
WIRE ASM-THERMISTOR
186796-01-000



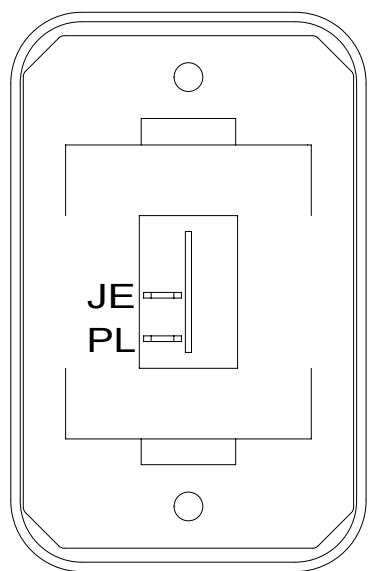
DETAIL CD

SWITCH-ROCKER
135740-01-CHT
SWITCH-BASE
135741-01-CHT
SWITCH-BEZEL
135742-01-CHT
SCREW
G11-08-08U (2)



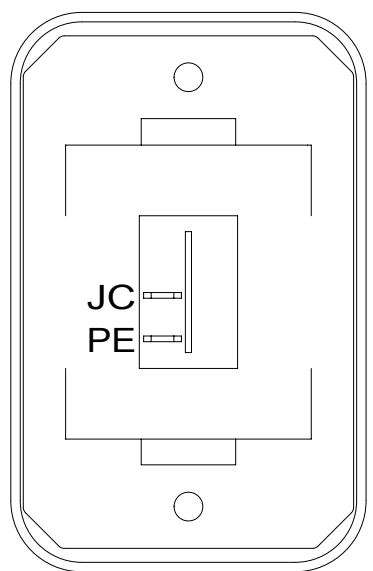
DETAIL CE

SWITCH-ROCKER
135740-01-CHT
SWITCH-BASE
135741-01-CHT
SWITCH-BEZEL
135742-01-CHT
SCREW
G11-08-08U (2)



DETAIL CB

SWITCH-ROCKER
135740-01-CHT
SWITCH-BASE
135741-01-CHT
SWITCH-BEZEL
135742-01-CHT
SCREW
G11-08-08U (2)



DETAIL CC

SWITCH-ROCKER
135740-01-CHT
SWITCH-BASE
135741-01-CHT
SWITCH-BEZEL
135742-01-CHT
SCREW
G11-08-08U (2)

FUSE-15 AMP
062901-05-000 (6)

8 GRN
(GROUND)

FUSE-20 AMP
184387-01-000

FUSE-5 AMP
062901-02-000

J 6 BLK
(BATTERY COMPT)

15

15

15

15

15

20 AMP

5

15

JC 14 Y
(LAMPS)

JD 14 Y
(LAMPS)

JE 14 Y
(LAMPS)

JA 14 Y
(MONITOR PANEL
& PUMP)

JB 14 Y
(FURNACE)

FFD 12 Y
(AWNING)

WB 16 Y
(LP DETECTOR)

JF 14 Y
(USB PORT)

DETAIL CF

265 CODES/STANDARDS-CSA/CMVSS

1B1 CODES/STANDARDS USA

1B1 265

FOR ELECTRICAL
TORQUE
SPECIFICATIONS
SEE DWG NO.
128783-01-000

X-X

FOR ELECTRICAL
CALLOUTS
SEE DWG NO.
121339-01-000

DESCRIPTION:
WIRING INSTL-BODY, 12V

SHEET: 3 OF 4 ITEM/PART NO: 000125998 / 32458301000 REV

8 7 6 5 4 3 2 1



D
C
B
A

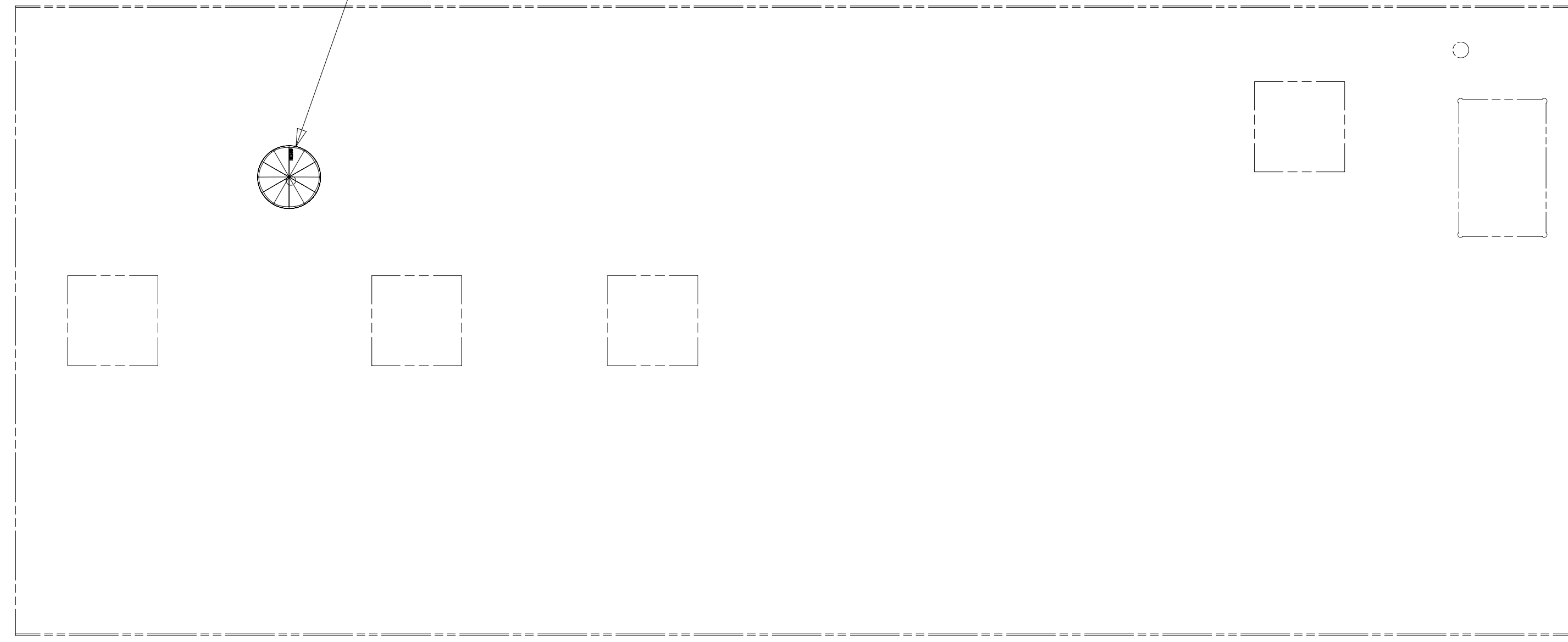
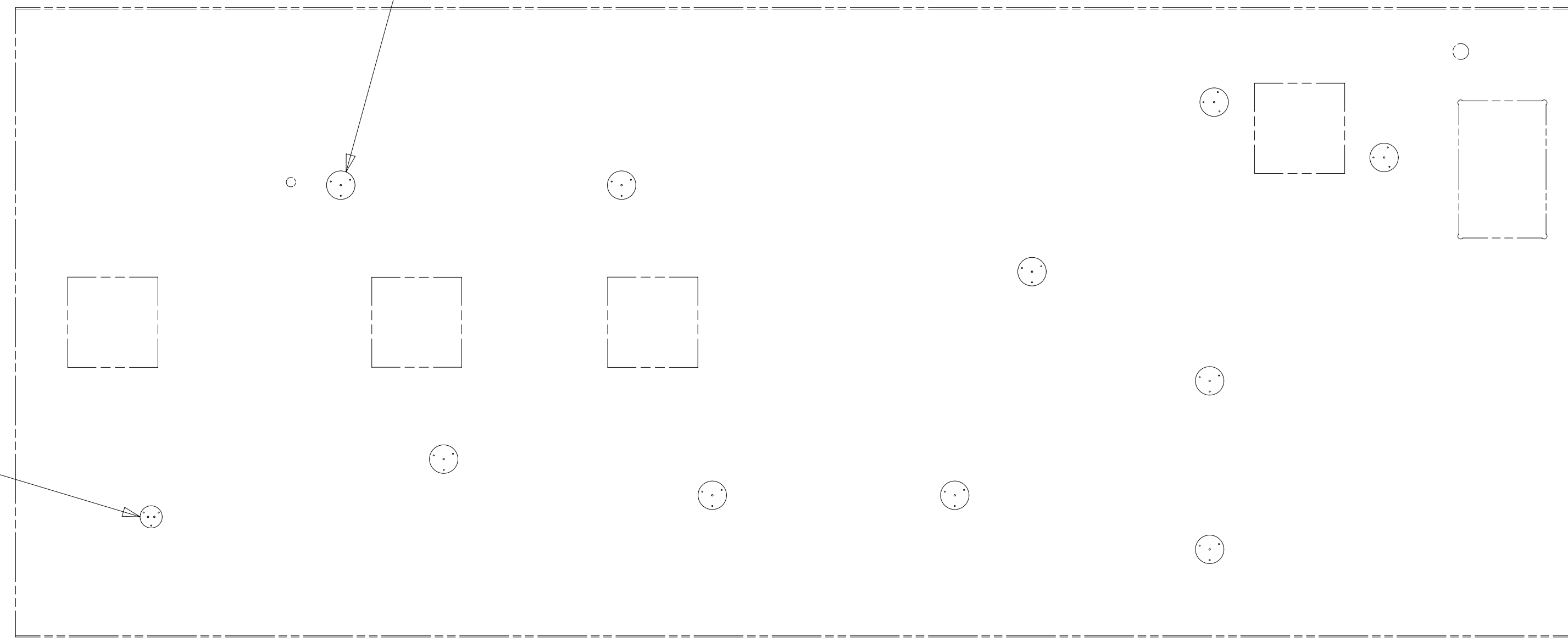
D
C
B
A

LIGHT-LED,ROUND W/SWITCH,3.5 PLASTIC
000166892 / 329927-01-CHT
SCREW
G13-06-16U (3)
CONNECTOR
58028-01-000 (2)

LIGHT-LED,ROUND 4.5 PLASTIC
000166889 / 329926-01-CHT (10)
SCREW
G13-06-16U (30)
CONNECTOR
58028-01-000 (20)

ANTENNA-TV, OMNIDIRECTIONAL
000171487 / 331386-01-CHT
SCREW
G67-10-16U (4)

1J8 1



1 SEE ANTENNA INSTALLATION MANUAL FOR
CORRECT INSTALLATION PROCEDURE.

NOTES:

FOR ELECTRICAL
TORQUE
SPECIFICATIONS
SEE DWG NO.
128783-01-000

FOR
ELECTRICAL
CALLOUTS
SEE DWG NO.
121339-01-000

- 1J8 TV ANTENNA-OMNI DIRECTIONAL,PORTABLE
- 265 CODES/STANDARDS-CSA/CMVSS
- 1B1 CODES/STANDARDS USA

DESCRIPTION: WIRING INSTL-BODY, 12V	
SHEET: 4 OF 4	ITEM/PART NO.: 000125998 / 32458301000
REV	

8 7 6 5 4 3 2 1 16-Nov-2018