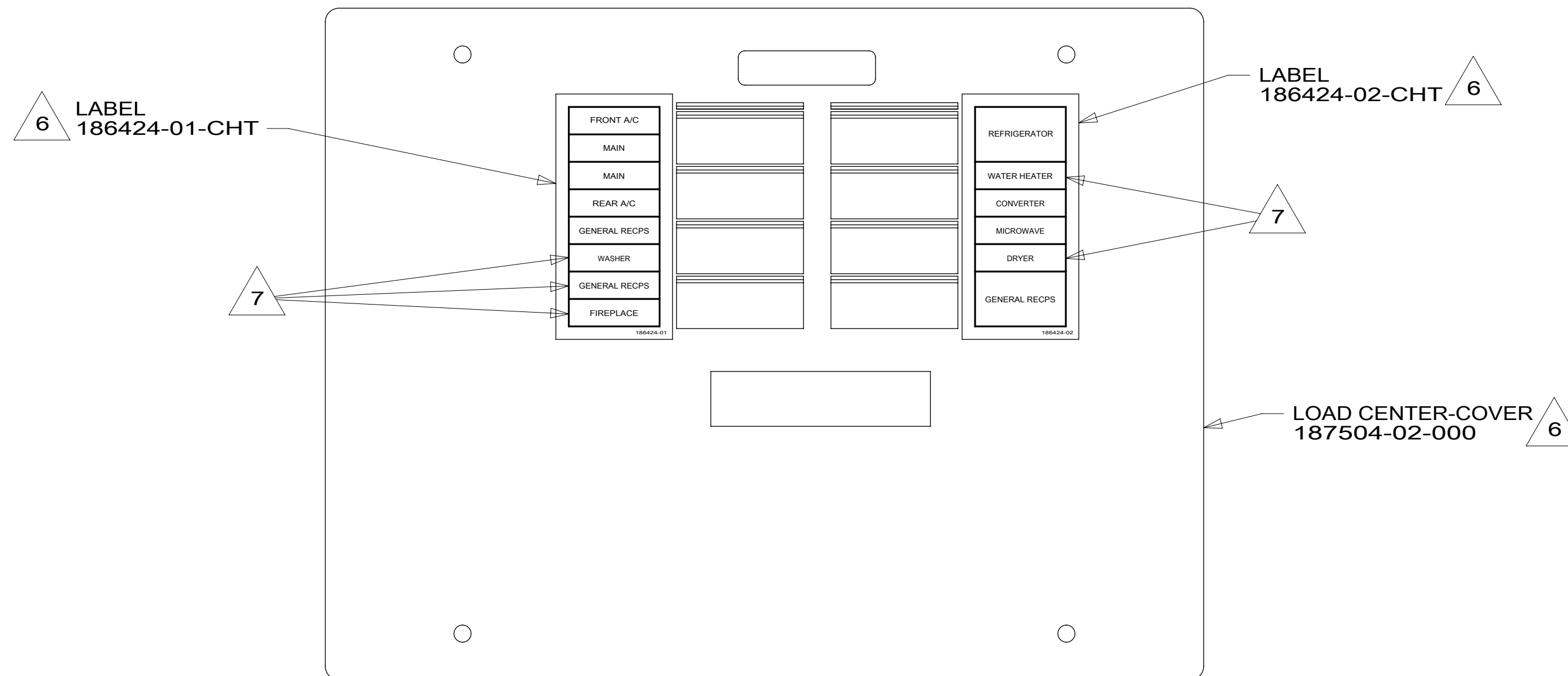
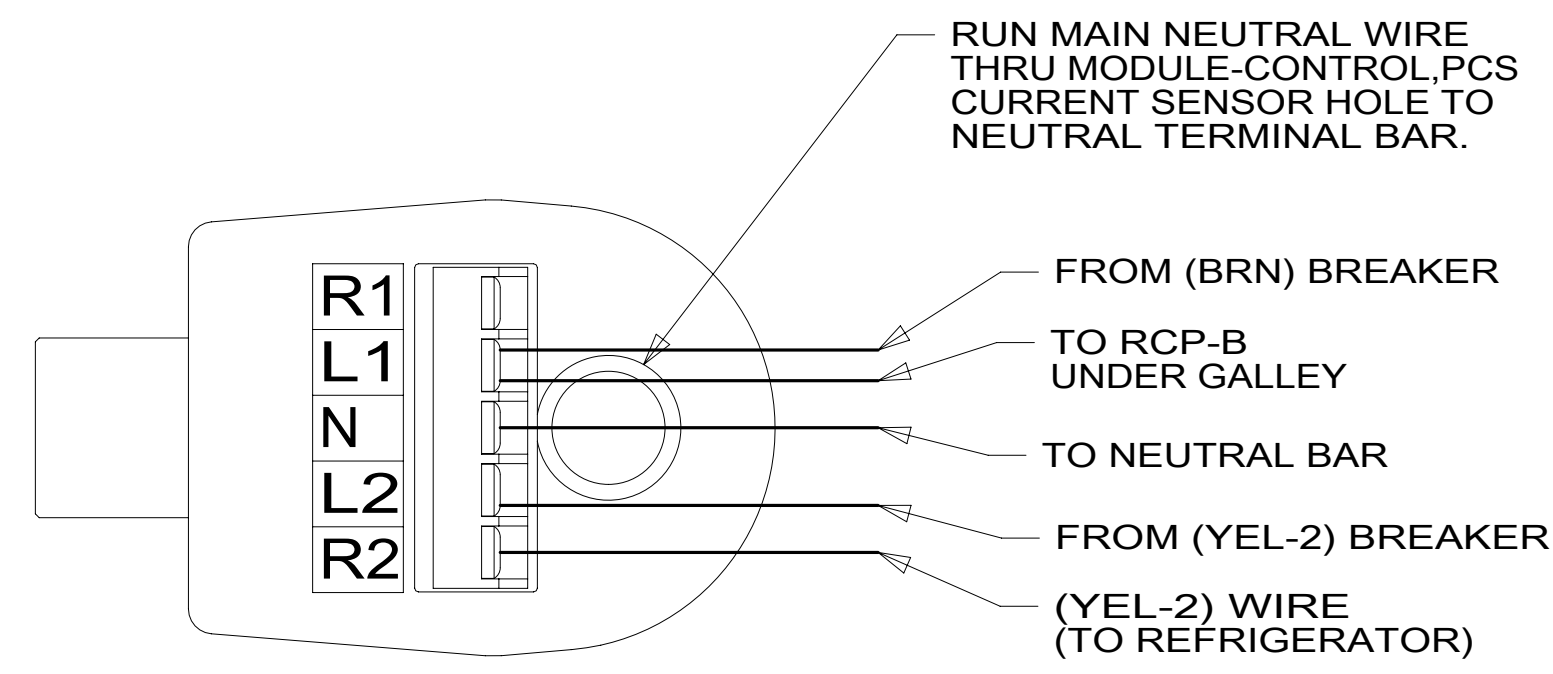
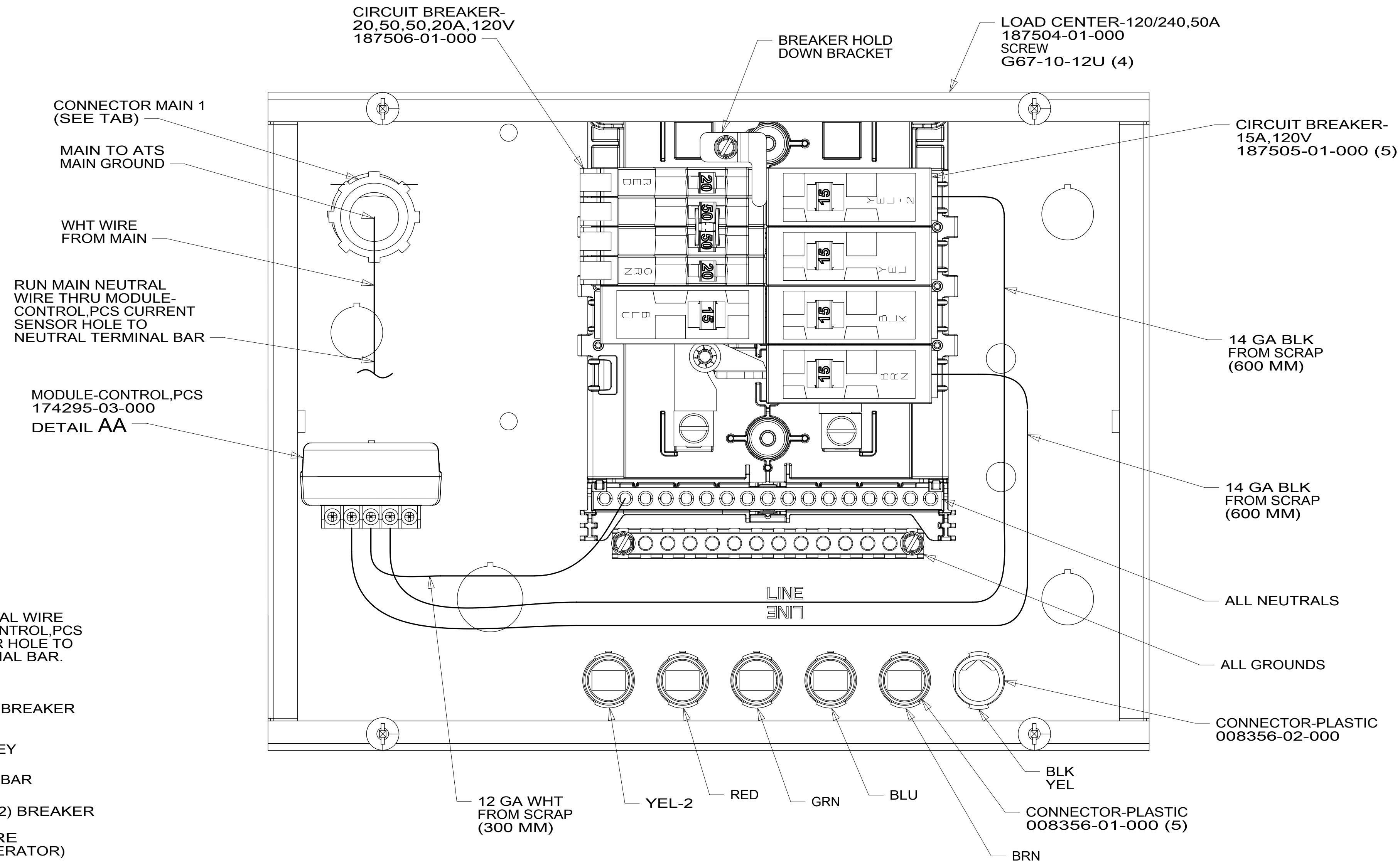


ITEM NUMBER	LEGACY NUMBER	MAIN 1
000125811	324261-01-000	008355-02-000
000125812	324261-02-000	NO CONNECTOR



7 BLACKEN OUT "WASHER", "DRYER", "GENERAL RECPS", "WATER HEATER" AND "FIREPLACE" WITH BLACK MARKER.

6 INSTALLED BY ASSEMBLY LINE.

5. ATTACH WIRES TO BACKSIDE OF LOAD CENTER, USE EXISTING HOLES AND TIE-WIRE 116673-01-000.

4. REMOVE 400MM FROM OUTER JACKET ON ALL WIRES ENTERING LOAD CENTER AND TRIM INDIVIDUAL CONDUCTORS AS REQUIRED TO MAKE INTERNAL CONNECTIONS

3. ALL 110V STRANDED WIRE W/O TERMINALS TO BE STRIPPED 10MM AND SOLDER DIPPED.

2. GROUND WIRES ARE NOT SHOWN FOR CLARITY.

1. ALL GROUND WIRES TO BE COVERED WITH TUBING 8041-02-000.

NOTES:

265 CODES/STANDARDS-CSA/CMVSS

1B1 CODES/STANDARDS USA

1B1 265



DSNR:	ALL DIMENSIONS ARE IN MILLIMETERS
DIFFR:	MATERIAL:
UNSPECIFIED TOLERANCES:	
WHOLE DIM (X) ±	3
ONE-PLACE (X.X) ±	1.5
TWO-PLACE (X.XX) ±	0.50
ANGLE ±	1°

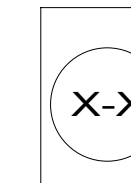
REFER TO ES0018 FOR FASTENER TIGHTENING GUIDELINES

WEIGHT: (LBS) FIRST USED: 18 E-SER

DESCRIPTION: LOAD CENTER ASM

SHEET: 1 OF 1 ITEM/PART NO: 000125795 / 32426100T01 REF:

FOR ELECTRICAL TORQUE SPECIFICATIONS SEE DWG NO. 128783-01-000



FOR ELECTRICAL CALLOUTS SEE DWG NO. 121339-01-000