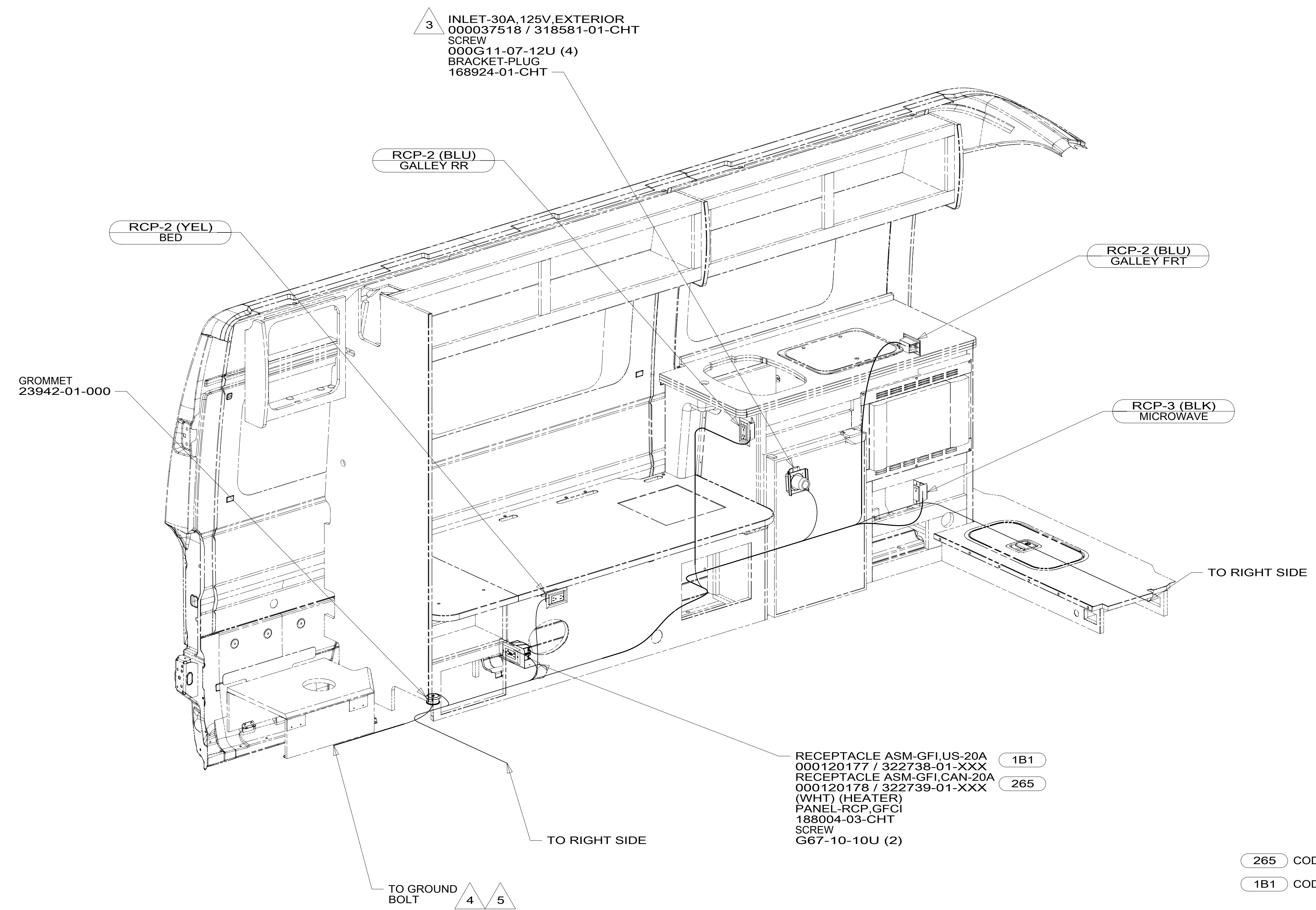


8 7 6 5 4 3 2 1

D  
C  
B  
A

D  
C  
B  
A



- 5 LOAD CENTER GROUND WIRE MUST BE ATTACHED DIRECTLY TO CHASSIS GROUND.
- 4 GROUND WIRE (8 GA WIRE) FROM LOAD CENTER ROUTES THROUGH FLOOR TO GROUND BOLT.
- 3 DO NOT HI-POT INLET. LED MAY FAIL.
2. ALL 110V WIRES TO BE CLAMPED WITH CLAMP 10497-05-000 WITHIN 200MM OF OUTLET BOXES, USE SCREW G67-10-12B.
1. AT MINIMUM ALL WIRES TO BE SUPPORTED AND SECURED PER CODE REQUIREMENTS. USE CLAMP 10495 OR 10497 OR WIRE TIE 8343 OR 108046 AND SCREW G67-XX-XXX OR G56-XX-XXX AS APPROPRIATE FOR INSTALLATION.

NOTES:

- 265 CODES/STANDARDS-CSA/CMVSS
- 1B1 CODES/STANDARDS USA
- 1B1 265

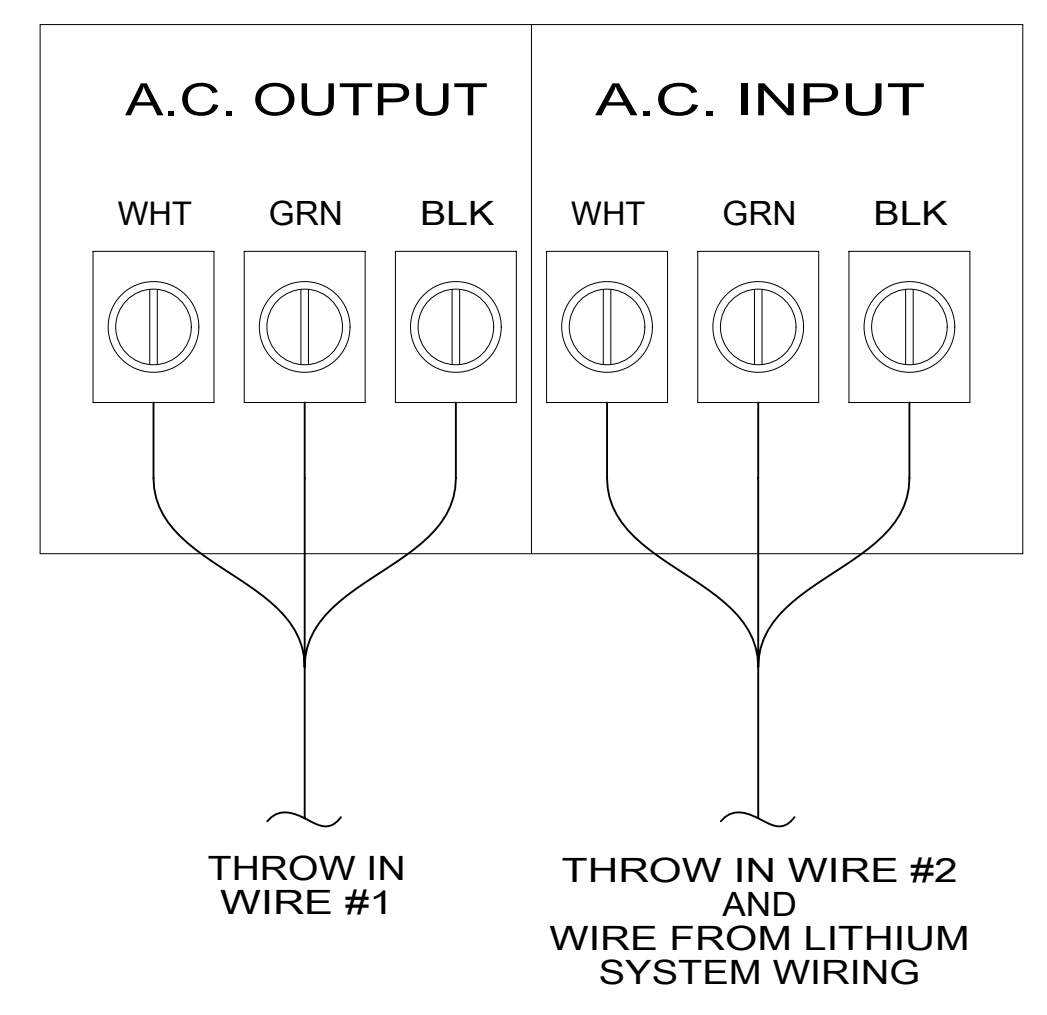
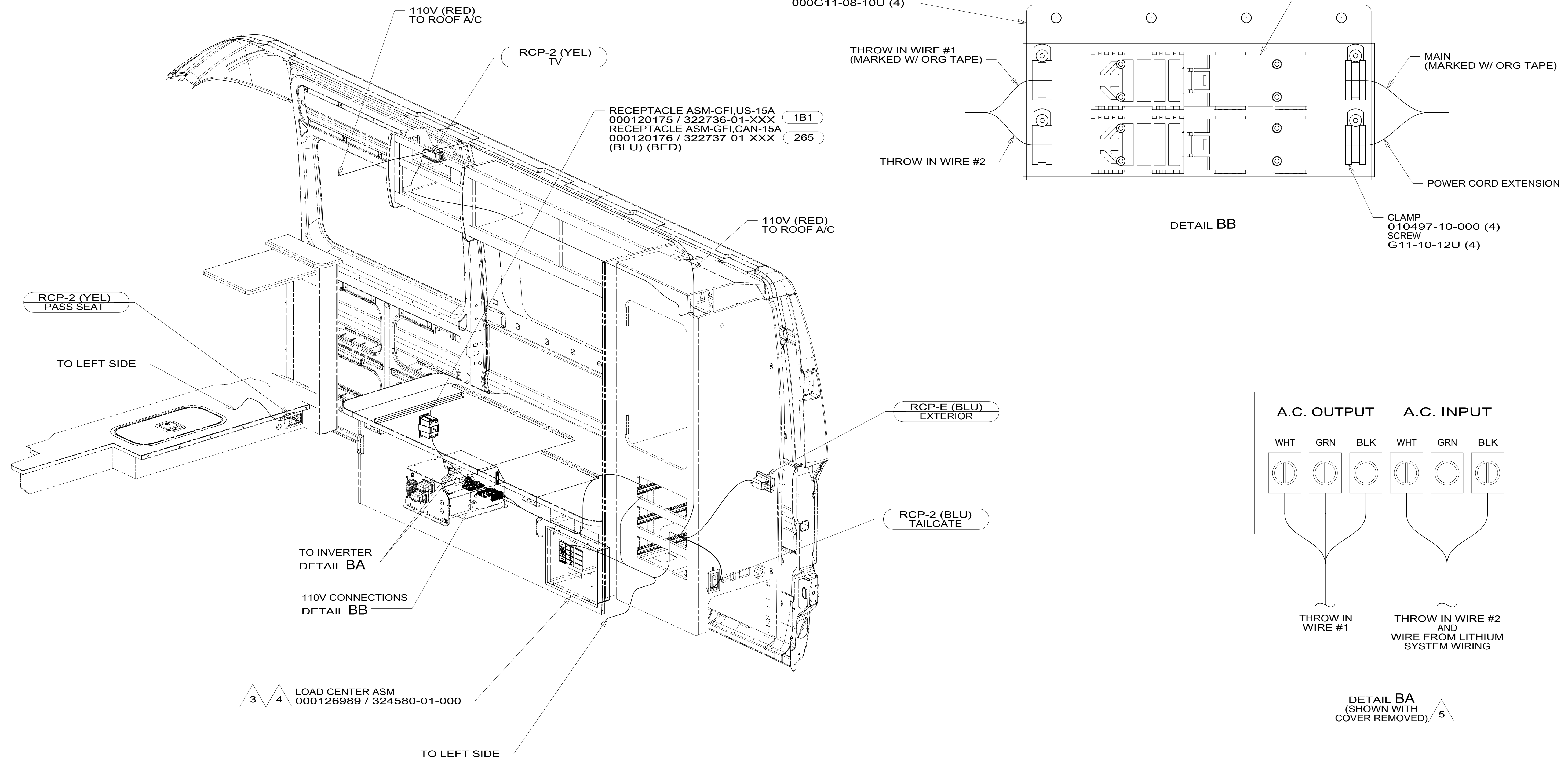
**WINNEBAGO**  
COPYRIGHT 2016 WINNEBAGO INDUSTRIES, INC.

DSNR:	ALL DIMENSIONS ARE IN MILLIMETERS
DFFR:	
UNSPECIFIED TOLERANCES:	MATERIAL:
WHOLE DIM (X) : 3	
ONE-PLACE (X.X) : 1.5	
TWO-PLACE (X.XX) : 0.50	
ANGLE : 1°	
REFER TO ES0018 FOR FASTENER TIGHTENING GUIDELINES	WEIGHT: (LBS) FIRST USED: 19 259KL
DESCRIPTION: <b>WIRING INSTL-BODY, 110V</b>	
SHEET: 1 OF 4	ITEM/PART NO: 000124765 / 32399801000

FOR ELECTRICAL TORQUE SPECIFICATIONS SEE DWG NO. 128783-01-000

X-X FOR ELECTRICAL CALLOUTS SEE DWG NO. 121339-01-000

8 7 6 5 4 3 2 1



DETAIL BA (SHOWN WITH COVER REMOVED) 5

- NOTES:
- 5 CONNECT WHT TO WHT, BLK TO BLK, AND BARE TO GRN.
  - 4 GROUND WIRE (8 GA WIRE) FROM LOAD CENTER ROUTES THROUGH FLOOR TO GROUND BOLT.
  - 3 LOAD CENTER GROUND WIRE MUST BE ATTACHED DIRECTLY TO CHASSIS GROUND.
  - 2. ALL 110V WIRES TO BE CLAMPED WITH CLAMP 10497-05-000 WITHIN 200MM OF OUTLET BOXES, USE SCREW G67-10-12B.
  - 1. AT MINIMUM ALL WIRES TO BE SUPPORTED AND SECURED PER CODE REQUIREMENTS. USE CLAMP 10495 OR 10497 OR WIRE TIE 8343 OR 108046 AND SCREW G67-XX-XXX OR G56-XX-XXX AS APPROPRIATE FOR INSTALLATION.

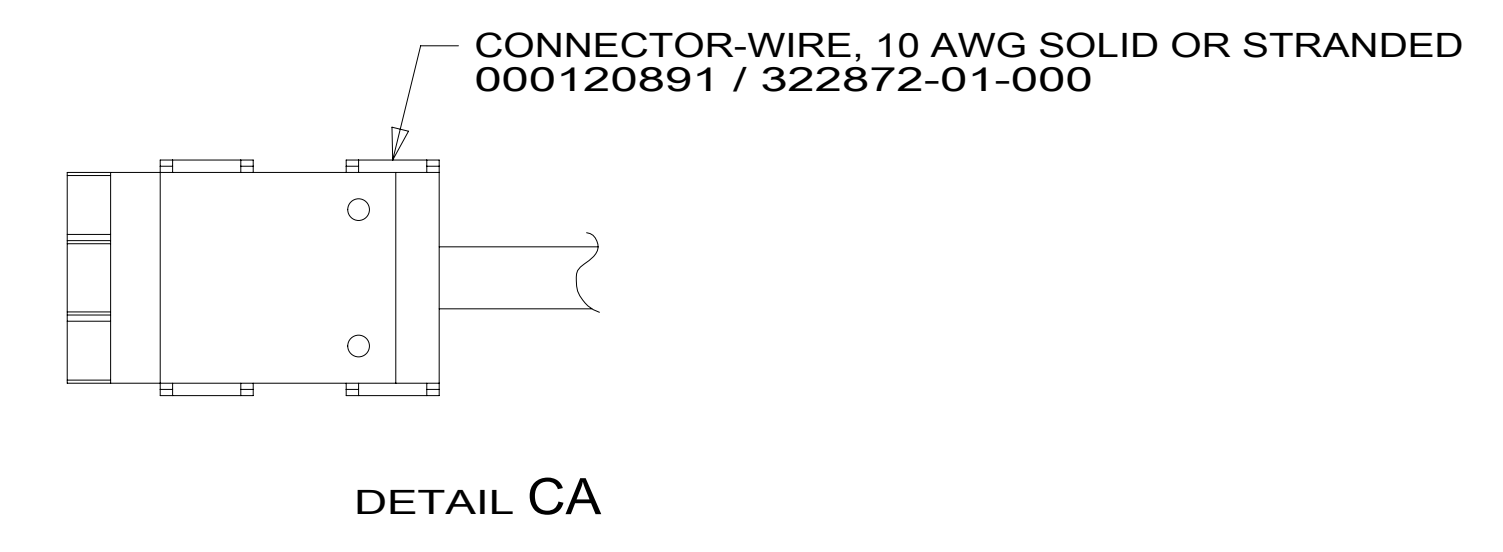
265 CODES/STANDARDS-CSA/CMVSS  
 1B1 CODES/STANDARDS USA

FOR ELECTRICAL TORQUE SPECIFICATIONS SEE DWG NO. 128783-01-000

FOR ELECTRICAL CALLOUTS SEE DWG NO. 121339-01-000

DESCRIPTION:	
1B1 265	
<b>WIRING INSTL-BODY, 110V</b>	
SHEET:	ITEM/PART NO. REV
2 OF 4	000124765 / 32399801000

RED	1B1	136135-07-054	
	265	136136-07-054	
YEL	1B1	136131-05-170	
	265	136134-05-170	
BLK	1B1	136131-06-060	
	265	136134-06-060	
BLU	1B1	136131-02-172	
	265	136134-02-172	
WHT	1B1	136135-09-030	
	265	136136-09-030	
MAIN	1B1	136137-01-032	6 7
	265	136138-01-032	6 7
GROUND MAIN		136145-05-030	4
POWER CORD EXTENSION	1B1	136137-01-066	6
	265	136138-01-066	6
CORD-POWER ASM		183140-01-000	5
THROW IN WIRE #1	1B1	136137-01-006	6 7
	265	136138-01-006	6 7
THROW IN WIRE #2	1B1	136137-01-006	6
	265	136138-01-006	6



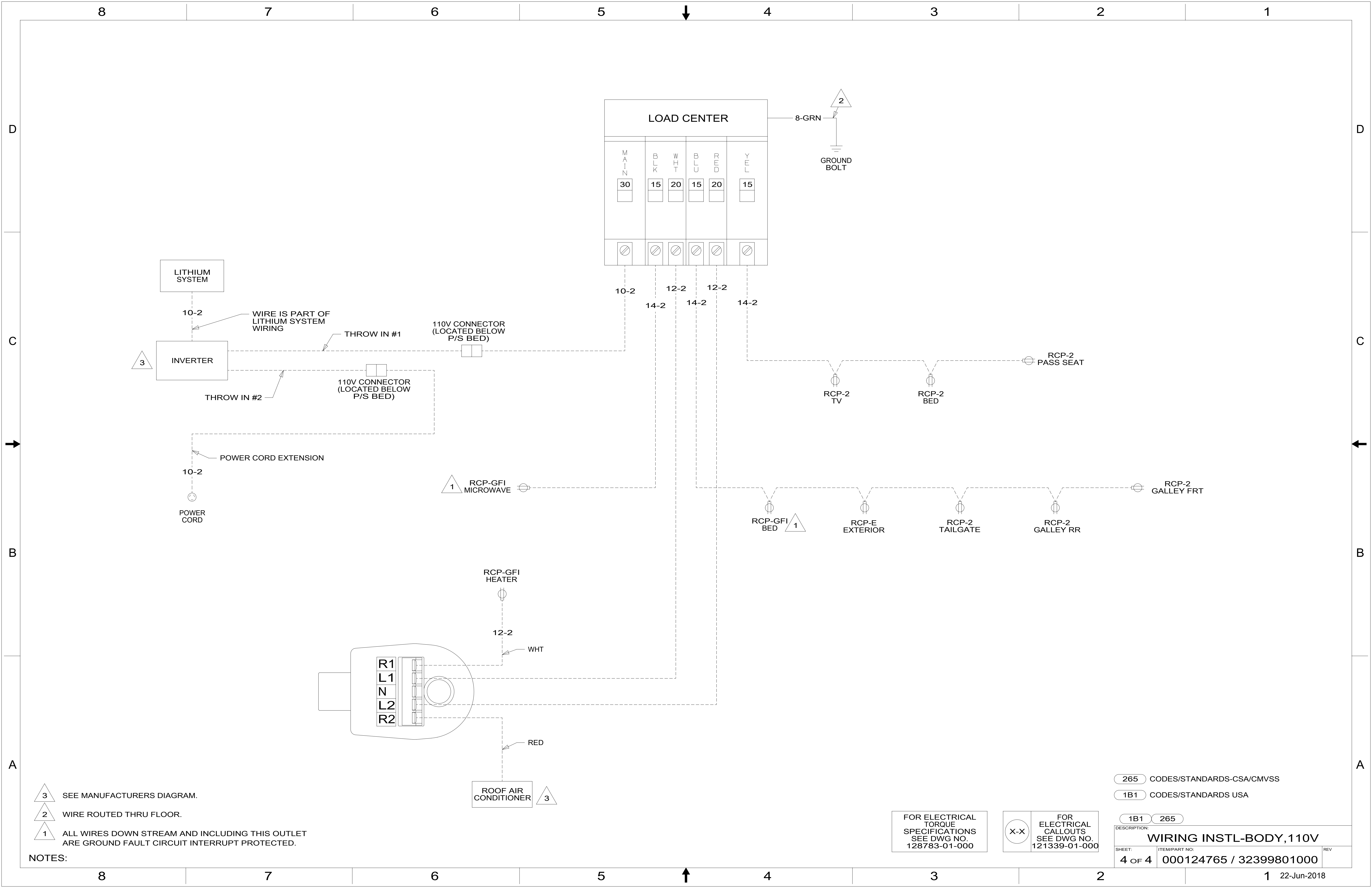
- NOTES:
- 7 ORG TAPE TO BE APPLIED TO BOTH ENDS.
  - 6 FOR CONNECTOR INSTALLATION SEE DETAIL CA.
  - 5 DO NOT HI-POT POWER CORD, LED INDICATOR LIGHT MAY FAIL.
  - 4 GROUND WIRES TO BE INSTALLED ON MFG LINE. SHIP GROUND WIRES LOOSE WITH LOAD CENTER.
  - 3. SEE WIRING INSTL-BODY, 12V FOR ADDITIONAL INFORMATION.
  - 2. SECURE WIRES TO BACKSIDE OF LOAD CENTER WITH WIRE TIE 116673-01-000.
  - 1. ALL GROUNDS WIRES TO BE COVERED WITH TUBING 8041-02-000.

FOR ELECTRICAL TORQUE SPECIFICATIONS SEE DWG NO. 128783-01-000

FOR ELECTRICAL CALLOUTS SEE DWG NO. 121339-01-000

265 CODES/STANDARDS-CSA/CMVSS  
1B1 CODES/STANDARDS USA

DESCRIPTION:	1B1 265	
<b>WIRING INSTL-BODY, 110V</b>		
SHEET:	ITEM/PART NO:	REV
3 OF 4	000124765 / 32399801000	



- NOTES:**
- 3 SEE MANUFACTURERS DIAGRAM.
  - 2 WIRE ROUTED THRU FLOOR.
  - 1 ALL WIRES DOWN STREAM AND INCLUDING THIS OUTLET ARE GROUND FAULT CIRCUIT INTERRUPT PROTECTED.

FOR ELECTRICAL TORQUE SPECIFICATIONS SEE DWG NO. 128783-01-000

FOR ELECTRICAL CALLOUTS SEE DWG NO. 121339-01-000

- 265 CODES/STANDARDS-CSA/CMVSS
- 1B1 CODES/STANDARDS USA

DESCRIPTION:		1B1	265
<b>WIRING INSTL-BODY, 110V</b>			
SHEET:	ITEM/PART NO.:	REV	
4 OF 4	000124765 / 32399801000		