

CIRCUIT BREAKER-20 AMP
93654-03-000
SCREW
G52-06-04U
G52-06-05U
SPACER-CIRCUIT BREAKER
141789-01-000

CIRCUIT BREAKER-6 AMP
93654-01-000
SCREW
G52-06-04U
G52-06-05U
SPACER-CIRCUIT BREAKER
141789-01-000

CIRCUIT BREAKER-15 AMP
93654-02-000
SCREW
G52-06-05U
SPACER-CIRCUIT BREAKER
141789-01-000

CIRCUIT BREAKER-30 AMP
93655-02-000
SPACER-CIRCUIT BREAKER
141789-01-000
SCREW
G52-06-04U
G52-06-05U

CIRCUIT BREAKER-55 AMP
113482-01-000
SCREW
G19-10-08U

CIRCUIT BREAKER-6 AMP
93654-01-000
SCREW
G52-06-04U
G52-06-05U
SPACER-CIRCUIT BREAKER
141789-01-000

CIRCUIT BREAKER-55 AMP
113482-01-000
SCREW
G19-10-08U

CIRCUIT BREAKER-30 AMP
93655-02-000
SPACER-CIRCUIT BREAKER
141789-01-000
SCREW
G52-06-05U (2)

LABEL-CIRCUIT BREAKER
93236-53-000

PLATE-CIRCUIT BREAKER
118531-11-CHT
SCREW
G39-08-089 (2)

CIRCUIT BREAKER-30 AMP
93655-02-000
SPACER-CIRCUIT BREAKER
141789-01-000
SCREW
G52-06-04U
G52-06-05U

CIRCUIT BREAKER-30 AMP
93655-02-000
SPACER-CIRCUIT BREAKER
141789-01-000
SCREW
G52-06-04U (2)

SLOT TO BE ORIENTED
BELOW BREAKER HOLES

- 2 USE THE LONGER SCREW TO PROPERLY ATTACH BREAKER TO BUSS BAR.
- 1 REPLACE EXISTING SCREW TO PROPERLY ATTACH BREAKER TO BUSS BAR.

FOR ELECTRICAL
TORQUE
SPECIFICATIONS
SEE DWG NO.
128783-01-000

FOR
ELECTRICAL
CALLOUTS
SEE DWG NO.
121339-01-000

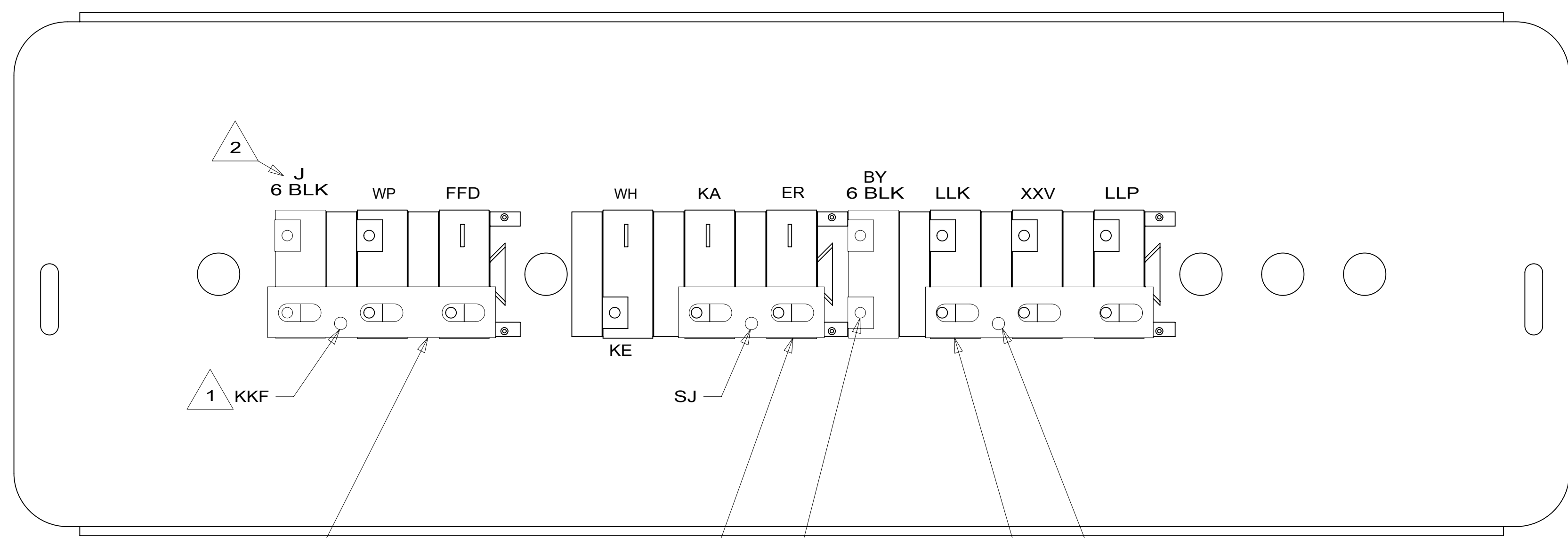
- 265 CODES/STANDARDS-CSA/CMVSS
- 1B1 CODES/STANDARDS USA
- 1B1 265

WINNEBAGO
COPYRIGHT 2016 WINNEBAGO INDUSTRIES, INC.

DSNR:	ALL DIMENSIONS ARE IN MILLIMETERS
DIFFR:	
UNSPECIFIED TOLERANCES:	MATERIAL:
WHOLE DIM (X) : 3	
ONE-PLACE (X.X) : 1.5	
TWO-PLACE (X.XX) : 0.50	
ANGLE : 1°	
REFER TO ES0018 FOR FASTENER TIGHTENING GUIDELINES	WEIGHT: (LBS) FIRST USED: 18 E27N
DESCRIPTION: CHASSIS ELECTRICAL BOX ASM	
SHEET: 1 OF 3	ITEM/PART NO: 000124573 / 32395301000
REV:	REF: 1 25-Jun-2019

8 7 6 5 4 3 2 1

D
C
B
A



BUSS BAR 141744-02-000
 BUSS BAR 141744-01-000
 6 GA SINGLE CABLE
 BUSS BAR 141744-02-000

DETAIL BA

- NOTES:
- 4 WIRE MARKED WITH RED TAPE.
 - 3 WIRE MARKED WITH PURPLE TAPE.
 - 2 WIRE MARKED WITH YELLOW TAPE.
 - 1 WIRE MARKED WITH 2 WRAPS OF YELLOW TAPE.

FOR ELECTRICAL TORQUE SPECIFICATIONS SEE DWG NO. 128783-01-000

FOR ELECTRICAL CALLOUTS SEE DWG NO. 121339-01-000

265 CODES/STANDARDS-CSA/CMVSS
 1B1 CODES/STANDARDS USA

DESCRIPTION:	
1B1 265	
CHASSIS ELECTRICAL BOX ASM	
SHEET:	ITEM/PART NO. REV
2 OF 3	000124573 / 32395301000

8 7 6 5 4 3 2 1 25-Jun-2019

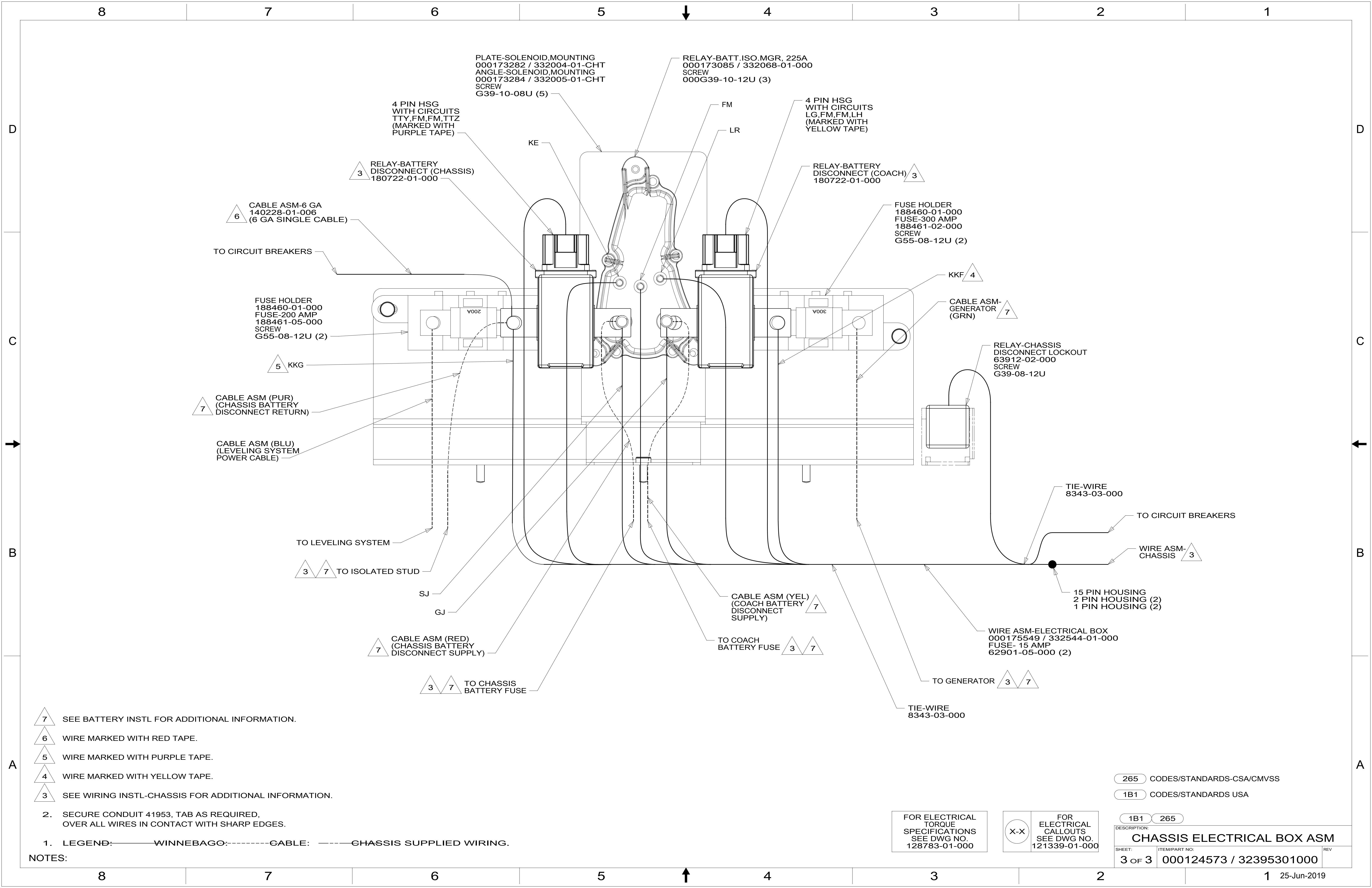


PLATE-SOLENOID, MOUNTING
000173282 / 332004-01-CHT
ANGLE-SOLENOID, MOUNTING
000173284 / 332005-01-CHT
SCREW
G39-10-08U (5)

RELAY-BATT. ISO. MGR, 225A
000173085 / 332068-01-000
SCREW
000G39-10-12U (3)

4 PIN HSG
WITH CIRCUITS
TTY, FM, FM, TTZ
(MARKED WITH
PURPLE TAPE)

4 PIN HSG
WITH CIRCUITS
LG, FM, FM, LH
(MARKED WITH
YELLOW TAPE)

RELAY-BATTERY
DISCONNECT (CHASSIS)
180722-01-000

RELAY-BATTERY
DISCONNECT (COACH)
180722-01-000

CABLE ASM-6 GA
140228-01-006
(6 GA SINGLE CABLE)

FUSE HOLDER
188460-01-000
FUSE-300 AMP
188461-02-000
SCREW
G55-08-12U (2)

TO CIRCUIT BREAKERS

FUSE HOLDER
188460-01-000
FUSE-200 AMP
188461-05-000
SCREW
G55-08-12U (2)

KKF 4

5 KKG

CABLE ASM-
GENERATOR
(GRN) 7

CABLE ASM (PUR)
(CHASSIS BATTERY
DISCONNECT RETURN) 7

RELAY-CHASSIS
DISCONNECT LOCKOUT
63912-02-000
SCREW
G39-08-12U

CABLE ASM (BLU)
(LEVELING SYSTEM
POWER CABLE)

TIE-WIRE
8343-03-000

TO LEVELING SYSTEM

TO CIRCUIT BREAKERS

3 7 TO ISOLATED STUD

WIRE ASM-
CHASSIS 3

SJ

CABLE ASM (YEL)
(COACH BATTERY
DISCONNECT
SUPPLY) 7

15 PIN HOUSING
2 PIN HOUSING (2)
1 PIN HOUSING (2)

GJ

TO COACH
BATTERY FUSE 3 7

WIRE ASM-ELECTRICAL BOX
000175549 / 332544-01-000
FUSE- 15 AMP
62901-05-000 (2)

CABLE ASM (RED)
(CHASSIS BATTERY
DISCONNECT SUPPLY) 7

TO GENERATOR 3 7

3 7 TO CHASSIS
BATTERY FUSE

TIE-WIRE
8343-03-000

7 SEE BATTERY INSTL FOR ADDITIONAL INFORMATION.

6 WIRE MARKED WITH RED TAPE.

5 WIRE MARKED WITH PURPLE TAPE.

4 WIRE MARKED WITH YELLOW TAPE.

3 SEE WIRING INSTL-CHASSIS FOR ADDITIONAL INFORMATION.

2. SECURE CONDUIT 41953, TAB AS REQUIRED,
OVER ALL WIRES IN CONTACT WITH SHARP EDGES.

1. LEGEND: — WINNEBAGO: - - - - - CABLE: ····· CHASSIS SUPPLIED WIRING.

NOTES:

265 CODES/STANDARDS-CSA/CMVSS

1B1 CODES/STANDARDS USA

FOR ELECTRICAL
TORQUE
SPECIFICATIONS
SEE DWG NO.
128783-01-000

FOR
ELECTRICAL
CALLOUTS
SEE DWG NO.
121339-01-000

DESCRIPTION:	1B1 265
CHASSIS ELECTRICAL BOX ASM	
SHEET:	ITEM/PART NO:
3 OF 3	000124573 / 32395301000
REV	