

8 7 6 5 4 3 2 1

D

D

C

C

B

B

A

A

→

←

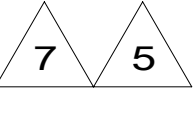
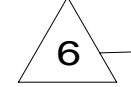


WIRE ASM-ADAPTOR,FORD  
000022154 / 314397-01-000  
FUSE-5 AMP  
62901-02-000

LIGHT-DOME  
86280-01-000  
SCREW  
G67-10-12U (2)  
CONNECTOR  
58028-01-000 (2)

200 DROP TO  
BATTERY BOOST  
SWITCH  
VIEW BD

TO DASH  
RADIO



WIRE ASM-FUEL  
TANK EXTENSION  
172924-01-000

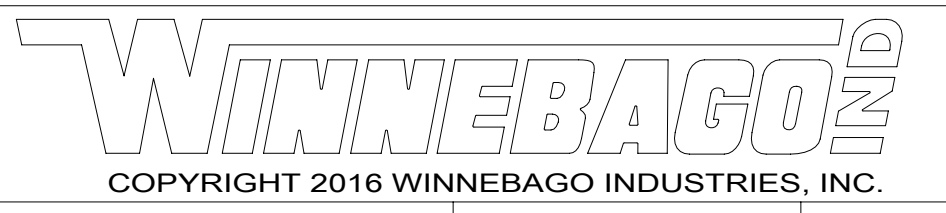
BATTERY CABLES  
TO INVERTER  
CABLE ASM-INVERTER  
CASE GROUND



265 CODES/STANDARDS-CSA/CMVSS

1B1 CODES/STANDARDS USA

1B1 265



DSNR:		ALL DIMENSIONS ARE IN MILLIMETERS	
DIFFR:		MATERIAL:	
UNSPECIFIED TOLERANCES:			
WHOLE DIM (X)	: 3		
ONE-PLACE (X.X)	: 1.5		
TWO-PLACE (X.XX)	: 0.50		
ANGLE	: 1°		
REFER TO ES0018 FOR FASTENER TIGHTENING GUIDELINES		WEIGHT: (LBS)	FIRST USED:
			19 931N

DESCRIPTION: <b>WIRING INSTL-CHASSIS</b>		
SHEET: 1 OF 2	ITEM/PART NO.: 000123878 / 32618901000	REV:

FOR ELECTRICAL  
TORQUE  
SPECIFICATIONS  
SEE DWG NO.  
128783-01-000

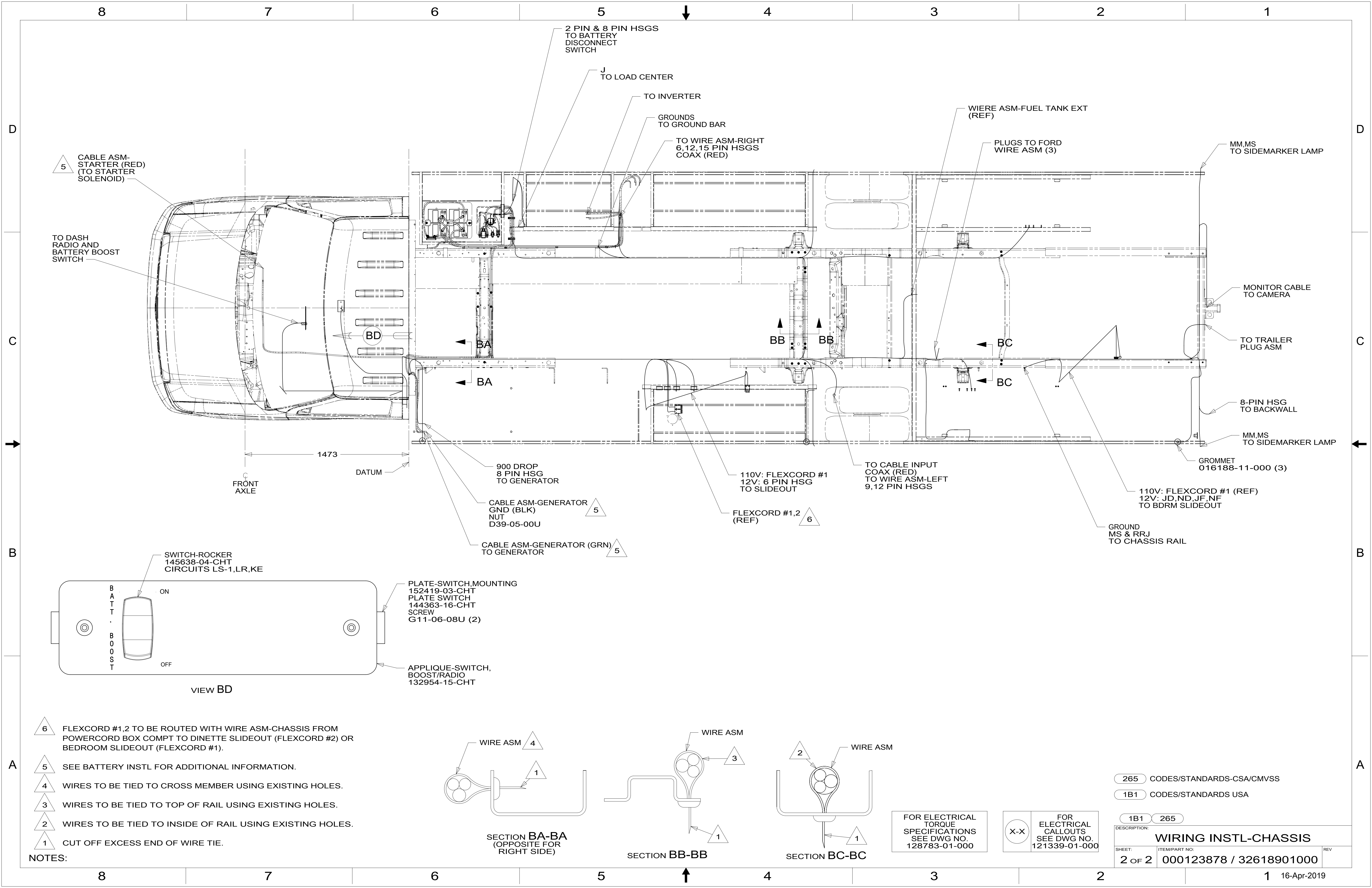
FOR ELECTRICAL  
CALLOUTS  
SEE DWG NO.  
121339-01-000

- 7 SEE WIRING INSTL-BODY,110V FOR  
ADDITIONAL INFORMATION.
- 6 FUSE LOCATED UNDER DASH BY STEERING COLUMN.
- 5 SEE BATTERY INSTL FOR ADDITIONAL INFORMATION.
- 4 CUT LIGHT GREEN/RED WIRE FROM PARK  
BRAKE SWITCH AND RECONNECT TO CIRCUIT  
DY OF CHASSIS ASM AS SHOWN.
- 3 SEE RADIO/MONITOR INSTL FOR ADDITIONAL INFORMATION.

2. USE WIRE TIES 8343-04-000 AND 116673-02-000 APPROXIMATELY  
600MM ON CENTER UNLESS OTHERWISE SPECIFIED.
1. SECURE CONDUIT 41953, TAB AS REQUIRED,  
OVER ALL WIRES IN CONTACT WITH SHARP EDGES.

NOTES:

8 7 6 5 4 3 2 1



5 CABLE ASM-STARTER (RED) (TO STARTER SOLENOID)

TO DASH RADIO AND BATTERY BOOST SWITCH

2 PIN & 8 PIN HSGS TO BATTERY DISCONNECT SWITCH

J TO LOAD CENTER

TO INVERTER

GROUNDS TO GROUND BAR

TO WIRE ASM-RIGHT 6,12,15 PIN HSGS COAX (RED)

WIERS ASM-FUEL TANK EXT (REF)

PLUGS TO FORD WIRE ASM (3)

MM,MS TO SIDEMARKER LAMP

FRONT AXLE

1473 DATUM

900 DROP 8 PIN HSG TO GENERATOR

CABLE ASM-GENERATOR GND (BLK) NUT D39-05-00U

CABLE ASM-GENERATOR (GRN) TO GENERATOR

110V: FLEXCORD #1 12V: 6 PIN HSG TO SLIDEOUT

FLEXCORD #1,2 (REF)

TO CABLE INPUT COAX (RED) TO WIRE ASM-LEFT 9,12 PIN HSGS

110V: FLEXCORD #1 (REF) 12V: JD,ND,JF,NF TO BDRM SLIDEOUT

GROUND MS & RRJ TO CHASSIS RAIL

GROMMET 016188-11-000 (3)

8-PIN HSG TO BACKWALL

TO TRAILER PLUG ASM

MONITOR CABLE TO CAMERA

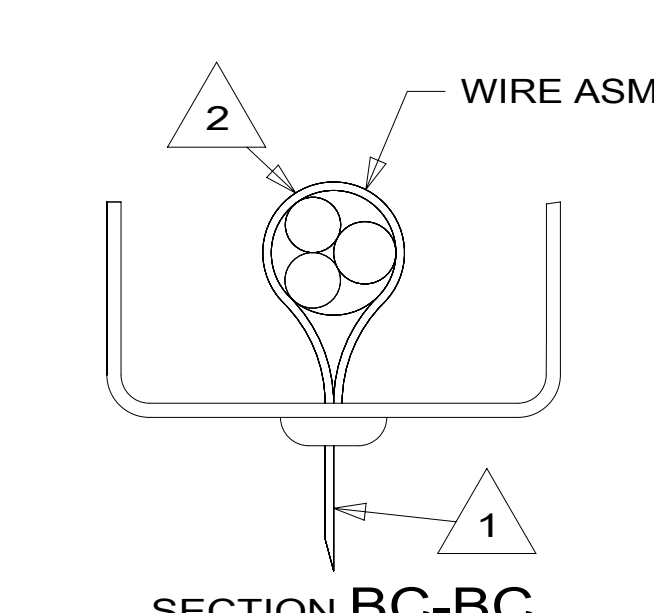
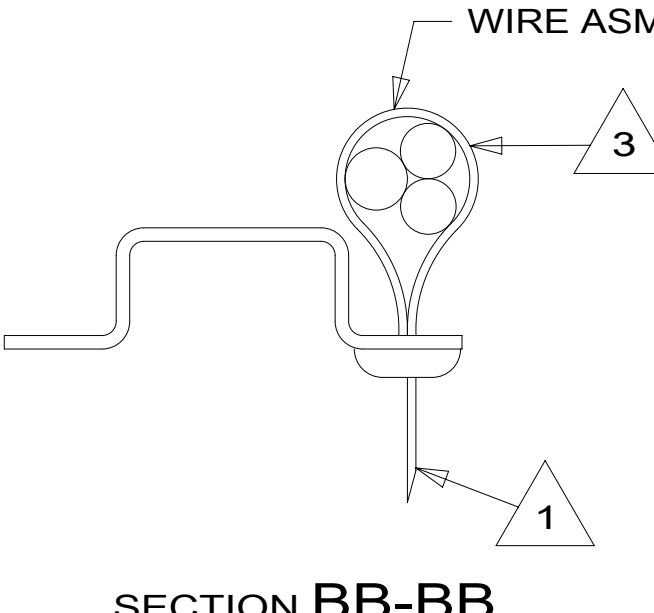
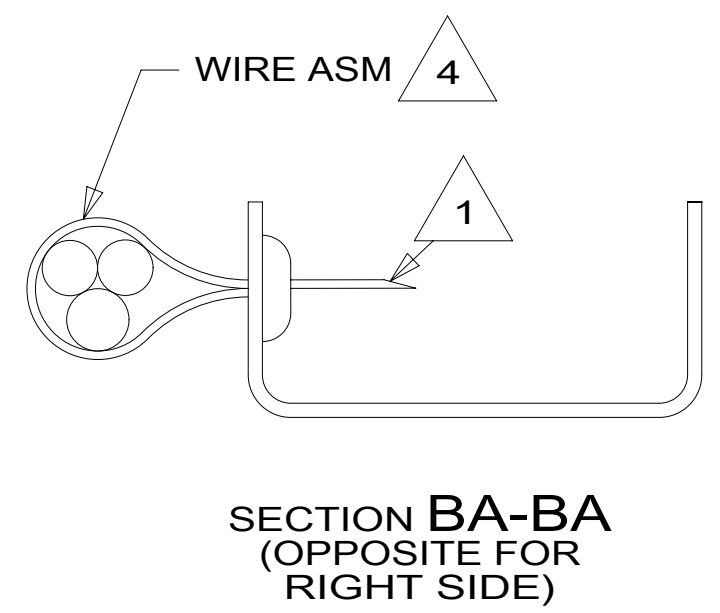
SWITCH-ROCKER 145638-04-CHT CIRCUITS LS-1,LR,KE

PLATE-SWITCH MOUNTING 152419-03-CHT PLATE SWITCH 144363-16-CHT SCREW G11-06-08U (2)

APPLIQUE-SWITCH, BOOST/RADIO 132954-15-CHT

VIEW BD

- NOTES:
- 6 FLEXCORD #1,2 TO BE ROUTED WITH WIRE ASM-CHASSIS FROM POWERCORD BOX COMPT TO DINETTE SLIDEOUT (FLEXCORD #2) OR BEDROOM SLIDEOUT (FLEXCORD #1).
  - 5 SEE BATTERY INSTL FOR ADDITIONAL INFORMATION.
  - 4 WIRES TO BE TIED TO CROSS MEMBER USING EXISTING HOLES.
  - 3 WIRES TO BE TIED TO TOP OF RAIL USING EXISTING HOLES.
  - 2 WIRES TO BE TIED TO INSIDE OF RAIL USING EXISTING HOLES.
  - 1 CUT OFF EXCESS END OF WIRE TIE.



FOR ELECTRICAL TORQUE SPECIFICATIONS SEE DWG NO. 128783-01-000

FOR ELECTRICAL CALLOUTS SEE DWG NO. 121339-01-000

265 CODES/STANDARDS-CSA/CMVSS  
1B1 CODES/STANDARDS USA

DESCRIPTION: <b>WIRING INSTL-CHASSIS</b>	
SHEET: 2 OF 2	ITEM/PART NO: 000123878 / 32618901000
REV	