

- NOTES:
- 1. AT MINIMUM ALL WIRES TO BE SUPPORTED AND SECURED PER CODE REQUIREMENTS. USE CLAMP 10495 OR 10497 OR WIRE TIE 8343 OR 108046 AND SCREW G67-XX-XXX OR G56-XX-XXX AS APPROPRIATE FOR INSTALLATION.
 - 2. ALL 110V WIRE TO BE CLAMPED WITH CLAMP 10495-05-000 WITHIN 200MM OF OUTLET BOXES, USE SCREW G67-10-12U.

- 3. ROUTE WIRE THRU FLOOR.
- 4. WIRE ROUTED IN FLOOR.
- 5. SEE LOAD CENTER ASM FOR ADDITIONAL INFORMATION.
- 6. RCP-B AND CLAMPS TO BE MOUNTED ON SIDE OF COMPARTMENT USING PILOT HOLES PROVIDED.
- 7. 110V CONNECTORS AND CABLE CLAMPS TO BE MOUNTED TO BOTTOM OF FLOOR.
- 8. FLEX CORDS ARE ROUTED WITH WIRE ASM-CHASSIS.
- 9. SEE BATTERY INSTL FOR ADDITIONAL INFORMATION.
- 10. SEE GENERATOR INSTL FOR ADDITIONAL INFORMATION.

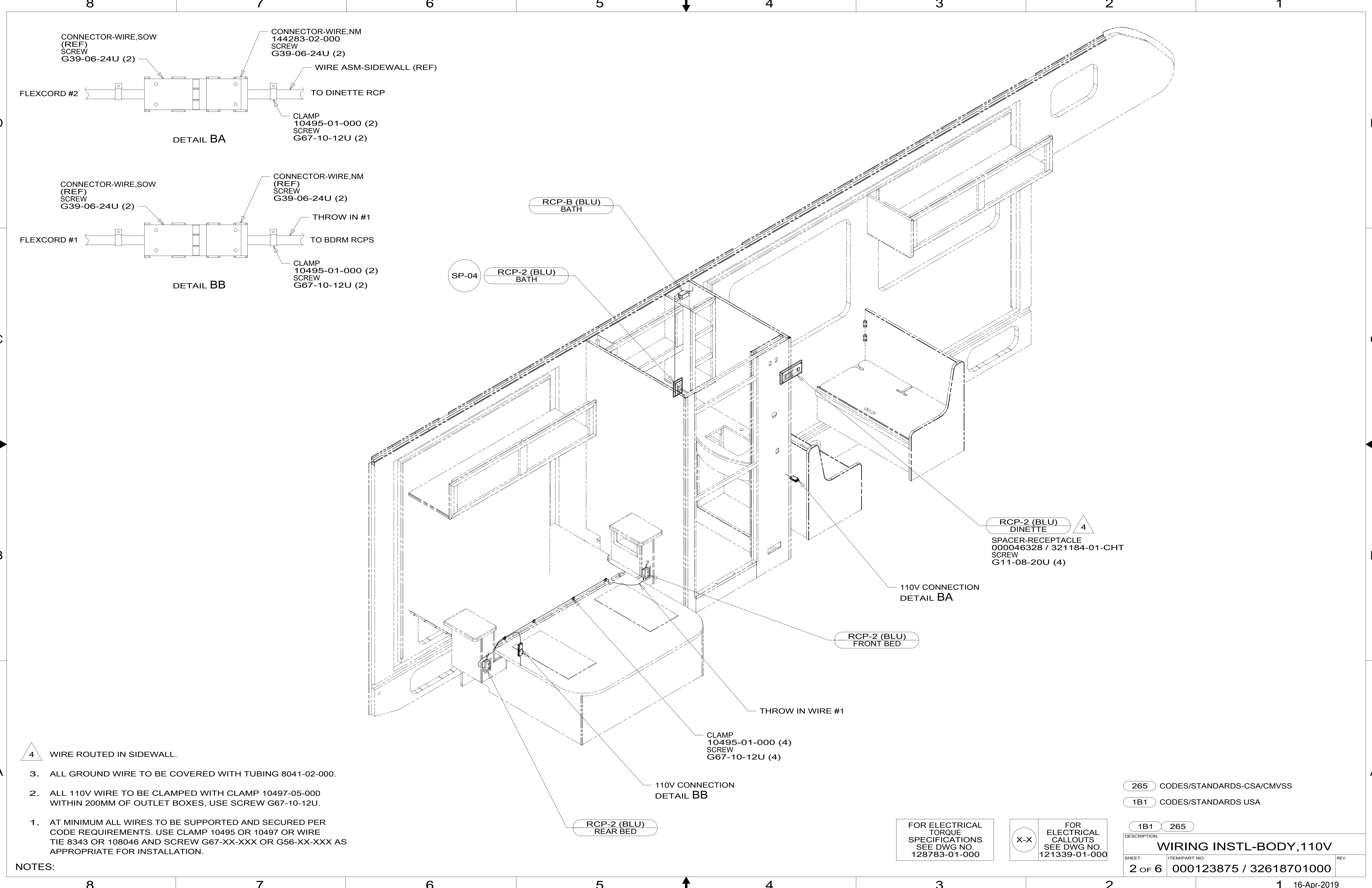
FOR ELECTRICAL TORQUE SPECIFICATIONS SEE DWG NO. 128783-01-000

FOR ELECTRICAL CALLOUTS SEE DWG NO. 121339-01-000

- 265 CODES/STANDARDS-CSA/CMVSS
- 1B1 CODES/STANDARDS USA

WINNEBAGO
COPYRIGHT 2016 WINNEBAGO INDUSTRIES, INC.

DSNR:	ALL DIMENSIONS ARE IN MILLIMETERS	
DFFR:	MATERIAL:	
UNSPECIFIED TOLERANCES:	WEIGHT: (LBS)	FIRST USED:
WHOLE DIM (X) : 3		19 931N
ONE-PLACE (X.X) : 1.5		
TWO-PLACE (X.XX) : 0.50		
ANGLE : 1°		
REFER TO ES0018 FOR FASTENER TIGHTENING GUIDELINES		
DESCRIPTION: WIRING INSTL-BODY, 110V		
SHEET: 1 OF 6	ITEM/PART NO: 000123875 / 32618701000	REV:



- 4 WIRE ROUTED IN SIDEWALL.
3. ALL GROUND WIRE TO BE COVERED WITH TUBING 8041-02-000.
2. ALL 110V WIRE TO BE CLAMPED WITH CLAMP 10497-05-000 WITHIN 200MM OF OUTLET BOXES, USE SCREW G67-10-12U.
1. AT MINIMUM ALL WIRES TO BE SUPPORTED AND SECURED PER CODE REQUIREMENTS. USE CLAMP 10495 OR 10497 OR WIRE TIE 8343 OR 108046 AND SCREW G67-XX-XXX OR G56-XX-XXX AS APPROPRIATE FOR INSTALLATION.

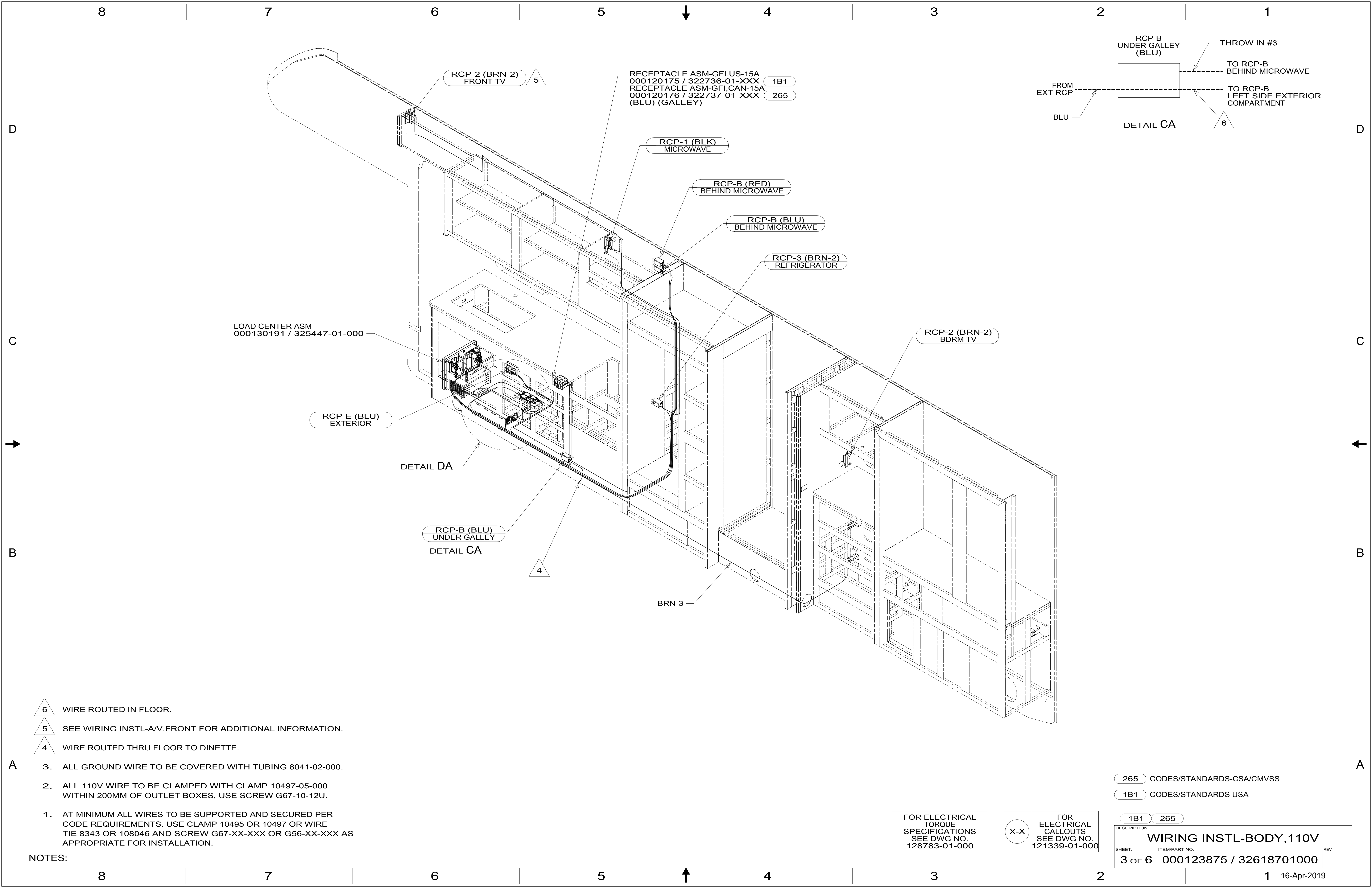
NOTES:

FOR ELECTRICAL TORQUE SPECIFICATIONS SEE DWG NO. 128783-01-000

FOR ELECTRICAL CALLOUTS SEE DWG NO. 121339-01-000

265 CODES/STANDARDS-CSA/CMVSS
1B1 CODES/STANDARDS USA

DESCRIPTION:		1B1 265	
WIRING INSTL-BODY, 110V			
SHEET:	ITEM/PART NO.:	REV	
2 OF 6	000123875 / 32618701000		



RECEPTACLE ASM-GFI,US-15A
000120175 / 322736-01-XXX 1B1
RECEPTACLE ASM-GFI,CAN-15A
000120176 / 322737-01-XXX 265
(BLU) (GALLEY)

LOAD CENTER ASM
000130191 / 325447-01-000

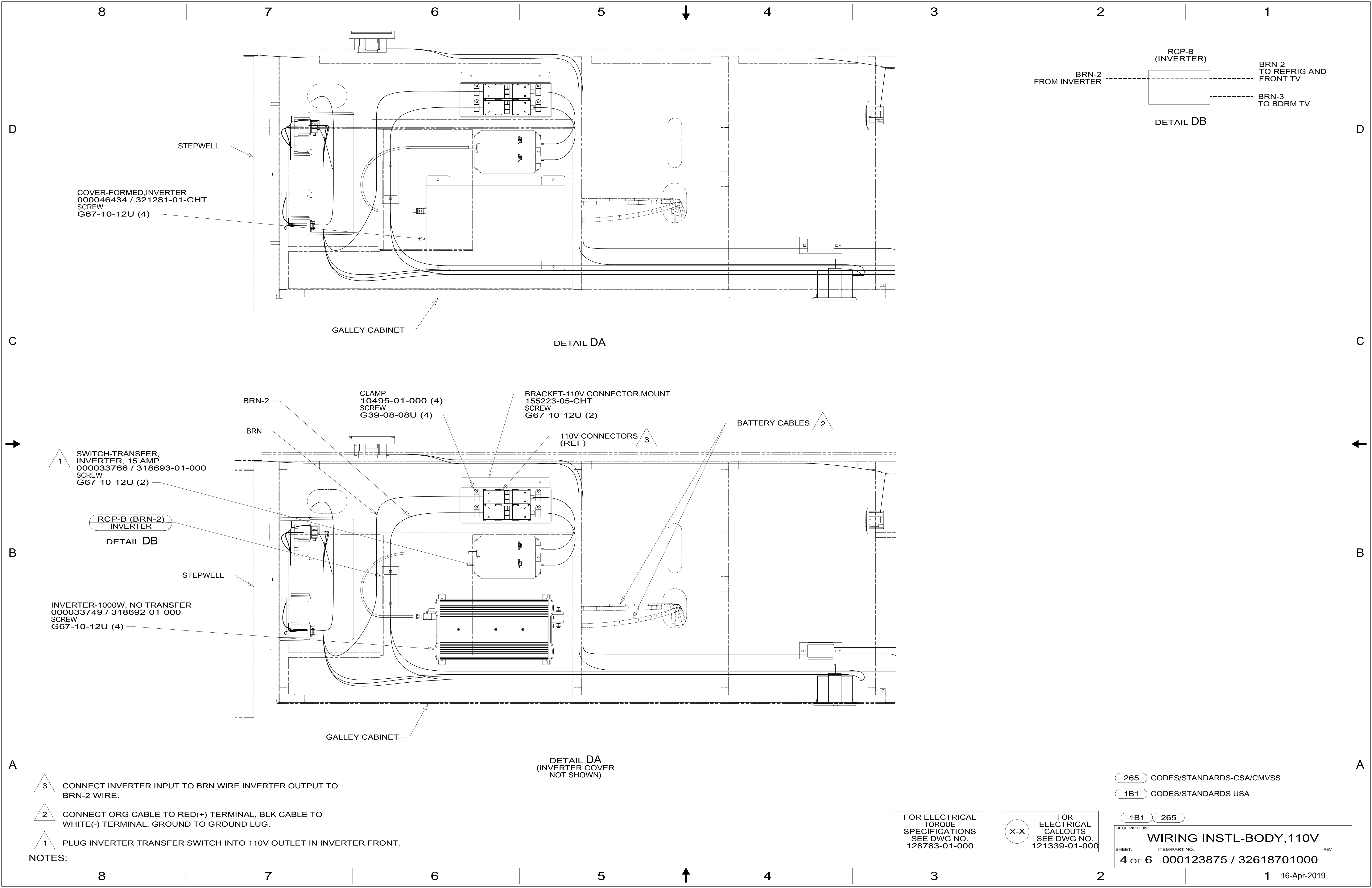
- NOTES:
- 6 WIRE ROUTED IN FLOOR.
 - 5 SEE WIRING INSTL-A/V,FRONT FOR ADDITIONAL INFORMATION.
 - 4 WIRE ROUTED THRU FLOOR TO DINETTE.
 - 3. ALL GROUND WIRE TO BE COVERED WITH TUBING 8041-02-000.
 - 2. ALL 110V WIRE TO BE CLAMPED WITH CLAMP 10497-05-000 WITHIN 200MM OF OUTLET BOXES, USE SCREW G67-10-12U.
 - 1. AT MINIMUM ALL WIRES TO BE SUPPORTED AND SECURED PER CODE REQUIREMENTS. USE CLAMP 10495 OR 10497 OR WIRE TIE 8343 OR 108046 AND SCREW G67-XX-XXX OR G56-XX-XXX AS APPROPRIATE FOR INSTALLATION.

265 CODES/STANDARDS-CSA/CMVSS
1B1 CODES/STANDARDS USA

FOR ELECTRICAL TORQUE SPECIFICATIONS SEE DWG NO. 128783-01-000

FOR ELECTRICAL CALLOUTS SEE DWG NO. 121339-01-000

DESCRIPTION:	
WIRING INSTL-BODY, 110V	
SHEET:	ITEM/PART NO. REV
3 OF 6	000123875 / 32618701000

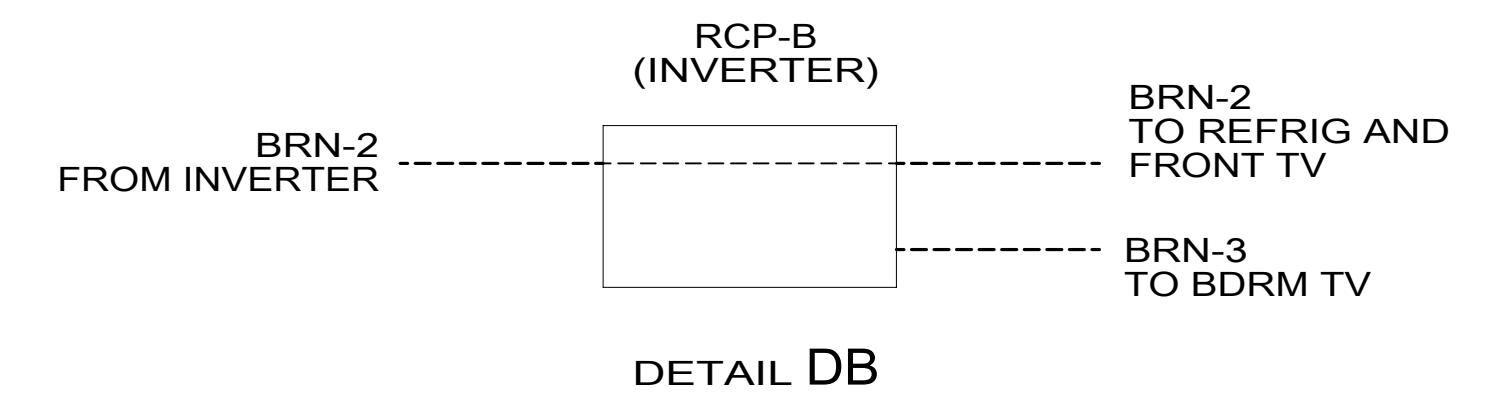


COVER-FORMED, INVERTER
000046434 / 321281-01-CHT
SCREW
G67-10-12U (4)

STEPWELL

GALLEY CABINET

DETAIL DA



1 SWITCH-TURN, INVERTER, 15 AMP
000033766 / 318693-01-000
SCREW
G67-10-12U (2)

RCP-B (BRN-2)
INVERTER
DETAIL DB

STEPWELL

INVERTER-1000W, NO TRANSFER
000033749 / 318692-01-000
SCREW
G67-10-12U (4)

GALLEY CABINET

DETAIL DA
(INVERTER COVER
NOT SHOWN)

- NOTES:
- 3 CONNECT INVERTER INPUT TO BRN WIRE INVERTER OUTPUT TO BRN-2 WIRE.
 - 2 CONNECT ORG CABLE TO RED(+) TERMINAL, BLK CABLE TO WHITE(-) TERMINAL, GROUND TO GROUND LUG.
 - 1 PLUG INVERTER TRANSFER SWITCH INTO 110V OUTLET IN INVERTER FRONT.

CLAMP
10495-01-000 (4)
SCREW
G39-08-08U (4)

BRACKET-110V CONNECTOR, MOUNT
155223-05-CHT
SCREW
G67-10-12U (2)

110V CONNECTORS
(REF)

BATTERY CABLES 2

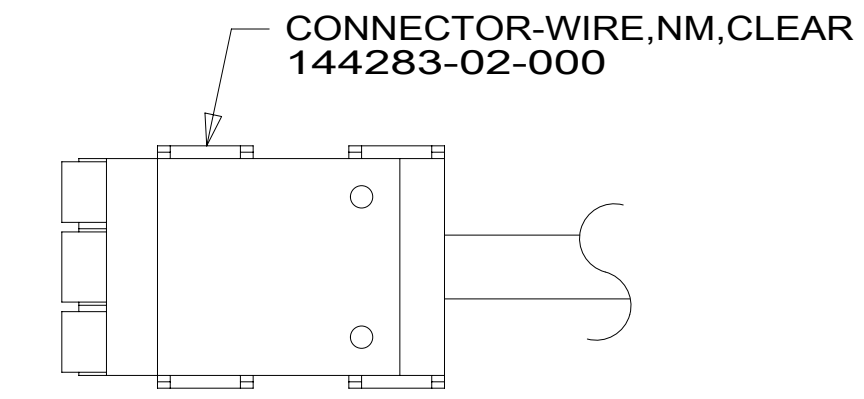
FOR ELECTRICAL
TORQUE
SPECIFICATIONS
SEE DWG NO.
128783-01-000

FOR
ELECTRICAL
CALLOUTS
SEE DWG NO.
121339-01-000

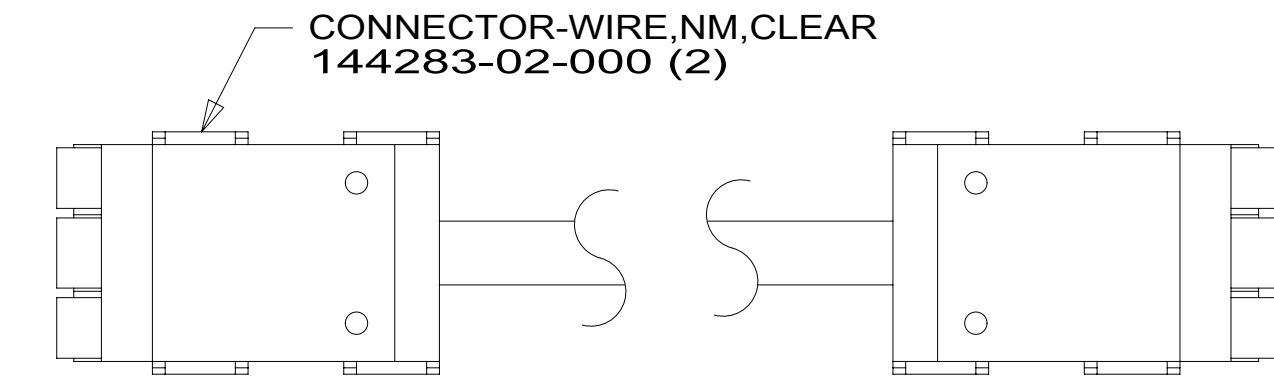
265 CODES/STANDARDS-CSA/CMVSS
1B1 CODES/STANDARDS USA

DESCRIPTION:	
WIRING INSTL-BODY, 110V	
SHEET:	ITEM/PART NO. REV
4 OF 6	000123875 / 32618701000

RED	1B1	136135-07-048	
	265	136136-07-048	
BLK	1B1	136135-06-056	
	265	136136-06-056	
BRN	1B1	136131-03-013	4
	265	136134-03-013	4
BLU	1B1	136131-02-092	
	265	136134-02-092	
MAIN	1B1	136137-01-048	5
	265	136138-01-048	5
GROUND MAIN		136145-06-023	
BLU-2	1B1	136131-24-005	3
	265	136134-24-005	3
BRN-2	1B1	136131-19-088	4
	265	136134-19-088	4
BRN-3	1B1	136131-22-056	
	265	136134-22-056	
THROW IN WIRE #1	1B1	136131-24-035	4
	265	136134-24-035	4
THROW IN WIRE #2	1B1	136131-24-007	4
	265	136134-24-007	4
THROW IN WIRE #3	1B1	136131-02-033	4
	265	136134-02-033	4



DETAIL EA



DETAIL EB

5 WIRE PREP TO INSTALL ON POWER CORD BOX ASM. LOAD CENTER END WILL BE INSTALLED ON LINE.

4 SEE DETAIL EA FOR CONNECTOR INSTALLATION.

3 SEE DETAIL EB FOR CONNECTOR INSTALLATION.

2. SECURE WIRES TO BACKSIDE OF LOAD CENTER WITH WIRE TIE 116673-01-000.

1. ALL GROUND WIRES TO BE COVERED WITH TUBING 8041-02-000.

NOTES:

265 CODES/STANDARDS-CSA/CMVSS

1B1 CODES/STANDARDS USA

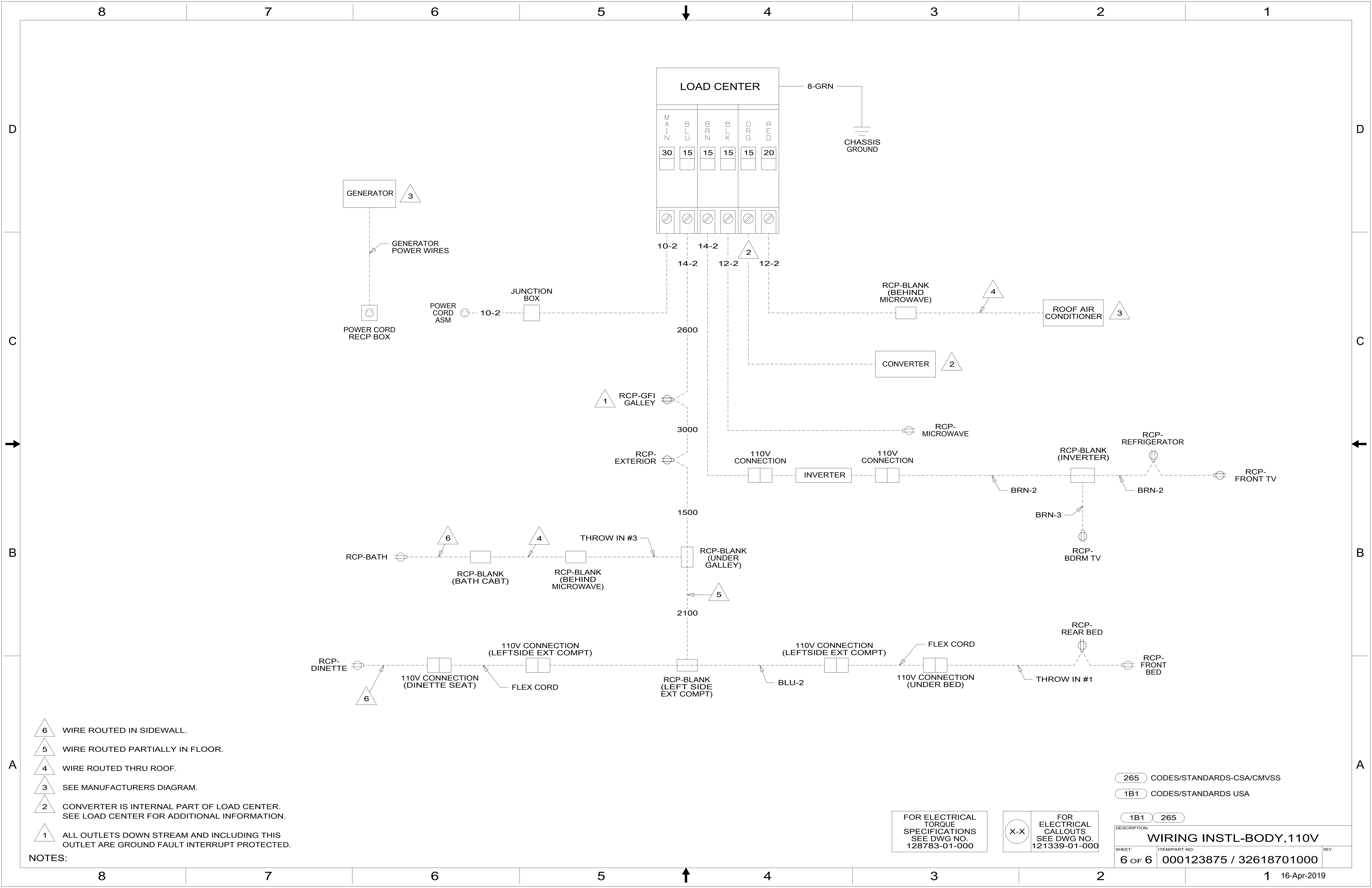
1B1 265

FOR ELECTRICAL TORQUE SPECIFICATIONS SEE DWG NO. 128783-01-000

FOR ELECTRICAL CALLOUTS SEE DWG NO. 121339-01-000

DESCRIPTION: WIRING INSTL-BODY, 110V

SHEET: 5 OF 6 ITEM/PART NO: 000123875 / 32618701000 REV



- NOTES:**
- 6 WIRE ROUTED IN SIDEWALL.
 - 5 WIRE ROUTED PARTIALLY IN FLOOR.
 - 4 WIRE ROUTED THRU ROOF.
 - 3 SEE MANUFACTURERS DIAGRAM.
 - 2 CONVERTER IS INTERNAL PART OF LOAD CENTER. SEE LOAD CENTER FOR ADDITIONAL INFORMATION.
 - 1 ALL OUTLETS DOWN STREAM AND INCLUDING THIS OUTLET ARE GROUND FAULT INTERRUPT PROTECTED.

FOR ELECTRICAL TORQUE SPECIFICATIONS SEE DWG NO. 128783-01-000

FOR ELECTRICAL CALLOUTS SEE DWG NO. 121339-01-000

265 CODES/STANDARDS-CSA/CMVSS
 1B1 CODES/STANDARDS USA

DESCRIPTION:	
WIRING INSTL-BODY, 110V	
SHEET:	ITEM/PART NO.:
6 OF 6	000123875 / 32618701000
REV	