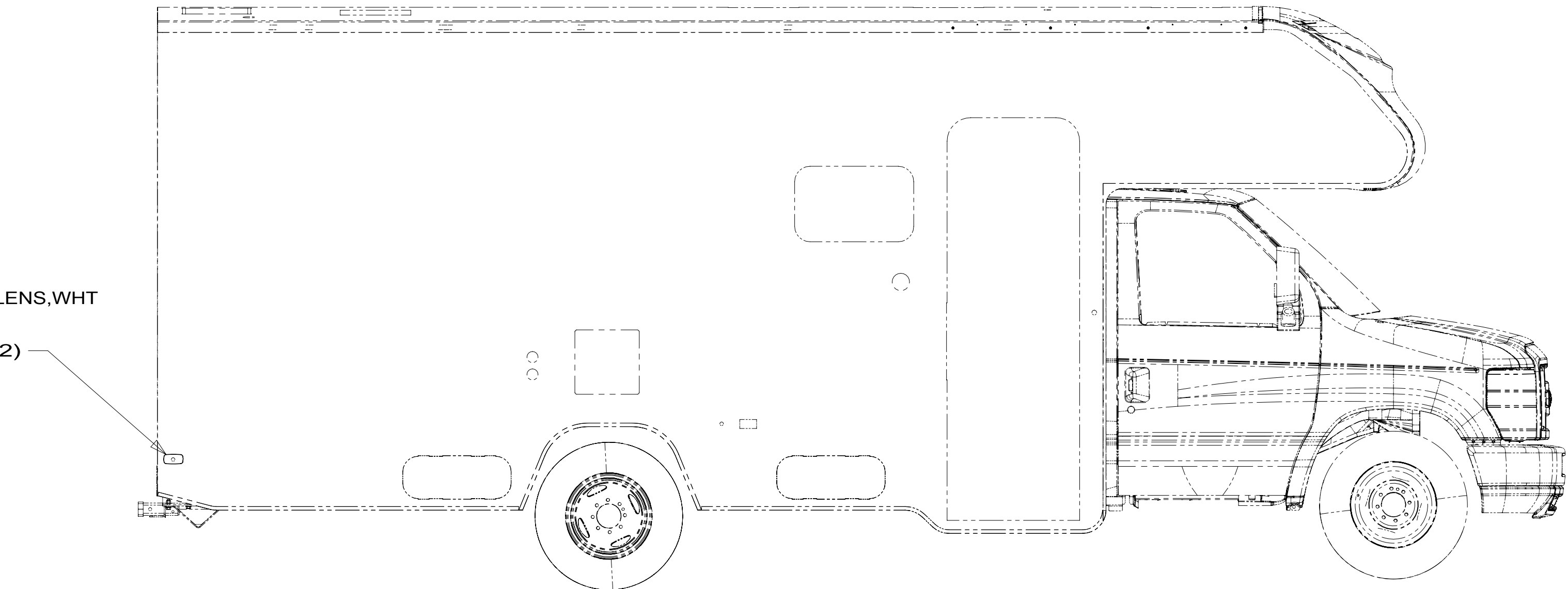


8 7 6 5 4 3 2 1

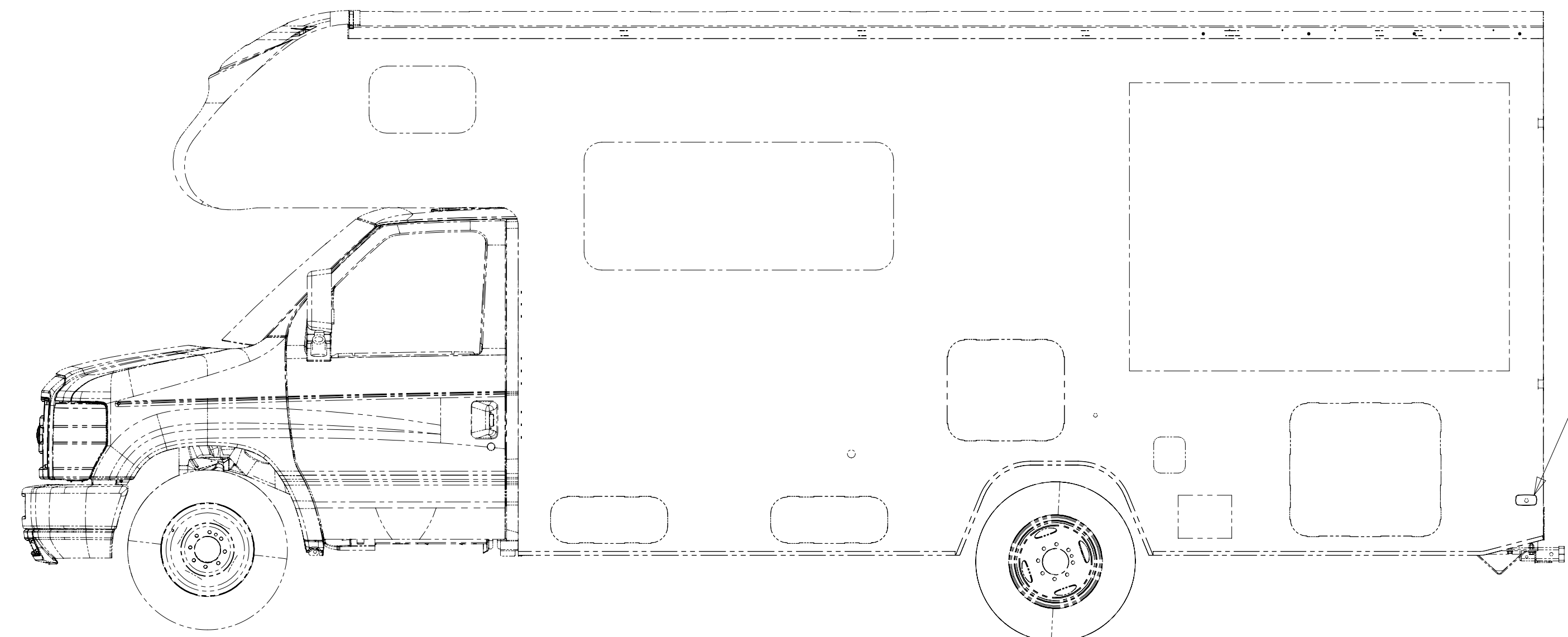
D
C
B
A

D
C
B
A

LAMP-MARKER, W RED LENS, WHT
193802-02-000
SCREW
G11-08-12U (EXT) (2)



LAMP-MARKER, W RED LENS, WHT
193802-02-000
SCREW
G11-08-12U (EXT) (2)



- 265 CODES/STANDARDS-CSA/CMVSS
- 1B1 CODES/STANDARDS USA
- 1B1 265



DSNR:		ALL DIMENSIONS ARE IN MILLIMETERS	
DIFFR:		MATERIAL:	
UNSPECIFIED TOLERANCES:			
WHOLE DIM (X)	: 3		
ONE-PLACE (X.X)	: 1.5		
TWO-PLACE (X.XX)	: 0.50		
ANGLE	: 1°		
REFER TO ES0018 FOR FASTENER TIGHTENING GUIDELINES		WEIGHT: (LBS)	FIRST USED:
			19 900-SER

FOR ELECTRICAL TORQUE SPECIFICATIONS SEE DWG NO. 128783-01-000

FOR ELECTRICAL CALLOUTS SEE DWG NO. 121339-01-000

DESCRIPTION: WIRING INSTL-EXTERIOR LAMPS		
SHEET: 1 OF 2	ITEM/PART NO: 000123872 / 32424101000	REV
REF:		1 29-Aug-2018

8 7 6 5 4 3 2 1

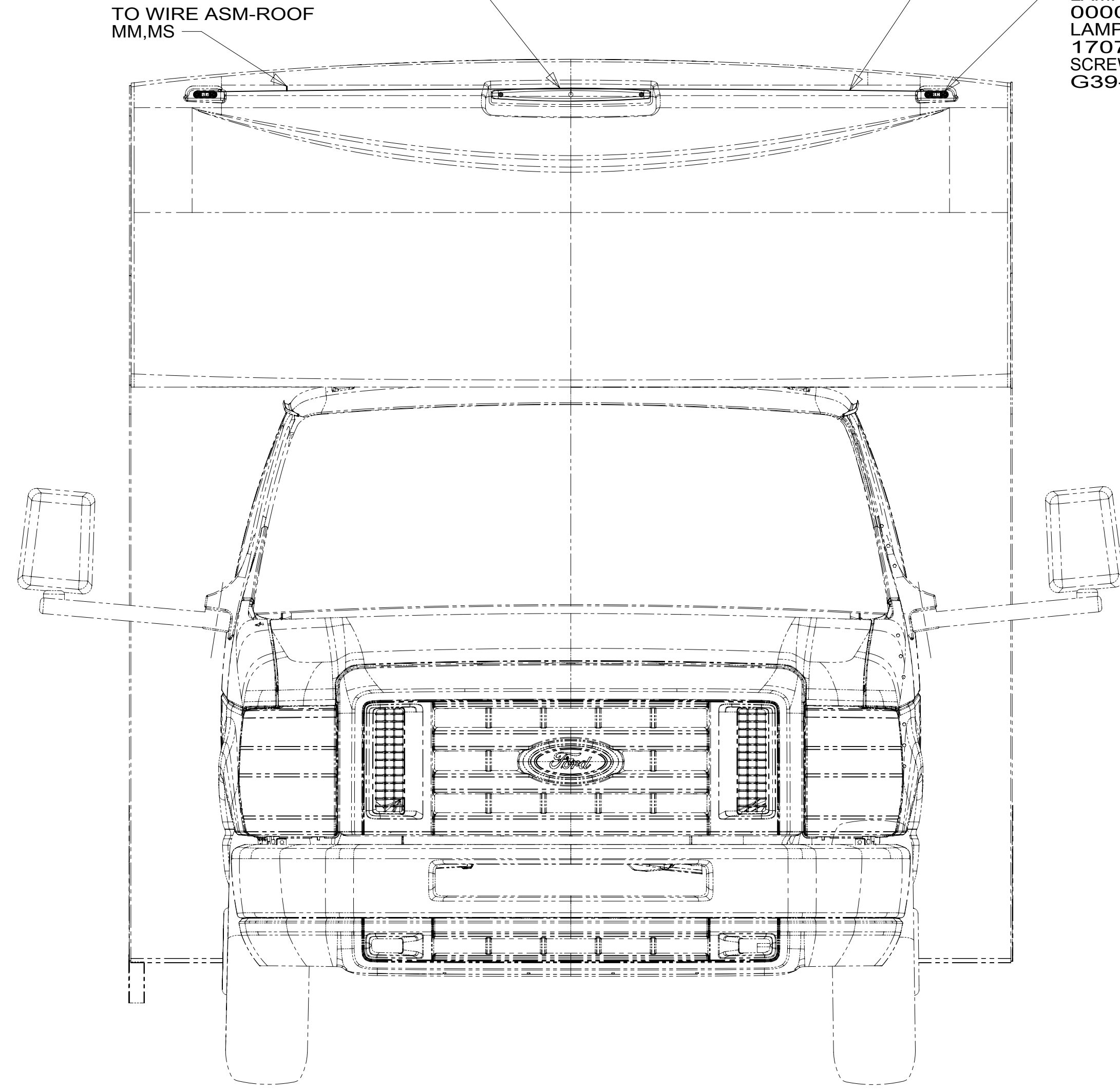
LAMP ASM-IDENTIFICATION,AMBER
000041413 / 319738-01-000
LAMP ASM-IDENTIFICATION,GASKET
000041422 / 319743-01-000
SCREW
G39-08-12U (2)

WIRE ASM-
CLEARANCE LAMPS 1

LAMP ASM-CLEARANCE,AMBER
000041106 / 319636-01-000 (2)
LAMP ASM-CLEARANCE,GASKET
170777-03-000 (2)
SCREW
G39-08-12U (4)

WIRE ASM-
BACKWALL 3

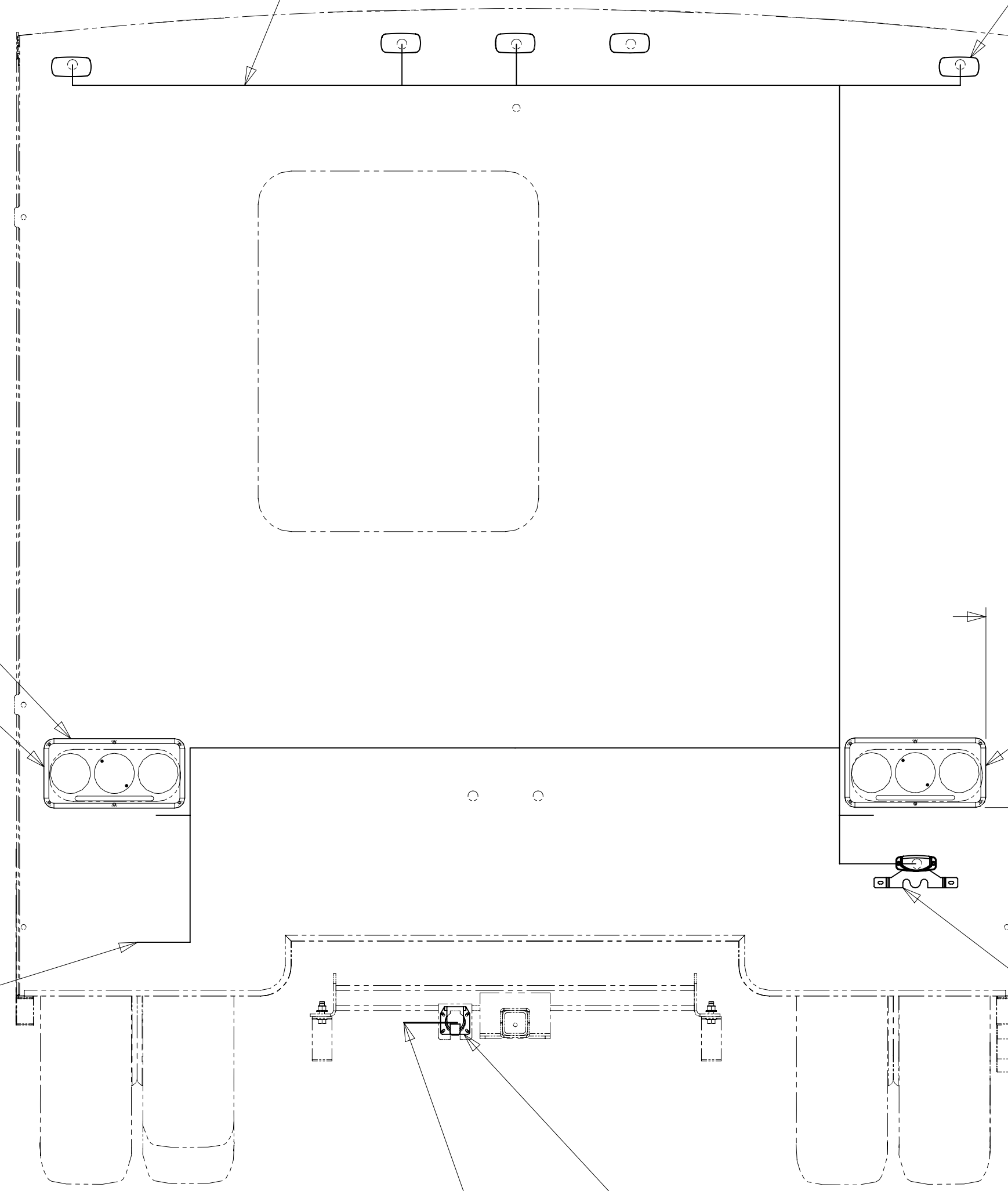
LAMP-MARKER,W RED LENS,WHT
193802-02-000 (5)
SCREW
G11-08-12U (EXT) (10)



4 LAMP ASM-STOP/TURN/
TAIL/BACKUP
183787-01-000 (2)
SCREW
G11-07-12U (12)
CONNECTOR
58028-01-000 (8)

SEE DETAIL BA

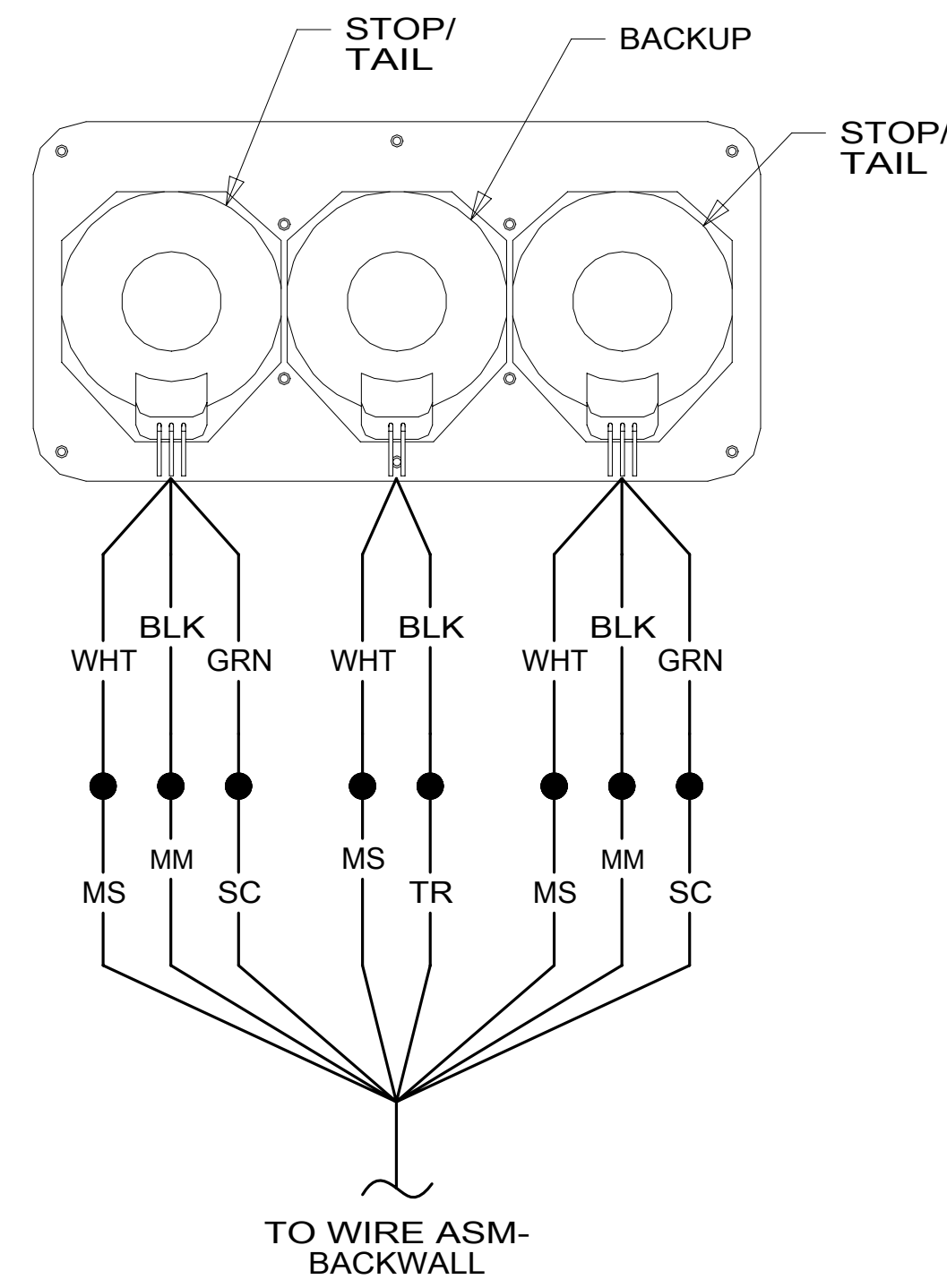
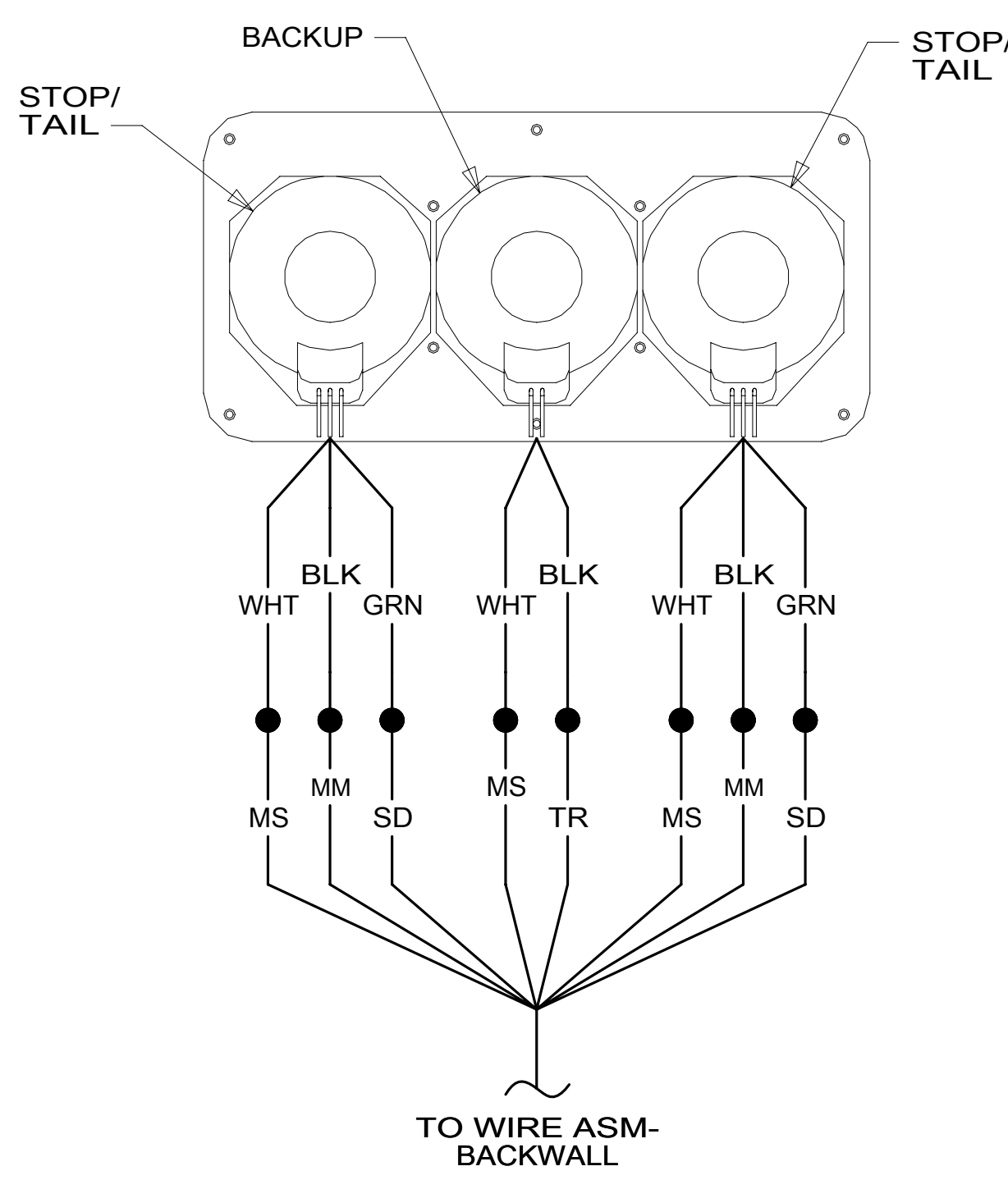
8-PIN HOUSING
TO WIRE ASM-CHASSIS



BRACKET-LICENSE
66432-03-000
SCREW
G67-10-129 (2)
LIGHT-LICENSE
66432-02-000
SCREW
G39-08-12T (EXT) (2)
CONNECTOR
58028-01-000 (2)

CONNECTOR-TRAILER
157593-01-000
SCREW
101618-01-000 (4)

WIRE ASM-CHASSIS 2



- NOTES:
- 4 TAIL LAMP MUST BE INSTALLED WITH WIRES DOWN.
 - 3 LOCATED IN BACKWALL ASSEMBLY.
 - 2 SECURE WIRE BELOW COACH WITH CLAMP 10495-01-000 AND SCREW G67-10-12B.
 - 1 LOCATED IN FRONT CAP ASM.

FOR ELECTRICAL
TORQUE
SPECIFICATIONS
SEE DWG NO.
128783-01-000

FOR
ELECTRICAL
CALLOUTS
SEE DWG NO.
121339-01-000

265 CODES/STANDARDS-CSA/CMVSS

1B1 CODES/STANDARDS USA

1B1 265

DESCRIPTION:
WIRING INSTL-EXTERIOR LAMPS

SHEET: 2 OF 2 ITEM/PART NO: 000123872 / 32424101000 REV