

8 7 6 5 4 3 2 1

D

C

B

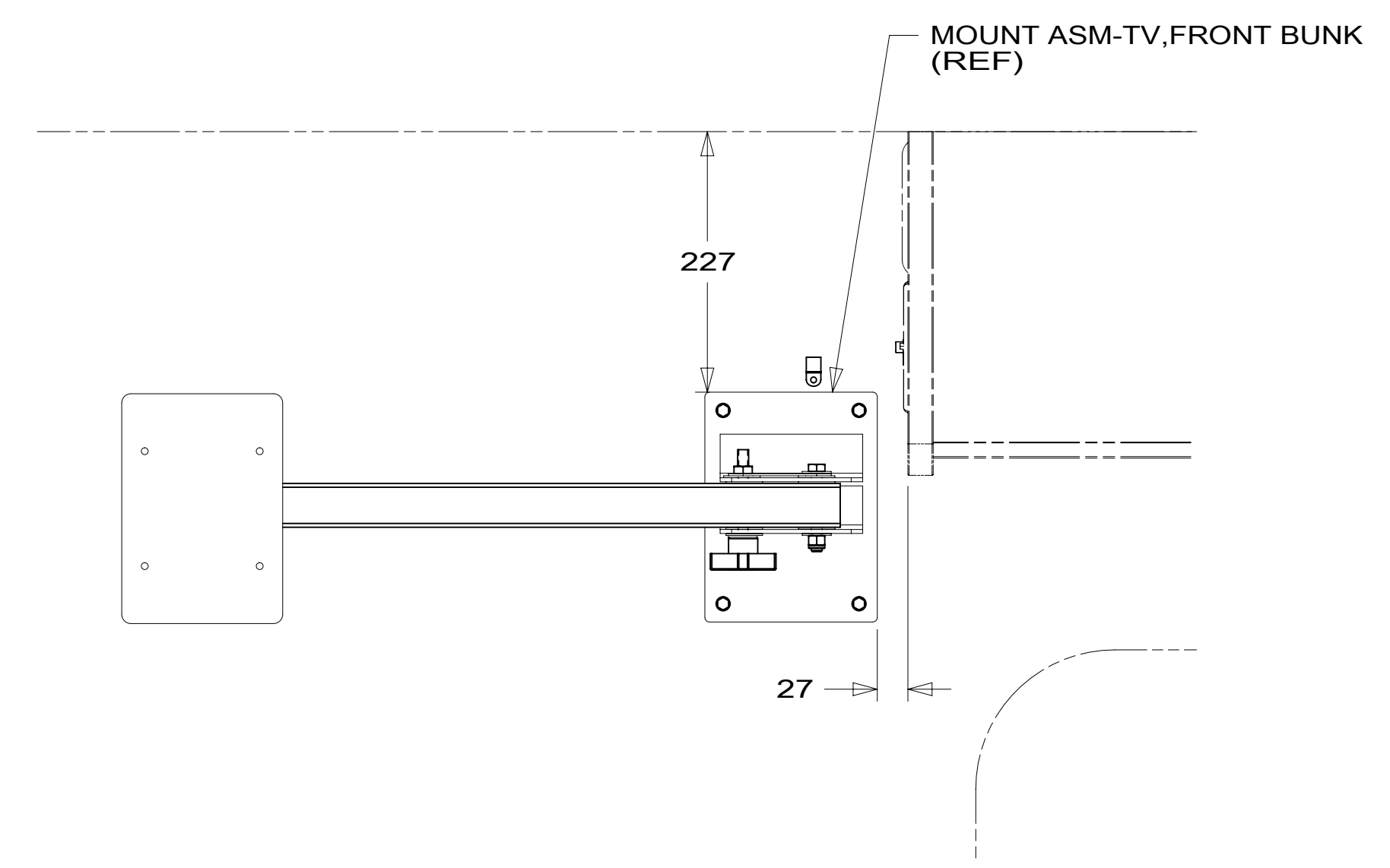
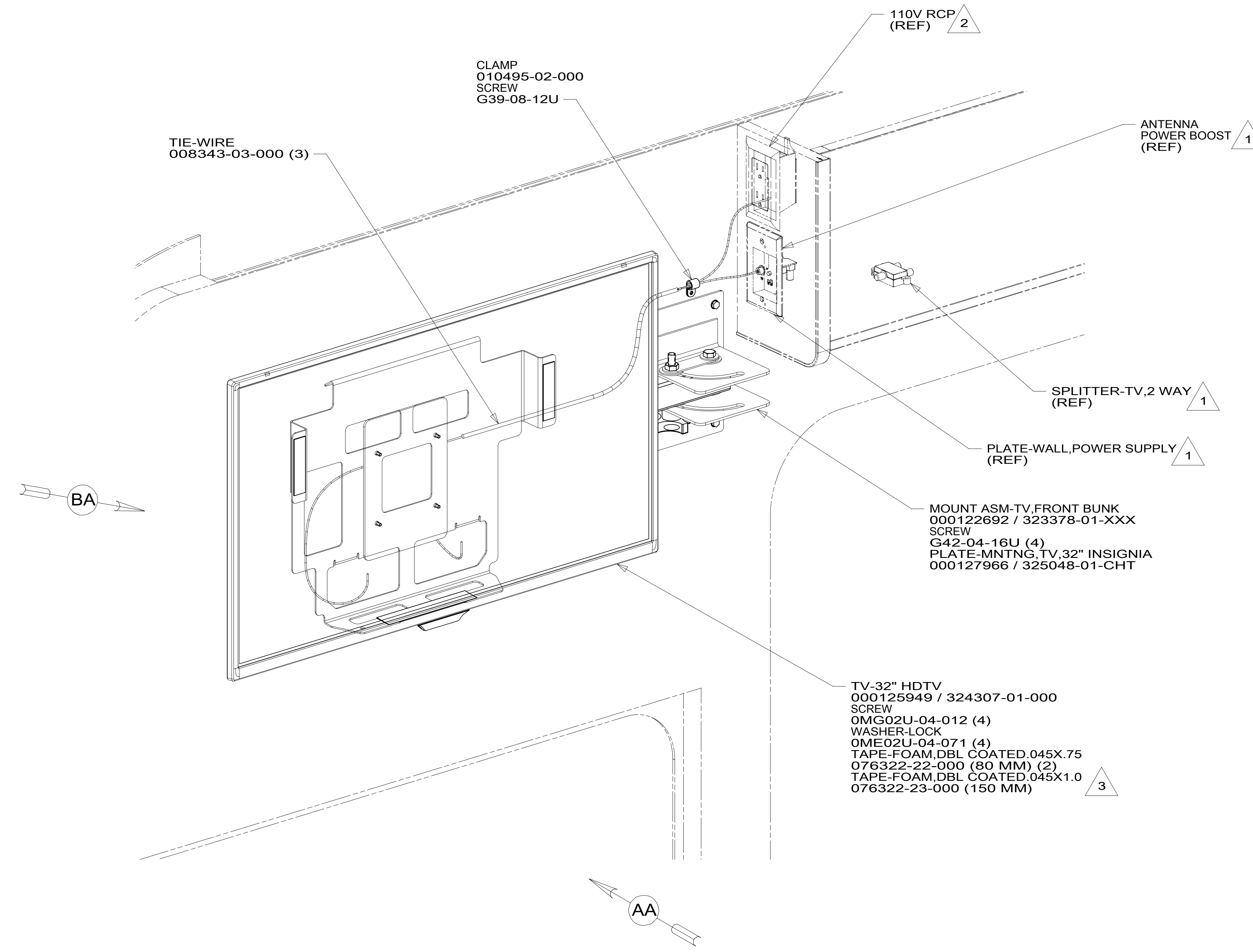
A

D

C

B

A



VIEW AA
(TV NOT SHOWN)

- NOTES:
- 3 PREP BOTH SURFACES WITH ADHESIVE-PROMOTER 087211-01-000.
 - 2 SEE WIRING INSTL-BODY, 110V FOR ADDITIONAL INFORMATION.
 - 1 SEE WIRING INSTL-BODY, 12V FOR ADDITIONAL INFORMATION.

FOR ELECTRICAL TORQUE SPECIFICATIONS SEE DWG NO. 128783-01-000

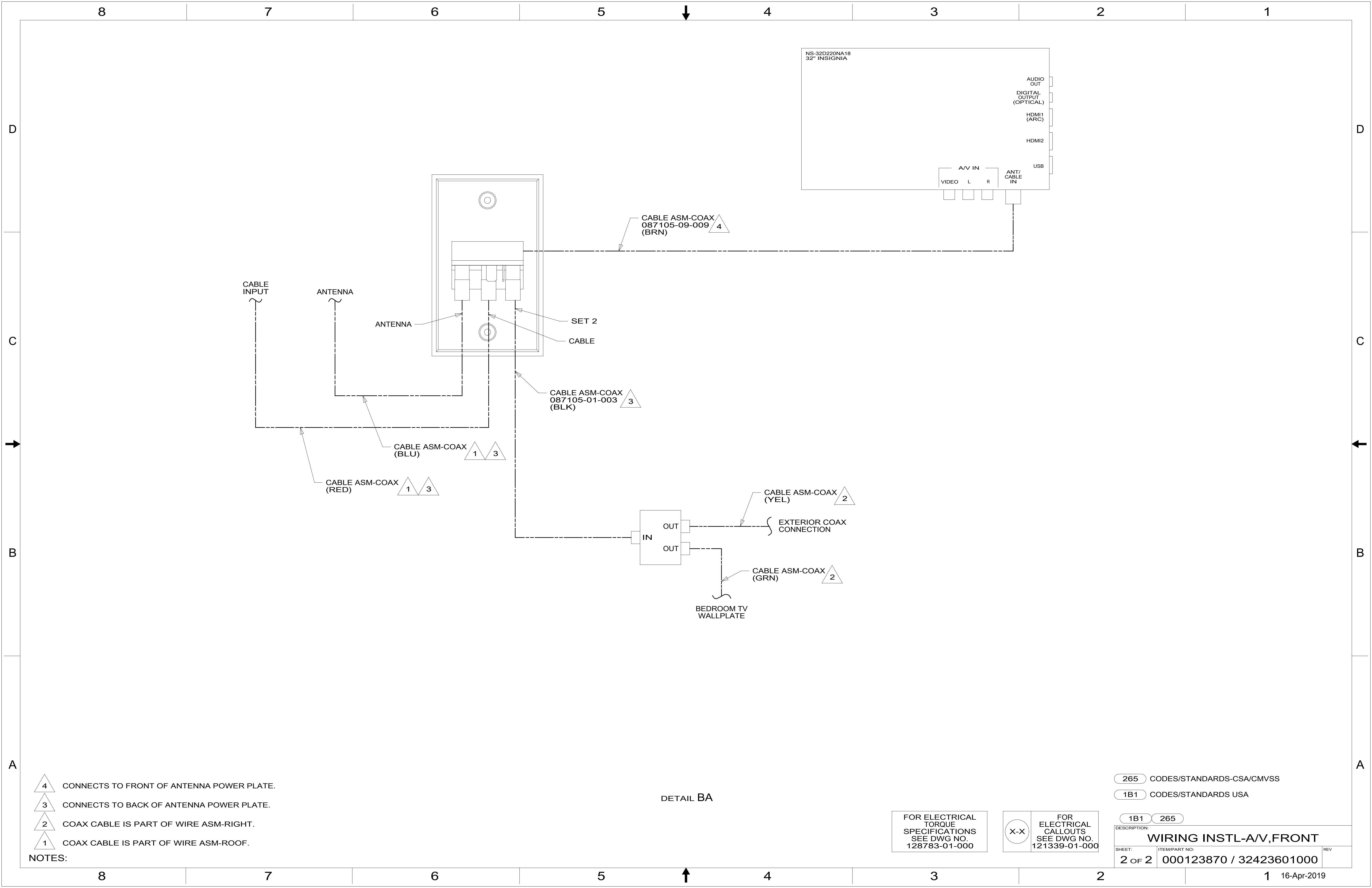
FOR ELECTRICAL CALLOUTS SEE DWG NO. 121339-01-000

- 265 CODES/STANDARDS-CSA/CMVSS
- 1B1 CODES/STANDARDS USA
- 1B1 265



DSNR:		ALL DIMENSIONS ARE IN MILLIMETERS	
DFFR:		MATERIAL:	
UNSPECIFIED TOLERANCES:			
WHOLE DIM (X)	: 3		
ONE-PLACE (X.X)	: 1.5		
TWO-PLACE (X.XX)	: 0.50		
ANGLE	: 1°		
REFER TO ES0018 FOR FASTENER TIGHTENING GUIDELINES		WEIGHT: (LBS)	FIRST USED:
			19 900-SER
DESCRIPTION: WIRING INSTL-AV, FRONT			
SHEET:	ITEM/PART NO.:	REV:	
1 OF 2	000123870 / 32423601000		
REF:		1 16-Apr-2019	

8 7 6 5 4 3 2 1



- NOTES:
- 4 CONNECTS TO FRONT OF ANTENNA POWER PLATE.
 - 3 CONNECTS TO BACK OF ANTENNA POWER PLATE.
 - 2 COAX CABLE IS PART OF WIRE ASM-RIGHT.
 - 1 COAX CABLE IS PART OF WIRE ASM-ROOF.

DETAIL BA

FOR ELECTRICAL TORQUE SPECIFICATIONS SEE DWG NO. 128783-01-000

FOR ELECTRICAL CALLOUTS SEE DWG NO. 121339-01-000

265 CODES/STANDARDS-CSA/CMVSS
 1B1 CODES/STANDARDS USA

DESCRIPTION: WIRING INSTL-AV,FRONT	
SHEET: 2 OF 2	ITEM/PART NO: 000123870 / 32423601000
REV 1 16-Apr-2019	