

- 3 CONNECTS TO WIRE ASM-LEFT UNDER BED.
- 2 SWITCH ON LAMP TO BE ORIENTED TO REAR OF CABINET.

1. AT MINIMUM ALL WIRES TO BE SUPPORTED AND SECURED PER CODE REQUIREMENTS. USE CLAMP 10495 OR 10497 OR WIRE TIE 8343 OR 108046 AND SCREW G67-XX-XXX OR G56-XX-XXX AS APPROPRIATE FOR INSTALLATION.

NOTES:

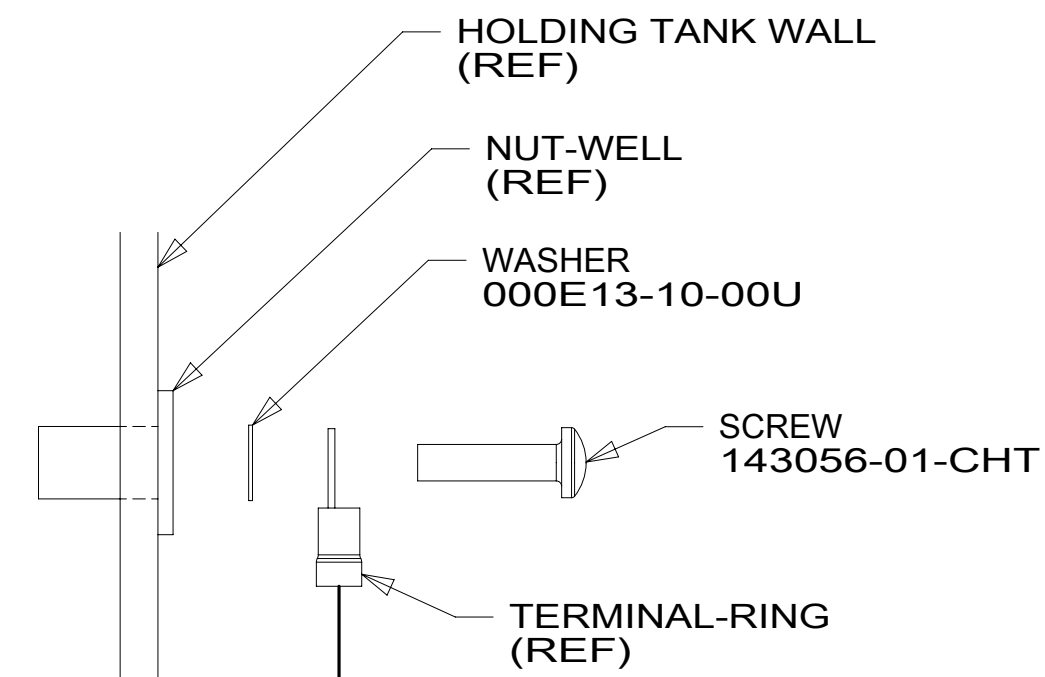
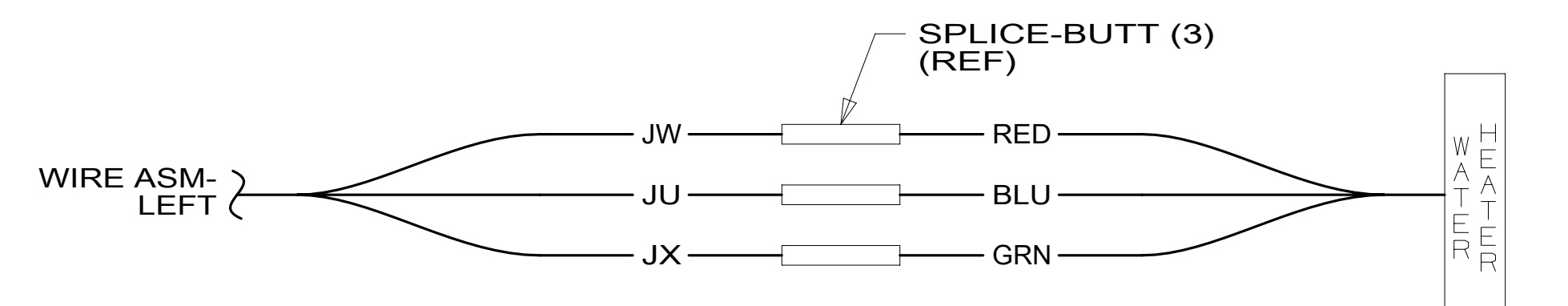
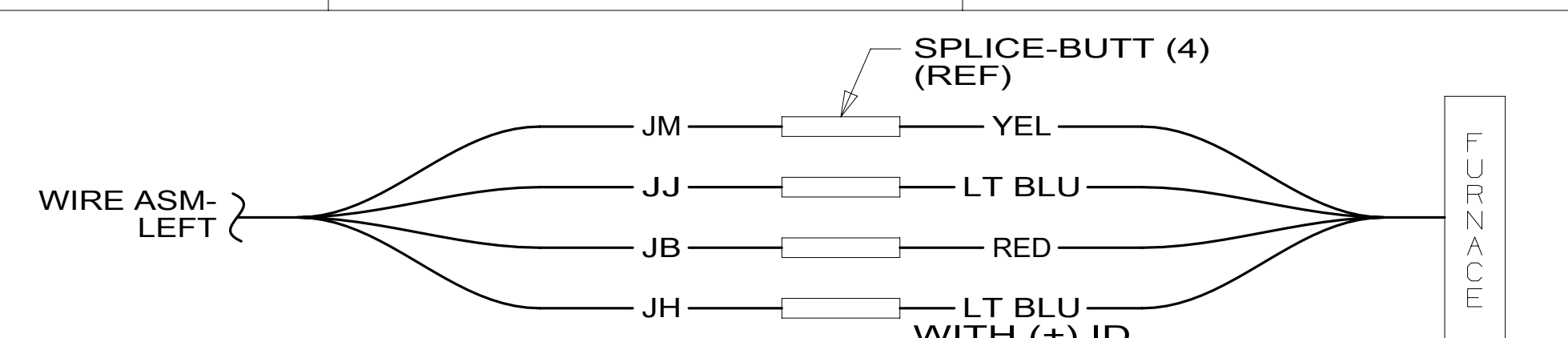
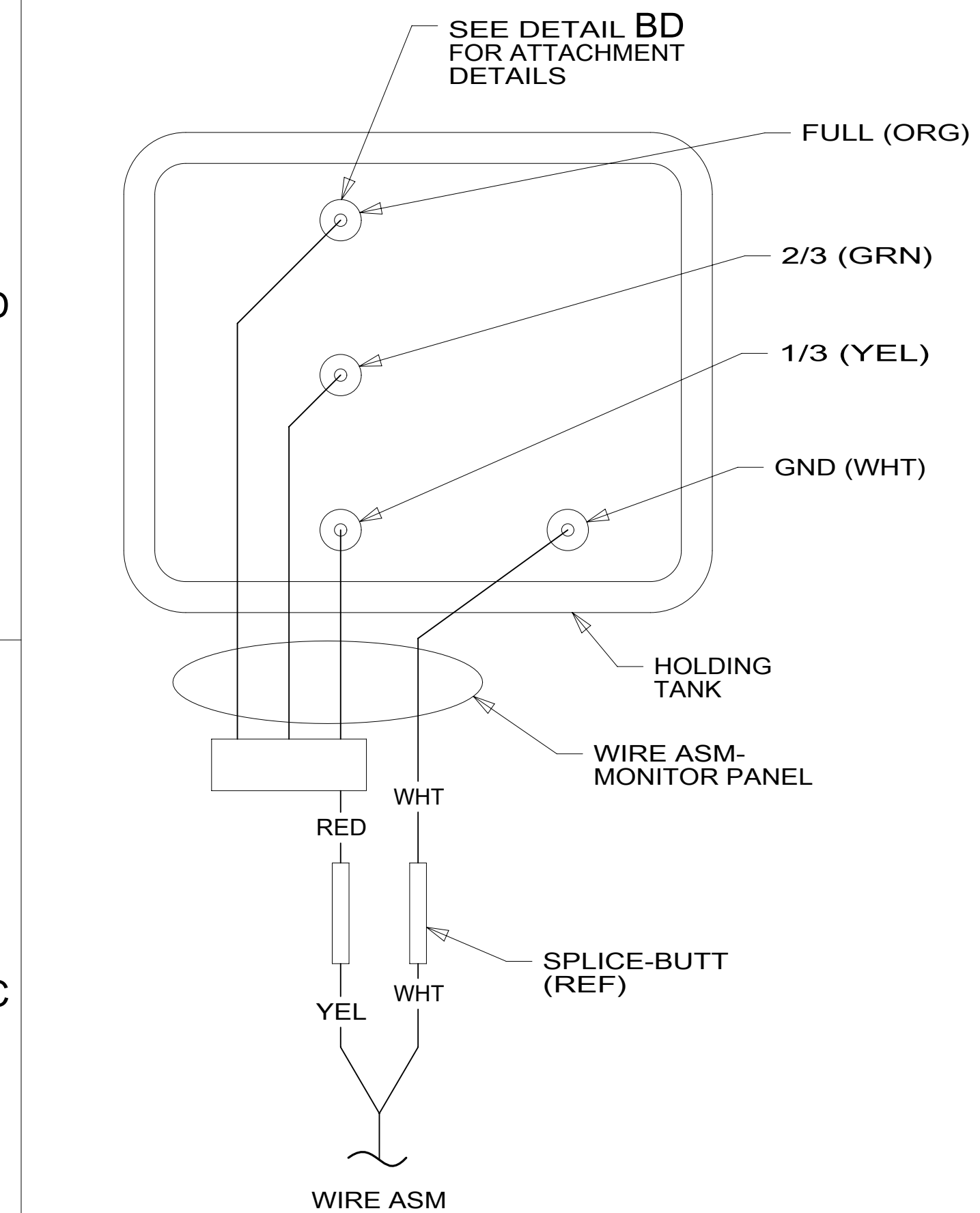
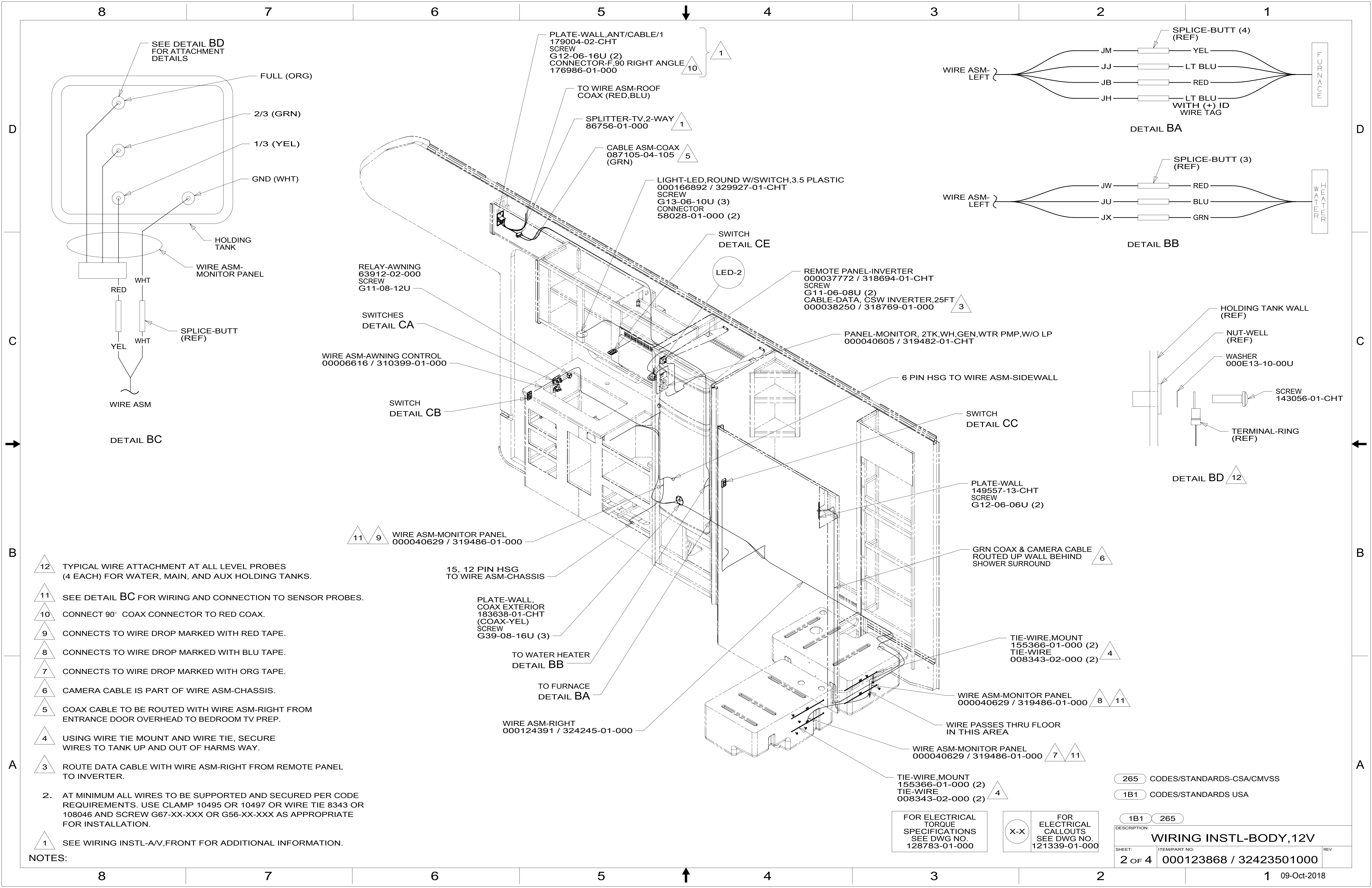
FOR ELECTRICAL TORQUE SPECIFICATIONS SEE DWG NO. 128783-01-000

FOR ELECTRICAL CALLOUTS SEE DWG NO. 121339-01-000

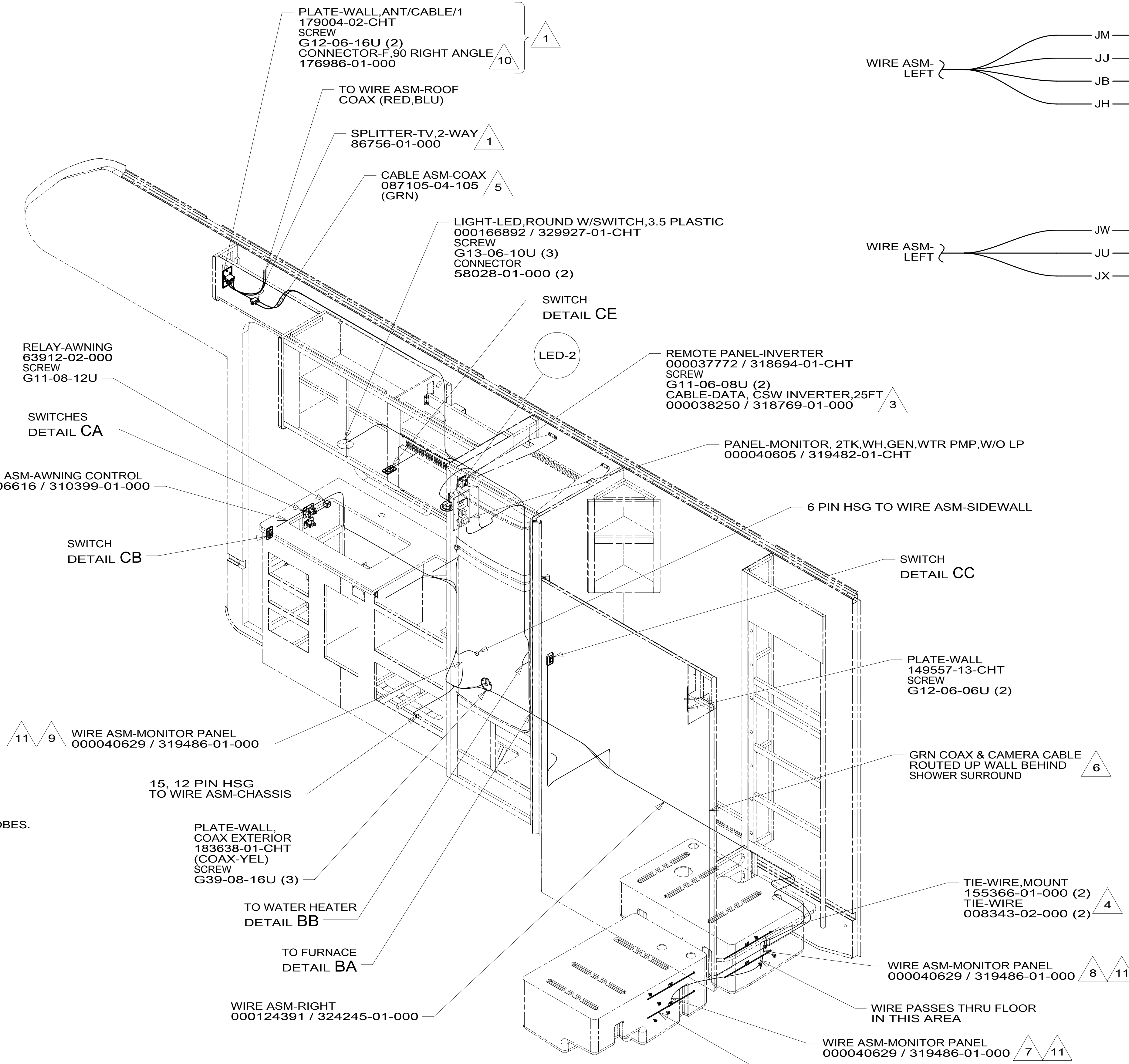
- 265 CODES/STANDARDS-CSA/CMVSS
- 1B1 CODES/STANDARDS USA
- 1B1 265

**WINNEBAGO**  
COPYRIGHT 2016 WINNEBAGO INDUSTRIES, INC.

DSNR:	ALL DIMENSIONS ARE IN MILLIMETERS	
DFFR:	MATERIAL:	
UNSPECIFIED TOLERANCES:	WEIGHT: (LBS)	FIRST USED:
WHOLE DIM (X) : 3		19 922C
ONE-PLACE (X.X) : 1.5		
TWO-PLACE (X.XX) : 0.50		
ANGLE : 1°		
REFER TO ES0018 FOR FASTENER TIGHTENING GUIDELINES		
<b>DESCRIPTION:</b>		
<b>WIRING INSTL-BODY, 12V</b>		
SHEET: 1 OF 4	ITEM/PART NO: 000123868 / 32423501000	REV:



- NOTES:**
- 1 SEE WIRING INSTL-A/V,FRONT FOR ADDITIONAL INFORMATION.
  - 2. AT MINIMUM ALL WIRES TO BE SUPPORTED AND SECURED PER CODE REQUIREMENTS. USE CLAMP 10495 OR 10497 OR WIRE TIE 8343 OR 108046 AND SCREW G67-XX-XXX OR G56-XX-XXX AS APPROPRIATE FOR INSTALLATION.
  - 3 ROUTE DATA CABLE WITH WIRE ASM-RIGHT FROM REMOTE PANEL TO INVERTER.
  - 4 USING WIRE TIE MOUNT AND WIRE TIE, SECURE WIRES TO TANK UP AND OUT OF HARMS WAY.
  - 5 COAX CABLE TO BE ROUTED WITH WIRE ASM-RIGHT FROM ENTRANCE DOOR OVERHEAD TO BEDROOM TV PREP.
  - 6 CAMERA CABLE IS PART OF WIRE ASM-CHASSIS.
  - 7 CONNECTS TO WIRE DROP MARKED WITH ORG TAPE.
  - 8 CONNECTS TO WIRE DROP MARKED WITH BLU TAPE.
  - 9 CONNECTS TO WIRE DROP MARKED WITH RED TAPE.
  - 10 CONNECT 90° COAX CONNECTOR TO RED COAX.
  - 11 SEE DETAIL BC FOR WIRING AND CONNECTION TO SENSOR PROBES.
  - 12 TYPICAL WIRE ATTACHMENT AT ALL LEVEL PROBES (4 EACH) FOR WATER, MAIN, AND AUX HOLDING TANKS.

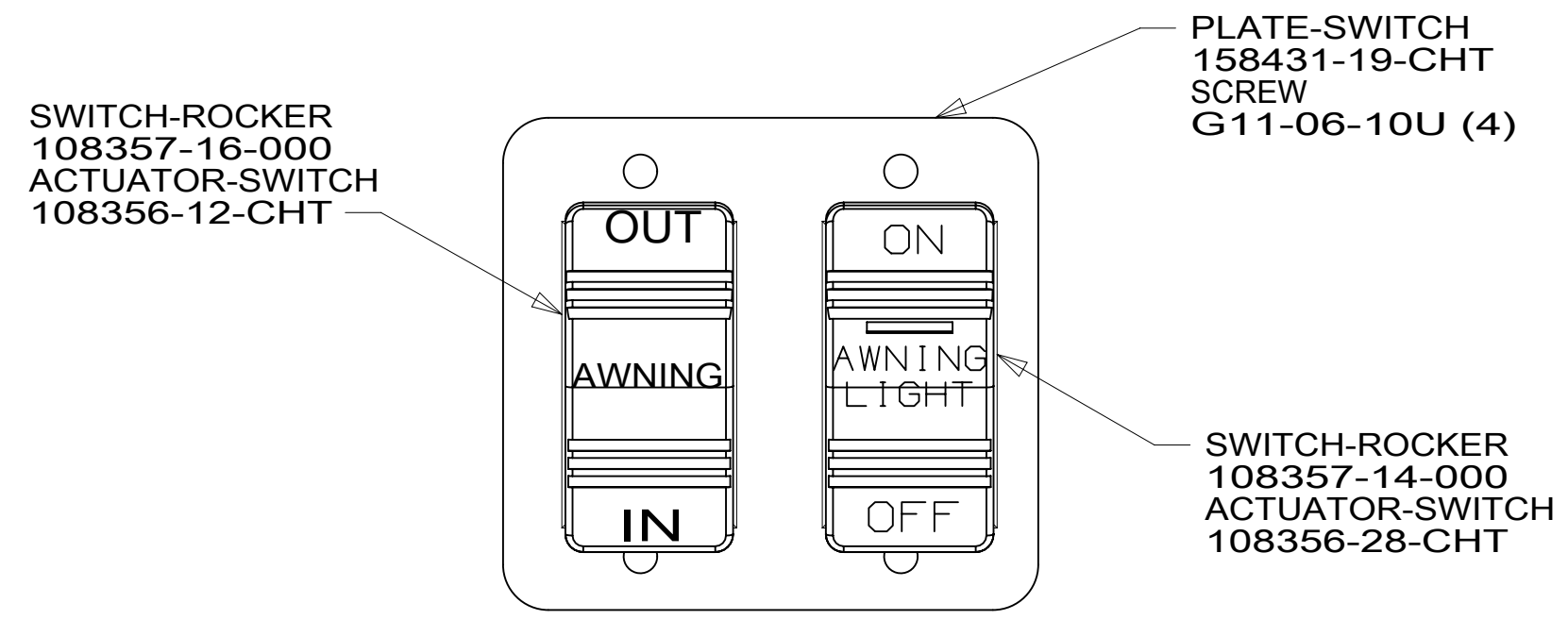


265	CODES/STANDARDS-CSA/CMVSS
1B1	CODES/STANDARDS USA
1B1	265
DESCRIPTION: <b>WIRING INSTL-BODY, 12V</b>	
SHEET: 2 OF 4	ITEM/PART NO: 000123868 / 32423501000
REV 09-Oct-2018	

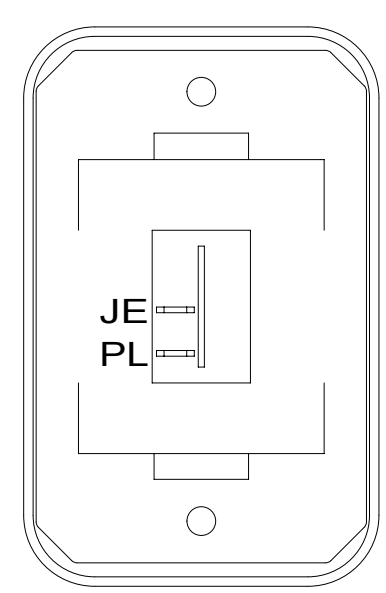
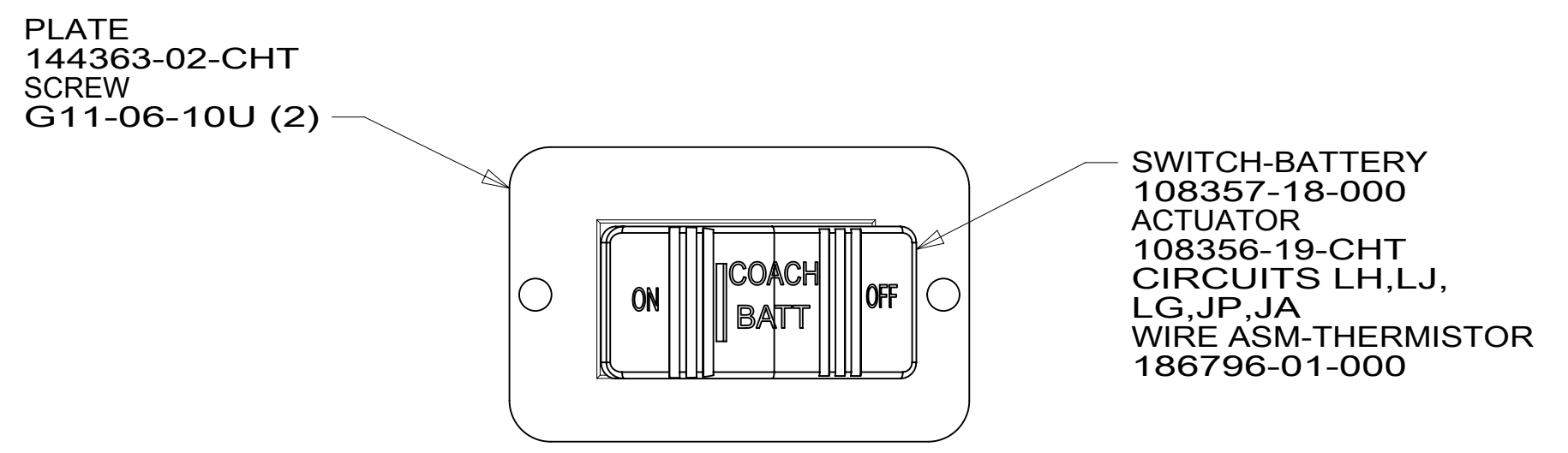
FOR ELECTRICAL  
TORQUE  
SPECIFICATIONS  
SEE DWG NO.  
128783-01-000

FOR  
ELECTRICAL  
CALLOUTS  
SEE DWG NO.  
121339-01-000

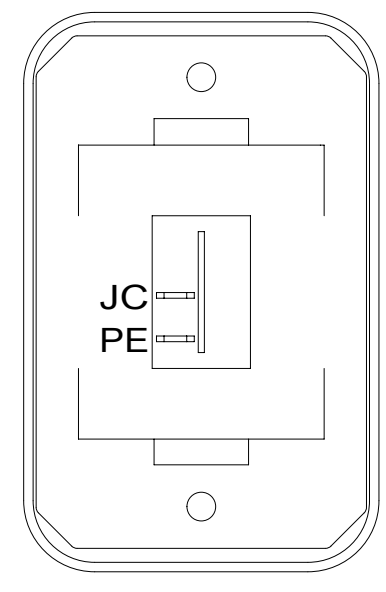
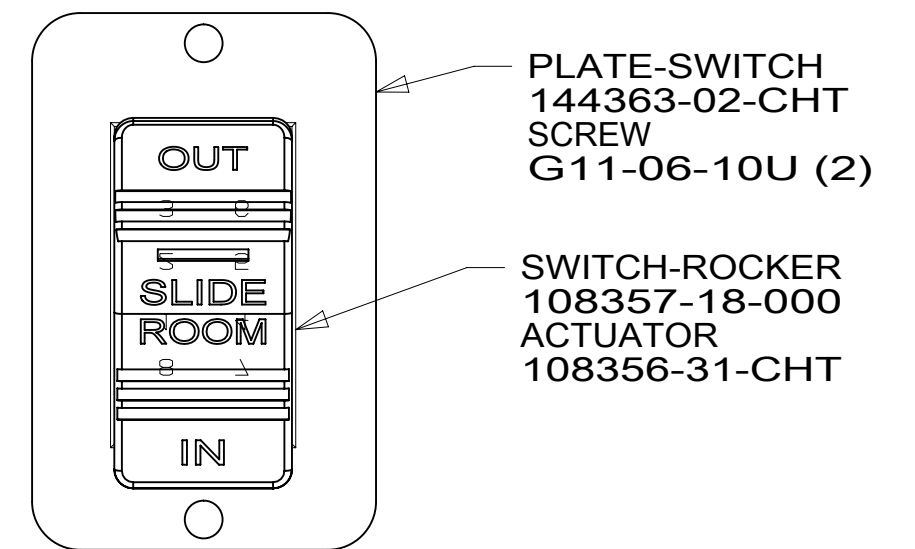
8 7 6 5 4 3 2 1



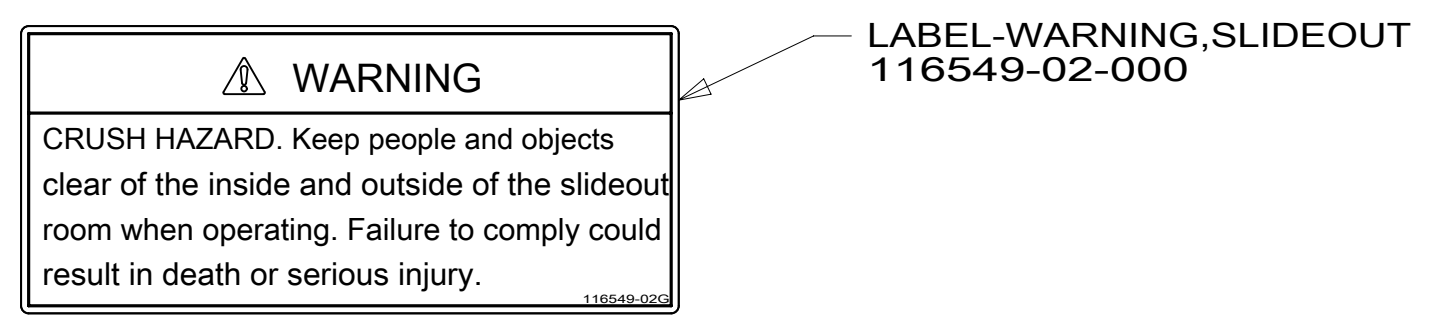
DETAIL CA



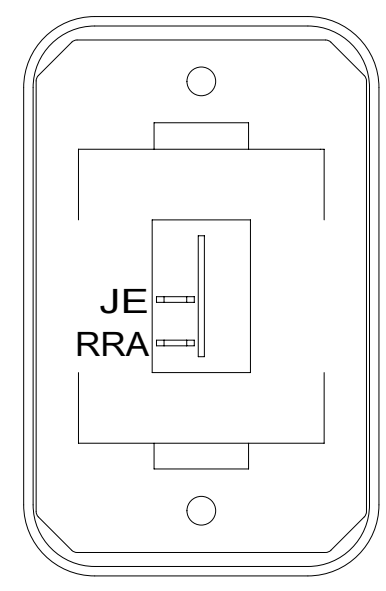
DETAIL CB



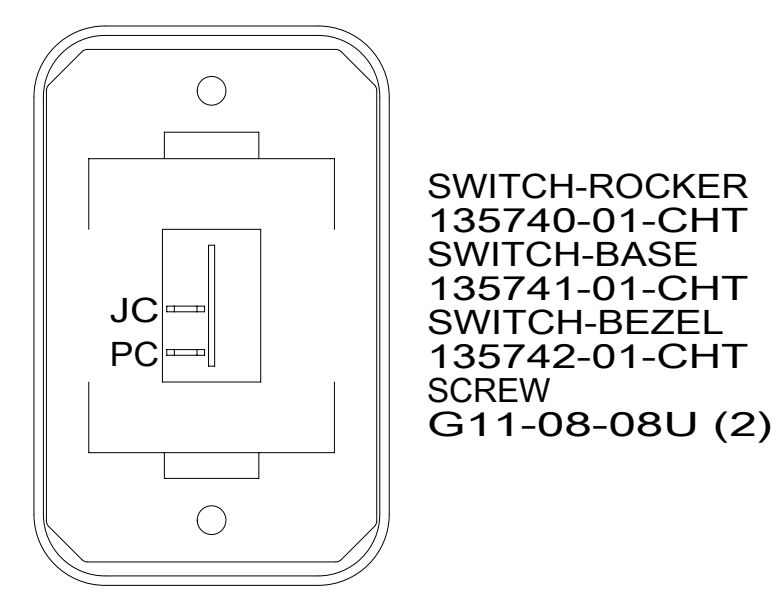
DETAIL CC



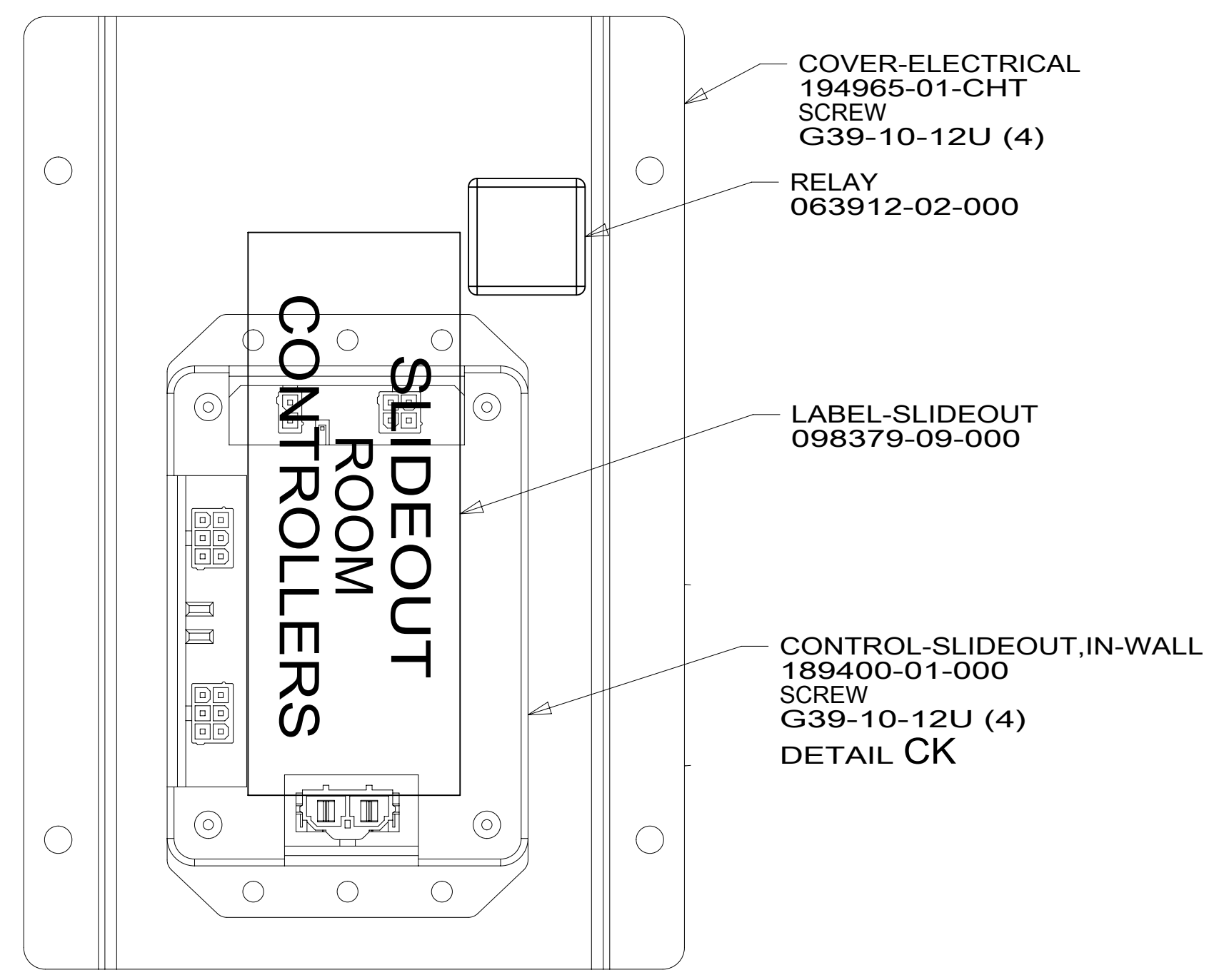
DETAIL CF



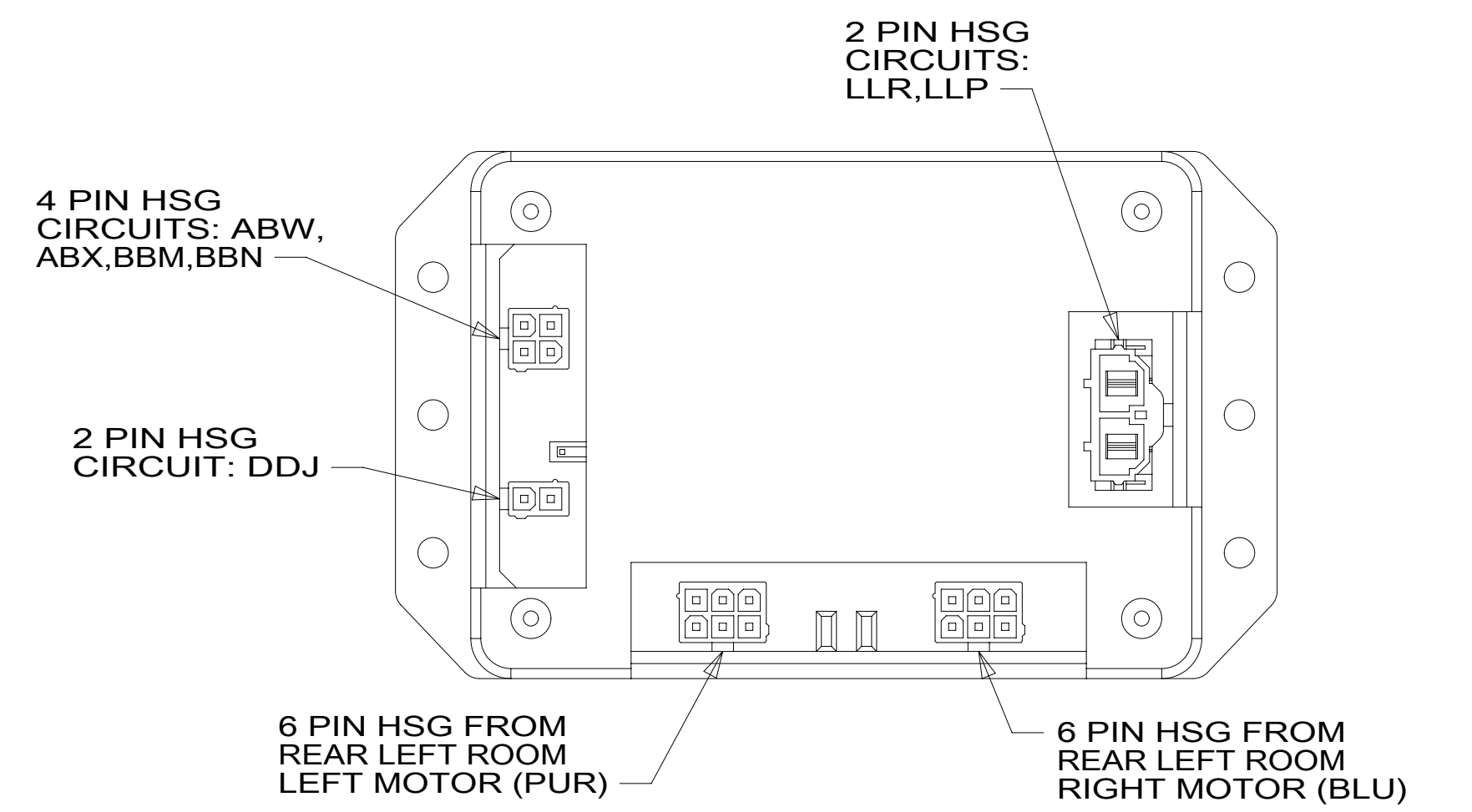
DETAIL CE



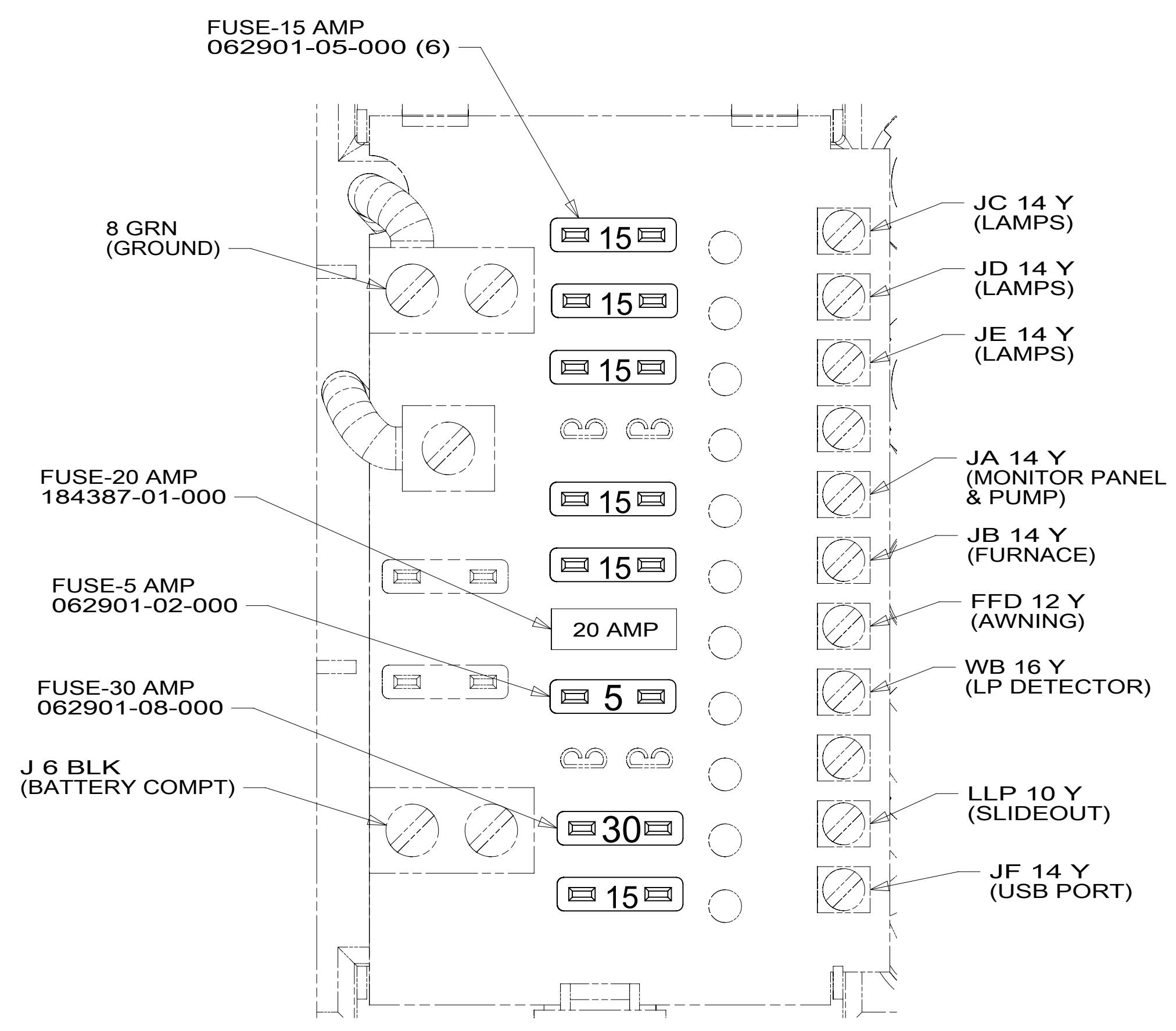
DETAIL CH



DETAIL CJ



DETAIL CK



DETAIL CL

FOR ELECTRICAL  
TORQUE  
SPECIFICATIONS  
SEE DWG NO.  
128783-01-000

FOR  
ELECTRICAL  
CALLOUTS  
SEE DWG NO.  
121339-01-000

- 265 CODES/STANDARDS-CSA/CMVSS
- 1B1 CODES/STANDARDS USA

DESCRIPTION: <b>WIRING INSTL-BODY, 12V</b>	
SHEET: 3 OF 4	ITEM/PART NO: 000123868 / 32423501000
REV 09-Oct-2018	

8 7 6 5 4 3 2 1

8

7

6

5

4

3

2

1

1

LIGHT-LED,ROUND 4.5 PLASTIC  
 000166889 / 329926-01-CHT (9)  
 SCREW  
 G13-06-16U (27)  
 CONNECTOR  
 58028-01-000 (18)

LIGHT-LED,ROUND W/SWITCH,3.5 PLASTIC  
 000166892 / 329927-01-CHT  
 SCREW  
 G13-06-16U (3)  
 CONNECTOR  
 58028-01-000 (2)

ANTENNA-TV, OMNIDIRECTIONAL  
 000171487 / 331386-01-CHT  
 SCREW  
 G67-10-16U (4)

1J8 1

1J8 TV ANTENNA-OMNI DIRECTIONAL,PORTABLE

265 CODES/STANDARDS-CSA/CMVSS

1B1 CODES/STANDARDS USA

1B1 265

FOR ELECTRICAL  
 TORQUE  
 SPECIFICATIONS  
 SEE DWG NO.  
 128783-01-000

FOR ELECTRICAL  
 CALLOUTS  
 SEE DWG NO.  
 121339-01-000

DESCRIPTION:  
**WIRING INSTL-BODY, 12V**

SHEET: 4 OF 4 ITEM/PART NO: 000123868 / 32423501000 REV

1 SEE ANTENNA INSTALLATION MANUAL FOR  
 CORRECT INSTALLATION PROCEDURE.

NOTES:

8

7

6

5

4

3

2

1

1 09-Oct-2018