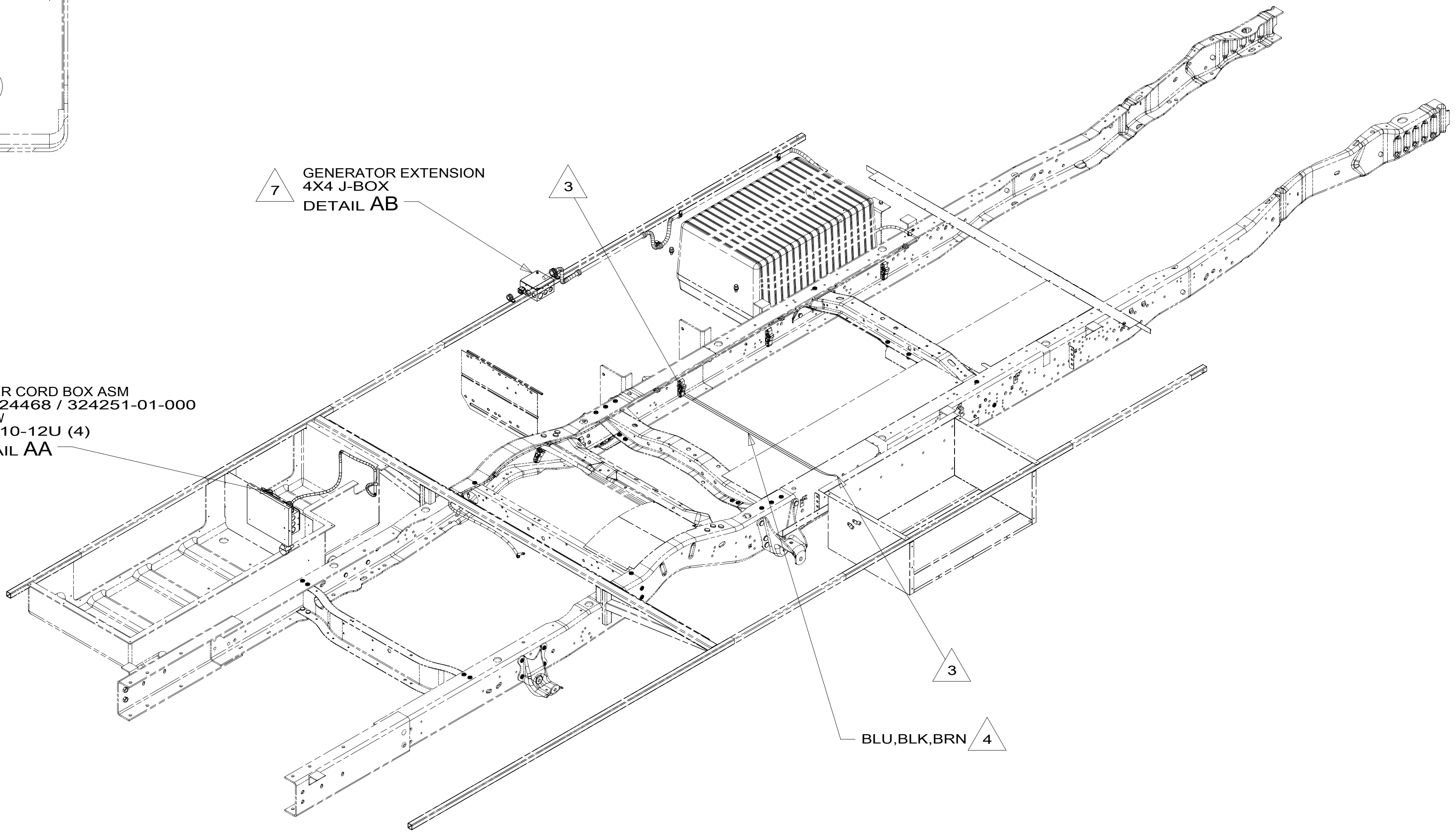


DETAIL AA

POWER CORD BOX ASM  
000124468 / 324251-01-000  
SCREW  
G67-10-12U (4)  
DETAIL AA

7 GENERATOR EXTENSION  
4X4 J-BOX  
DETAIL AB



BLU,BLK,BRN 4

BOX-ELEC-STL 4X4 UL/CSA  
008289-01-000  
COVER-PLT-BLN STL 4X4 UL/CSA  
008294-01-000  
SCREW  
G67-10-10U (2)  
WIRE ASM-GROUND  
133678-02-000  
WIRE NUT-GREY  
8314-01-000 (3)  
TUBING-VINYL  
008041-02-000 (150 MM) 5

CONNECTOR-1/2 CONDUIT  
093256-01-000

CONNECTOR-PLAS-21/32  
008356-02-000

6 GENERATOR POWER LEADS  
FROM GENERATOR

GENERATOR CABLE ASM  
TO LOAD CENTER

CLAMP  
10497-03-000  
SCREW  
G67-10-10U

CLAMP  
10497-01-000  
SCREW  
G67-10-10U

DETAIL AB

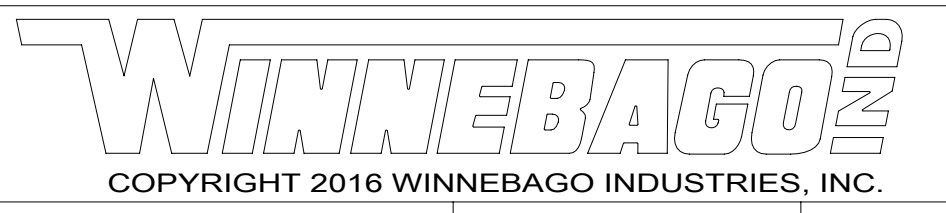
- 7 LOCATED ABOVE FLOOR UNDER DINETTE SEAT.
- 6 SEE GENERATOR INSTL FOR ADDITIONAL INFORMATION.
- 5 APPLY TUBING TO BARE GROUND WIRE.
- 4 WIRE ROUTED IN FLOOR.
- 3 ROUTE WIRE THRU FLOOR.

- 2. ALL 110V WIRE TO BE CLAMPED WITH CLAMP 10497-05-000 WITHIN 200MM OF OUTLET BOXES, USE SCREW G67-10-12U.
- 1. AT MINIMUM ALL WIRES TO BE SUPPORTED AND SECURED PER CODE REQUIREMENTS. USE CLAMP 10495 OR 10497 OR WIRE TIE 8343 OR 108046 AND SCREW G67-XX-XXX OR G56-XX-XXX AS APPROPRIATE FOR INSTALLATION.

NOTES:

265 CODES/STANDARDS-CSA/CMVSS  
1B1 CODES/STANDARDS USA

1B1 265



DSNR:		ALL DIMENSIONS ARE IN MILLIMETERS	
DFFR:		MATERIAL:	
UNSPECIFIED TOLERANCES:		WEIGHT: (LBS)	FIRST USED:
WHOLE DIM (X)	: 3		19 922C
ONE-PLACE (X.X)	: 1.5		
TWO-PLACE (X.XX)	: 0.50		
ANGLE	: 1°		

REFER TO ES0018 FOR FASTENER TIGHTENING GUIDELINES

WIRING INSTL-BODY, 110V

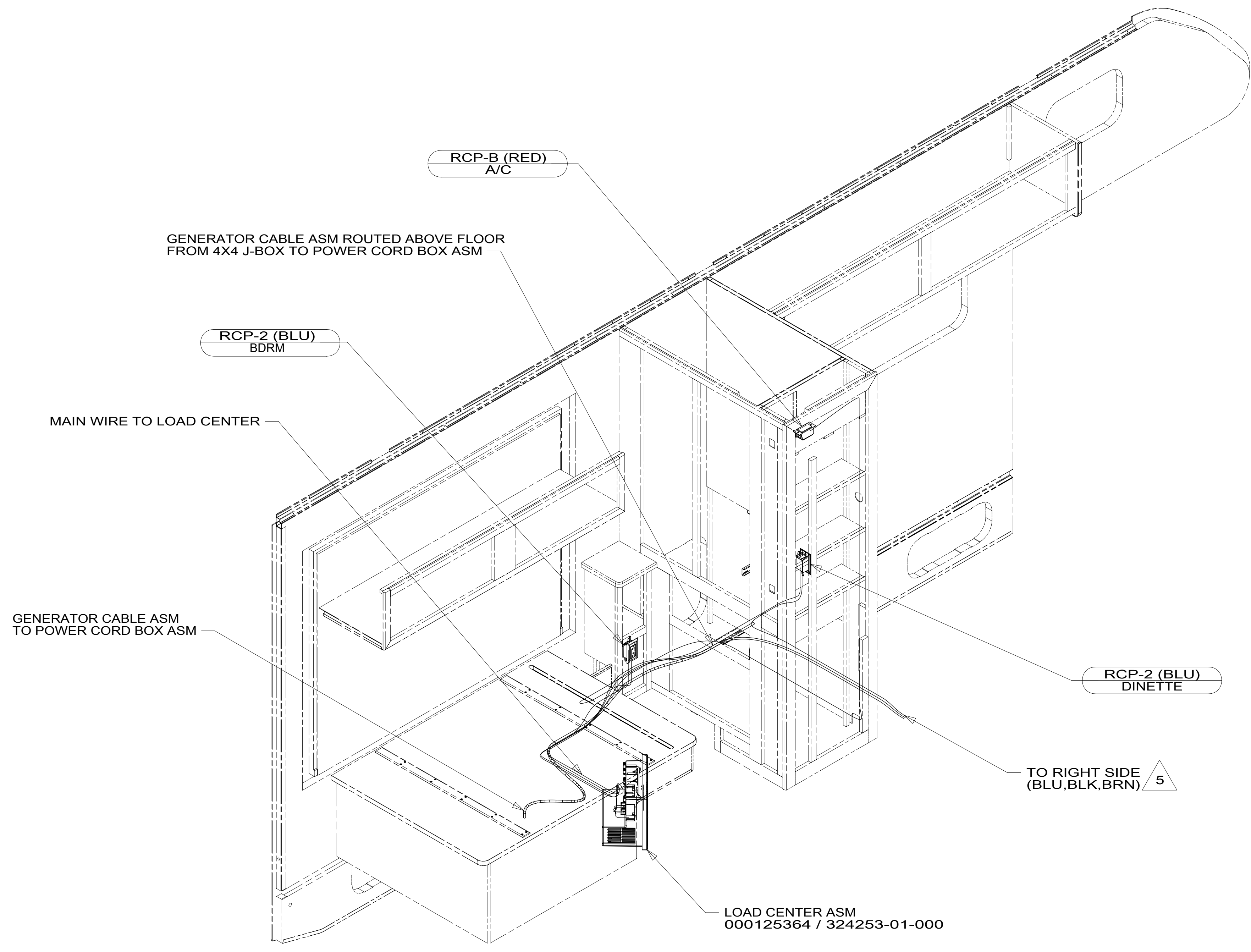
SHEET:	ITEM/PART NO.:	REV:
1 OF 6	000123867 / 32423401000	

FOR ELECTRICAL TORQUE SPECIFICATIONS SEE DWG NO. 128783-01-000

FOR ELECTRICAL CALLOUTS SEE DWG NO. 121339-01-000

8 7 6 5 4 3 2 1

D  
C  
B  
A



- 5 ROUTE WIRE THRU FLOOR TO GALLEY.
4. FOR MORE INFORMATION SEE WIRING DIAGRAM-BODY, 110V.
3. ALL GROUND WIRE TO BE COVERED WITH TUBING 8041-02-000.
2. ALL 110V WIRE TO BE CLAMPED WITH CLAMP 10497-05-000 WITHIN 200MM OF OUTLET BOXES, USE SCREW G67-10-12B.
1. AT MINIMUM ALL WIRES TO BE SUPPORTED AND SECURED PER CODE REQUIREMENTS. USE CLAMP 10495 OR 10497 OR WIRE TIE 8343 OR 108046 AND SCREW G67-XX-XXX OR G56-XX-XXX AS APPROPRIATE FOR INSTALLATION.

NOTES:

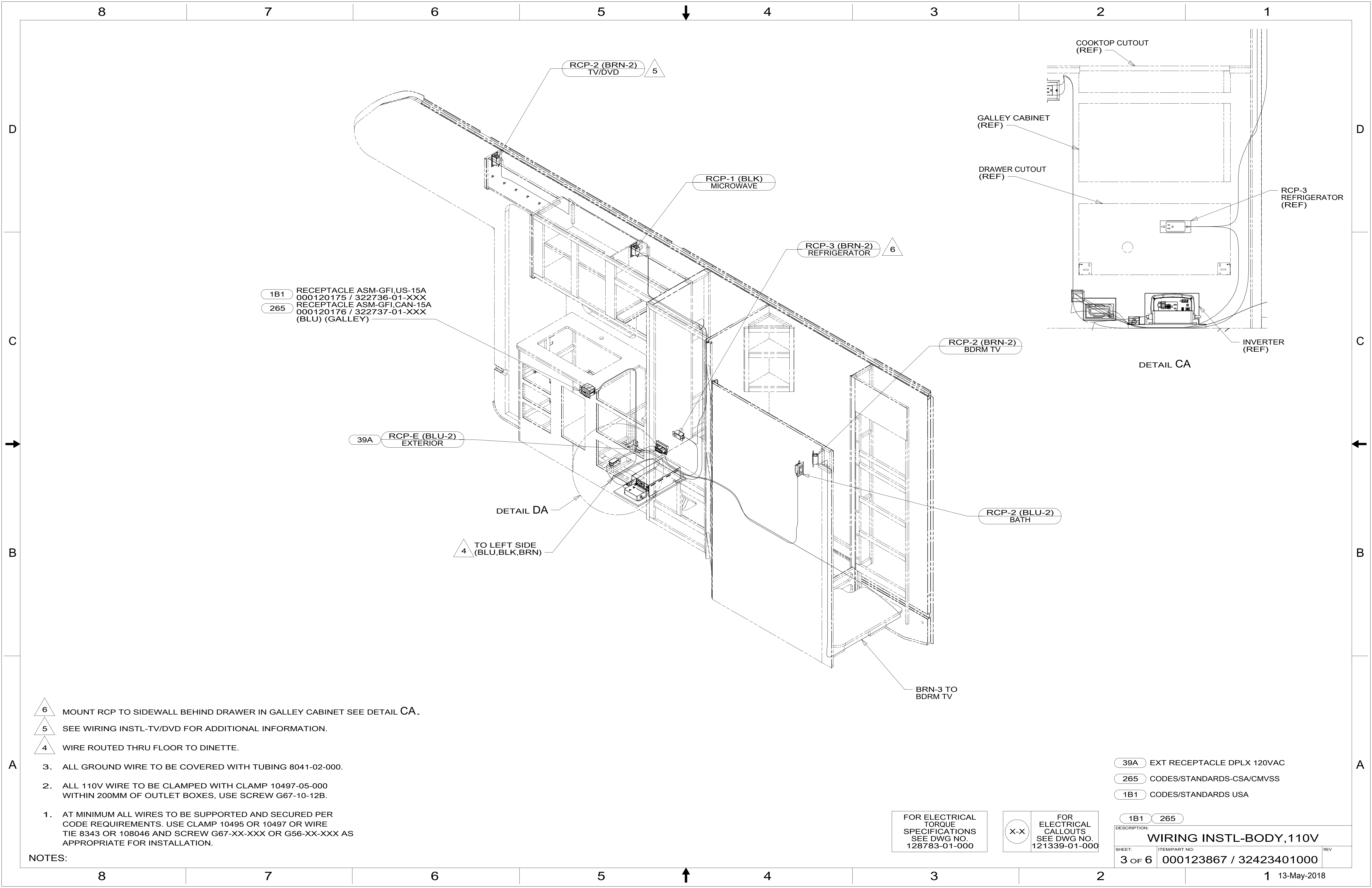
FOR ELECTRICAL TORQUE SPECIFICATIONS SEE DWG NO. 128783-01-000

FOR ELECTRICAL CALLOUTS SEE DWG NO. 121339-01-000

265 CODES/STANDARDS-CSA/CMVSS  
1B1 CODES/STANDARDS USA

DESCRIPTION:	
1B1 265	
<b>WIRING INSTL-BODY, 110V</b>	
SHEET:	ITEM/PART NO. REV
2 OF 6	000123867 / 32423401000

8 7 6 5 4 3 2 1 13-May-2018



1B1 RECEPTACLE ASM-GFI,US-15A  
000120175 / 322736-01-XXX  
265 RECEPTACLE ASM-GFI,CAN-15A  
000120176 / 322737-01-XXX  
(BLU) (GALLEY)

- 6 MOUNT RCP TO SIDEWALL BEHIND DRAWER IN GALLEY CABINET SEE DETAIL CA.
- 5 SEE WIRING INSTL-TV/DVD FOR ADDITIONAL INFORMATION.
- 4 WIRE ROUTED THRU FLOOR TO DINETTE.

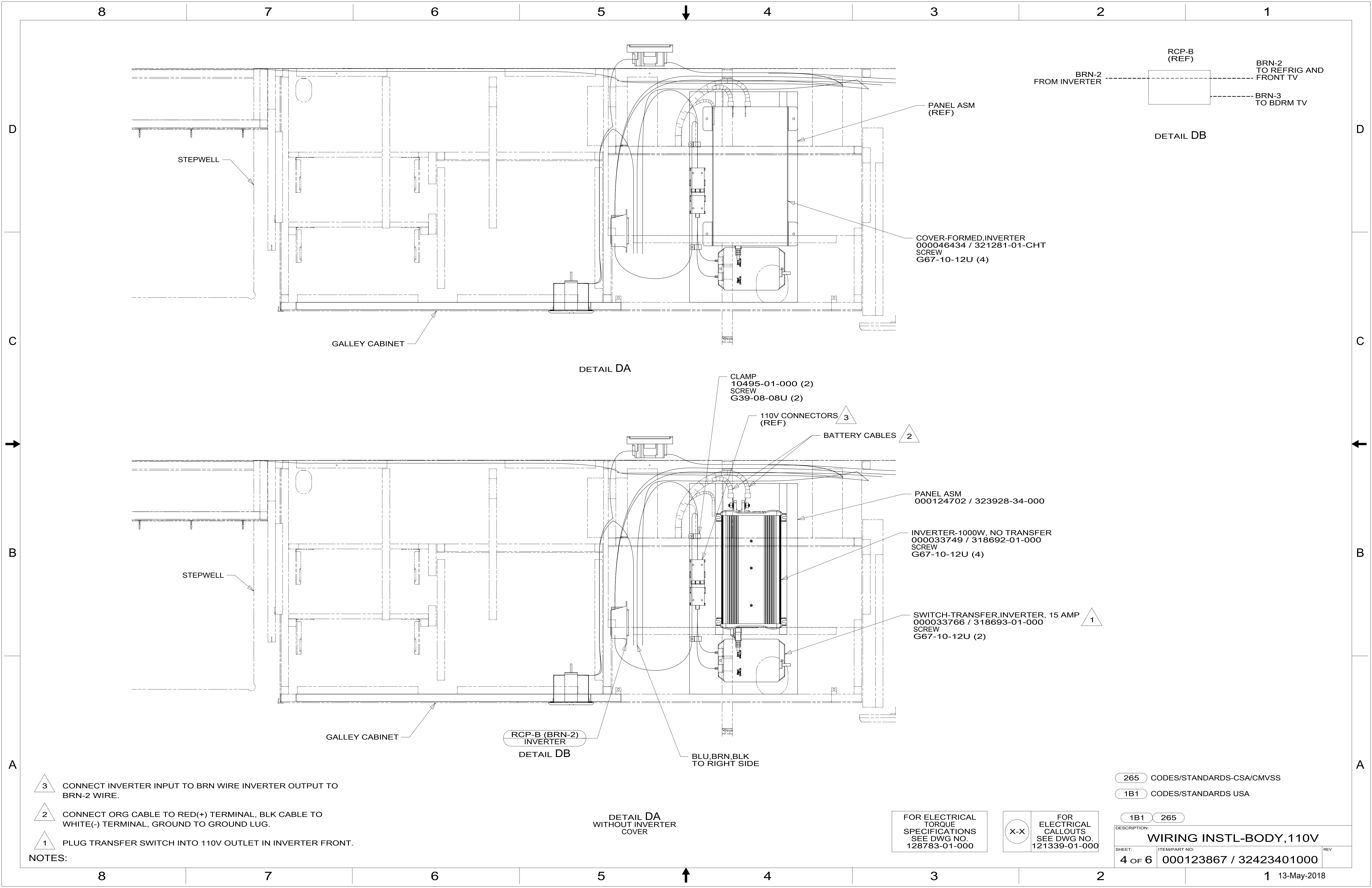
- NOTES:
- 3. ALL GROUND WIRE TO BE COVERED WITH TUBING 8041-02-000.
  - 2. ALL 110V WIRE TO BE CLAMPED WITH CLAMP 10497-05-000 WITHIN 200MM OF OUTLET BOXES, USE SCREW G67-10-12B.
  - 1. AT MINIMUM ALL WIRES TO BE SUPPORTED AND SECURED PER CODE REQUIREMENTS. USE CLAMP 10495 OR 10497 OR WIRE TIE 8343 OR 108046 AND SCREW G67-XX-XXX OR G56-XX-XXX AS APPROPRIATE FOR INSTALLATION.

FOR ELECTRICAL TORQUE SPECIFICATIONS SEE DWG NO. 128783-01-000

FOR ELECTRICAL CALLOUTS SEE DWG NO. 121339-01-000

- 39A EXT RECEPTACLE DPLX 120VAC
- 265 CODES/STANDARDS-CSA/CMVSS
- 1B1 CODES/STANDARDS USA

DESCRIPTION: <b>WIRING INSTL-BODY, 110V</b>		REV
SHEET: <b>3 OF 6</b>	ITEM/PART NO: <b>000123867 / 32423401000</b>	



STEPWELL

GALLEY CABINET

DETAIL DA

STEPWELL

GALLEY CABINET

RCP-B (BRN-2)  
INVERTER  
DETAIL DB

DETAIL DA  
WITHOUT INVERTER  
COVER

BLU, BRN, BLK  
TO RIGHT SIDE

PANEL ASM  
(REF)

COVER-FORMED, INVERTER  
000046434 / 321281-01-CHT  
SCREW  
G67-10-12U (4)

CLAMP  
10495-01-000 (2)  
SCREW  
G39-08-08U (2)

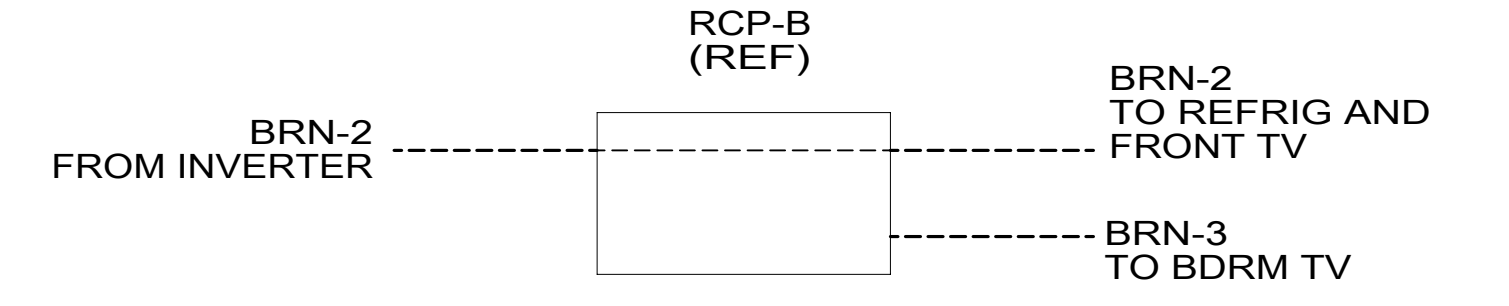
110V CONNECTORS  
(REF)

BATTERY CABLES 2

PANEL ASM  
000124702 / 323928-34-000

INVERTER-1000W, NO TRANSFER  
000033749 / 318692-01-000  
SCREW  
G67-10-12U (4)

SWITCH-TRANSFER, INVERTER, 15 AMP  
000033766 / 318693-01-000  
SCREW  
G67-10-12U (2)



DETAIL DB

- NOTES:
- 3 CONNECT INVERTER INPUT TO BRN WIRE INVERTER OUTPUT TO BRN-2 WIRE.
  - 2 CONNECT ORG CABLE TO RED(+) TERMINAL, BLK CABLE TO WHITE(-) TERMINAL, GROUND TO GROUND LUG.
  - 1 PLUG TRANSFER SWITCH INTO 110V OUTLET IN INVERTER FRONT.

265 CODES/STANDARDS-CSA/CMVSS

1B1 CODES/STANDARDS USA

1B1 265

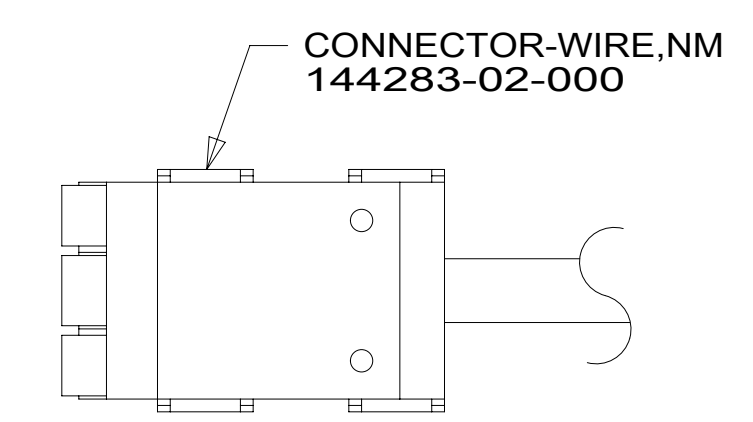
FOR ELECTRICAL  
TORQUE  
SPECIFICATIONS  
SEE DWG NO.  
128783-01-000

FOR  
ELECTRICAL  
CALLOUTS  
SEE DWG NO.  
121339-01-000

DESCRIPTION:  
**WIRING INSTL-BODY, 110V**

SHEET: 4 OF 6 ITEM/PART NO: 000123867 / 32423401000 REV

RED	1B1	136135-07-061	
	265	136136-07-061	
BLK	1B1	136135-06-087	
	265	136136-06-087	
BRN	1B1	136131-03-059	4
	265	136134-03-059	4
BLU	1B1	136131-02-094	
	265	136134-02-094	
MAIN	1B1	136137-01-018	5
	265	136138-01-018	5
GENERATOR CABLE ASM	1B1	136137-01-027	6
	265	136138-01-027	6
BLU-2	1B1	136131-24-045	
	265	136134-24-045	
BRN-2	1B1	136131-19-070	4
	265	136134-19-070	4
BRN-3	1B1	136131-22-065	
	265	136134-22-065	



DETAIL EA

- 6 WIRE PREP TO INSTALL ON POWER CORD BOX ASM. GENERATOR END WILL BE INSTALLED ON LINE
- 5 WIRE PREP TO INSTALL ON POWER CORD BOX ASM. LOAD CENTER END WILL BE INSTALLED ON LINE.
- 4 SEE DETAIL EA FOR CONNECTOR INSTALLATION.
3. SEE WIRING INSTL-BODY, 12V FOR ADDITIONAL INFORMATION.
2. SECURE WIRES TO BACKSIDE OF LOAD CENTER WITH WIRE TIE 116673-01-000.
1. ALL GROUND WIRES TO BE COVERED WITH TUBING 8041-02-000.

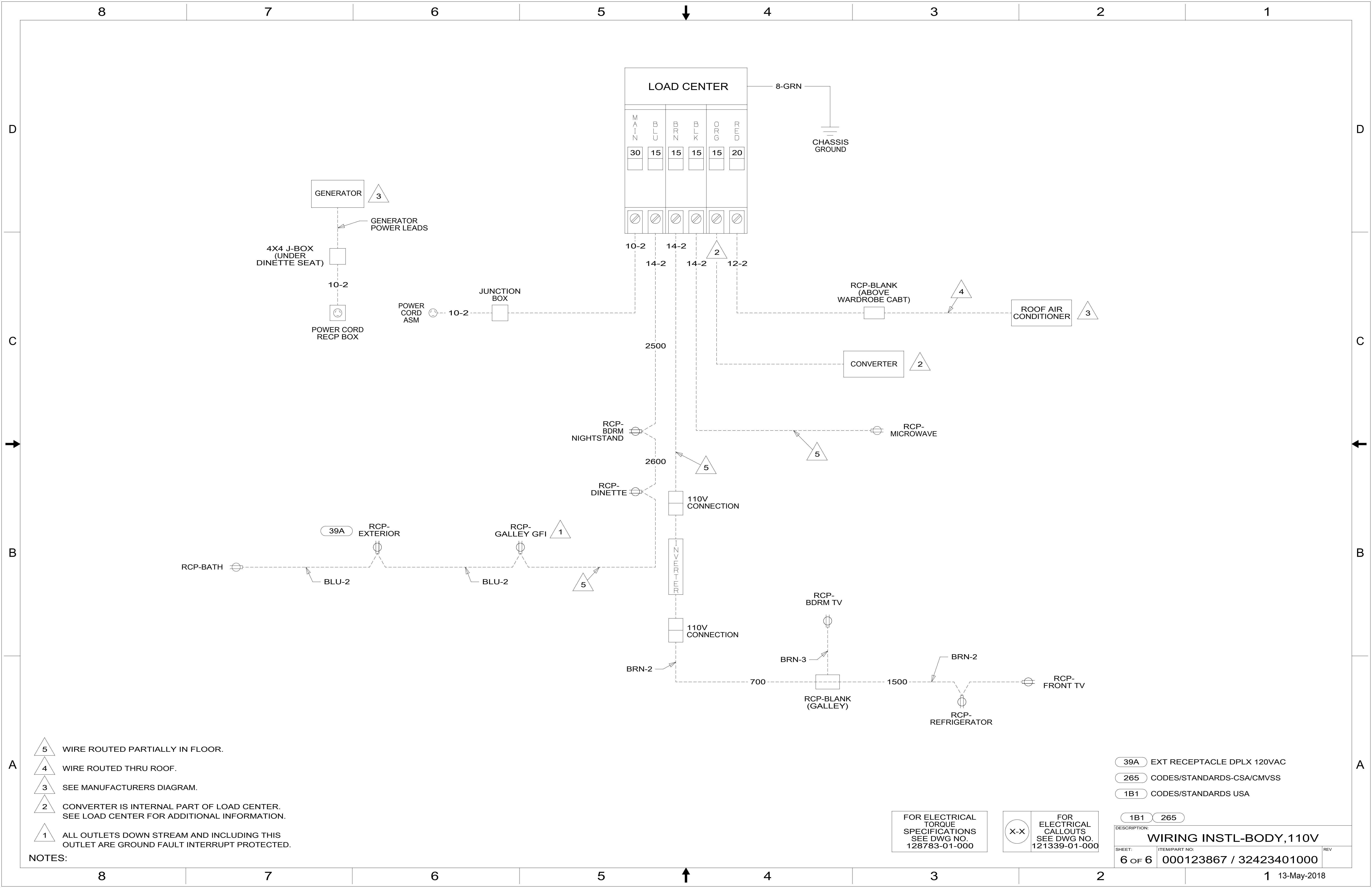
NOTES:

265 CODES/STANDARDS-CSA/CMVSS  
 1B1 CODES/STANDARDS USA

FOR ELECTRICAL TORQUE SPECIFICATIONS SEE DWG NO. 128783-01-000

FOR ELECTRICAL CALLOUTS SEE DWG NO. 121339-01-000

1B1	265
DESCRIPTION: <b>WIRING INSTL-BODY, 110V</b>	
SHEET: 5 OF 6	ITEM/PART NO: 000123867 / 32423401000
REV	



**LOAD CENTER**

MAIN	BLU	BRN	BLK	ORG	RED
30	15	15	15	15	20

8-GRN  
CHASSIS GROUND

GENERATOR 3

GENERATOR POWER LEADS

4X4 J-BOX (UNDER DINETTE SEAT)

10-2

POWER CORD RECP BOX

POWER CORD ASM

JUNCTION BOX

10-2

10-2

14-2

14-2

12-2

RCP-BLANK (ABOVE WARDROBE CABT)

4

ROOF AIR CONDITIONER 3

CONVERTER 2

RCP-BDRM NIGHTSTAND

RCP-MICROWAVE

RCP-DINETTE

110V CONNECTION

39A RCP-EXTERIOR

RCP-GALLEY GFI 1

RCP-BATH

BLU-2

BLU-2

5

110V CONNECTION

110V CONNECTION

RCP-BDRM TV

BRN-3

RCP-BLANK (GALLEY)

1500

RCP-REFRIGERATOR

BRN-2

700

1500

RCP-FRONT TV

- NOTES:**
- 5 WIRE ROUTED PARTIALLY IN FLOOR.
  - 4 WIRE ROUTED THRU ROOF.
  - 3 SEE MANUFACTURERS DIAGRAM.
  - 2 CONVERTER IS INTERNAL PART OF LOAD CENTER. SEE LOAD CENTER FOR ADDITIONAL INFORMATION.
  - 1 ALL OUTLETS DOWN STREAM AND INCLUDING THIS OUTLET ARE GROUND FAULT INTERRUPT PROTECTED.

- 39A EXT RECEPTACLE DPLX 120VAC
- 265 CODES/STANDARDS-CSA/CMVSS
- 1B1 CODES/STANDARDS USA

FOR ELECTRICAL TORQUE SPECIFICATIONS SEE DWG NO. 128783-01-000

FOR ELECTRICAL CALLOUTS SEE DWG NO. 121339-01-000

<b>DESCRIPTION:</b>		
<b>WIRING INSTL-BODY, 110V</b>		
SHEET:	ITEM/PART NO.:	REV:
<b>6 OF 6</b>	<b>000123867 / 32423401000</b>	