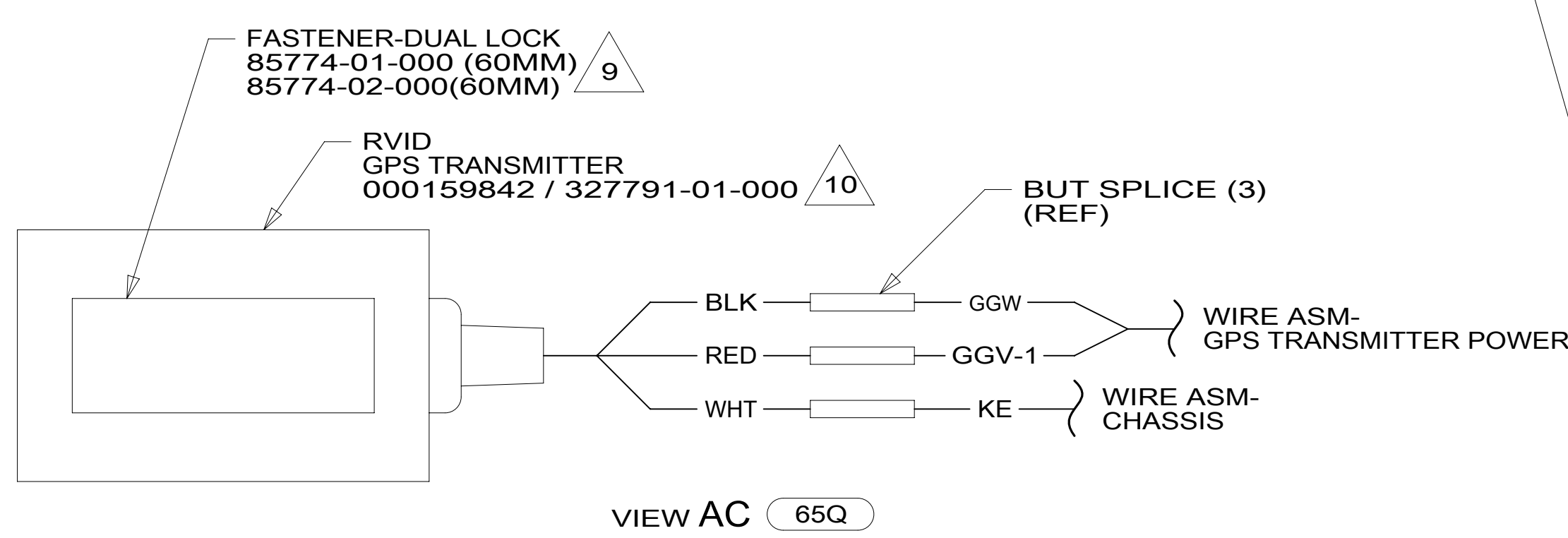


- NOTES:**
- 1. SECURE CONDUIT 41953, TAB AS REQUIRED, OVER ALL WIRES IN CONTACT WITH SHARP EDGES.
 - 2. USE WIRE TIES 8343-04-000 AND 116673-02-000 APPROXIMATELY 600MM ON CENTER UNLESS OTHERWISE SPECIFIED.
 - 3. SEE RADIO/MONITOR INSTL FOR ADDITIONAL INFORMATION.
 - 4. CUT LIGHT GREEN/RED WIRE FROM PARK BRAKE SWITCH AND RECONNECT TO CIRCUIT DY OF CHASSIS ASM AS SHOWN.
 - 5. SEE BATTERY INSTL FOR ADDITIONAL INFORMATION.
 - 6. FUSE LOCATED UNDER DASH BY STEERING COLUMN.
 - 7. SEE WIRING INSTL-BODY, 110V FOR ADDITIONAL INFORMATION.
 - 8. WIRE ASM-GPS TRANSMITTER POWER TO BE ROUTED FROM CHASSIS ELECTRICAL BOX TO TRANSMITTER LOCATED IN POCKET UNDER STEERING COLUMN
 - 9. ATTACH DUAL LOCK TO BOTTOM OF TRANSMITTER AND BOTTOM OF POCKET IN DASH.
 - 10. WHITE LABEL ON TRANSMITTER MUST FACE UPWARD.



FOR ELECTRICAL TORQUE SPECIFICATIONS SEE DWG NO. 128783-01-000

FOR ELECTRICAL CALLOUTS SEE DWG NO. 121339-01-000

65Q RENTAL - APOLLO	
265 CODES/STANDARDS-CSA/CMVSS	
1B1 CODES/STANDARDS USA	
1B1	265
WINNEBAGO COPYRIGHT 2016 WINNEBAGO INDUSTRIES, INC.	
DSNR:	ALL DIMENSIONS ARE IN MILLIMETERS
DIFFR:	
UNSPECIFIED TOLERANCES:	MATERIAL:
WHOLE DIM (X) :	3
ONE-PLACE (X.X) :	1.5
TWO-PLACE (X.XX) :	0.50
ANGLE :	1°
REFER TO ES0018 FOR FASTENER TIGHTENING GUIDELINES	WEIGHT: (LBS) FIRST USED:
	19 900-SER
WIRING INSTL-CHASSIS	
SHEET: 1 OF 2	ITEM/PART NO: 000123866 / 32423201000
REF:	1 29-Aug-2018

8 7 6 5 4 3 2 1

D

D

C

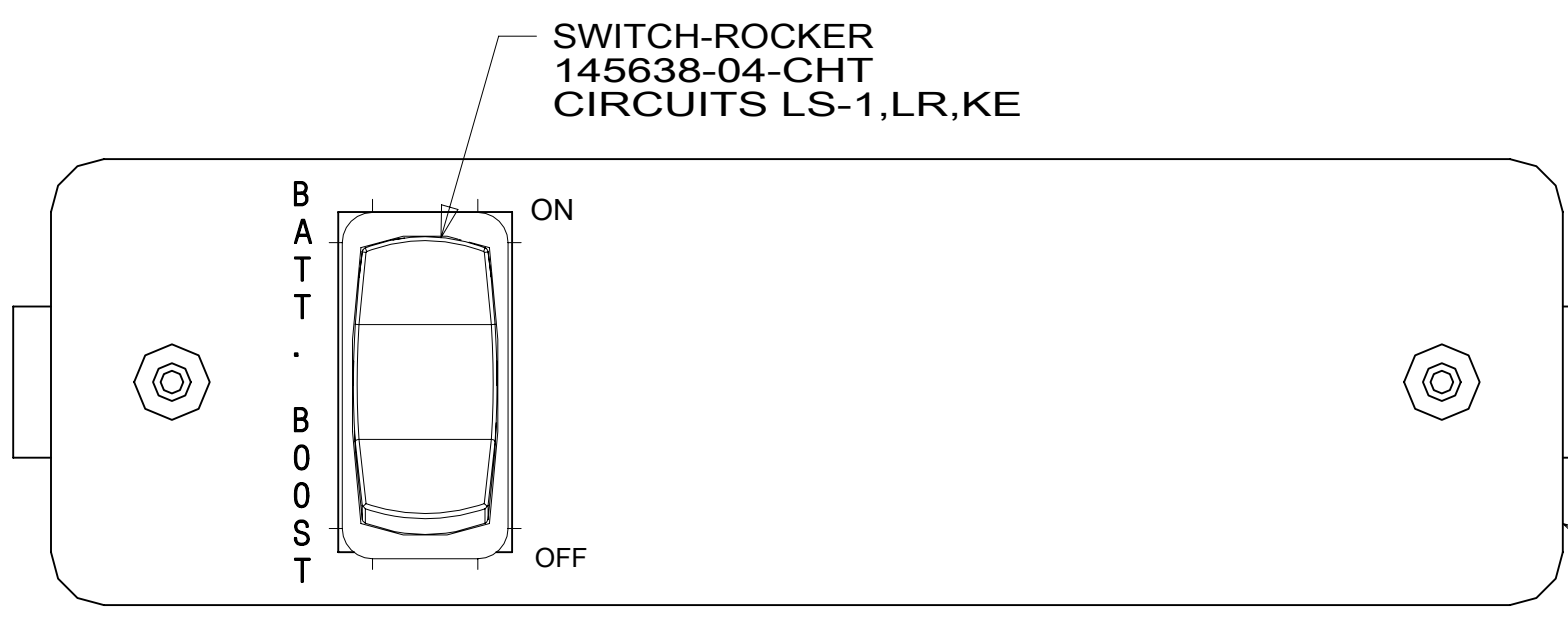
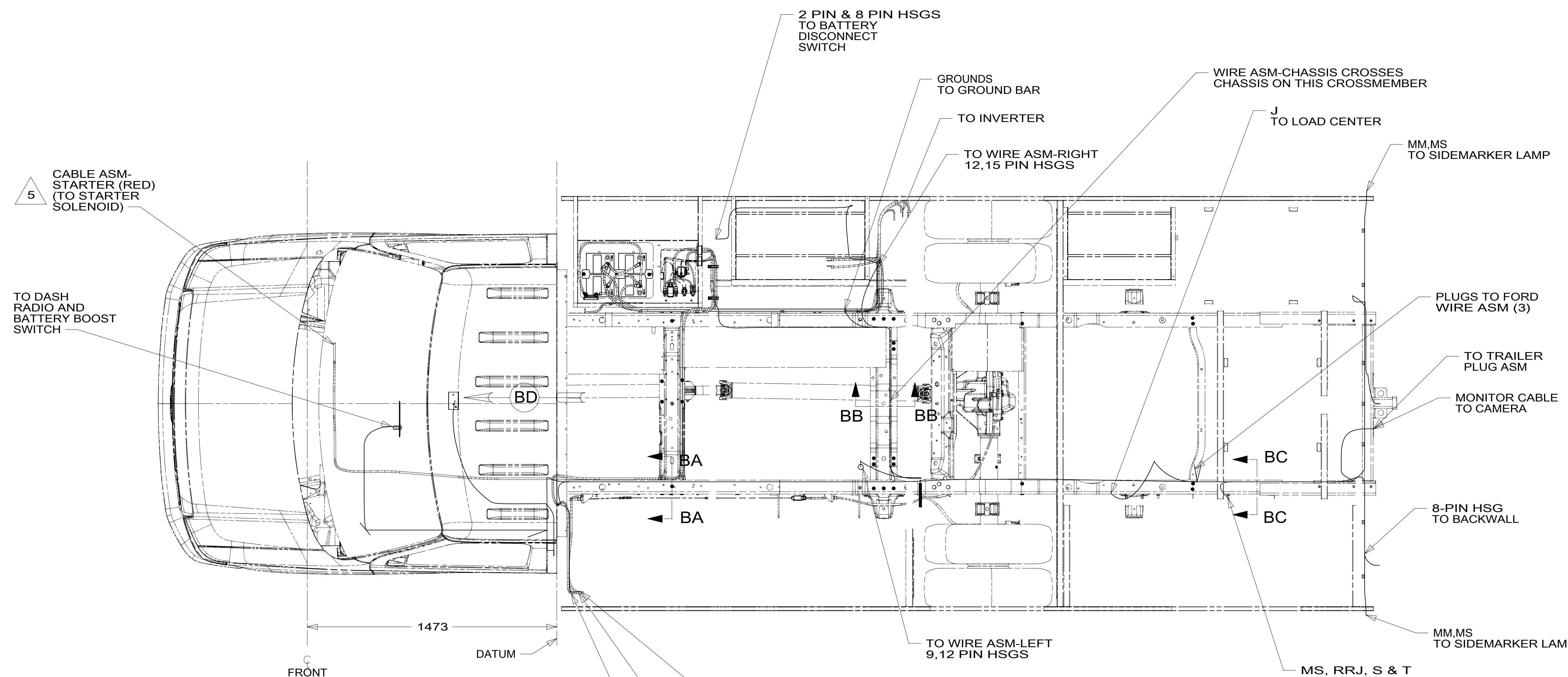
C

B

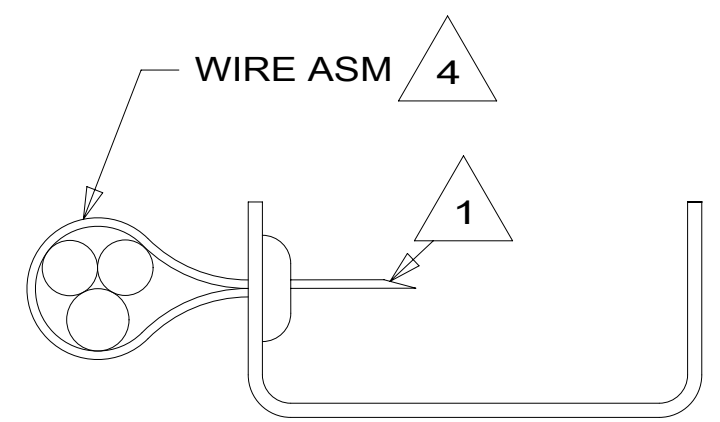
B

A

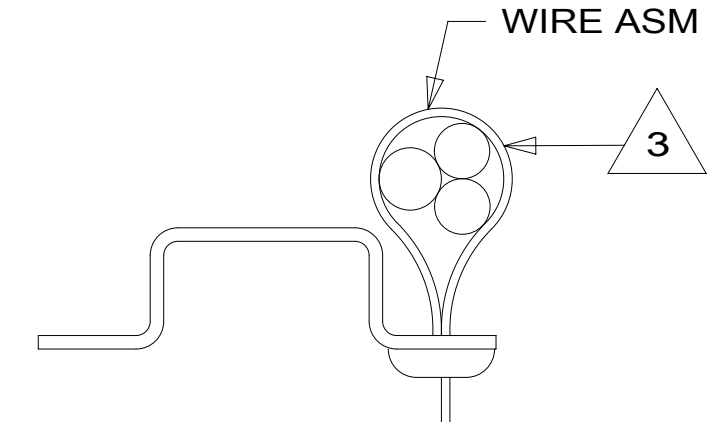
A



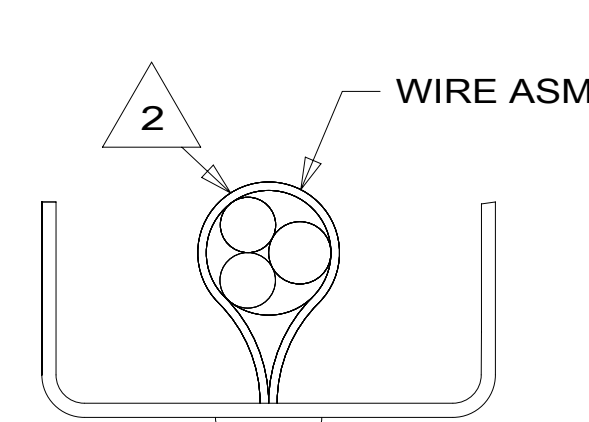
VIEW BD



SECTION BA-BA (OPPOSITE FOR RIGHT SIDE)



SECTION BB-BB



SECTION BC-BC

- NOTES:
- 5 SEE BATTERY INSTL FOR ADDITIONAL INFORMATION.
 - 4 WIRES TO BE TIED TO CROSS MEMBER USING EXISTING HOLES.
 - 3 WIRES TO BE TIED TO TOP OF RAIL USING EXISTING HOLES.
 - 2 WIRES TO BE TIED TO INSIDE OF RAIL USING EXISTING HOLES.
 - 1 CUT OFF EXCESS END OF WIRE TIE.

FOR ELECTRICAL TORQUE SPECIFICATIONS SEE DWG NO. 128783-01-000

FOR ELECTRICAL CALLOUTS SEE DWG NO. 121339-01-000

265 CODES/STANDARDS-CSA/CMVSS
1B1 CODES/STANDARDS USA

DESCRIPTION:		1B1 265	
WIRING INSTL-CHASSIS			
SHEET:	ITEM/PART NO.:	REV	
2 OF 2	000123866 / 32423201000		