

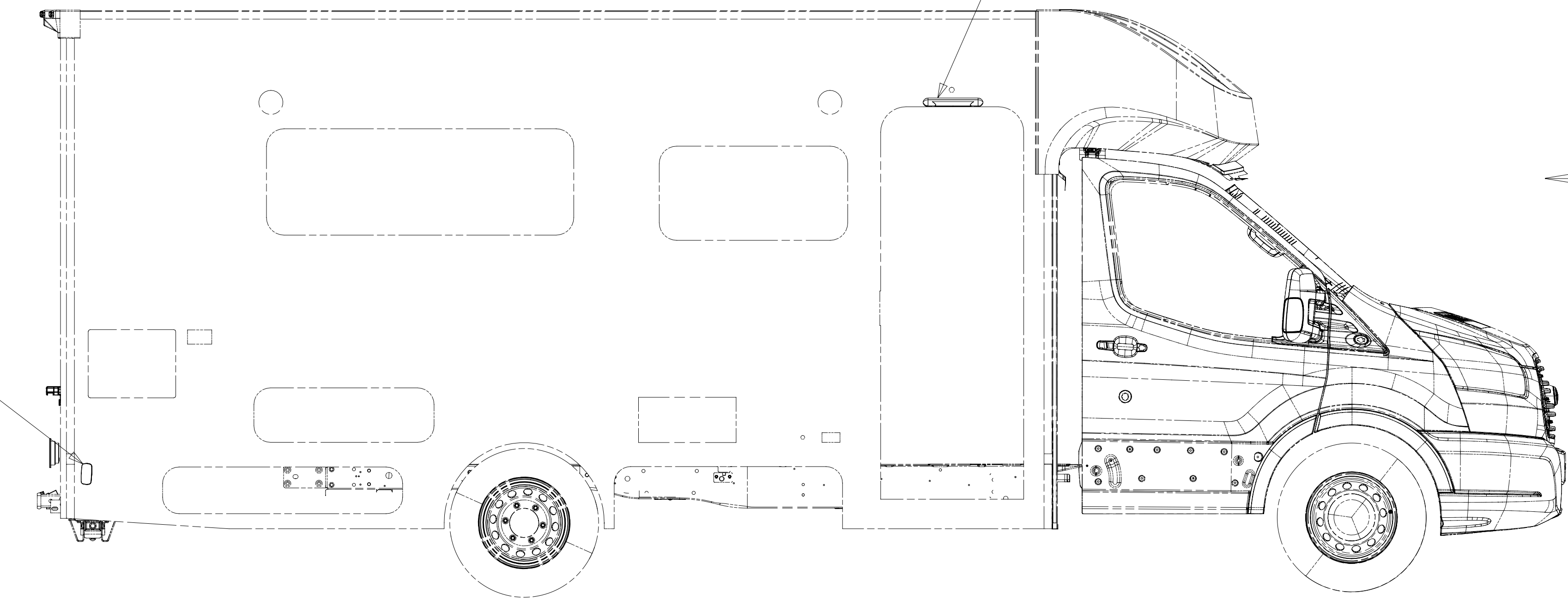
8 7 6 5 4 3 2 1

BB

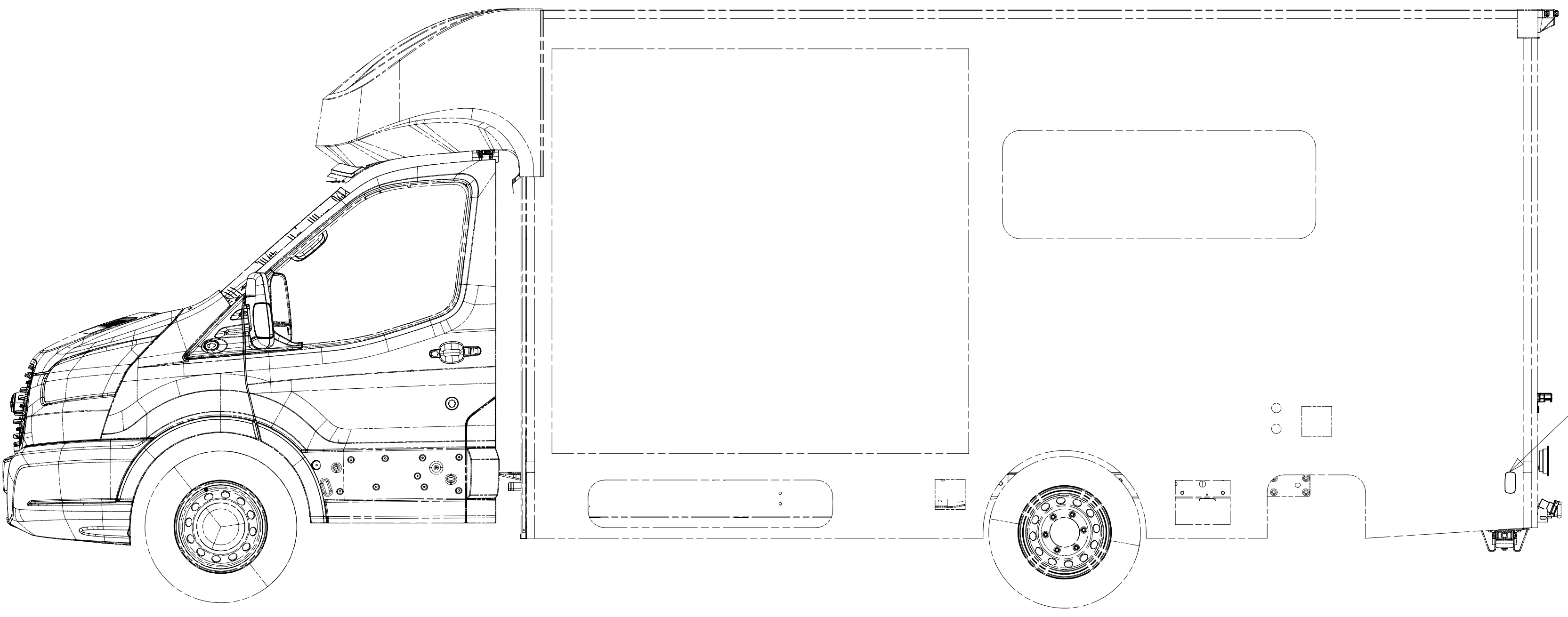
LAMP-MARKER, W RED LENS
193802-04-000
SCREW
G11-08-12U (EXT)(2)

LAMP ASM-PORCH
184120-01-CHT
SCREW
G68-06-10U (2)
CONNECTOR
58028-01-000 (2)

BA



LAMP-MARKER, W RED LENS
193802-04-000
SCREW
G11-08-12U (EXT)(2)



FOR ELECTRICAL
TORQUE
SPECIFICATIONS
SEE DWG NO.
128783-01-000

FOR
ELECTRICAL
CALLOUTS
SEE DWG NO.
121339-01-000



DSNR:		ALL DIMENSIONS ARE IN MILLIMETERS	
DFFR:		MATERIAL:	
UNSPECIFIED TOLERANCES:			
WHOLE DIM (X)	: 3		
ONE-PLACE (X.X)	: 1.5		
TWO-PLACE (X.XX)	: 0.50		
ANGLE	: 1°		

REFER TO ES0018 FOR FASTENER TIGHTENING GUIDELINES

WEIGHT: (LBS) FIRST USED: 18 423A

DESCRIPTION: WIRING INSTL-EXTERIOR LAMPS

SHEET: 1 OF 2 ITEM/PART NO.: 000122150 / 32323501000 REV

8 7 6 5 4 3 2 1

REF: 1 06-Sep-2018

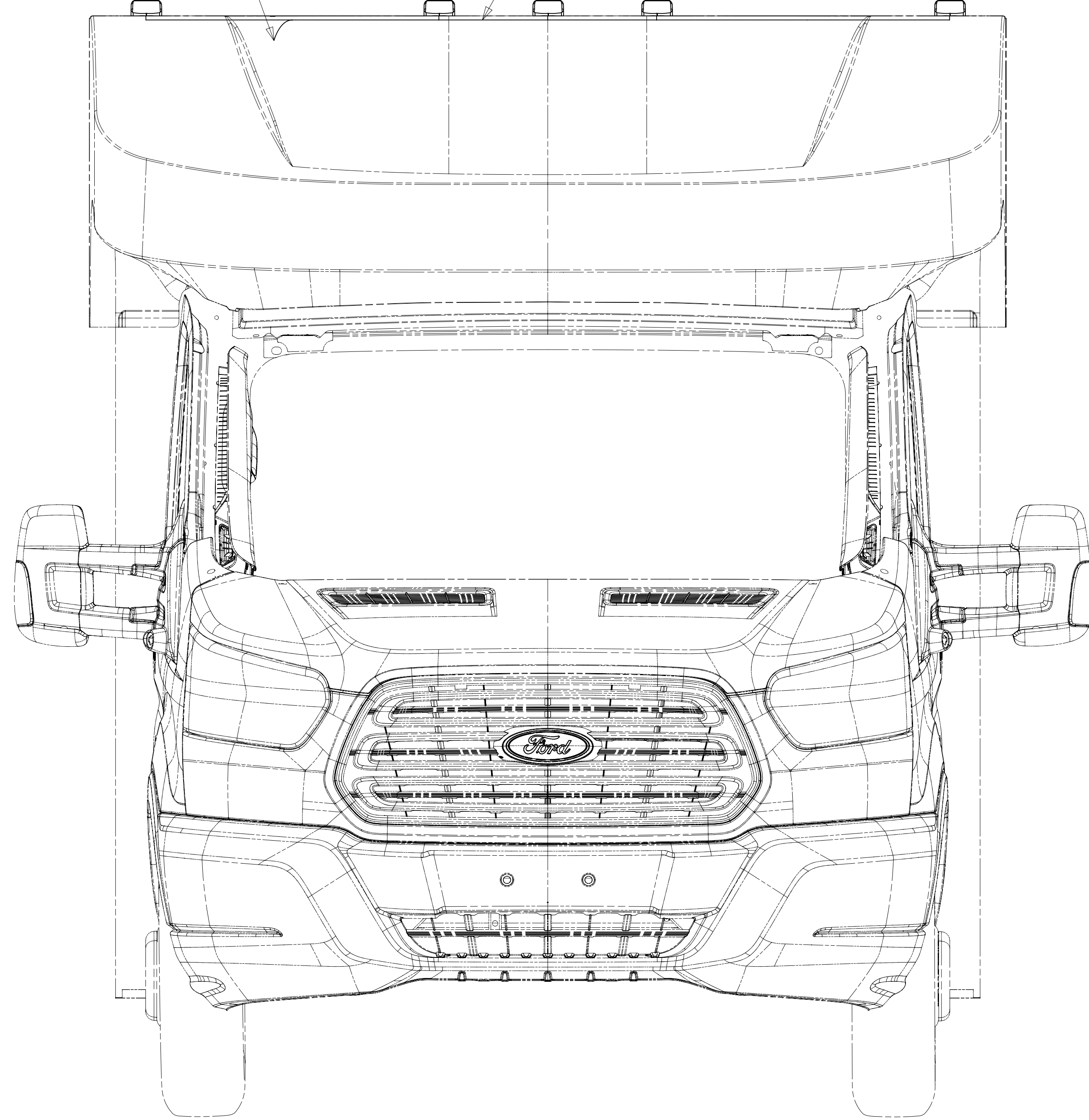
2 PIN HOUSING
TO WIRE ASM-ROOF

WIRE ASM-CLEARANCE LAMP
191816-01-000

LAMP ASM-CLEARANCE,FRONT
170776-01-000 (5)

WIRE ASM-CLEARANCE LAMPS
191817-01-000

LAMP ASM-CLEARANCE 2



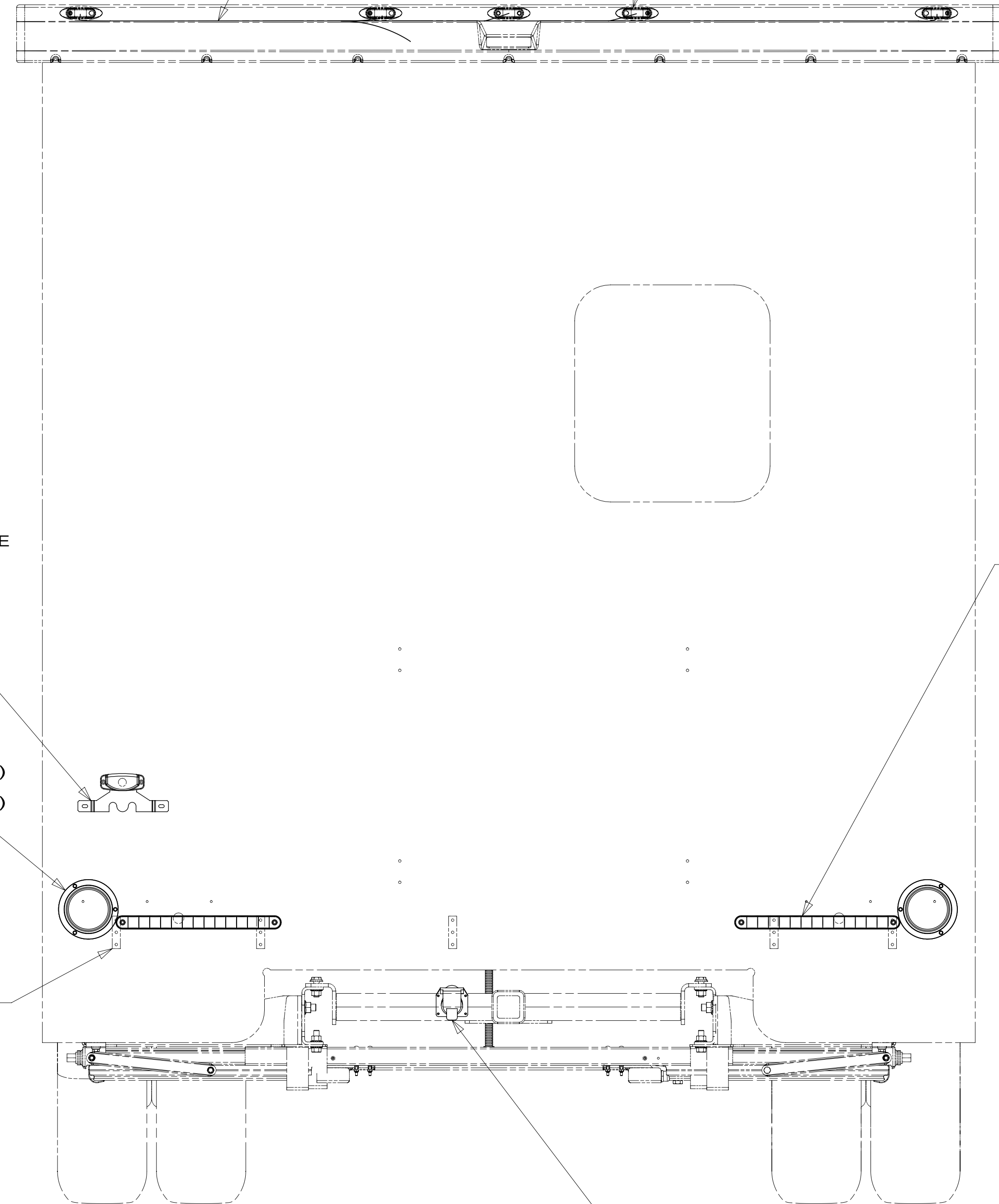
VIEW BA

BRACKET-LICENSE PLATE
066432-03-000
SCREW
G67-10-129 (2)
LIGHT-LICENSE BLACK
066432-02-000
SCREW
G39-08-12U (EXT)(2)
CONNECTOR
058028-01-000 (2)

3 LAMP ASM-BACKUP
184674-01-000 (2)
BEZEL-LAMP
184674-02-000 (2)
SCREW
G11-08-12U (6)

4 STRAP-W/HOLES
(REF)
WIRE TIE
08343-02-000 (5)

LAMP ASM-STOP/TURN/TAI
184653-01-000 (2)
SCREW
G11-08-12U (4) 1



VIEW BB

CONNECTOR-TRAILER
157593-01-000
SCREW
101618-01-000 (4) 240

- NOTES:
- 4 CLAMP TRAILER HITCH AND EXTERIOR LAMP WIRE ALONG BOTTOM OF BACKWALL ASSEMBLY.
 - 3 CUT CONNECTOR OFF OF LIGHT ASM. CONNECT CIRCUIT TR TO BLACK WIRE, CONNECT CIRCUIT MS TO WHITE WIRE.
 - 2 SEE TRIM ASM-BACKWALL,UPPER FOR ADDITIONAL INFORMATION.
 - 1 CONNECT CIRCUIT SC OR SD TO RED WIRE, CONNECT CIRCUIT MM TO BROWN WIRE, CONNECT CIRCUIT MS TO WHITE WIRE.

- 240 TRAILER HITCH
- 265 CODES/STANDARDS-CSA/CMVSS
- 1B1 CODES/STANDARDS USA

FOR ELECTRICAL
TORQUE
SPECIFICATIONS
SEE DWG NO.
128783-01-000

FOR
ELECTRICAL
CALLOUTS
SEE DWG NO.
121339-01-000

DESCRIPTION: WIRING INSTL-EXTERIOR LAMPS	
SHEET:	ITEM/PART NO.:
2 OF 2	000122150 / 32323501000
REV	REV