

8 7 6 5 4 3 2 1

ALTERNATOR-120 AMP, 58V
000129757 / 325336-01-000

HA GA

KIT-INSTL,ALTERNATOR,PROMASTER 3.6L
000129755 / 325335-01-000

CABLE ASM-ALTERNATOR (RED)

FA

BA

DA

DB

CA

D

D

C

C

B

B

A

A

8 7 6 5 4 3 2 1

- 265 CODES/STANDARDS-CSA/CMVSS
- 1B1 CODES/STANDARDS USA
- 1B1 265

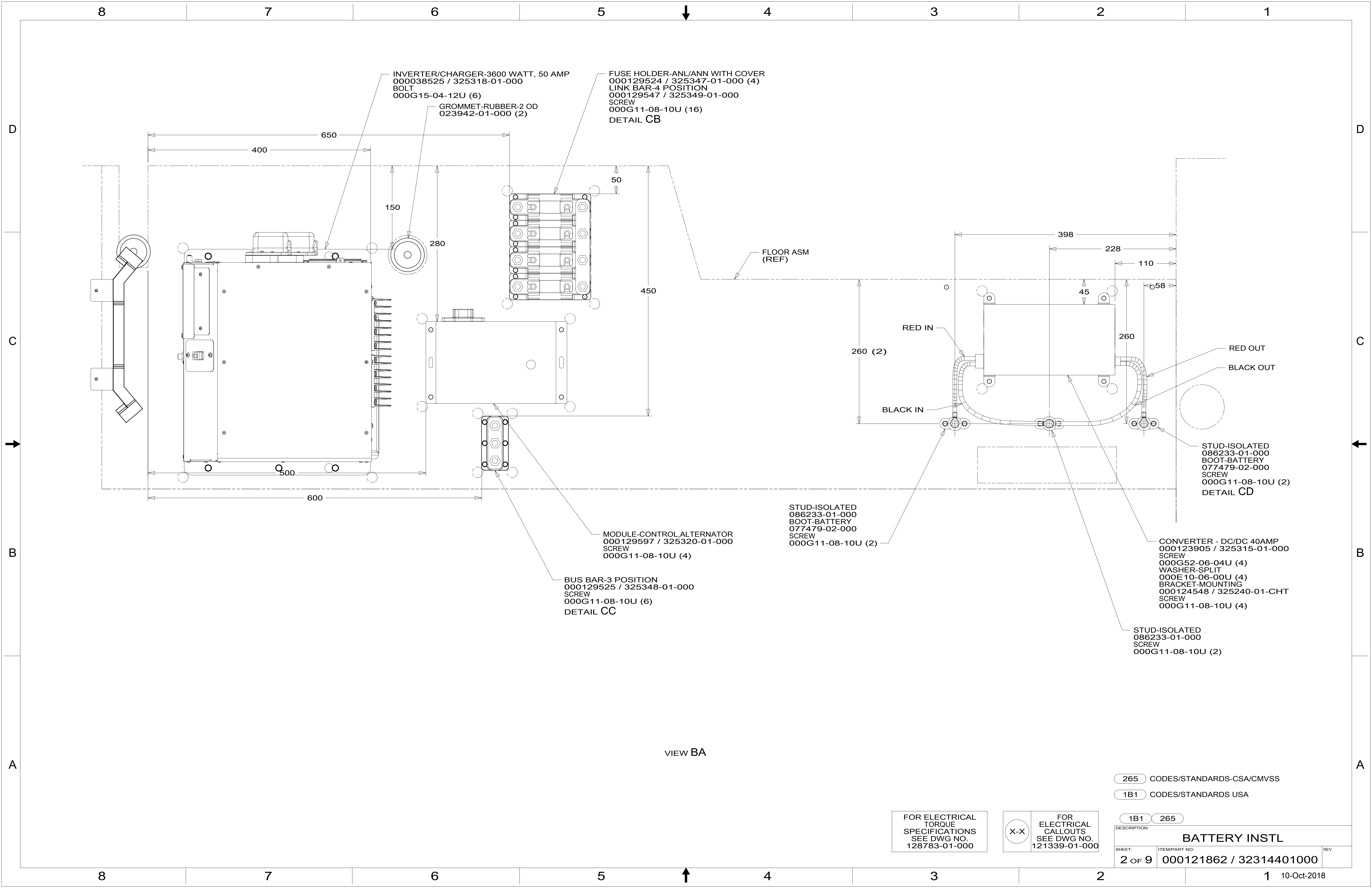


DSNR:		ALL DIMENSIONS ARE IN MILLIMETERS	
DFTR:		MATERIAL:	
UNSPECIFIED TOLERANCES:			
WHOLE DIM (X)	: 3		
ONE-PLACE (X.X)	: 1.5		
TWO-PLACE (X.XX)	: 0.50		
ANGLE	: 1°		
REFER TO ES0018 FOR FASTENER TIGHTENING GUIDELINES		WEIGHT: (LBS)	FIRST USED:
			19 259KL

FOR ELECTRICAL TORQUE SPECIFICATIONS SEE DWG NO. 128783-01-000

FOR ELECTRICAL CALLOUTS SEE DWG NO. 121339-01-000

DESCRIPTION:		
BATTERY INSTL		
SHEET:	ITEM/PART NO.:	REV:
1 OF 9	000121862 / 32314401000	
REF:		
		1 10-Oct-2018



INVERTER/CHARGER-3600 WATT, 50 AMP
 000038525 / 325318-01-000
 BOLT
 000G15-04-12U (6)

GROMMET-RUBBER-2 OD
 023942-01-000 (2)

FUSE HOLDER-ANL/ANN WITH COVER
 000129524 / 325347-01-000 (4)
 LINK BAR-4 POSITION
 000129547 / 325349-01-000
 SCREW
 000G11-08-10U (16)
 DETAIL CB

FLOOR ASM
 (REF)

MODULE-CONTROL ALTERNATOR
 000129597 / 325320-01-000
 SCREW
 000G11-08-10U (4)

BUS BAR-3 POSITION
 000129525 / 325348-01-000
 SCREW
 000G11-08-10U (6)
 DETAIL CC

STUD-ISOLATED
 086233-01-000
 BOOT-BATTERY
 077479-02-000
 SCREW
 000G11-08-10U (2)

STUD-ISOLATED
 086233-01-000
 BOOT-BATTERY
 077479-02-000
 SCREW
 000G11-08-10U (2)
 DETAIL CD

CONVERTER - DC/DC 40AMP
 000123905 / 325315-01-000
 SCREW
 000G52-06-04U (4)
 WASHER-SPLIT
 000E10-06-00U (4)
 BRACKET-MOUNTING
 000124548 / 325240-01-CHT
 SCREW
 000G11-08-10U (4)

STUD-ISOLATED
 086233-01-000
 SCREW
 000G11-08-10U (2)

VIEW BA

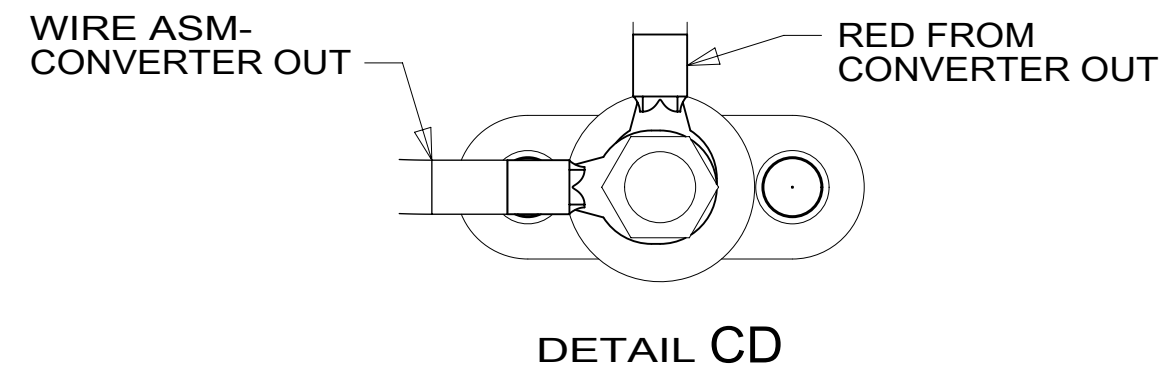
265 CODES/STANDARDS-CSA/CMVSS
 1B1 CODES/STANDARDS USA

FOR ELECTRICAL
 TORQUE
 SPECIFICATIONS
 SEE DWG NO.
 128783-01-000

FOR
 ELECTRICAL
 CALLOUTS
 SEE DWG NO.
 121339-01-000

DESCRIPTION:		1B1 265	
BATTERY INSTL			
SHEET:	ITEM/PART NO.:	REV	
2 OF 9	000121862 / 32314401000		

CABLE ASM-ALTERNATOR (RED)	175207-36-046
CABLE ASM-COACH BATTERY (YEL)	175207-52-019 (2)
CABLE ASM-COACH BATTERY GND 1 (BLK)	175211-02-014
CABLE ASM-COACH BATTERY GND 2 (BLK)	175211-02-023
CABLE ASM-BUSS BAR GND	133566-12-020
CABLE ASM-INVERTER (ORG)	175207-62-004
CABLE ASM-INVERTER GND (BLK)	175211-02-007
CABLE ASM-INVERTER CASE GND (GRN)	136145-05-011



PANEL-BAFFLE ASM
000163469 / 328915-01-XXX
SCREW
000G11-08-10U (4)

FUSE-35 AMP, VERY FAST ACTING
000130588 / 325529-01-000

CABLE ASM-BUSS BAR GND

CABLE ASM-COACH BATTERY GND 2 (BLK)

CABLE ASM-COACH BATTERY (YEL)

ISOLATED STUD
DETAIL CD

PANEL-BAFFLE ASM
000162739 / 328886-01-XXX
SCREW
000G11-08-10U (2)

RED FROM WIRE ASM-CONVERTER IN

CABLE ASM-ALTERNATOR (RED)

CABLE ASM-INVERTER (ORG)

CIRCUIT HS FROM WIRE ASM-SOLAR SYSTEM

DETAIL CB

CIRCUIT +58V FROM WIRE ASM-LITHIUM SYSTEM

CABLE ASM-COACH BATTERY (YEL)

FUSE-250 AMP, VERY FAST ACTING
000130590 / 325529-03-000

CABLE ASM-COACH BATTERY (YEL)

FUSE-250 AMP, VERY FAST ACTING
000130590 / 325529-03-000

FUSE-35 AMP, VERY FAST ACTING
000130588 / 325529-01-000

GRN FROM WIRE ASM-CONVERTER IN

CABLE ASM-BUSS BAR GND

CABLE ASM-INVERTER GND (BLK)

DETAIL CC

CIRCUIT HT FROM WIRE ASM-SOLAR SYSTEM

CABLE ASM-COACH BATTERY GND 2 (BLK)

GROUNDS FROM WIRE ASM-LITHIUM SYSTEM

VIEW CA

WIRE ASM-CONVERTER IN
000130570 / 325517-01-000

CONNECT TO DISTRIBUTION PANEL-12V

WIRE ASM-CONVERTER OUT
000130586 / 32553001000

2 CONNECT RING TERMINAL TO ISOLATED STUD WITH RED OUT FROM CONVERTER AND CONNECT SOLDERED END TO DISTRIBUTION PANEL-12V

1 CONNECT RED TO RED IN AND CONNECT GRN TO BLACK IN.

NOTES:

265 CODES/STANDARDS-CSA/CMVSS

1B1 CODES/STANDARDS USA

1B1 265

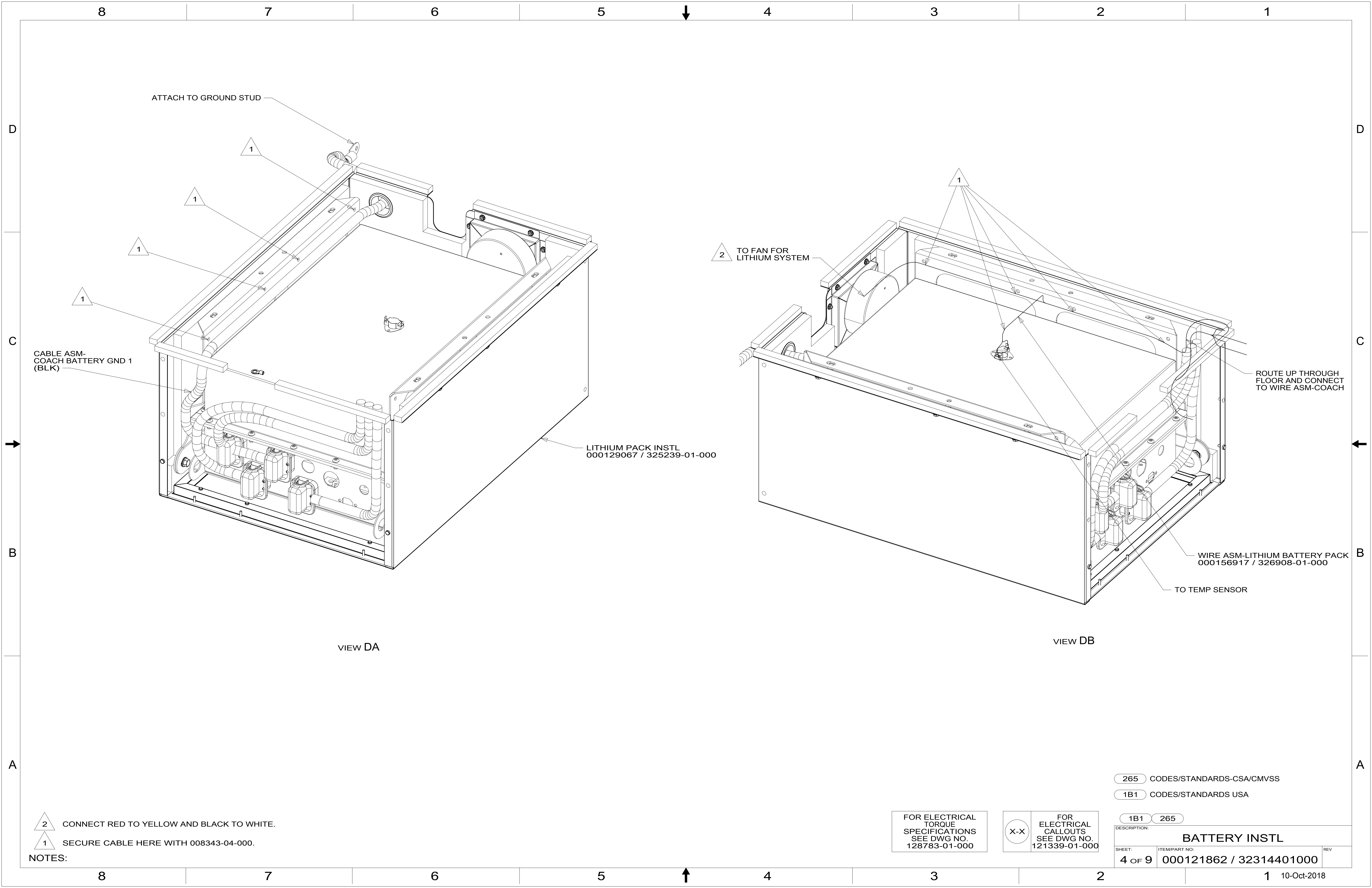
FOR ELECTRICAL TORQUE SPECIFICATIONS SEE DWG NO. 128783-01-000

FOR ELECTRICAL CALLOUTS SEE DWG NO. 121339-01-000

DESCRIPTION: BATTERY INSTL

SHEET: 3 OF 9 ITEM/PART NO: 000121862 / 32314401000 REV

10-Oct-2018



ATTACH TO GROUND STUD

1

1

1

1

CABLE ASM-COACH BATTERY GND 1 (BLK)

LITHIUM PACK INSTL
000129067 / 325239-01-000

VIEW DA

2 TO FAN FOR LITHIUM SYSTEM

1

ROUTE UP THROUGH FLOOR AND CONNECT TO WIRE ASM-COACH

WIRE ASM-LITHIUM BATTERY PACK
000156917 / 326908-01-000

TO TEMP SENSOR

VIEW DB

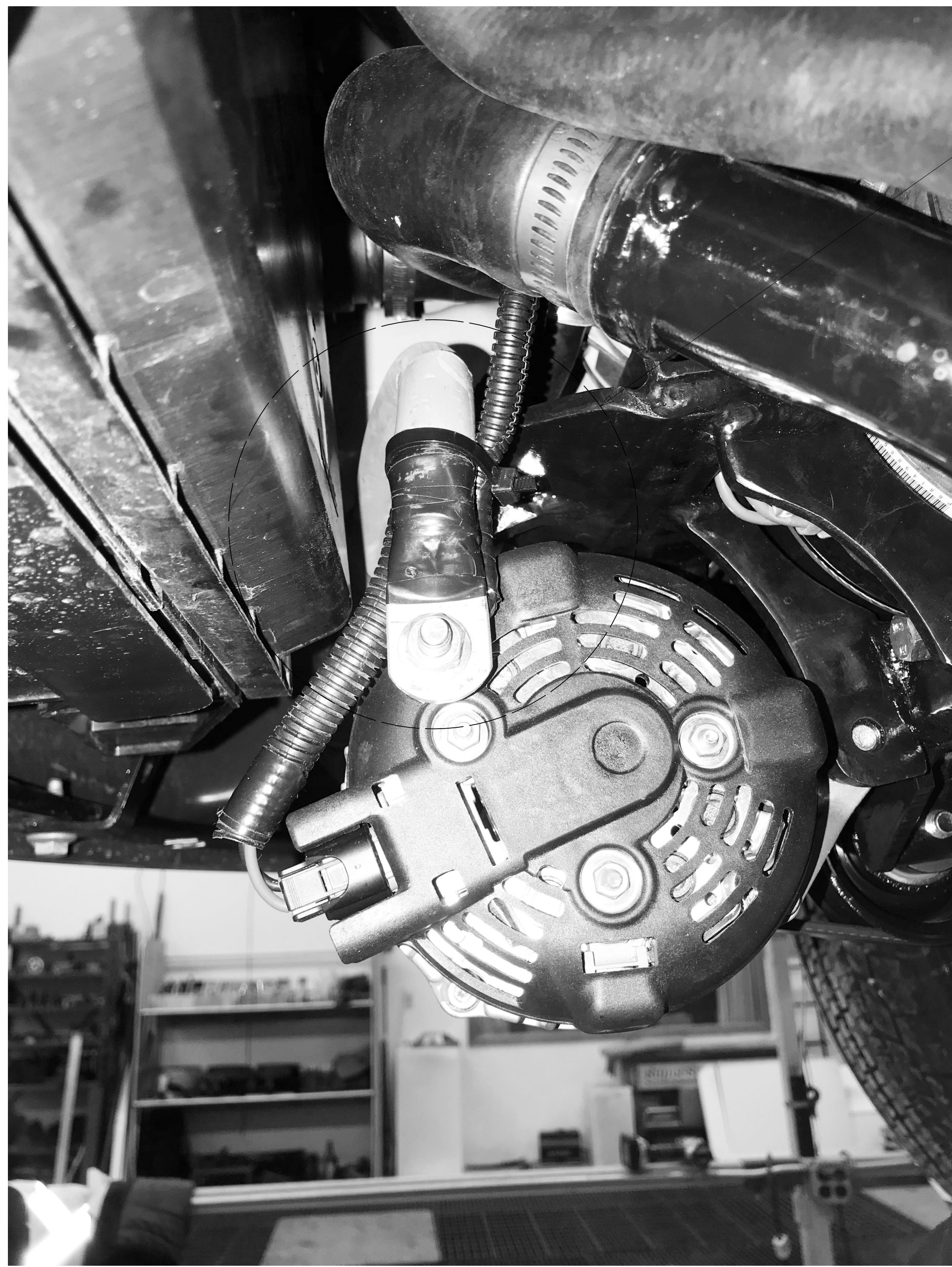
- NOTES:
- 2 CONNECT RED TO YELLOW AND BLACK TO WHITE.
 - 1 SECURE CABLE HERE WITH 008343-04-000.

FOR ELECTRICAL TORQUE SPECIFICATIONS SEE DWG NO. 128783-01-000

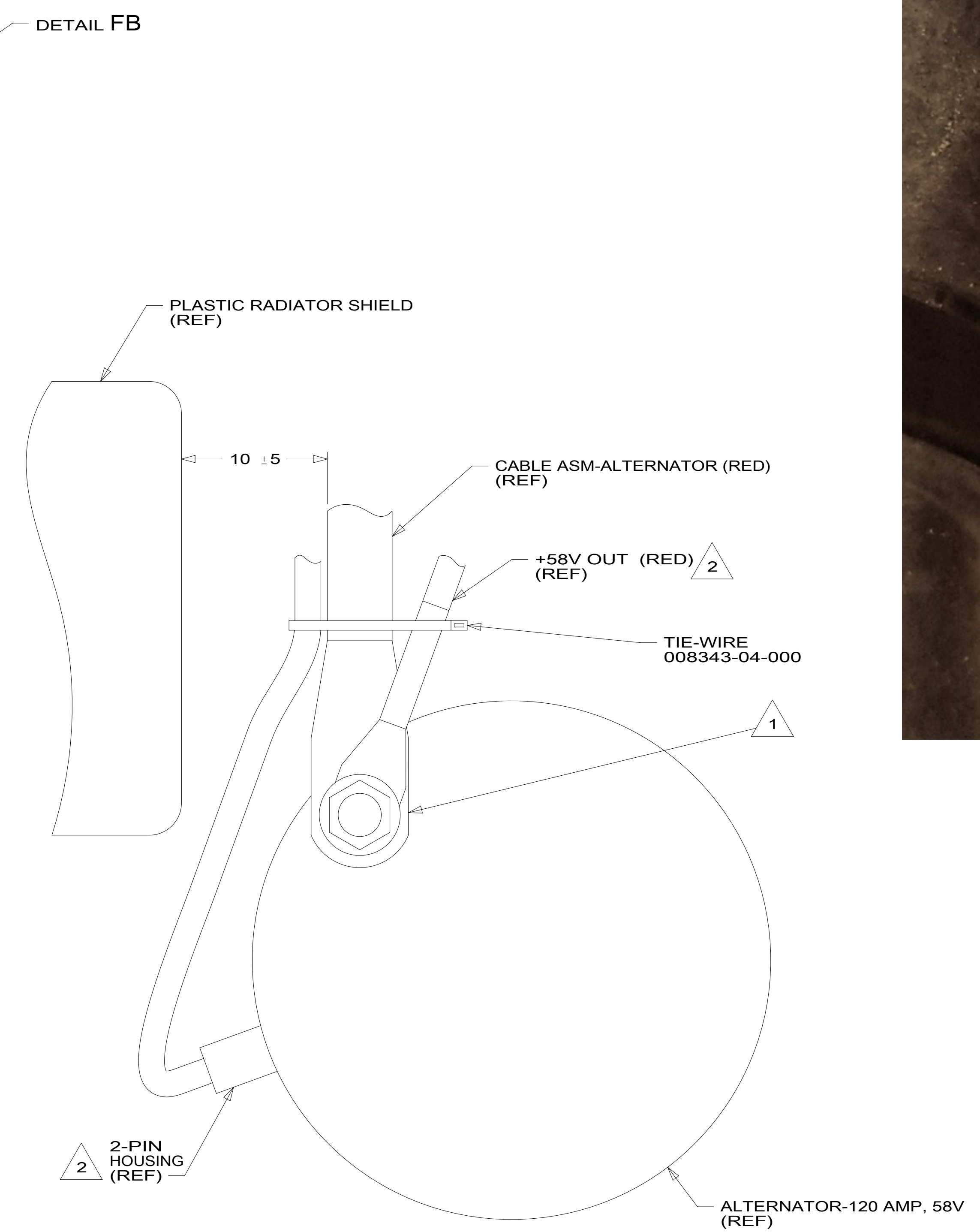
FOR ELECTRICAL CALLOUTS SEE DWG NO. 121339-01-000

- 265 CODES/STANDARDS-CSA/CMVSS
- 1B1 CODES/STANDARDS USA

DESCRIPTION:		1B1 265	
BATTERY INSTL			
SHEET:	ITEM/PART NO.:	REV	
4 OF 9	000121862 / 32314401000		



VIEW FA



VIEW FA



VIEW FB

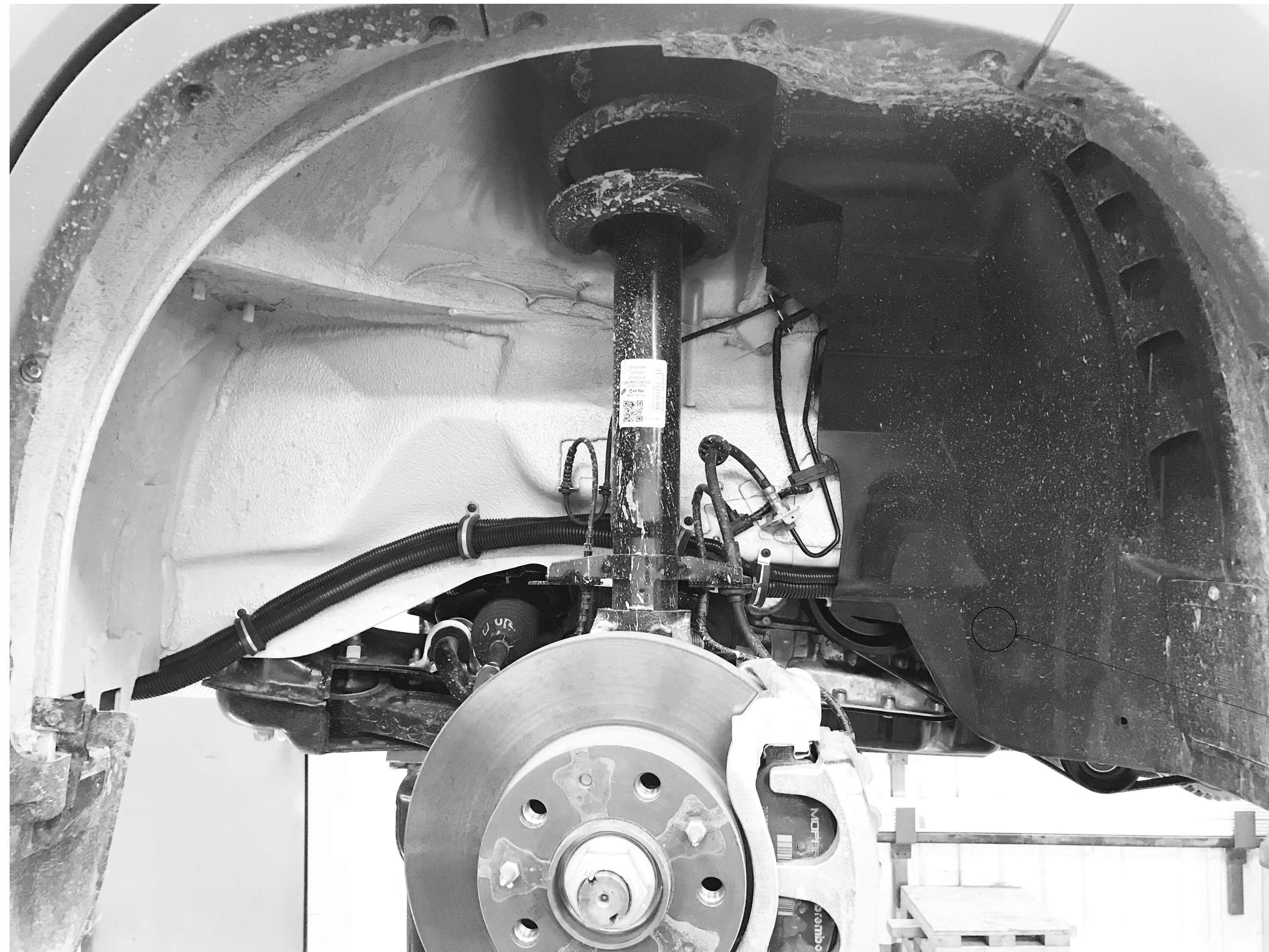
- NOTES:
- 2 PART OF WIRE ASM-LITHIUM SYSTEM. STACK UP AS SHOWN.
 - 1 ATTACH CABLE ASM-ALTERNATOR (RED) TO ALTERNATOR-120 AMP, 58V ENSURING RING TERMINAL IS VERTICAL.

FOR ELECTRICAL TORQUE SPECIFICATIONS SEE DWG NO. 128783-01-000

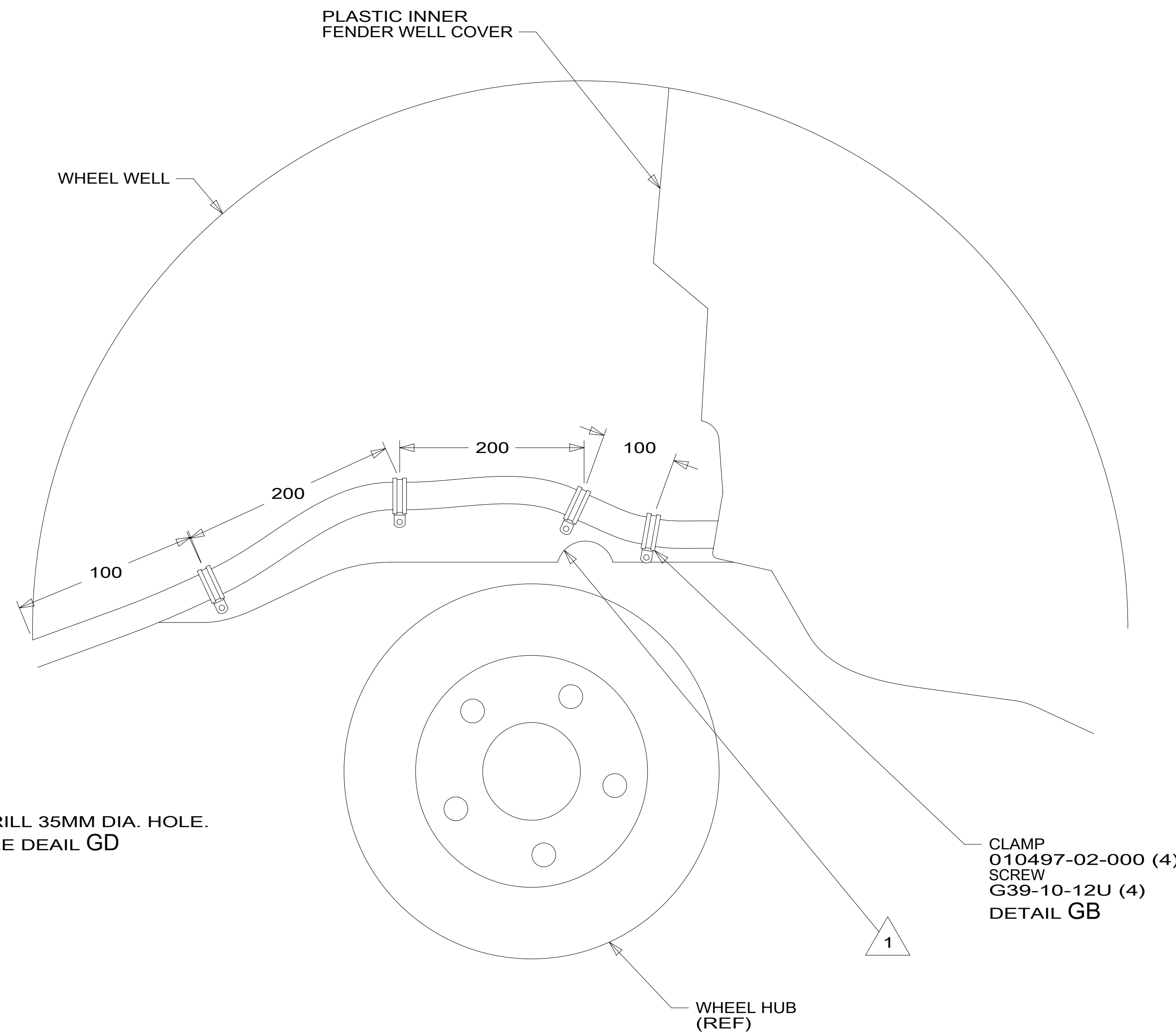
FOR ELECTRICAL CALLOUTS SEE DWG NO. 121339-01-000

265 CODES/STANDARDS-CSA/CMVSS
 1B1 CODES/STANDARDS USA

DESCRIPTION:		1B1 265
BATTERY INSTL		
SHEET:	ITEM/PART NO.:	REV
6 OF 9	000121862 / 32314401000	



VIEW GA



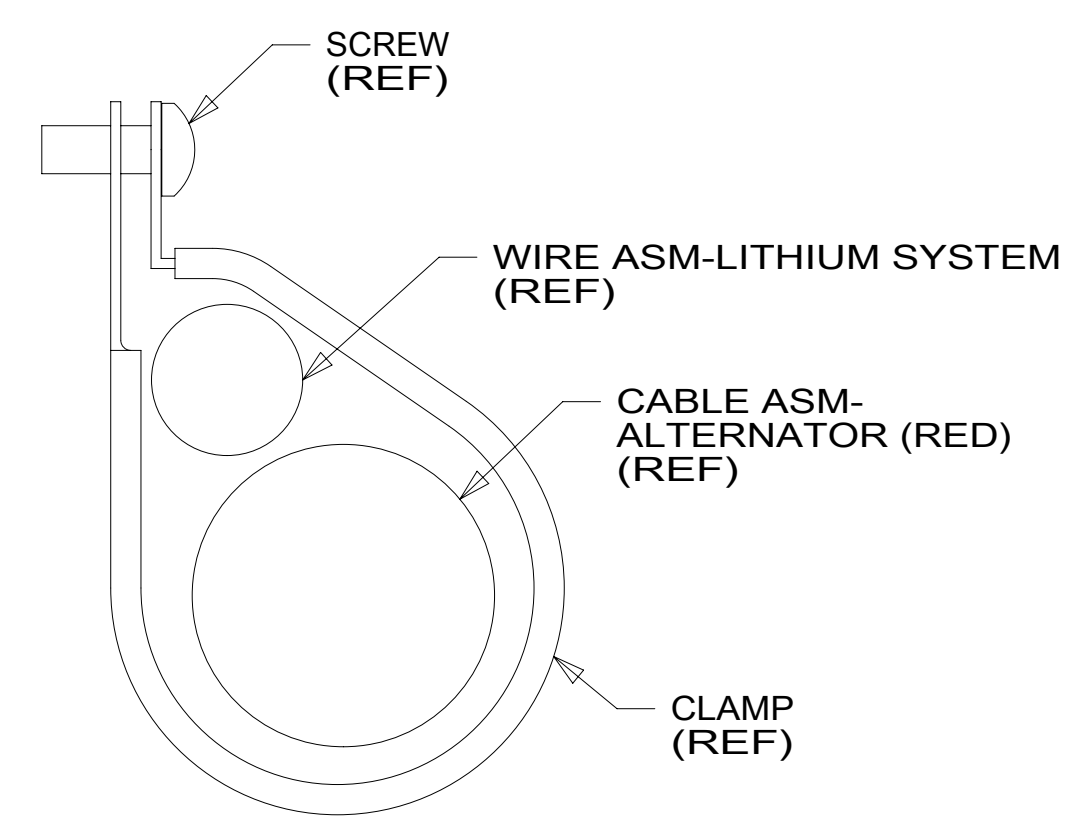
VIEW GA



DETAIL GD



DETAIL GC



DETAIL GB
(4 PLACES)

1 CABLES TO BE MOUNTED ABOVE CV JOINT CLEARANCE NOTCH. SEE DETAIL GC.

NOTES:

FOR ELECTRICAL TORQUE SPECIFICATIONS SEE DWG NO. 128783-01-000

X-X FOR ELECTRICAL CALLOUTS SEE DWG NO. 121339-01-000

265 CODES/STANDARDS-CSA/CMVSS

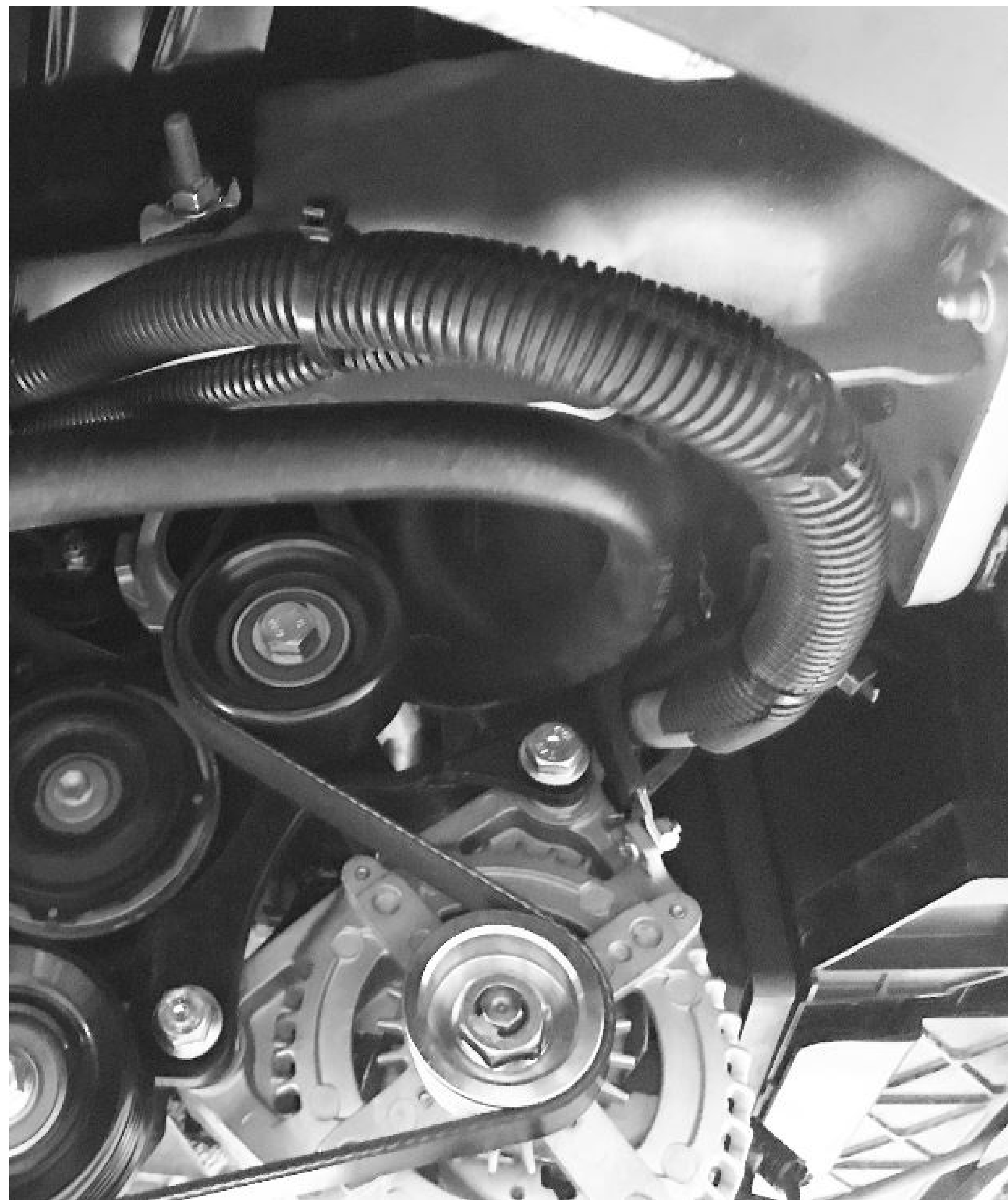
1B1 CODES/STANDARDS USA

1B1 265

DESCRIPTION: BATTERY INSTL

SHEET: 7 OF 9 ITEM/PART NO: 000121862 / 32314401000 REV

1 10-Oct-2018

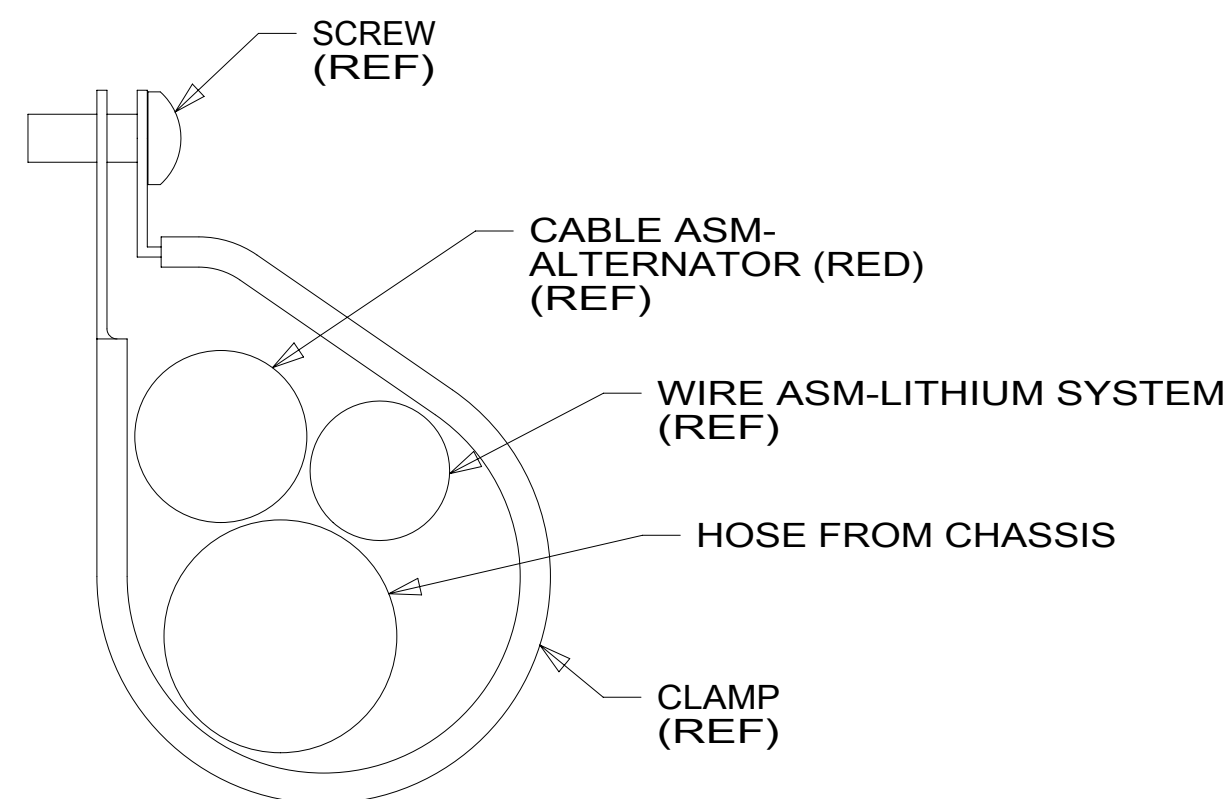


VIEW HA 1



VIEW HB

CLAMP
083610-02-000
SCREW
G39-10-12U
DETAIL HC 2



DETAIL HC 3

- 3 ACTUAL POSITIONING OF CABLES, WIRES, AND LINES DEPENDS ON HOW THEY ARE POSITIONED ON CHASSIS FROM MANUFACTURER. THE POSITION CAN VARY FROM ONE CHASSIS TO ANOTHER.
- 2 CENTER CLAMP BELOW FENDER MOUNT BRACKET.
- 1 ROUTE CABLES ALONG A/C SUCTION LINES.

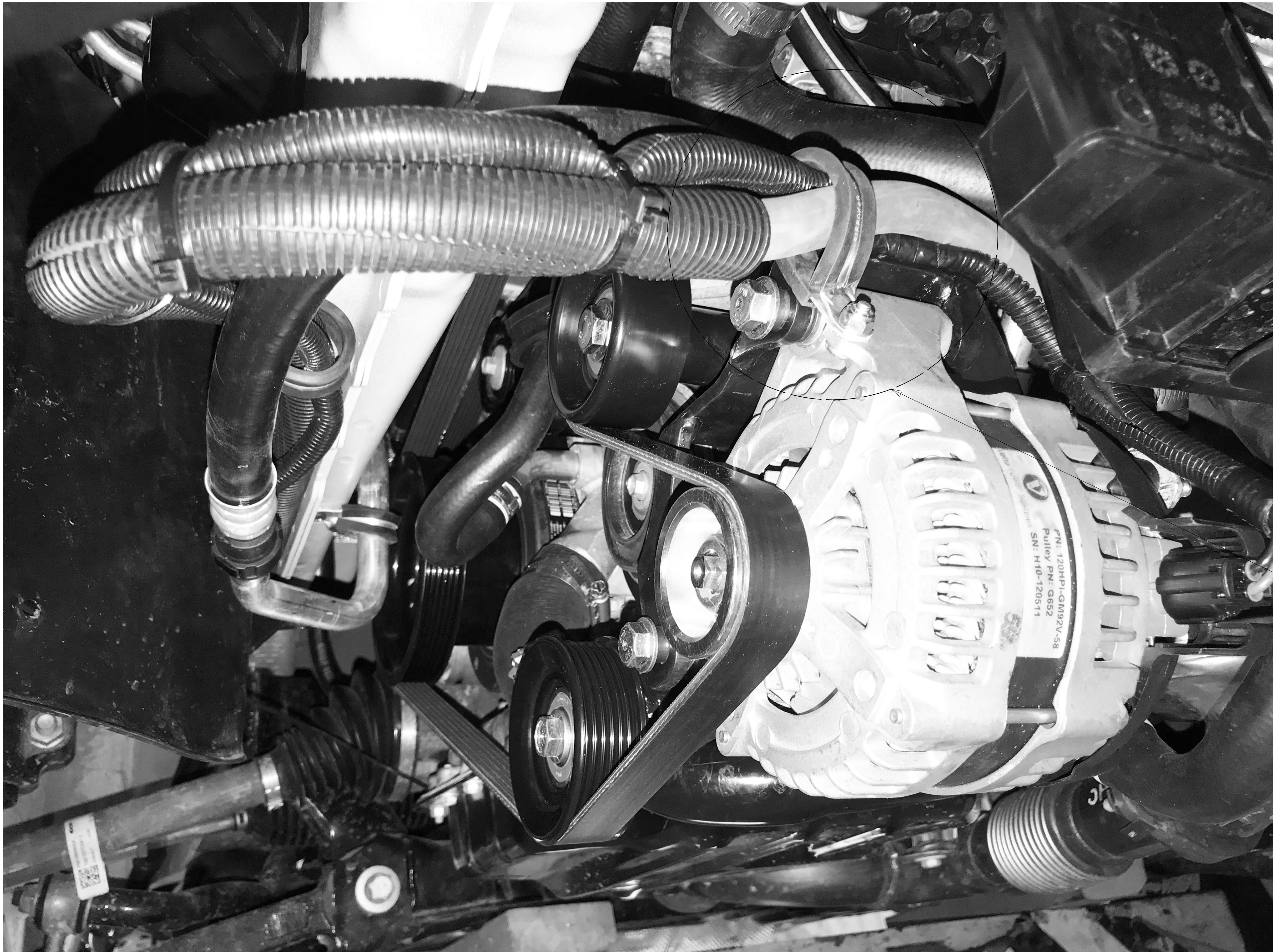
NOTES:

FOR ELECTRICAL TORQUE SPECIFICATIONS SEE DWG NO. 128783-01-000

FOR ELECTRICAL CALLOUTS SEE DWG NO. 121339-01-000

- 265 CODES/STANDARDS-CSA/CMVSS
- 1B1 CODES/STANDARDS USA

1B1 265	
DESCRIPTION: BATTERY INSTL	
SHEET:	ITEM/PART NO:
8 OF 9	000121862 / 32314401000



ADD CONVOLUTED TUBING 041953-11-000 (300MM) TO HEATER HOSE AS SHOWN AND IMMOBILIZE EACH END WITH TIE-WIRE 15IN BLK HEAT STABLE 008343-04-000 (2)

CLAMP 010497-03-000
NUT D28-10-00U
SCREW 000G19-10-12U

ADD CONVOLUTED TUBING 041953-11-000 (300MM) TO A/C SUCTION HOSE AS SHOWN AND IMMOBILIZE EACH END WITH TIE-WIRE 15IN BLK HEAT STABLE 008343-04-000 (2)



IMMOBILIZE LOWER STEEL RADIATOR HOSE TO ALTERNATOR BRACKET WITH TIE-WIRE 15IN BLK HEAT STABLE 008343-04-000 AS SHOWN.



2 ATTACH CLAMP DIRECTLY TO ALTERNATOR-120 AMP, 58V.
1. ADD TIE-WIRE 008343-04-000 (2) EVENLY SPACED AS SHOWN.

NOTES:

FOR ELECTRICAL TORQUE SPECIFICATIONS SEE DWG NO. 128783-01-000

FOR ELECTRICAL CALLOUTS SEE DWG NO. 121339-01-000

265 CODES/STANDARDS-CSA/CMVSS
1B1 CODES/STANDARDS USA

1B1 265

DESCRIPTION: BATTERY INSTL

SHEET: 9 OF 9 ITEM/PART NO: 000121862 / 32314401000

REV