

- 4 REMOVE PAINT AND UNDER COATING FROM GROUND BOLT AND NUT TO INSURE PROPER CONTACT.
- 3 SEE SHEET 4 FOR ADDITIONAL INFORMATION.
- 2. SECURE CONDUIT 41953, TAB AS REQUIRED, OVER ALL WIRES IN CONTACT WITH SHARP EDGES.
- 1. AT MINIMUM ALL WIRES TO BE SUPPORTED AND SECURED PER CODE REQUIREMENTS. USE CLAMP 10495 OR 10497 OR WIRE TIE 8343 OR 108046 AND SCREW G67-XX-XXX OR G56-XX-XXX AS APPROPRIATE FOR INSTALLATION.

NOTES:

- 28D WINDOW BLINDS_(3) CAB
- 1E2 ENTRANCE STEP-ELEC.
- 57P RADIO SPEAKERS-PREMIUM SOUND
- 07B RUNNING BOARDS - ALUMINUM
- 3AA SOLAR PANEL/BATT CHARGER SYS
- 265 CODES/STANDARDS-CSA/CMVSS
- 1B1 CODES/STANDARDS USA

WINNEBAGO
COPYRIGHT 2016 WINNEBAGO INDUSTRIES, INC.

DSNR:	ALL DIMENSIONS ARE IN MILLIMETERS
DIFTR:	
UNSPECIFIED TOLERANCES:	MATERIAL:
WHOLE DIM (X) : 3	
ONE-PLACE (X.X) : 1.5	
TWO-PLACE (X.XX) : 0.50	
ANGLE : 1°	
REFER TO ES0018 FOR FASTENER TIGHTENING GUIDELINES	WEIGHT: (LBS) FIRST USED: 19 259K
DESCRIPTION: WIRING INSTL-CHASSIS	
SHEET: 1 OF 4	ITEM/PART NO.: 000084496 / 32241401000
REF:	

FOR ELECTRICAL TORQUE SPECIFICATIONS SEE DWG NO. 128783-01-000

FOR ELECTRICAL CALLOUTS SEE DWG NO. 121339-01-000

8 7 6 5 4 3 2 1

D

C

B

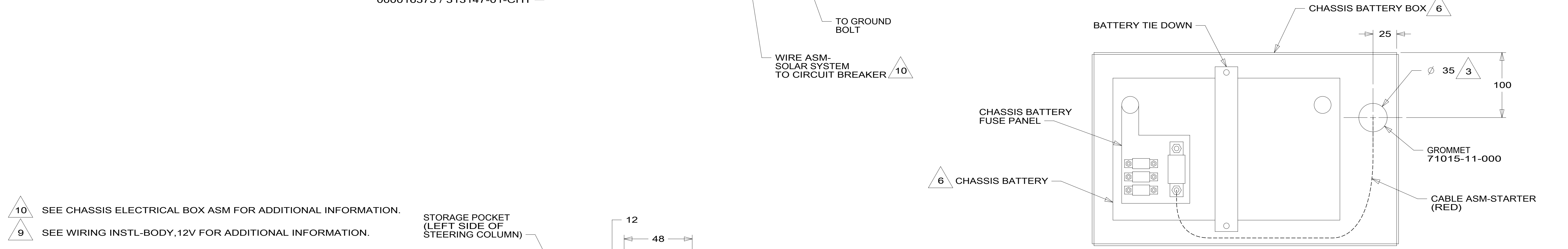
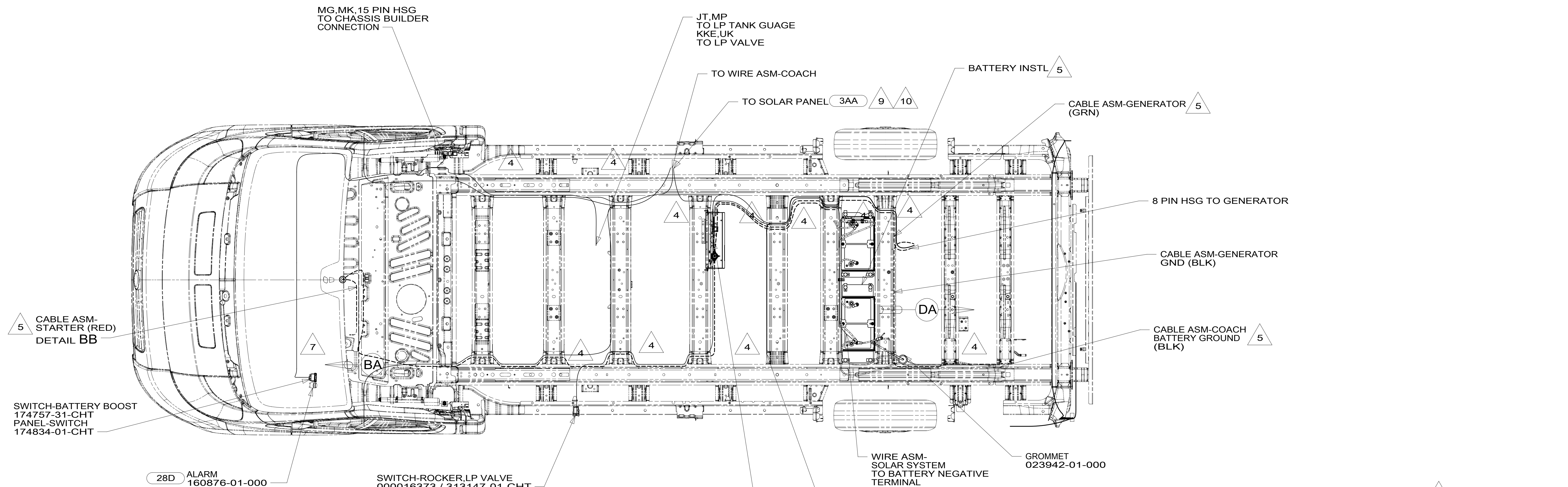
A

D

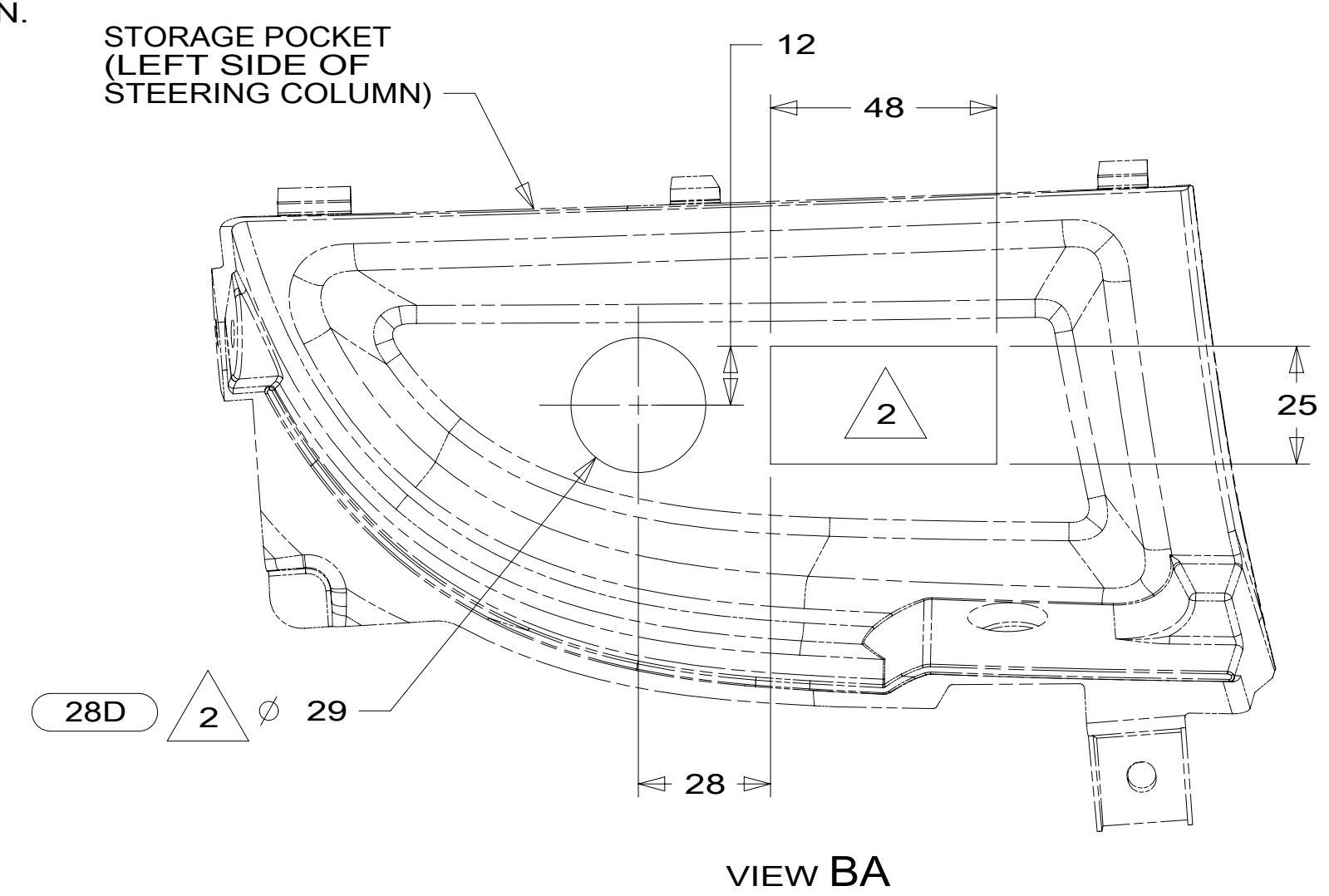
C

B

A



- 10 SEE CHASSIS ELECTRICAL BOX ASM FOR ADDITIONAL INFORMATION.
- 9 SEE WIRING INSTL-BODY, 12V FOR ADDITIONAL INFORMATION.
- 8. AT MINIMUM ALL WIRES TO BE SUPPORTED AND SECURED PER CODE REQUIREMENTS. USE CLAMP 10495 OR 10497 OR WIRE TIE 8343 OR 108046 AND SCREW G67-XX-XXX OR G56-XX-XXX AS APPROPRIATE FOR INSTALLATION.
- 7 SECURE WIRE HARNESS WITH CABLE TIE 008343-02-000.
- 6 LOCATED IN CAB FLOOR.
- 5 SEE SHEET 4 FOR ADDITIONAL INFORMATION.
- 4 CLAMP 83610-02-000, SCREW G39-08-12U.
- 3 DRILL HOLE IN BOTTOM OF PLASTIC BATTERY BOX.
- 2 CUTOUT BACKSIDE OF POCKET TO DIMENSION SHOWN.
- 1. SECURE CONDUIT 41953, TAB AS REQUIRED, OVER ALL WIRES IN CONTACT WITH SHARP EDGES.

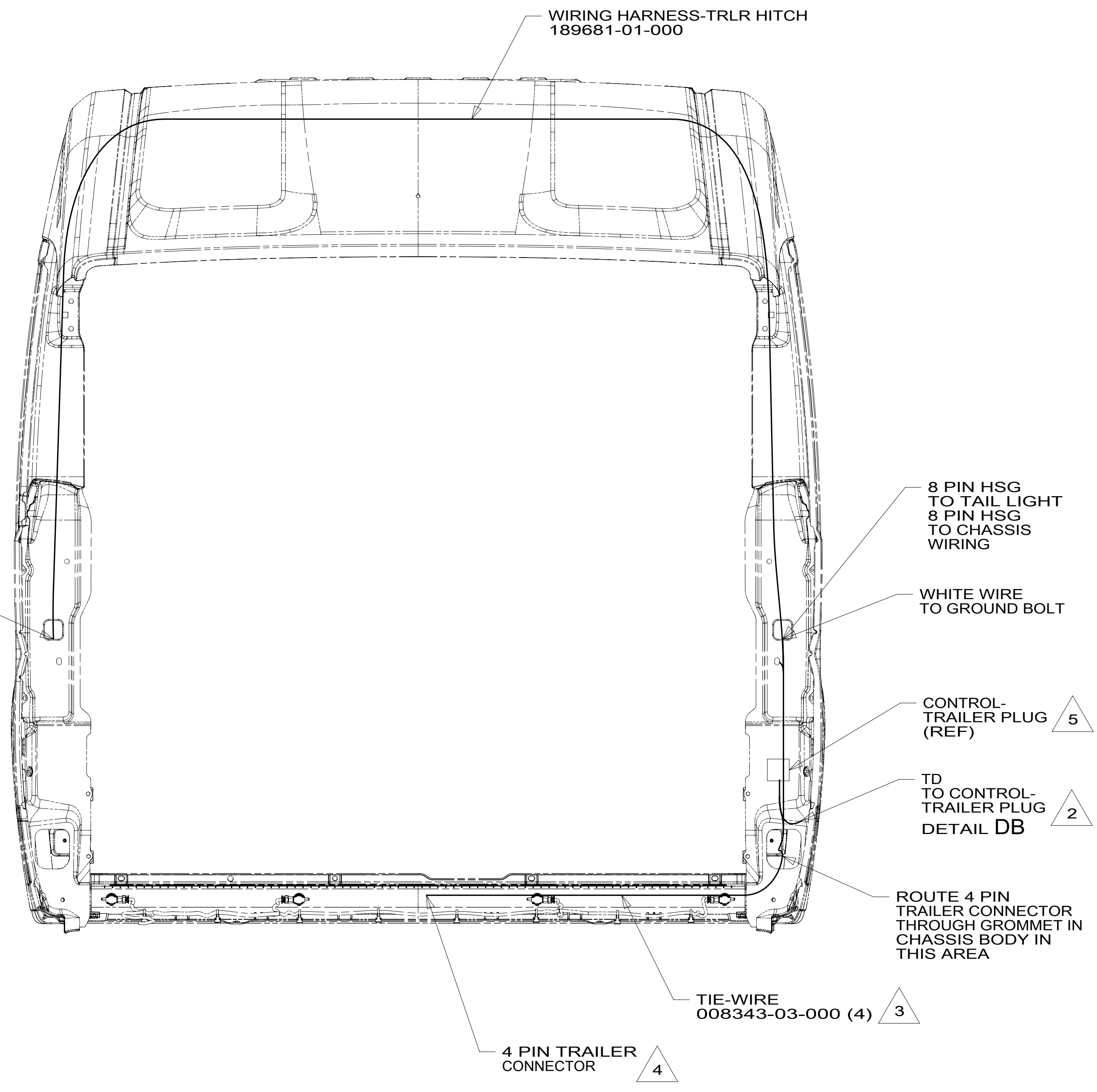
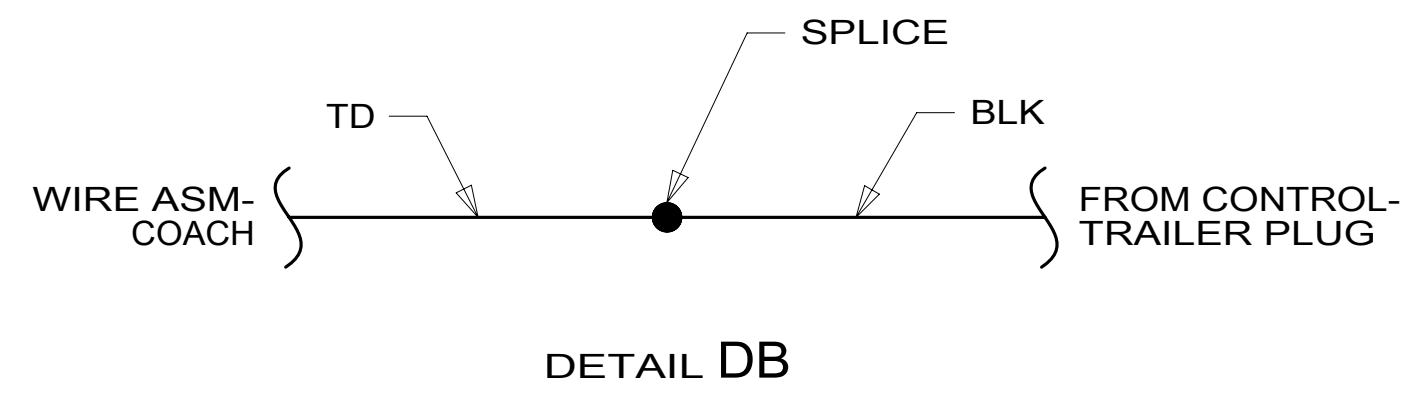


FOR ELECTRICAL TORQUE SPECIFICATIONS SEE DWG NO. 128783-01-000

FOR ELECTRICAL CALLOUTS SEE DWG NO. 121339-01-000

- 28D WINDOW BLINDS_(3) CAB
- 3AA SOLAR PANEL/BATT CHARGER SYS
- 265 CODES/STANDARDS-CSA/CMVSS
- 1B1 CODES/STANDARDS USA

DESCRIPTION:		WIRING INSTL-CHASSIS	
SHEET:	ITEM/PART NO.:	REV	
2 OF 4	000084496 / 32241401000		



- 5 CONTROL SUPPLIED WITH WIRING HARNESS-TRLR HITCH. SECURE CONTROL IN PLACE WITH DOUBLE SIDED TAPE SUPPLIED WITH WIRING HARNESS-TRLR HITCH.
- 4 WIRE TIE 4-PIN TRAILER PLUG TO HITCH ASSEMBLY NEAR RECEIVER.
- 3 WIRE TIE TRAILER WIRING BEHIND BUMPER.
- 2 SEE WIRING INSTL-BODY, 12V FOR ADDITIONAL INFORMATION.

NOTES:
1. SECURE CONDUIT 41953, TAB AS REQUIRED, OVER ALL WIRES IN CONTACT WITH SHARP EDGES.

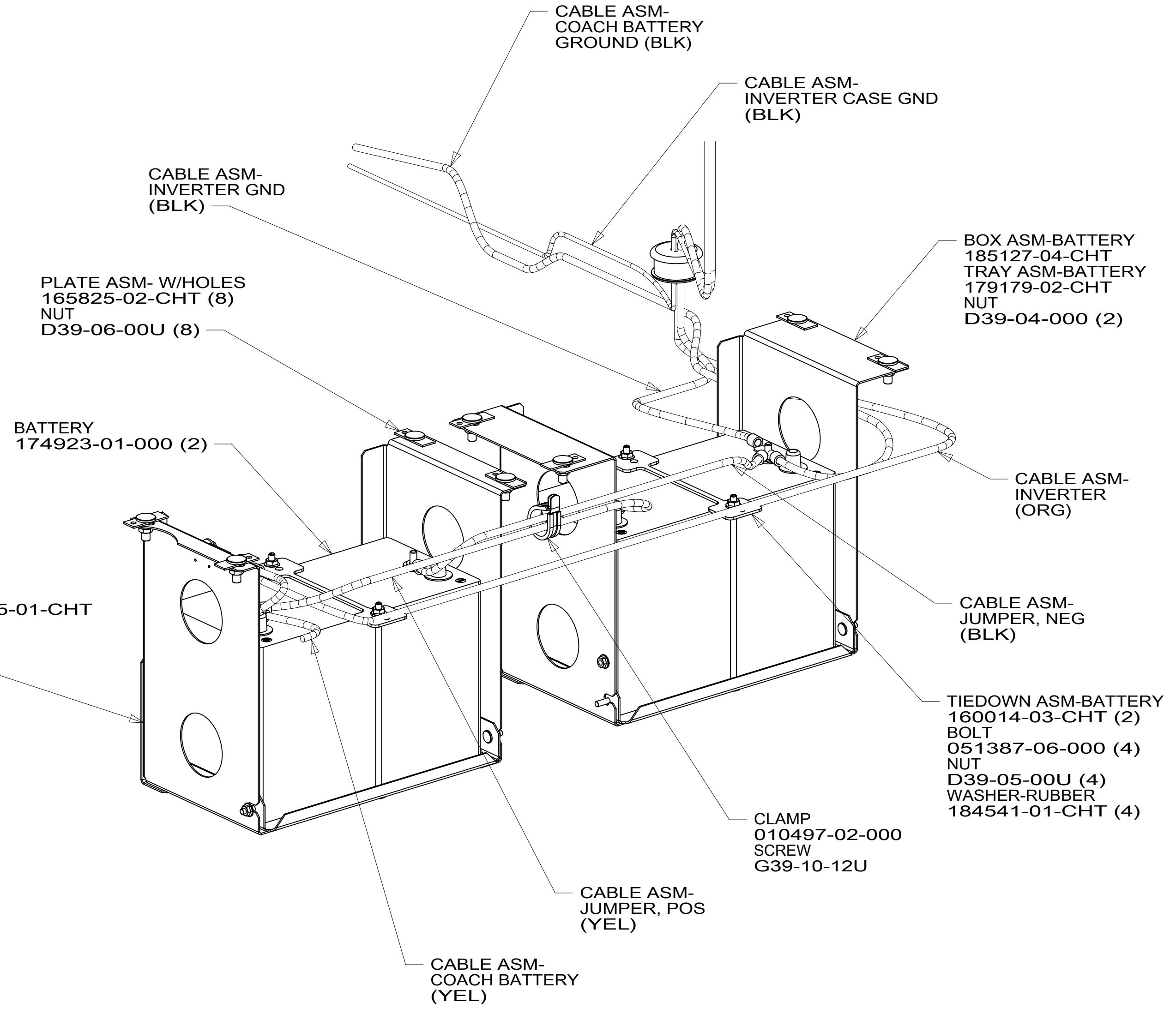
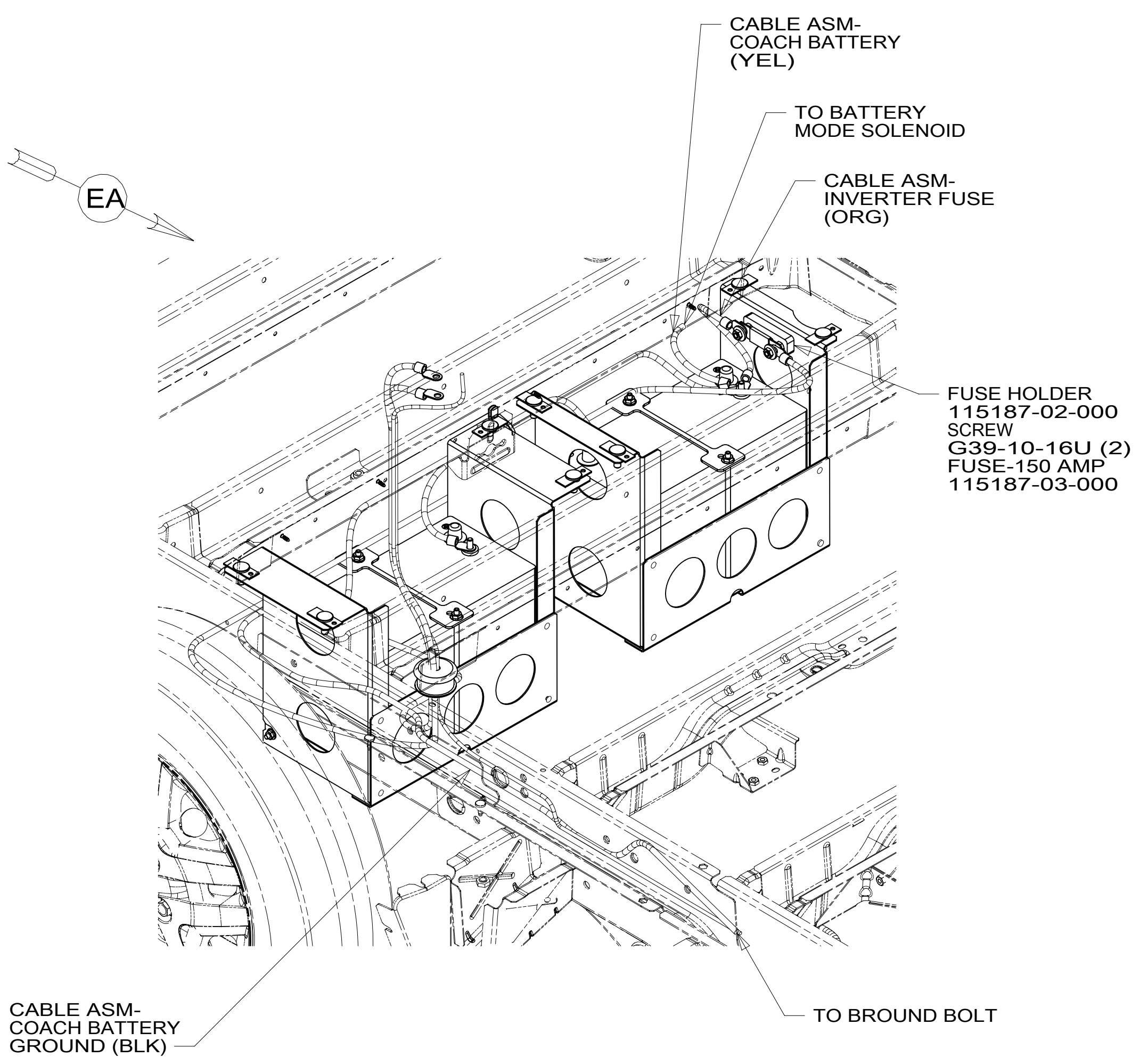
VIEW DA

FOR ELECTRICAL TORQUE SPECIFICATIONS SEE DWG NO. 128783-01-000

FOR ELECTRICAL CALLOUTS SEE DWG NO. 121339-01-000

265 CODES/STANDARDS-CSA/CMVSS
1B1 CODES/STANDARDS USA

DESCRIPTION:		1B1 265
WIRING INSTL-CHASSIS		
SHEET:	ITEM/PART NO.:	REV
3 OF 4	000084496 / 32241401000	



VIEW EA

CABLE ASM-STARTER (RED)	185087-01-039
CABLE ASM-COACH BATTERY (YEL)	141415-52-018
CABLE ASM-COACH BATTERY GND (BLK)	133566-17-009
CABLE ASM-GENERATOR (GRN)	141415-42-020
CABLE ASM-GENERATOR GND (BLK)	133566-17-018
CABLE ASM-JUMPER,POS	141415-52-009
CABLE ASM-JUMPER,NEG	133566-17-009
CABLE ASM-INVERTER FUSE (ORG)	141415-61-006
CABLE ASM-INVERTER (ORG)	141415-62-026
CABLE ASM-INVERTER GND (BLK)	133566-12-015
CABLE ASM-INVERTER CASE GND (BLK)	136145-05-019

1. AT MINIMUM ALL WIRES TO BE SUPPORTED AND SECURED PER CODE REQUIREMENTS. USE CLAMP 10495 OR 10497 OR WIRE TIE 8343 OR 108046 AND SCREW G67-XX-XXX OR G56-XX-XXX AS APPROPRIATE FOR INSTALLATION.

NOTES:

FOR ELECTRICAL TORQUE SPECIFICATIONS SEE DWG NO. 128783-01-000

FOR ELECTRICAL CALLOUTS SEE DWG NO. 121339-01-000

265 CODES/STANDARDS-CSA/CMVSS
1B1 CODES/STANDARDS USA

DESCRIPTION: WIRING INSTL-CHASSIS	
SHEET: 4 OF 4	ITEM/PART NO: 000084496 / 32241401000
REV 1 17-May-2019	