

8

7

6

5

4

3

2

1



D

D

C

C

B

B

A

A

CABLE ASM (YEL) FROM COACH BATTERY FUSE TO COACH SIDE OF AUX START SOLENOID	175207-52-037
CABLE ASM (ORG) FROM COACH BATTERY TO INVERTER FUSE	175207-62-003
CABLE ASM (ORG) FROM INVERTER FUSE TO INVERTER DISCONNECT	175207-62-012
CABLE ASM (ORG) FROM INVERTER DISCONNECT TO INVERTER POSITIVE TERMINAL	175207-62-005
CABLE ASM (BLK) FROM BATTERY TO INVERTER NEGATIVE TERMINAL	175211-01-018
CABLE ASM (BLK) FROM COACH BATTERY TO FRAME RAIL GROUND	175211-02-030
CABLE ASM (BLU) FROM CHASSIS BATTERY DISCONNECT TO LEVELING SYSTEM PUMP	141416-26-110
CABLE ASM (BLK) FROM LEVELING SYSTEM TO FRAME RAIL GROUND	133567-11-009
CABLE ASM (GRN) FROM COACH BAT DISC RELAY FUSE TO PASS THRU STUD IN FRONT LEFT COMPT	175207-42-115
CABLE ASM (GRN) FROM PASS THRU STUD IN FRONT LEFT COMPT TO GENERATOR	175207-42-024
CABLE ASM (BLK) FROM GENERATOR TO FRAME RAIL GROUND BOLT	175211-02-013
CABLE ASM (YEL) JUMPER BETWEEN POSITIVE POSTS ON COACH BATTERY	141417-51-002 (3)
CABLE ASM (BLK) JUMPER BETWEEN NEGATIVE POSTS ON COACH BATTERY	133568-11-002 (3)
CABLE ASM-TEMPERATURE,BATTERY	175385-03-000
CABLE ASM (RED) FROM CHASSIS BATTERY FUSE TO CHASSIS SIDE OF AUX START SOLENOID	175207-35-009
CABLE ASM (RED) FROM CHASSIS BATTERY TO CHASSIS BATTERY FUSE	175207-35-005
CABLE ASM (YEL) FROM COACH BATTERY TO COACH BATTERY FUSE	175207-52-003
CABLE ASM (RED) JUMPER BETWEEN POSITIVE POSTS IN LEFT FRONT COMPT	141417-32-002

265 CODES/STANDARDS-CSA/CMVSS

1B1 CODES/STANDARDS USA

1B1 265



COPYRIGHT 2023 WINNEBAGO INDUSTRIES, INC.

DSNR:		ALL DIMENSIONS ARE IN MILLIMETERS	
DFFR:		MATERIAL:	
UNSPECIFIED TOLERANCES:			
WHOLE DIM (X)	: 3		
ONE-PLACE (X.X)	: 1.5		
TWO-PLACE (X.XX)	: 0.50		
ANGLE	: 1°		
REFER TO ES0018 FOR FASTENER TIGHTENING GUIDELINES		WEIGHT: (LBS)	FIRST USED:
			17 L36G
DESCRIPTION:			
BATTERY INSTL			
SHEET:	ITEM/PART NO.:	REV	
1 OF 5	000022833 / 31457201000		
REF:		1 18-May-2023	

FOR ELECTRICAL TORQUE SPECIFICATIONS SEE DWG NO. 128783-01-000

FOR ELECTRICAL CALLOUTS SEE DWG 000228177 344479-01-000

8

7

6

5

4

3

2

1



8

7

6

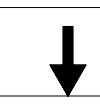
5

4

3

2

1



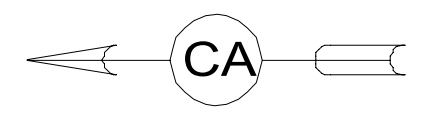
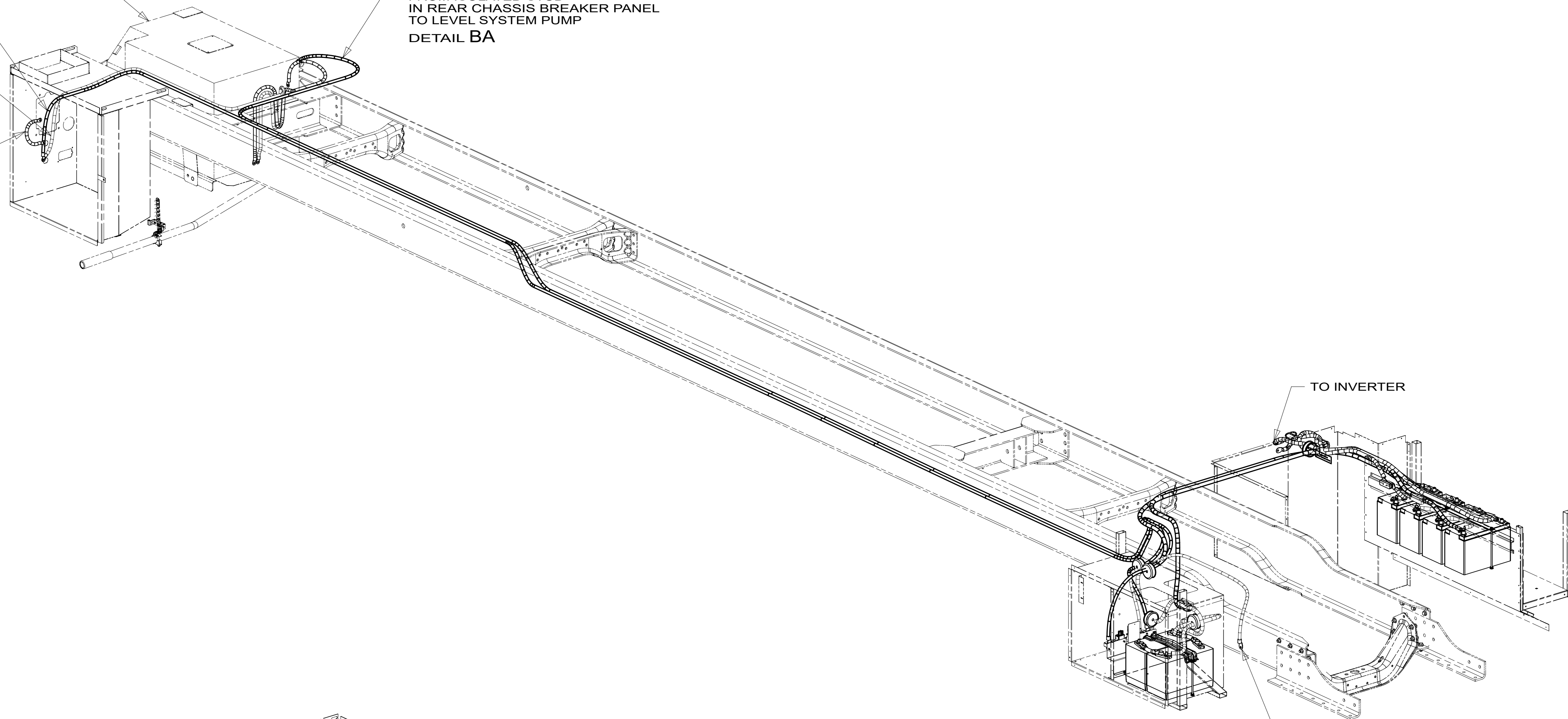
CABLE ASM (GRN)
FROM COACH BAT DISC
RELAY TO PASS THRU STUD

GENERATOR
(REF)

CABLE ASM (BLU)
FROM ISOLATED STUD
IN REAR CHASSIS BREAKER PANEL
TO LEVEL SYSTEM PUMP
DETAIL BA

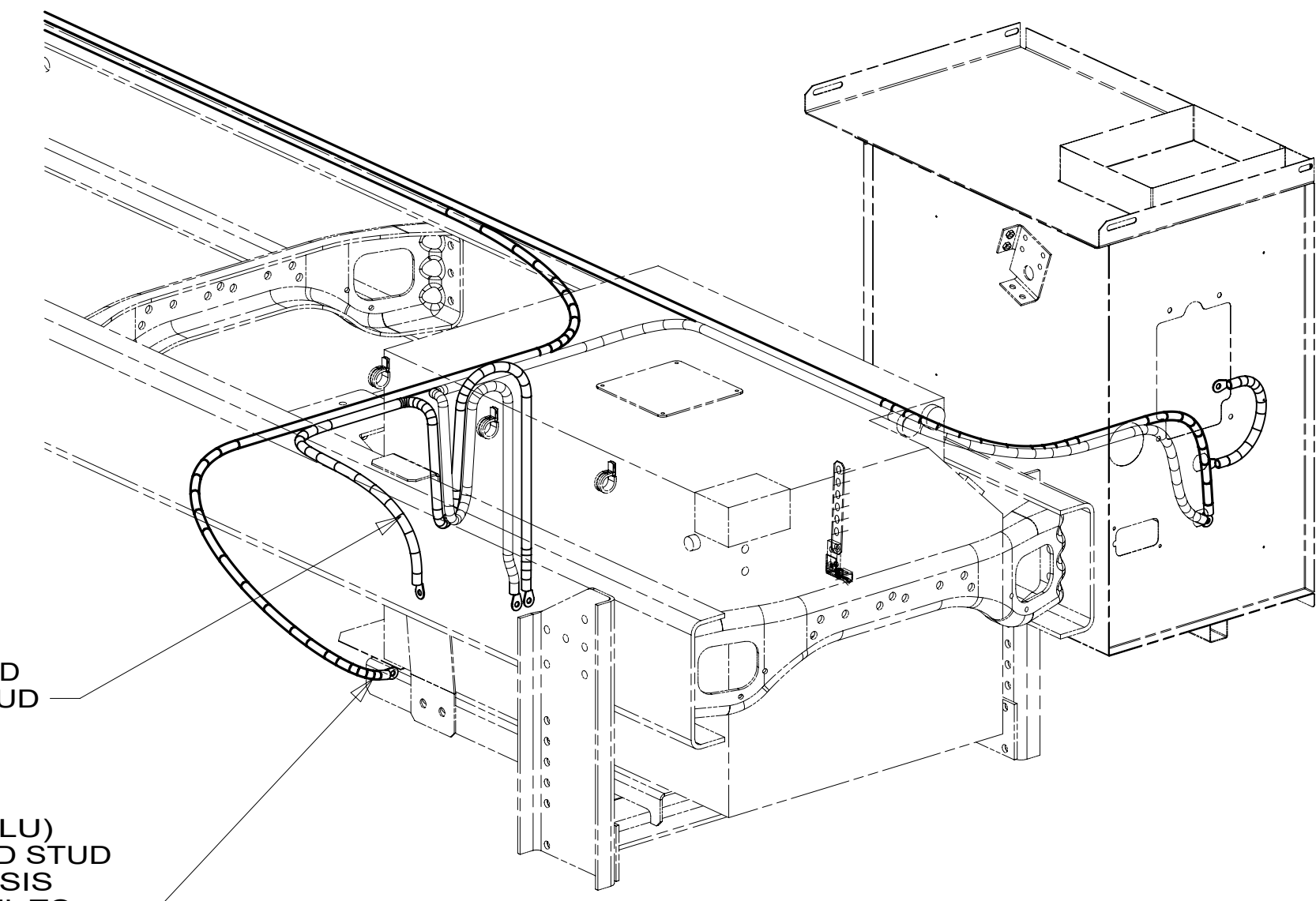
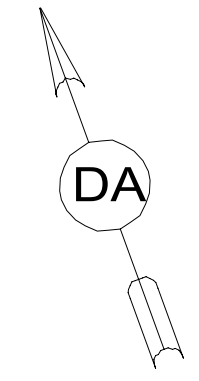
CABLE ASM (GRN)
GENERATOR FROM PASS
THRU STUD TO GENERATOR

CABLE ASM (RED)
JUMPER BETWEEN
POSITIVE POSTS



TO INVERTER

TO CHASSIS
FUSE BLOCK



CABLE ASM (BLK)
GENERATOR GROUND
FROM GENERATOR GROUND STUD
TO LEVEL SYSTEM GROUND STUD

CABLE ASM (BLU)
FROM ISOLATED STUD
IN REAR CHASSIS
BREAKER PANEL TO
LEVEL SYSTEM PUMP

DETAIL BA

- 265 CODES/STANDARDS-CSA/CMVSS
- 1B1 CODES/STANDARDS USA

FOR ELECTRICAL
TORQUE
SPECIFICATIONS
SEE DWG NO.
128783-01-000

FOR
ELECTRICAL
CALLOUTS SEE
DWG 000228177
344479-01-000

1B1 265
DESCRIPTION:
BATTERY INSTL

SHEET:	ITEM/PART NO.:	REV
2 OF 5	000022833 / 31457201000	

8

7

6

5

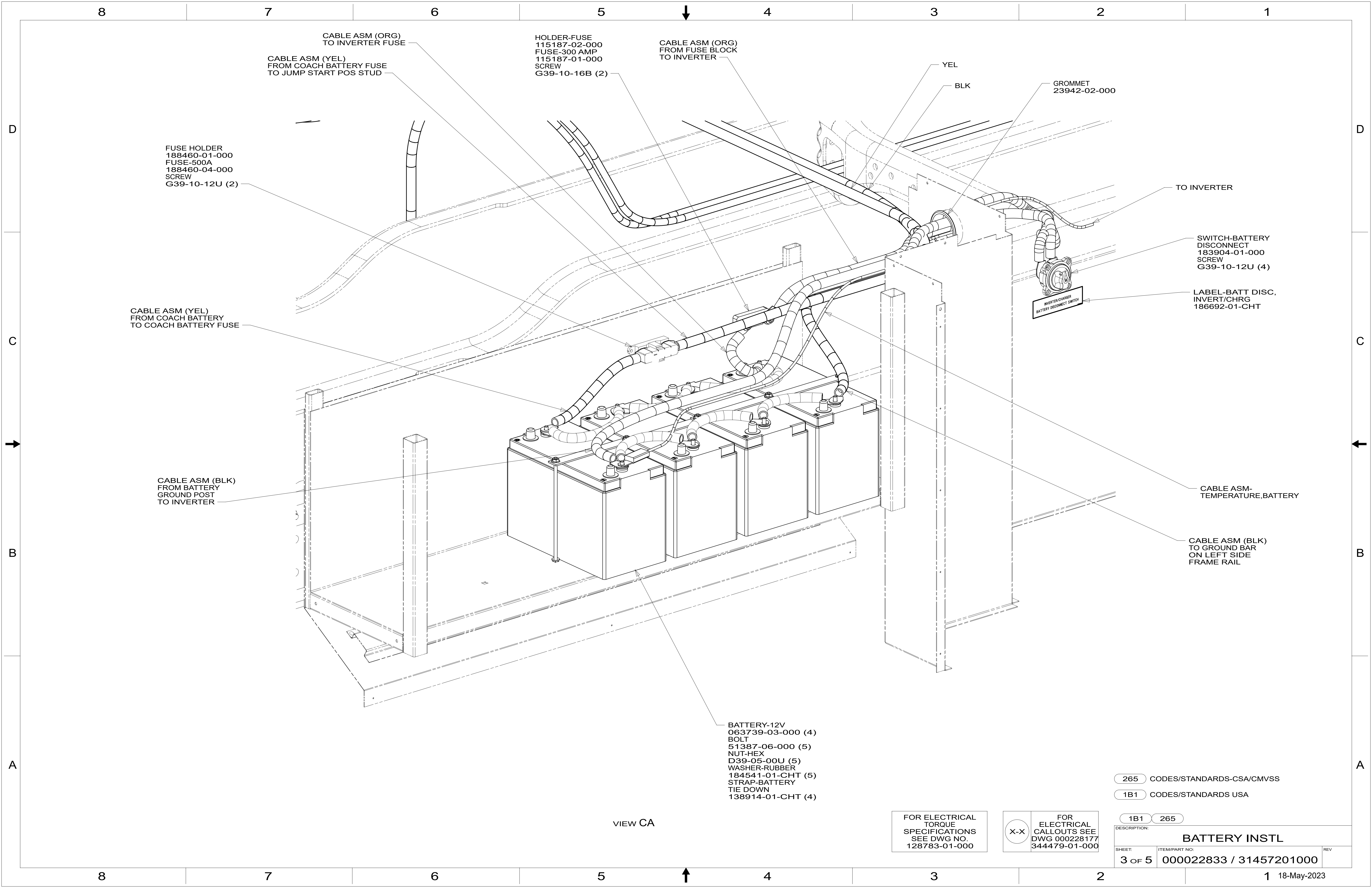
4

3

2

1 18-May-2023





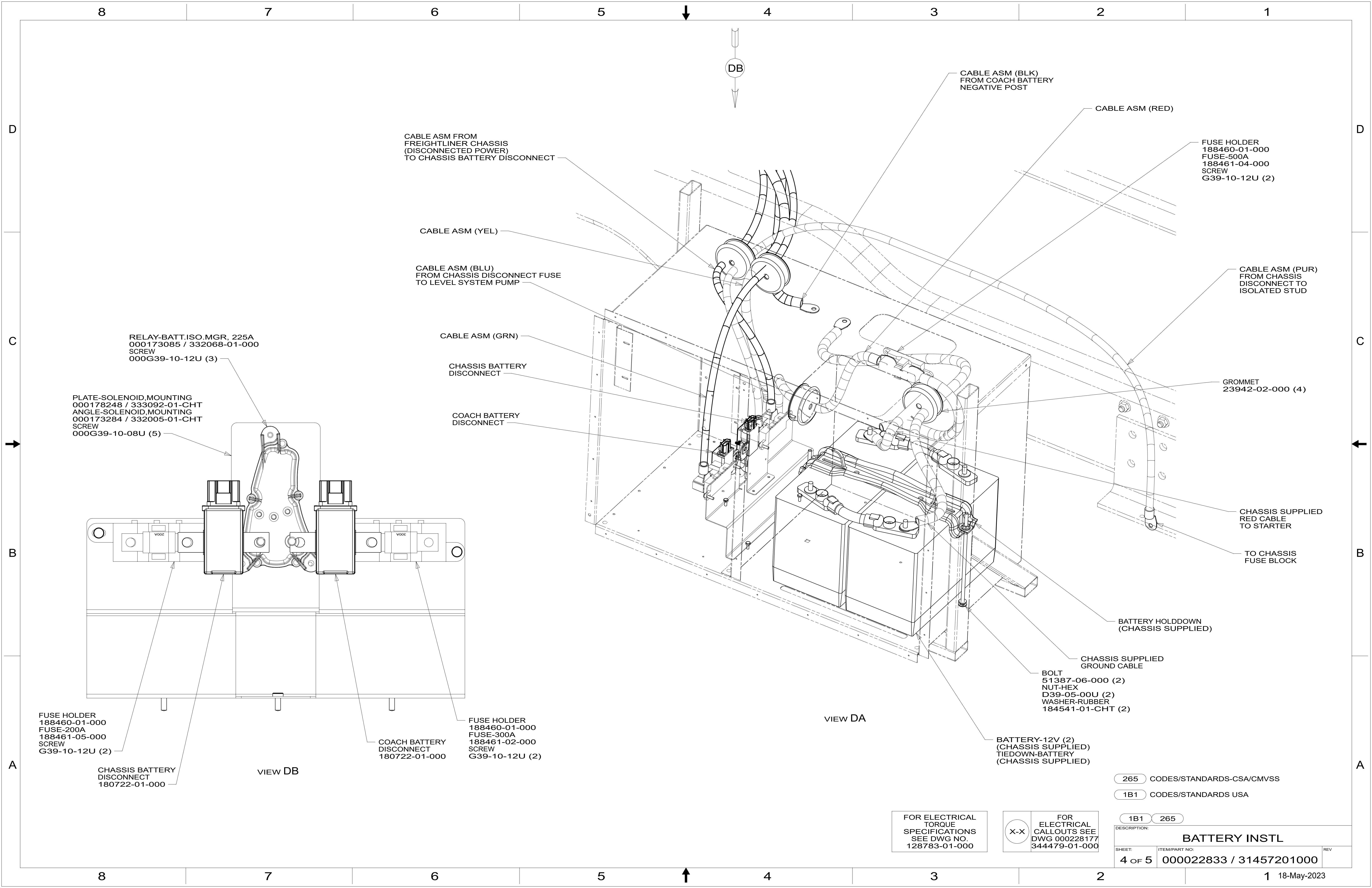
VIEW CA

FOR ELECTRICAL TORQUE SPECIFICATIONS SEE DWG NO. 128783-01-000

FOR ELECTRICAL CALLOUTS SEE DWG 000228177 344479-01-000

- 265 CODES/STANDARDS-CSA/CMVSS
- 1B1 CODES/STANDARDS USA

DESCRIPTION:		1B1	265
BATTERY INSTL			
SHEET:	ITEM/PART NO.:	REV	
3 OF 5	000022833 / 31457201000		



CABLE ASM FROM
FREIGHTLINER CHASSIS
(DISCONNECTED POWER)
TO CHASSIS BATTERY DISCONNECT

CABLE ASM (YEL)

CABLE ASM (BLU)
FROM CHASSIS DISCONNECT FUSE
TO LEVEL SYSTEM PUMP

CABLE ASM (GRN)

CHASSIS BATTERY
DISCONNECT

COACH BATTERY
DISCONNECT

CABLE ASM (BLK)
FROM COACH BATTERY
NEGATIVE POST

CABLE ASM (RED)

FUSE HOLDER
188460-01-000
FUSE-500A
188461-04-000
SCREW
G39-10-12U (2)

CABLE ASM (PUR)
FROM CHASSIS
DISCONNECT TO
ISOLATED STUD

GROMMET
23942-02-000 (4)

CHASSIS SUPPLIED
RED CABLE
TO STARTER

TO CHASSIS
FUSE BLOCK

BATTERY HOLDDOWN
(CHASSIS SUPPLIED)

CHASSIS SUPPLIED
GROUND CABLE

BOLT
51387-06-000 (2)
NUT-HEX
D39-05-00U (2)
WASHER-RUBBER
184541-01-CHT (2)

BATTERY-12V (2)
(CHASSIS SUPPLIED)
TIEDOWN-BATTERY
(CHASSIS SUPPLIED)

RELAY-BATT.ISO.MGR. 225A
000173085 / 332068-01-000
SCREW
000G39-10-12U (3)

PLATE-SOLENOID,MOUNTING
000178248 / 333092-01-CHT
ANGLE-SOLENOID,MOUNTING
000173284 / 332005-01-CHT
SCREW
000G39-10-08U (5)

FUSE HOLDER
188460-01-000
FUSE-200A
188461-05-000
SCREW
G39-10-12U (2)

CHASSIS BATTERY
DISCONNECT
180722-01-000

FUSE HOLDER
188460-01-000
FUSE-300A
188461-02-000
SCREW
G39-10-12U (2)

COACH BATTERY
DISCONNECT
180722-01-000

FOR ELECTRICAL
TORQUE
SPECIFICATIONS
SEE DWG NO.
128783-01-000

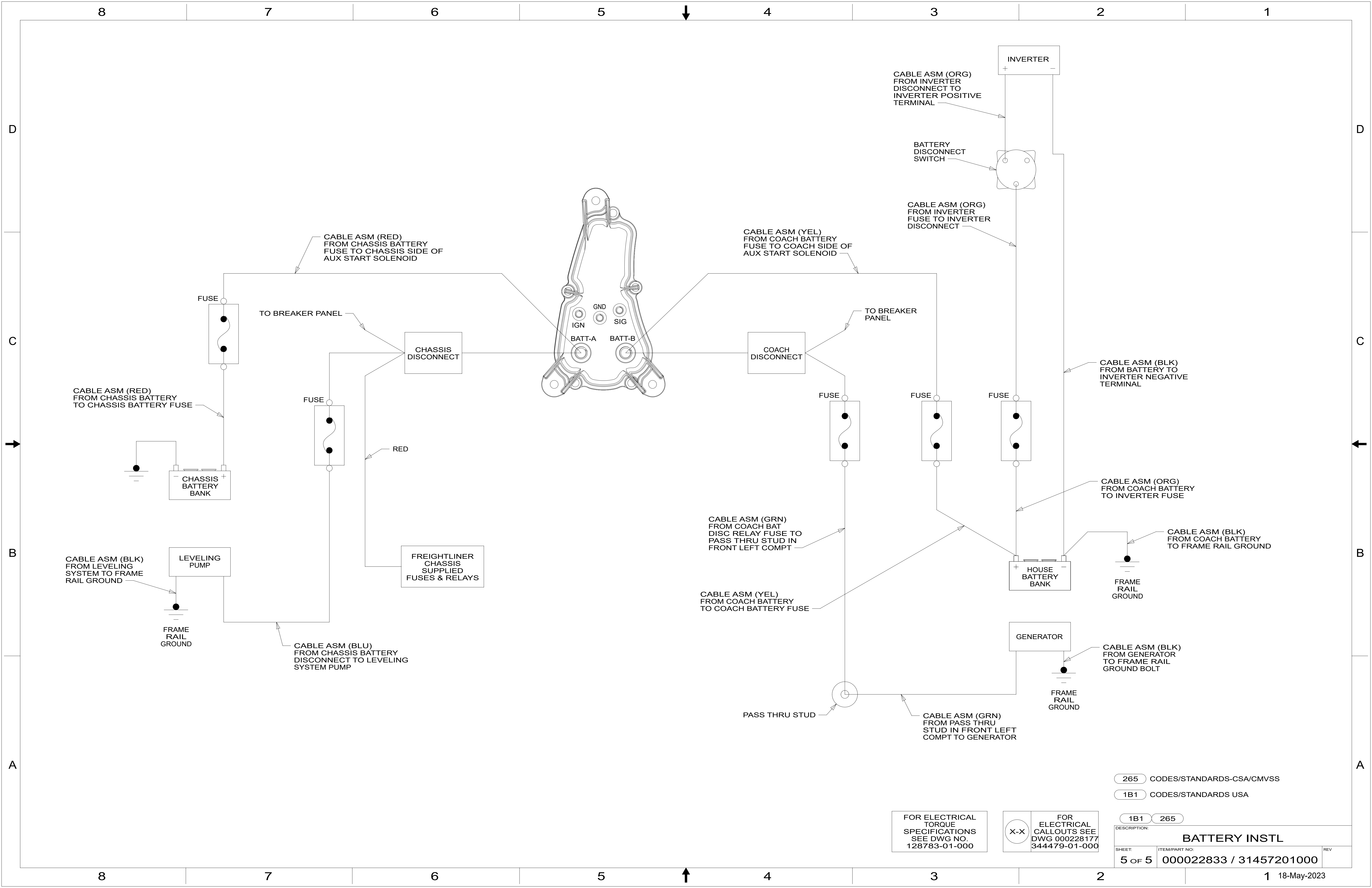
FOR
ELECTRICAL
CALLOUTS SEE
DWG 000228177
344479-01-000

265 CODES/STANDARDS-CSA/CMVSS

1B1 CODES/STANDARDS USA

1B1 265

DESCRIPTION: BATTERY INSTL		
SHEET: 4 OF 5	ITEM/PART NO: 000022833 / 31457201000	REV



FOR ELECTRICAL TORQUE SPECIFICATIONS SEE DWG NO. 128783-01-000

FOR ELECTRICAL CALLOUTS SEE DWG 000228177 344479-01-000

265 CODES/STANDARDS-CSA/CMVSS
 1B1 CODES/STANDARDS USA

DESCRIPTION:	
BATTERY INSTL	
SHEET:	ITEM/PART NO.:
5 OF 5	000022833 / 31457201000
REV	