

8 7 6 5 4 3 2 1

D

D

C

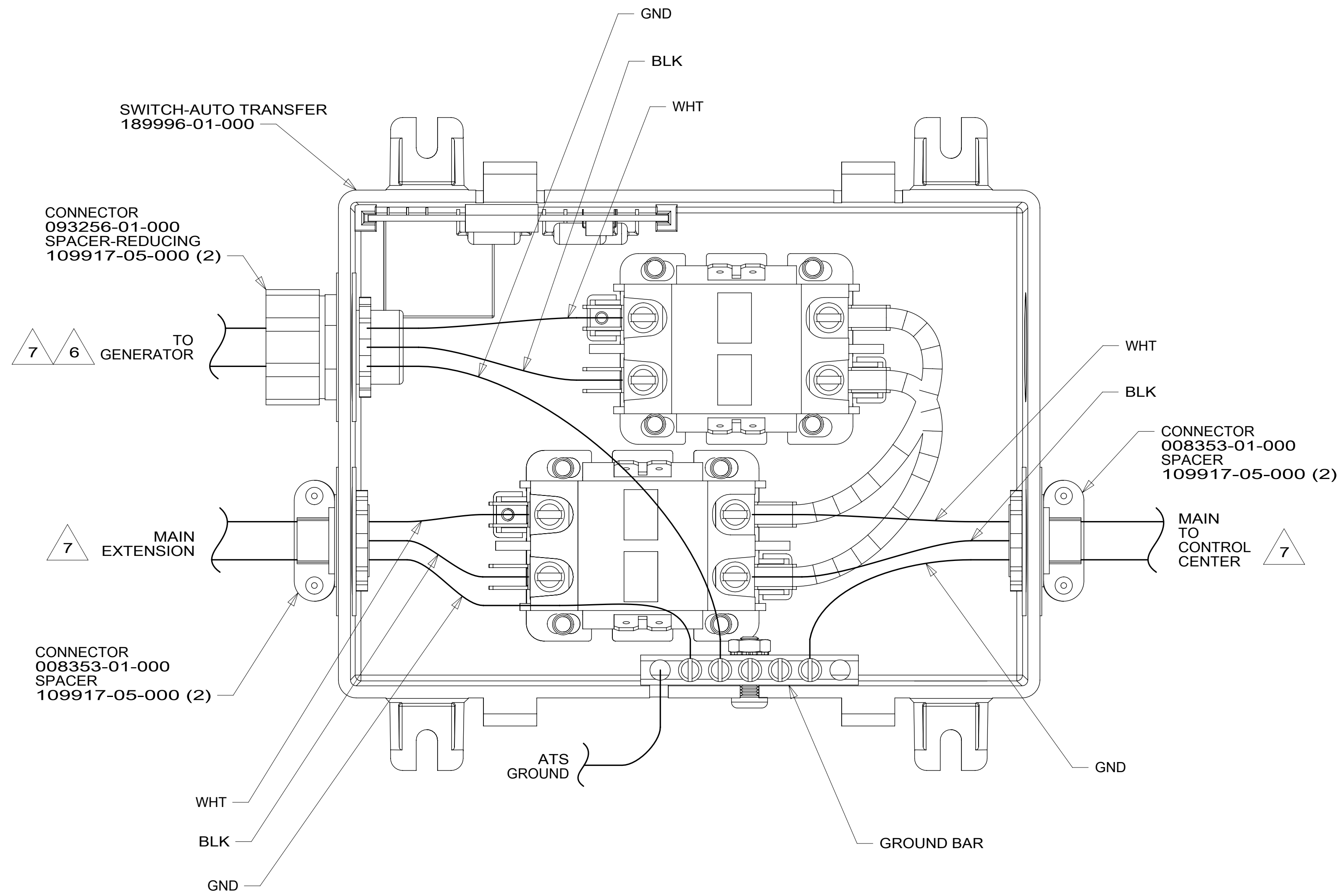
C

B

B

A

A



- 7 SEE WIRING INSTL-BODY, 110V FOR ADDITIONAL INFORMATION.
- 6 SEE GENERATOR INSTL FOR ADDITIONAL INFORMATION.
- 5. ALL 110V STRANDED WIRE WITHOUT TERMINALS TO BE STRIPPED 10 MM AND SOLDER DIPPED.
- 4. REMOVE 400 MM FROM OUTER JACKET ON ALL WIRES ENTERING LOAD CENTER AND TRIM INDIVIDUAL CONDUCTORS AS REQUIRED TO MAKE INTERNAL CONNECTIONS.
- 3. ALL WIRES TO BE CLAMPED WITHIN 200 MM OF ATS.
- 2. GROUND WIRES ARE NOT SHOWN FOR CLARITY.
- 1. ALL GROUNDS TO BE COVERED WITH TUBING 8041-02-000.

NOTES:

- 265 CODES/STANDARDS-CSA/CMVSS
- 1B1 CODES/STANDARDS USA
- 1B1 265



DSNR:		ALL DIMENSIONS ARE IN MILLIMETERS	
DFFR:		MATERIAL:	
UNSPECIFIED TOLERANCES:			
WHOLE DIM (X)	: 3		
ONE-PLACE (X.X)	: 1.5		
TWO-PLACE (X.XX)	: 0.50		
ANGLE	: 1°		

FOR ELECTRICAL TORQUE SPECIFICATIONS SEE DWG NO. 128783-01-000

FOR ELECTRICAL CALLOUTS SEE DWG NO. 121339-01-000

REFER TO ES0018 FOR FASTENER TIGHTENING GUIDELINES

WEIGHT: (LBS) **17 259G**

DESCRIPTION: **ATS ASM**

SHEET: **1 OF 1** ITEM/PART NO.: **000022572 / 31448801000** REF: **1** 10-Apr-2018

8 7 6 5 4 3 2 1