

CIRCUIT BREAKER-20 AMP  
93654-03-000  
SCREW  
G52-06-04U  
G52-06-05U  
SPACER-CIRCUIT BREAKER  
141789-01-000

CIRCUIT BREAKER-6 AMP  
93654-01-000  
SCREW  
G52-06-04U  
G52-06-05U  
SPACER-CIRCUIT BREAKER  
141789-01-000

CIRCUIT BREAKER-55 AMP  
113482-01-000  
SCREW  
G19-10-08U

CIRCUIT BREAKER-30 AMP  
93655-02-000  
SPACER-CIRCUIT BREAKER  
141789-01-000  
SCREW  
G52-06-04U (2)

CIRCUIT BREAKER-30 AMP  
93655-02-000  
SPACER-CIRCUIT BREAKER  
141789-01-000  
SCREW  
G52-06-05U (2)

CIRCUIT BREAKER-6 AMP  
93654-01-000  
SCREW  
G52-06-04U  
G52-06-05U  
SPACER-CIRCUIT BREAKER  
141789-01-000

CIRCUIT BREAKER-15 AMP  
93654-02-000  
SCREW  
G52-06-05U  
SPACER-CIRCUIT BREAKER  
141789-01-000

CIRCUIT BREAKER-30 AMP  
93655-02-000  
SPACER-CIRCUIT BREAKER  
141789-01-000  
SCREW  
G52-06-04U  
G52-06-05U

CIRCUIT BREAKER-55 AMP  
113482-01-000  
SCREW  
G19-10-08U

LABEL-CIRCUIT BREAKER  
93236-53-000

PLATE-CIRCUIT BREAKER  
000019322 / 313830-01-CHT  
SCREW  
G39-08-089 (2)

- 2 USE THE LONGER SCREW TO PROPERLY ATTACH BREAKER TO BUSS BAR.
- 1 REPLACE EXISTING SCREW TO PROPERLY ATTACH BREAKER TO BUSS BAR.

FOR ELECTRICAL TORQUE SPECIFICATIONS SEE DWG NO. 128783-01-000

FOR ELECTRICAL CALLOUTS SEE DWG NO. 121339-01-000

- 265 CODES/STANDARDS-CSA/CMVSS
- 1B1 CODES/STANDARDS USA
- 1B1 265

**WINNEBAGO**  
COPYRIGHT 2016 WINNEBAGO INDUSTRIES, INC.

DSNR:	ALL DIMENSIONS ARE IN MILLIMETERS	
DIFFR:		
UNSPECIFIED TOLERANCES:	MATERIAL:	
WHOLE DIM (X) ± 3		
ONE-PLACE (X.X) ± 1.5		
TWO-PLACE (X.XX) ± 0.50		
ANGLE ± 1°		
REFER TO ES0018 FOR FASTENER TIGHTENING GUIDELINES	WEIGHT: (LBS)	FIRST USED: 17 E32YE
DESCRIPTION: <b>CHASSIS ELECTRICAL BOX ASM</b>		
SHEET: 1 OF 2	ITEM/PART NO: 000021959 / 31438301000	REV:

D

D

C

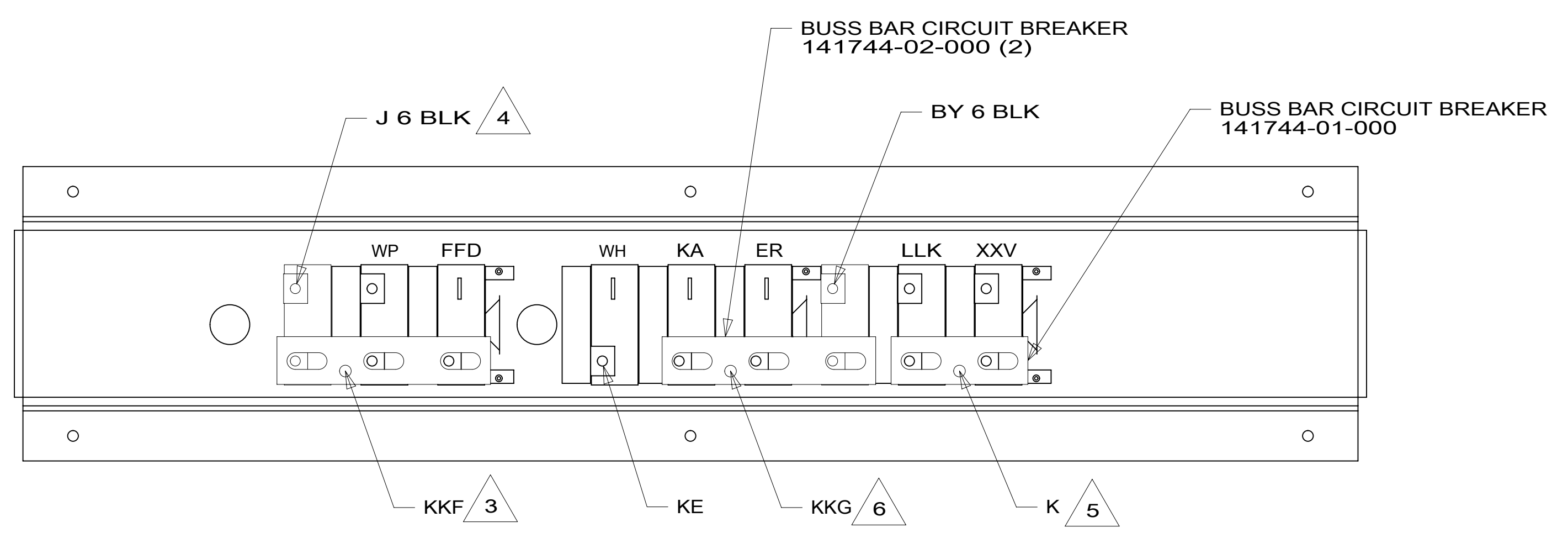
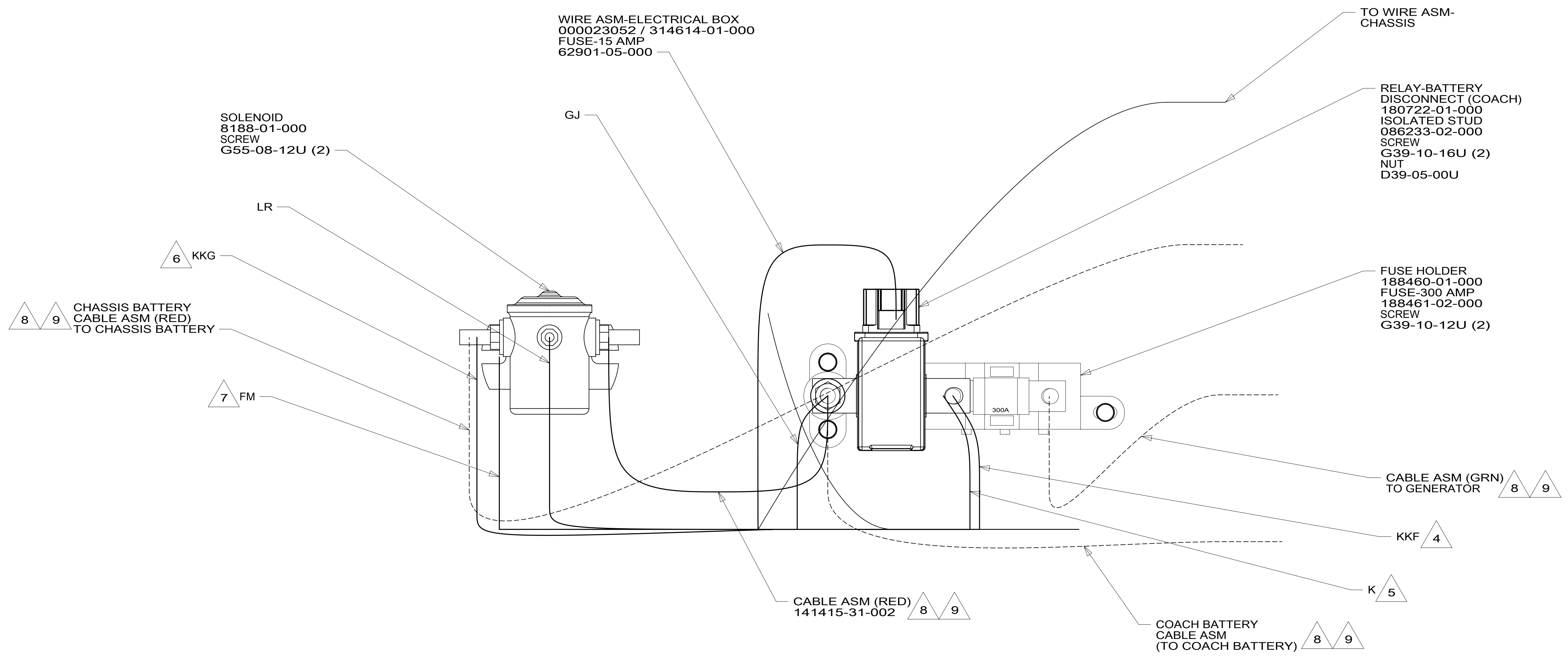
C

B

B

A

A



- 9 SEE BATTERY INSTL FOR ADDITIONAL INFORMATION.
- 8 SEE WIRING INSTL-CHASSIS FOR ADDITIONAL INFORMATION.
- 7 SECURE WITH SOLENOID MOUNTING SCREW.
- 6 WIRE MARKED WITH RED TAPE.
- 5 WIRE MARKED WITH PURPLE TAPE.
- 4 WIRE MARKED WITH YELLOW TAPE.
- 3 WIRE MARKED WITH 2 WRAPS OF YELLOW TAPE.

2. SECURE CONDUIT 41953, TAB AS REQUIRED, OVER ALL WIRES IN CONTACT WITH SHARP EDGES.

1. LEGEND: — WINNEBAGO: - - - - - CABLE: - - - - - CHASSIS SUPPLIED WIRING.

NOTES:

FOR ELECTRICAL TORQUE SPECIFICATIONS SEE DWG NO. 128783-01-000

FOR ELECTRICAL CALLOUTS SEE DWG NO. 121339-01-000

265 CODES/STANDARDS-CSA/CMVSS  
1B1 CODES/STANDARDS USA

DESCRIPTION:	
<b>CHASSIS ELECTRICAL BOX ASM</b>	
SHEET:	ITEM/PART NO.:
2 OF 2	000021959 / 31438301000
REV	